


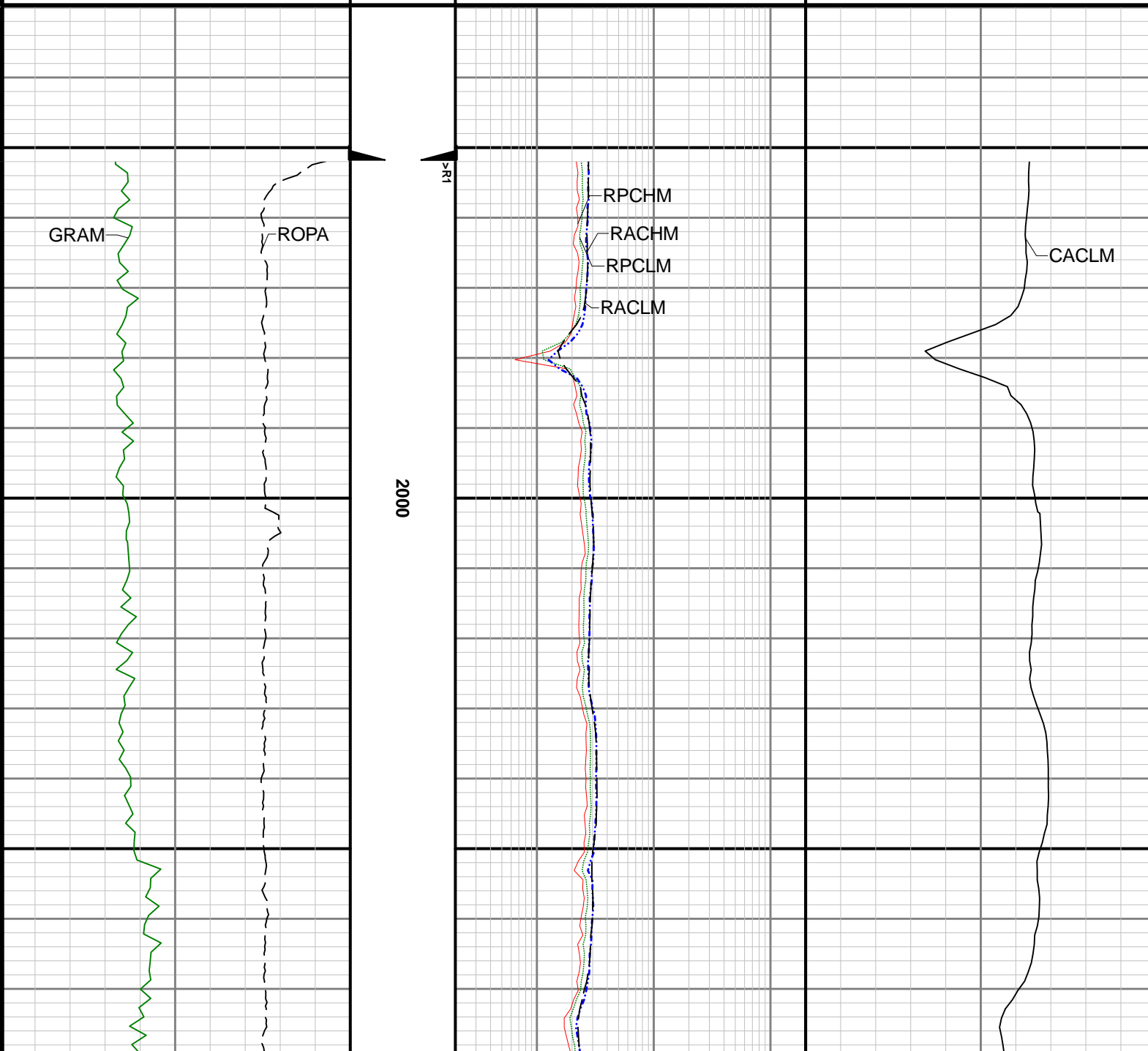
- engineers, depth calibrations and measurements could not be independently verified.
- 2 Baker Hughes LWD Run 1 utilized 6 ¾ inch OnTrak service (Multiple Propagation and Gamma Ray) behind an 8 1/2 inch bit and rotary steerable assembly to perform a MAD (measurement after drilling) Pass from 1952 to 5402 feet MD (1952 to 5234 feet TVD). The Data collected during this run was ream logged up to 51 hours after being drilled and presented independent of the drilled log.
- 3 The Gamma Ray Apparent (GRAM) data is presented 0 to 300 API, per the customer's request.

Remarks				
Number	Measured Depth (ft)	Hole Section (in)	Run No.	Remark
1	5402.00	8.500	1	The interval from 5402 to 16775 feet MD (5234 to 5991 feet TVD) was not logged due to sensor offset from bit.

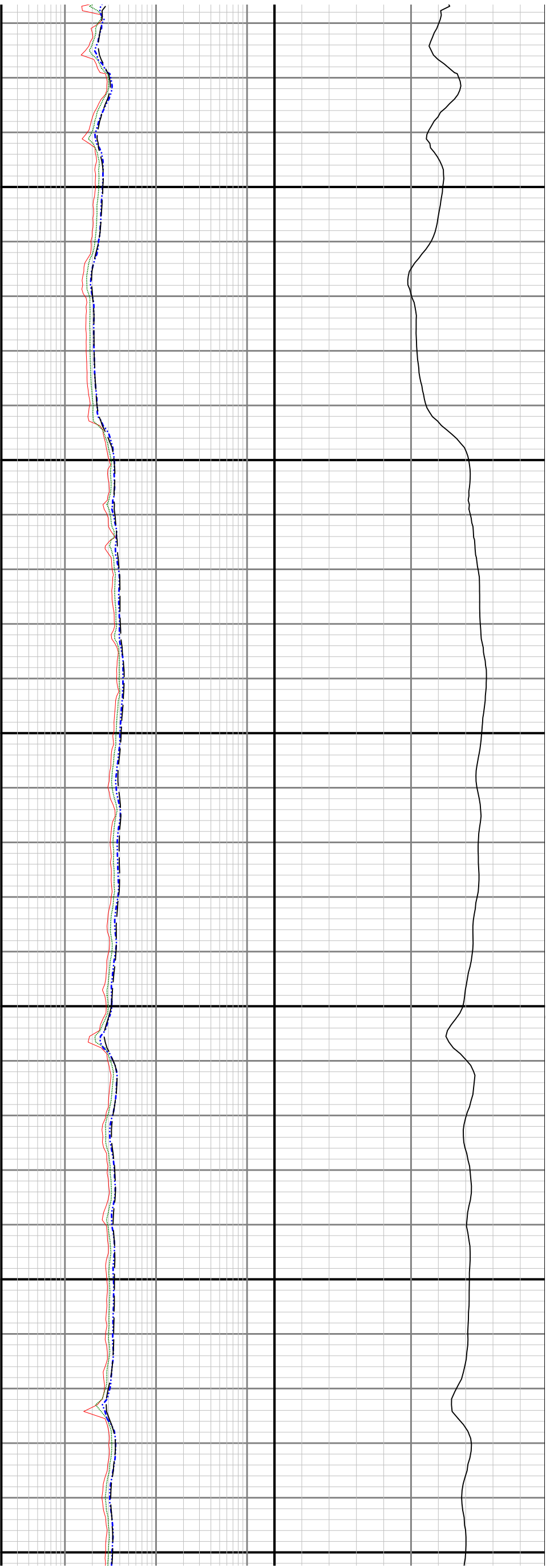
Curve Mnemonics		
Presented Curves	Description	Units
CACLM	Conductivity Attenuation - Corrected - 400kHz	mmho/m
RACHM	Resistivity Attenuation - Corrected - 2MHz	ohm.m
RACLM	Resistivity Attenuation - Corrected - 400kHz	ohm.m
RPCHM	Resistivity Phase - Corrected - 2MHz	ohm.m
RPCLM	Resistivity Phase - Corrected - 400kHz	ohm.m
ROPA	Depth Averaged ROP 3 ft Average	ft/h
GRAM	Gamma Ray - Apparent - Memory 0.5 ft Average	API
TCDM	Directional Real-Time Survey Temperature	degF

<div><div><div>BAKER HUGHES</div><div>a GE company</div></div><div></div></div>	Company	Noble Energy			
	Well	Dorothy State LG16-785			
	Interval	Date From:	2018-10-25 01:40	Top:	1952.00 ft
	Created	Date To:	2018-10-28 04:23	Bottom:	16775.00 ft
		Created	2018-10-28 06:53:56		

Gamma Ray - Apparent 0.5 ft Average [GRAM]	TVD 1:240 feet	Resistivity Phase - Corrected - 2MHz [RPCHM]	Conductivity Attenuation - Corrected - 400kHz [CACLM]
0 300		0.2 200	1000 0
API		ohm.m	mmho/m
Rate of Penetration 3 ft Average [ROPA]		Resistivity Phase - Corrected - 400kHz [RPCLM]	Downhole Temperature [TCDM]
1000 0		0.2 200	100 300
ft/h		ohm.m	degF
		Resistivity Attenuation - Corrected - 2MHz [RACHM]	
		0.2 200	
		ohm.m	
		Resistivity Attenuation - Corrected - 400kHz [RACLM]	
		0.2 200	
		ohm.m	



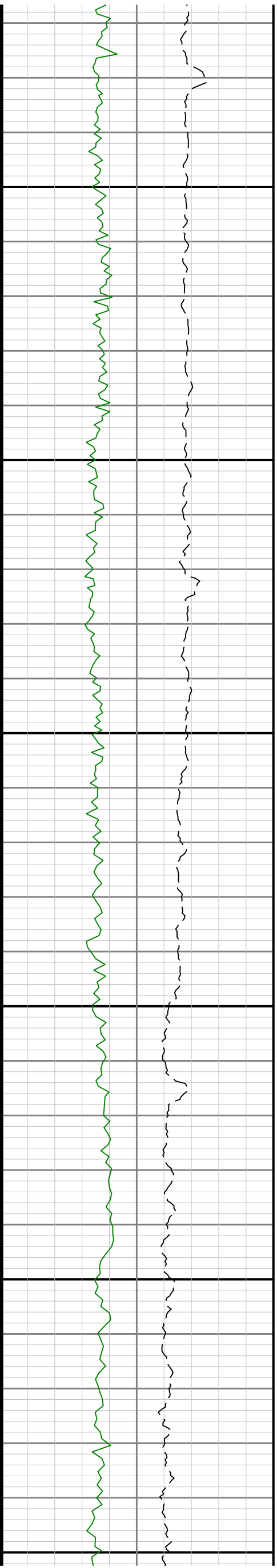


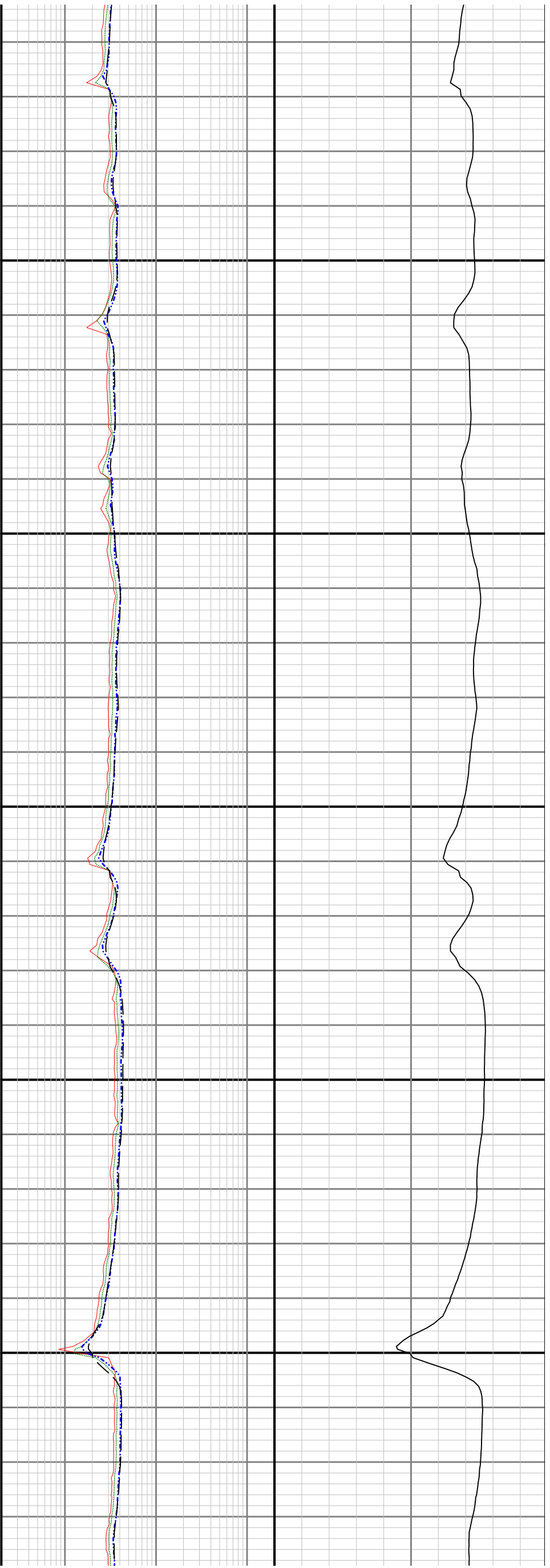


2400

2500

2600

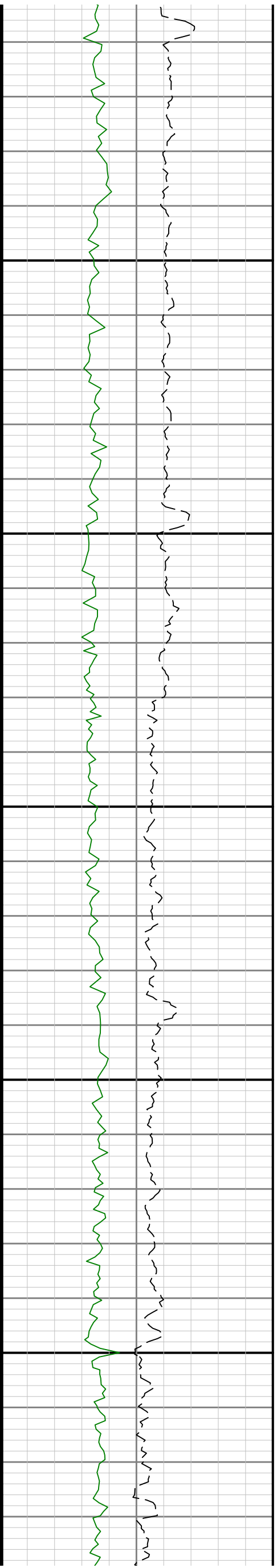


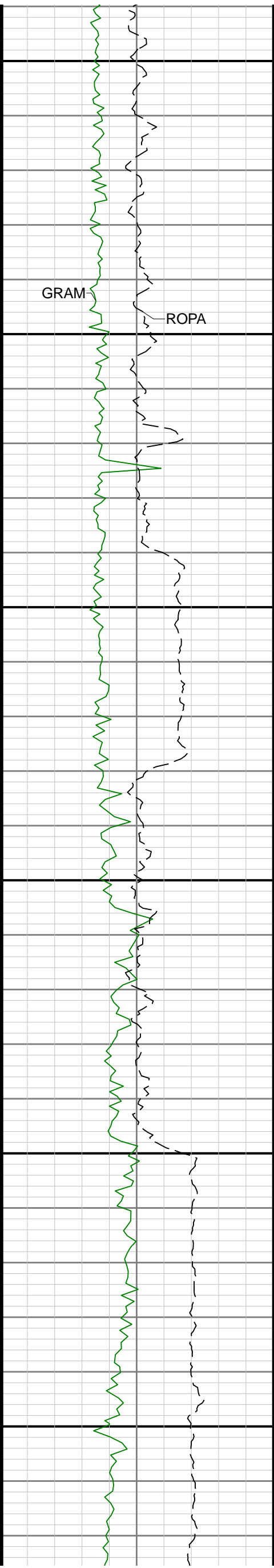


2700

2800

2900

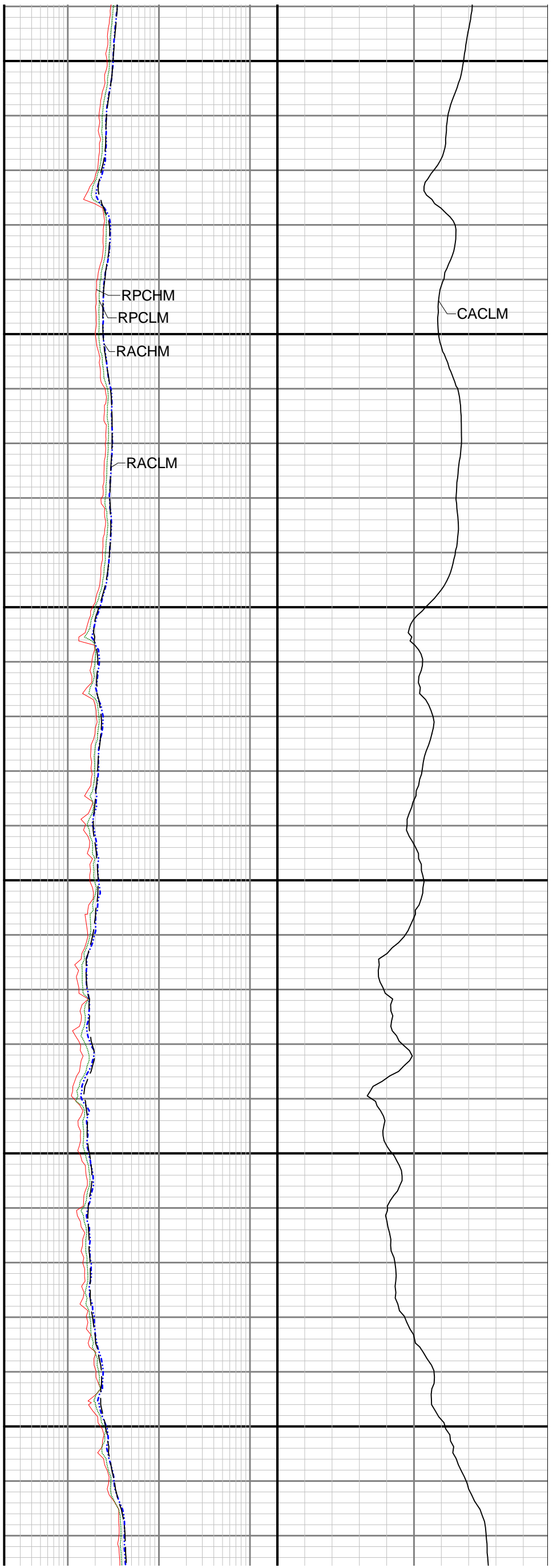


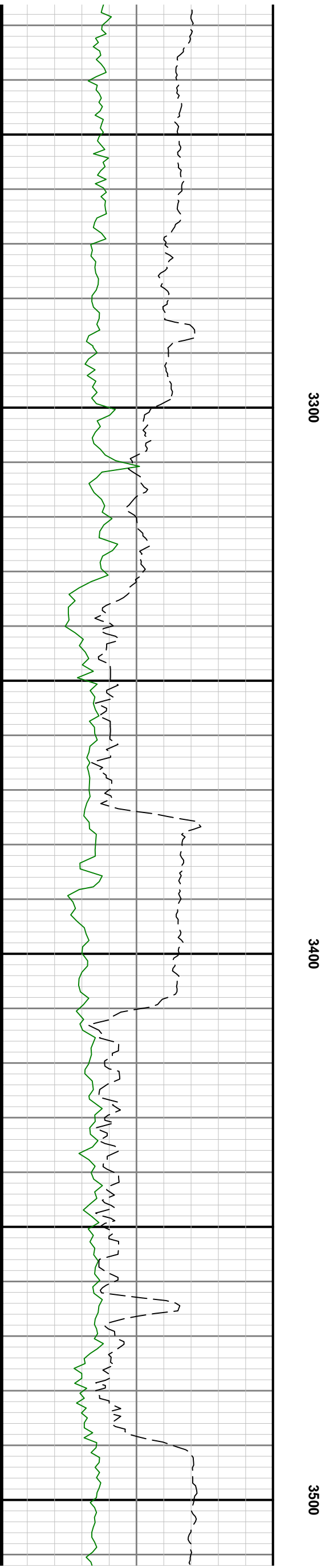


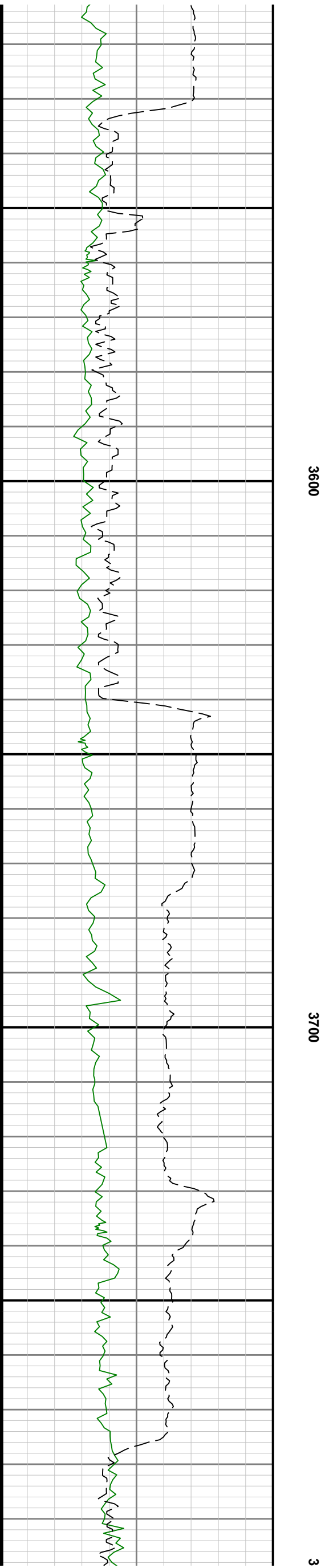
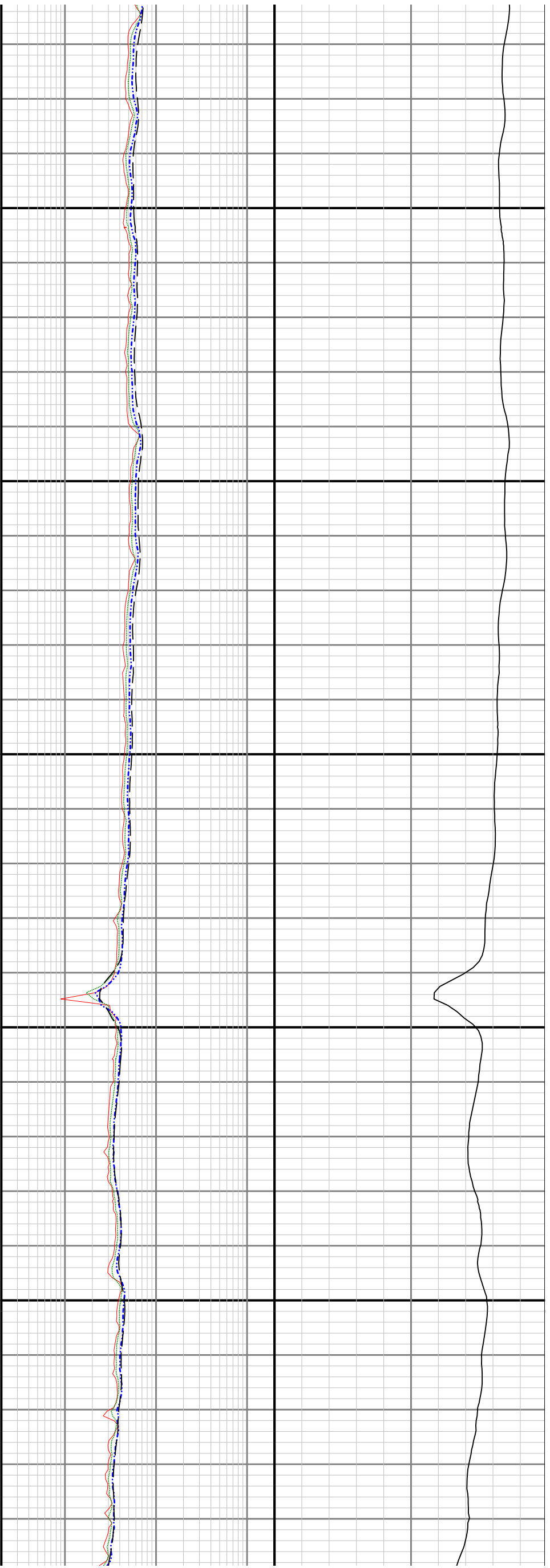
3000

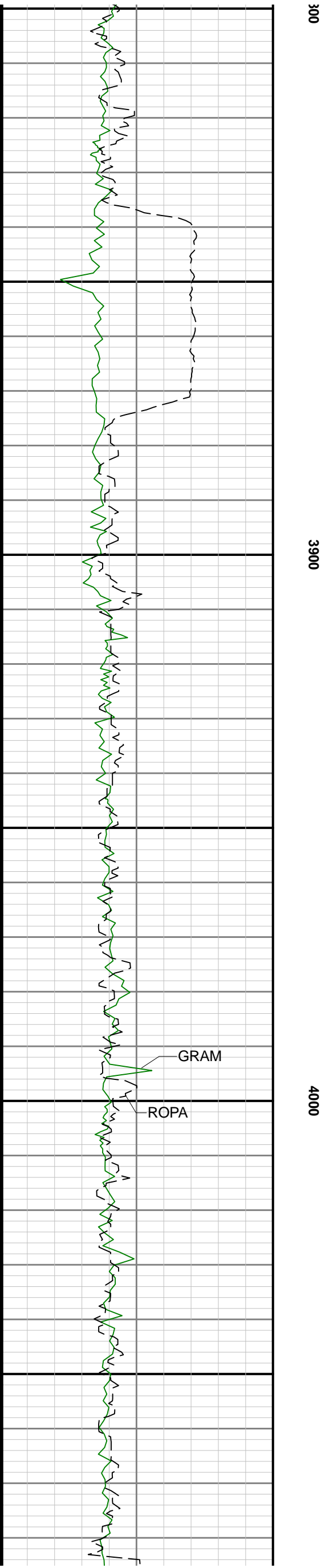
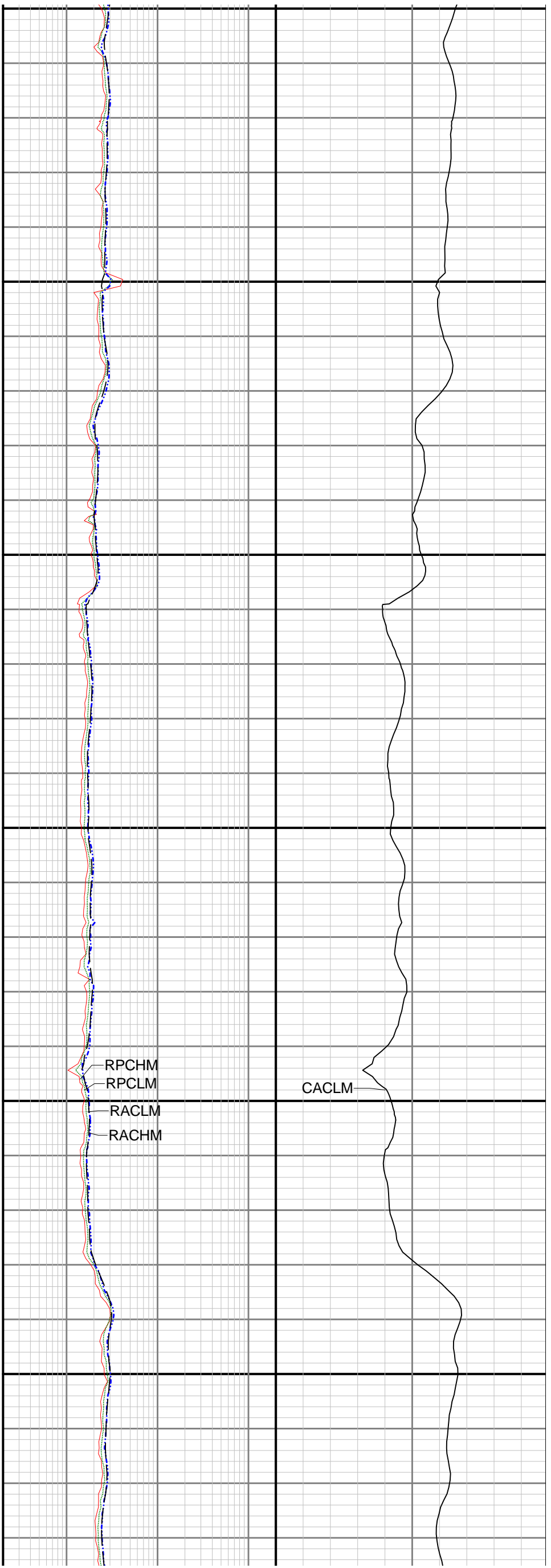
3100

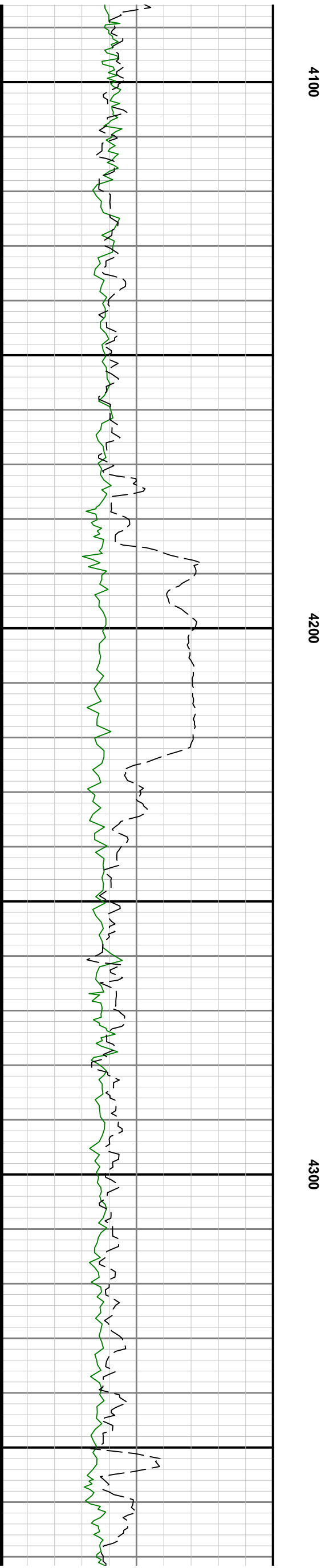
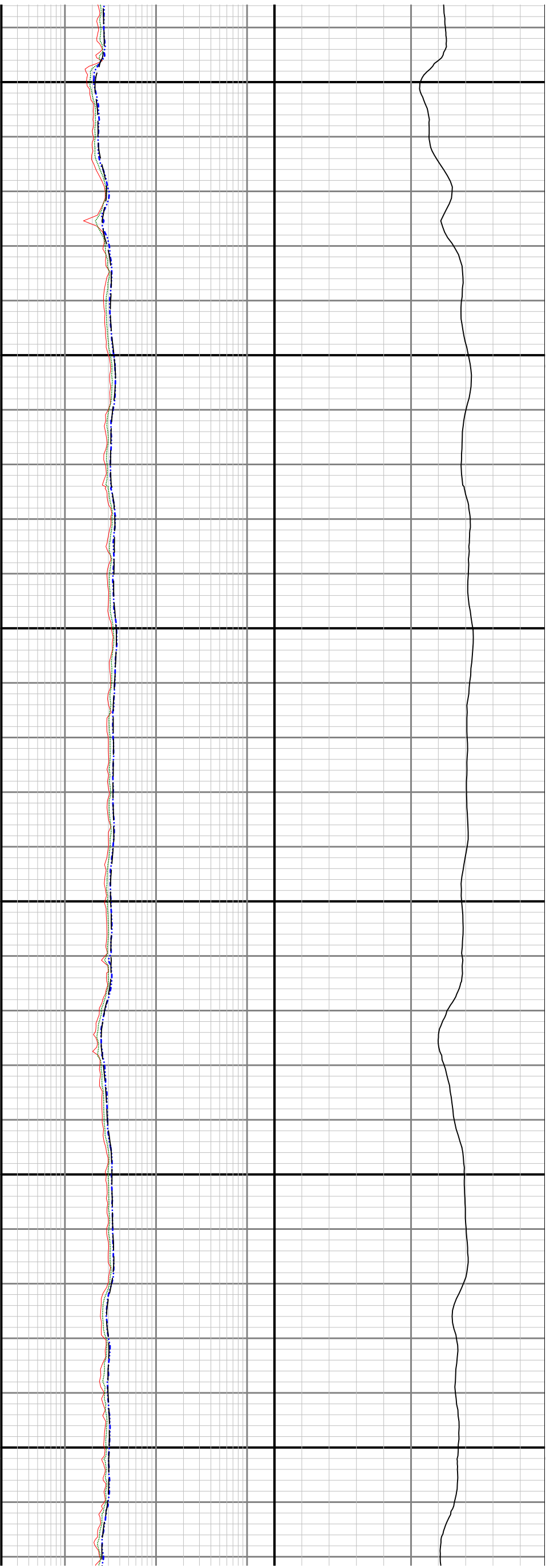
3200









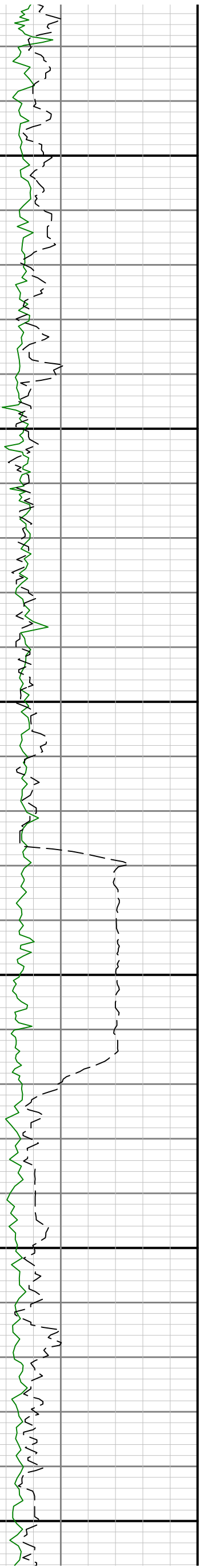


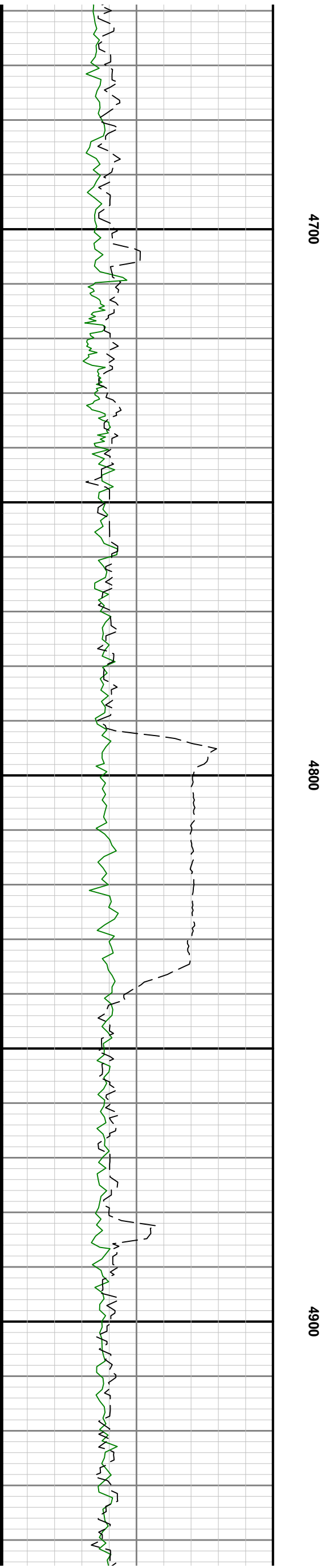
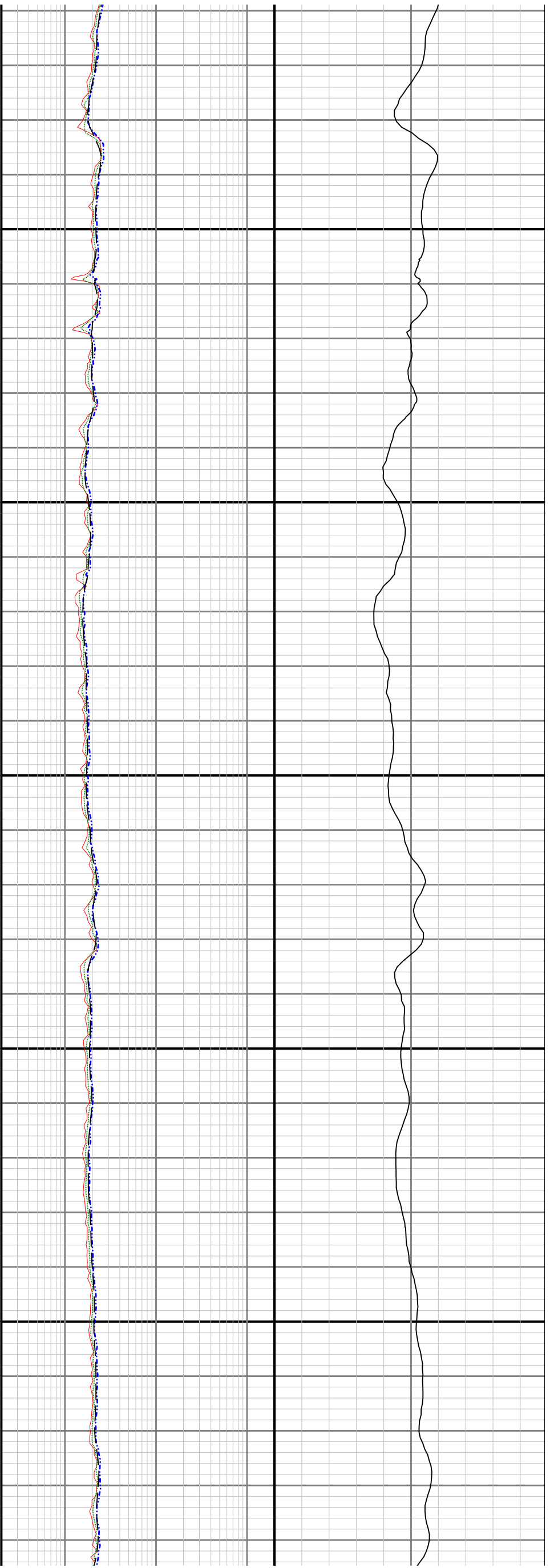


4400

4500

4600



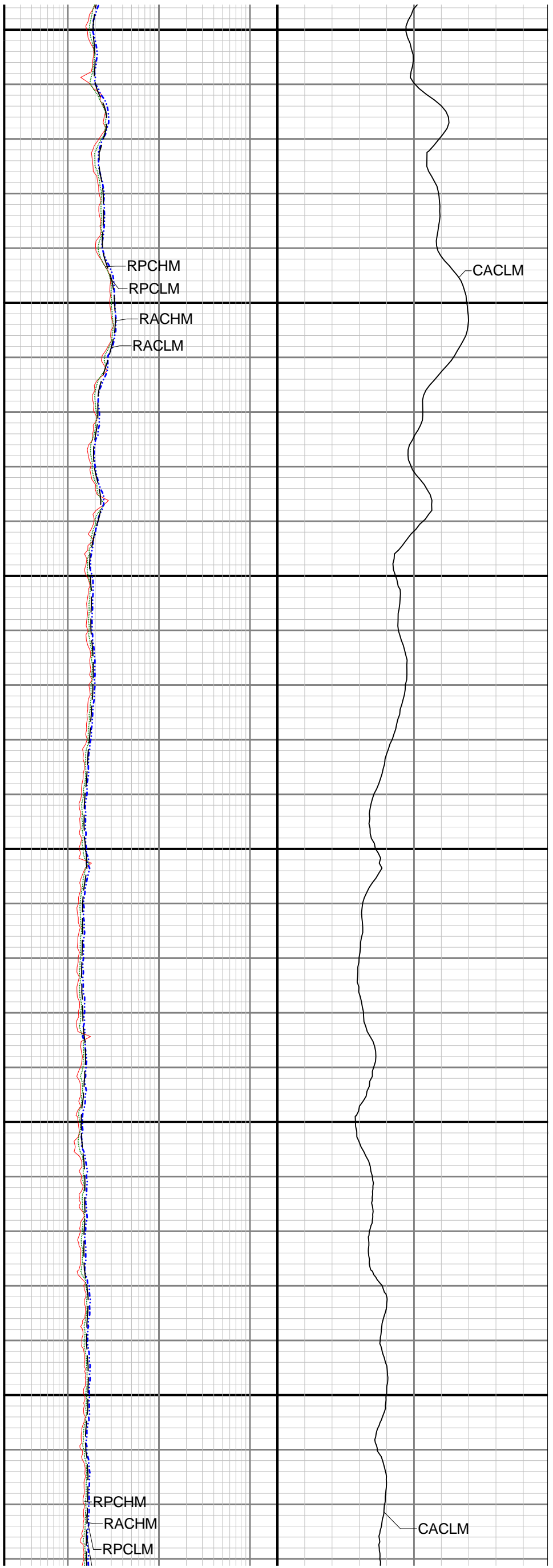


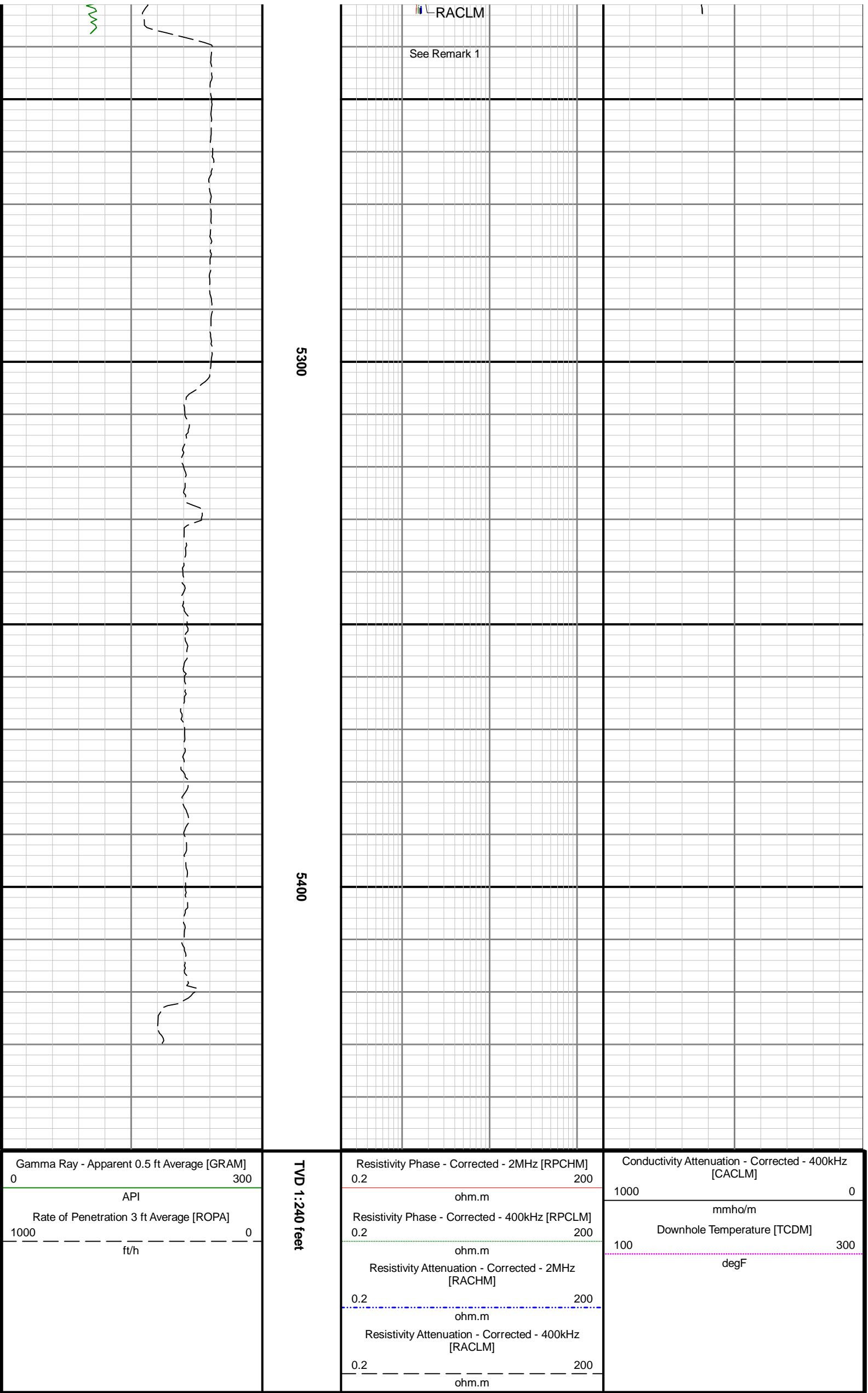


5000

5100

5200





Directional Survey Summary			
Latitude:	040° 40' 59.520" N	Longitude:	103° 59' 09.816" W
North Reference:	Grid	Drill Depth Zero:	Rig Floor
Vertical Datum is:	Ground Level	Vertical Datum to DDZ: (ft)	30.00
Vertical Section North: (ft)	0.00	Vertical Section East: (ft)	0.00
Vertical Section Azimuth: (deg)	185.19		

Grid Convergence: (deg)				-0.98				Magnetic Declination: (deg)				7.92	
Total Correction: (deg)				6.94				TVD Calculation Method:				Minimum Curvature	
Magnetic Correction:				On				Local Magnetic Field: (nT)				52348	
Local Magnetic Dip Angle: (deg)				66.98				Local Gravity Field: (m/s2)				9.801	
Tie-In / Projection	Measured Depth (ft)	Inclination (deg)	Azimuth (deg)	Temperature (degF)	North (ft)	East (ft)	True Vertical Depth (ft)	TVD Subsea (ft)	Vertical Section (ft)	Course Length (ft)	Dog Leg Severity (deg/100ft)	Build Rate (deg/100ft)	Turn Rate (deg/100ft)
Tie-In	0.00	0.00	0.00	N/A	0.00	0.00	0.00	-4884.00	0.00	0.00	0.00	0.00	0.00
	85.00	0.23	244.34	N/A	-0.07	-0.15	85.00	-4799.00	0.09	85.00	0.27	0.27	-136.07
	181.00	0.21	42.33	N/A	-0.03	-0.21	181.00	-4703.00	0.05	96.00	0.45	-0.02	164.57
	272.00	0.39	187.17	N/A	-0.21	-0.14	272.00	-4612.00	0.22	91.00	0.63	0.20	159.16
	367.00	0.57	219.61	N/A	-0.90	-0.48	367.00	-4517.00	0.94	95.00	0.34	0.19	34.15
	461.00	0.35	136.99	N/A	-1.47	-0.58	460.99	-4423.01	1.51	94.00	0.67	-0.23	-87.89
	556.00	0.64	129.13	N/A	-2.01	0.03	555.99	-4328.01	2.00	95.00	0.31	0.31	-8.27
	650.00	0.56	144.33	N/A	-2.72	0.71	649.98	-4234.02	2.64	94.00	0.19	-0.09	16.17
	745.00	0.51	151.95	N/A	-3.47	1.17	744.98	-4139.02	3.35	95.00	0.09	-0.05	8.02
	839.00	0.46	160.87	N/A	-4.19	1.50	838.98	-4045.02	4.04	94.00	0.10	-0.05	9.49
	933.00	0.67	197.32	N/A	-5.07	1.46	932.97	-3951.03	4.92	94.00	0.43	0.22	38.78
	1028.00	0.46	195.27	N/A	-5.97	1.19	1027.97	-3856.03	5.84	95.00	0.22	-0.22	-2.16
	1123.00	0.69	200.81	N/A	-6.88	0.89	1122.96	-3761.04	6.77	95.00	0.25	0.24	5.83
	1217.00	0.32	202.62	N/A	-7.65	0.58	1216.96	-3667.04	7.56	94.00	0.39	-0.39	1.93
	1311.00	0.20	207.08	N/A	-8.04	0.41	1310.96	-3573.04	7.97	94.00	0.13	-0.13	4.74
	1406.00	0.13	241.13	N/A	-8.24	0.24	1405.96	-3478.04	8.18	95.00	0.12	-0.07	35.84
	1501.00	0.18	199.54	N/A	-8.43	0.09	1500.96	-3383.04	8.38	95.00	0.13	0.05	-43.78
	1595.00	0.34	209.88	N/A	-8.81	-0.09	1594.96	-3289.04	8.78	94.00	0.18	0.17	11.00
	1690.00	0.43	173.02	N/A	-9.41	-0.19	1689.95	-3194.05	9.39	95.00	0.27	0.09	-38.80
	1785.00	0.25	320.19	N/A	-9.60	-0.28	1784.95	-3099.05	9.59	95.00	0.69	-0.19	154.92
	1879.00	0.46	292.32	N/A	-9.30	-0.76	1878.95	-3005.05	9.33	94.00	0.28	0.22	-29.65
	1934.00	0.60	277.08	N/A	-9.18	-1.25	1933.95	-2950.05	9.26	55.00	0.36	0.25	-27.71
	1980.00	0.59	250.66	93.2	-9.23	-1.71	1979.95	-2904.05	9.35	46.00	0.59	-0.02	-57.43
	2075.00	2.29	291.12	96.0	-8.71	-3.95	2074.92	-2809.08	9.03	95.00	1.98	1.79	42.59
	2170.00	4.28	304.31	101.4	-6.03	-8.65	2169.76	-2714.24	6.78	95.00	2.23	2.09	13.88
	2264.00	6.26	316.21	106.8	-0.35	-15.09	2263.36	-2620.64	1.71	94.00	2.40	2.11	12.66
	2358.00	7.82	322.40	109.5	8.42	-22.54	2356.65	-2527.35	-6.35	94.00	1.84	1.66	6.59
	2453.00	9.92	323.48	112.2	20.12	-31.35	2450.51	-2433.49	-17.20	95.00	2.22	2.21	1.14
	2547.00	12.48	322.10	114.9	34.64	-42.41	2542.71	-2341.29	-30.66	94.00	2.74	2.72	-1.47
	2642.00	15.06	320.26	114.9	52.23	-56.61	2634.97	-2249.03	-46.90	95.00	2.75	2.72	-1.94
	2736.00	17.88	318.62	117.6	72.46	-73.96	2725.10	-2158.90	-65.47	94.00	3.04	3.00	-1.74
	2831.00	16.96	315.45	120.3	93.27	-93.32	2815.75	-2068.25	-84.45	95.00	1.39	-0.97	-3.34
	2926.00	17.57	314.87	120.3	113.26	-113.20	2906.47	-1977.53	-102.56	95.00	0.67	0.64	-0.61
	3020.00	19.29	316.44	123.0	134.53	-133.96	2995.64	-1888.36	-121.86	94.00	1.90	1.83	1.67
	3114.00	19.31	315.54	125.7	156.87	-155.55	3084.36	-1799.64	-142.16	94.00	0.32	0.02	-0.96
	3209.00	19.34	316.66	128.4	179.52	-177.34	3174.01	-1709.99	-162.74	95.00	0.39	0.03	1.18
	3304.00	19.50	310.57	131.1	201.28	-200.19	3263.61	-1620.39	-182.34	95.00	2.14	0.17	-6.41
	3399.00	19.50	303.91	131.1	220.44	-225.39	3353.18	-1530.82	-199.15	95.00	2.34	0.00	-7.01
	3493.00	19.42	298.19	133.8	236.58	-252.19	3441.81	-1442.19	-212.79	94.00	2.03	-0.09	-6.09
	3587.00	20.03	294.07	133.8	250.52	-280.66	3530.30	-1353.70	-224.11	94.00	1.61	0.65	-4.38
	3682.00	19.98	293.42	133.8	263.61	-310.41	3619.57	-1264.43	-234.45	95.00	0.24	-0.05	-0.68
	3777.00	19.97	294.28	271.7	276.73	-340.09	3708.86	-1175.14	-244.83	95.00	0.31	-0.01	0.91
	3872.00	20.40	299.29	136.5	291.50	-369.32	3798.03	-1085.97	-256.90	95.00	1.87	0.45	5.27
	3966.00	20.49	303.45	139.2	308.59	-397.34	3886.11	-997.89	-271.38	94.00	1.55	0.10	4.43
	4061.00	20.21	306.22	141.9	327.45	-424.45	3975.18	-908.82	-287.71	95.00	1.06	-0.29	2.92
	4155.00	20.31	308.90	144.6	347.29	-450.25	4063.37	-820.63	-305.14	94.00	0.99	0.11	2.85
	4249.00	20.41	311.23	144.6	368.34	-475.27	4151.50	-732.50	-323.83	94.00	0.87	0.11	2.48
	4344.00	20.38	312.03	147.3	390.33	-500.02	4240.54	-643.46	-343.50	95.00	0.30	-0.03	0.84
	4438.00	20.45	311.29	147.3	412.12	-524.51	4328.64	-555.36	-362.99	94.00	0.28	0.07	-0.79
	4533.00	20.29	310.52	150.0	433.78	-549.50	4417.70	-466.30	-382.29	95.00	0.33	-0.17	-0.81
	4628.00	20.36	312.99	152.7	455.75	-574.11	4506.79	-377.21	-401.95	95.00	0.91	0.07	2.60
	4723.00	20.53	312.57	152.7	478.29	-598.47	4595.80	-288.20	-422.19	95.00	0.24	0.18	-0.44
	4817.00	20.34	313.12	152.7	500.60	-622.53	4683.89	-200.11	-442.24	94.00	0.29	-0.20	0.59
	4912.00	20.08	316.88	152.7	523.79	-645.73	4773.04	-110.96	-463.23	95.00	1.39	-0.27	3.96
	5007.00	20.11	315.72	152.7	547.39	-668.28	4862.26	-21.74	-484.69	95.00	0.42	0.03	-1.22
	5101.00	18.96	316.90	152.7	570.11	-690.00	4950.85	66.85	-505.36	94.00	1.29	-1.22	1.26
	5196.00	20.43	313.85	155.4	592.87	-712.50							

	8222.00	90.12	178.49	209.5	-1662.99	-985.72	6020.87	1136.87	1745.34	95.00	1.05	0.00	-1.05
	8316.00	90.09	178.22	209.5	-1756.95	-983.02	6020.70	1136.70	1838.67	94.00	0.29	-0.03	-0.29
	8411.00	90.09	176.91	212.2	-1851.86	-978.98	6020.55	1136.55	1932.83	95.00	1.38	0.00	-1.38
	8506.00	90.18	176.19	212.2	-1946.69	-973.27	6020.32	1136.32	2026.75	95.00	0.76	0.09	-0.76
	8600.00	90.25	176.15	214.9	-2040.48	-966.99	6019.97	1135.97	2119.59	94.00	0.09	0.07	-0.04
	8695.00	90.22	177.40	214.9	-2135.33	-961.64	6019.58	1135.58	2213.56	95.00	1.32	-0.03	1.32
	8789.00	90.25	178.00	214.9	-2229.25	-957.87	6019.20	1135.20	2306.76	94.00	0.64	0.03	0.64
	8883.00	90.22	180.54	214.9	-2323.23	-956.67	6018.81	1134.81	2400.25	94.00	2.70	-0.03	2.70
	8978.00	90.31	183.26	217.6	-2418.17	-959.82	6018.37	1134.37	2495.08	95.00	2.86	0.09	2.86
	9073.00	90.34	184.43	217.6	-2512.95	-966.19	6017.83	1133.83	2590.05	95.00	1.23	0.03	1.23
	9167.00	90.34	183.82	217.6	-2606.71	-972.95	6017.27	1133.27	2684.03	94.00	0.65	0.00	-0.65
	9261.00	90.34	181.16	217.6	-2700.61	-977.04	6016.72	1132.72	2777.92	94.00	2.83	0.00	-2.83
	9356.00	90.31	179.88	220.3	-2795.60	-977.90	6016.18	1132.18	2872.60	95.00	1.35	-0.03	-1.35
	9450.00	90.28	179.41	223.0	-2889.60	-977.32	6015.69	1131.69	2966.16	94.00	0.50	-0.03	-0.50
	9545.00	90.31	180.56	223.0	-2984.60	-977.29	6015.20	1131.20	3060.76	95.00	1.21	0.03	1.21
	9640.00	90.09	181.49	223.0	-3079.58	-978.99	6014.87	1130.87	3155.51	95.00	1.01	-0.23	0.98
	9734.00	90.18	179.84	225.7	-3173.57	-980.08	6014.65	1130.65	3249.22	94.00	1.76	0.10	-1.76
	9829.00	90.22	181.45	223.0	-3268.56	-981.15	6014.32	1130.32	3343.91	95.00	1.70	0.04	1.69
	9923.00	90.03	181.63	225.7	-3362.53	-983.68	6014.11	1130.11	3437.72	94.00	0.28	-0.20	0.19
	10018.00	90.18	179.41	225.7	-3457.52	-984.54	6013.94	1129.94	3532.40	95.00	2.34	0.16	-2.34
	10112.00	90.18	178.36	228.4	-3551.50	-982.71	6013.65	1129.65	3625.83	94.00	1.12	0.00	-1.12
	10207.00	90.18	178.68	228.4	-3646.46	-980.26	6013.35	1129.35	3720.19	95.00	0.34	0.00	0.34
	10302.00	90.15	177.64	228.4	-3741.41	-977.21	6013.07	1129.07	3814.47	95.00	1.10	-0.03	-1.09
	10396.00	90.09	176.71	228.4	-3835.30	-972.57	6012.88	1128.88	3907.55	94.00	0.99	-0.06	-0.99
	10490.00	90.28	177.05	228.4	-3929.16	-967.46	6012.57	1128.57	4000.56	94.00	0.41	0.20	0.36
	10585.00	90.15	178.93	228.4	-4024.09	-964.13	6012.22	1128.22	4094.81	95.00	1.98	-0.14	1.98
	10680.00	90.15	181.72	231.1	-4119.08	-964.67	6011.97	1127.97	4189.46	95.00	2.94	0.00	2.94
	10774.00	90.40	182.64	231.1	-4213.01	-968.24	6011.52	1127.52	4283.33	94.00	1.01	0.27	0.98
	10869.00	90.40	182.36	231.1	-4307.92	-972.38	6010.85	1126.85	4378.22	95.00	0.29	0.00	-0.29
	10963.00	90.34	184.54	231.1	-4401.74	-978.04	6010.25	1126.25	4472.17	94.00	2.32	-0.06	2.32
	11058.00	90.31	180.38	233.8	-4496.63	-982.12	6009.71	1125.71	4567.04	95.00	4.38	-0.03	-4.38
	11152.00	90.22	178.74	233.8	-4590.63	-981.40	6009.27	1125.27	4660.58	94.00	1.75	-0.10	-1.74
	11246.00	90.25	179.32	233.8	-4684.61	-979.80	6008.89	1124.89	4754.04	94.00	0.62	0.03	0.62
	11341.00	90.34	179.93	236.5	-4779.61	-979.18	6008.40	1124.40	4848.59	95.00	0.65	0.09	0.64
	11463.00	90.28	180.14	106.8	-4901.60	-979.26	6007.74	1123.74	4970.09	122.00	0.18	-0.05	0.17
	11558.00	90.25	179.84	231.1	-4996.60	-979.24	6007.30	1123.30	5064.70	95.00	0.32	-0.03	-0.32
	11653.00	90.31	180.38	231.1	-5091.60	-979.42	6006.83	1122.83	5159.32	95.00	0.57	0.06	0.57
	11842.00	90.25	180.38	231.1	-5280.60	-980.68	6005.91	1121.91	5347.66	189.00	0.03	-0.03	0.00
	11936.00	90.28	179.87	236.5	-5374.59	-980.88	6005.48	1121.48	5441.29	94.00	0.54	0.03	-0.54
	12031.00	90.43	180.22	236.5	-5469.59	-980.96	6004.89	1120.89	5535.90	95.00	0.40	0.16	0.37
	12125.00	90.37	180.86	236.5	-5563.58	-981.84	6004.23	1120.23	5629.59	94.00	0.68	-0.06	0.68
	12220.00	90.31	180.95	236.5	-5658.57	-983.34	6003.67	1119.67	5724.32	95.00	0.11	-0.06	0.09
	12314.00	90.40	179.46	239.2	-5752.57	-983.68	6003.08	1119.08	5817.96	94.00	1.59	0.10	-1.59
	12408.00	90.31	179.22	239.2	-5846.56	-982.60	6002.50	1118.50	5911.47	94.00	0.27	-0.10	-0.26
	12597.00	90.28	176.66	239.2	-6035.42	-975.80	6001.53	1117.53	6098.94	189.00	1.35	-0.02	-1.35
	12692.00	90.25	175.75	236.5	-6130.21	-969.52	6001.09	1117.09	6192.78	95.00	0.96	-0.03	-0.96
	12786.00	90.09	176.57	236.5	-6224.00	-963.22	6000.81	1116.81	6285.61	94.00	0.89	-0.17	0.87
	12880.00	89.97	176.54	239.2	-6317.83	-957.57	6000.76	1116.76	6378.54	94.00	0.13	-0.13	-0.03
	13070.00	90.00	175.39	241.9	-6507.35	-944.20	6000.81	1116.81	6566.08	190.00	0.61	0.02	-0.61
	13164.00	90.00	176.90	241.9	-6601.14	-937.88	6000.81	1116.81	6658.91	94.00	1.61	0.00	1.61
	13259.00	90.00	178.38	241.9	-6696.05	-933.97	6000.81	1116.81	6753.09	95.00	1.56	0.00	1.56
	13353.00	90.03	178.90	244.6	-6790.03	-931.74	6000.79	1116.79	6846.47	94.00	0.55	0.03	0.55
	13448.00	90.06	180.62	244.6	-6885.02	-931.34	6000.71	1116.71	6941.04	95.00	1.81	0.03	1.81
	13542.00	90.00	182.36	247.3	-6978.99	-933.79	6000.66	1116.66	7034.84	94.00	1.85	-0.06	1.85
	13637.00	90.15	184.26	247.3	-7073.82	-939.27	6000.54	1116.54	7129.79	95.00	2.01	0.16	2.00
	13732.00	90.25	185.15	241.9	-7168.50	-947.06	6000.21	1116.21	7224.78	95.00	0.94	0.11	0.94
	13826.00	90.12	182.54	247.3	-7262.28	-953.37	5999.90	1115.90	7318.75	94.00	2.78	-0.14	-2.78
	13920.00	90.15	180.55	247.3	-7356.24	-955.90	5999.68	1115.68	7412.55	94.00	2.12	0.03	-2.12
	14015.00	90.12	179.35	247.3	-7451.24	-955.82	5999.46	1115.46	7507.15	95.00	1.26	-0.03	-1.26
	14110.00	90.18	180.17	247.3	-7546.24	-955.42	5999.21	1115.21	7601.73	95.00	0.87	0.06	0.86
	14205.00	90.12	183.03	247.3	-7641.19	-958.07	5998.96	1114.96	7696.53	95.00	3.01	-0.06	3.01
	14299.00	90.22	184.27	371.7	-7735.00	-964.06	5998.68	1114.68	7790.49	94.00	1.32	0.11	1.32
	14394.00	90.15	182.98	247.3	-7829.81	-970.06	5998.37	1114.37	7885.46	95.00	1.36	-0.07	-1.36
	14488.00	90.18	180.74	382.5	-7923.75	-973.11	5998.10	1114.10	7979.29	94.00	2.38	0.03	-2.38
	14583.00	90.18	181.02	247.3	-8018.74	-974.57	5997.81	1113.81	8074.02	95.00	0.29	0.00	0.29
	14678.00	90.15	180.09	244.6	-8113.73	-975.49	5997.53	1113.53	8168.71	95.00	0.98	-0.03	-0.98
	14773.00	90.22	179.62	247.3	-8208.73	-975.25	5997.22	1113.22	8263.30	95.00	0.50	0.07	-0.49
	14867.00	90.18	178.55	247.3	-8302.72	-973.75	5996.90	1112.90	8356.76	94.00	1.14	-0.04	-1.14
	14962.00	90.22	175.86	250.0	-8397.59	-969.12	5996.56	1112.56	8450.83	95.00	2.83	0.04	-2.83
	15056.00	90.12	176.56	250.0	-8491.39	-962.91	5996.29	1112.29	8543.68	94.00	0.75	-0.11	0.74
	15151.00	90.25	176.82	250.0	-8586.23	-957.42	5995.98	1111.98	8637.63	95.00	0.31	0.14	0.27
	15245.00	90.22	177.27	250.0	-8680.10	-952.57	5995.59	1111.59	8730.68	94.00	0.48	-0.03	0.48
	15340.00	90.18	177.75	250.0	-8775.01	-948.45	5995.26	1111.26	8824.83	95.00	0.51	-0.04	0.51
	15434.00	90.18	177.96	250.0	-8868.95	-944.93	5994.97	1110.97	8918.06	94.00	0.22	0.00	0.22
	15529.00	90.15	177.36	274.4	-8963.87	-941.05	5994.69	1110.69	9012.24	95.00	0.63	-0.03	-0.63
	15624.00	90.12	177.37	250.0	-9058.77	-936.68	5994.47	1110.47	9106.36	95.00	0.03	-0.03	0.01
	15718.00	90.12	179.25	250.0	-9152.72	-933.91	5994.27	1110.27	9199.68	94.00	2.00	0.00	2.00
	15813.00	90.18	181.58	252.7	-9247.71	-934.60	5994.02	1110.02	9294.34	95.00	2.45	0.06	2.45
	16002.00	90.25	178.82	252.7	-9436.69	-935.26	5993.31	1109.31	9482.60	189.00	1.46	0.04	-1.46
	16096.00	90.25	183.77	252.7	-9530.64	-937.38	5992.90	1108.90	9576.36	94.00	5.27	0.00	5.27
	16191.00	90.22	181.93	252.7	-9625.51	-942.11	5992.51	1108.51	9671.27	95.00	1.94	-0.03	-1.94
	16285.00	90.22	178.74	360.9	-9719.50	-942.66	5992.15	1108.15	9764.92	94.00	3.39	0.00	-3.39
	16379.00	90.12	178.75	250.0	-9813.48	-940.60	5991.87	1107.87	9858.33	94.00	0.11	-0.11	0.01
	16474.00	90.22	179.39	252.7	-9908.46	-939.05	5991.59	11					