




Physical Address: 34834 Annie Cir.
Mail to: Box 2372, Elizabeth, CO 80107
Ph. 303-243-0037
www.franesurveying.com
Job # 18-106-McLintock Tank Batt.

Frane Surveying of Elizabeth, Colorado, has in accordance with a request from **Grand Mesa Operating CO.** has determined the Center of the **McIntock Production Facility** to be **124 feet FSL**, and **90 feet FWL**, of **SECTION 9**, Township **5s**, Range **53w** of the 6th Principal Meridian, **Washington County**, Colorado.

Date: Staked on 12/10/18 drawn on 12/10/18.

Re: Staked by Elijah Frane

Drawn: Drawn by Elijah Frane

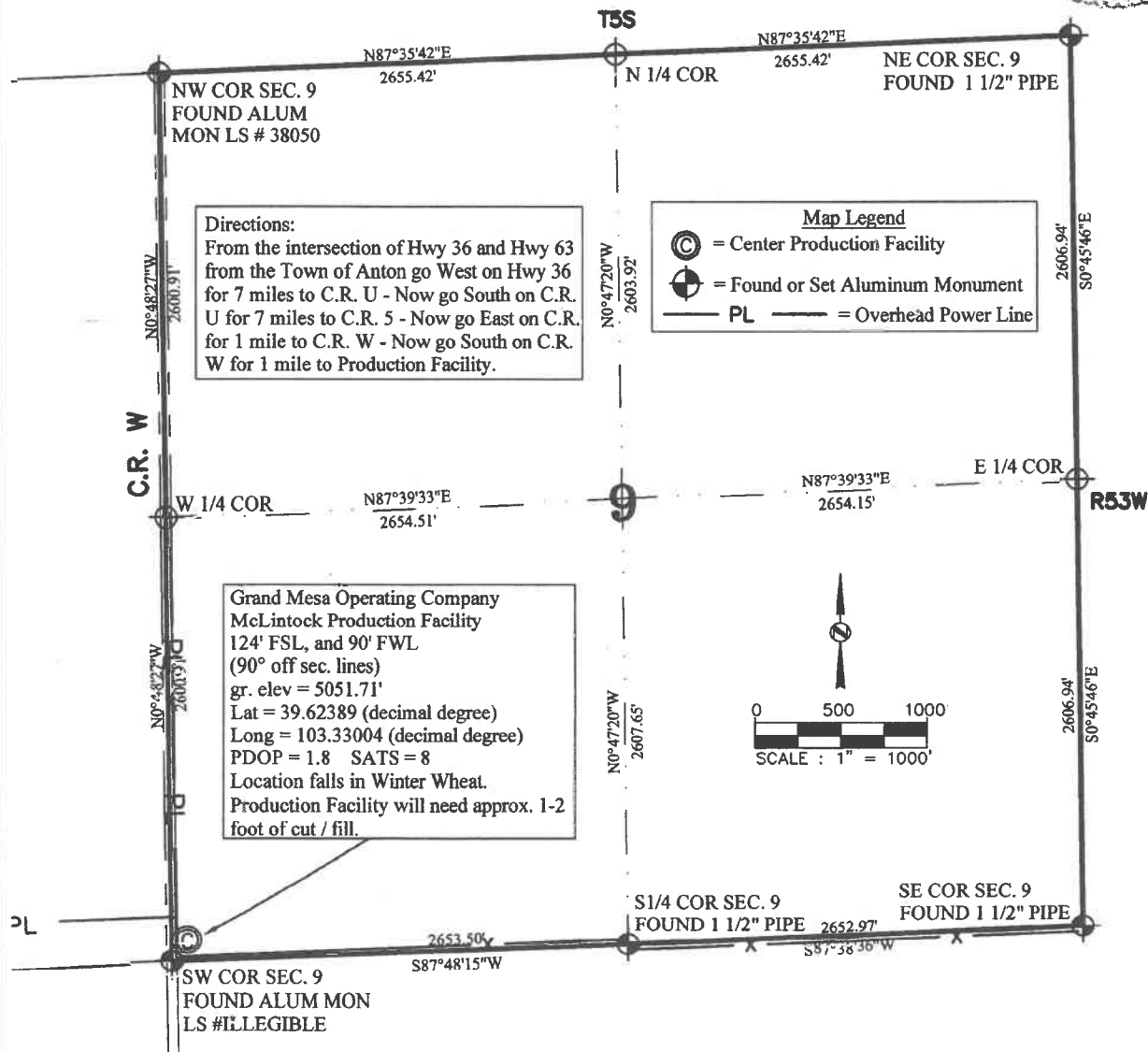
Basis of Elevation Spot: USGS BM = ANTON, PID = KJ0478, H-Order = Second, V-Order = Third, Stability = Unknown
P-DOP = 1.90, Sats = 8 US NAD 83 CO-C, Lat. = 39.69930, Long. = W103.21294 = 4903.75 gr. (us) 

Notes: See location drawing for improvements within 500 feet of proposed production facility.

The ground elevation at staked location = 5051.71'.

This drawing does not represent a monumented survey or Land Survey Plat.

Basis of Bearing: Bearings were determined based on the North line of SECTION 9 to bear N87°35'42"E with all other bearings contained herein relative thereto.





FRANE SURVEYING INC.

Physical Address: 34834 Annie Cir.
Mail to: Box 2372, Elizabeth, CO 80107
Ph. 303-243-0037
www.franesurveying.com
Job # 18-106-McLintock Tank Batt.

Frane Surveying of Elizabeth, Colorado, has in accordance with a request from **Grand Mesa Operating CO.** has determined the Center of the **McLintock Production Facility** to be **124 feet FSL**, and **90 feet FWL**, of **SECTION 9**, Township **5s**, Range **53w** of the 6th Principal Meridian, **Washington County**, Colorado.

Date: Staked on 12/10/18 drawn on 12/10/18.

Re: Staked by Elijah Frane
Drawn: Drawn by Elijah Frane

Basis of Elevation Spot: USGS BM = ANTON, PID = KJ0478, H-Order = Second, V-Order = Third, Stability = Unknown
P-DOP = 1.90, Sats = 8 US NAD 83 CO-C, Lat. = 39.69930, Long. = W103.21294 = 4903.75 gr. (us F.T.)

Notes: See location drawing for improvements within 500 feet of proposed production facility.
The ground elevation at staked location = 5051.71'.
This drawing does not represent a monumented survey or Land Survey Plat.

Basis of Bearing: Bearings were determined based on the North line of SECTION 9 to bear N87°35'42"E with all other bearings contained herein relative thereto.

