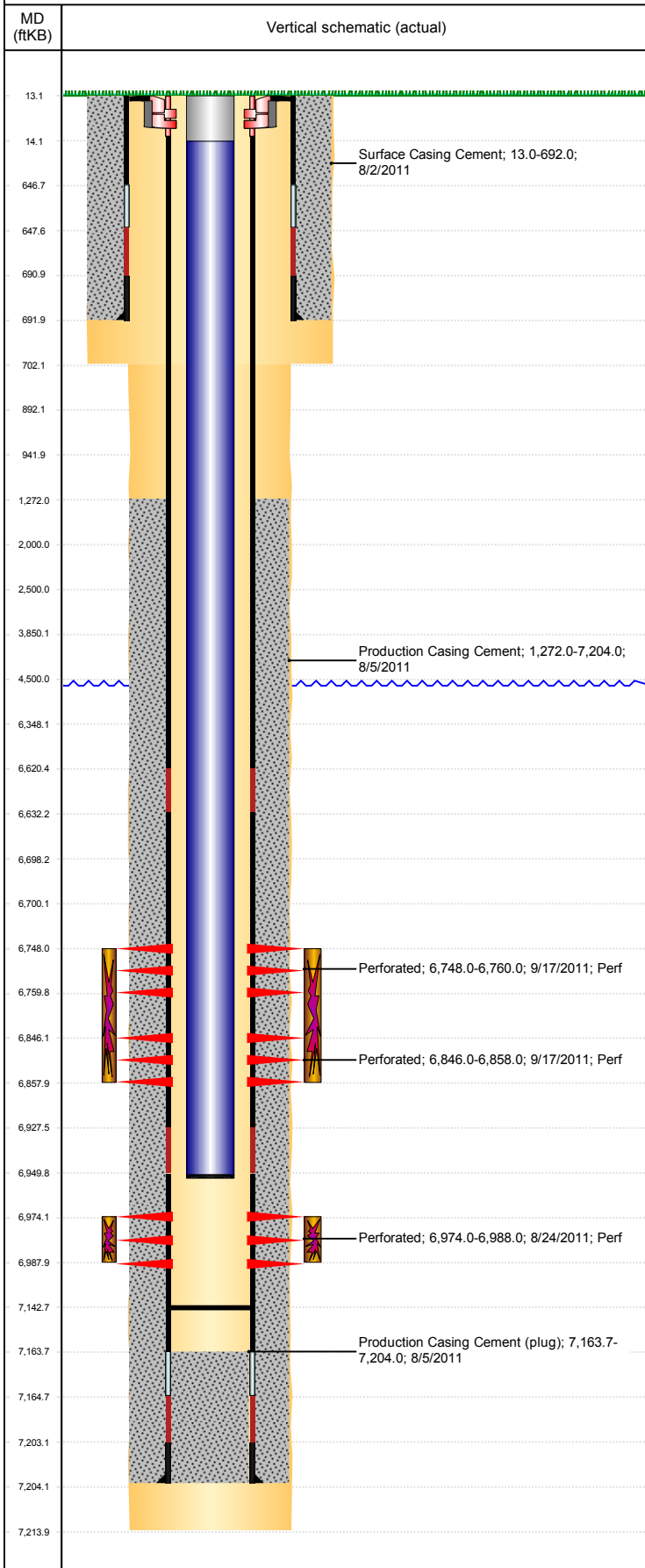


Well Name: LDS D17-18

VERTICAL, ORIGINAL HOLE, 12/12/2018 8:25:32 AM



Well Header									
API 05-123-31989		Business Unit DJ BASIN			District 15		Well Config VERTICAL		
KB - GL / MSL (ft...) 13.00		Spud Date 8/1/2011		P & A Date		Well Production Status SI		SoRT No	
Comment									
Surface Location (Congressional)									
Qtr 3 NW	Qtr 4 NE	Section 17	Twonshp 3	Twonsh... N	Range 64	Rng E/... W	Actual Latitude (°) 40.22914163	Actual Longitude (°) -104.57448882	
Wellbore Sections									
Section Des			Size (in)			Act Top, MD (ftKB)		Act Btm, MD (ftKB)	
SURFACE			12 1/4			13		702	
PRODUCTION			7 7/8			702		7,214	
Casing Strings									
Csg Des			Run Date		OD (in)	Wt/Len (lb/ft)	Grade	Top, MD (ftKB)	MD (ftKB)
Surface			8/3/2011		8 5/8	24.00	J-55	13.0	692.0
Production			8/5/2011		4 1/2	11.60	M-80	13.0	7,204.0
Cement									
Des					Start Date		Top (ftKB)		Btm (ftKB)
Surface Casing Cement					8/2/2011		13.0		692.0
Production Casing Cement					8/5/2011		1,272.0		7,204.0
Zone Statuses									
Zone Name	Status Date	Status	Fluid Type	Job				Prod Method	
NIOBRARA	11/21/2011	PR	Water					Flowing	
NIOBRARA	3/10/2017	SI	Water					Flowing	
CODELL	11/21/2011	PR				Flowing			
CODELL	3/10/2017	SI							
Perforation Data									
Linked Zone		Bnch/Stg	Entered Shot Total	Top (ftKB)		Btm (ftKB)		Date	
NIOBRARA, ORIGINAL HOLE		B	24	6,748.00		6,760.00		9/17/2011	
NIOBRARA, ORIGINAL HOLE		C	24	6,846.00		6,858.00		9/17/2011	
CODELL, ORIGINAL HOLE		1	56	6,974.00		6,988.00		8/24/2011	
Stimulation Intervals									
Zone				Start Date		Top (ftKB)		Btm (ftKB)	
NIOBRARA, ORIGINAL HOLE				9/17/2011		6,748.0		6,858.0	
CODELL, ORIGINAL HOLE				9/17/2011		6,974.0		6,988.0	
Other In Hole									
Run Date		Des				OD (in)	Top (ftKB)	Btm (ftKB)	
Logs									
Date		Type				Top, MD (ftKB)		Btm, MD (ftKB)	
8/5/2011		Caliper/Comp. Density/Neutron/GR/SP/ML				698.0		7,214.0	
8/5/2011		DIL/GR/SP/Caliper				698.0		7,214.0	
8/22/2011		CBL/CCL/GR/VDL				1,150.0		7,146.0	
Plug Back Total Depths									
Date		Type		Com				Depth (ftKB)	
8/22/2011		FILL		DEPTH-LOGGER/CBL				7,146.0	
12/7/2011		FILL		DRILLED OUT CFTP AND C/O SAND TO 7142.64' KB AND DI...				7,142.6	