



December 11, 2018

Oil and Gas Conservation Commission  
The Chancery Building  
Attn: Julie Murphy, Director  
1120 Lincoln St., Suite 801  
Denver, CO 80203

**Re: Rule 318A.e 30-Day Notice Certification Letter**  
HDI KF 10-9H  
Township 1 North, Range 65 West, 6<sup>th</sup> P.M.  
Section 10: SESE (SHL Location)  
Weld County, Colorado

Dear Ms. Murphy,

Verdad Resources LLC (Verdad) hereby certifies to the Director that a thirty (30-day) notice has been given by certified mail to all mineral interest owners in the proposed spacing unit for the well identified below. We have not received any objections to this well location or proposed spacing unit.





Well Name / Number	Form 2 Doc #	TPZ Footages (T1N-R65W-Sec.10)	BHL Footages (T1N-R65W-Sec.3)	Proposed Spacing Unit Configuration
HDI KF 10-9H	401571755	460' FSL, 480' FEL	2340' FNL, 480' FEL	T1N-R65W-Sec.3: E2SE, SENE; Sec.10: E2E2 (280 acres)

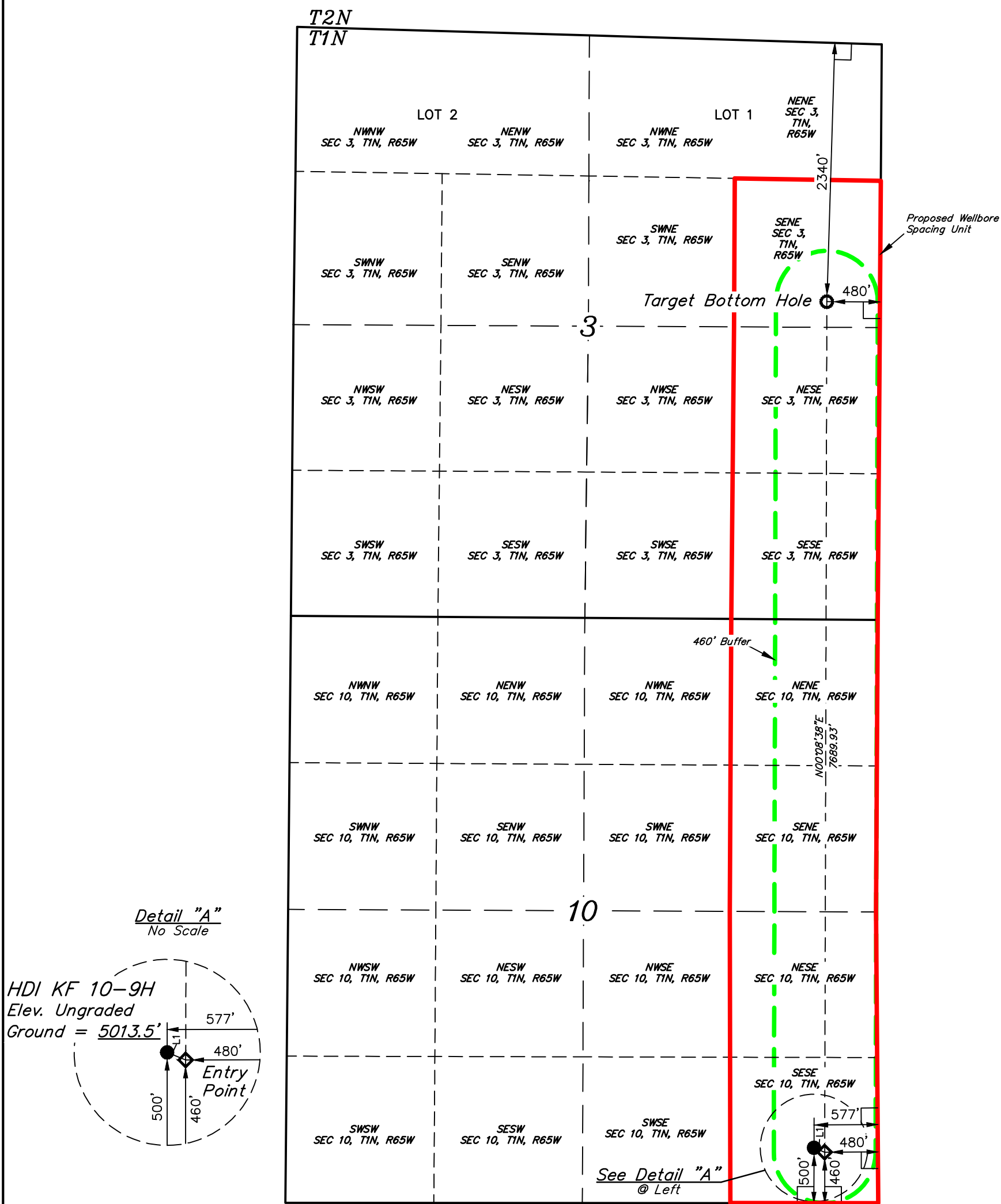
Verdad hereby requests the Director to approve the proposed wells. If you should have any questions or concerns regarding this request, please contact me at 214-838-2775 or [rowe@verdadoil.com](mailto:rowe@verdadoil.com)

Sincerely,

Rick Rowe  
Land Manager

*T1N, R65W, 6th P.M.*

-  = 90° SYMBOL  
 = PROPOSED WELLHEAD.  
 = ENTRY POINT.  
 = TARGET BOTTOM HOLE.



LINE TABLE		
LINE	DIRECTION	LENGTH
L1	S67°33'37"E	104.75'



<b>NAD 83 (SURFACE LOCATION)</b>	<b>NAD 83 (ENTRY POINT)</b>	<b>NAD 83 (TARGET BOTTOM HOLE)</b>
LATITUDE = 40°03'36.38" (40.060105)	LATITUDE = 40°03'35.98" (40.059995)	LATITUDE = 40°04'51.96" (40.081099)
LONGITUDE = 104°38'33.18" (104.642551)	LONGITUDE = 104°38'31.94" (104.642205)	LONGITUDE = 104°38'31.68" (104.642134)
<b>NAD 27 (SURFACE LOCATION)</b>	<b>NAD 27 (ENTRY POINT)</b>	<b>NAD 27 (TARGET BOTTOM HOLE)</b>
LATITUDE = 40°03'36.44" (40.060122)	LATITUDE = 40°03'36.04" (40.060012)	LATITUDE = 40°04'52.02" (40.081116)
LONGITUDE = 104°38'31.31" (104.642031)	LONGITUDE = 104°38'30.07" (104.641685)	LONGITUDE = 104°38'29.81" (104.641614)
<b>STATE PLANE NAD 83 (CO. NORTH)</b>	<b>STATE PLANE NAD 83 (CO. NORTH)</b>	<b>STATE PLANE NAD 83 (CO. NORTH)</b>
N: 1265901.92 E: 3240001.95	N: 1265862.87 E: 3240099.12	N: 1273550.49 E: 3240044.72
<b>STATE PLANE NAD 27 (CO. NORTH)</b>	<b>STATE PLANE NAD 27 (CO. NORTH)</b>	<b>STATE PLANE NAD 27 (CO. NORTH)</b>
N: 265904.67 E: 2240153.75	N: 265865.63 E: 2240250.92	N: 273553.16 E: 2240196.44

CERTIFICATE

THIS IS TO CERTIFY THAT THE ABOVE MAP WAS PREPARED FROM FIELD NOTES OF ACTUAL SURVEYS MADE BY ME OR UNDER MY SUPERVISION AND THAT THE SAME ARE TRUE AND CORRECT TO THE BEST OF MY KNOWLEDGE AND BELIEF.

REGISTERED LAND SURVEYOR  
REGISTRATION NO. 28285  
STATE OF COLORADO  
12/11/18

## BASIS OF BEARINGS

BASIS OF BEARINGS IS A G.P.S. OBSERVATION

## BASIS OF ELEVATION

USGS COOPERATIVE BASE NETWORK CONTROL STATION, DESIGNATION "HUDSON CC".  
NGS DATA SHEET LISTS THE NAVD 88 ELEVATION AS BEING 4999 FEET.



**UELS, LLC**  
Corporate Office \* 85 South 200 East  
Vernal, UT 84078 \* (435) 789-1017

**VERDAD RESOURCES LLC**

**HDI KF 10-9H**  
**SE 1/4 SE 1/4, SECTION 10, T1N, R65W, 6th P.M.**  
**WELD COUNTY, COLORADO**

<b>SURVEYED BY</b>	GREG WEIMER	10-30-17	<b>SCALE</b>
<b>DRAWN BY</b>	K.B.	12-11-18	1" = 1000'

## WELLBORE SPACING UNIT