

HALLIBURTON

iCem[®] Service

TERRA ENERGY PARTNERS

United States of America, COLORADO

Date: Saturday, August 25, 2018

CLOUGH NR 411-3

API# 05-045-23900

Terra NR 411-3 Surface

Job Date: Tuesday, July 24, 2018

Sincerely,

Grand Junction Cement Engineering

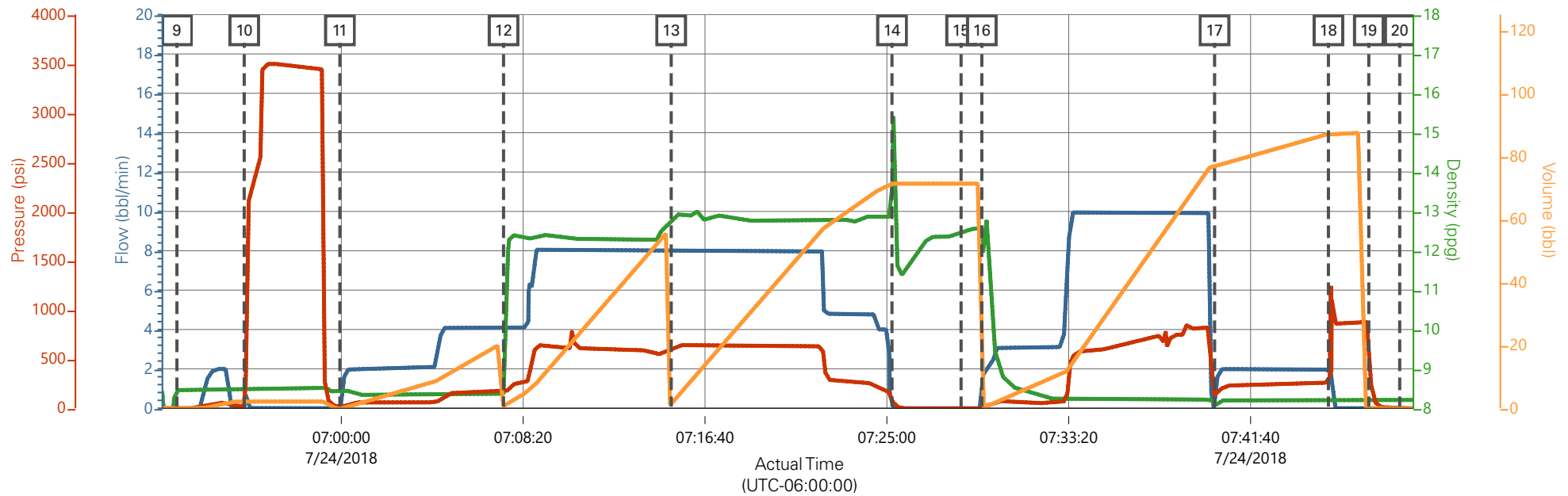
1.0 Real-Time Job Summary

1.1 Job Event Log

Type	Seq. No.	Graph Label	Date	Time	Source	Comb Pump Rate (bbl/min)	DH Density (ppg)	PS Pump Press (psi)	Pump Stg Tot (bbl)	Comments
Event	1	Call Out	7/23/2018	20:30:00	USER					REQUESTED ON LOCATION 7/24/18 @ 02:30
Event	2	Depart Yard Safety Meeting	7/23/2018	21:55:00	USER					JSA COMPLETED
Event	3	Crew Leave Shop	7/23/2018	22:00:00	USER					
Event	4	Arrive At Loc	7/24/2018	00:00:00	USER					RIG DRILLING TO TD
Event	5	Assessment Of Location Safety Meeting	7/24/2018	00:05:00	USER					JSA COMPLETED
Event	6	Pre-Rig Up Safety Meeting	7/24/2018	00:25:00	USER					JSA COMPLETED
Event	7	Rig-Up Equipment	7/24/2018	00:30:00	USER					
Event	8	Pre-Job Safety Meeting	7/24/2018	06:30:00	USER					JSA COMPLETED
Event	9	Start Job	7/24/2018	06:52:28	COM4					9 5/8"-36# CASING IN 13 1/2" OH, TD 1133', TP 1127', ST 42.2', MUD 9.4 PPG, WATER TEMP 60, CHLORIDES 0, PH 7
Event	10	Test Lines	7/24/2018	06:55:33	COM4			3000.00		TEST LINES TO 3000 PSI
Event	11	Pump Spacer 1	7/24/2018	06:59:56	COM4	4.00	8.33	130.00	10.00	20 BBLS FRESH WATER
Event	12	Pump Lead Cement	7/24/2018	07:07:26	COM4	8.00	12.30	600.00	53.00	53 BBLS LEAD CEMENT, 125 SKS @ 12.3 PPG / 2.38 YLD / 13.77 GAL/SK
Event	13	Pump Tail Cement	7/24/2018	07:15:07	COM4	8.00	12.80	640.00	65.80	65.8 BBLS TAIL CEMENT, 175 SKS @ 12.8 PPG / 2.11 YLD / 11.78 GAL/SK

Event	14	Shutdown	7/24/2018	07:25:14	COM4					
Event	15	Drop Plug	7/24/2018	07:28:24	COM4					PLUG AWAY
Event	16	Pump Displacement	7/24/2018	07:29:21	COM4	10.00	8.33	830.00	85.40	85.4 BBLS FRESH WATER DISPLACEMENT
Event	17	SLOW RATE	7/24/2018	07:40:01	COM4	2.00	8.33	830.00	75.00	SLOW RATE TO 2 BBL/MIN, 830 PSI TO 210 PSI
Event	18	Bump Plug	7/24/2018	07:45:14	USER	2.00	8.33	260.00	85.4	PLUG BUMPED AT CALCULATED, FINAL CIRCULATING PRESSURE 260 PSI BROUGHT TO 860 PSI
Event	19	CHECK FLOATS	7/24/2018	07:47:05	COM4					FLOATS HELD, 1 BBL BACK TO PUMP
Event	20	End Job	7/24/2018	07:48:30	COM4					PIPE LEFT STATIC, GOOD RETURNS THROUGHOUT, 20 BBLS CEMENT TO SURFACE, 20@ SUGAR USED, NO ADD HOURS CHARGED
Event	21	Pre-Rig Down Safety Meeting	7/24/2018	08:00:00	USER					JSA COMPLETED
Event	22	Rig-Down Equipment	7/24/2018	08:05:00	USER					
Event	23	Pre-Convoy Safety Meeting	7/24/2018	08:55:00	USER					JSA COMPLETED
Event	24	Crew Leave Location	7/24/2018	09:00:00	USER					THANK YOU FOR CHOOSING HALLIBURTON CEMENTING OF GRAND JUNCTION, CO - RYAN MARTIN AND CREW

TEP - CLOUGH NR 411-3 - 9 5/8" SURFACE CASING



Comb Pump Rate (bbl/min) 0 DH Density (ppg) 8.21 PS Pump Press (psi) -2 Pump Stg Tot (bbl) 0

Description	Actual Time (UTC-06:00:00)	Comb Pump Rate (bbl/min)	DH Density (ppg)	PS Pump Press (psi)	Pump Stg Tot (bbl)	
9 Start Job	06:52:28	0.00	8.47	-1.00	0.00	
10 Test Lines	06:55:33	0.00	8.45	14.00	2.10	
11 Pump Spacer 1	06:59:56	0.00	8.43	14.00	0.00	
12 Pump Lead Cement	07:07:26	4.10	8.35	160.00	0.70	
13 Pump Tail Cement	07:15:07	8.00	12.78	615.00	1.40	
14 Shutdown	07:25:14	0.00	13.49	75.00	71.30	
15 Drop Plug	07:28:24	0.00	12.47	-5.00	71.30	
16 Pump Displacement	07:29:21	1.70	12.57	3.00	0.00	
17 SLOW RATE	07:40:01	0.00	8.04	122.00	77.10	
18 Bump Plug	07:45:14	2.00	8.20	258.00	87.10	
19 CHECK FLOATS	07:47:05	0.00	8.22	876.00	0.00	
20 End Job	07:48:30	0.00	8.21	-1.00	0.00	

▼ HALLIBURTON | iCem® Service

Created: 2018-07-23 21:52:51, (UTC-06:00), Version: 4.5.139

Edit

Customer : TERRA ENERGY PARTNERS
Representative : ROBERT BROWN

Job Date : 7/24/2018
Sales Order # : 904998136

Well : CLOUGH NR 411-3
ELITE #8 : JAMES LEIST / RYAN MARTIN

TEP - CLOUGH NR 411-3 - 9 5/8" SURFACE CASING

