

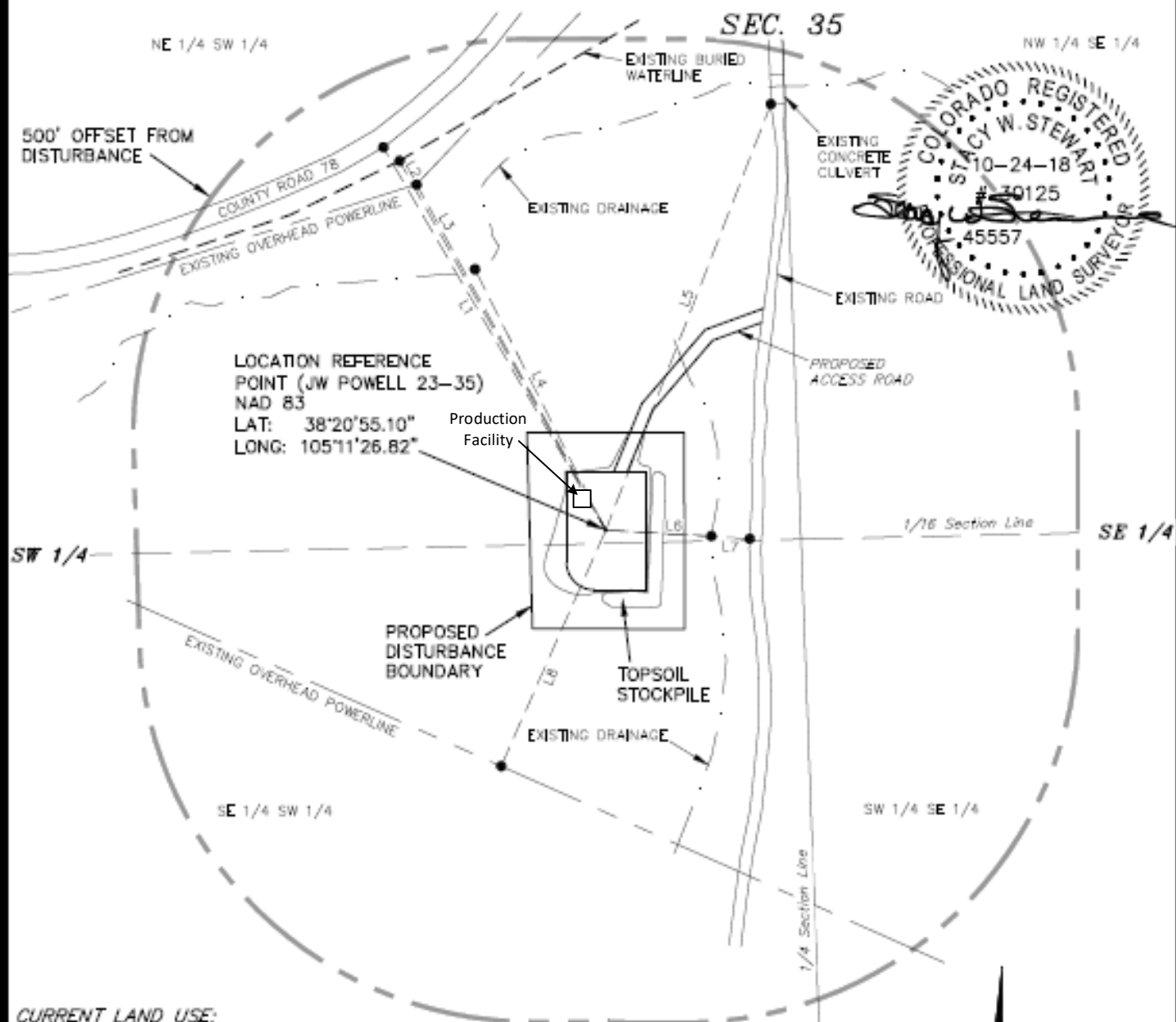
AusCo Petroleum, Inc.

LOCATION DRAWING

JW POWELL 23-35

Pad Location: NESW Section 35, T19S, R70W, 6th P.M.

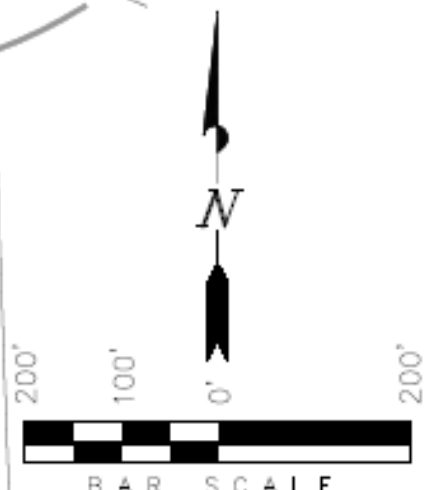
SEC. 35



CURRENT LAND USE:
NON-CROP LAND
RANGELAND

FEATURE	FROM LOCATION REFERENCE POINT
Building	>5,280'
Building Unit	>5,280'
High Occupancy Building Unit	>5,280'
Designated Outside Activity Area	>5,280'
Public Road	N29°W 563'
Above Ground Utility	S25°W 328'
Railroad	>5,280'
Property Line	N01°E 1,290'

LINE TABLE		
LINE	DIRECTION	LENGTH
L1	N29°W	563'
L2	N28°W	538'
L3	N27°W	501'
L4	N25°W	371'
L5	N23°E	581'
L6	S85°E	134'
L7	S85°E	183'
L8	S25°W	328'



SURVEYED BY: C.S. DATE SURVEYED: 10-15-18
 DRAWN BY: D.COX DATE DRAWN: 10-19-18
 SCALE: 1" = 200' REVISED:

Tri State
Land Surveying, Inc.
180 NORTH VERNAL AVE. VERNAL, UTAH 84078
(435) 781-2501