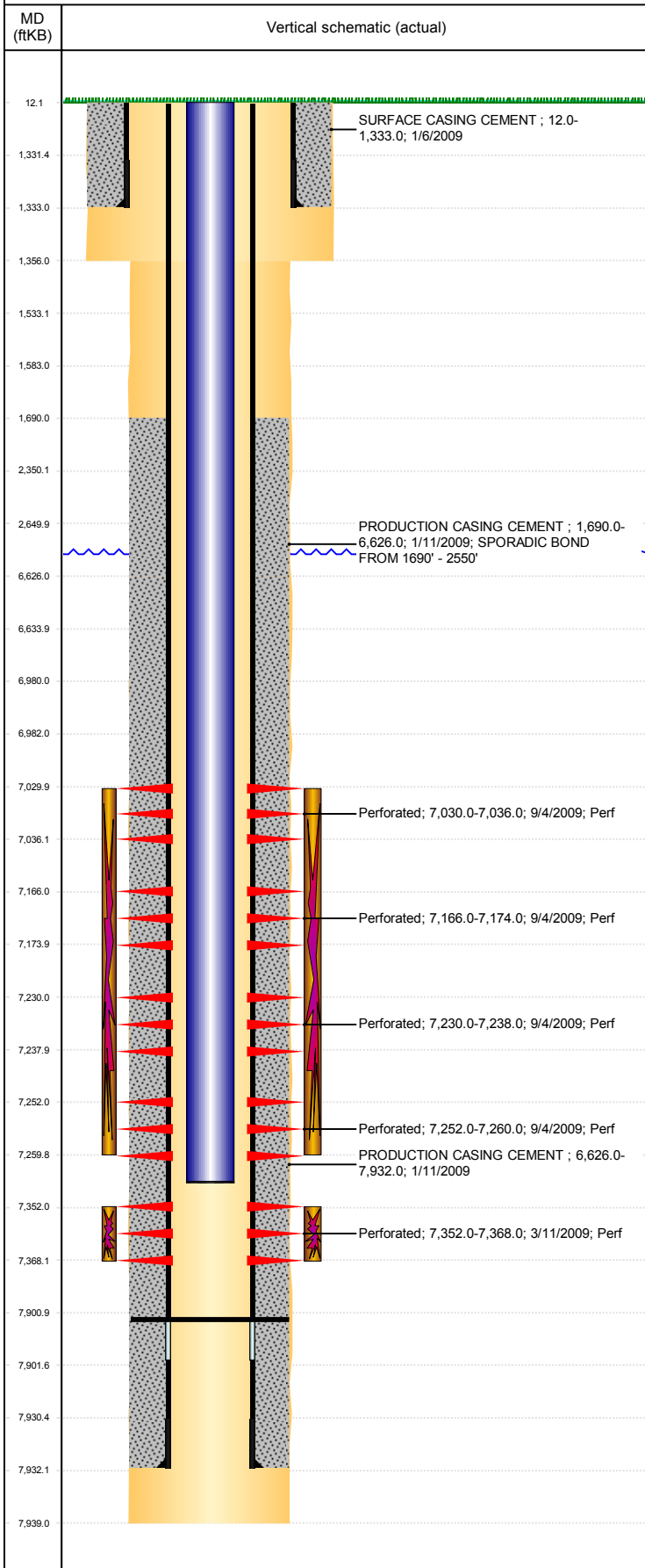


Well Name: SKYWAY 3-11

DEVIATED, ORIGINAL HOLE, 12/10/2018 11:09:23 AM



Well Header									
API 05-123-26485		Business Unit DJ BASIN			District 15		Well Config DEVIATED		
KB - GL / MSL (ft... 12.00		Spud Date 1/5/2009		P & A Date		Well Production Status PR			SoRT No
Comment WELL DATA IS SPARSE.									
Surface Location (Congressional)									
Qtr 3 NW	Qtr 4 NW	Section 11	Twonshp 5	Twonsh... N	Range 67	Rng E/... W	Actual Latitude (°) 40.41994210	Actual Longitude (°) -104.86761100	
Wellbore Sections									
Section Des			Size (in)			Act Top, MD (ftKB)		Act Btm, MD (ftKB)	
SURFACE			12 1/4			12		1,356	
PRODUCTION			7 7/8			1356		7,939	
Casing Strings									
Csg Des			Run Date		OD (in)	Wt/Len (lb/ft)	Grade	Top, MD (ftKB)	MD (ftKB)
Surface			1/6/2009		8 5/8	24.00	J-55	12.0	1,333.0
Production			1/11/2009		4 1/2	11.60	I-80	12.0	7,932.0
Cement									
Des					Start Date		Top (ftKB)		Btm (ftKB)
SURFACE CASING CEMENT					1/6/2009		12.0		1,333.0
PRODUCTION CASING CEMENT					1/11/2009		1,690.0		6,626.0
PRODUCTION CASING CEMENT					1/11/2009		6,626.0		7,932.0
Zone Statuses									
Zone Name	Status Date	Status	Fluid Type	Job				Prod Method	
NIOBRARA	5/9/2017	SI	Water	COMPLETION - ORIGINAL, 1/21/2009 00:00				Flowing	
NIOBRARA	6/29/2017	PR							
CODELL	9/14/2009	PR							
CODELL	11/27/2013	PR							
Perforation Data									
Linked Zone		Bnch/Stg	Entered Shot Total	Top (ftKB)		Btm (ftKB)		Date	
NIOBRARA, ORIGINAL HOLE		A	74	7,030.00		7,036.00		9/4/2009	
NIOBRARA, ORIGINAL HOLE		B	74	7,166.00		7,174.00		9/4/2009	
NIOBRARA, ORIGINAL HOLE		C	74	7,230.00		7,238.00		9/4/2009	
NIOBRARA, ORIGINAL HOLE		C	74	7,252.00		7,260.00		9/4/2009	
CODELL, ORIGINAL HOLE			64	7,352.00		7,368.00		3/11/2009	
Stimulation Intervals									
Zone				Start Date		Top (ftKB)		Btm (ftKB)	
NIOBRARA, ORIGINAL HOLE				9/8/2009		7,030.0		7,260.0	
CODELL, ORIGINAL HOLE				3/17/2009		7,352.0		7,368.0	
Other In Hole									
Run Date		Des				OD (in)	Top (ftKB)	Btm (ftKB)	
Logs									
Date		Type				Top, MD (ftKB)		Btm, MD (ftKB)	
1/10/2009		COMPENSATED NEUTRON				1,322.0		7,940.0	
1/10/2009		INDUCTION				1,322.0		7,940.0	
3/11/2009		CBL/CCL/GR				1,400.0		7,895.0	
5/4/2018		GYRO				12.0		7,250.0	
Plug Back Total Depths									
Date		Type		Com				Depth (ftKB)	
3/11/2009		FILL		DEPTH LOGGER FROM CBL				7,898.0	
2/18/2010		FILL		CLEAN OUT & LAND TBG				7,901.0	