

WELL LOCATION DATA:
 LATITUDE: 40.39065°N
 LONGITUDE: 104.68251°W
 ELEVATION: 4674'
 PDOP: 1.9
 OPERATOR: C HOLMES
 SURFACE USE: INDUSTRIAL

NOTES:

- DISTANCES ARE MEASURED PERPENDICULAR TO NEAREST SECTION LINE AND ARE SHOWN ON THE SAME SIDE OF THE SECTION LINE WHERE THE WELL IS LOCATED.
- THIS MAP DOES NOT REPRESENT A MONUMENTED BOUNDARY SURVEY. SIXTEENTH CORNER LOCATIONS ARE COMPUTED, UNLESS OTHERWISE NOTED.
- BOTTOM HOLE LOCATIONS AND HORIZONTAL COMPLETION ZONE PROVIDED BY OTHERS.

BASIS OF BEARING:

THE NORTH LINE OF THE NORTHEAST QUARTER OF SECTION 20-T5N-R65W BEARS N89°44'34"E BETWEEN THE NORTH QUARTER CORNER OF SECTION 20 MONUMENTED WITH 3 1/4" A.C. IN R.B STAMPED "PLS 36053" AND THE NORTHEAST CORNER OF SECTION 20 MONUMENTED WITH A 3 1/4" A.C. IN R.B STAMPED "LS 34990" BASED ON THE COLORADO NORTH 0501 STATE PLANE COORDINATE SYSTEM.

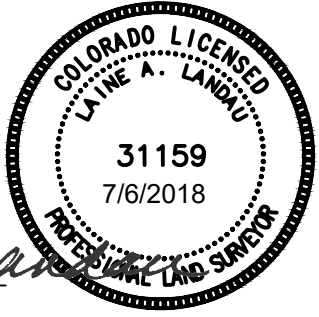
ELEVATIONS ARE BASED ON NAVD 88, AS OBSERVED FROM GPS OBSERVATIONS

LEGEND

- ALIQUOT CORNER A.C. ALUMINUM CAP
- BOTTOM HOLE R.B. RANGE BOX
- PROPOSED WELL

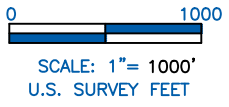
LAND SURVEYOR'S CERTIFICATION

LAMP, RYNEARSON & ASSOCIATES, INC., OF FT. COLLINS, COLORADO HAS, IN ACCORDANCE WITH A REQUEST FROM TROY OWENS AT EXTRACTION, DETERMINED THE SURFACE LOCATION OF THE WELL DESIGNATED AS GP ALLES FED 17W-25-1N TO BE 441' FROM THE NORTH LINE AND 1305' FROM THE EAST LINE OF SECTION 20, TOWNSHIP 5 NORTH, RANGE 65 WEST OF THE 6TH P.M., WELD COUNTY, COLORADO.



Laine A. Landau

LAINE A. LANDAU
 COLORADO PLS 31159
 DATE OF SURVEY: 8/19/2010 (SECTION CONTROL)
 DATE OF SURVEY: 08/23/2013 (WELL LOCATION)

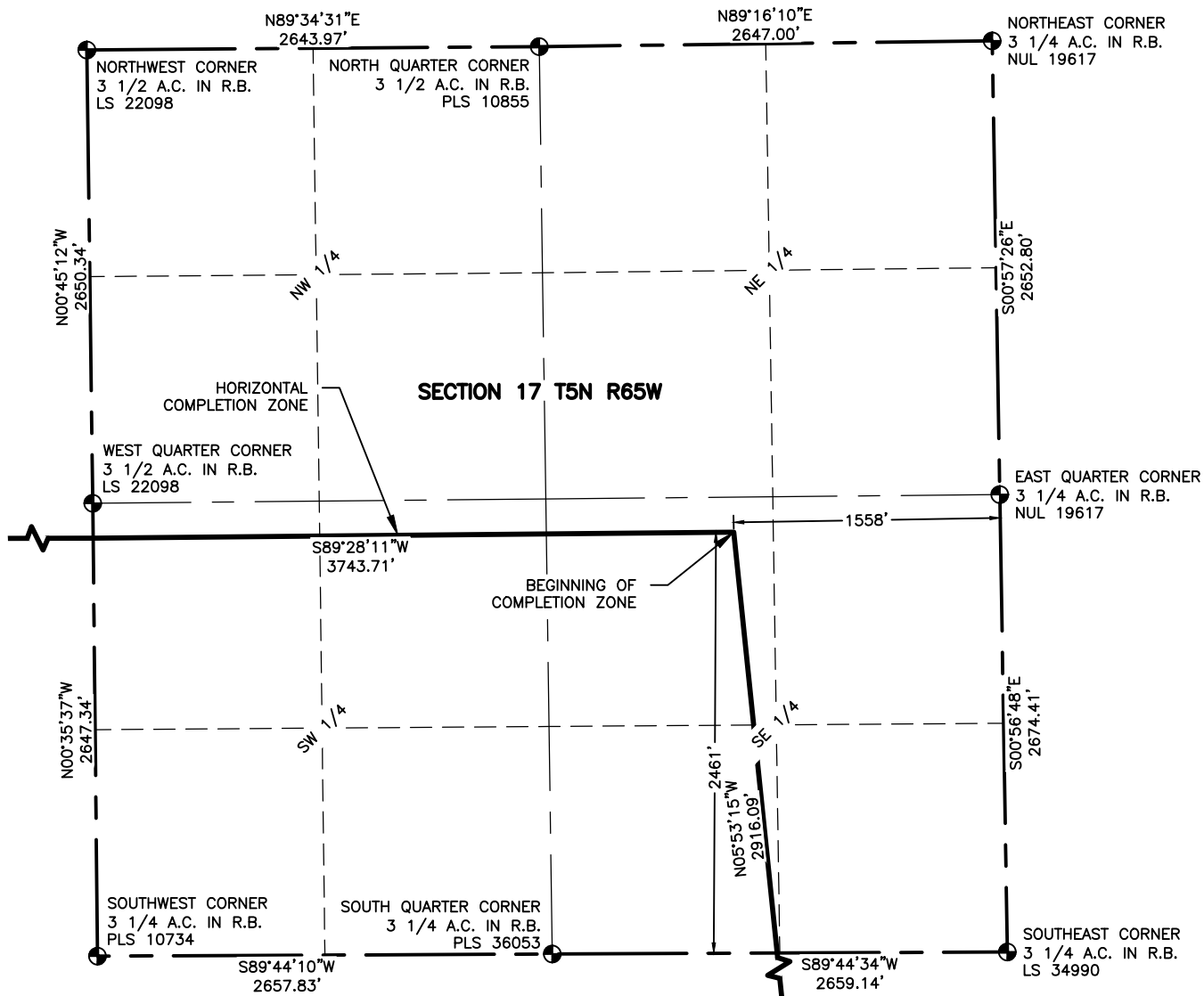


LAMP RYNEARSON & ASSOCIATES

4715 Innovation Drive 970.226.0342 | P
 Fort Collins, CO 80525 970.226.0879 | F
 www.LRA-inc.com

PROPOSED WELL LOCATION EXHIBIT
 GP ALLES FED 17W-25-1N
 1 OF 4

DRAWN BY JMC	DATE 4/9/2018	COGCC ID 332837	PROJECT - TASK NUMBER 0213001.01	BOOK AND PAGE MR01/MR02	SURFACE - LOCATION NE/4,NE/4, SEC20, T5N, R65W
PATH\FILENAME	I:\engineering\0218001.01 xog - greeley directional gp				



NOTES:

1. DISTANCES ARE MEASURED PERPENDICULAR TO NEAREST SECTION LINE AND ARE SHOWN ON THE SAME SIDE OF THE SECTION LINE WHERE THE WELL IS LOCATED.
2. THIS MAP DOES NOT REPRESENT A MONUMENTED BOUNDARY SURVEY.
3. SIXTEENTH CORNER LOCATIONS ARE COMPUTED, UNLESS OTHERWISE NOTED.

LEGEND

- ⊕ ALIQUOT CORNER
- ⊙ BOTTOM HOLE
- A.C. ALUMINUM CAP
- R.B. RANGE BOX



SCALE: 1" = 1000'
U.S. SURVEY FEET



LAMP RYNEARSON
& ASSOCIATES

4715 Innovation Drive 970.226.0342 | P
Fort Collins, CO 80525 970.226.0879 | F
www.LRA-Inc.com

PROPOSED WELL LOCATION EXHIBIT
GP ALLES FED 17W-25-1N
2 OF 4

DRAWN BY
JMC
PATH\FILENAME

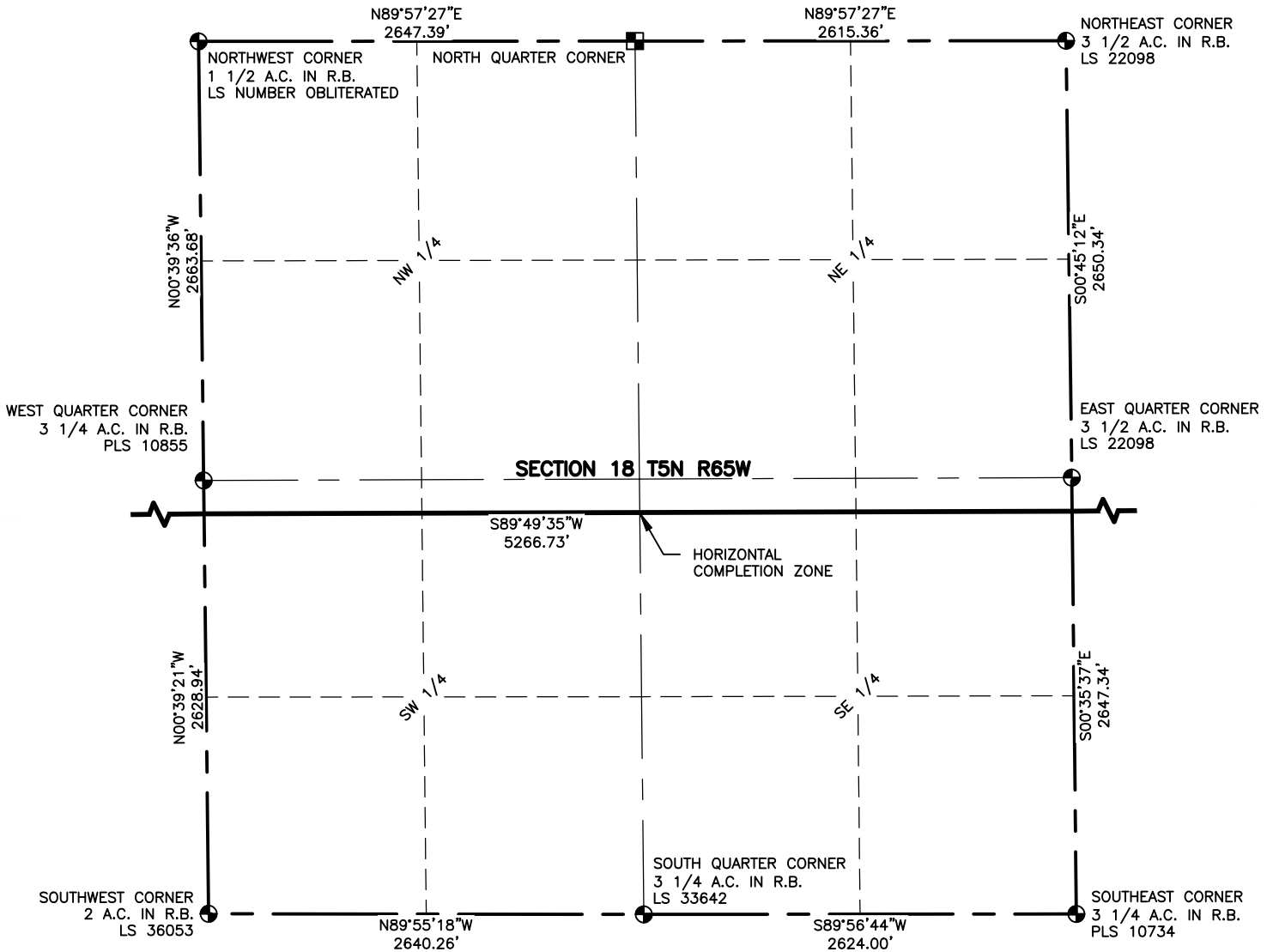
DATE
4/9/2018

COGCC ID
332837

PROJECT - TASK NUMBER
0213001.01
L:\Engineering\0218001.01 XOG - Greeley Directional GP

BOOK AND PAGE
MR01/MR02

SURFACE - LOCATION
NE/4,NE/4, SEC20, T5N, R65W

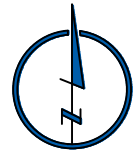


NOTES:

1. DISTANCES ARE MEASURED PERPENDICULAR TO NEAREST SECTION LINE AND ARE SHOWN ON THE SAME SIDE OF THE SECTION LINE WHERE THE WELL IS LOCATED.
2. THIS MAP DOES NOT REPRESENT A MONUMENTED BOUNDARY SURVEY.
3. SIXTEENTH CORNER LOCATIONS ARE COMPUTED, UNLESS OTHERWISE NOTED.

LEGEND

- ALIQUOT CORNER
- ⊙ BOTTOM HOLE
- COMPUTED ALIQUOT CORNER FROM GLO RECORDS
- A.C. ALUMINUM CAP
- R.B. RANGE BOX



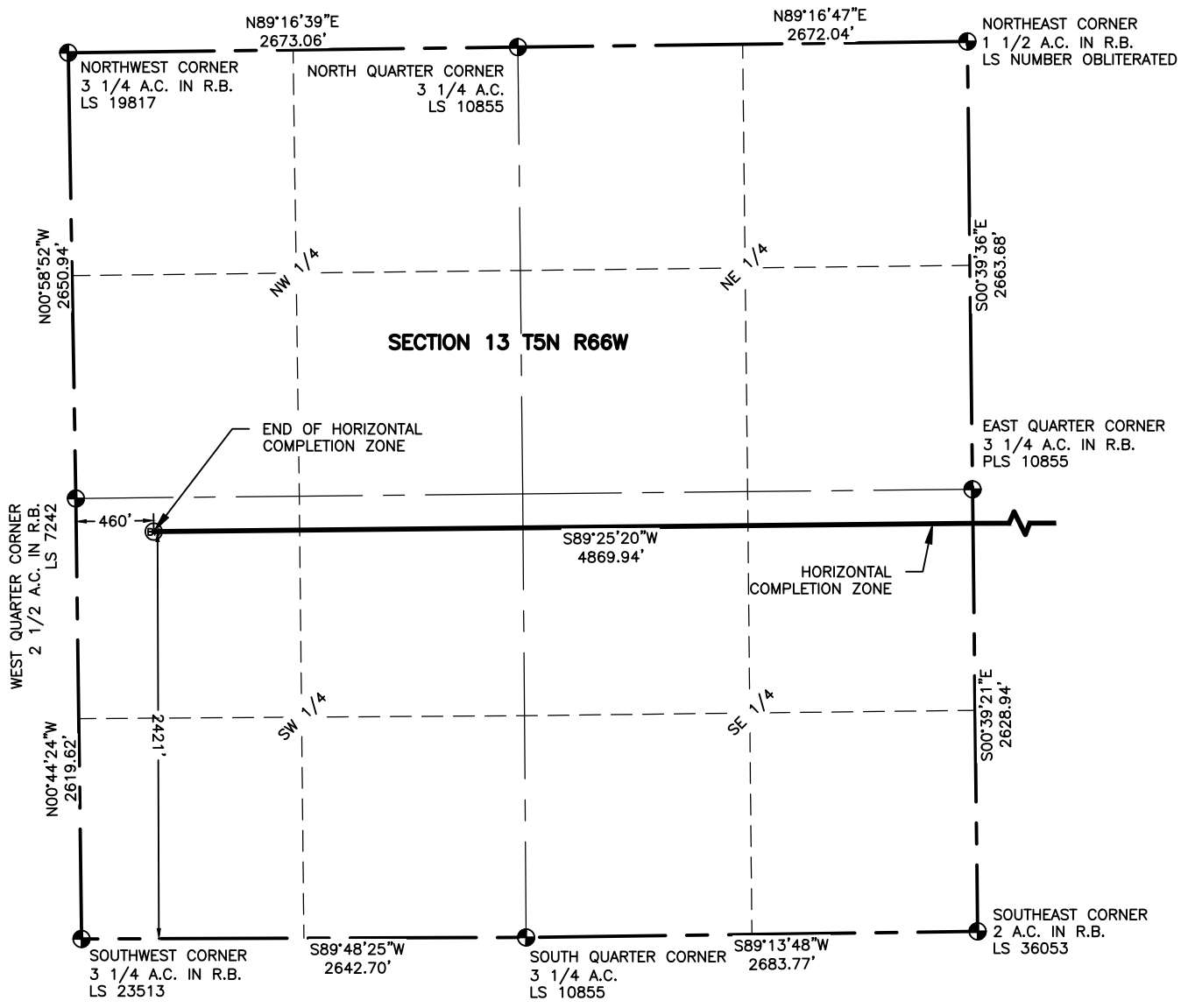
SCALE: 1" = 1000'
U.S. SURVEY FEET



4715 Innovation Drive 970.226.0342 | P
 Fort Collins, CO 80525 970.226.0879 | F
 www.LRA-inc.com

PROPOSED WELL LOCATION EXHIBIT
 GP ALLES FED 17W-25-1N
 3 OF 4

DRAWN BY	DATE	COGCC ID	PROJECT - TASK NUMBER	BOOK AND PAGE	SURFACE - LOCATION
JMC	4/9/2018	332837	0213001.01	MR01/MR02	NE/4,NE/4, SEC20, T5N, R65W
PATH\FILENAME	I:\engineering\0218001.01 xog - greely directional gp				



4715 Innovation Drive 970.226.0342 | P
 Fort Collins, CO 80525 970.226.0879 | F
 www.LRA-Inc.com

PROPOSED WELL LOCATION EXHIBIT
 GP ALLES FED 17W-25-1N
 4 OF 4

DRAWN BY	DATE	COGCC ID	PROJECT - TASK NUMBER	BOOK AND PAGE	SURFACE - LOCATION
JMC	4/9/2018	332837	0213001.01	MR01/MR02	NE/4,NE/4, SEC20, T5N, R65W
PATH\FILENAME	I:\engineering\0218001.01 xog - greeley directional gp				