

**NORTHEAST CORNER**  
 3 1/4 A.C. IN R.B.  
 LS 34990

**WELL LOCATION DATA:**  
 LATITUDE: 40.39062°N  
 LONGITUDE: 104.68251°W  
 ELEVATION: 4674'  
 PDOP: 1.9  
 OPERATOR: C HOLMES  
 SURFACE USE: INDUSTRIAL

**SECTION 20 T5N R65W**

**NOTES:**

- DISTANCES ARE MEASURED PERPENDICULAR TO NEAREST SECTION LINE AND ARE SHOWN ON THE SAME SIDE OF THE SECTION LINE WHERE THE WELL IS LOCATED.
- THIS MAP DOES NOT REPRESENT A MONUMENTED BOUNDARY SURVEY. SIXTEENTH CORNER LOCATIONS ARE COMPUTED, UNLESS OTHERWISE NOTED.
- BOTTOM HOLE LOCATIONS AND HORIZONTAL COMPLETION ZONE PROVIDED BY OTHERS.

**BASIS OF BEARING:**

THE NORTH LINE OF THE NORTHEAST QUARTER OF SECTION 20-T5N-R65W BEARS N89°44'34"E BETWEEN THE NORTH QUARTER CORNER OF SECTION 20 MONUMENTED WITH 3 1/4" A.C. IN R.B STAMPED "PLS 36053" AND THE NORTHEAST CORNER OF SECTION 20 MONUMENTED WITH A 3 1/4" A.C. IN R.B STAMPED "LS 34990" BASED ON THE COLORADO NORTH 0501 STATE PLANE COORDINATE SYSTEM.

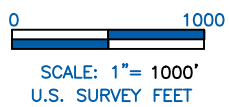
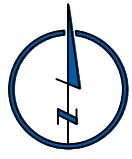
ELEVATIONS ARE BASED ON NAVD 88, AS OBSERVED FROM GPS OBSERVATIONS

**LEGEND**

- ALIQUOT CORNER    A.C. ALUMINUM CAP
- BOTTOM HOLE        R.B. RANGE BOX
- PROPOSED WELL

**LAND SURVEYOR'S CERTIFICATION**

LAMP, RYNEARSON & ASSOCIATES, INC., OF FT. COLLINS, COLORADO HAS, IN ACCORDANCE WITH A REQUEST FROM TROY OWENS AT EXTRACTION, DETERMINED THE SURFACE LOCATION OF THE WELL DESIGNATED AS GP ALLES FED 17W-25-2N TO BE 453' FROM THE NORTH LINE AND 1305' FROM THE EAST LINE OF SECTION 20, TOWNSHIP 5 NORTH, RANGE 65 WEST OF THE 6TH P.M., WELD COUNTY, COLORADO.



*Laine A. Landau*

LAINE A. LANDAU  
 COLORADO PLS 31159  
 DATE OF SURVEY: 8/19/2010 (SECTION CONTROL)  
 DATE OF SURVEY: 7/31/2014 (WELL LOCATION)

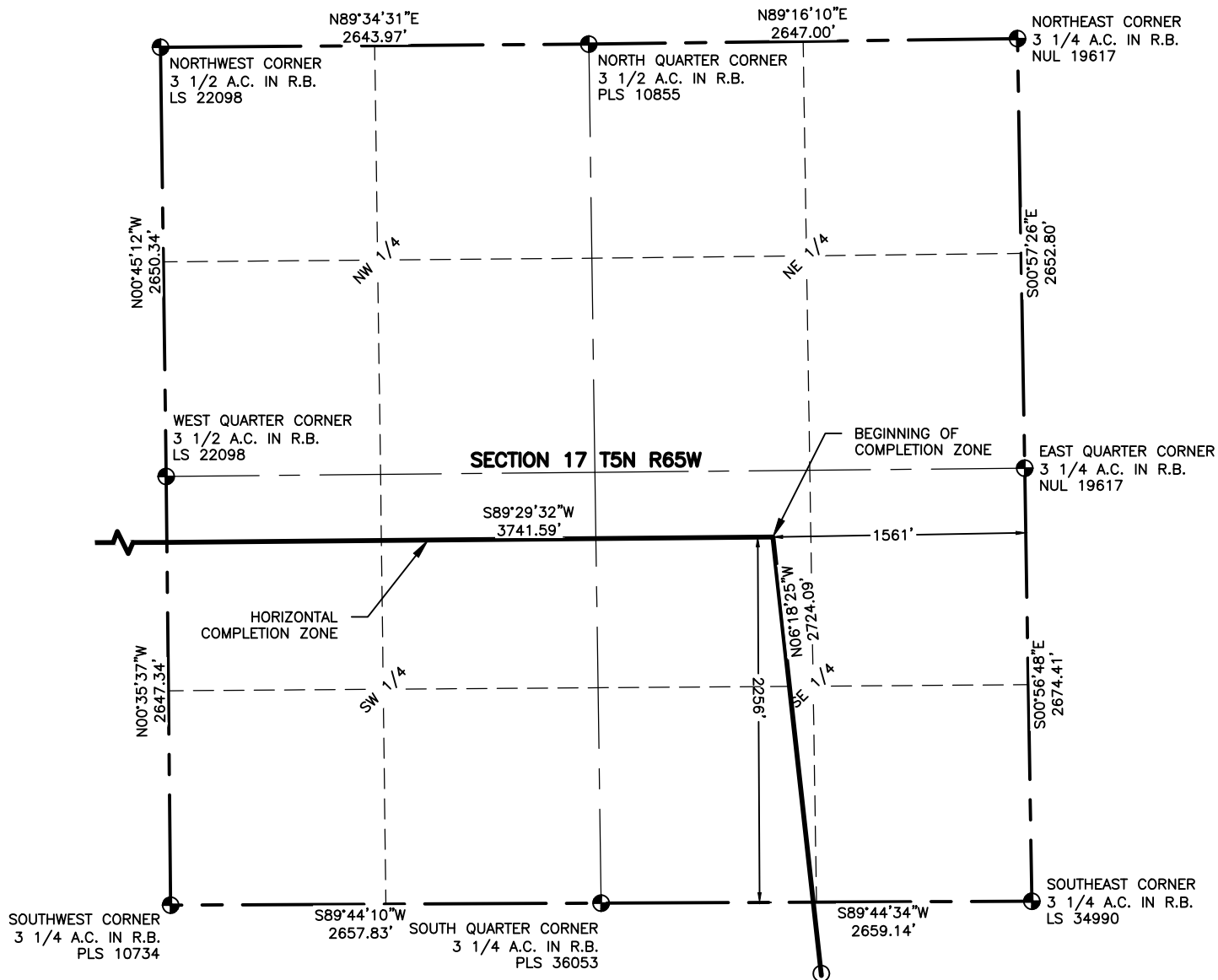


**LAMP RYNEARSON & ASSOCIATES**

4715 Innovation Drive 970.226.0342 | P  
 Fort Collins, CO 80525 970.226.0879 | F  
 www.LRA-inc.com

PROPOSED WELL LOCATION EXHIBIT  
 GP ALLES FED 17W-25-2N  
 1 OF 4

<b>DRAWN BY</b> JMC	<b>DATE</b> 4/9/2018	<b>COGCC ID</b> 332837	<b>PROJECT - TASK NUMBER</b> 0213001.01	<b>BOOK AND PAGE</b> MR01/MR02	<b>SURFACE - LOCATION</b> NE/4,NE/4, SEC20, T5N, R65W
<b>PATH\FILENAME</b> I:\SURVEY\DRAWINGS\EXHIBITS\0213001_01\FYWR011.dwg					



**NOTES:**

1. DISTANCES ARE MEASURED PERPENDICULAR TO NEAREST SECTION LINE AND ARE SHOWN ON THE SAME SIDE OF THE SECTION LINE WHERE THE WELL IS LOCATED.
2. THIS MAP DOES NOT REPRESENT A MONUMENTED BOUNDARY SURVEY.
3. SIXTEENTH CORNER LOCATIONS ARE COMPUTED, UNLESS OTHERWISE NOTED.

**LEGEND**

- ⊕ ALIQUOT CORNER
- ⊙ BOTTOM HOLE
- A.C. ALUMINUM CAP
- R.B. RANGE BOX



SCALE: 1" = 1000'  
U.S. SURVEY FEET



**LAMP RYNEARSON**  
& ASSOCIATES

4715 Innovation Drive 970.226.0342 | P  
Fort Collins, CO 80525 970.226.0879 | F  
www.LRA-inc.com

PROPOSED WELL LOCATION EXHIBIT  
GP ALLES FED 17W-25-2N  
2 OF 4

DRAWN BY  
JMC  
PATH\FILENAME

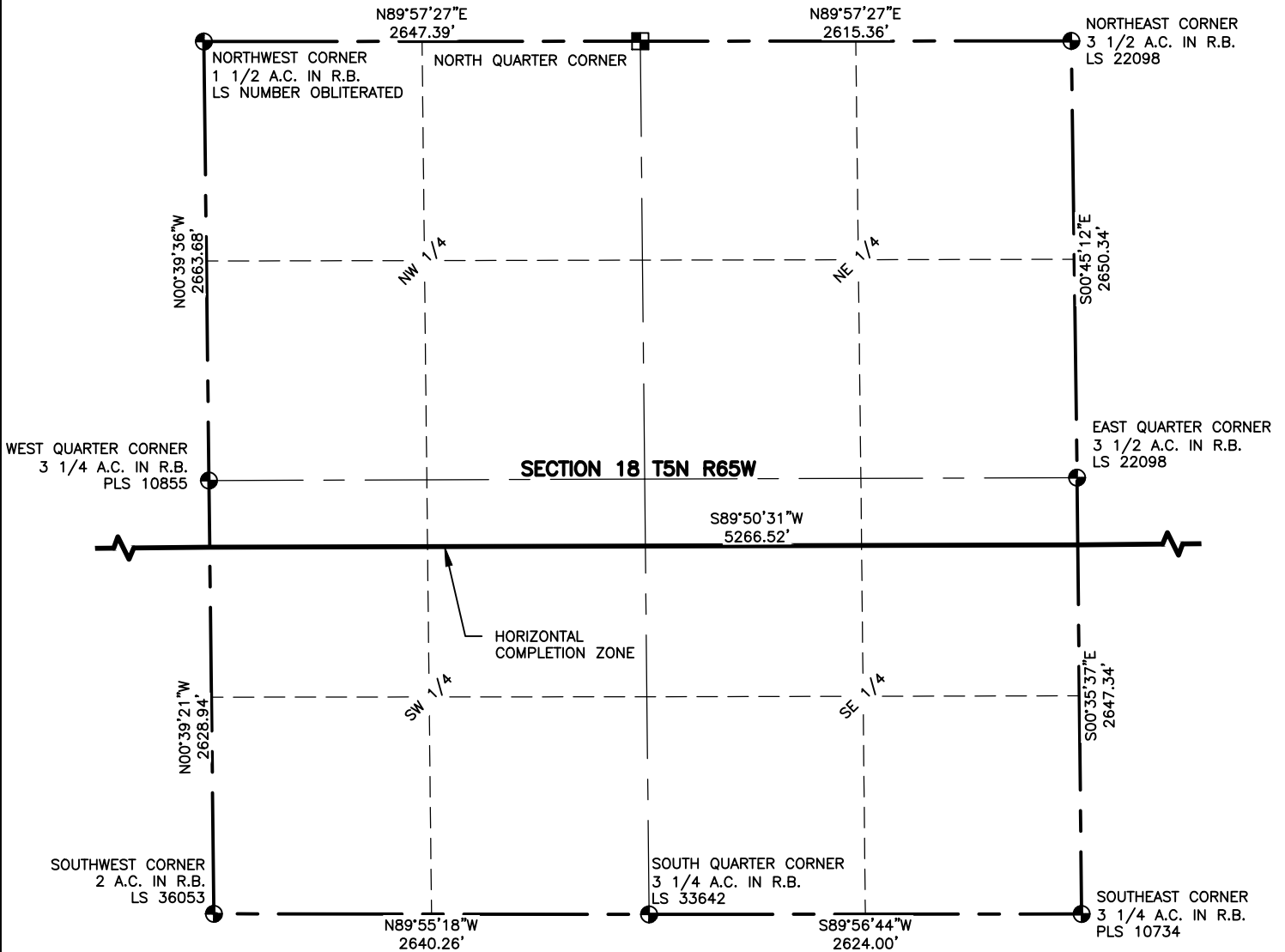
DATE  
4/9/2018

COGCC ID  
332837

PROJECT - TASK NUMBER  
0213001.01  
I:\engineering\0218001.01 xog - greeley directional gp

BOOK AND PAGE  
MR01/MR02

SURFACE - LOCATION  
NE/4, NE/4, SEC20, T5N, R65W

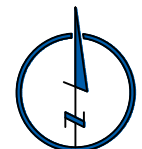


**NOTES:**

1. DISTANCES ARE MEASURED PERPENDICULAR TO NEAREST SECTION LINE AND ARE SHOWN ON THE SAME SIDE OF THE SECTION LINE WHERE THE WELL IS LOCATED.
2. THIS MAP DOES NOT REPRESENT A MONUMENTED BOUNDARY SURVEY.
3. SIXTEENTH CORNER LOCATIONS ARE COMPUTED, UNLESS OTHERWISE NOTED.

**LEGEND**

- ALIQUOT CORNER
- ⊙ BOTTOM HOLE
- ⊠ COMPUTED ALIQUOT CORNER FROM GLO RECORDS
- A.C. ALUMINUM CAP
- R.B. RANGE BOX



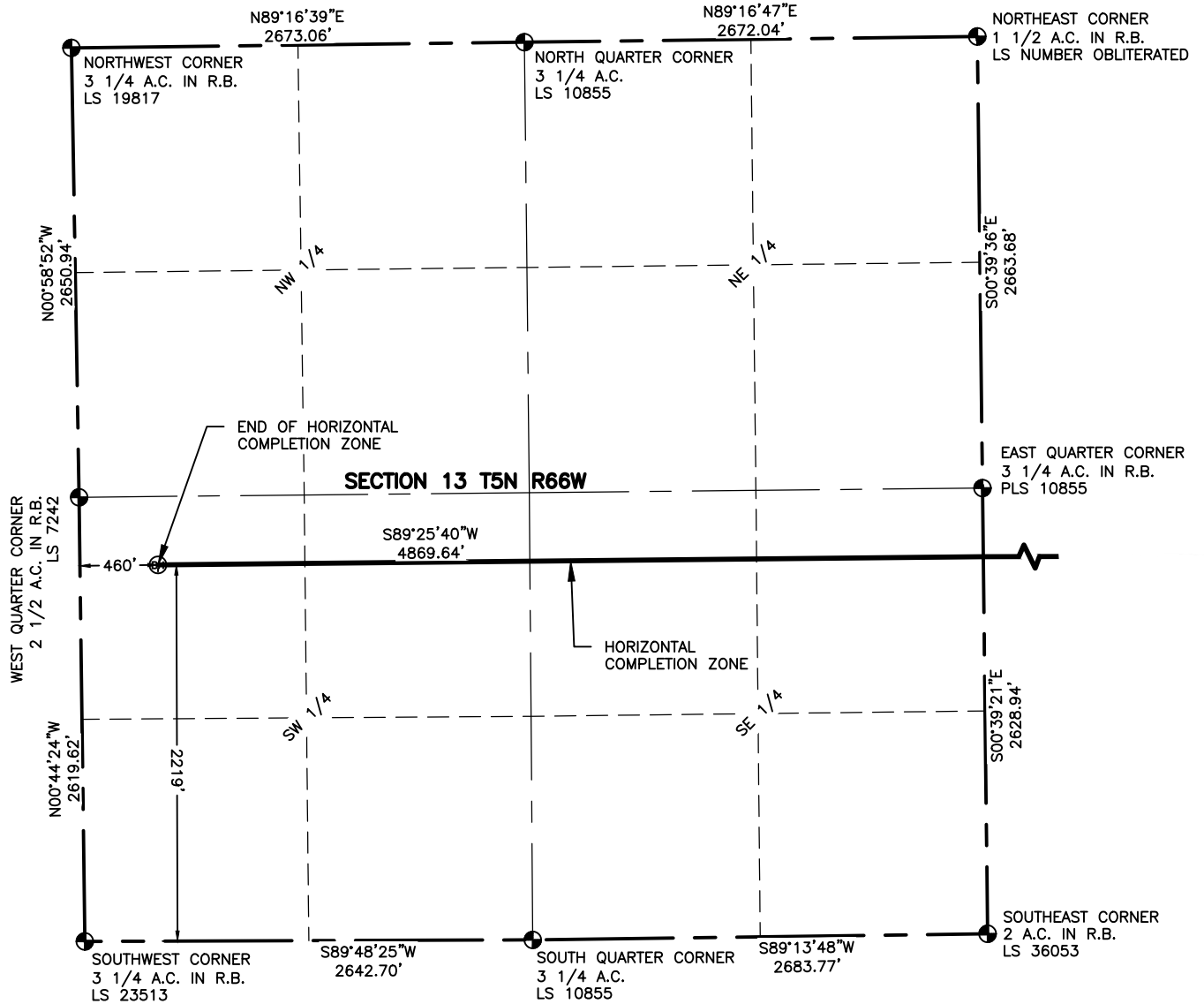
SCALE: 1" = 1000'  
U.S. SURVEY FEET



4715 Innovation Drive 970.226.0342 | P  
Fort Collins, CO 80525 970.226.0879 | F  
www.LRA-Inc.com

PROPOSED WELL LOCATION EXHIBIT  
GP ALLES FED 17W-25-2N  
3 OF 4

DRAWN BY	DATE	COGCC ID	PROJECT - TASK NUMBER	BOOK AND PAGE	SURFACE - LOCATION
JMC	4/9/2018	332837	0213001.01	MR01/MR02	NE/4,NE/4, SEC20, T5N, R65W
PATH\FILENAME	I:\engineering\0218001.01 xog - greeley directional gp				



**NOTES:**

1. DISTANCES ARE MEASURED PERPENDICULAR TO NEAREST SECTION LINE AND ARE SHOWN ON THE SAME SIDE OF THE SECTION LINE WHERE THE WELL IS LOCATED.
2. THIS MAP DOES NOT REPRESENT A MONUMENTED BOUNDARY SURVEY. SIXTEENTH CORNER LOCATIONS ARE COMPUTED, UNLESS OTHERWISE NOTED.
3. BOTTOM HOLE LOCATIONS AND HORIZONTAL COMPLETION ZONE PROVIDED BY OTHERS.

**LEGEND**

- ⊕ ALIQUOT CORNER
- ⊙ BOTTOM HOLE
- A.C. ALUMINUM CAP
- R.B. RANGE BOX



SCALE: 1"= 1000'  
U.S. SURVEY FEET



4715 Innovation Drive 970.226.0342 | P  
 Fort Collins, CO 80525 970.226.0879 | F  
 www.LRA-Inc.com

PROPOSED WELL LOCATION EXHIBIT  
 GP ALLES FED 17W-25-2N  
 4 OF 4

DRAWN BY	DATE	COGCC ID	PROJECT - TASK NUMBER	BOOK AND PAGE	SURFACE - LOCATION
JMC	4/9/2018	332837	0213001.01	MR01/MR02	NE/4,NE/4, SEC20, T5N, R65W
PATH\FILENAME	I:\engineering\0218001.01 xog - greely directional gp				