



November 14, 2018

Ms. Julie Murphy, Director
Colorado Oil & Gas Conservation Commission
1120 Lincoln Street, Ste. 801
Denver, Colorado 80203

RE: Rule 318.A.e.

GP Hillside FED 17W-20-11N, GP Hillside FED 17W-20-12N, GP Hillside FED 20W-20-13N, GP Hillside FED 20W-20-14C, GP Hillside FED 20W-20-15N
NENE Section 20, Township 5N, Range 65W, Weld County, CO

Dear Ms. Murphy,

Extraction Oil and Gas, Inc. (Extraction) is planning to drill the captioned horizontal wells in accordance with the provision of COGCC Rule 318A.e.

The wellbore spacing unit will be 800 acres, comprised of Section 17: S/2S/2, Section 18: S/2S/2, Section 19: N/2N/2, Section 20: N/2N/2 Township 5 North, Range 65 West, 6th P.M.; Section 13: S/2SE/4, Section 24: N/2NE/4 Township 5 North, Range 66 West, 6th P.M. The subject wells are planned to drill and test the viability of the Niobrara and Codell formations. The wellbore spacing unit is depicted on the enclosed spacing unit exhibit.

Extraction hereby certifies to the Director that all Owners within the proposed spacing unit above were notified and 30 days have passed without objection.

Sincerely,

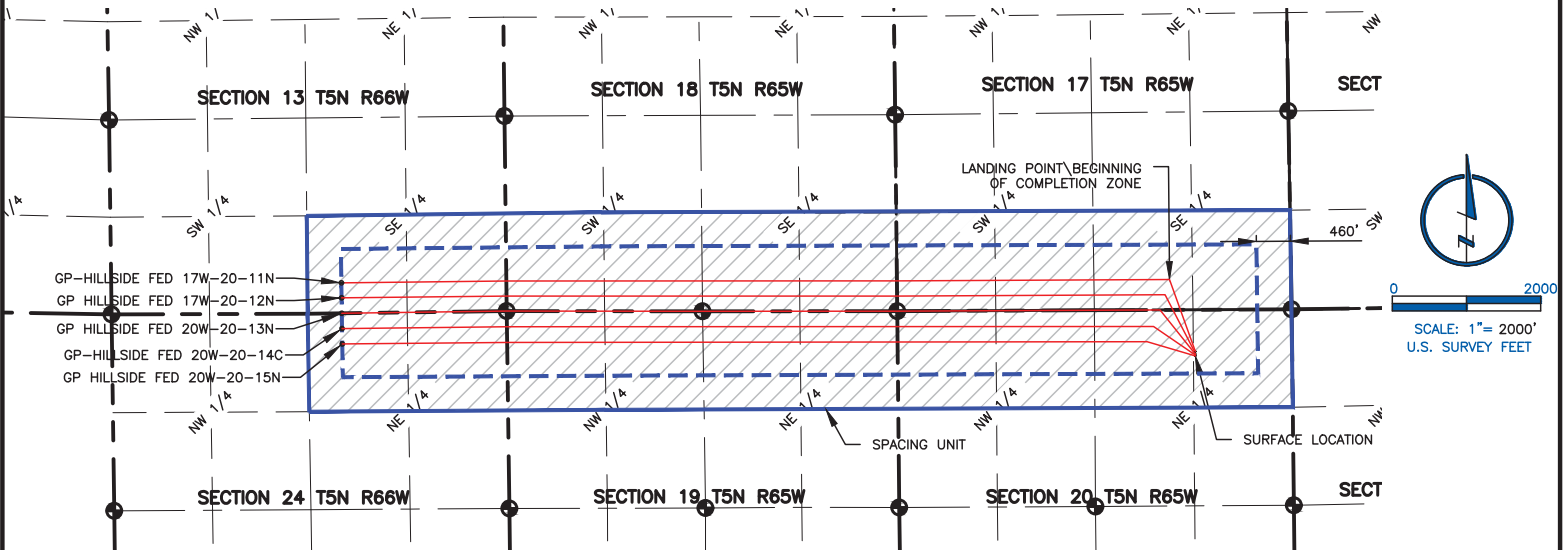
A handwritten signature in blue ink, appearing to read "B. Lamond".

Bonnie Lamond
Extraction Oil & Gas, Inc.

NAME: HILLSIDE

**SPACING UNIT: SEC 13: S/2SE/4; SEC 24: N/2NE/4, T5N, 66W; SEC 18: S/2S/2; SEC 19: N/2N/2; SEC 17: S/2S/2; SEC 20: N/2N/2 T5N, R65W
UNIT ACREAGE: 800**

WELL NAME	SURFACE LOCATION				LANDING POINT\BEGIN HORIZONTAL COMPLETION ZONE				BOTTOM HOLE\END HORIZONTAL COMPLETION ZONE				COMPLETION ZONE BEARING	COMPLETION ZONE LENGTH
	DIST.	DIR.	DIST.	DIR.	DIST.	DIR.	DIST.	DIR.	DIST.	DIR.	DIST.	DIR.		
GP HILLSIDE FED 17W-20-11N	562'	FNL	1305'	FEL	410'	FSL	1640'	FEL	410'	FSL	2224'	FEL	S89°22'57"W, S89°58'52"W S89°41'35"W	2223.00', 5265.56', 3674.41'
GP HILLSIDE FED 17W-20-12N	586'	FNL	1305'	FEL	205'	FSL	1703'	FEL	209'	FSL	2223'	FEL	S89°23'41"W, S89°59'48"W S89°43'16"W	2222.99', 5264.46', 3612.93'
GP HILLSIDE FED 20W-20-13N	598'	FNL	1305'	FEL	0'	FNL	3542'	FWL	0'	FNL	2224'	FEL	S89°13'48"W, S89°55'18"W S89°43'16"W	2223.77', 2640.26', 3542.14'
GP HILLSIDE FED 20W-20-14C	610'	FNL	1305'	FEL	222'	FNL	1863'	FEL	207'	FNL	2223'	FEL	S89°21'22"W, S89°58'28"W	2223.12', 8717.64'
GP HILLSIDE FED 20W-20-15N	622'	FNL	1305'	FEL	428'	FNL	1954'	FEL	413'	FNL	2222'	FEL	S89°28'57"W, S89°56'11"W	2222.47', 8626.53'



LAMP RYNEARSON & ASSOCIATES

4715 Innovation Drive 970.226.0342 | P
Fort Collins, CO 80525 970.226.0879 | F
www.LRA-Inc.com

PLANNED SPACING UNIT EXHIBIT
GREELEY DIRECTIONAL
HILLSIDE SPACING UNIT

LEGEND

●	ALIQUOT CORNER	△	COMPUTED ALIQUOT CORNER FROM MONUMENT RECORDS
⊙	BOTTOM HOLE	□	COMPUTED FROM GLO RECORDS
◆	COMPUTED ALIQUOT CORNER		
—	SECTION LINE		
- - -	QUARTER SECTION LINE		
- - -	SIXTEENTH LINE		

DRAWN BY
JMC
PATH\FILENAME

DATE
4/9/2018

COGCC ID
332837

PROJECT - TASK NUMBER
0213001.01
Greeley Directional GP

BOOK AND PAGE
MR01/MR02

SURFACE - LOCATION
NE/4,NE/4, SEC20, T5N, R65W

C:\Engineering\0218001.01 X00 - Greeley Directional GP

SPACING UNIT EXHIBIT Planned Spacing Unit\0213001_01R65W_6.dwg