

# BONANZA CREEK OIL COMPANY

Location: COLORADO Slot: SLOT#27 STATE ANTELOPE 34-32-29XRLNC (584'FNL & 2591'FWL,SEC.05)  
 Field: WELD COUNTY Well: STATE ANTELOPE 34-32-29XRLNC  
 Facility: SEC.05-T04N-R62W Wellbore: STATE ANTELOPE 34-32-29XRLNC PWB

Plot reference wellpath is STATE ANTELOPE 34-32-29XRLNC PWB (REV-A.0)		Grid System: NAD83 / Lambert Colorado SP, Northern Zone (501), US feet
True vertical depths are referenced to RIG (17) (RKB)		North Reference: True north
Measured depths are referenced to RIG (17) (RKB)		Scale: True distance
RIG (17) (RKB) to Mean Sea Level: 4552 feet		Depths are in feet
Mean Sea Level to Ground level (At Slot: SLOT#27 STATE ANTELOPE 34-32-29XRLNC (584'FNL & 2591'FWL,SEC.05)): 0 feet		Created by: robale01 on 2018-10-11
Coordinates are in feet referenced to Slot		Database: WADENVER

## Location Information

Facility Name				Grid East (US ft)	Grid North (US ft)	Latitude	Longitude
SEC.05-T04N-R62W				3322559.236	1367149.704	40°20'07.620"N	104°20'34.476"W
Slot	Local N (ft)	Local E (ft)		Grid East (US ft)	Grid North (US ft)	Latitude	Longitude
SLOT#27 STATE ANTELOPE 34-32-29XRLNC (584'FNL & 2591'FWL,SEC.05)	4351.84	-2121.81		3320380.914	1371473.395	40°20'50.624"N	104°21'01.880"W
RIG (17) (RKB) to Ground level (At Slot: SLOT#27 STATE ANTELOPE 34-32-29XRLNC (584'FNL & 2591'FWL,SEC.05))							4552ft
Mean Sea Level to Ground level (At Slot: SLOT#27 STATE ANTELOPE 34-32-29XRLNC (584'FNL & 2591'FWL,SEC.05))							0ft
RIG (17) (RKB) to Mean Sea Level							4552ft

## Survey Program

Start MD (ft)	End MD (ft)	Tool	Model	Log Name/Comment	Wellbore
17.00	1450.00	BHI NavTrak	BHI NavTrak (Rotating+Axial Corr)		STATE ANTELOPE 34-32-29XRLNC PWB
1450.00	16530.00	BHI AutoTrak Curve	BHI AutoTrak Curve (Axial Corr, Short spacing)		STATE ANTELOPE 34-32-29XRLNC PWB

## Hole and Casing Sections

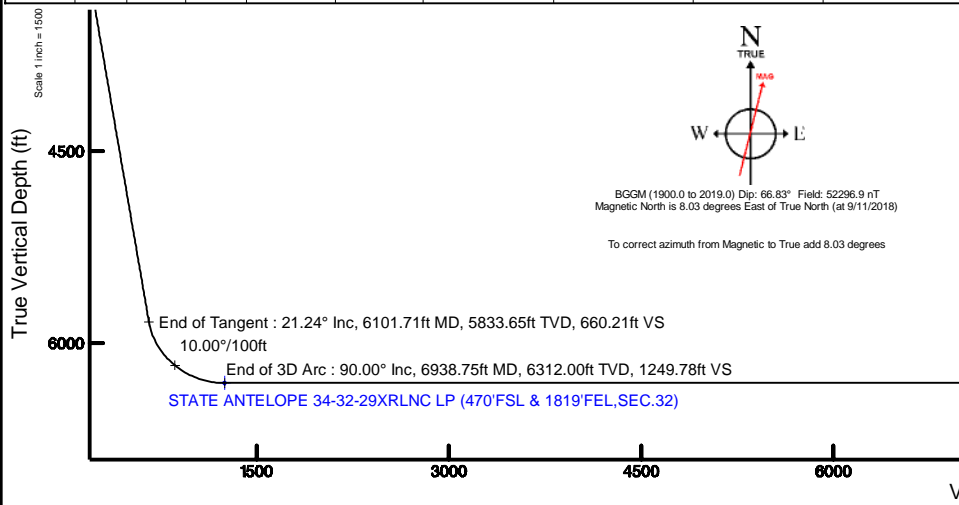
Name	Start MD (ft)	End MD (ft)	Interval (ft)	Start TVD (ft)	End TVD (ft)	Start Local N (ft)	Start Local E (ft)	End Local N (ft)	End Local E (ft)	Wellbore
9.625in Casing Surface	17.00	1450.00	1433.00	17.00	1450.00	0.00	0.00	0.00	0.00	STATE ANTELOPE 34-32-29XRLNC PWB
8.5in Open Hole	1450.00	16530.00	15080.00	1450.00	6312.00	0.00	0.00	10635.38	1448.50	STATE ANTELOPE 34-32-29XRLNC PWB

## Well Profile Data

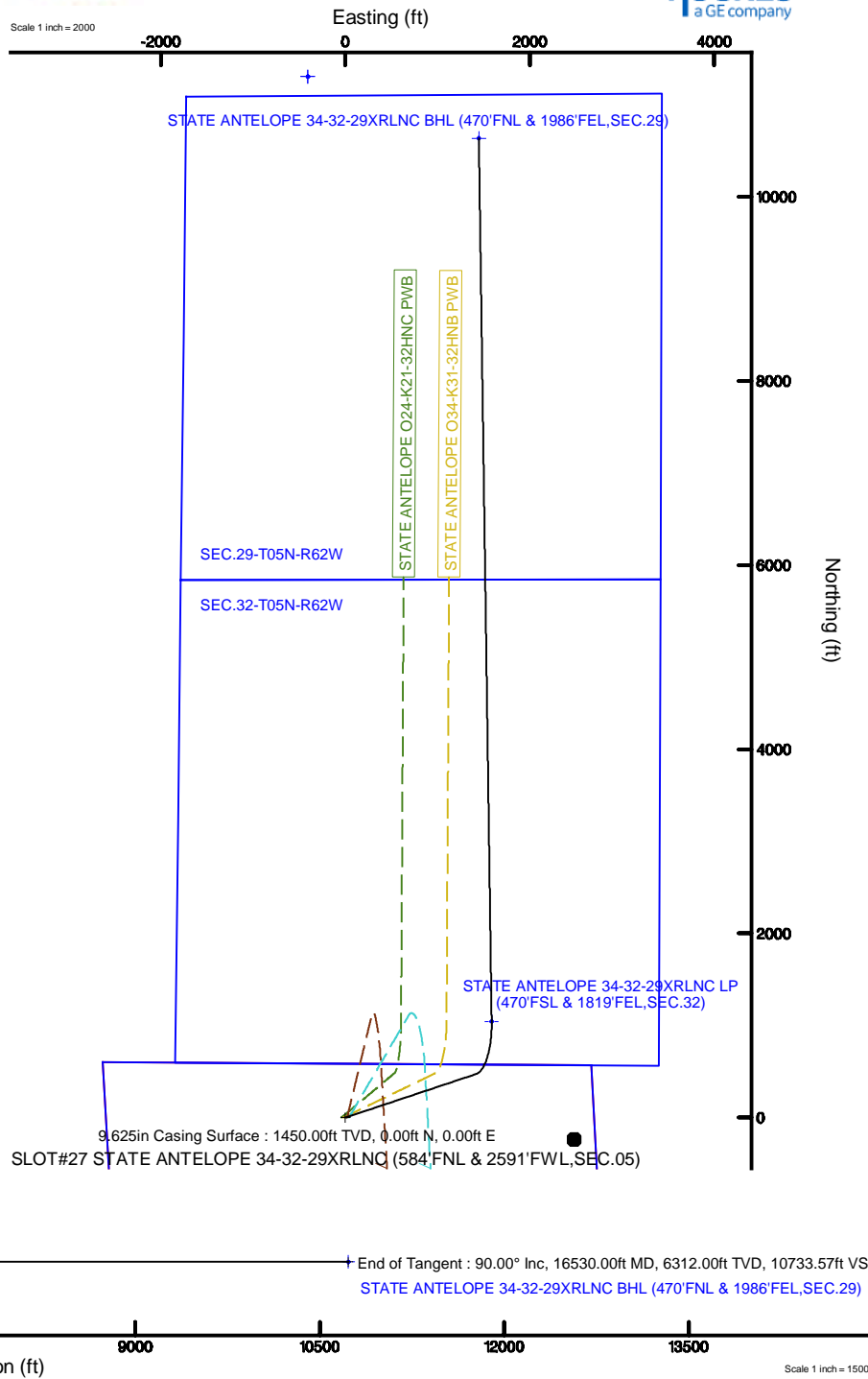
Design Comment	MD (ft)	Inc (°)	Az (°)	TVD (ft)	Local N (ft)	Local E (ft)	DLS (°/100ft)	VS (ft)
Tie On	17.00	0.000	71.553	17.00	0.00	0.00	0.00	0.00
End of Tangent	1450.00	0.000	71.553	1450.00	0.00	0.00	0.00	0.00
End of Build	2512.12	21.242	71.553	2487.96	61.59	184.64	2.00	85.95
End of Tangent	6101.71	21.242	71.553	5833.65	473.12	1418.38	0.00	660.21
End of 3D Arc	6938.75	90.000	359.171	6312.00	1045.13	1587.34	10.00	1249.78
End of Tangent	16530.00	90.000	359.171	6312.00	10635.38	1448.50	0.00	10733.57

## Bottom Hole Location

MD (ft)	Inc (°)	Az (°)	TVD (ft)	Local N (ft)	Local E (ft)	Grid East (US ft)	Grid North (US ft)	Latitude	Longitude
16530.00	90.000	359.171	6312.00	10635.38	1448.50	3321691.37	1382126.19	40°22'35.719"N	104°20'43.164"W



Scale 1 inch = 2000





# Planned Wellpath Report

STATE ANTELOPE 34-32-29XRLNC PWP (REV-A.0)  
Page 1 of 6



## REFERENCE WELLPATH IDENTIFICATION

Operator	BONANZA CREEK OIL COMPANY	Slot	SLOT#27 STATE ANTELOPE 34-32-29XRLNC (584'FNL & 2591'FWL,SEC.05)
Area	COLORADO	Well	STATE ANTELOPE 34-32-29XRLNC
Field	WELD COUNTY	Wellbore	STATE ANTELOPE 34-32-29XRLNC PWB
Facility	SEC.05-T04N-R62W		

## REPORT SETUP INFORMATION

Projection System	NAD83 / Lambert Colorado SP, Northern Zone (501), US feet	Software System	WellArchitect® 5.1
North Reference	True	User	Robiale01
Scale	0.999958	Report Generated	10/11/2018 at 3:22:02 PM
Convergence at slot	0.74° East	Database/Source file	WA DENVER/STATE ANTELOPE 34-32-29XRLNC PWP REV-A.0 .xml

## WELLPATH LOCATION

	Local coordinates		Grid coordinates		Geographic coordinates	
	North[ft]	East[ft]	Easting[US ft]	Northing[US ft]	Latitude	Longitude
Slot Location	4351.94	-2121.81	3320380.91	1371473.40	40°20'50.624"N	104°21'01.880"W
Facility Reference Pt			3322559.24	1367149.70	40°20'07.620"N	104°20'34.476"W
Field Reference Pt			3224525.77	1254425.87	40°01'44.400"N	104°41'53.556"W

## WELLPATH DATUM

Calculation method	Minimum curvature	RIG (17') (RKB) to Facility Vertical Datum	4552.00ft
Horizontal Reference Pt	Slot	RIG (17') (RKB) to Mean Sea Level	4552.00ft
Vertical Reference Pt	RIG (17') (RKB)	RIG (17') (RKB) to Ground Level at Slot (SLOT#27 STATE ANTELOPE 34-32-29XRLNC (584'FNL & 2591'FWL,SEC.05))	4552.00ft
MD Reference Pt	RIG (17') (RKB)	Section Origin	N 0.00, E 0.00 ft
Field Vertical Reference	Mean Sea Level	Section Azimuth	7.76°



# Planned Wellpath Report

STATE ANTELOPE 34-32-29XRLNC PWP (REV-A.0)  
Page 2 of 6



REFERENCE WELLPATH IDENTIFICATION			
Operator	BONANZA CREEK OIL COMPANY	Slot	SLOT#27 STATE ANTELOPE 34-32-29XRLNC (584'FNL & 2591'FWL,SEC.05)
Area	COLORADO	Well	STATE ANTELOPE 34-32-29XRLNC
Field	WELD COUNTY	Wellbore	STATE ANTELOPE 34-32-29XRLNC PWB
Facility	SEC.05-T04N-R62W		

WELLPATH DATA (172 stations) † = interpolated/extrapolated station										
MD [ft]	Inclination [°]	Azimuth [°]	TVD [ft]	Vert Sect [ft]	North [ft]	East [ft]	DLS [°/100ft]	Comments		
0.00†	0.000	71.553	0.00	0.00	0.00	0.00	0.00			
17.00	0.000	71.553	17.00	0.00	0.00	0.00	0.00			Tie On
117.00†	0.000	71.553	117.00	0.00	0.00	0.00	0.00			
217.00†	0.000	71.553	217.00	0.00	0.00	0.00	0.00			
317.00†	0.000	71.553	317.00	0.00	0.00	0.00	0.00			
417.00†	0.000	71.553	417.00	0.00	0.00	0.00	0.00			
517.00†	0.000	71.553	517.00	0.00	0.00	0.00	0.00			
617.00†	0.000	71.553	617.00	0.00	0.00	0.00	0.00			
717.00†	0.000	71.553	717.00	0.00	0.00	0.00	0.00			
817.00†	0.000	71.553	817.00	0.00	0.00	0.00	0.00			
917.00†	0.000	71.553	917.00	0.00	0.00	0.00	0.00			
1017.00†	0.000	71.553	1017.00	0.00	0.00	0.00	0.00			
1117.00†	0.000	71.553	1117.00	0.00	0.00	0.00	0.00			
1217.00†	0.000	71.553	1217.00	0.00	0.00	0.00	0.00			
1317.00†	0.000	71.553	1317.00	0.00	0.00	0.00	0.00			
1417.00†	0.000	71.553	1417.00	0.00	0.00	0.00	0.00			
1450.00	0.000	71.553	1450.00	0.00	0.00	0.00	0.00			End of Tangent
1517.00†	1.340	71.553	1516.99	0.35	0.25	0.74	2.00			
1617.00†	3.340	71.553	1616.91	2.15	1.54	4.62	2.00			
1717.00†	5.340	71.553	1716.61	5.49	3.93	11.79	2.00			
1817.00†	7.340	71.553	1816.00	10.37	7.43	22.27	2.00			
1917.00†	9.340	71.553	1914.93	16.77	12.02	36.03	2.00			
2017.00†	11.340	71.553	2013.31	24.69	17.70	53.05	2.00			
2117.00†	13.340	71.553	2110.99	34.13	24.46	73.33	2.00			
2217.00†	15.340	71.553	2207.87	45.07	32.30	96.82	2.00			
2317.00†	17.340	71.553	2303.83	57.49	41.20	123.51	2.00			
2417.00†	19.340	71.553	2398.74	71.38	51.15	153.35	2.00			
2512.12	21.242	71.553	2487.96	85.95	61.59	184.64	2.00			End of Build
2517.00†	21.242	71.553	2492.50	86.73	62.15	186.32	0.00			
2617.00†	21.242	71.553	2585.71	102.72	73.62	220.69	0.00			
2717.00†	21.242	71.553	2678.91	118.72	85.08	255.06	0.00			
2817.00†	21.242	71.553	2772.12	134.72	96.54	289.43	0.00			
2917.00†	21.242	71.553	2865.33	150.72	108.01	323.80	0.00			
3017.00†	21.242	71.553	2958.53	166.72	119.47	358.17	0.00			

**WELLPATH DATA (172 stations) † = interpolated/extrapolated station**

MD [ft]	Inclination [°]	Azimuth [°]	TVD [ft]	Vert Sect [ft]	North [ft]	East [ft]	DLS [°/100ft]	Comments
3117.00†	21.242	71.553	3051.74	182.71	130.94	392.54	0.00	
3217.00†	21.242	71.553	3144.94	198.71	142.40	426.91	0.00	
3317.00†	21.242	71.553	3238.15	214.71	153.87	461.28	0.00	
3417.00†	21.242	71.553	3331.35	230.71	165.33	495.65	0.00	
3517.00†	21.242	71.553	3424.56	246.71	176.80	530.02	0.00	
3617.00†	21.242	71.553	3517.76	262.70	188.26	564.39	0.00	
3717.00†	21.242	71.553	3610.97	278.70	199.73	598.76	0.00	
3817.00†	21.242	71.553	3704.18	294.70	211.19	633.13	0.00	
3917.00†	21.242	71.553	3797.38	310.70	222.66	667.50	0.00	
4017.00†	21.242	71.553	3890.59	326.70	234.12	701.87	0.00	
4117.00†	21.242	71.553	3983.79	342.69	245.58	736.24	0.00	



# Planned Wellpath Report

STATE ANTELOPE 34-32-29XRLNC PWP (REV-A.0)  
Page 3 of 6



REFERENCE WELLPATH IDENTIFICATION			
Operator	BONANZA CREEK OIL COMPANY	Slot	SLOT#27 STATE ANTELOPE 34-32-29XRLNC (584'FNL & 2591'FWL,SEC.05)
Area	COLORADO	Well	STATE ANTELOPE 34-32-29XRLNC
Field	WELD COUNTY	Wellbore	STATE ANTELOPE 34-32-29XRLNC PWB
Facility	SEC.05-T04N-R62W		

**WELLPATH DATA (172 stations)** † = interpolated/extrapolated station

MD [ft]	Inclination [°]	Azimuth [°]	TVD [ft]	Vert Sect [ft]	North [ft]	East [ft]	DLS [°/100ft]	Comments
4217.00†	21.242	71.553	4077.00	358.69	257.05	770.61	0.00	
4317.00†	21.242	71.553	4170.20	374.69	268.51	804.98	0.00	
4417.00†	21.242	71.553	4263.41	390.69	279.98	839.35	0.00	
4517.00†	21.242	71.553	4356.61	406.69	291.44	873.72	0.00	
4617.00†	21.242	71.553	4449.82	422.68	302.91	908.09	0.00	
4717.00†	21.242	71.553	4543.03	438.68	314.37	942.46	0.00	
4817.00†	21.242	71.553	4636.23	454.68	325.84	976.83	0.00	
4917.00†	21.242	71.553	4729.44	470.68	337.30	1011.20	0.00	
5017.00†	21.242	71.553	4822.64	486.68	348.77	1045.57	0.00	
5117.00†	21.242	71.553	4915.85	502.67	360.23	1079.94	0.00	
5217.00†	21.242	71.553	5009.05	518.67	371.70	1114.31	0.00	
5317.00†	21.242	71.553	5102.26	534.67	383.16	1148.68	0.00	
5417.00†	21.242	71.553	5195.46	550.67	394.62	1183.05	0.00	
5517.00†	21.242	71.553	5288.67	566.67	406.09	1217.42	0.00	
5617.00†	21.242	71.553	5381.88	582.66	417.55	1251.79	0.00	
5717.00†	21.242	71.553	5475.08	598.66	429.02	1286.16	0.00	
5817.00†	21.242	71.553	5568.29	614.66	440.48	1320.52	0.00	
5917.00†	21.242	71.553	5661.49	630.66	451.95	1354.89	0.00	
6017.00†	21.242	71.553	5754.70	646.66	463.41	1389.26	0.00	
6101.71	21.242	71.553	5833.65	660.21	473.12	1418.38	0.00	End of Tangent
6117.00†	21.724	67.588	5847.88	662.85	475.08	1423.62	10.00	
6217.00†	26.786	46.385	5939.20	689.82	497.74	1457.13	10.00	
6317.00†	33.974	32.525	6025.51	732.91	536.94	1488.55	10.00	
6417.00†	42.210	23.278	6104.21	790.79	591.49	1516.92	10.00	
6517.00†	50.981	16.641	6172.90	861.72	659.74	1541.38	10.00	
6617.00†	60.044	11.500	6229.49	943.54	739.62	1561.19	10.00	
6717.00†	69.272	7.230	6272.26	1033.76	828.69	1575.75	10.00	
6817.00†	78.594	3.457	6299.92	1129.64	924.25	1584.61	10.00	
6917.00†	87.961	359.926	6311.61	1228.26	1023.39	1587.51	10.00	
6938.75	90.000	359.171	6312.00 <sup>1</sup>	1249.78	1045.13	1587.34	10.00	End of 3D Arc
7017.00†	90.000	359.171	6312.00	1327.16	1123.38	1586.21	0.00	
7117.00†	90.000	359.171	6312.00	1426.04	1223.36	1584.76	0.00	
7217.00†	90.000	359.171	6312.00	1524.92	1323.35	1583.31	0.00	
7317.00†	90.000	359.171	6312.00	1623.80	1423.34	1581.87	0.00	

**WELLPATH DATA (172 stations) † = interpolated/extrapolated station**

MD [ft]	Inclination [°]	Azimuth [°]	TVD [ft]	Vert Sect [ft]	North [ft]	East [ft]	DLS [°/100ft]	Comments
7417.00†	90.000	359.171	6312.00	1722.68	1523.33	1580.42	0.00	
7517.00†	90.000	359.171	6312.00	1821.56	1623.32	1578.97	0.00	
7617.00†	90.000	359.171	6312.00	1920.44	1723.31	1577.52	0.00	
7717.00†	90.000	359.171	6312.00	2019.31	1823.30	1576.08	0.00	
7817.00†	90.000	359.171	6312.00	2118.19	1923.29	1574.63	0.00	
7917.00†	90.000	359.171	6312.00	2217.07	2023.28	1573.18	0.00	
8017.00†	90.000	359.171	6312.00	2315.95	2123.27	1571.73	0.00	
8117.00†	90.000	359.171	6312.00	2414.83	2223.26	1570.29	0.00	
8217.00†	90.000	359.171	6312.00	2513.71	2323.25	1568.84	0.00	
8317.00†	90.000	359.171	6312.00	2612.59	2423.24	1567.39	0.00	
8417.00†	90.000	359.171	6312.00	2711.47	2523.23	1565.94	0.00	



# Planned Wellpath Report

STATE ANTELOPE 34-32-29XRLNC PWP (REV-A.0)  
Page 4 of 6



REFERENCE WELLPATH IDENTIFICATION			
Operator	BONANZA CREEK OIL COMPANY	Slot	SLOT#27 STATE ANTELOPE 34-32-29XRLNC (584'FNL & 2591'FWL,SEC.05)
Area	COLORADO	Well	STATE ANTELOPE 34-32-29XRLNC
Field	WELD COUNTY	Wellbore	STATE ANTELOPE 34-32-29XRLNC PWB
Facility	SEC.05-T04N-R62W		

WELLPATH DATA (172 stations) † = interpolated/extrapolated station										
MD [ft]	Inclination [°]	Azimuth [°]	TVD [ft]	Vert Sect [ft]	North [ft]	East [ft]	DLS [°/100ft]	Comments		
8517.00†	90.000	359.171	6312.00	2810.35	2623.22	1564.50	0.00			
8617.00†	90.000	359.171	6312.00	2909.23	2723.21	1563.05	0.00			
8717.00†	90.000	359.171	6312.00	3008.11	2823.20	1561.60	0.00			
8817.00†	90.000	359.171	6312.00	3106.99	2923.19	1560.15	0.00			
8917.00†	90.000	359.171	6312.00	3205.87	3023.18	1558.70	0.00			
9017.00†	90.000	359.171	6312.00	3304.75	3123.17	1557.26	0.00			
9117.00†	90.000	359.171	6312.00	3403.63	3223.16	1555.81	0.00			
9217.00†	90.000	359.171	6312.00	3502.51	3323.14	1554.36	0.00			
9317.00†	90.000	359.171	6312.00	3601.39	3423.13	1552.91	0.00			
9417.00†	90.000	359.171	6312.00	3700.27	3523.12	1551.47	0.00			
9517.00†	90.000	359.171	6312.00	3799.15	3623.11	1550.02	0.00			
9617.00†	90.000	359.171	6312.00	3898.03	3723.10	1548.57	0.00			
9717.00†	90.000	359.171	6312.00	3996.90	3823.09	1547.12	0.00			
9817.00†	90.000	359.171	6312.00	4095.78	3923.08	1545.68	0.00			
9917.00†	90.000	359.171	6312.00	4194.66	4023.07	1544.23	0.00			
10017.00†	90.000	359.171	6312.00	4293.54	4123.06	1542.78	0.00			
10117.00†	90.000	359.171	6312.00	4392.42	4223.05	1541.33	0.00			
10217.00†	90.000	359.171	6312.00	4491.30	4323.04	1539.89	0.00			
10317.00†	90.000	359.171	6312.00	4590.18	4423.03	1538.44	0.00			
10417.00†	90.000	359.171	6312.00	4689.06	4523.02	1536.99	0.00			
10517.00†	90.000	359.171	6312.00	4787.94	4623.01	1535.54	0.00			
10617.00†	90.000	359.171	6312.00	4886.82	4723.00	1534.10	0.00			
10717.00†	90.000	359.171	6312.00	4985.70	4822.99	1532.65	0.00			
10817.00†	90.000	359.171	6312.00	5084.58	4922.98	1531.20	0.00			
10917.00†	90.000	359.171	6312.00	5183.46	5022.97	1529.75	0.00			
11017.00†	90.000	359.171	6312.00	5282.34	5122.96	1528.31	0.00			
11117.00†	90.000	359.171	6312.00	5381.22	5222.95	1526.86	0.00			
11217.00†	90.000	359.171	6312.00	5480.10	5322.93	1525.41	0.00			
11317.00†	90.000	359.171	6312.00	5578.98	5422.92	1523.96	0.00			
11417.00†	90.000	359.171	6312.00	5677.86	5522.91	1522.52	0.00			
11517.00†	90.000	359.171	6312.00	5776.74	5622.90	1521.07	0.00			
11617.00†	90.000	359.171	6312.00	5875.62	5722.89	1519.62	0.00			
11717.00†	90.000	359.171	6312.00	5974.49	5822.88	1518.17	0.00			
11817.00†	90.000	359.171	6312.00	6073.37	5922.87	1516.72	0.00			

**WELLPATH DATA (172 stations) † = interpolated/extrapolated station**

MD [ft]	Inclination [°]	Azimuth [°]	TVD [ft]	Vert Sect [ft]	North [ft]	East [ft]	DLS [°/100ft]	Comments
11917.00†	90.000	359.171	6312.00	6172.25	6022.86	1515.28	0.00	
12017.00†	90.000	359.171	6312.00	6271.13	6122.85	1513.83	0.00	
12117.00†	90.000	359.171	6312.00	6370.01	6222.84	1512.38	0.00	
12217.00†	90.000	359.171	6312.00	6468.89	6322.83	1510.93	0.00	
12317.00†	90.000	359.171	6312.00	6567.77	6422.82	1509.49	0.00	
12417.00†	90.000	359.171	6312.00	6666.65	6522.81	1508.04	0.00	
12517.00†	90.000	359.171	6312.00	6765.53	6622.80	1506.59	0.00	
12617.00†	90.000	359.171	6312.00	6864.41	6722.79	1505.14	0.00	
12717.00†	90.000	359.171	6312.00	6963.29	6822.78	1503.70	0.00	
12817.00†	90.000	359.171	6312.00	7062.17	6922.77	1502.25	0.00	
12917.00†	90.000	359.171	6312.00	7161.05	7022.76	1500.80	0.00	



# Planned Wellpath Report

STATE ANTELOPE 34-32-29XRLNC PWP (REV-A.0)  
Page 5 of 6



REFERENCE WELLPATH IDENTIFICATION			
Operator	BONANZA CREEK OIL COMPANY	Slot	SLOT#27 STATE ANTELOPE 34-32-29XRLNC (584'FNL & 2591'FWL,SEC.05)
Area	COLORADO	Well	STATE ANTELOPE 34-32-29XRLNC
Field	WELD COUNTY	Wellbore	STATE ANTELOPE 34-32-29XRLNC PWB
Facility	SEC.05-T04N-R62W		

WELLPATH DATA (172 stations) † = interpolated/extrapolated station									
MD [ft]	Inclination [°]	Azimuth [°]	TVD [ft]	Vert Sect [ft]	North [ft]	East [ft]	DLS [°/100ft]	Comments	
13017.00†	90.000	359.171	6312.00	7259.93	7122.75	1499.35	0.00		
13117.00†	90.000	359.171	6312.00	7358.81	7222.74	1497.91	0.00		
13217.00†	90.000	359.171	6312.00	7457.69	7322.73	1496.46	0.00		
13317.00†	90.000	359.171	6312.00	7556.57	7422.71	1495.01	0.00		
13417.00†	90.000	359.171	6312.00	7655.45	7522.70	1493.56	0.00		
13517.00†	90.000	359.171	6312.00	7754.33	7622.69	1492.12	0.00		
13617.00†	90.000	359.171	6312.00	7853.21	7722.68	1490.67	0.00		
13717.00†	90.000	359.171	6312.00	7952.08	7822.67	1489.22	0.00		
13817.00†	90.000	359.171	6312.00	8050.96	7922.66	1487.77	0.00		
13917.00†	90.000	359.171	6312.00	8149.84	8022.65	1486.33	0.00		
14017.00†	90.000	359.171	6312.00	8248.72	8122.64	1484.88	0.00		
14117.00†	90.000	359.171	6312.00	8347.60	8222.63	1483.43	0.00		
14217.00†	90.000	359.171	6312.00	8446.48	8322.62	1481.98	0.00		
14317.00†	90.000	359.171	6312.00	8545.36	8422.61	1480.54	0.00		
14417.00†	90.000	359.171	6312.00	8644.24	8522.60	1479.09	0.00		
14517.00†	90.000	359.171	6312.00	8743.12	8622.59	1477.64	0.00		
14617.00†	90.000	359.171	6312.00	8842.00	8722.58	1476.19	0.00		
14717.00†	90.000	359.171	6312.00	8940.88	8822.57	1474.74	0.00		
14817.00†	90.000	359.171	6312.00	9039.76	8922.56	1473.30	0.00		
14917.00†	90.000	359.171	6312.00	9138.64	9022.55	1471.85	0.00		
15017.00†	90.000	359.171	6312.00	9237.52	9122.54	1470.40	0.00		
15117.00†	90.000	359.171	6312.00	9336.40	9222.53	1468.95	0.00		
15217.00†	90.000	359.171	6312.00	9435.28	9322.52	1467.51	0.00		
15317.00†	90.000	359.171	6312.00	9534.16	9422.51	1466.06	0.00		
15417.00†	90.000	359.171	6312.00	9633.04	9522.49	1464.61	0.00		
15517.00†	90.000	359.171	6312.00	9731.92	9622.48	1463.16	0.00		
15617.00†	90.000	359.171	6312.00	9830.80	9722.47	1461.72	0.00		
15717.00†	90.000	359.171	6312.00	9929.67	9822.46	1460.27	0.00		
15817.00†	90.000	359.171	6312.00	10028.55	9922.45	1458.82	0.00		
15917.00†	90.000	359.171	6312.00	10127.43	10022.44	1457.37	0.00		
16017.00†	90.000	359.171	6312.00	10226.31	10122.43	1455.93	0.00		
16117.00†	90.000	359.171	6312.00	10325.19	10222.42	1454.48	0.00		
16217.00†	90.000	359.171	6312.00	10424.07	10322.41	1453.03	0.00		
16317.00†	90.000	359.171	6312.00	10522.95	10422.40	1451.58	0.00		

**WELLPATH DATA (172 stations)** † = interpolated/extrapolated station

MD [ft]	Inclination [°]	Azimuth [°]	TVD [ft]	Vert Sect [ft]	North [ft]	East [ft]	DLS [°/100ft]	Comments
16417.00†	90.000	359.171	6312.00	10621.83	10522.39	1450.14	0.00	
16517.00†	90.000	359.171	6312.00	10720.71	10622.38	1448.69	0.00	
16530.00	90.000	359.171	6312.00 <sup>2</sup>	10733.57	10635.38	1448.50	0.00	End of Tangent

**HOLE & CASING SECTIONS - Ref Wellbore: STATE ANTELOPE 34-32-29XRLNC PWB Ref Wellpath: STATE ANTELOPE 34-32-29XRLNC PWP (REV-A.0)**

String/Diameter	Start MD [ft]	End MD [ft]	Interval [ft]	Start TVD [ft]	End TVD [ft]	Start N/S [ft]	Start E/W [ft]	End N/S [ft]	End E/W [ft]
9.625in Casing Surface	17.00	1450.00	1433.00	17.00	1450.00	0.00	0.00	0.00	0.00
8.5in Open Hole	1450.00	16530.00	15080.00	1450.00	6312.00	0.00	0.00	10635.38	1448.50



# Planned Wellpath Report

STATE ANTELOPE 34-32-29XRLNC PWP (REV-A.0)  
Page 6 of 6



REFERENCE WELLPATH IDENTIFICATION			
Operator	BONANZA CREEK OIL COMPANY	Slot	SLOT#27 STATE ANTELOPE 34-32-29XRLNC (584'FNL & 2591'FWL,SEC.05)
Area	COLORADO	Well	STATE ANTELOPE 34-32-29XRLNC
Field	WELD COUNTY	Wellbore	STATE ANTELOPE 34-32-29XRLNC PWB
Facility	SEC.05-T04N-R62W		

TARGETS									
Name	MD [ft]	TVD [ft]	North [ft]	East [ft]	Grid East [US ft]	Grid North [US ft]	Latitude	Longitude	Shape
SEC.05-T4N-R62W		-1.00	1267.63	-4334.39	3316030.65	1372684.68	40°21'03.146"N	104°21'57.863"W	polygon
SEC.29-T05N-R62W		-1.00	11303.25	-405.62	3319828.83	1382769.94	40°22'42.319"N	104°21'07.121"W	polygon
SEC.32-T05N-R62W		-1.00	11303.25	-405.62	3319828.83	1382769.94	40°22'42.319"N	104°21'07.121"W	polygon
2) STATE ANTELOPE 34-32-29XRLNC BHL (470'FNL & 1986'FEL,SEC.29)	16530.00	6312.00	10635.38	1448.50	3321691.37	1382126.19	40°22'35.719"N	104°20'43.164"W	point
1) STATE ANTELOPE 34-32-29XRLNC LP (470'FSL & 1819'FEL,SEC.32)	6938.75	6312.00	1045.13	1587.34	3321954.51	1372538.97	40°21'00.951"N	104°20'41.378"W	point

SURVEY PROGRAM - Ref Wellbore: STATE ANTELOPE 34-32-29XRLNC PWB    Ref Wellpath: STATE ANTELOPE 34-32-29XRLNC PWP (REV-A.0)				
Start MD [ft]	End MD [ft]	Positional Uncertainty Model	Log Name/Comment	Wellbore
17.00	1450.00	BHI NaviTrak (Rotating+Axial Corr)		STATE ANTELOPE 34-32-29XRLNC PWB
1450.00	16530.00	BHI AutoTrak Curve (Axial Corr, Short spacing)		STATE ANTELOPE 34-32-29XRLNC PWB