

Inspection Photos

API#077-08068

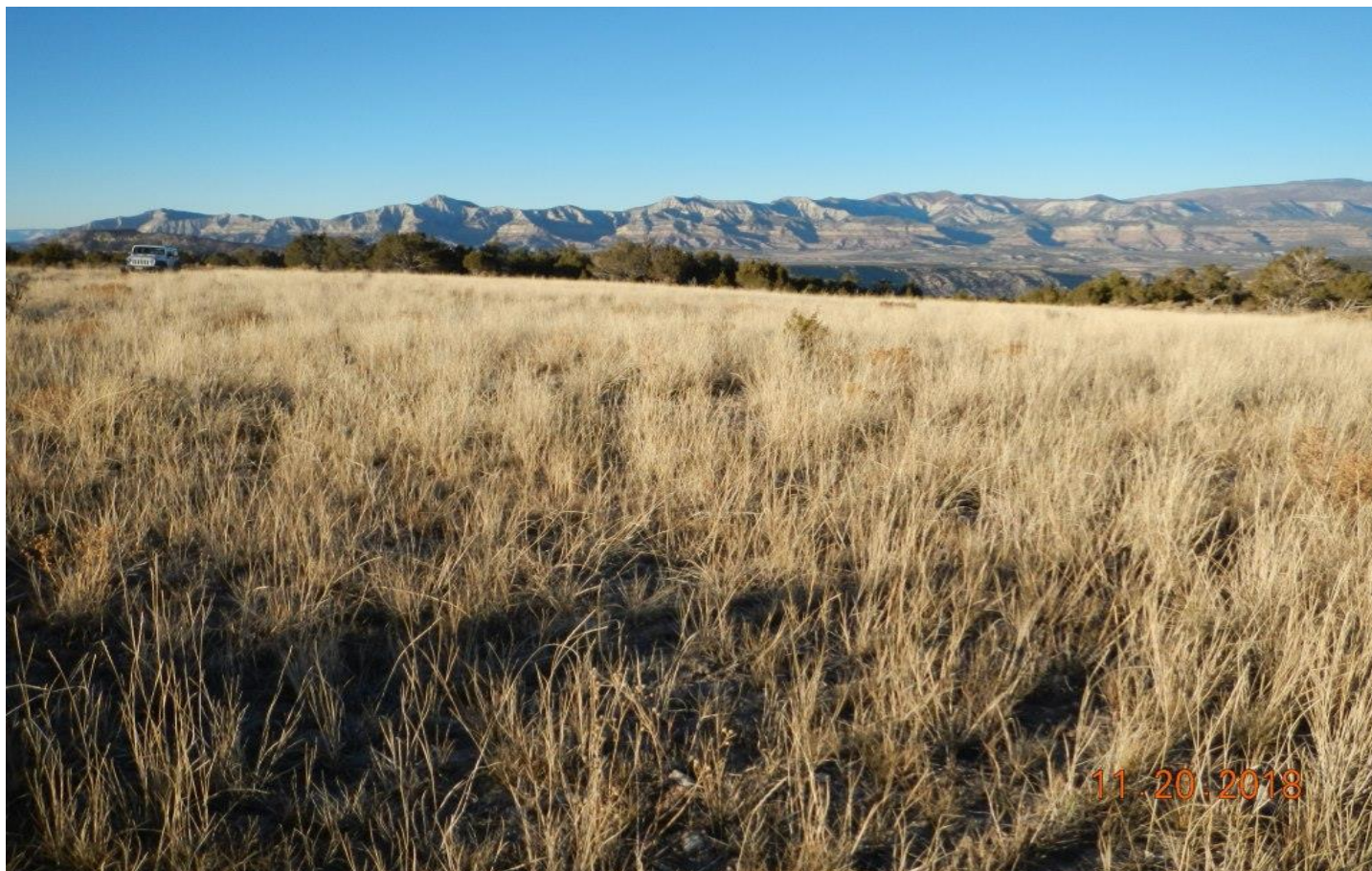
Operator: Caerus

Inspection Number: 692400420

Inspection Date: 11/20/2018



COLORADO
Oil & Gas Conservation
Commission
Department of Natural Resources



Photo#1:
Overview of Location to North.

November 20, 2018



COLORADO
Oil & Gas Conservation
Commission
Department of Natural Resources

Inspection Photos: Caerus PA Milholland API#077-08068



Photo#2:

Spot, bare and sparse of vegetation, at former well head or equipment position.



Photo#3:

Spot, bare and sparse of vegetation, at former well head or equipment position.

November 20, 2018



COLORADO
Oil & Gas Conservation
Commission
Department of Natural Resources

Inspection Photos: Caerus PA Milholland API#077-08068

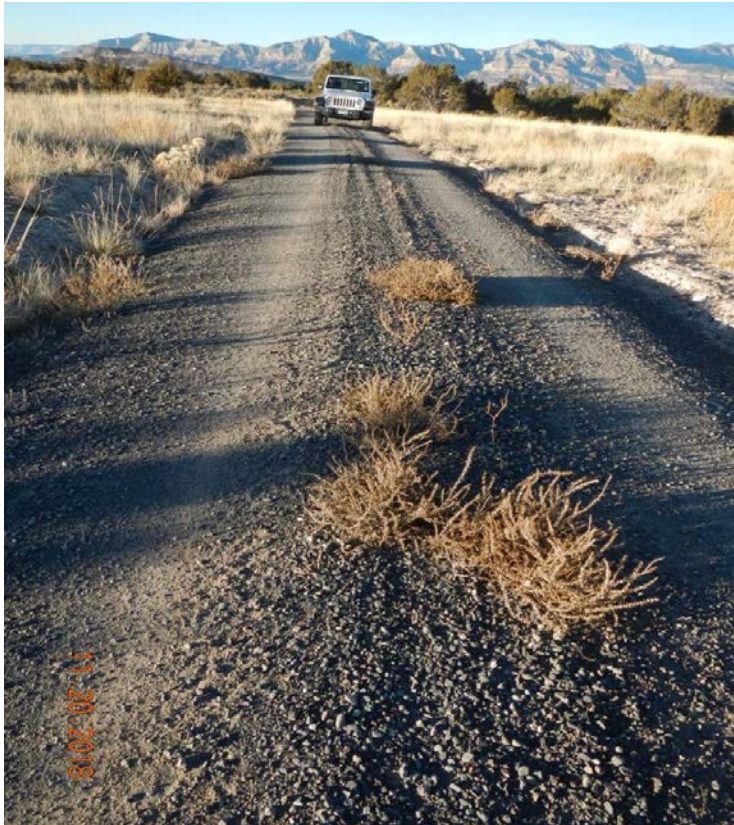


Photo#4:
Wattles are installed on East perimeter.

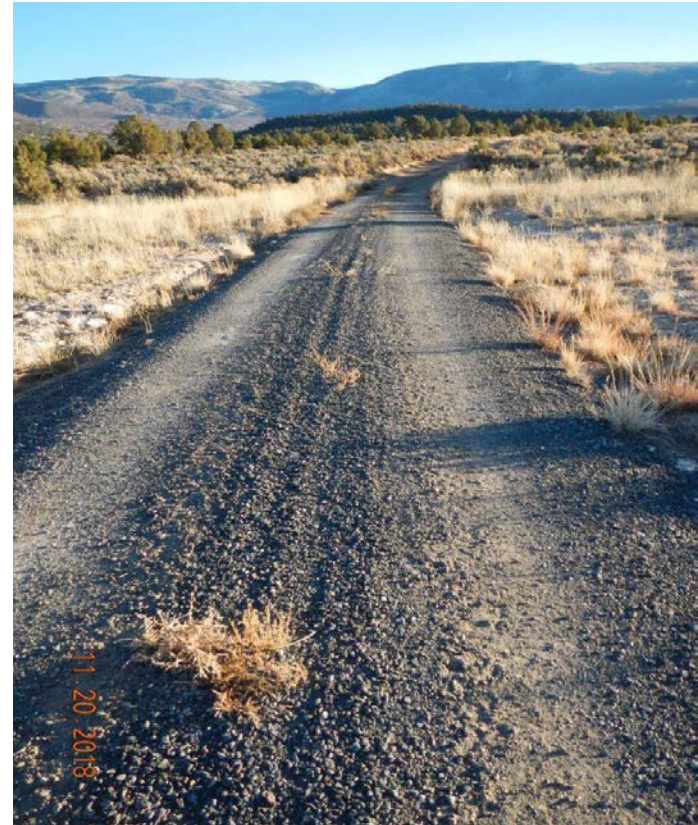
November 20, 2018



Photo#5:
Wattles are installed on East perimeter.



Photo#6:
Access road; subject of variance request.



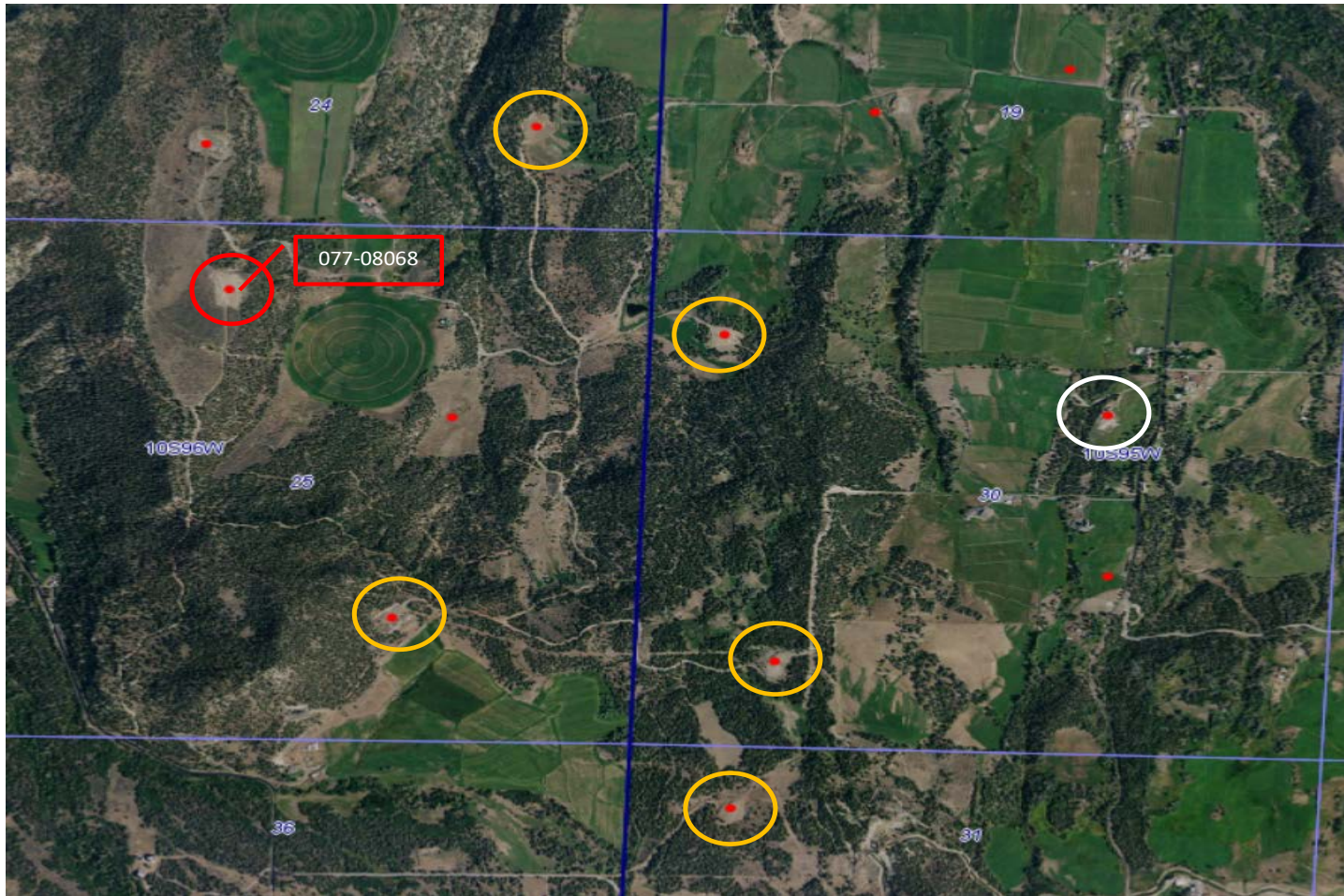
Photo#7:
Access road; subject of variance request.

November 20, 2018



COLORADO
Oil & Gas Conservation
Commission
Department of Natural Resources

Inspection Photos: Caerus PA Milholland API#077-08068



Photo#8:

Aerial view of Well area: subject Well circled in red; orange, circles other Wells with Variance Requests submitted; white circles Well that will most likely have variance submitted.

November 20, 2018



COLORADO
Oil & Gas Conservation
Commission
Department of Natural Resources

Inspection Photos: Caerus PA Milholland API#077-08068