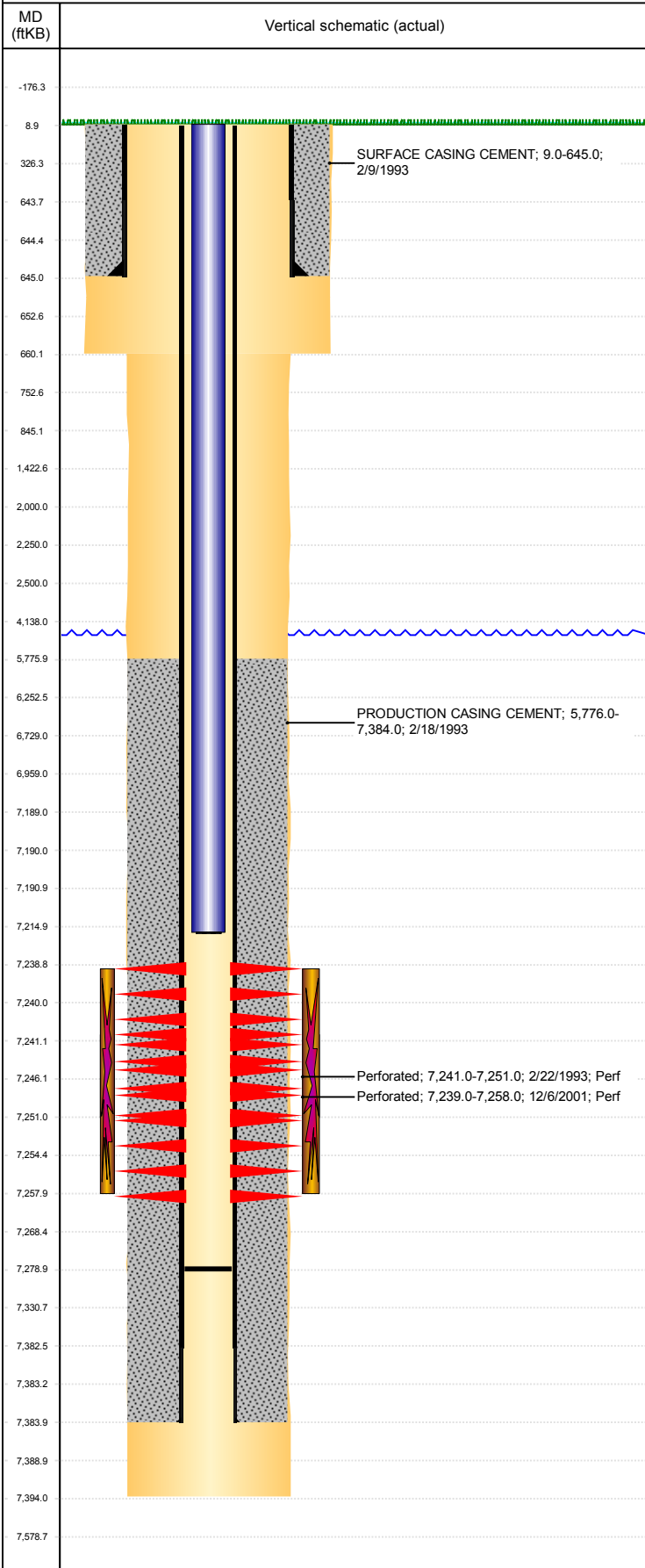


**Well Name: STATE 36-05E**

VERTICAL, ORIGINAL HOLE, 12/4/2018 5:35:28 PM



Well Header									
API 05-123-16761		Business Unit DJ BASIN		District 15		Well Config VERTICAL			
KB - GL / MSL (ft... 9.00		Spud Date 2/8/1993		P & A Date		Well Production Status SI		SoRT No	
Comment St lse 70-815804									
Surface Location (Congressional)									
Qtr 3 SW	Qtr 4 NW	Section 36	Twncshp 4	Twncsh... N	Range 67	Rng E... W	Actual Latitude (°) 40.27044114	Actual Longitude (°) -104.84653142	
Wellbore Sections									
Section Des		Size (in)		Act Top, MD (ftKB)		Act Btm, MD (ftKB)			
SURFACE		12 1/4		9		660			
PRODUCTION		7 7/8		660		7,394			
Casing Strings									
Csg Des		Run Date		OD (in)		Wt/Len (lb/ft)		Grade	
Surface		2/8/1993		8 5/8		6.50		WC50	
Production		2/18/1993		2 7/8		6.50		WC50	
								Top, MD (ftKB)	
								9.0	
								9.0	
								MD (ftKB)	
								645.0	
								7,384.0	
Cement									
Des		Start Date		Top (ftKB)		Btm (ftKB)			
SURFACE CASING CEMENT		2/9/1993		9.0		645.0			
PRODUCTION CASING CEMENT		2/18/1993		5,776.0		7,384.0			
Zone Statuses									
Zone Name		Status Date		Status		Fluid Type		Job	
CODELL		3/16/1993		PR		Gas		DRILLING/COMPLETION - ORIGINAL, 2/8/1993...	
CODELL		3/5/2002		PR		Gas		RE-FRAC, 12/6/2001 00:00	
Perforation Data									
Linked Zone		Bnch/Stg		Entered Shot Total		Top (ftKB)		Btm (ftKB)	
CODELL, ORIGINAL HOLE				76		7,239.00		7,258.00	
CODELL, ORIGINAL HOLE				20		7,241.00		7,251.00	
								Date	
								12/6/2001	
								2/22/1993	
Stimulation Intervals									
Zone		Start Date		Top (ftKB)		Btm (ftKB)			
CODELL, ORIGINAL HOLE		3/4/2002		7,239.0		7,258.0			
CODELL, ORIGINAL HOLE		2/24/1993		7,241.0		7,251.0			
Other In Hole									
Run Date		Des		OD (in)		Top (ftKB)		Btm (ftKB)	
Logs									
Date		Type		Top, MD (ftKB)		Btm, MD (ftKB)			
2/15/1993		CBL/CCL/GR		630.0		7,422.6			
2/15/1993		INDUCTION		630.0		7,422.6			
2/22/1993		CEMENT BOND		5,550.0		7,315.0			
Plug Back Total Depths									
Date		Type		Com		Depth (ftKB)			
2/19/1993		GUIDE SHOE				7,324.0			
2/1/2010		FILL		21' OF RATHOLE.		7,279.0			