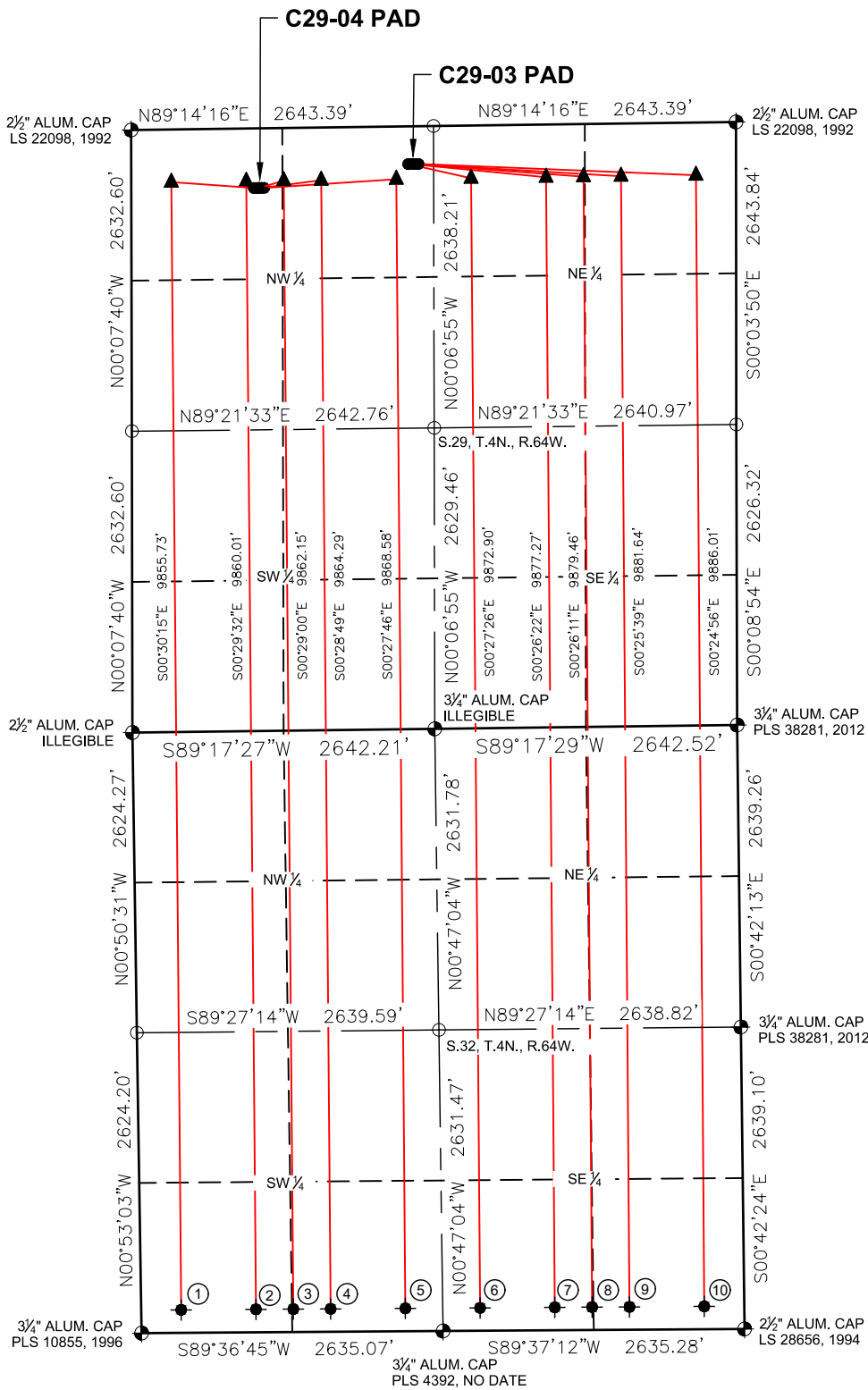
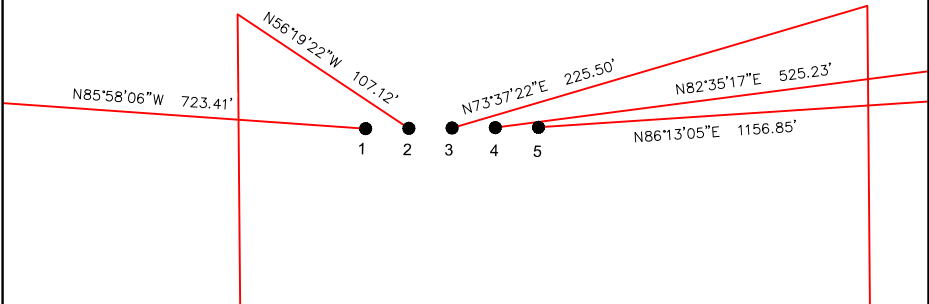


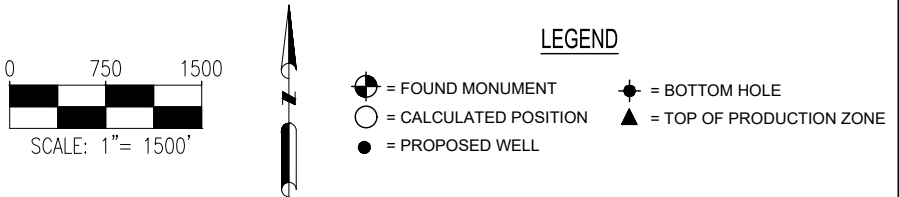
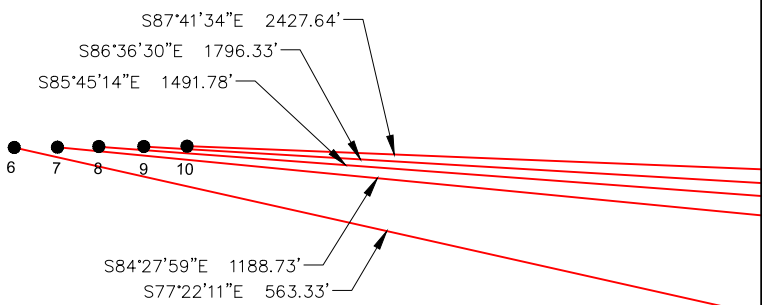
C29-04 PAD & C29-03 PAD
MULTI-WELL LOCATION PLAT / MULTI-WELL PLAN
T4N R64W SECTION 29



PROPOSED WELLBORE DIRECTION DATA
C29-04 PAD
SLOTS 1-5



PROPOSED WELLBORE DIRECTION DATA
C29-03 PAD
SLOTS 6-10



Notes:
1) All bearings are Grid Bearings of the Colorado State Plane Coordinate System, North Zone, North American Datum 1983/2011. The lineal dimensions as shown herein are grid distances based upon the "U.S. Survey Foot." To get ground distances multiply shown distance by 1.000267.
2) Distances are measured at 90° from section line of the Sixth Principal Meridian, County of Weld, State of Colorado.
3) Ground elevations are based on an observed GPS elevation (NAVD 1988 DATUM).
4) Surface use C29-04 Pad: "RANGELAND"
5) Surface use C29-03 Pad: "DRY & IRRIGATED CROP"
6) Instrument Operator: Alan Hnizdo
7) This map does not represent a boundary survey.

DISCLAIMER:
THIS PLOT DOES NOT REPRESENT A MONUMENTED LAND SURVEY AND SHOULD NOT BE RELIED UPON TO DETERMINE BOUNDARY LINES, PROPERTY OWNERSHIP OR OTHER PROPERTY INTERESTS. PARCEL LINES, IF DEPICTED HAVE NOT BEEN FIELD VERIFIED AND MAY BE BASED UPON PUBLICLY AVAILABLE DATA THAT ALSO HAS NOT BEEN INDEPENDENTLY VERIFIED.

SURFACE HOLE LOCATION							TOP OF PRODUCTIVE ZONE		BOTTOM HOLE LOCATION	
SLOT	WELL NAME	LATITUDE	LONGITUDE	FOOTAGE		QTR-QTR	ELEV.	FOOTAGE		FOOTAGE
1	JOHNSON C32-785	40.28923°N	104.58036°W	520' FNL	1072' FWL	NWNW	4786'	460' FNL	350' FWL	200' FSL
2	JOHNSON C32-775	40.28923°N	104.58028°W	521' FNL	1094' FWL	NWNW	4786'	460' FNL	1005' FWL	200' FSL
3	JOHNSON C32-770	40.28923°N	104.58019°W	521' FNL	1117' FWL	NWNW	4786'	460' FNL	1333' FWL	200' FSL
4	JOHNSON C32-765	40.28923°N	104.58011°W	521' FNL	1139' FWL	NWNW	4787'	460' FNL	1660' FWL	200' FSL
5	JOHNSON C32-755	40.28923°N	104.58003°W	521' FNL	1162' FWL	NWNW	4787'	460' FNL	2316' FWL	200' FSL
6	JOHNSON C32-745	40.28977°N	104.57551°W	330' FNL	2421' FWL	NENW	4774'	460' FNL	2316' FEL	200' FSL
7	JOHNSON C32-735	40.28977°N	104.57543°W	330' FNL	2443' FWL	NENW	4775'	460' FNL	1660' FEL	200' FSL
8	JOHNSON C32-730	40.28977°N	104.57535°W	330' FNL	2466' FWL	NENW	4775'	460' FNL	1333' FEL	200' FSL
9	JOHNSON C32-725	40.28977°N	104.57527°W	330' FNL	2488' FWL	NENW	4774'	460' FNL	1005' FEL	200' FSL
10	JOHNSON C32-715	40.28977°N	104.57519°W	330' FNL	2511' FWL	NENW	4774'	460' FNL	350' FEL	200' FSL

7535 Hilltop Circle
Denver, CO 80221
(303) 928-7128
www.ascentgeomatics.com

FIELD DATE:
08-31-18

DRAWN BY:
IJM

DRAWING DATE:
12-04-18

CHECKED BY:
CLP

SURFACE LOCATION:
SEC. 29, T4N, R64W, 6TH P.M.
WELD COUNTY, COLORADO

PUBLICLY AVAILABLE DATA SOURCES HAVE NOT BEEN INDEPENDENTLY VERIFIED BY ASCENT.