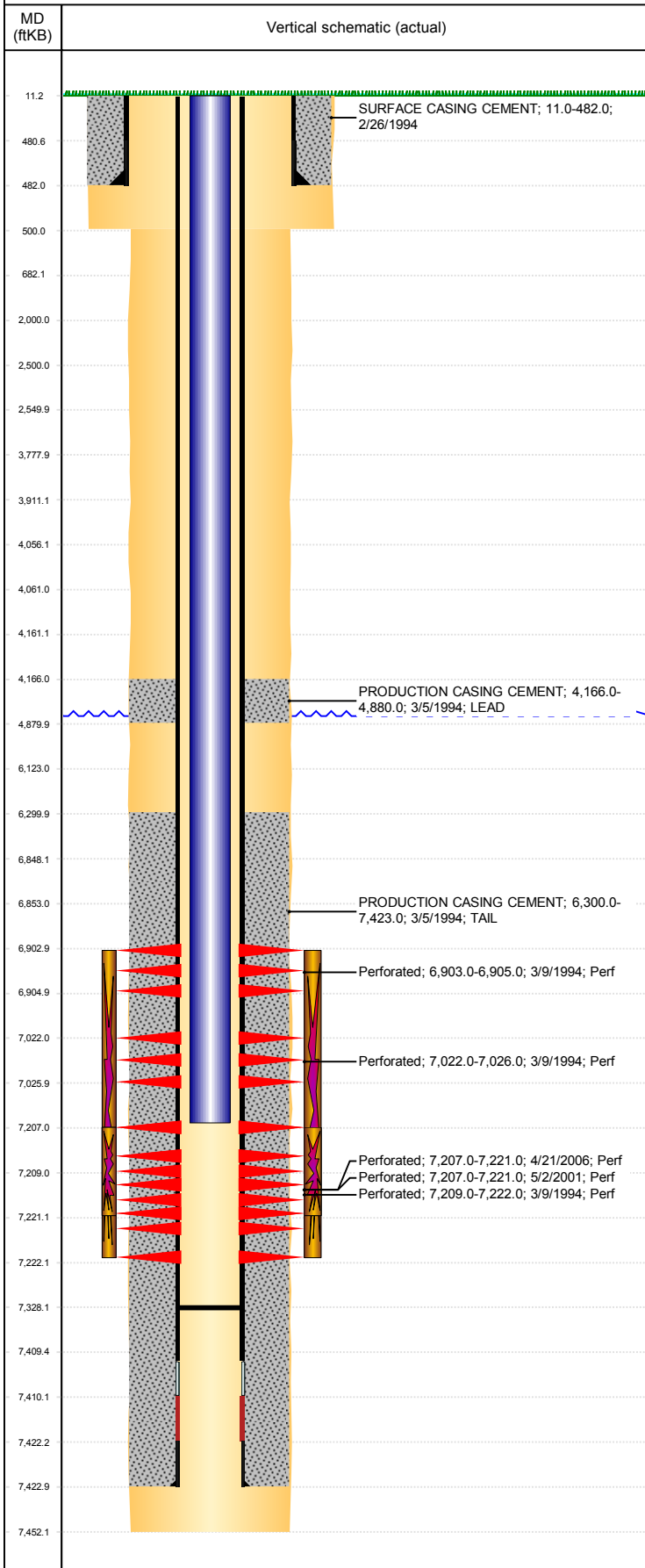


Well Name: UPRC 05-316

VERTICAL, ORIGINAL HOLE, 12/4/2018 12:09:50 PM



Well Header									
API 05-123-17984		Business Unit DJ BASIN			District 15		Well Config VERTICAL		
KB - GL / MSL (ft... 11.00		Spud Date 2/25/1994		P & A Date		Well Production Status PR			SoRT No
Comment LIMITED ENTRY. 112 jts 2 1/16" tbg stuck 4/19/06, FISH EXTREMELY CORKSCREWED & CORRODED. TD DISCREPANCY: OLDER DRL RPT & ST COMP RPT = 7461, NEWER DRL RPTS & OPEN HOLE LOG = 7450. SURFACE HOLE SIZE DISCREPANCY: DRL RPTS = 11', ST COMP RPT = 12 1/4, USED 12 1/4 TO MATCH STATE. CEMENT BASKET ON JT #52. CEMENT COVERAGE SKETCHY 4880'-5100', REFER TO CBL. STATE SHOWS SHUT IN SINCE OCT 2016.									
Surface Location (Congressional)									
Qtr 3 NE	Qtr 4 NW	Section 5	Twonshp 4	Twonsh... N	Range 66	Rng E/... W	Actual Latitude (°) 40.34692938	Actual Longitude (°) -104.80447926	
Wellbore Sections									
Section Des			Size (in)			Act Top, MD (ftKB)		Act Btm, MD (ftKB)	
SURFACE			12 1/4			11		500	
PRODUCTION			7 7/8			500		7,452	
Casing Strings									
Csg Des		Run Date		OD (in)	Wt/Len (lb/ft)	Grade	Top, MD (ftKB)	MD (ftKB)	
Surface		2/26/1994		8 5/8	23.00		11.0	482.0	
Production		3/5/1994		3 1/2	7.70	B-70	11.0	7,423.0	
Cement									
Des				Start Date		Top (ftKB)		Btm (ftKB)	
SURFACE CASING CEMENT				2/26/1994		11.0		482.0	
PRODUCTION CASING CEMENT				3/5/1994		4,166.0		4,880.0	
PRODUCTION CASING CEMENT				3/5/1994		6,300.0		7,423.0	
Zone Statuses									
Zone Name	Status Date	Status	Fluid Type	Job			Prod Method		
NIOBRARA-CO...		PR							
CODELL	5/25/2001	PR		RE-FRAC, 5/1/2001 00:00			Flowing		
CODELL	6/12/2006	PR		TRI-FRAC, 4/17/2006 00:00			Flowing		
Perforation Data									
Linked Zone		Bnch/Stg	Entered Shot Total	Top (ftKB)		Btm (ftKB)		Date	
NIOBRARA-CODELL, ORIGINAL...		A	2	6,903.00		6,905.00		3/9/1994	
NIOBRARA, ORIGINAL HOLE		B	4	7,022.00		7,026.00		3/9/1994	
CODELL, ORIGINAL HOLE			56	7,207.00		7,221.00		5/2/2001	
CODELL, ORIGINAL HOLE			28	7,207.00		7,221.00		4/21/2006	
CODELL, ORIGINAL HOLE			9	7,209.00		7,222.00		3/9/1994	
Stimulation Intervals									
Zone			Start Date			Top (ftKB)		Btm (ftKB)	
NIOBRARA-CODELL, ORIGINAL HOLE			3/11/1994			6,903.0		7,222.0	
CODELL, ORIGINAL HOLE			5/16/2001			7,207.0		7,221.0	
CODELL, ORIGINAL HOLE			5/2/2006			7,207.0		7,221.0	
Other In Hole									
Run Date		Des				OD (in)	Top (ftKB)	Btm (ftKB)	
Logs									
Date		Type				Top, MD (ftKB)		Btm, MD (ftKB)	
3/4/1994		COMPENSATED DENSITY				4,270.0		7,448.0	
3/4/1994		INDUCTION				490.0		7,450.0	
3/9/1994		CEMENT BOND				4,100.0		7,346.0	
Plug Back Total Depths									
Date		Type		Com				Depth (ftKB)	
3/9/1994		FILL		DEPTH LOGGER ON CBL				7,351.0	
5/4/2006		FILL		CLEAN OUT 105.75' RAT HOLE				7,328.0	