



CRESTONE PEAK
RESOURCES

SECTION DETAILS

Sec	MD	Inc	Azi	TVD	+N/-S	+E/-W	Dleg	TFace	Vsect	Target
1	0.00	0.00	0.00	0.00	0.00	0.00	0.00	0.00	0.00	
2	200.00	0.00	0.00	200.00	0.00	0.00	0.00	0.00	0.00	
3	895.08	13.90	236.04	888.28	-46.88	-69.60	2.00	236.04	-31.56	
4	6673.81	13.90	236.04	6497.75	-822.51	-1221.11	0.00	0.00	-553.75	
5	7902.07	90.68	359.39	7291.31	-106.02	-1394.82	8.00	122.44	183.14	
6	9772.07	90.68	359.39	7269.00	1763.74	-1414.65	0.00	0.00	2017.00	DAVIS 1T 2017' VS
7	9789.62	90.74	359.74	7268.78	1781.29	-1414.79	2.00	80.65	2034.21	
8	11070.67	90.74	359.74	7252.22	3062.22	-1420.63	0.00	0.00	3288.95	
9	11117.68	89.80	359.74	7252.00	3109.23	-1420.85	2.00	-179.86	3335.00	DAVIS 1T 3335' VS
10	14850.36	89.80	359.74	7265.00	6841.85	-1438.02	0.00	0.00	6991.34	DAVIS 1T-9H-G266 BHL

FINAL
DAVIS 1T-9H-G266
370837 185100 384737 185157
23° 12' 30" @ 4940.00ust
Ground Level @ 4917.00
North American Datum 1983
Well DAVIS 1T-9H-G266 - Slot DAVIS 1T-9H, True North

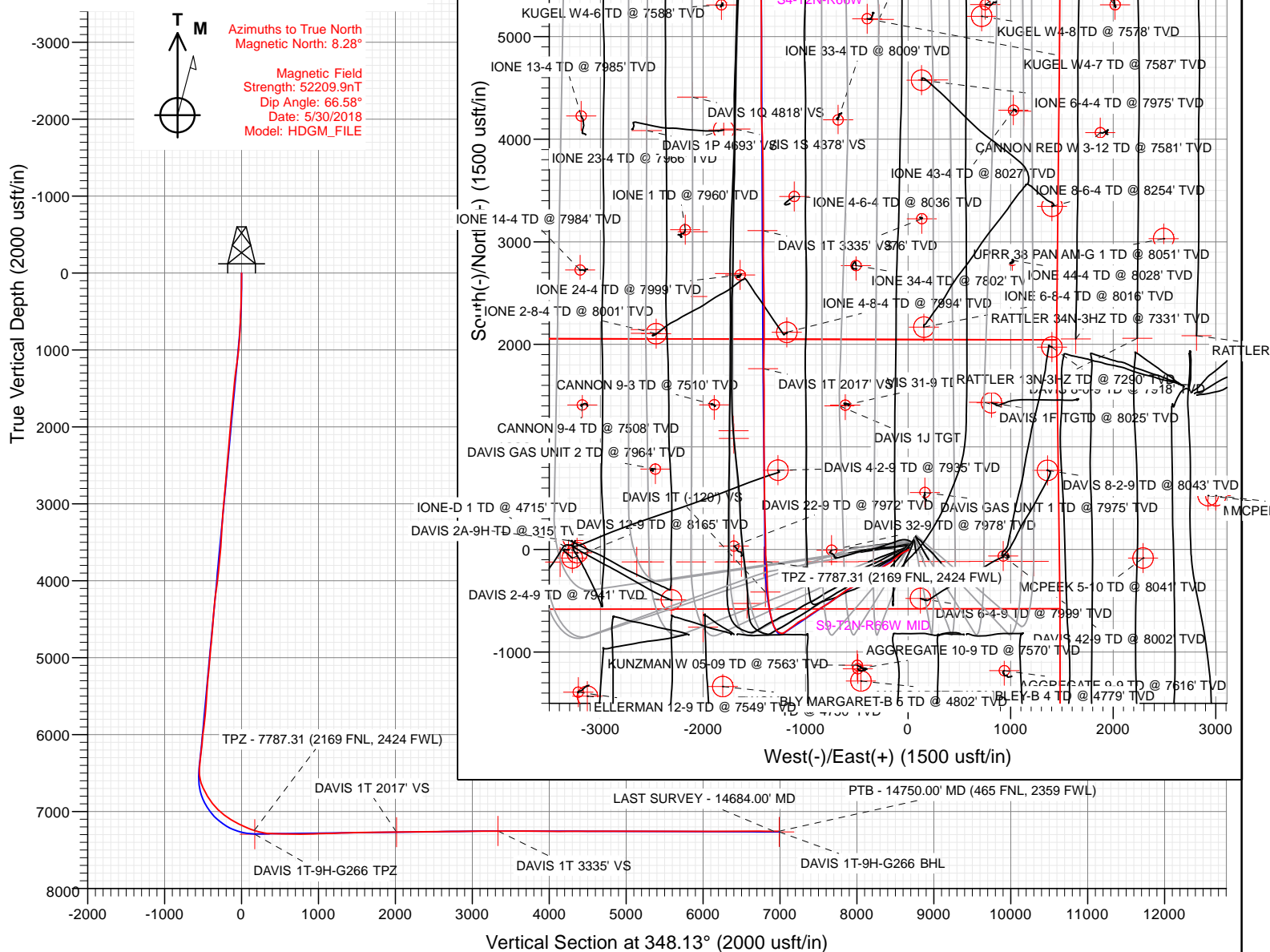
Type	Target	No Target (Freehand)	Asimuth	Origin Type	Slot	N/S	E/W	From TVD
Name	TVD		+N/-S	+E/-W	Latitude	Longitude		
DAVIS 1T 3335' VS	7252.00		3109.23	-1420.85	40.162737	-104.783154		
DAVIS 1T-9H-G266 BHL	7265.00		6841.85	-1438.02	40.172983	-104.783216		
DAVIS 1T 2017' VS	7269.00		1763.74	-1414.65	40.159043	-104.783132		
DAVIS 1T (-120') VS	7295.00		-415.10	-1391.54	40.153062	-104.783049		
DAVIS 1T-9H-G266 TPZ	7295.00		-119.61	-1405.99	40.153873	-104.783100		

Project: DJ BASIN
Site: S4-T2N-R66W
Well: DAVIS 1T-9H-G266
Wellbore: OH
Design: FINAL



Azimuths to True North
Magnetic North: 8.28°

Magnetic Field
Strength: 52209.9nT
Dip Angle: 66.58°
Date: 5/30/2018
Model: HDGM_FILE



WELL DETAILS: DAVIS 1T-9H-G266

+N/-S	+E/-W	Northing	Easting	Latitude	Longitude	
0.00	0.00	1299840.38	3201791.61	40.154202	-104.778070	DAVIS 1T-9H

CATHEDRAL





CRESTONE PEAK
RESOURCES

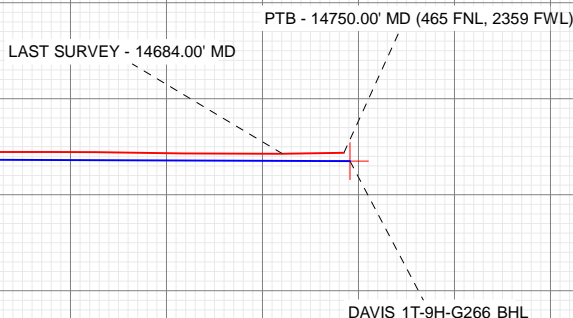
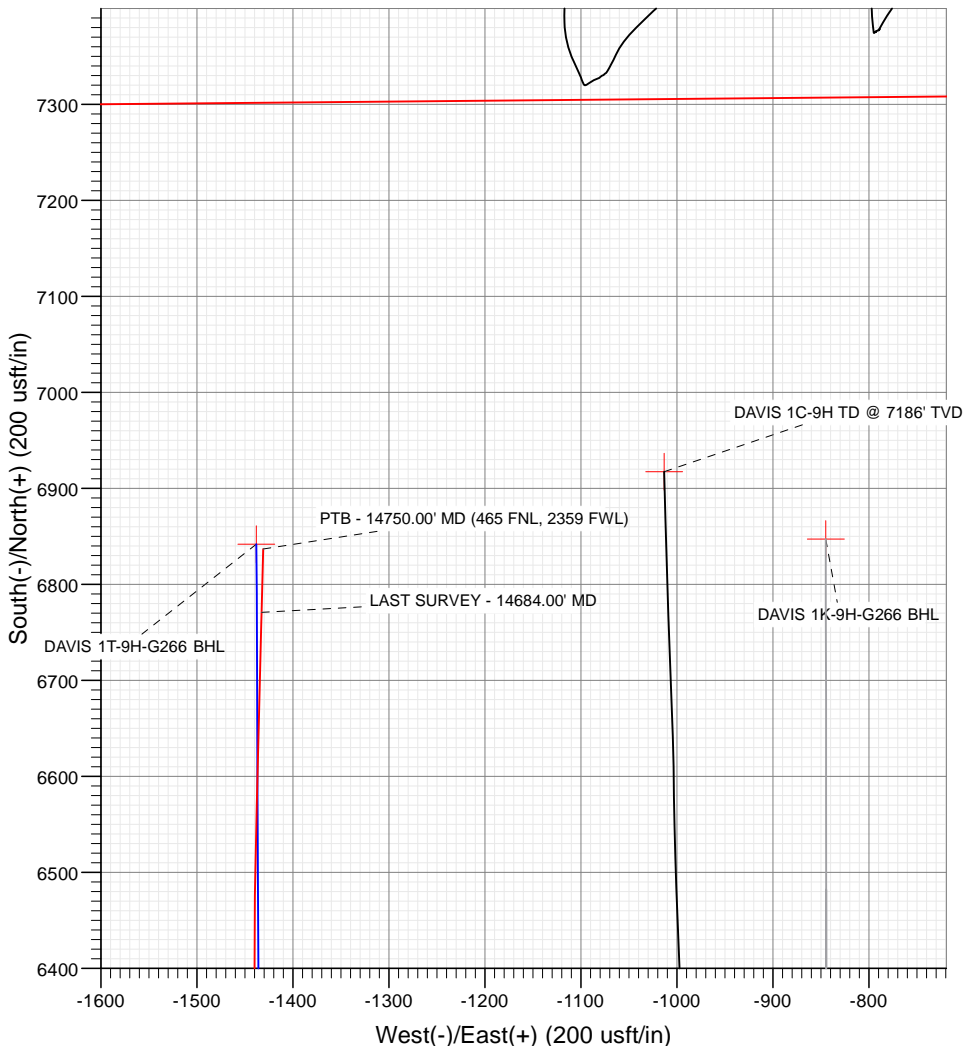
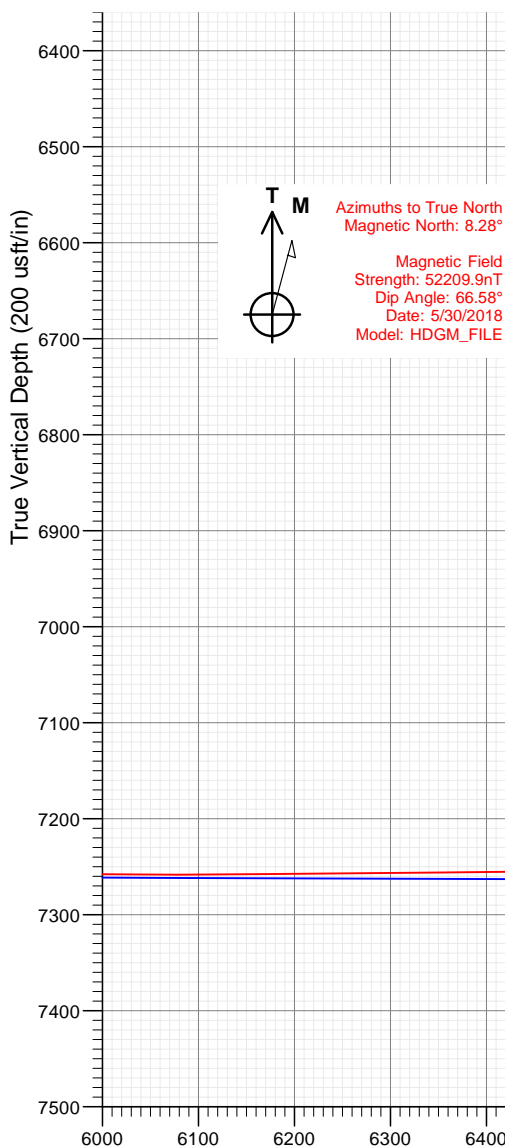
SECTION DETAILS

Sec	MD	Inc	Azi	TVD	+N/-S	+E/-W	Dleg	TFace	VSect	Target
1	0.00	0.00	0.00	0.00	0.00	0.00	0.00	0.00	0.00	
2	200.00	0.00	0.00	200.00	0.00	0.00	0.00	0.00	0.00	
3	895.08	13.90	236.04	888.28	-46.88	-69.60	2.00	236.04	-31.56	
4	6673.81	13.90	236.04	6497.75	-822.51	-1221.11	0.00	0.00	-553.75	
5	7902.07	90.68	359.39	7291.31	-106.02	-1394.82	8.00	122.44	183.14	
6	9772.07	90.68	359.39	7269.00	1763.74	-1414.65	0.00	0.00	2017.00	DAVIS 1T 2017' VS
7	9789.62	90.74	359.74	7268.78	1781.29	-1414.79	2.00	80.65	2034.21	
8	11070.67	90.74	359.74	7252.22	3062.22	-1420.63	0.00	0.00	3288.95	
9	11117.68	89.80	359.74	7252.00	3109.23	-1420.85	2.00	-179.86	3335.00	DAVIS 1T 3335' VS
10	14850.36	89.80	359.74	7265.00	6841.85	-1438.02	0.00	0.00	6991.34	DAVIS 1T-9H-G266 BHL

FINAL
DAVIS 1T-9H-G266
370837 185100 384737 185157
23 K2 @ 4940.00ust
Ground Level @ 4917.00
North American Datum 1983
Well DAVIS 1T-9H-G266 - Slot DAVIS 1T-9H, True North

Type	Target	No Target (Freehand)	Asimuth	Origin Type	N/S	E/W	From TVD
Name	TVD	+N/-S	+E/-W	Latitude	Longitude		
DAVIS 1T 3335' VS	7252.00	3109.23	-1420.85	40.162737	-104.783154		
DAVIS 1T-9H-G266 BHL	7265.00	6841.85	-1438.02	40.172983	-104.783216		
DAVIS 1T 2017' VS	7269.00	1763.74	-1414.65	40.159043	-104.783132		
DAVIS 1T (-120') VS	7295.00	-415.10	-1391.54	40.153062	-104.783049		
DAVIS 1T-9H-G266 TPZ	7295.00	-119.61	-1405.99	40.153873	-104.783100		

Project: DJ BASIN
Site: S4-T2N-R66W
Well: DAVIS 1T-9H-G266
Wellbore: OH
Design: FINAL



WELL DETAILS: DAVIS 1T-9H-G266

4917.00
+N/-S 0.00 +E/-W 0.00 Northing 1299840.38 Easting 3201791.61 Latitude 40.154202 Longitude -104.778070 DAVIS 1T-9H

CATHEDRAL



Cathedral Energy Services

Survey Report

Company:	Crestone Peak Resources	Local Co-ordinate Reference:	Well DAVIS 1T-9H-G266 - Slot DAVIS 1T-9H
Project:	DJ BASIN	TVD Reference:	23' KB @ 4940.00usft
Site:	S4-T2N-R66W	MD Reference:	23' KB @ 4940.00usft
Well:	DAVIS 1T-9H-G266	North Reference:	True
Wellbore:	OH	Survey Calculation Method:	Minimum Curvature
Design:	FINAL	Database:	USA EDM 5000 Multi Users DB

Project	DJ BASIN		
Map System:	US State Plane 1983	System Datum:	Mean Sea Level
Geo Datum:	North American Datum 1983		
Map Zone:	Colorado Northern Zone		

Site		S4-T2N-R66W			
Site Position:		Northing:	1,300,048.95 usft	Latitude:	40.154783
From:	Map	Easting:	3,201,389.75 usft	Longitude:	-104.779502
Position Uncertainty:	0.00 usft	Slot Radius:	13-3/16 "	Grid Convergence:	0.47 °

Well	DAVIS 1T-9H-G266 - Slot DAVIS 1T-9H					
Well Position	+N/-S	0.00 usft	Northing:	1,299,840.38 usft	Latitude:	40.154202
	+E/-W	0.00 usft	Easting:	3,201,791.61 usft	Longitude:	-104.778070
Position Uncertainty		0.00 usft	Wellhead Elevation:	usft	Ground Level:	4,917.00 usft

Wellbore	OH				
Magnetics	Model Name	Sample Date	Declination (°)	Dip Angle (°)	Field Strength (nT)
	HDGM_FILE	5/30/2018	8.28	66.58	52,209.90000000

Design	FINAL				
Audit Notes:					
Version:	1.0	Phase:	ACTUAL	Tie On Depth:	0.00
Vertical Section:	Depth From (TVD) (usft)	+N/-S (usft)	+E/-W (usft)	Direction (°)	
	0.00	0.00	0.00	348.13	

Survey Program	Date	6/21/2018			
From (usft)	To (usft)	Survey (Wellbore)	Tool Name	Description	
72.00	2,087.00	Survey #1 (OH)	VESSI_GYROFLEX	VESSI Gyroflex Gyro	
2,184.00	14,750.00	Survey #2 (OH)	MWD+HDGM	OWSG MWD + HDGM	

Survey									
Measured Depth (usft)	Inclination (°)	Azimuth (°)	Vertical Depth (usft)	+N/-S (usft)	+E/-W (usft)	Vertical Section (usft)	Dogleg Rate (°/100usf)	Build Rate (°/100u)	Formations / Comments
0.00	0.00	0.00	0.00	0.00	0.00	0.00	0.00	0.00	
72.00	0.21	57.33	72.00	0.07	0.11	0.05	0.29	0.29	
121.00	0.38	177.27	121.00	-0.04	0.19	-0.08	1.06	0.35	
153.00	0.56	142.72	153.00	-0.27	0.29	-0.33	1.02	0.56	
184.00	0.99	136.91	184.00	-0.59	0.57	-0.69	1.41	1.39	
215.00	1.45	129.88	214.99	-1.04	1.05	-1.23	1.56	1.48	
247.00	2.34	128.30	246.97	-1.70	1.88	-2.05	2.79	2.78	
278.00	2.28	136.03	277.95	-2.54	2.80	-3.06	1.02	-0.19	
310.00	1.72	165.75	309.93	-3.46	3.36	-4.08	3.62	-1.75	
341.00	1.59	192.05	340.91	-4.33	3.39	-4.94	2.46	-0.42	
373.00	1.88	220.10	372.90	-5.17	2.96	-5.66	2.77	0.91	
436.00	3.82	238.39	435.82	-7.06	0.50	-7.01	3.36	3.08	

Cathedral Energy Services

Survey Report

Company:	Crestone Peak Resources	Local Co-ordinate Reference:	Well DAVIS 1T-9H-G266 - Slot DAVIS 1T-9H
Project:	DJ BASIN	TVD Reference:	23' KB @ 4940.00usft
Site:	S4-T2N-R66W	MD Reference:	23' KB @ 4940.00usft
Well:	DAVIS 1T-9H-G266	North Reference:	True
Wellbore:	OH	Survey Calculation Method:	Minimum Curvature
Design:	FINAL	Database:	USA EDM 5000 Multi Users DB

Survey									
Measured Depth (usft)	Inclination (°)	Azimuth (°)	Vertical Depth (usft)	+N/-S (usft)	+E/-W (usft)	Vertical Section (usft)	Dogleg Rate (°/100usf)	Build Rate (°/100u)	Formations / Comments
472.00	4.60	242.84	471.72	-8.35	-1.80	-7.80	2.35	2.17	
535.00	6.83	244.18	534.41	-11.13	-7.42	-9.37	3.55	3.54	
598.00	8.60	247.40	596.83	-14.57	-15.15	-11.15	2.89	2.81	
692.00	11.11	245.97	689.44	-20.96	-29.91	-14.36	2.68	2.67	
787.00	12.41	239.42	782.45	-29.88	-47.06	-19.57	1.96	1.37	
882.00	13.85	236.54	874.96	-41.35	-65.33	-27.02	1.66	1.52	
976.00	13.03	232.75	966.39	-53.97	-83.16	-35.71	1.28	-0.87	
1,071.00	15.44	232.35	1,058.47	-68.17	-101.70	-45.80	2.54	2.54	
1,165.00	15.38	231.04	1,149.09	-83.66	-121.30	-56.92	0.38	-0.06	
1,259.00	14.41	224.06	1,239.93	-99.90	-139.12	-69.15	2.17	-1.03	
1,353.00	14.85	229.79	1,330.89	-116.08	-156.46	-81.42	1.61	0.47	
1,448.00	15.09	239.06	1,422.68	-130.30	-176.36	-91.24	2.53	0.25	
1,543.00	15.09	241.95	1,514.41	-142.47	-197.88	-98.73	0.79	0.00	
1,637.00	15.43	241.28	1,605.09	-154.24	-219.65	-105.76	0.41	0.36	
1,732.00	15.11	238.27	1,696.74	-166.82	-241.26	-113.63	0.90	-0.34	
1,826.00	14.95	232.55	1,787.53	-180.64	-261.31	-123.03	1.59	-0.17	
1,920.00	14.93	232.12	1,878.35	-195.45	-280.49	-133.57	0.12	-0.02	
2,015.00	13.12	235.61	1,970.52	-209.05	-299.05	-143.07	2.10	-1.91	
2,087.00	11.68	237.87	2,040.84	-217.54	-311.97	-148.72	2.11	-2.00	
2,184.00	10.37	236.79	2,136.04	-227.55	-327.59	-155.30	1.37	-1.35	
2,278.00	10.68	234.59	2,228.46	-237.23	-341.77	-161.86	0.54	0.33	
2,373.00	14.24	233.27	2,321.21	-249.32	-358.31	-170.29	3.76	3.75	
2,467.00	13.18	231.34	2,412.53	-262.93	-375.95	-179.98	1.23	-1.13	
2,562.00	12.48	240.65	2,505.17	-274.73	-393.35	-187.95	2.29	-0.74	
2,656.00	12.52	239.25	2,596.94	-284.92	-410.96	-194.29	0.33	0.04	
2,751.00	13.23	234.15	2,689.55	-296.55	-428.62	-202.04	1.41	0.75	
2,845.00	13.76	238.28	2,780.96	-308.73	-446.85	-210.21	1.17	0.56	
2,940.00	15.34	237.58	2,872.91	-321.40	-467.07	-218.46	1.67	1.66	
3,035.00	14.41	238.19	2,964.73	-334.37	-487.72	-226.90	0.99	-0.98	
3,129.00	13.49	237.84	3,055.95	-346.37	-506.95	-234.69	0.98	-0.98	
3,223.00	15.16	241.00	3,147.03	-358.17	-526.98	-242.12	1.96	1.78	
3,318.00	13.45	241.62	3,239.08	-369.44	-547.57	-248.91	1.81	-1.80	
3,413.00	14.06	244.43	3,331.36	-379.68	-567.70	-254.79	0.95	0.64	
3,507.00	12.04	245.31	3,422.92	-388.70	-586.91	-259.67	2.16	-2.15	
3,602.00	11.16	234.24	3,515.99	-398.21	-603.37	-265.59	2.51	-0.93	
3,696.00	12.00	235.12	3,608.08	-409.12	-618.77	-273.09	0.91	0.89	
3,791.00	11.73	229.49	3,701.05	-421.04	-634.21	-281.58	1.25	-0.28	
3,886.00	13.40	235.82	3,793.78	-433.50	-650.66	-290.39	2.28	1.76	
3,980.00	15.16	233.36	3,884.87	-446.95	-669.54	-299.68	1.98	1.87	
4,074.00	15.47	233.97	3,975.53	-461.66	-689.54	-309.96	0.37	0.33	
4,169.00	17.01	232.57	4,066.74	-477.56	-710.82	-321.14	1.67	1.62	
4,263.00	15.82	232.74	4,156.91	-493.68	-731.94	-332.57	1.27	-1.27	
4,381.00	15.95	231.86	4,270.40	-513.43	-757.49	-346.64	0.23	0.11	
4,476.00	15.56	238.72	4,361.84	-528.11	-778.65	-356.65	2.00	-0.41	
4,570.00	12.79	241.88	4,452.97	-539.56	-798.61	-363.75	3.06	-2.95	
4,665.00	14.63	237.75	4,545.26	-550.92	-818.03	-370.88	2.19	1.94	
4,759.00	14.06	240.48	4,636.33	-562.88	-838.00	-378.47	0.94	-0.61	
4,854.00	14.41	239.86	4,728.42	-574.50	-858.27	-385.68	0.40	0.37	
4,949.00	14.33	236.17	4,820.44	-586.98	-878.26	-393.78	0.97	-0.08	
5,043.00	14.72	238.02	4,911.44	-599.78	-898.05	-402.24	0.64	0.41	
5,138.00	14.15	233.97	5,003.44	-613.01	-917.68	-411.14	1.22	-0.60	
5,232.00	13.01	237.67	5,094.82	-625.42	-935.91	-419.54	1.52	-1.21	
5,326.00	13.89	237.93	5,186.24	-637.07	-954.42	-427.13	0.94	0.94	

Cathedral Energy Services

Survey Report

Company:	Crestone Peak Resources	Local Co-ordinate Reference:	Well DAVIS 1T-9H-G266 - Slot DAVIS 1T-9H
Project:	DJ BASIN	TVD Reference:	23' KB @ 4940.00usft
Site:	S4-T2N-R66W	MD Reference:	23' KB @ 4940.00usft
Well:	DAVIS 1T-9H-G266	North Reference:	True
Wellbore:	OH	Survey Calculation Method:	Minimum Curvature
Design:	FINAL	Database:	USA EDM 5000 Multi Users DB

Survey									
Measured Depth (usft)	Inclination (°)	Azimuth (°)	Vertical Depth (usft)	+N/-S (usft)	+E/-W (usft)	Vertical Section (usft)	Dogleg Rate (°/100usf)	Build Rate (°/100u)	Formations / Comments
5,421.00	12.35	232.13	5,278.76	-649.36	-972.10	-435.53	2.13	-1.62	
5,515.00	11.51	231.16	5,370.73	-661.42	-987.34	-444.19	0.92	-0.89	
5,609.00	12.39	239.86	5,462.70	-672.36	-1,003.37	-451.60	2.13	0.94	
5,703.00	13.14	245.66	5,554.38	-681.83	-1,021.82	-457.07	1.58	0.80	
5,798.00	14.28	241.62	5,646.67	-691.85	-1,041.97	-462.73	1.57	1.20	
5,892.00	16.22	236.87	5,737.36	-704.54	-1,063.17	-470.79	2.45	2.06	
5,987.00	15.25	234.50	5,828.80	-719.05	-1,084.45	-480.61	1.22	-1.02	
6,081.00	14.46	230.02	5,919.66	-733.77	-1,103.51	-491.09	1.48	-0.84	
6,176.00	13.98	229.75	6,011.75	-748.80	-1,121.36	-502.14	0.51	-0.51	
6,270.00	15.60	237.75	6,102.64	-762.88	-1,140.72	-511.94	2.77	1.72	
6,364.00	14.41	230.72	6,193.44	-777.04	-1,160.46	-521.72	2.31	-1.27	
6,459.00	15.03	236.08	6,285.33	-791.39	-1,179.83	-531.79	1.57	0.65	
6,553.00	13.93	236.52	6,376.34	-804.44	-1,199.39	-540.53	1.18	-1.17	
6,585.00	13.18	236.26	6,407.45	-808.59	-1,205.63	-543.31	2.35	-2.34	
6,616.00	12.66	238.28	6,437.66	-812.34	-1,211.46	-545.78	2.22	-1.68	
6,648.00	13.76	253.31	6,468.83	-815.28	-1,218.09	-547.29	11.23	3.44	
6,679.00	14.77	266.49	6,498.88	-816.58	-1,225.57	-547.03	10.94	3.26	
6,711.00	15.82	275.90	6,529.75	-816.38	-1,233.98	-545.10	8.41	3.28	
6,742.00	18.55	285.83	6,559.37	-814.60	-1,242.93	-541.52	12.90	8.81	
6,774.00	20.83	294.53	6,589.50	-810.85	-1,253.01	-535.77	11.59	7.12	
6,821.00	24.17	306.04	6,632.94	-801.71	-1,268.40	-523.67	11.73	7.11	
6,868.00	27.03	318.08	6,675.35	-788.09	-1,283.33	-507.27	12.60	6.09	
6,915.00	28.43	328.28	6,716.98	-770.61	-1,296.36	-487.49	10.52	2.98	
6,962.00	29.49	333.20	6,758.10	-750.77	-1,307.46	-465.78	5.55	2.26	
7,009.00	30.89	339.27	6,798.74	-729.15	-1,316.95	-442.68	7.14	2.98	
7,056.00	33.71	344.28	6,838.47	-705.31	-1,324.75	-417.73	8.27	6.00	
7,103.00	37.22	347.70	6,876.75	-678.85	-1,331.32	-390.50	8.58	7.47	
7,150.00	39.33	347.44	6,913.64	-650.42	-1,337.59	-361.38	4.50	4.49	
7,197.00	42.36	348.93	6,949.19	-620.34	-1,343.87	-330.65	6.77	6.45	
7,245.00	46.10	350.78	6,983.58	-587.39	-1,349.75	-297.19	8.24	7.79	
7,292.00	50.19	352.27	7,014.94	-552.77	-1,354.89	-262.26	9.02	8.70	
7,339.00	52.91	353.68	7,044.16	-516.24	-1,359.38	-225.59	6.25	5.79	
7,386.00	55.33	354.65	7,071.71	-478.36	-1,363.25	-187.72	5.41	5.15	
7,433.00	57.22	354.74	7,097.80	-439.44	-1,366.86	-148.89	4.02	4.02	
7,480.00	59.37	355.79	7,122.50	-399.59	-1,370.16	-109.22	4.95	4.57	
7,528.00	63.50	357.20	7,145.45	-357.52	-1,372.72	-67.52	8.98	8.60	
7,575.00	66.05	358.60	7,165.48	-315.04	-1,374.28	-25.62	6.06	5.43	
7,622.00	65.35	358.51	7,184.82	-272.22	-1,375.36	16.50	1.50	-1.49	
7,669.00	64.25	358.25	7,204.83	-229.71	-1,376.56	58.35	2.39	-2.34	
7,716.00	67.85	356.32	7,223.91	-186.81	-1,378.60	100.75	8.53	7.66	
7,763.00	72.42	355.00	7,239.87	-142.75	-1,381.95	144.56	10.08	9.72	
7,787.31	73.11	355.58	7,247.08	-119.61	-1,383.86	167.60	3.63	2.83	TPZ - 7787.31 (2169 FNL, 2424 FWL)
7,811.00	73.78	356.14	7,253.83	-96.96	-1,385.50	190.10	3.63	2.84	
7,858.00	76.95	357.37	7,265.70	-51.57	-1,388.07	235.05	7.20	6.74	
7,905.00	78.44	359.66	7,275.72	-5.66	-1,389.26	280.22	5.72	3.17	
8,000.00	87.63	359.04	7,287.23	88.53	-1,390.33	372.61	9.70	9.67	
8,094.00	88.99	358.34	7,290.00	182.46	-1,392.48	464.98	1.63	1.45	
8,189.00	88.95	358.16	7,291.71	277.40	-1,395.38	558.49	0.19	-0.04	
8,284.00	88.77	358.51	7,293.60	372.34	-1,398.14	651.96	0.41	-0.19	
8,378.00	90.00	359.48	7,294.60	466.32	-1,399.79	744.27	1.67	1.31	
8,472.00	91.54	359.48	7,293.34	560.30	-1,400.64	836.42	1.64	1.64	
8,566.00	91.76	359.57	7,290.63	654.26	-1,401.42	928.53	0.25	0.23	
8,661.00	91.54	359.48	7,287.90	749.22	-1,402.21	1,021.62	0.25	-0.23	

Cathedral Energy Services

Survey Report

Company:	Crestone Peak Resources	Local Co-ordinate Reference:	Well DAVIS 1T-9H-G266 - Slot DAVIS 1T-9H
Project:	DJ BASIN	TVD Reference:	23' KB @ 4940.00usft
Site:	S4-T2N-R66W	MD Reference:	23' KB @ 4940.00usft
Well:	DAVIS 1T-9H-G266	North Reference:	True
Wellbore:	OH	Survey Calculation Method:	Minimum Curvature
Design:	FINAL	Database:	USA EDM 5000 Multi Users DB

Survey									
Measured Depth (usft)	Inclination (°)	Azimuth (°)	Vertical Depth (usft)	+N/-S (usft)	+E/-W (usft)	Vertical Section (usft)	Dogleg Rate (°/100usf)	Build Rate (°/100u)	Formations / Comments
8,755.00	91.67	359.22	7,285.27	843.17	-1,403.27	1,113.79	0.31	0.14	
8,850.00	92.15	359.22	7,282.10	938.11	-1,404.57	1,206.96	0.51	0.51	
8,945.00	90.97	0.18	7,279.51	1,033.07	-1,405.06	1,299.99	1.60	-1.24	
9,039.00	91.71	0.27	7,277.32	1,127.05	-1,404.69	1,391.88	0.79	0.79	
9,134.00	92.33	0.27	7,273.97	1,221.98	-1,404.25	1,484.70	0.65	0.65	
9,228.00	90.22	0.36	7,271.88	1,315.95	-1,403.73	1,576.55	2.25	-2.24	
9,323.00	90.35	359.92	7,271.40	1,410.95	-1,403.50	1,669.47	0.48	0.14	
9,417.00	90.40	359.39	7,270.79	1,504.95	-1,404.06	1,761.57	0.57	0.05	
9,512.00	91.19	358.95	7,269.47	1,599.93	-1,405.44	1,854.80	0.95	0.83	
9,605.00	91.67	358.95	7,267.15	1,692.88	-1,407.14	1,946.12	0.52	0.52	
9,700.00	90.88	359.83	7,265.04	1,787.85	-1,408.15	2,039.27	1.24	-0.83	
9,794.00	89.43	1.42	7,264.78	1,881.84	-1,407.13	2,131.04	2.29	-1.54	
9,889.00	89.74	1.59	7,265.47	1,976.81	-1,404.63	2,223.46	0.37	0.33	
9,984.00	90.70	0.10	7,265.10	2,071.79	-1,403.23	2,316.12	1.87	1.01	
10,078.00	91.45	0.18	7,263.34	2,165.77	-1,403.00	2,408.05	0.80	0.80	
10,173.00	90.35	359.39	7,261.85	2,260.76	-1,403.36	2,501.08	1.43	-1.16	
10,267.00	90.40	359.92	7,261.23	2,354.76	-1,403.93	2,593.18	0.57	0.05	
10,361.00	90.26	358.69	7,260.69	2,448.75	-1,405.07	2,685.39	1.32	-0.15	
10,456.00	90.26	359.04	7,260.26	2,543.73	-1,406.95	2,778.73	0.37	0.00	
10,550.00	90.97	359.04	7,259.25	2,637.71	-1,408.52	2,871.03	0.76	0.76	
10,613.00	91.06	358.87	7,258.14	2,700.69	-1,409.67	2,932.89	0.31	0.14	
10,707.00	92.02	358.87	7,255.61	2,794.63	-1,411.52	3,025.21	1.02	1.02	
10,802.00	90.40	0.18	7,253.60	2,889.60	-1,412.31	3,118.31	2.19	-1.71	
10,897.00	90.13	0.54	7,253.16	2,984.60	-1,411.71	3,211.16	0.47	-0.28	
10,991.00	89.87	0.36	7,253.16	3,078.60	-1,410.98	3,302.99	0.34	-0.28	
11,085.00	90.31	0.18	7,253.02	3,172.60	-1,410.53	3,394.89	0.51	0.47	
11,180.00	89.74	359.22	7,252.98	3,267.59	-1,411.03	3,487.96	1.18	-0.60	
11,274.00	89.69	358.95	7,253.44	3,361.58	-1,412.53	3,580.24	0.29	-0.05	
11,368.00	89.47	359.31	7,254.13	3,455.57	-1,413.96	3,672.51	0.45	-0.23	
11,463.00	89.34	359.83	7,255.12	3,550.56	-1,414.67	3,765.62	0.56	-0.14	
11,557.00	89.17	359.66	7,256.34	3,644.55	-1,415.09	3,857.69	0.26	-0.18	
11,651.00	89.69	0.10	7,257.28	3,738.54	-1,415.29	3,949.71	0.72	0.55	
11,745.00	89.69	358.69	7,257.78	3,832.53	-1,416.28	4,041.90	1.50	0.00	
11,839.00	90.04	358.69	7,258.01	3,926.51	-1,418.43	4,134.31	0.37	0.37	
11,933.00	90.40	358.43	7,257.64	4,020.48	-1,420.79	4,226.75	0.47	0.38	
12,028.00	91.10	357.46	7,256.40	4,115.41	-1,424.20	4,320.35	1.26	0.74	
12,122.00	90.88	358.16	7,254.78	4,209.32	-1,427.79	4,413.00	0.78	-0.23	
12,216.00	90.53	358.78	7,253.62	4,303.28	-1,430.30	4,505.47	0.76	-0.37	
12,311.00	89.21	358.87	7,253.84	4,398.26	-1,432.25	4,598.81	1.39	-1.39	
12,405.00	88.73	0.54	7,255.53	4,492.24	-1,432.73	4,690.88	1.85	-0.51	
12,500.00	89.17	0.45	7,257.27	4,587.22	-1,431.91	4,783.66	0.47	0.46	
12,594.00	89.69	0.27	7,258.20	4,681.21	-1,431.32	4,875.53	0.59	0.55	
12,689.00	90.62	0.27	7,257.94	4,776.21	-1,430.87	4,968.40	0.98	0.98	
12,783.00	89.47	0.71	7,257.87	4,870.21	-1,430.07	5,060.22	1.31	-1.22	
12,878.00	89.43	359.83	7,258.78	4,965.20	-1,429.62	5,153.09	0.93	-0.04	
12,972.00	89.78	359.75	7,259.43	5,059.20	-1,429.96	5,245.15	0.38	0.37	
13,066.00	90.18	359.66	7,259.46	5,153.20	-1,430.45	5,337.24	0.44	0.43	
13,161.00	90.26	358.95	7,259.10	5,248.19	-1,431.60	5,430.43	0.75	0.08	
13,255.00	89.47	359.13	7,259.32	5,342.17	-1,433.18	5,522.73	0.86	-0.84	
13,350.00	89.91	358.95	7,259.83	5,437.16	-1,434.77	5,616.01	0.50	0.46	
13,444.00	90.40	359.13	7,259.58	5,531.14	-1,436.34	5,708.31	0.56	0.52	
13,539.00	90.92	0.01	7,258.49	5,626.13	-1,437.05	5,801.42	1.08	0.55	
13,633.00	90.26	359.83	7,257.52	5,720.13	-1,437.19	5,893.43	0.73	-0.70	

Cathedral Energy Services

Survey Report

Company:	Crestone Peak Resources	Local Co-ordinate Reference:	Well DAVIS 1T-9H-G266 - Slot DAVIS 1T-9H
Project:	DJ BASIN	TVD Reference:	23' KB @ 4940.00usft
Site:	S4-T2N-R66W	MD Reference:	23' KB @ 4940.00usft
Well:	DAVIS 1T-9H-G266	North Reference:	True
Wellbore:	OH	Survey Calculation Method:	Minimum Curvature
Design:	FINAL	Database:	USA EDM 5000 Multi Users DB

Survey									
Measured Depth (usft)	Inclination (°)	Azimuth (°)	Vertical Depth (usft)	+N/-S (usft)	+E/-W (usft)	Vertical Section (usft)	Dogleg Rate (°/100usf)	Build Rate (°/100u)	Formations / Comments
13,728.00	89.39	0.98	7,257.81	5,815.12	-1,436.51	5,986.26	1.52	-0.92	
13,822.00	89.96	1.06	7,258.34	5,909.11	-1,434.84	6,077.89	0.61	0.61	
13,917.00	90.79	0.27	7,257.72	6,004.10	-1,433.74	6,170.62	1.21	0.87	
14,012.00	90.09	358.95	7,256.99	6,099.09	-1,434.39	6,263.71	1.57	-0.74	
14,106.00	90.97	358.87	7,256.12	6,193.07	-1,436.17	6,356.05	0.94	0.94	
14,200.00	90.22	358.43	7,255.14	6,287.03	-1,438.39	6,448.46	0.93	-0.80	
14,295.00	89.43	359.75	7,255.43	6,382.02	-1,439.90	6,541.73	1.62	-0.83	
14,389.00	90.44	0.54	7,255.54	6,476.02	-1,439.66	6,633.67	1.36	1.07	
14,484.00	89.30	1.85	7,255.76	6,570.99	-1,437.68	6,726.20	1.83	-1.20	
14,578.00	89.17	1.15	7,257.01	6,664.95	-1,435.22	6,817.65	0.76	-0.14	
14,673.00	90.40	1.59	7,257.37	6,759.92	-1,432.95	6,910.12	1.38	1.29	
14,684.00	90.75	1.59	7,257.26	6,770.92	-1,432.64	6,920.82	3.18	3.18	LAST SURVEY - 14684.00' MD
14,750.00	90.75	1.59	7,256.39	6,836.89	-1,430.81	6,985.00	0.00	0.00	PTB - 14750.00' MD (465 FNL, 2359 FWL)

Targets									
Target Name	Dip Angle (°)	Dip Dir. (°)	TVD (usft)	+N/-S (usft)	+E/-W (usft)	Northing (usft)	Easting (usft)	Latitude	Longitude
DAVIS 1T (-120') VS	0.00	0.00	7,295.00	-415.10	-1,391.54	1,299,413.97	3,200,403.49	40.153062	-104.783049
- hit/miss target									
- actual wellpath misses target center by 160.67usft at 7540.32usft MD (7150.88 TVD, -346.48 N, -1373.23 E)									
- Point									
DAVIS 1T 3335' VS	0.00	0.00	7,252.00	3,109.23	-1,420.85	1,302,937.94	3,200,345.50	40.162737	-104.783154
- actual wellpath misses target center by 10.12usft at 11021.59usft MD (7253.20 TVD, 3109.19 N, -1410.80 E)									
- Point									
DAVIS 1T-9H-G266 BHL	0.00	0.00	7,265.00	6,841.85	-1,438.02	1,306,670.30	3,200,297.94	40.172983	-104.783216
- actual wellpath misses target center by 12.28usft at 14750.00usft MD (7256.39 TVD, 6836.89 N, -1430.81 E)									
- Point									
DAVIS 1T-9H-G266 TPZ	0.00	0.00	7,295.00	-119.61	-1,405.99	1,299,709.33	3,200,386.64	40.153873	-104.783100
- actual wellpath misses target center by 50.51usft at 7802.50usft MD (7251.43 TVD, -105.10 N, -1384.94 E)									
- Point									
DAVIS 1T 2017' VS	0.00	0.00	7,269.00	1,763.74	-1,414.65	1,301,592.54	3,200,362.64	40.159043	-104.783132
- actual wellpath misses target center by 7.51usft at 9675.87usft MD (7265.45 TVD, 1763.73 N, -1408.04 E)									
- Point									

Design Annotations					
Measured Depth (usft)	Vertical Depth (usft)	Local Coordinates		Comment	
		+N/-S (usft)	+E/-W (usft)		
7,787.31	7,247.08	-119.61	-1,383.86	TPZ - 7787.31 (2169 FNL, 2424 FWL)	
14,684.00	7,257.26	6,770.92	-1,432.64	LAST SURVEY - 14684.00' MD	
14,750.00	7,256.39	6,836.89	-1,430.81	PTB - 14750.00' MD (465 FNL, 2359 FWL)	

Checked By: _____ Approved By: _____ Date: _____