

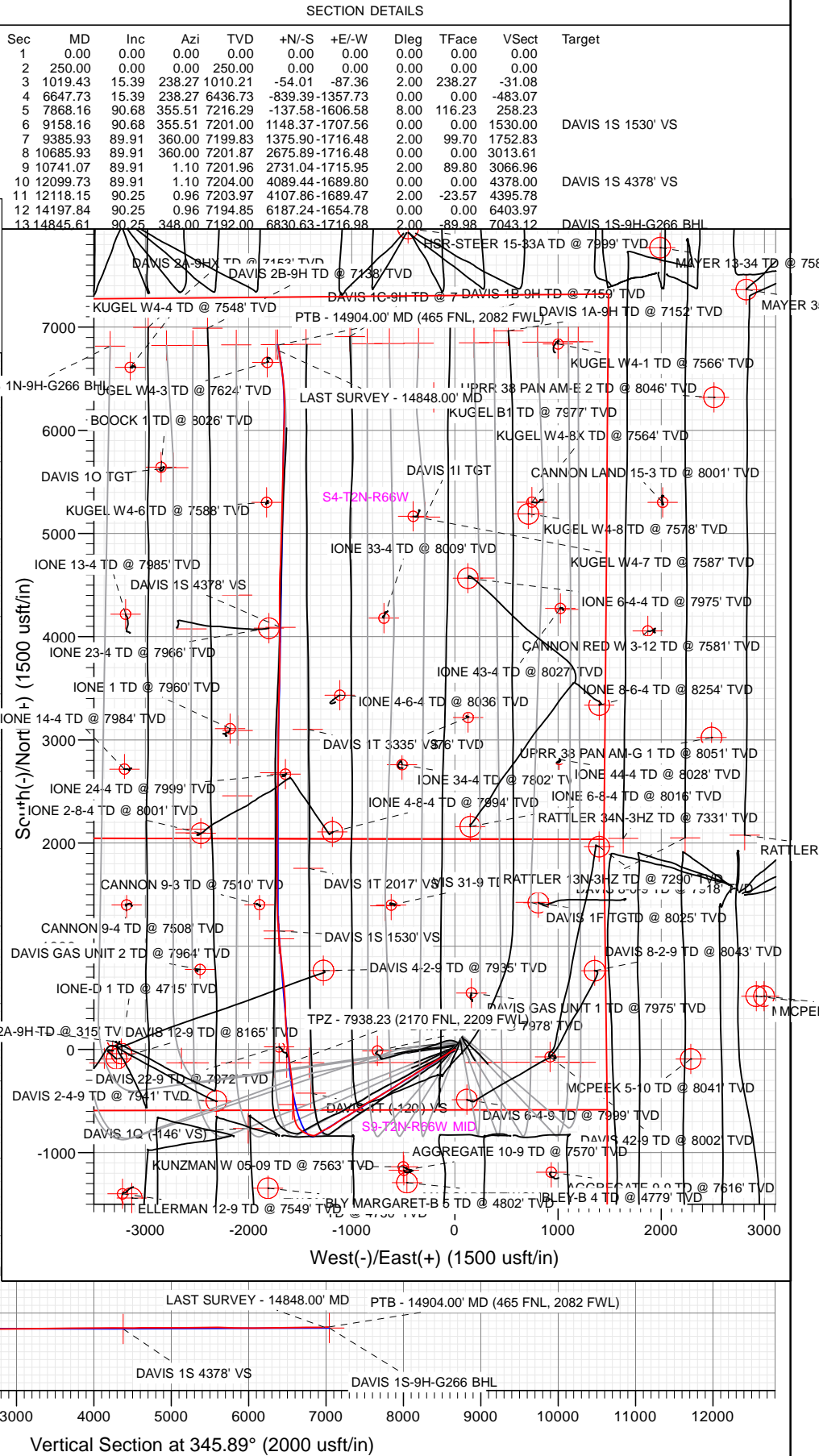
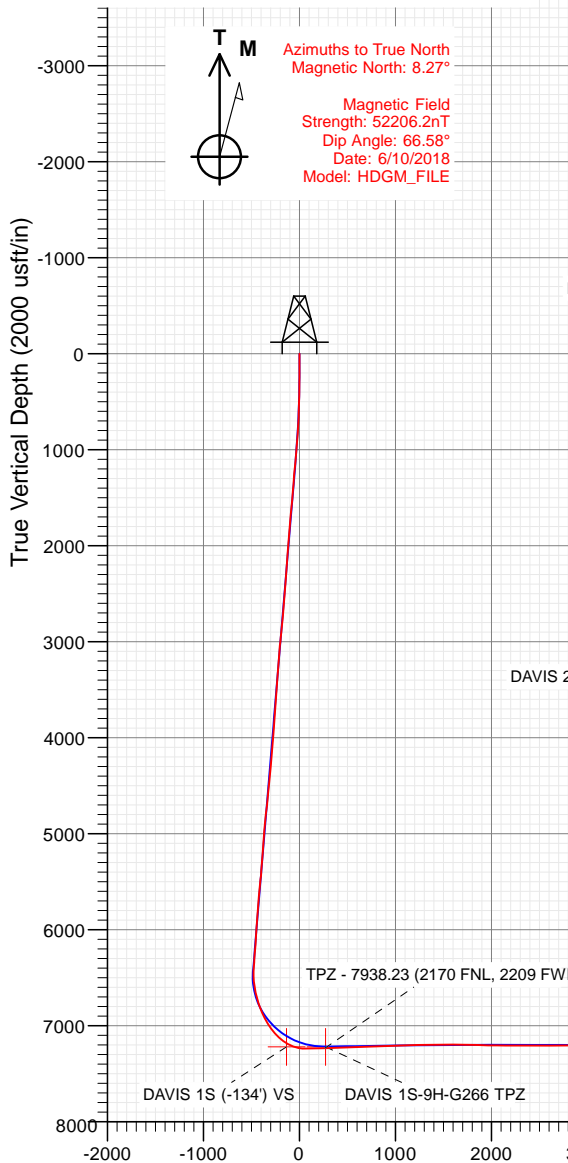


CRESTONE PEAK
RESOURCES

FINAL
DAVIS 1S-9H-G266
370437 185105 384837 185158
23 KB @ 4940.00usft
Ground Level @ 4917.00
North American Datum 1983
Well DAVIS 1S-9H-G266 - Slot DAVIS 1S-9H, True North

Type	Target	No Target (Freehand)	Azimuth	Origin Type	Slot	N/S	E/W	From TVD
Name	TVD	+N/-S	+E/-W	Latitude	Longitude			
DAVIS 1S TGT	7182.00	1072.94	-1703.70	40.157171	-104.784148			
DAVIS 1S-9H-G266 BHL	7182.00	6830.63	-1716.98	40.172076	-104.784197			
DAVIS 1S 1530' VS	7201.00	1148.37	-1707.56	40.157378	-104.784162			
DAVIS 1S 4378' VS	7204.00	4089.44	-1689.90	40.165451	-104.784099			
DAVIS 1S (-134) VS	7221.00	-534.15	-1575.44	40.152759	-104.783689			
DAVIS 1S-9H-G266 TPZ	7221.00	-128.56	-1630.23	40.153872	-104.783885			

Project: DJ BASIN
Site: S4-T2N-R66W
Well: DAVIS 1S-9H-G266
Wellbore: OH
Design: FINAL



CATHEDRAL

WELL DETAILS: DAVIS 1S-9H-G266

+N/-S	+E/-W	Northing	Easting	Latitude	Longitude
0.00	0.00	1299849.10	3201796.50	40.154225	-104.778053





Well DAVIS 1S-9H-G266 - Slot DAVIS 1S-9H, True North

Type User	Target No Target (Freehand)	Azimuth 345.9	Origin Type Slat	N/S	E/W	From TVO
Name	TVO	+N=S	+E=W	Latitude	Longitude	
DAVIS IS TGT	7192.00	1072.94	-1703.70	0.15711	-104.78448	
DAVIS IS-9H-G266 BHL	7192.00	6850.03	-1716.98	0.12976	-104.784197	
DAVIS IS 1530 VS	7201.00	1148.37	-1706.96	0.157378	-104.784162	
DAVIS IS 4376 VS	7204.00	4089.44	-1699.80	0.165451	-104.78409	
DAVIS IS 1541 VS	7221.00	534.18	-1676.44	0.12769	-104.78369	
DAVIS IS-9H-G266 TPZ	7221.00	-128.56	-1630.23	0.153872	-104.78389	

True Vertical Depth (200 usft/in)

6200

6300

6400

6500

6600

6700

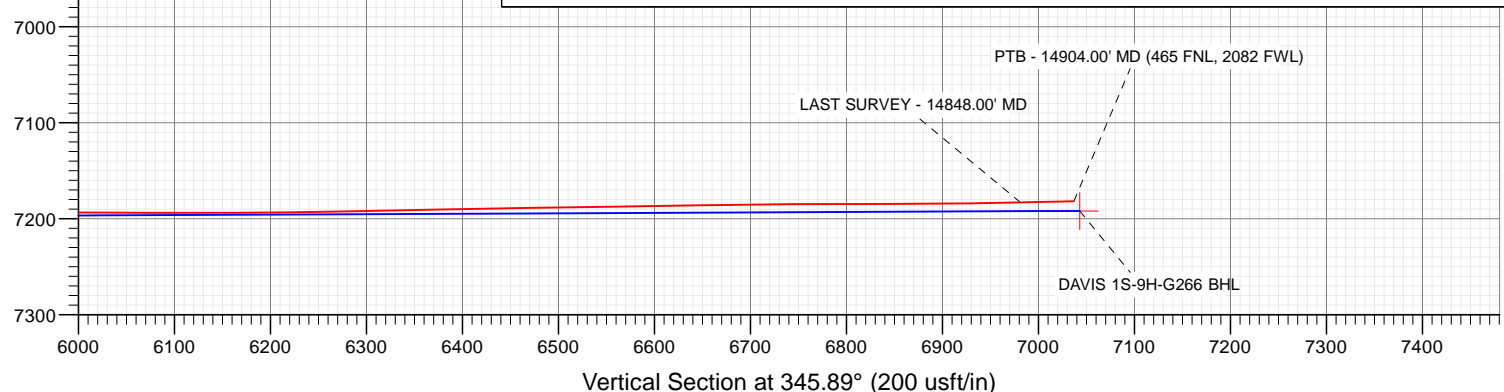
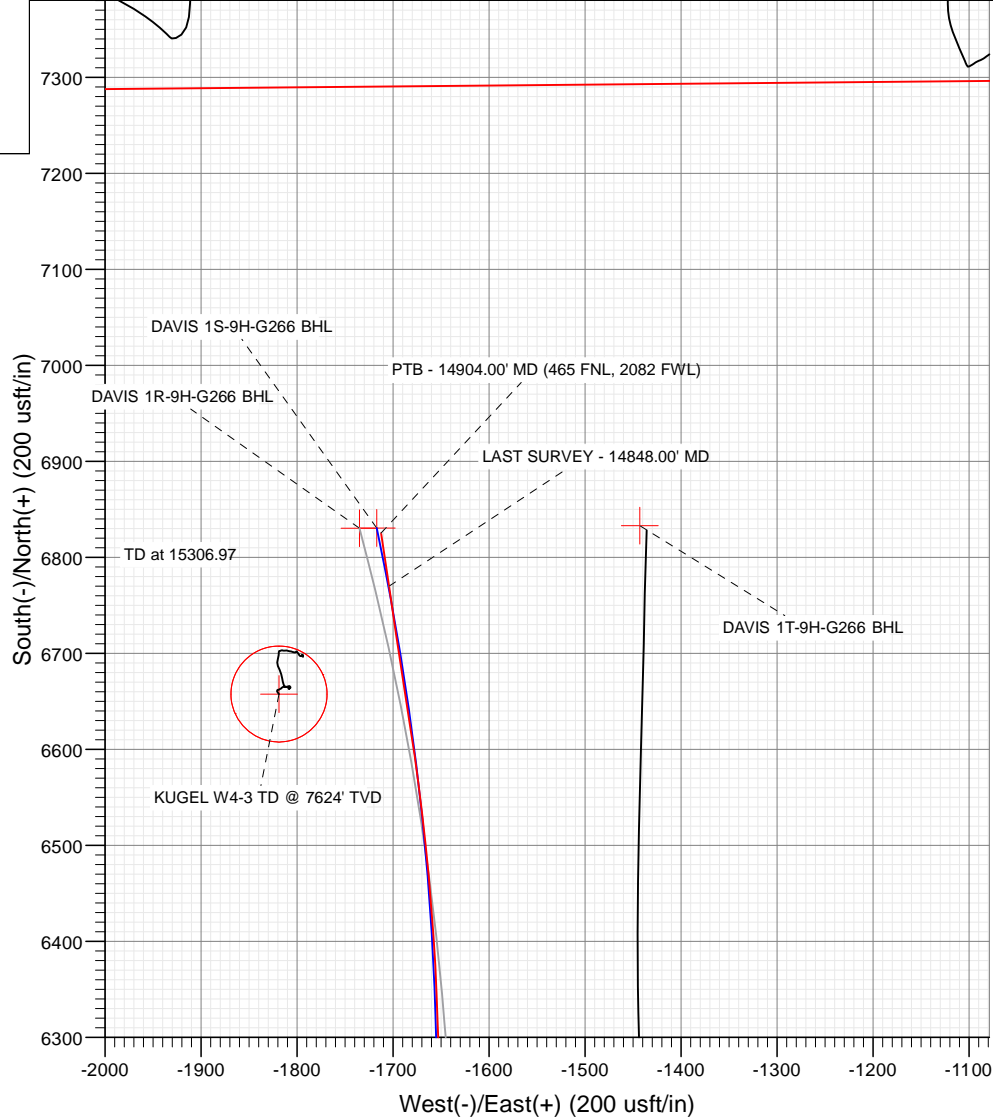
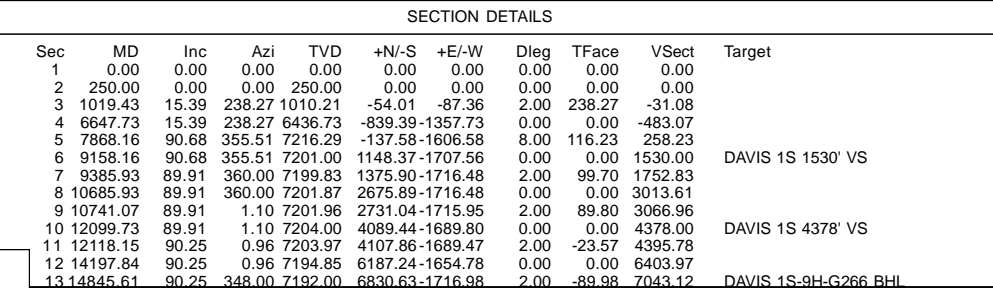
6800

6900

T **M**

Azimuths to True North
Magnetic North: 8.27°

Magnetic Field
Strength: 52206.2nT
Dip Angle: 66.58°
Date: 6/10/2018
Model: HDGM_FILE



CATHEDRAL

WELL DETAILS: DAVIS 1S-9H-G266

4917.00					
+N/-S	+E/-W	Northing	Easting	Latitude	Longitude
0.00	0.00	1299849.10	3201796.50	40.154225	-104.778053



Cathedral Energy Services

Survey Report

Company:	Crestone Peak Resources	Local Co-ordinate Reference:	Well DAVIS 1S-9H-G266 - Slot DAVIS 1S-9H
Project:	DJ BASIN	TVD Reference:	23' KB @ 4940.00usft
Site:	S4-T2N-R66W	MD Reference:	23' KB @ 4940.00usft
Well:	DAVIS 1S-9H-G266	North Reference:	True
Wellbore:	OH	Survey Calculation Method:	Minimum Curvature
Design:	FINAL	Database:	USA EDM 5000 Multi Users DB

Project	DJ BASIN		
Map System:	US State Plane 1983	System Datum:	Mean Sea Level
Geo Datum:	North American Datum 1983		
Map Zone:	Colorado Northern Zone		

Site		S4-T2N-R66W			
Site Position:		Northing:	1,300,048.95 usft	Latitude:	40.154783
From:	Map	Easting:	3,201,389.75 usft	Longitude:	-104.779502
Position Uncertainty:	0.00 usft	Slot Radius:	13-3/16 "	Grid Convergence:	0.47 °

Well	DAVIS 1S-9H-G266 - Slot DAVIS 1S-9H					
Well Position	+N/-S	0.00 usft	Northing:	1,299,849.10 usft	Latitude:	40.154225
	+E/-W	0.00 usft	Easting:	3,201,796.50 usft	Longitude:	-104.778053
Position Uncertainty		0.00 usft	Wellhead Elevation:	usft	Ground Level:	4,917.00 usft

Wellbore	OH				
Magnetics	Model Name	Sample Date	Declination (°)	Dip Angle (°)	Field Strength (nT)
	HDGM_FILE	6/10/2018	8.27	66.58	52,206.20000000

Design	FINAL				
Audit Notes:					
Version:	1.0	Phase:	ACTUAL	Tie On Depth:	0.00
Vertical Section:	Depth From (TVD) (usft)	+N/-S (usft)	+E/-W (usft)	Direction (°)	
	0.00	0.00	0.00	345.89	

Survey Program	Date	6/21/2018			
From (usft)	To (usft)	Survey (Wellbore)	Tool Name	Description	
90.00	2,132.00	Survey #1 (OH)	VESSI_GYROFLEX	VESSI Gyroflex Gyro	
2,278.00	14,904.00	Survey #2 (OH)	MWD+HDGM	OWSG MWD + HDGM	

Survey									
Measured Depth (usft)	Inclination (°)	Azimuth (°)	Vertical Depth (usft)	+N/-S (usft)	+E/-W (usft)	Vertical Section (usft)	Dogleg Rate (°/100usf)	Build Rate (°/100u)	Formations / Comments
0.00	0.00	0.00	0.00	0.00	0.00	0.00	0.00	0.00	
90.00	0.27	269.43	90.00	0.00	-0.21	0.05	0.30	0.30	
121.00	0.35	302.14	121.00	0.05	-0.37	0.14	0.62	0.26	
153.00	0.32	296.51	153.00	0.14	-0.53	0.26	0.14	-0.09	
184.00	0.21	283.85	184.00	0.19	-0.66	0.35	0.40	-0.35	
216.00	0.51	250.96	216.00	0.16	-0.85	0.36	1.10	0.94	
248.00	1.59	244.72	247.99	-0.08	-1.39	0.26	3.39	3.37	
279.00	2.28	243.66	278.97	-0.53	-2.33	0.05	2.23	2.23	
311.00	2.82	244.37	310.94	-1.16	-3.61	-0.24	1.69	1.69	
342.00	2.96	244.19	341.90	-1.84	-5.02	-0.56	0.45	0.45	
437.00	4.11	243.49	436.72	-4.42	-10.27	-1.79	1.21	1.21	
531.00	5.53	241.91	530.39	-8.06	-17.28	-3.60	1.52	1.51	

Cathedral Energy Services

Survey Report

Company:	Crestone Peak Resources	Local Co-ordinate Reference:	Well DAVIS 1S-9H-G266 - Slot DAVIS 1S-9H
Project:	DJ BASIN	TVD Reference:	23' KB @ 4940.00usft
Site:	S4-T2N-R66W	MD Reference:	23' KB @ 4940.00usft
Well:	DAVIS 1S-9H-G266	North Reference:	True
Wellbore:	OH	Survey Calculation Method:	Minimum Curvature
Design:	FINAL	Database:	USA EDM 5000 Multi Users DB

Survey									
Measured Depth (usft)	Inclination (°)	Azimuth (°)	Vertical Depth (usft)	+N/-S (usft)	+E/-W (usft)	Vertical Section (usft)	Dogleg Rate (°/100usf)	Build Rate (°/100u)	Formations / Comments
625.00	7.34	242.78	623.79	-12.94	-26.62	-6.06	1.93	1.93	
720.00	9.91	240.15	717.71	-19.78	-39.11	-9.65	2.74	2.71	
814.00	11.61	235.31	810.05	-29.19	-53.90	-15.17	2.05	1.81	
909.00	13.38	237.33	902.80	-40.57	-71.02	-22.03	1.92	1.86	
1,003.00	15.07	236.45	993.91	-53.20	-90.36	-29.56	1.81	1.80	
1,098.00	15.13	235.75	1,085.63	-67.00	-110.90	-37.94	0.20	0.06	
1,165.00	15.35	236.11	1,150.28	-76.86	-125.49	-43.95	0.36	0.33	
1,287.00	15.61	239.53	1,267.86	-94.19	-153.04	-54.04	0.78	0.21	
1,382.00	15.99	238.56	1,359.27	-107.50	-175.22	-61.54	0.49	0.40	
1,449.00	16.63	241.52	1,423.57	-116.88	-191.52	-66.67	1.57	0.96	
1,544.00	17.13	239.59	1,514.48	-130.45	-215.54	-73.97	0.79	0.53	
1,638.00	17.95	238.45	1,604.11	-145.04	-239.82	-82.20	0.95	0.87	
1,732.00	16.99	240.52	1,693.77	-159.37	-264.12	-90.18	1.22	-1.02	
1,826.00	14.94	237.66	1,784.14	-172.62	-286.32	-97.61	2.34	-2.18	
1,920.00	14.57	234.35	1,875.04	-185.99	-306.16	-105.74	0.98	-0.39	
2,015.00	14.12	238.33	1,967.08	-199.04	-325.73	-113.62	1.14	-0.47	
2,110.00	14.78	239.50	2,059.08	-211.27	-346.04	-120.54	0.76	0.69	
2,132.00	14.93	240.57	2,080.34	-214.09	-350.92	-122.08	1.42	0.68	
2,278.00	13.01	237.67	2,222.02	-232.12	-381.19	-132.19	1.40	-1.32	
2,372.00	13.98	233.62	2,313.43	-244.51	-399.28	-139.80	1.44	1.03	
2,467.00	12.48	234.50	2,405.90	-257.28	-416.87	-147.89	1.59	-1.58	
2,561.00	13.05	241.62	2,497.58	-268.23	-434.48	-154.21	1.78	0.61	
2,656.00	14.68	244.43	2,589.81	-278.52	-454.78	-159.25	1.86	1.72	
2,751.00	15.29	240.30	2,681.59	-289.92	-476.52	-165.01	1.29	0.64	
2,845.00	16.74	234.41	2,771.94	-303.94	-498.29	-173.30	2.32	1.54	
2,939.00	16.04	233.62	2,862.12	-319.52	-519.76	-183.18	0.78	-0.74	
3,034.00	17.53	235.73	2,953.07	-335.37	-542.15	-193.08	1.69	1.57	
3,128.00	16.08	235.73	3,043.05	-350.67	-564.61	-202.45	1.54	-1.54	
3,223.00	13.98	235.47	3,134.80	-364.58	-584.94	-210.99	2.21	-2.21	
3,318.00	14.94	240.92	3,226.79	-377.04	-605.09	-218.15	1.75	1.01	
3,413.00	15.56	238.28	3,318.45	-389.69	-626.63	-225.17	0.98	0.65	
3,507.00	11.87	240.21	3,409.75	-401.13	-645.75	-231.60	3.96	-3.93	
3,602.00	12.00	240.21	3,502.70	-410.89	-662.80	-236.91	0.14	0.14	
3,696.00	13.67	242.50	3,594.35	-420.87	-681.14	-242.12	1.86	1.78	
3,790.00	15.29	239.25	3,685.36	-432.34	-701.65	-248.25	1.93	1.72	
3,885.00	15.82	237.93	3,776.88	-445.62	-723.38	-255.83	0.67	0.56	
3,980.00	15.86	239.42	3,868.27	-459.10	-745.53	-263.50	0.43	0.04	
4,074.00	16.26	237.75	3,958.61	-472.66	-767.72	-271.24	0.65	0.43	
4,168.00	15.95	244.26	4,048.92	-485.29	-790.49	-277.94	1.95	-0.33	
4,263.00	17.75	241.62	4,139.84	-497.84	-814.99	-284.14	2.06	1.89	
4,380.00	16.79	236.43	4,251.57	-515.66	-844.76	-294.17	1.55	-0.82	
4,475.00	15.78	235.29	4,342.76	-530.61	-866.81	-303.28	1.12	-1.06	
4,569.00	15.65	237.49	4,433.25	-544.70	-888.01	-311.78	0.65	-0.14	
4,664.00	17.14	238.46	4,524.38	-558.91	-910.75	-320.02	1.59	1.57	
4,758.00	16.26	237.93	4,614.42	-573.14	-933.71	-328.23	0.95	-0.94	
4,853.00	15.95	232.57	4,705.69	-588.14	-955.34	-337.50	1.60	-0.33	
4,947.00	16.92	232.74	4,795.85	-604.27	-976.49	-347.99	1.03	1.03	
5,042.00	17.10	236.52	4,886.70	-620.35	-999.14	-358.05	1.18	0.19	
5,136.00	16.08	242.06	4,976.79	-634.07	-1,022.17	-365.75	2.00	-1.09	
5,231.00	14.85	240.04	5,068.35	-646.31	-1,044.34	-372.22	1.41	-1.29	
5,325.00	14.37	238.72	5,159.31	-658.39	-1,064.75	-378.95	0.62	-0.51	
5,419.00	13.89	239.86	5,250.47	-670.11	-1,084.47	-385.51	0.59	-0.51	
5,514.00	13.45	236.17	5,342.78	-681.99	-1,103.51	-392.39	1.03	-0.46	

Cathedral Energy Services

Survey Report

Company:	Crestone Peak Resources	Local Co-ordinate Reference:	Well DAVIS 1S-9H-G266 - Slot DAVIS 1S-9H
Project:	DJ BASIN	TVD Reference:	23' KB @ 4940.00usft
Site:	S4-T2N-R66W	MD Reference:	23' KB @ 4940.00usft
Well:	DAVIS 1S-9H-G266	North Reference:	True
Wellbore:	OH	Survey Calculation Method:	Minimum Curvature
Design:	FINAL	Database:	USA EDM 5000 Multi Users DB

Survey									
Measured Depth (usft)	Inclination (°)	Azimuth (°)	Vertical Depth (usft)	+N/-S (usft)	+E/-W (usft)	Vertical Section (usft)	Dogleg Rate (°/100usf)	Build Rate (°/100u)	Formations / Comments
5,608.00	14.81	237.23	5,433.93	-694.57	-1,122.69	-399.92	1.47	1.45	
5,702.00	16.57	234.06	5,524.43	-708.95	-1,143.65	-408.75	2.08	1.87	
5,797.00	15.16	237.14	5,615.81	-723.64	-1,165.05	-417.78	1.73	-1.48	
5,891.00	15.60	237.58	5,706.44	-737.08	-1,186.05	-425.71	0.48	0.47	
5,985.00	15.47	235.82	5,797.01	-750.90	-1,207.09	-433.98	0.52	-0.14	
6,080.00	14.19	244.08	5,888.85	-763.11	-1,228.05	-440.71	2.60	-1.35	
6,174.00	14.68	247.68	5,979.89	-772.67	-1,249.43	-444.77	1.09	0.52	
6,268.00	15.07	240.21	6,070.74	-783.27	-1,271.05	-449.77	2.08	0.41	
6,363.00	15.82	239.42	6,162.31	-795.99	-1,292.92	-456.78	0.82	0.79	
6,457.00	16.00	236.61	6,252.71	-809.64	-1,314.77	-464.69	0.84	0.19	
6,552.00	14.85	241.88	6,344.29	-822.58	-1,336.44	-471.96	1.91	-1.21	
6,647.00	12.22	245.31	6,436.65	-832.52	-1,356.31	-476.76	2.89	-2.77	
6,694.00	13.54	264.47	6,482.49	-835.13	-1,366.31	-476.85	9.46	2.81	
6,741.00	13.84	280.47	6,528.17	-834.64	-1,377.32	-473.69	8.06	0.64	
6,788.00	16.44	284.69	6,573.53	-831.93	-1,389.29	-468.15	6.00	5.53	
6,835.00	19.25	286.00	6,618.27	-828.11	-1,403.17	-461.05	6.04	5.98	
6,882.00	20.79	288.38	6,662.43	-823.34	-1,418.53	-452.69	3.71	3.28	
6,929.00	22.24	292.07	6,706.15	-817.37	-1,434.69	-442.95	4.22	3.09	
6,976.00	24.48	295.94	6,749.30	-809.77	-1,451.70	-431.44	5.77	4.77	
7,024.00	26.94	302.18	6,792.55	-799.62	-1,469.85	-417.17	7.61	5.12	
7,071.00	26.90	307.89	6,834.47	-787.42	-1,487.25	-401.09	5.50	-0.09	
7,118.00	27.25	314.31	6,876.33	-773.37	-1,503.35	-383.55	6.26	0.74	
7,159.00	29.27	321.34	6,912.45	-758.98	-1,516.33	-366.43	9.49	4.93	
7,206.00	31.64	328.72	6,952.97	-739.47	-1,529.92	-344.19	9.41	5.04	
7,253.00	34.19	337.07	6,992.45	-716.75	-1,541.47	-319.34	11.06	5.43	
7,300.00	37.40	345.16	7,030.59	-690.77	-1,550.28	-292.00	12.15	6.83	
7,347.00	40.08	352.01	7,067.26	-661.97	-1,556.04	-262.66	10.75	5.70	
7,395.00	44.52	355.00	7,102.76	-629.89	-1,559.66	-230.66	10.15	9.25	
7,442.00	48.34	355.79	7,135.14	-595.95	-1,562.38	-197.08	8.22	8.13	
7,489.00	53.44	357.02	7,164.78	-559.56	-1,564.66	-161.24	11.04	10.85	
7,536.00	59.46	357.55	7,190.75	-520.46	-1,566.50	-122.86	12.84	12.81	
7,583.00	67.37	356.67	7,211.76	-478.51	-1,568.63	-81.67	16.91	16.83	
7,630.00	74.66	357.20	7,227.04	-434.16	-1,571.00	-38.08	15.55	15.51	
7,663.00	80.46	357.02	7,234.15	-401.99	-1,572.63	-6.48	17.58	17.58	
7,683.00	84.16	356.49	7,236.83	-382.21	-1,573.75	12.98	18.69	18.50	
7,720.00	89.87	354.74	7,238.75	-345.38	-1,576.57	49.38	16.14	15.43	
7,777.00	91.10	353.86	7,238.27	-288.67	-1,582.24	105.76	2.65	2.16	
7,872.00	90.79	353.24	7,236.70	-194.28	-1,592.91	199.90	0.73	-0.33	
7,938.23	91.59	352.81	7,235.33	-128.56	-1,600.95	265.61	1.38	1.21	TPZ - 7938.23 (2170 FNL, 2209 FWL)
7,966.00	91.93	352.63	7,234.47	-101.03	-1,604.46	293.17	1.38	1.21	
8,061.00	91.14	352.98	7,231.93	-6.81	-1,616.36	387.44	0.91	-0.83	
8,156.00	93.25	354.12	7,228.29	87.51	-1,627.02	481.52	2.52	2.22	
8,250.00	93.69	356.14	7,222.60	181.00	-1,634.99	574.12	2.20	0.47	
8,345.00	91.67	357.81	7,218.16	275.75	-1,639.99	667.24	2.76	-2.13	
8,438.00	91.14	359.04	7,215.88	368.69	-1,642.55	757.99	1.44	-0.57	
8,533.00	91.36	356.76	7,213.80	463.60	-1,646.03	850.88	2.41	0.23	
8,627.00	91.10	355.88	7,211.79	557.38	-1,652.06	943.31	0.98	-0.28	
8,722.00	92.24	354.47	7,209.02	652.00	-1,660.05	1,037.02	1.91	1.20	
8,817.00	92.33	354.03	7,205.23	746.45	-1,669.56	1,130.94	0.47	0.09	
8,912.00	91.89	353.94	7,201.73	840.86	-1,679.51	1,224.93	0.47	-0.46	
9,006.00	90.57	354.21	7,199.71	934.33	-1,689.21	1,317.94	1.43	-1.40	
9,101.00	91.10	353.86	7,198.33	1,028.81	-1,699.08	1,411.98	0.67	0.56	
9,195.00	90.13	355.09	7,197.32	1,122.36	-1,708.13	1,504.91	1.67	-1.03	

Cathedral Energy Services

Survey Report

Company:	Crestone Peak Resources	Local Co-ordinate Reference:	Well DAVIS 1S-9H-G266 - Slot DAVIS 1S-9H
Project:	DJ BASIN	TVD Reference:	23' KB @ 4940.00usft
Site:	S4-T2N-R66W	MD Reference:	23' KB @ 4940.00usft
Well:	DAVIS 1S-9H-G266	North Reference:	True
Wellbore:	OH	Survey Calculation Method:	Minimum Curvature
Design:	FINAL	Database:	USA EDM 5000 Multi Users DB

Survey									
Measured Depth (usft)	Inclination (°)	Azimuth (°)	Vertical Depth (usft)	+N/-S (usft)	+E/-W (usft)	Vertical Section (usft)	Dogleg Rate (°/100usf)	Build Rate (°/100u)	Formations / Comments
9,290.00	89.34	356.14	7,197.76	1,217.08	-1,715.39	1,598.55	1.38	-0.83	
9,384.00	88.95	357.37	7,199.16	1,310.92	-1,720.71	1,690.85	1.37	-0.41	
9,478.00	89.56	359.57	7,200.38	1,404.87	-1,723.22	1,782.58	2.43	0.65	
9,572.00	88.51	359.66	7,201.97	1,498.85	-1,723.85	1,873.88	1.12	-1.12	
9,666.00	88.64	359.57	7,204.31	1,592.82	-1,724.48	1,965.17	0.17	0.14	
9,761.00	89.52	0.62	7,205.83	1,687.81	-1,724.33	2,057.25	1.44	0.93	
9,856.00	89.34	359.92	7,206.78	1,782.80	-1,723.88	2,149.27	0.76	-0.19	
9,951.00	89.87	359.57	7,207.43	1,877.80	-1,724.30	2,241.50	0.67	0.56	
10,045.00	89.87	0.62	7,207.64	1,971.80	-1,724.14	2,332.63	1.12	0.00	
10,140.00	90.48	0.89	7,207.35	2,066.79	-1,722.89	2,424.44	0.70	0.64	
10,234.00	90.22	0.10	7,206.78	2,160.78	-1,722.08	2,515.40	0.88	-0.28	
10,328.00	90.18	0.10	7,206.45	2,254.78	-1,721.92	2,606.53	0.04	-0.04	
10,422.00	89.56	359.22	7,206.67	2,348.78	-1,722.47	2,697.82	1.15	-0.66	
10,517.00	90.97	1.94	7,206.23	2,443.76	-1,721.51	2,789.71	3.22	1.48	
10,611.00	91.63	3.08	7,204.09	2,537.64	-1,717.40	2,879.76	1.40	0.70	
10,706.00	90.04	0.89	7,202.71	2,632.57	-1,714.11	2,971.01	2.85	-1.67	
10,800.00	89.52	0.80	7,203.07	2,726.56	-1,712.72	3,061.83	0.56	-0.55	
10,895.00	89.87	359.83	7,203.58	2,821.55	-1,712.20	3,153.83	1.09	0.37	
10,989.00	90.88	0.71	7,202.96	2,915.55	-1,711.76	3,244.88	1.43	1.07	
11,084.00	90.44	0.62	7,201.87	3,010.53	-1,710.65	3,336.73	0.47	-0.46	
11,178.00	90.70	0.36	7,200.93	3,104.53	-1,709.85	3,427.69	0.39	0.28	
11,272.00	92.07	0.18	7,198.66	3,198.49	-1,709.41	3,518.72	1.47	1.46	
11,366.00	91.10	1.24	7,196.06	3,292.45	-1,708.24	3,609.56	1.53	-1.03	
11,461.00	90.44	1.42	7,194.78	3,387.41	-1,706.04	3,701.12	0.72	-0.69	
11,555.00	90.44	1.59	7,194.06	3,481.38	-1,703.57	3,791.65	0.18	0.00	
11,649.00	90.57	1.59	7,193.23	3,575.34	-1,700.96	3,882.14	0.14	0.14	
11,743.00	90.57	0.89	7,192.30	3,669.31	-1,698.93	3,972.78	0.74	0.00	
11,837.00	89.96	0.80	7,191.86	3,763.30	-1,697.54	4,063.59	0.66	-0.65	
11,931.00	89.78	0.54	7,192.07	3,857.29	-1,696.44	4,154.48	0.34	-0.19	
12,026.00	89.12	0.10	7,192.99	3,952.29	-1,695.91	4,246.48	0.83	-0.69	
12,120.00	89.82	359.39	7,193.86	4,046.28	-1,696.33	4,337.74	1.06	0.74	
12,214.00	89.34	358.25	7,194.55	4,140.26	-1,698.27	4,429.35	1.32	-0.51	
12,309.00	91.63	0.36	7,193.74	4,235.23	-1,699.42	4,521.75	3.28	2.41	
12,403.00	90.79	359.04	7,191.76	4,329.21	-1,699.91	4,613.01	1.66	-0.89	
12,498.00	89.78	1.68	7,191.28	4,424.20	-1,699.31	4,704.98	2.98	-1.06	
12,593.00	90.00	1.06	7,191.47	4,519.17	-1,697.04	4,796.53	0.69	0.23	
12,687.00	89.87	2.38	7,191.57	4,613.12	-1,694.22	4,886.97	1.41	-0.14	
12,782.00	89.78	2.38	7,191.86	4,708.04	-1,690.28	4,978.06	0.09	-0.09	
12,876.00	90.22	1.68	7,191.86	4,801.98	-1,686.95	5,068.35	0.88	0.47	
12,970.00	90.66	0.80	7,191.14	4,895.96	-1,684.91	5,159.00	1.05	0.47	
13,065.00	90.75	2.12	7,189.97	4,990.92	-1,682.49	5,250.50	1.39	0.09	
13,159.00	90.88	1.15	7,188.63	5,084.87	-1,679.81	5,340.96	1.04	0.14	
13,254.00	91.10	0.80	7,186.99	5,179.84	-1,678.19	5,432.68	0.44	0.23	
13,348.00	90.92	3.00	7,185.34	5,273.77	-1,675.08	5,523.01	2.35	-0.19	
13,443.00	88.37	1.77	7,185.92	5,368.67	-1,671.12	5,614.09	2.98	-2.68	
13,537.00	88.59	1.42	7,188.42	5,462.60	-1,668.51	5,704.55	0.44	0.23	
13,631.00	88.86	0.89	7,190.51	5,556.56	-1,666.61	5,795.21	0.63	0.29	
13,726.00	88.95	359.66	7,192.33	5,651.54	-1,666.16	5,887.21	1.30	0.09	
13,821.00	89.74	1.42	7,193.41	5,746.53	-1,665.26	5,979.11	2.03	0.83	
13,916.00	89.56	0.89	7,193.99	5,841.50	-1,663.35	6,070.76	0.59	-0.19	
14,010.00	90.44	2.38	7,193.99	5,935.46	-1,660.67	6,161.23	1.84	0.94	
14,073.00	90.79	2.29	7,193.32	5,998.41	-1,658.10	6,221.65	0.57	0.56	
14,135.00	91.06	1.77	7,192.31	6,060.36	-1,655.90	6,281.20	0.94	0.44	

Cathedral Energy Services

Survey Report

Company:	Crestone Peak Resources	Local Co-ordinate Reference:	Well DAVIS 1S-9H-G266 - Slot DAVIS 1S-9H
Project:	DJ BASIN	TVD Reference:	23' KB @ 4940.00usft
Site:	S4-T2N-R66W	MD Reference:	23' KB @ 4940.00usft
Well:	DAVIS 1S-9H-G266	North Reference:	True
Wellbore:	OH	Survey Calculation Method:	Minimum Curvature
Design:	FINAL	Database:	USA EDM 5000 Multi Users DB

Survey									
Measured Depth (usft)	Inclination (°)	Azimuth (°)	Vertical Depth (usft)	+N/-S (usft)	+E/-W (usft)	Vertical Section (usft)	Dogleg Rate (°/100usf)	Build Rate (°/100u)	Formations / Comments
14,230.00	91.14	1.24	7,190.49	6,155.31	-1,653.41	6,372.67	0.56	0.08	
14,324.00	90.88	0.01	7,188.83	6,249.29	-1,652.38	6,463.57	1.34	-0.28	
14,419.00	90.62	357.55	7,187.59	6,344.25	-1,654.41	6,556.16	2.60	-0.27	
14,513.00	91.19	355.35	7,186.11	6,438.05	-1,660.23	6,648.55	2.42	0.61	
14,608.00	90.31	353.50	7,184.86	6,532.59	-1,669.45	6,742.48	2.16	-0.93	
14,702.00	89.91	350.87	7,184.68	6,625.71	-1,682.23	6,835.91	2.83	-0.43	
14,797.00	90.79	351.57	7,184.10	6,719.59	-1,696.73	6,930.49	1.18	0.93	
14,848.00	91.27	351.66	7,183.18	6,770.04	-1,704.17	6,981.23	0.96	0.94	LAST SURVEY - 14848.00' MD
14,904.00	91.27	351.66	7,181.94	6,825.43	-1,712.29	7,036.93	0.00	0.00	PTB - 14904.00' MD (465 FNL, 2082 FWL)

Targets									
Target Name - hit/miss target - Shape	Dip Angle (°)	Dip Dir. (°)	TVD (usft)	+N/-S (usft)	+E/-W (usft)	Northing (usft)	Easting (usft)	Latitude	Longitude
DAVIS 1S-9H-G266 TPZ - actual wellpath misses target center by 32.35usft at 7942.37usft MD (7235.21 TVD, -124.45 N, -1601.47 E) - Point	0.00	0.00	7,221.00	-128.56	-1,630.23	1,299,707.27	3,200,167.37	40.153872	-104.783885
DAVIS 1S 4378' VS - actual wellpath misses target center by 12.25usft at 12163.09usft MD (7194.07 TVD, 4089.36 N, -1696.98 E) - Point	0.00	0.00	7,204.00	4,089.44	-1,689.80	1,303,924.65	3,200,073.46	40.165451	-104.784099
DAVIS 1S (-134') VS - actual wellpath misses target center by 34.25usft at 7537.69usft MD (7191.60 TVD, -519.00 N, -1566.57 E) - Point	0.00	0.00	7,221.00	-534.18	-1,575.44	1,299,302.11	3,200,225.46	40.152759	-104.783689
DAVIS 1S TGT - actual wellpath misses target center by 5.66usft at 9145.44usft MD (7197.65 TVD, 1073.01 N, -1703.61 E) - Point	0.00	0.00	7,192.00	1,072.94	-1,703.70	1,300,908.13	3,200,084.12	40.157171	-104.784148
DAVIS 1S 1530' VS - actual wellpath misses target center by 4.59usft at 9220.91usft MD (7197.31 TVD, 1148.18 N, -1710.28 E) - Point	0.00	0.00	7,201.00	1,148.37	-1,707.56	1,300,983.53	3,200,079.64	40.157378	-104.784162
DAVIS 1S-9H-G266 BHL - actual wellpath misses target center by 12.26usft at 14904.00usft MD (7181.94 TVD, 6825.43 N, -1712.29 E) - Point	0.00	0.00	7,192.00	6,830.63	-1,716.98	1,306,665.52	3,200,023.96	40.172976	-104.784197

Design Annotations					
Measured Depth (usft)	Vertical Depth (usft)	Local Coordinates		Comment	
		+N/-S (usft)	+E/-W (usft)		
7,938.23	7,235.33	-128.56	-1,600.95	TPZ - 7938.23 (2170 FNL, 2209 FWL)	
14,848.00	7,183.18	6,770.04	-1,704.17	LAST SURVEY - 14848.00' MD	
14,904.00	7,181.94	6,825.43	-1,712.29	PTB - 14904.00' MD (465 FNL, 2082 FWL)	

Checked By: _____	Approved By: _____	Date: _____
-------------------	--------------------	-------------