



CRESTONE PEAK
RESOURCES

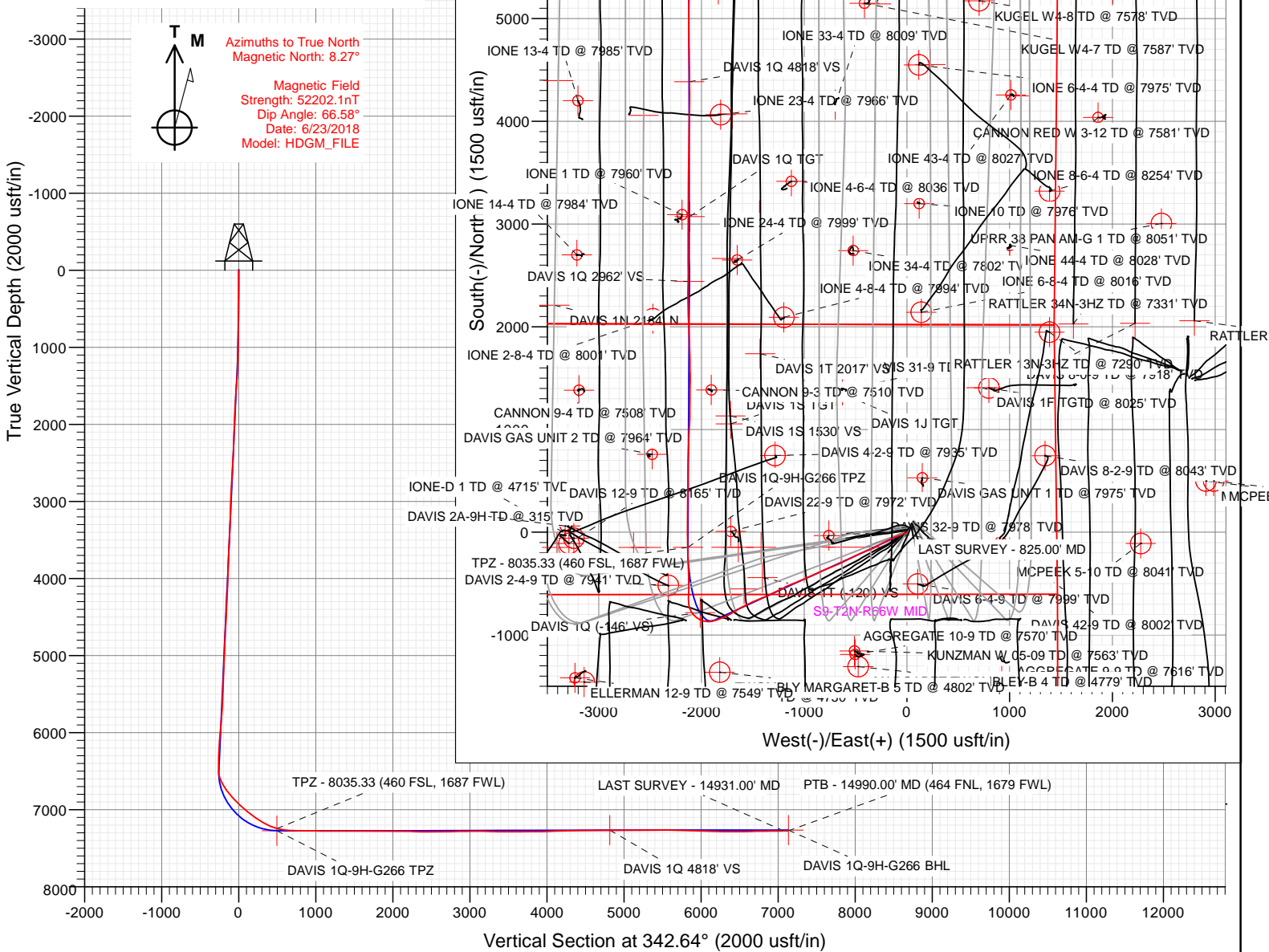
SECTION DETAILS

Sec	MD	Inc	Azi	TVD	+N/-S	+E/-W	Dleg	TFace	Vsect	Target
1	-10.00	0.00	0.00	-10.00	0.00	0.00	0.00	0.00	0.00	
2	340.00	0.00	0.00	340.00	0.00	0.00	0.00	0.00	0.00	
3	1343.70	20.07	245.48	1323.29	-72.24	-158.33	2.00	245.48	-21.70	
4	6849.13	20.07	245.48	6494.27	-856.60	-1877.51	0.00	0.00	-257.34	
5	8077.69	90.00	0.30	7272.00	-146.55	-2131.79	8.00	113.48	496.24	DAVIS 1Q-9H-G266 TPZ
6	10665.36	90.00	0.30	7272.00	2441.09	-2118.38	0.00	0.00	2962.00	DAVIS 1Q 2962' VS
7	10686.20	90.24	359.95	7271.96	2461.93	-2118.34	2.00	-55.18	2981.87	
8	12594.94	90.24	359.95	7264.03	4370.65	-2119.85	0.00	0.00	4804.09	
9	12609.51	90.00	359.79	7264.00	4385.22	-2119.88	2.00	-144.76	4818.00	DAVIS 1Q 4818' VS
10	15033.83	90.00	359.79	7264.00	6809.53	-2128.91	0.00	0.00	7134.56	DAVIS 1Q-9H-G266 BHL

FINAL
DAVIS 1Q-9H-G266
370637 185114 385337 185180
13' KB @ 4930.00usft
Ground Level @ 4917.00
North American Datum 1983
Well DAVIS 1Q-9H-G266 - Slot DAVIS 1Q-9H, True North

Type	Target	No Target (Freehand)	Azimuth	Origin Type	N/S	E/W	From TVD
Name	1Q TGT		342.64	Slot	0.00	0.00	0.00
DAVIS 1Q TGT			342.64	Slot	0.00	0.00	0.00
DAVIS 1Q 4818' VS			3072.94	Slot	-2115.11	40.162709	-104.785595
DAVIS 1Q-9H-G266 BHL			7264.00	Slot	4385.22	-2119.88	40.166311
DAVIS 1Q (-146' VS)			7272.00	Slot	6809.53	-2128.91	40.172966
DAVIS 1Q 2962' VS			7272.00	Slot	-782.43	-2013.41	-104.785520
DAVIS 1Q-9H-G266 TPZ			7272.00	Slot	2441.09	-2118.38	-104.785597
					-146.55	-2131.79	40.153871
							-104.785644

Project: DJ BASIN
Site: S4-T2N-R66W
Well: DAVIS 1Q-9H-G266
Wellbore: OH
Design: FINAL



WELL DETAILS: DAVIS 1Q-9H-G266

+N/-S	+E/-W	Northing	Easting	Latitude	Longitude
0.00	0.00	1299866.55	3201806.28	40.154273	-104.778017

CATHEDRAL





CRESTONE PEAK
RESOURCES

SECTION DETAILS

Sec	MD	Inc	Azi	TVD	+N/-S	+E/-W	Dleg	TFace	VSect	Target
1	-10.00	0.00	0.00	-10.00	0.00	0.00	0.00	0.00	0.00	
2	340.00	0.00	0.00	340.00	0.00	0.00	0.00	0.00	0.00	
3	1343.70	20.07	245.48	1323.29	-72.24	-158.33	2.00	245.48	-21.70	
4	6849.13	20.07	245.48	6494.27	-856.60	-1877.51	0.00	0.00	-257.34	
5	8077.69	90.00	0.30	7272.00	-146.55	-2131.79	8.00	113.48	496.24	DAVIS 1Q-9H-G266 TPZ
6	10665.36	90.00	0.30	7272.00	2441.09	-2118.38	0.00	0.00	2962.00	DAVIS 1Q 2962' VS
7	10686.20	90.24	359.95	7271.96	2461.93	-2118.34	2.00	-55.18	2981.87	
8	12594.94	90.24	359.95	7264.03	4370.65	-2119.85	0.00	0.00	4804.09	
9	12609.51	90.00	359.79	7264.00	4385.22	-2119.88	2.00	-144.76	4818.00	DAVIS 1Q 4818' VS
10	15033.83	90.00	359.79	7264.00	6809.53	-2128.91	0.00	0.00	7134.56	DAVIS 1Q-9H-G266 BHL

FINAL
DAVIS 1Q-9H-G266
370637 185114 385337 185180
13' KB @ 4930.00usft
Ground Level @ 4917.00
North American Datum 1983
Well DAVIS 1Q-9H-G266 - Slot DAVIS 1Q-9H, True North

Type	Target	Azimuth	Origin	Type	N/S	E/W	From
User	No Target (Freehand)	342.64	Slot		0.00	0.00	TVD
Name		TVD	+N/-S	+E/-W	Latitude	Longitude	
DAVIS 1Q TGT		7255.00	3072.94	-2115.11	40.162709	-104.785595	
DAVIS 1Q 4818' VS		7264.00	4385.22	-2119.88	40.166311	-104.785603	
DAVIS 1Q-9H-G266 BHL		7264.00	6809.53	-2128.91	40.172966	-104.785636	
DAVIS 1Q (-146' VS)		7272.00	-792.43	-2013.41	40.152125	-104.785220	
DAVIS 1Q 2962' VS		7272.00	2441.09	-2118.38	40.160974	-104.785597	
DAVIS 1Q-9H-G266 TPZ		7272.00	-146.55	-2131.79	40.153871	-104.785644	

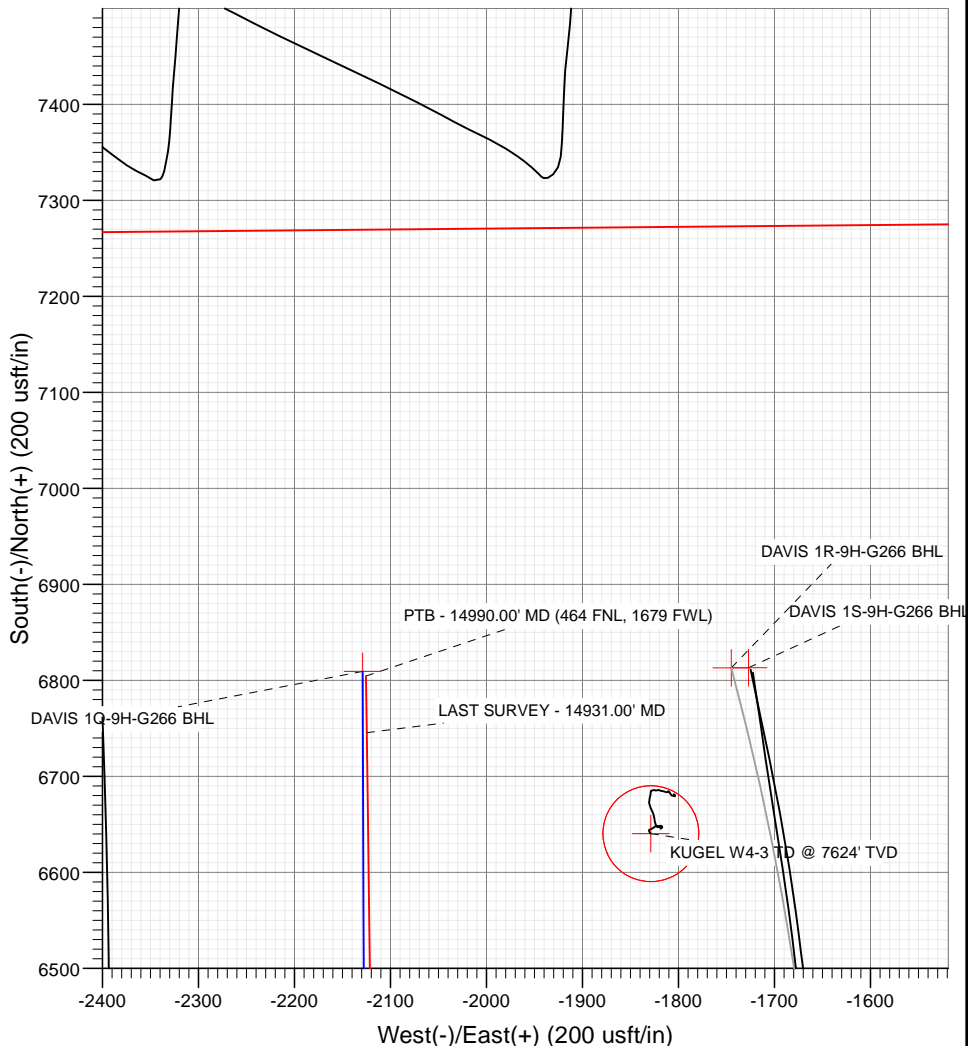
Project: DJ BASIN
Site: S4-T2N-R66W
Well: DAVIS 1Q-9H-G266
Wellbore: OH
Design: FINAL

True Vertical Depth (200 usft/in)



Azimuths to True North
Magnetic North: 8.27°

Magnetic Field
Strength: 52202.1nT
Dip Angle: 66.58°
Date: 6/23/2018
Model: HDGM_FILE



Vertical Section at 342.64° (200 usft/in)

WELL DETAILS: DAVIS 1Q-9H-G266

+N/-S	+E/-W	Northing	Easting	4917.00	Latitude	Longitude
0.00	0.00	1299866.55	3201806.28		40.154273	-104.778017

CATHEDRAL



Cathedral Energy Services

Survey Report

Company:	Crestone Peak Resources	Local Co-ordinate Reference:	Well DAVIS 1Q-9H-G266 - Slot DAVIS 1Q-9H
Project:	DJ BASIN	TVD Reference:	13' KB @ 4930.00usft
Site:	S4-T2N-R66W	MD Reference:	13' KB @ 4930.00usft
Well:	DAVIS 1Q-9H-G266	North Reference:	True
Wellbore:	OH	Survey Calculation Method:	Minimum Curvature
Design:	FINAL	Database:	USA EDM 5000 Multi Users DB

Project	DJ BASIN		
Map System:	US State Plane 1983	System Datum:	Mean Sea Level
Geo Datum:	North American Datum 1983		
Map Zone:	Colorado Northern Zone		

Site		S4-T2N-R66W			
Site Position:		Northing:	1,300,048.95 usft	Latitude:	40.154783
From:	Map	Easting:	3,201,389.75 usft	Longitude:	-104.779502
Position Uncertainty:	0.00 usft	Slot Radius:	13-3/16 "	Grid Convergence:	0.47 °

Well	DAVIS 1Q-9H-G266 - Slot DAVIS 1Q-9H					
Well Position	+N/-S	0.00 usft	Northing:	1,299,866.55 usft	Latitude:	40.154273
	+E/-W	0.00 usft	Easting:	3,201,806.28 usft	Longitude:	-104.778017
Position Uncertainty		0.00 usft	Wellhead Elevation:	usft	Ground Level:	4,917.00 usft

Wellbore	OH				
Magnetics	Model Name	Sample Date	Declination (°)	Dip Angle (°)	Field Strength (nT)
	HDGM_FILE	6/23/2018	8.27	66.58	52,202.10000000

Design	FINAL				
Audit Notes:					
Version:	1.0	Phase:	ACTUAL	Tie On Depth:	0.00
Vertical Section:	Depth From (TVD) (usft)	+N/-S (usft)	+E/-W (usft)	Direction (°)	
	0.00	0.00	0.00	342.64	

Survey Program	Date	6/29/2018			
From (usft)	To (usft)	Survey (Wellbore)	Tool Name	Description	
102.00	2,120.00	Survey #1 (OH)	VESSI_GYROFLEX	VESSI Gyroflex Gyro	
2,276.00	14,990.00	Survey #2 (OH)	MWD+HDGM	OWSG MWD + HDGM	

Survey										
Measured Depth (usft)	Inclination (°)	Azimuth (°)	Vertical Depth (usft)	+N/-S (usft)	+E/-W (usft)	Vertical Section (usft)	Dogleg Rate (°/100usf)	Build Rate (°/100u)	Formations / Comments	
0.00	0.00	0.00	0.00	0.00	0.00	0.00	0.00	0.00		
102.00	0.16	130.05	102.00	-0.09	0.11	-0.12	0.16	0.16		
134.00	0.11	112.47	134.00	-0.13	0.17	-0.18	0.20	-0.16		
165.00	0.21	132.96	165.00	-0.18	0.24	-0.25	0.37	0.32		
197.00	0.21	120.12	197.00	-0.25	0.33	-0.34	0.15	0.00		
228.00	0.30	125.66	228.00	-0.33	0.45	-0.45	0.30	0.29		
260.00	0.16	156.35	260.00	-0.42	0.54	-0.56	0.57	-0.44		
292.00	0.30	215.61	292.00	-0.53	0.50	-0.65	0.81	0.44		
323.00	0.73	210.34	323.00	-0.76	0.36	-0.83	1.39	1.39		
354.00	1.77	193.72	353.99	-1.40	0.14	-1.38	3.52	3.35		
386.00	2.02	189.41	385.97	-2.43	-0.07	-2.30	0.90	0.78		
417.00	2.31	205.41	416.95	-3.54	-0.42	-3.25	2.15	0.94		

Cathedral Energy Services

Survey Report

Company:	Crestone Peak Resources	Local Co-ordinate Reference:	Well DAVIS 1Q-9H-G266 - Slot DAVIS 1Q-9H
Project:	DJ BASIN	TVD Reference:	13' KB @ 4930.00usft
Site:	S4-T2N-R66W	MD Reference:	13' KB @ 4930.00usft
Well:	DAVIS 1Q-9H-G266	North Reference:	True
Wellbore:	OH	Survey Calculation Method:	Minimum Curvature
Design:	FINAL	Database:	USA EDM 5000 Multi Users DB

Survey									
Measured Depth (usft)	Inclination (°)	Azimuth (°)	Vertical Depth (usft)	+N/-S (usft)	+E/-W (usft)	Vertical Section (usft)	Dogleg Rate (°/100usf)	Build Rate (°/100u)	Formations / Comments
449.00	2.45	236.10	448.92	-4.50	-1.27	-3.92	3.96	0.44	
480.00	2.74	249.91	479.89	-5.13	-2.51	-4.14	2.22	0.94	
511.00	3.22	251.14	510.85	-5.66	-4.03	-4.20	1.56	1.55	
543.00	3.98	252.81	542.79	-6.28	-5.94	-4.22	2.40	2.37	
574.00	4.73	250.43	573.70	-7.03	-8.18	-4.27	2.49	2.42	
606.00	5.32	252.28	605.57	-7.92	-10.83	-4.33	1.91	1.84	
637.00	6.53	251.58	636.41	-8.91	-13.87	-4.37	3.91	3.90	
668.00	7.44	253.86	667.18	-10.03	-17.47	-4.36	3.07	2.94	
700.00	7.82	252.81	698.89	-11.25	-21.54	-4.31	1.26	1.19	
731.00	8.89	248.59	729.57	-12.75	-25.79	-4.47	3.98	3.45	
825.00	9.32	246.57	822.38	-18.42	-39.54	-5.79	0.57	0.46	LAST SURVEY - 825.00' MD
893.00	10.64	247.33	889.35	-23.03	-50.38	-6.95	1.95	1.94	
987.00	12.35	251.33	981.46	-29.60	-67.91	-7.99	2.01	1.82	
1,082.00	14.81	251.00	1,073.80	-36.80	-89.02	-8.57	2.59	2.59	
1,176.00	16.72	247.39	1,164.26	-45.91	-112.87	-10.15	2.28	2.03	
1,270.00	19.09	246.17	1,253.70	-57.33	-139.41	-13.12	2.55	2.52	
1,365.00	20.90	245.61	1,342.97	-70.60	-169.06	-16.94	1.92	1.91	
1,459.00	21.97	240.66	1,430.48	-86.14	-199.66	-22.64	2.23	1.14	
1,554.00	21.03	242.58	1,518.87	-102.70	-230.28	-29.31	1.24	-0.99	
1,649.00	20.01	241.73	1,607.84	-118.25	-259.73	-35.36	1.12	-1.07	
1,743.00	19.77	239.92	1,696.23	-133.83	-287.65	-41.91	0.70	-0.26	
1,837.00	19.35	241.54	1,784.81	-149.22	-315.10	-48.41	0.73	-0.45	
1,931.00	19.42	247.50	1,873.49	-162.62	-343.23	-52.81	2.10	0.07	
2,026.00	18.35	248.70	1,963.37	-174.10	-371.76	-55.25	1.20	-1.13	
2,120.00	19.81	247.82	2,052.21	-185.49	-400.29	-57.60	1.58	1.55	
2,276.00	18.15	249.09	2,199.72	-204.14	-447.47	-61.33	1.10	-1.06	
2,371.00	18.55	243.29	2,289.90	-216.22	-474.80	-64.70	1.97	0.42	
2,466.00	19.16	243.82	2,379.80	-229.89	-502.28	-69.55	0.67	0.64	
2,560.00	19.03	243.91	2,468.63	-243.43	-529.89	-74.24	0.14	-0.14	
2,654.00	20.08	244.70	2,557.20	-257.07	-558.24	-78.79	1.15	1.12	
2,749.00	20.92	243.38	2,646.19	-271.64	-588.15	-83.77	1.01	0.88	
2,843.00	22.50	243.20	2,733.52	-287.27	-619.21	-89.43	1.68	1.68	
2,938.00	21.23	242.41	2,821.68	-303.43	-650.68	-95.46	1.37	-1.34	
3,033.00	23.69	248.83	2,909.48	-318.29	-683.73	-99.79	3.65	2.59	
3,127.00	22.19	249.00	2,996.05	-331.48	-717.92	-102.17	1.60	-1.60	
3,221.00	20.22	248.04	3,083.68	-343.91	-749.56	-104.60	2.13	-2.10	
3,316.00	17.53	247.95	3,173.56	-355.43	-778.05	-107.09	2.83	-2.83	
3,411.00	19.47	243.73	3,263.65	-367.81	-805.51	-110.71	2.48	2.04	
3,506.00	19.56	244.78	3,353.19	-381.59	-834.10	-115.33	0.38	0.09	
3,600.00	19.73	244.87	3,441.72	-395.03	-862.70	-119.63	0.18	0.18	
3,694.00	20.22	245.66	3,530.07	-408.47	-891.86	-123.75	0.60	0.52	
3,789.00	21.23	247.16	3,618.92	-421.91	-922.67	-127.39	1.20	1.06	
3,884.00	17.14	247.07	3,708.62	-434.04	-951.43	-130.39	4.31	-4.31	
3,978.00	18.98	246.89	3,797.99	-445.44	-978.25	-133.27	1.96	1.96	
4,072.00	19.60	246.45	3,886.71	-457.74	-1,006.76	-136.50	0.68	0.66	
4,166.00	20.65	246.28	3,974.97	-470.71	-1,036.39	-140.04	1.12	1.12	
4,261.00	21.84	247.42	4,063.51	-484.23	-1,068.04	-143.50	1.33	1.25	
4,379.00	23.20	249.62	4,172.52	-500.76	-1,110.10	-146.72	1.36	1.15	
4,474.00	23.69	247.25	4,259.67	-514.65	-1,145.24	-149.50	1.12	0.52	
4,568.00	21.67	243.03	4,346.41	-529.83	-1,178.13	-154.17	2.76	-2.15	
4,663.00	17.53	240.30	4,435.88	-544.88	-1,206.20	-160.16	4.46	-4.36	
4,757.00	19.60	246.28	4,525.00	-558.24	-1,232.94	-164.93	2.99	2.20	
4,852.00	17.93	244.34	4,614.94	-570.98	-1,260.71	-168.81	1.88	-1.76	

Cathedral Energy Services

Survey Report

Company:	Crestone Peak Resources	Local Co-ordinate Reference:	Well DAVIS 1Q-9H-G266 - Slot DAVIS 1Q-9H
Project:	DJ BASIN	TVD Reference:	13' KB @ 4930.00usft
Site:	S4-T2N-R66W	MD Reference:	13' KB @ 4930.00usft
Well:	DAVIS 1Q-9H-G266	North Reference:	True
Wellbore:	OH	Survey Calculation Method:	Minimum Curvature
Design:	FINAL	Database:	USA EDM 5000 Multi Users DB

Survey									
Measured Depth (usft)	Inclination (°)	Azimuth (°)	Vertical Depth (usft)	+N/-S (usft)	+E/-W (usft)	Vertical Section (usft)	Dogleg Rate (°/100usf)	Build Rate (°/100u)	Formations / Comments
4,946.00	17.36	242.32	4,704.52	-583.76	-1,286.17	-173.41	0.89	-0.61	
5,041.00	20.26	245.66	4,794.44	-597.13	-1,313.72	-177.95	3.26	3.05	
5,135.00	21.05	245.84	4,882.40	-610.75	-1,343.95	-181.93	0.84	0.84	
5,230.00	20.83	246.37	4,971.12	-624.50	-1,374.99	-185.79	0.31	-0.23	
5,324.00	21.84	246.37	5,058.68	-638.21	-1,406.32	-189.53	1.07	1.07	
5,418.00	21.23	248.12	5,146.12	-651.56	-1,438.13	-192.78	0.94	-0.65	
5,512.00	20.00	247.68	5,234.10	-664.01	-1,468.80	-195.51	1.32	-1.31	
5,607.00	17.36	245.66	5,324.09	-676.02	-1,496.74	-198.63	2.86	-2.78	
5,701.00	15.91	245.32	5,414.15	-687.18	-1,521.23	-201.98	1.55	-1.54	
5,795.00	18.37	244.08	5,503.97	-699.03	-1,546.26	-205.83	2.65	2.62	
5,890.00	17.23	245.14	5,594.42	-711.49	-1,572.49	-209.89	1.25	-1.20	
5,984.00	18.85	241.71	5,683.80	-724.54	-1,598.50	-214.59	2.06	1.72	
6,079.00	18.72	238.46	5,773.74	-739.79	-1,625.01	-221.23	1.11	-0.14	
6,173.00	17.84	240.21	5,863.00	-754.84	-1,650.36	-228.03	1.10	-0.94	
6,267.00	19.78	238.72	5,951.97	-770.25	-1,676.45	-234.95	2.13	2.06	
6,362.00	19.95	238.37	6,041.32	-787.10	-1,703.99	-242.82	0.22	0.18	
6,456.00	20.30	242.24	6,129.59	-803.10	-1,732.07	-249.71	1.46	0.37	
6,551.00	21.93	243.91	6,218.21	-818.58	-1,762.59	-255.38	1.83	1.72	
6,646.00	23.51	248.92	6,305.84	-833.20	-1,796.21	-259.30	2.63	1.66	
6,740.00	22.15	250.76	6,392.47	-845.78	-1,830.44	-261.10	1.63	-1.45	
6,787.00	25.80	250.94	6,435.41	-852.05	-1,848.48	-261.70	7.77	7.77	
6,834.00	32.17	253.13	6,476.51	-859.02	-1,870.14	-261.89	13.74	13.55	
6,881.00	37.44	257.97	6,515.09	-865.64	-1,896.11	-260.46	12.65	11.21	
6,928.00	39.81	267.37	6,551.84	-869.31	-1,925.14	-255.30	13.45	5.04	
6,975.00	38.63	278.53	6,588.30	-867.82	-1,954.72	-245.05	15.21	-2.51	
7,023.00	38.89	286.00	6,625.75	-861.44	-1,984.04	-230.22	9.75	0.54	
7,070.00	39.07	293.56	6,662.30	-851.45	-2,011.81	-212.39	10.12	0.38	
7,117.00	39.64	303.58	6,698.68	-837.22	-2,037.90	-191.03	13.56	1.21	
7,164.00	40.61	312.99	6,734.65	-818.48	-2,061.61	-166.07	13.06	2.06	
7,211.00	40.52	320.46	6,770.38	-796.27	-2,082.53	-138.62	10.33	-0.19	
7,258.00	41.09	329.51	6,805.99	-771.16	-2,100.10	-109.42	12.63	1.21	
7,305.00	42.45	339.53	6,841.08	-742.96	-2,113.50	-78.50	14.48	2.89	
7,352.00	44.43	349.20	6,875.24	-711.90	-2,122.14	-46.28	14.75	4.21	
7,400.00	45.92	358.08	6,909.11	-678.13	-2,125.87	-12.93	13.48	3.10	
7,447.00	46.19	0.54	6,941.73	-644.30	-2,126.27	19.48	3.81	0.57	
7,494.00	48.25	1.85	6,973.65	-609.81	-2,125.55	52.18	4.84	4.38	
7,541.00	51.99	2.03	7,003.78	-573.77	-2,124.33	86.21	7.96	7.96	
7,588.00	53.75	0.36	7,032.15	-536.31	-2,123.55	121.73	4.70	3.74	
7,635.00	53.97	359.92	7,059.87	-498.36	-2,123.46	157.93	0.89	0.47	
7,682.00	55.68	358.78	7,086.95	-459.94	-2,123.90	194.73	4.14	3.64	
7,729.00	58.01	358.34	7,112.65	-420.61	-2,124.89	232.56	5.02	4.96	
7,777.00	57.79	357.81	7,138.16	-379.97	-2,126.26	271.76	1.04	-0.46	
7,824.00	59.63	357.90	7,162.57	-339.84	-2,127.76	310.51	3.92	3.91	
7,871.00	63.28	357.20	7,185.02	-298.60	-2,129.53	350.40	7.88	7.77	
7,918.00	66.23	358.08	7,205.07	-256.13	-2,131.27	391.46	6.50	6.28	
7,966.00	68.95	358.78	7,223.36	-211.77	-2,132.49	434.15	5.82	5.67	
8,013.00	74.09	359.31	7,238.26	-167.22	-2,133.23	476.90	10.99	10.94	
8,035.33	75.70	359.31	7,244.07	-145.66	-2,133.49	497.55	7.23	7.23	TPZ - 8035.33 (460 FSL, 1687 FWL)
8,061.00	77.56	359.31	7,250.01	-120.69	-2,133.79	521.48	7.23	7.23	
8,108.00	80.73	359.13	7,258.86	-74.54	-2,134.42	565.71	6.76	6.74	
8,155.00	83.01	358.95	7,265.51	-28.02	-2,135.19	610.34	4.87	4.85	
8,250.00	89.08	359.66	7,272.05	66.70	-2,136.34	701.09	6.43	6.39	
8,344.00	90.09	0.10	7,272.74	160.70	-2,136.54	790.86	1.17	1.07	

Cathedral Energy Services

Survey Report

Company:	Crestone Peak Resources	Local Co-ordinate Reference:	Well DAVIS 1Q-9H-G266 - Slot DAVIS 1Q-9H
Project:	DJ BASIN	TVD Reference:	13' KB @ 4930.00usft
Site:	S4-T2N-R66W	MD Reference:	13' KB @ 4930.00usft
Well:	DAVIS 1Q-9H-G266	North Reference:	True
Wellbore:	OH	Survey Calculation Method:	Minimum Curvature
Design:	FINAL	Database:	USA EDM 5000 Multi Users DB

Survey									
Measured Depth (usft)	Inclination (°)	Azimuth (°)	Vertical Depth (usft)	+N/-S (usft)	+E/-W (usft)	Vertical Section (usft)	Dogleg Rate (°/100usf)	Build Rate (°/100u)	Formations / Comments
8,438.00	89.08	1.24	7,273.42	254.68	-2,135.44	880.24	1.62	-1.07	
8,533.00	89.08	1.15	7,274.94	349.65	-2,133.46	970.29	0.09	0.00	
8,627.00	89.25	0.18	7,276.31	443.63	-2,132.37	1,059.67	1.05	0.18	
8,722.00	90.66	0.80	7,276.39	538.63	-2,131.56	1,150.09	1.62	1.48	
8,816.00	89.03	0.80	7,276.64	632.61	-2,130.24	1,239.41	1.73	-1.73	
8,911.00	90.18	359.48	7,277.30	727.61	-2,130.01	1,330.01	1.84	1.21	
9,005.00	89.78	2.38	7,277.33	821.59	-2,128.49	1,419.25	3.11	-0.43	
9,100.00	90.00	3.35	7,277.51	916.47	-2,123.74	1,508.39	1.05	0.23	
9,195.00	90.18	3.79	7,277.36	1,011.28	-2,117.82	1,597.12	0.50	0.19	
9,289.00	89.17	0.89	7,277.89	1,105.19	-2,113.98	1,685.61	3.27	-1.07	
9,384.00	90.04	0.54	7,278.55	1,200.18	-2,112.80	1,775.91	0.99	0.92	
9,478.00	89.43	0.27	7,278.98	1,294.18	-2,112.13	1,865.43	0.71	-0.65	
9,572.00	89.91	0.71	7,279.53	1,388.17	-2,111.33	1,954.90	0.69	0.51	
9,666.00	89.25	0.10	7,280.21	1,482.16	-2,110.67	2,044.42	0.96	-0.70	
9,760.00	90.62	359.22	7,280.32	1,576.16	-2,111.22	2,134.30	1.73	1.46	
9,855.00	88.02	358.87	7,281.45	1,671.13	-2,112.81	2,225.42	2.76	-2.74	
9,950.00	87.80	358.60	7,284.91	1,766.04	-2,114.90	2,316.63	0.37	-0.23	
10,045.00	89.74	357.90	7,286.95	1,860.97	-2,117.80	2,408.10	2.17	2.04	
10,139.00	90.84	357.72	7,286.48	1,954.90	-2,121.39	2,498.82	1.19	1.17	
10,233.00	90.79	356.93	7,285.14	2,048.79	-2,125.78	2,589.74	0.84	-0.05	
10,328.00	90.26	358.34	7,284.27	2,143.70	-2,129.70	2,681.50	1.59	-0.56	
10,422.00	91.45	359.57	7,282.87	2,237.67	-2,131.42	2,771.70	1.82	1.27	
10,516.00	90.22	1.15	7,281.50	2,331.66	-2,130.82	2,861.23	2.13	-1.31	
10,611.00	90.84	0.89	7,280.62	2,426.64	-2,129.13	2,951.38	0.71	0.65	
10,705.00	91.01	359.57	7,279.10	2,520.62	-2,128.76	3,040.97	1.42	0.18	
10,800.00	88.90	359.31	7,279.17	2,615.61	-2,129.68	3,131.91	2.24	-2.22	
10,894.00	88.95	0.36	7,280.94	2,709.59	-2,129.96	3,221.69	1.12	0.05	
10,989.00	88.51	0.18	7,283.04	2,804.57	-2,129.51	3,312.21	0.50	-0.46	
11,083.00	89.87	0.18	7,284.37	2,898.56	-2,129.21	3,401.83	1.45	1.45	
11,177.00	89.21	0.10	7,285.13	2,992.55	-2,128.98	3,491.47	0.71	-0.70	
11,272.00	89.82	0.62	7,285.93	3,087.55	-2,128.39	3,581.96	0.84	0.64	
11,366.00	91.01	0.36	7,285.25	3,181.54	-2,127.58	3,671.43	1.30	1.27	
11,460.00	90.70	0.18	7,283.85	3,275.53	-2,127.14	3,761.01	0.38	-0.33	
11,554.00	90.26	359.48	7,283.06	3,369.52	-2,127.42	3,850.80	0.88	-0.47	
11,648.00	90.04	0.54	7,282.81	3,463.52	-2,127.40	3,940.52	1.15	-0.23	
11,743.00	91.23	1.42	7,281.76	3,558.50	-2,125.78	4,030.68	1.56	1.25	
11,837.00	91.63	0.71	7,279.42	3,652.45	-2,124.03	4,119.83	0.87	0.43	
11,931.00	91.89	1.15	7,276.53	3,746.39	-2,122.51	4,209.04	0.54	0.28	
12,025.00	91.58	1.06	7,273.68	3,840.33	-2,120.69	4,298.16	0.34	-0.33	
12,119.00	91.54	0.98	7,271.12	3,934.28	-2,119.02	4,387.33	0.10	-0.04	
12,214.00	91.14	0.62	7,268.90	4,029.25	-2,117.70	4,477.58	0.57	-0.42	
12,309.00	90.53	0.71	7,267.52	4,124.23	-2,116.59	4,567.91	0.65	-0.64	
12,403.00	89.78	0.18	7,267.26	4,218.23	-2,115.86	4,657.40	0.98	-0.80	
12,498.00	90.22	359.74	7,267.26	4,313.23	-2,115.93	4,748.09	0.66	0.46	
12,592.00	89.96	359.39	7,267.12	4,407.22	-2,116.64	4,838.02	0.46	-0.28	
12,687.00	89.96	359.04	7,267.18	4,502.21	-2,117.94	4,929.07	0.37	0.00	
12,781.00	90.22	358.78	7,267.03	4,596.20	-2,119.73	5,019.31	0.39	0.28	
12,875.00	90.53	358.87	7,266.42	4,690.18	-2,121.66	5,109.58	0.34	0.33	
12,970.00	90.70	358.78	7,265.40	4,785.15	-2,123.61	5,200.81	0.20	0.18	
13,064.00	90.04	359.31	7,264.79	4,879.13	-2,125.17	5,290.98	0.90	-0.70	
13,159.00	90.53	0.62	7,264.32	4,974.13	-2,125.23	5,381.67	1.47	0.52	
13,253.00	90.62	1.24	7,263.38	5,068.11	-2,123.71	5,470.91	0.67	0.10	
13,347.00	90.09	0.80	7,262.79	5,162.10	-2,122.03	5,560.12	0.73	-0.56	

Cathedral Energy Services

Survey Report

Company:	Crestone Peak Resources	Local Co-ordinate Reference:	Well DAVIS 1Q-9H-G266 - Slot DAVIS 1Q-9H
Project:	DJ BASIN	TVD Reference:	13' KB @ 4930.00usft
Site:	S4-T2N-R66W	MD Reference:	13' KB @ 4930.00usft
Well:	DAVIS 1Q-9H-G266	North Reference:	True
Wellbore:	OH	Survey Calculation Method:	Minimum Curvature
Design:	FINAL	Database:	USA EDM 5000 Multi Users DB

Survey									
Measured Depth (usft)	Inclination (°)	Azimuth (°)	Vertical Depth (usft)	+N/-S (usft)	+E/-W (usft)	Vertical Section (usft)	Dogleg Rate (°/100usf)	Build Rate (°/100u)	Formations / Comments
13,442.00	88.07	0.62	7,264.32	5,257.07	-2,120.86	5,650.42	2.13	-2.13	
13,536.00	88.11	0.62	7,267.45	5,351.01	-2,119.84	5,739.77	0.04	0.04	
13,631.00	88.02	0.45	7,270.66	5,445.95	-2,118.95	5,830.13	0.20	-0.09	
13,726.00	87.89	359.75	7,274.05	5,540.89	-2,118.79	5,920.69	0.75	-0.14	
13,820.00	87.50	359.31	7,277.83	5,634.81	-2,119.56	6,010.56	0.63	-0.41	
13,915.00	88.77	359.92	7,280.92	5,729.76	-2,120.20	6,101.37	1.48	1.34	
14,009.00	89.74	0.01	7,282.14	5,823.75	-2,120.25	6,191.10	1.04	1.03	
14,103.00	90.35	359.22	7,282.07	5,917.75	-2,120.88	6,281.00	1.06	0.65	
14,198.00	89.52	359.13	7,282.18	6,012.74	-2,122.25	6,372.08	0.88	-0.87	
14,292.00	89.87	0.27	7,282.68	6,106.73	-2,122.74	6,461.94	1.27	0.37	
14,387.00	90.31	359.83	7,282.53	6,201.73	-2,122.66	6,552.58	0.66	0.46	
14,481.00	91.32	0.89	7,281.19	6,295.72	-2,122.07	6,642.11	1.56	1.07	
14,576.00	90.84	0.27	7,279.40	6,390.69	-2,121.11	6,732.48	0.83	-0.51	
14,671.00	90.44	359.48	7,278.34	6,485.69	-2,121.32	6,823.20	0.93	-0.42	
14,765.00	90.40	359.22	7,277.65	6,579.68	-2,122.38	6,913.23	0.28	-0.04	
14,859.00	90.70	359.39	7,276.75	6,673.67	-2,123.52	7,003.28	0.37	0.32	
14,931.00	90.70	359.13	7,275.87	6,745.66	-2,124.45	7,072.27	0.36	0.00	LAST SURVEY - 14931.00' MD
14,990.00	90.70	359.13	7,275.15	6,804.64	-2,125.35	7,128.84	0.00	0.00	PTB - 14990.00' MD (464 FNL, 1679 FWL)

Cathedral Energy Services

Survey Report

Company:	Crestone Peak Resources	Local Co-ordinate Reference:	Well DAVIS 1Q-9H-G266 - Slot DAVIS 1Q-9H
Project:	DJ BASIN	TVD Reference:	13' KB @ 4930.00usft
Site:	S4-T2N-R66W	MD Reference:	13' KB @ 4930.00usft
Well:	DAVIS 1Q-9H-G266	North Reference:	True
Wellbore:	OH	Survey Calculation Method:	Minimum Curvature
Design:	FINAL	Database:	USA EDM 5000 Multi Users DB

Targets									
Target Name	Dip Angle	Dip Dir.	TVD	+N/-S	+E/-W	Northing	Easting	Latitude	Longitude
- hit/miss target	(°)	(°)	(usft)	(usft)	(usft)	(usft)	(usft)		
- Shape									
DAVIS 1Q-9H-G266 TPZ	0.00	0.00	7,272.00	-146.55	-2,131.79	1,299,702.65	3,199,675.76	40.153871	-104.785644
- actual wellpath misses target center by 27.36usft at 8040.90usft MD (7245.43 TVD, -140.26 N, -2133.55 E)									
- Point									
DAVIS 1Q 2962' VS	0.00	0.00	7,272.00	2,441.09	-2,118.38	1,302,290.31	3,199,668.09	40.160974	-104.785597
- actual wellpath misses target center by 13.49usft at 10625.64usft MD (7280.40 TVD, 2441.27 N, -2128.93 E)									
- Point									
DAVIS 1Q 4818' VS	0.00	0.00	7,264.00	4,385.22	-2,119.88	1,304,234.36	3,199,650.76	40.166311	-104.785603
- actual wellpath misses target center by 4.65usft at 12570.03usft MD (7267.11 TVD, 4385.25 N, -2116.42 E)									
- Point									
DAVIS 1Q-9H-G266 BHI	0.00	0.00	7,264.00	6,809.53	-2,128.91	1,306,658.52	3,199,622.00	40.172966	-104.785636
- actual wellpath misses target center by 12.68usft at 14990.00usft MD (7275.15 TVD, 6804.64 N, -2125.35 E)									
- Point									
DAVIS 1Q (-146' VS)	0.00	0.00	7,272.00	-782.43	-2,013.41	1,299,067.75	3,199,799.30	40.152125	-104.785220
- actual wellpath misses target center by 357.47usft at 7541.00usft MD (7003.78 TVD, -573.77 N, -2124.33 E)									
- Point									
DAVIS 1Q TGT	0.00	0.00	7,255.00	3,072.94	-2,115.11	1,302,922.17	3,199,666.22	40.162709	-104.785585
- actual wellpath misses target center by 33.67usft at 11257.22usft MD (7285.87 TVD, 3072.76 N, -2128.54 E)									
- Point									

Design Annotations					
Measured Depth	Vertical Depth	Local Coordinates			
(usft)	(usft)	+N/-S	+E/-W	Comment	
(usft)	(usft)	(usft)	(usft)		
825.00	822.38	-18.42	-39.54	LAST SURVEY - 825.00' MD	
8,035.33	7,244.07	-145.66	-2,133.49	TPZ - 8035.33 (460 FSL, 1687 FWL)	
14,931.00	7,275.87	6,745.66	-2,124.45	LAST SURVEY - 14931.00' MD	
14,990.00	7,275.15	6,804.64	-2,125.35	PTB - 14990.00' MD (464 FNL, 1679 FWL)	

Checked By: _____ Approved By: _____ Date: _____