

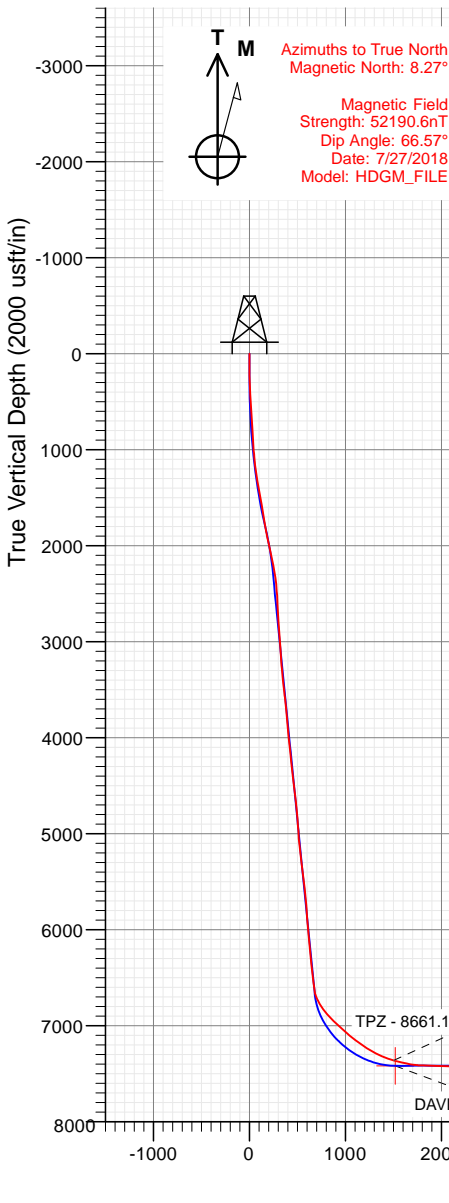


CRESTONE PEAK
RESOURCES

FINAL
DAVIS 1M-9H-G266
371337 185118 385337 185204
23 KB @ 4940.00usft
Ground Level @ 4917.00
North American Datum 1983
Well DAVIS 1M-9H-G266 - Slot DAVIS 1M-9H, True North

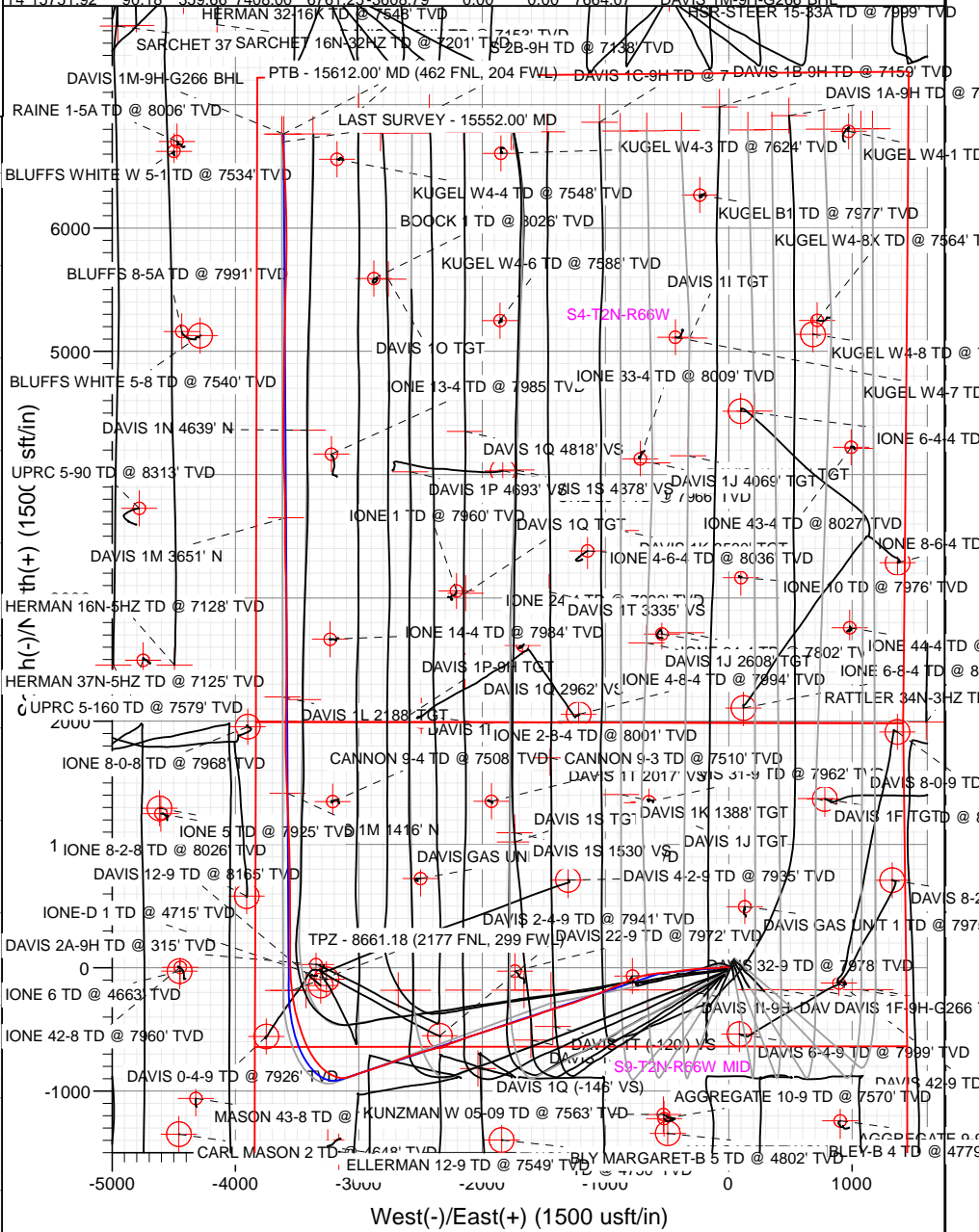
Type	Target	No Target (Freehand)	Azimuth	Origin Type	N/S	E/W	From TVD
Name	TVD	+N/-S	+E/-W	Latitude	Longitude		
DAVIS 1M-9H-G266 BHL	7408.00	6761.25	-3608.79	40.172028	-104.750860		
DAVIS 1M 1416' N	7417.00	7417.00	-3577.16	40.155255	-104.750744		
DAVIS 1M 3651' N	7418.00	3651.00	-3590.38	40.164390	-104.750793		
DAVIS 1M-9H-G266 TPZ	7418.00	-183.05	-3567.69	40.153865	-104.750710		

Project: DJ BASIN
Site: S4-T2N-R66W
Well: DAVIS 1M-9H-G266
Wellbore: OH
Design: FINAL



SECTION DETAILS

Sec	MD	Inc	Azi	TVD	+N/-S	+E/-W	Dleg	TFace	Vsect	Target
1	0.00	0.00	0.00	0.00	0.00	0.00	0.00	0.00	0.00	
2	250.00	0.00	0.00	250.00	0.00	0.00	0.00	0.00	0.00	
3	500.00	5.00	270.00	499.68	0.00	-10.90	2.00	270.00	5.13	
4	600.00	5.00	270.00	599.30	0.00	-19.62	0.00	0.00	9.24	
5	1886.12	30.70	265.00	1813.31	-29.10	-409.29	2.00	-5.88	167.05	
6	1986.12	30.70	265.00	1899.29	-33.55	-460.15	0.00	0.00	187.07	
7	2327.43	30.61	251.59	2193.26	-68.63	-629.59	2.00	-96.54	235.91	
8	7536.74	30.61	251.59	6676.76	-906.31	-3146.22	0.00	0.00	681.92	
9	8807.49	90.04	359.66	7418.00	-183.05	-3567.69	7.80	105.67	1518.44	DAVIS 1M-9H-G266 TPZ
10	10406.56	90.04	359.66	7417.00	1416.00	-3577.16	0.00	0.00	2933.58	DAVIS 1M 1416' N
11	10409.66	89.97	359.66	7417.00	1419.10	-3577.17	2.00	-180.00	2936.32	
12	12631.08	89.97	359.66	7418.01	3640.48	-3590.32	0.00	0.00	4902.22	
13	12641.60	90.18	359.66	7418.00	3651.00	-3590.38	2.00	0.00	4911.53	DAVIS 1M 3651' N
14	15751.92	90.18	359.66	7408.00	6761.25	-3608.79	0.00	0.00	7664.07	DAVIS 1M-9H-G266 BHL



WELL DETAILS: DAVIS 1M-9H-G266

+N/-S	+E/-W	Northing	Easting	Latitude	Longitude	DAVIS 1M-9H
0.00	0.00	1299901.44	3201825.85	40.154368	-104.777946	

CATHEDRAL





CRESTONE PEAK
RESOURCES

FINAL
DAVIS 1M-9H-G266
371337 185115 385337 185204
23 KB @ 4940.00usft
Ground Level @ 4917.00
North American Datum 1983
Well DAVIS 1M-9H-G266 - Slot DAVIS 1M-9H, True North

Type	Target	No Target (Freehand)	Azimuth	Origin Type	Slot	N/S	E/W	From TVD
Name	TVD	+N/-S	+E/-W	Latitude	Longitude			
DAVIS 1M-9H-G266 BHL	7408.00	6761.25	-3608.79	40.172928	-104.790860			
DAVIS 1M 1416' N	7417.00	1416.00	-3577.16	40.155255	-104.790744			
DAVIS 1M 3651' N	7418.00	3651.00	-3590.38	40.164390	-104.790793			
DAVIS 1M-9H-G266 TPZ	7418.00	-183.05	-3567.69	40.153865	-104.790710			

Project: DJ BASIN
Site: S4-T2N-R66W
Well: DAVIS 1M-9H-G266
Wellbore: OH
Design: FINAL



Azimuths to True North
Magnetic North: 8.27°

Magnetic Field
Strength: 52190.6nT
Dip Angle: 66.57°
Date: 7/27/2018
Model: HDGM_FILE

True Vertical Depth (200 usft/in)

South(-)/North(+) (200 usft/in)

West(-)/East(+) (200 usft/in)

PTB - 15612.00' MD (462 FNL, 204 FWL)
LAST SURVEY - 15552.00' MD
DAVIS 1M-9H-G266 BHL
DAVIS 1L-9H-G266 BHL
DAVIS 1N-9H-G266 BHL
KUGEL W4-4 TD @ 7548' TVD
DAVIS 2A-9HX TD @ 7153' TVD

Vertical Section at 331.91° (200 usft/in)

WELL DETAILS: DAVIS 1M-9H-G266

4917.00
+N/-S 0.00 +E/-W 0.00 Northing 1299901.44 Easting 3201825.85 Latitude 40.154368 Longitude -104.777946 DAVIS 1M-9H

CATHEDRAL



SECTION DETAILS

Sec	MD	Inc	Azi	TVD	+N/-S	+E/-W	Dleg	TFace	VSect	Target
1	0.00	0.00	0.00	0.00	0.00	0.00	0.00	0.00	0.00	
2	250.00	0.00	0.00	250.00	0.00	0.00	0.00	0.00	0.00	
3	500.00	5.00	270.00	499.68	0.00	-10.90	2.00	270.00	5.13	
4	600.00	5.00	270.00	599.30	0.00	-19.62	0.00	0.00	9.24	
5	1886.12	30.70	265.00	1813.31	-29.10	-409.29	2.00	-5.88	167.05	
6	1986.12	30.70	265.00	1899.29	-33.55	-460.15	0.00	0.00	187.07	
7	2327.43	30.61	251.59	2193.26	-68.63	-629.59	2.00	-96.54	235.91	
8	7536.74	30.61	251.59	6676.76	-906.31	-3146.22	0.00	0.00	681.92	
9	8807.49	90.04	359.66	7418.00	-183.05	-3567.69	7.80	105.67	1518.44	DAVIS 1M-9H-G266 TPZ
10	10406.56	90.04	359.66	7417.00	1416.00	-3577.16	0.00	0.00	2933.58	DAVIS 1M 1416' N
11	10409.66	89.97	359.66	7417.00	1419.10	-3577.17	2.00	-180.00	2936.32	
12	12631.08	89.97	359.66	7418.01	3640.48	-3590.32	0.00	0.00	4902.22	
13	12641.60	90.18	359.66	7418.00	3651.00	-3590.38	2.00	0.00	4911.53	DAVIS 1M 3651' N
14	15751.92	90.18	359.66	7408.00	6761.25	-3608.79	0.00	0.00	7664.07	DAVIS 1M-9H-G266 BHL

Cathedral Energy Services

Survey Report

Company:	Crestone Peak Resources	Local Co-ordinate Reference:	Well DAVIS 1M-9H-G266 - Slot DAVIS 1M-9H
Project:	DJ BASIN	TVD Reference:	23' KB @ 4940.00usft
Site:	S4-T2N-R66W	MD Reference:	23' KB @ 4940.00usft
Well:	DAVIS 1M-9H-G266	North Reference:	True
Wellbore:	OH	Survey Calculation Method:	Minimum Curvature
Design:	FINAL	Database:	USA EDM 5000 Multi Users DB

Project	DJ BASIN		
Map System:	US State Plane 1983	System Datum:	Mean Sea Level
Geo Datum:	North American Datum 1983		
Map Zone:	Colorado Northern Zone		

Site		S4-T2N-R66W			
Site Position:		Northing:	1,300,048.95 usft	Latitude:	40.154783
From:	Map	Easting:	3,201,389.75 usft	Longitude:	-104.779502
Position Uncertainty:	0.00 usft	Slot Radius:	13-3/16 "	Grid Convergence:	0.47 °

Well	DAVIS 1M-9H-G266 - Slot DAVIS 1M-9H					
Well Position	+N/-S	0.00 usft	Northing:	1,299,901.44 usft	Latitude:	40.154368
	+E/-W	0.00 usft	Easting:	3,201,825.85 usft	Longitude:	-104.777946
Position Uncertainty		0.00 usft	Wellhead Elevation:	usft	Ground Level:	4,917.00 usft

Wellbore	OH				
Magnetics	Model Name	Sample Date	Declination (°)	Dip Angle (°)	Field Strength (nT)
	HDGM_FILE	7/27/2018	8.27	66.57	52,190.60000000

Design	FINAL				
Audit Notes:					
Version:	1.0	Phase:	ACTUAL	Tie On Depth:	0.00
Vertical Section:	Depth From (TVD) (usft)	+N/-S (usft)	+E/-W (usft)	Direction (°)	
	0.00	0.00	0.00	331.91	

Survey Program	Date	7/23/2018			
From (usft)	To (usft)	Survey (Wellbore)	Tool Name	Description	
102.00	2,184.00	Survey #1 (OH)	VESSI_GYROFLEX	VESSI Gyroflex Gyro	
2,317.00	15,612.00	Survey #2 (OH)	MWD+HDGM	OWSG MWD + HDGM	

Survey									
Measured Depth (usft)	Inclination (°)	Azimuth (°)	Vertical Depth (usft)	+N/-S (usft)	+E/-W (usft)	Vertical Section (usft)	Dogleg Rate (°/100usf)	Build Rate (°/100u)	Formations / Comments
0.00	0.00	0.00	0.00	0.00	0.00	0.00	0.00	0.00	
102.00	0.56	358.94	102.00	0.50	-0.01	0.44	0.55	0.55	
134.00	0.48	333.80	134.00	0.77	-0.07	0.72	0.75	-0.25	
165.00	0.56	319.90	165.00	1.01	-0.23	1.00	0.48	0.26	
197.00	0.78	293.96	196.99	1.22	-0.53	1.32	1.15	0.69	
228.00	1.34	289.48	227.99	1.42	-1.06	1.75	1.82	1.81	
323.00	3.36	282.62	322.90	2.40	-4.82	4.39	2.14	2.13	
417.00	5.24	280.77	416.63	3.80	-11.73	8.88	2.01	2.00	
485.00	6.60	272.36	484.27	4.55	-18.69	12.81	2.37	2.00	
579.00	8.20	270.16	577.49	4.79	-30.79	18.72	1.73	1.70	
674.00	9.48	266.90	671.36	4.38	-45.38	25.23	1.45	1.35	
768.00	10.40	259.05	763.95	2.35	-61.44	31.00	1.74	0.98	

Cathedral Energy Services

Survey Report

Company:	Crestone Peak Resources	Local Co-ordinate Reference:	Well DAVIS 1M-9H-G266 - Slot DAVIS 1M-9H
Project:	DJ BASIN	TVD Reference:	23' KB @ 4940.00usft
Site:	S4-T2N-R66W	MD Reference:	23' KB @ 4940.00usft
Well:	DAVIS 1M-9H-G266	North Reference:	True
Wellbore:	OH	Survey Calculation Method:	Minimum Curvature
Design:	FINAL	Database:	USA EDM 5000 Multi Users DB

Survey									
Measured Depth (usft)	Inclination (°)	Azimuth (°)	Vertical Depth (usft)	+N/-S (usft)	+E/-W (usft)	Vertical Section (usft)	Dogleg Rate (°/100usf)	Build Rate (°/100u)	Formations / Comments
863.00	9.23	257.91	857.56	-0.87	-77.30	35.63	1.25	-1.23	
957.00	9.53	264.97	950.30	-3.13	-92.43	40.76	1.26	0.32	
1,051.00	11.73	269.14	1,042.69	-3.96	-109.74	48.18	2.48	2.34	
1,146.00	14.17	269.47	1,135.26	-4.21	-131.02	57.98	2.57	2.57	
1,240.00	16.51	268.11	1,225.91	-4.76	-155.88	69.20	2.52	2.49	
1,334.00	19.42	267.50	1,315.31	-5.88	-184.85	81.85	3.10	3.10	
1,429.00	22.57	267.23	1,404.00	-7.45	-218.85	96.47	3.32	3.32	
1,523.00	24.28	266.19	1,490.25	-9.61	-256.15	112.13	1.87	1.82	
1,618.00	25.73	264.90	1,576.34	-12.74	-296.18	128.22	1.63	1.53	
1,712.00	25.67	263.05	1,661.04	-17.02	-336.71	143.53	0.86	-0.06	
1,806.00	25.28	262.00	1,745.90	-22.27	-376.80	157.77	0.63	-0.41	
1,900.00	25.56	261.12	1,830.80	-28.20	-416.71	171.34	0.50	0.30	
1,995.00	28.66	263.40	1,915.36	-33.98	-459.60	186.43	3.44	3.26	
2,089.00	31.24	264.88	1,996.80	-38.75	-506.28	204.20	2.85	2.74	
2,184.00	31.06	264.84	2,078.10	-43.15	-555.23	223.37	0.19	-0.19	
2,317.00	27.73	263.07	2,193.97	-49.97	-620.13	247.91	2.59	-2.50	
2,364.00	26.90	260.87	2,235.73	-52.98	-641.49	255.31	2.78	-1.77	
2,459.00	32.17	255.16	2,318.37	-62.87	-687.19	268.10	6.28	5.55	
2,553.00	33.05	251.82	2,397.56	-77.28	-735.74	278.25	2.13	0.94	
2,647.00	32.17	248.56	2,476.74	-94.43	-783.39	285.56	2.09	-0.94	
2,742.00	30.72	248.04	2,557.79	-112.75	-829.44	291.08	1.55	-1.53	
2,836.00	32.12	246.37	2,638.01	-131.74	-874.60	295.59	1.75	1.49	
2,931.00	30.54	245.58	2,719.15	-151.85	-919.72	299.10	1.72	-1.66	
3,026.00	33.14	248.83	2,799.85	-171.21	-965.92	303.77	3.28	2.74	
3,120.00	32.30	248.04	2,878.94	-189.88	-1,013.18	309.55	1.00	-0.89	
3,214.00	31.03	247.42	2,958.94	-208.58	-1,058.84	314.56	1.39	-1.35	
3,309.00	31.60	250.94	3,040.11	-226.11	-1,104.98	320.82	2.02	0.60	
3,404.00	30.63	249.62	3,121.44	-242.66	-1,151.19	327.97	1.25	-1.02	
3,498.00	28.61	247.51	3,203.16	-259.61	-1,194.44	333.38	2.42	-2.15	
3,593.00	30.19	249.97	3,285.92	-276.50	-1,237.90	338.95	2.09	1.66	
3,687.00	30.54	252.52	3,367.03	-291.77	-1,282.89	346.66	1.42	0.37	
3,782.00	30.10	251.99	3,449.04	-306.38	-1,328.57	355.27	0.54	-0.46	
3,877.00	30.98	253.75	3,530.86	-320.59	-1,374.70	364.46	1.32	0.93	
3,971.00	28.48	253.31	3,612.48	-333.80	-1,419.40	373.85	2.67	-2.66	
4,066.00	30.81	249.79	3,695.05	-348.71	-1,463.93	381.67	3.06	2.45	
4,160.00	31.69	250.76	3,775.41	-365.16	-1,509.84	388.77	1.08	0.94	
4,255.00	32.34	251.38	3,855.96	-381.50	-1,557.48	396.79	0.77	0.68	
4,372.00	27.69	250.32	3,957.24	-400.66	-1,612.76	405.92	4.00	-3.97	
4,466.00	29.40	252.08	4,039.81	-415.11	-1,655.28	413.19	2.03	1.82	
4,561.00	32.87	252.78	4,121.12	-429.92	-1,702.11	422.17	3.67	3.65	
4,656.00	33.35	251.73	4,200.69	-445.74	-1,751.53	431.48	0.79	0.51	
4,750.00	31.86	252.61	4,279.88	-461.26	-1,799.74	440.50	1.66	-1.59	
4,845.00	30.15	251.99	4,361.30	-476.13	-1,846.36	449.33	1.83	-1.80	
4,939.00	32.17	251.99	4,441.73	-491.17	-1,892.61	457.84	2.15	2.15	
5,034.00	32.26	251.73	4,522.11	-506.93	-1,940.74	466.59	0.17	0.09	
5,128.00	33.75	252.78	4,600.94	-522.53	-1,989.51	475.79	1.70	1.59	
5,223.00	31.99	252.61	4,680.73	-537.86	-2,038.73	485.44	1.86	-1.85	
5,318.00	30.41	251.99	4,761.98	-552.82	-2,085.62	494.33	1.70	-1.66	
5,412.00	26.94	250.41	4,844.44	-567.32	-2,128.32	501.64	3.78	-3.69	
5,506.00	27.64	249.71	4,927.98	-582.02	-2,168.83	507.75	0.82	0.74	
5,601.00	29.09	247.86	5,011.57	-598.37	-2,210.89	513.13	1.78	1.53	
5,695.00	30.41	250.15	5,093.19	-615.06	-2,254.44	518.91	1.85	1.40	
5,789.00	30.54	252.52	5,174.20	-630.31	-2,299.60	526.72	1.29	0.14	

Cathedral Energy Services

Survey Report

Company:	Crestone Peak Resources	Local Co-ordinate Reference:	Well DAVIS 1M-9H-G266 - Slot DAVIS 1M-9H
Project:	DJ BASIN	TVD Reference:	23' KB @ 4940.00usft
Site:	S4-T2N-R66W	MD Reference:	23' KB @ 4940.00usft
Well:	DAVIS 1M-9H-G266	North Reference:	True
Wellbore:	OH	Survey Calculation Method:	Minimum Curvature
Design:	FINAL	Database:	USA EDM 5000 Multi Users DB

Survey									
Measured Depth (usft)	Inclination (°)	Azimuth (°)	Vertical Depth (usft)	+N/-S (usft)	+E/-W (usft)	Vertical Section (usft)	Dogleg Rate (°/100usf)	Build Rate (°/100u)	Formations / Comments
5,883.00	31.55	254.54	5,254.74	-644.04	-2,346.08	536.49	1.54	1.07	
5,978.00	32.39	254.19	5,335.33	-657.60	-2,394.52	547.34	0.91	0.88	
6,072.00	32.30	254.19	5,414.74	-671.30	-2,442.91	558.03	0.10	-0.10	
6,166.00	30.59	254.01	5,494.94	-684.73	-2,490.07	568.39	1.82	-1.82	
6,261.00	26.76	253.22	5,578.27	-697.57	-2,533.80	577.66	4.05	-4.03	
6,355.00	27.55	250.41	5,661.91	-710.97	-2,574.54	585.02	1.60	0.84	
6,450.00	25.53	250.76	5,746.90	-725.08	-2,614.57	591.42	2.13	-2.13	
6,544.00	26.06	250.32	5,831.53	-738.71	-2,653.14	597.55	0.60	0.56	
6,638.00	31.07	250.41	5,914.06	-753.81	-2,695.46	604.16	5.33	5.33	
6,733.00	30.72	249.18	5,995.58	-770.65	-2,741.23	610.86	0.76	-0.37	
6,827.00	30.67	252.34	6,076.42	-786.46	-2,786.52	618.24	1.72	-0.05	
6,922.00	31.95	249.62	6,157.59	-802.56	-2,833.18	625.99	2.01	1.35	
7,017.00	33.14	250.85	6,237.67	-819.84	-2,881.27	633.40	1.43	1.25	
7,111.00	31.42	253.40	6,317.14	-835.27	-2,929.03	642.28	2.33	-1.83	
7,205.00	30.63	252.08	6,397.69	-849.64	-2,975.30	651.39	1.11	-0.84	
7,299.00	30.67	249.44	6,478.56	-865.42	-3,020.53	658.76	1.43	0.04	
7,394.00	31.86	252.34	6,559.77	-881.54	-3,067.11	666.47	2.02	1.25	
7,488.00	31.69	260.78	6,639.92	-893.03	-3,115.15	678.95	4.73	-0.18	
7,535.00	33.05	272.21	6,679.46	-894.51	-3,140.17	689.42	13.32	2.89	
7,582.00	35.20	283.28	6,718.40	-890.90	-3,166.19	704.86	13.96	4.57	
7,629.00	35.51	291.89	6,756.76	-882.70	-3,192.05	724.28	10.61	0.66	
7,676.00	36.83	295.94	6,794.70	-871.45	-3,217.39	746.14	5.81	2.81	
7,723.00	39.68	302.35	6,831.62	-857.25	-3,242.75	770.60	10.39	6.06	
7,771.00	42.14	308.59	6,867.91	-838.99	-3,268.29	798.74	9.93	5.12	
7,818.00	45.26	313.43	6,901.89	-817.67	-3,292.75	829.06	9.73	6.64	
7,865.00	46.27	315.89	6,934.68	-794.00	-3,316.70	861.22	4.32	2.15	
7,912.00	46.49	321.25	6,967.12	-768.51	-3,339.19	894.30	8.27	0.47	
7,959.00	48.38	326.35	6,998.92	-740.58	-3,359.61	928.55	8.94	4.02	
8,006.00	47.55	328.10	7,030.39	-711.23	-3,378.51	963.34	3.28	-1.77	
8,053.00	47.51	330.30	7,062.13	-681.45	-3,396.26	997.97	3.45	-0.09	
8,100.00	49.75	333.91	7,093.20	-650.28	-3,412.73	1,033.23	7.48	4.77	
8,148.00	52.12	336.01	7,123.45	-616.52	-3,428.49	1,070.43	5.99	4.94	
8,195.00	52.52	337.86	7,152.18	-582.30	-3,443.07	1,107.49	3.23	0.85	
8,242.00	54.49	340.76	7,180.13	-546.95	-3,456.40	1,144.95	6.49	4.19	
8,289.00	56.69	341.82	7,206.69	-510.23	-3,468.83	1,183.20	5.04	4.68	
8,337.00	58.23	342.78	7,232.51	-471.68	-3,481.13	1,223.00	3.62	3.21	
8,384.00	59.24	343.75	7,256.90	-433.21	-3,492.70	1,262.38	2.78	2.15	
8,432.00	61.39	344.10	7,280.67	-393.14	-3,504.24	1,303.17	4.52	4.48	
8,479.00	64.29	346.03	7,302.13	-352.74	-3,515.01	1,343.88	7.17	6.17	
8,526.00	68.16	350.08	7,321.08	-310.68	-3,523.89	1,385.17	11.40	8.23	
8,573.00	72.11	352.27	7,337.05	-267.01	-3,530.65	1,426.88	9.48	8.40	
8,621.00	74.44	352.27	7,350.86	-221.46	-3,536.84	1,469.98	4.85	4.85	
8,661.18	74.67	353.02	7,361.56	-183.05	-3,541.79	1,506.20	1.89	0.57	TPZ - 8661.18 (2177 FNL, 299 FWL)
8,668.00	74.71	353.15	7,363.36	-176.52	-3,542.59	1,512.33	1.89	0.58	
8,715.00	77.34	354.38	7,374.71	-131.18	-3,547.54	1,554.66	6.14	5.60	
8,762.00	78.22	356.23	7,384.66	-85.40	-3,551.29	1,596.81	4.28	1.87	
8,809.00	79.10	357.64	7,393.90	-39.39	-3,553.76	1,638.57	3.49	1.87	
8,856.00	80.90	357.28	7,402.06	6.85	-3,555.81	1,680.32	3.90	3.83	
8,904.00	83.15	359.04	7,408.72	54.36	-3,557.33	1,722.95	5.93	4.69	
8,951.00	87.72	1.33	7,412.46	101.19	-3,557.18	1,764.20	10.87	9.72	
8,998.00	88.55	0.18	7,413.99	148.16	-3,556.56	1,805.34	3.02	1.77	
9,093.00	88.64	0.01	7,416.32	243.13	-3,556.40	1,889.05	0.20	0.09	
9,187.00	88.11	359.57	7,418.99	337.09	-3,556.75	1,972.11	0.73	-0.56	

Cathedral Energy Services

Survey Report

Company:	Crestone Peak Resources	Local Co-ordinate Reference:	Well DAVIS 1M-9H-G266 - Slot DAVIS 1M-9H
Project:	DJ BASIN	TVD Reference:	23' KB @ 4940.00usft
Site:	S4-T2N-R66W	MD Reference:	23' KB @ 4940.00usft
Well:	DAVIS 1M-9H-G266	North Reference:	True
Wellbore:	OH	Survey Calculation Method:	Minimum Curvature
Design:	FINAL	Database:	USA EDM 5000 Multi Users DB

Survey									
Measured Depth (usft)	Inclination (°)	Azimuth (°)	Vertical Depth (usft)	+N/-S (usft)	+E/-W (usft)	Vertical Section (usft)	Dogleg Rate (°/100usf)	Build Rate (°/100u)	Formations / Comments
9,282.00	88.24	359.75	7,422.01	432.04	-3,557.31	2,056.14	0.23	0.14	
9,376.00	88.20	359.66	7,424.93	526.00	-3,557.79	2,139.25	0.10	-0.04	
9,471.00	88.77	0.54	7,427.44	620.96	-3,557.63	2,222.96	1.10	0.60	
9,566.00	90.62	358.69	7,427.95	715.95	-3,558.27	2,307.06	2.75	1.95	
9,660.00	91.32	358.87	7,426.36	809.91	-3,560.27	2,390.89	0.77	0.74	
9,755.00	91.45	359.57	7,424.06	904.88	-3,561.56	2,475.28	0.75	0.14	
9,849.00	91.23	357.37	7,421.86	998.81	-3,564.07	2,559.33	2.35	-0.23	
9,943.00	91.23	357.55	7,419.85	1,092.70	-3,568.23	2,644.12	0.19	0.00	
10,037.00	90.70	358.08	7,418.26	1,186.62	-3,571.82	2,728.66	0.80	-0.56	
10,131.00	90.00	358.08	7,417.69	1,280.56	-3,574.97	2,813.02	0.74	-0.74	
10,226.00	91.27	357.64	7,416.64	1,375.49	-3,578.51	2,898.44	1.41	1.34	
10,321.00	91.06	357.20	7,414.70	1,470.37	-3,582.79	2,984.16	0.51	-0.22	
10,416.00	91.10	358.34	7,412.91	1,565.28	-3,586.49	3,069.63	1.20	0.04	
10,510.00	90.57	358.16	7,411.54	1,659.23	-3,589.36	3,153.86	0.60	-0.56	
10,604.00	91.89	359.04	7,409.53	1,753.17	-3,591.65	3,237.82	1.69	1.40	
10,699.00	91.36	0.01	7,406.83	1,848.13	-3,592.44	3,321.97	1.16	-0.56	
10,793.00	92.29	0.45	7,403.84	1,942.08	-3,592.06	3,404.67	1.09	0.99	
10,887.00	92.46	1.06	7,399.94	2,035.99	-3,590.82	3,486.94	0.67	0.18	
10,982.00	92.64	0.54	7,395.72	2,130.89	-3,589.50	3,570.03	0.58	0.19	
11,076.00	90.79	0.80	7,392.90	2,224.83	-3,588.40	3,652.40	1.99	-1.97	
11,171.00	90.97	0.62	7,391.44	2,319.82	-3,587.22	3,735.64	0.27	0.19	
11,265.00	91.71	1.33	7,389.25	2,413.78	-3,585.63	3,817.77	1.09	0.79	
11,360.00	90.31	359.83	7,387.57	2,508.75	-3,584.66	3,901.11	2.16	-1.47	
11,454.00	90.09	359.48	7,387.24	2,602.75	-3,585.23	3,984.30	0.44	-0.23	
11,548.00	90.13	359.75	7,387.06	2,696.75	-3,585.86	4,067.52	0.29	0.04	
11,643.00	89.74	359.57	7,387.17	2,791.74	-3,586.43	4,151.60	0.45	-0.41	
11,737.00	89.43	358.95	7,387.85	2,885.73	-3,587.64	4,235.09	0.74	-0.33	
11,831.00	89.65	358.69	7,388.61	2,979.71	-3,589.57	4,318.91	0.36	0.23	
11,925.00	90.70	0.10	7,388.32	3,073.70	-3,590.57	4,402.29	1.87	1.12	
12,019.00	90.66	358.78	7,387.20	3,167.69	-3,591.49	4,485.64	1.40	-0.04	
12,114.00	90.44	357.72	7,386.29	3,262.64	-3,594.39	4,570.77	1.14	-0.23	
12,208.00	90.22	359.13	7,385.75	3,356.60	-3,596.97	4,654.88	1.52	-0.23	
12,302.00	88.95	0.01	7,386.43	3,450.59	-3,597.68	4,738.14	1.64	-1.35	
12,396.00	90.09	0.36	7,387.22	3,544.58	-3,597.37	4,820.92	1.27	1.21	
12,490.00	89.03	359.31	7,387.94	3,638.58	-3,597.64	4,903.97	1.59	-1.13	
12,585.00	89.87	359.92	7,388.85	3,733.57	-3,598.28	4,988.07	1.09	0.88	
12,680.00	89.34	358.78	7,389.51	3,828.56	-3,599.36	5,072.38	1.32	-0.56	
12,774.00	89.17	358.08	7,390.73	3,922.52	-3,601.93	5,156.48	0.77	-0.18	
12,869.00	89.08	357.46	7,392.18	4,017.43	-3,605.63	5,241.96	0.66	-0.09	
12,963.00	90.00	358.69	7,392.93	4,111.37	-3,608.79	5,326.32	1.63	0.98	
13,058.00	89.87	359.75	7,393.04	4,206.36	-3,610.08	5,410.73	1.12	-0.14	
13,152.00	90.66	0.54	7,392.61	4,300.36	-3,609.84	5,493.54	1.19	0.84	
13,246.00	91.54	0.01	7,390.80	4,394.34	-3,609.39	5,576.24	1.09	0.94	
13,341.00	92.07	0.36	7,387.81	4,489.29	-3,609.09	5,659.86	0.67	0.56	
13,435.00	90.09	359.92	7,386.04	4,583.27	-3,608.86	5,742.66	2.16	-2.11	
13,530.00	90.26	359.31	7,385.75	4,678.27	-3,609.49	5,826.77	0.67	0.18	
13,624.00	90.70	1.42	7,384.96	4,772.26	-3,608.90	5,909.41	2.29	0.47	
13,718.00	91.58	1.15	7,383.09	4,866.21	-3,606.79	5,991.30	0.98	0.94	
13,813.00	89.78	1.59	7,381.96	4,961.18	-3,604.52	6,074.01	1.95	-1.89	
13,907.00	90.04	0.71	7,382.11	5,055.16	-3,602.63	6,156.03	0.98	0.28	
14,002.00	89.25	1.59	7,382.70	5,150.13	-3,600.72	6,238.92	1.24	-0.83	
14,097.00	89.03	0.71	7,384.13	5,245.10	-3,598.82	6,321.81	0.95	-0.23	
14,191.00	88.73	1.24	7,385.96	5,339.07	-3,597.22	6,403.96	0.65	-0.32	

Cathedral Energy Services

Survey Report

Company:	Crestone Peak Resources	Local Co-ordinate Reference:	Well DAVIS 1M-9H-G266 - Slot DAVIS 1M-9H
Project:	DJ BASIN	TVD Reference:	23' KB @ 4940.00usft
Site:	S4-T2N-R66W	MD Reference:	23' KB @ 4940.00usft
Well:	DAVIS 1M-9H-G266	North Reference:	True
Wellbore:	OH	Survey Calculation Method:	Minimum Curvature
Design:	FINAL	Database:	USA EDM 5000 Multi Users DB

Survey									
Measured Depth (usft)	Inclination (°)	Azimuth (°)	Vertical Depth (usft)	+N/-S (usft)	+E/-W (usft)	Vertical Section (usft)	Dogleg Rate (°/100usf)	Build Rate (°/100u)	Formations / Comments
14,286.00	88.55	0.98	7,388.22	5,434.03	-3,595.38	6,486.86	0.33	-0.19	
14,380.00	88.37	2.12	7,390.74	5,527.96	-3,592.84	6,568.53	1.23	-0.19	
14,474.00	89.56	0.98	7,392.44	5,621.90	-3,590.29	6,650.21	1.75	1.27	
14,569.00	91.32	1.59	7,391.71	5,716.87	-3,588.16	6,732.99	1.96	1.85	
14,663.00	92.24	0.80	7,388.79	5,810.80	-3,586.20	6,814.94	1.29	0.98	
14,758.00	91.76	359.75	7,385.48	5,905.74	-3,585.75	6,898.48	1.21	-0.51	
14,852.00	92.59	0.01	7,381.91	5,999.68	-3,585.95	6,981.44	0.93	0.88	
14,947.00	90.66	358.16	7,379.22	6,094.62	-3,587.46	7,065.91	2.81	-2.03	
15,042.00	91.41	357.81	7,377.50	6,189.54	-3,590.80	7,151.23	0.87	0.79	
15,136.00	91.32	357.20	7,375.26	6,283.43	-3,594.89	7,235.98	0.66	-0.10	
15,230.00	89.47	358.60	7,374.61	6,377.35	-3,598.34	7,320.46	2.47	-1.97	
15,325.00	88.86	357.02	7,376.00	6,472.27	-3,601.97	7,405.91	1.78	-0.64	
15,419.00	88.95	356.49	7,377.79	6,566.10	-3,607.29	7,491.19	0.57	0.10	
15,513.00	88.59	356.32	7,379.81	6,659.90	-3,613.18	7,576.71	0.42	-0.38	
15,552.00	88.59	355.44	7,380.77	6,698.78	-3,615.98	7,612.34	2.26	0.00	LAST SURVEY - 15552.00' MD
15,612.00	88.59	355.44	7,382.25	6,758.57	-3,620.75	7,667.33	0.00	0.00	PTB - 15612.00' MD (462 FNL, 204 FWL)

Targets									
Target Name	Dip Angle (°)	Dip Dir. (°)	TVD (usft)	+N/-S (usft)	+E/-W (usft)	Northing (usft)	Easting (usft)	Latitude	Longitude
DAVIS 1M 1416' N - hit/miss target - Shape - Point	0.00	0.00	7,417.00	1,416.00	-3,577.16	1,301,288.27	3,198,237.28	40.158255	-104.790744
- actual wellpath misses target center by 3.33usft at 10266.40usft MD (7415.77 TVD, 1415.84 N, -3580.24 E)									
DAVIS 1M-9H-G266 TPZ - actual wellpath misses target center by 59.54usft at 8677.54usft MD (7365.83 TVD, -167.36 N, -3543.67 E) - Point	0.00	0.00	7,418.00	-183.05	-3,567.69	1,299,689.35	3,198,259.77	40.153865	-104.790710
DAVIS 1M 3651' N - actual wellpath misses target center by 30.76usft at 12502.66usft MD (7388.14 TVD, 3651.24 N, -3597.79 E) - Point	0.00	0.00	7,418.00	3,651.00	-3,590.38	1,303,523.08	3,198,205.86	40.164390	-104.790793
DAVIS 1M-9H-G266 BHI - actual wellpath misses target center by 28.52usft at 15612.00usft MD (7382.25 TVD, 6758.57 N, -3620.75 E) - Point	0.00	0.00	7,408.00	6,761.25	-3,608.79	1,306,633.08	3,198,162.12	40.172928	-104.790860

Design Annotations					
Measured Depth (usft)	Vertical Depth (usft)	Local Coordinates		Comment	
		+N/-S (usft)	+E/-W (usft)		
8,661.18	7,361.56	-183.05	-3,541.79	TPZ - 8661.18 (2177 FNL, 299 FWL)	
15,552.00	7,380.77	6,698.78	-3,615.98	LAST SURVEY - 15552.00' MD	
15,612.00	7,382.25	6,758.57	-3,620.75	PTB - 15612.00' MD (462 FNL, 204 FWL)	

Checked By: _____ Approved By: _____ Date: _____