



CRESTONE PEAK
RESOURCES

SECTION DETAILS

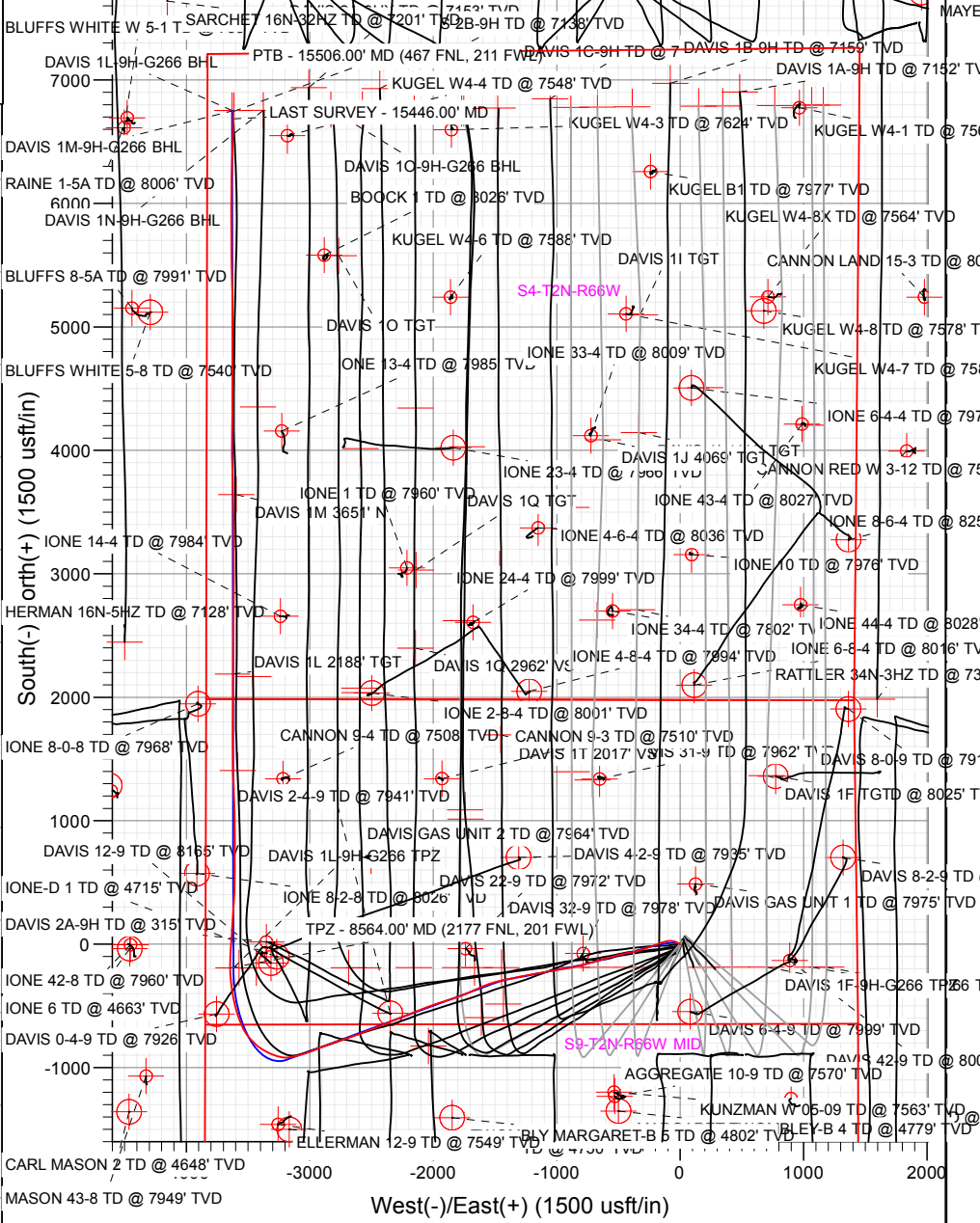
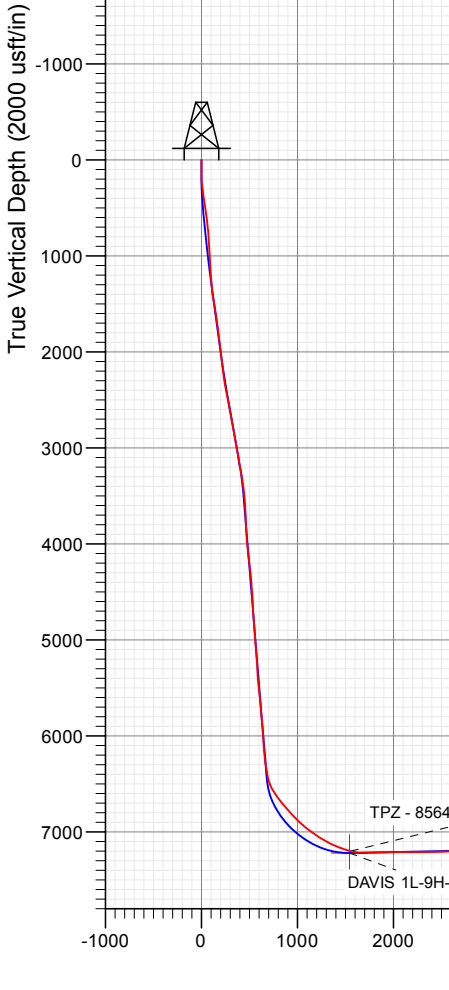
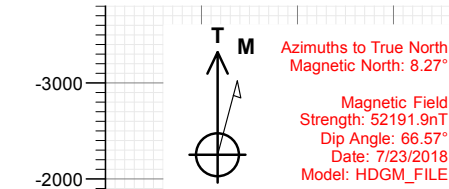
Sec	MD	Inc	Azi	TVD	+N/-S	+E/-W	Dleg	TFace	VSect	Target
1	0.00	0.00	0.00	0.00	0.00	0.00	0.00	0.00	0.00	
2	150.00	0.00	0.00	150.00	0.00	0.00	0.00	0.00	0.00	
3	500.00	7.00	290.00	499.13	7.30	-20.07	2.00	290.00	15.93	
4	1332.00	30.40	255.00	1283.28	-30.44	-275.09	3.00	-43.46	103.41	
5	2332.00	30.40	255.00	2145.79	-161.41	-763.88	0.00	0.00	219.42	
6	2399.46	30.40	259.00	2203.98	-169.09	-797.13	3.00	91.73	228.40	
7	3599.46	30.40	259.00	3239.00	-284.95	-1393.21	0.00	0.00	408.51	
8	3834.35	30.64	249.75	3441.46	-317.02	-1507.76	2.00	-91.10	434.48	
9	7343.16	30.64	249.75	6460.47	-935.81	-3185.39	0.00	0.00	683.57	
10	8655.54	91.07	359.92	7221.00	-191.78	-3618.64	7.70	107.01	1544.04	DAVIS 1L-9H-G266 TPZ
11	8655.73	91.07	359.92	7221.00	-191.60	-3618.64	2.00	-69.51	1544.20	
12	10982.17	91.07	359.92	7177.50	2134.44	-3622.03	0.00	0.00	3594.72	
13	11035.74	90.00	359.92	7177.00	2188.00	-3622.11	2.00	180.00	3641.94	DAVIS 1L 2188' TGT
14	15600.17	90.00	359.92	7177.00	6752.43	-3628.75	0.00	0.00	7665.71	DAVIS 1L-9H-G266 BHL

FINAL
DAVIS 1L-9H-G266
371437 185119 385937 185225
23 KIS @ 4940.00ust
Ground Level @ 4917.00
North American Datum 1983
Well DAVIS 1L-9H-G266 - Slot DAVIS 1L-9H, True North

Type	Target	Asimuth	Origin	Type	N/S	E/W	From TVD
User	No Target (Freehand)	331.75	Slot		0.00	0.00	0.00

Name	TVD	+N/-S	+E/-W	Latitude	Longitude
DAVIS 1L 2188' TGT	7177.00	2188.00	-3622.11	40.160398	-104.790888
DAVIS 1L-9H-G266 BHL	7177.00	6752.43	-3628.75	40.172328	-104.790914
DAVIS 1L-9H-G266 TPZ	7221.00	-191.78	-3618.64	40.153865	-104.790874

Project: DJ BASIN
Site: S4-T2N-R66W
Well: DAVIS 1L-9H-G266
Wellbore: OH
Design: FINAL



WELL DETAILS: DAVIS 1L-9H-G266

+N/-S	+E/-W	Northing	Easting	Latitude	Longitude	DAVIS 1L-9H
0.00	0.00	1299910.16	3201830.74	40.154392	-104.777928	

CATHEDRAL





CRESTONE PEAK
RESOURCES

SECTION DETAILS

Sec	MD	Inc	Azi	TVD	+N/-S	+E/-W	Dleg	TFace	VSect	Target
1	0.00	0.00	0.00	0.00	0.00	0.00	0.00	0.00	0.00	
2	150.00	0.00	0.00	150.00	0.00	0.00	0.00	0.00	0.00	
3	500.00	7.00	290.00	499.13	7.30	-20.07	2.00	290.00	15.93	
4	1332.00	30.40	255.00	1283.28	-30.44	-275.09	3.00	-43.46	103.41	
5	2332.00	30.40	255.00	2145.79	-161.41	-763.88	0.00	0.00	219.42	
6	2399.46	30.40	259.00	2203.98	-169.09	-797.13	3.00	91.73	228.40	
7	3599.46	30.40	259.00	3239.00	-284.95	-1393.21	0.00	0.00	408.51	
8	3834.35	30.64	249.75	3441.46	-317.02	-1507.76	2.00	-91.10	434.48	
9	7343.16	30.64	249.75	6460.47	-935.81	-3185.39	0.00	0.00	683.57	
10	8655.54	91.07	359.92	7221.00	-191.78	-3618.64	7.70	107.01	1544.04	DAVIS 1L-9H-G266 TPZ
11	8655.73	91.07	359.92	7221.00	-191.60	-3618.64	2.00	-69.51	1544.20	
12	10982.17	91.07	359.92	7177.50	2134.44	-3622.03	0.00	0.00	3594.72	
13	11035.74	90.00	359.92	7177.00	2188.00	-3622.11	2.00	180.00	3641.94	DAVIS 1L 2188' TGT
14	15600.17	90.00	359.92	7177.00	6752.43	-3628.75	0.00	0.00	7665.71	DAVIS 1L-9H-G266 BHL

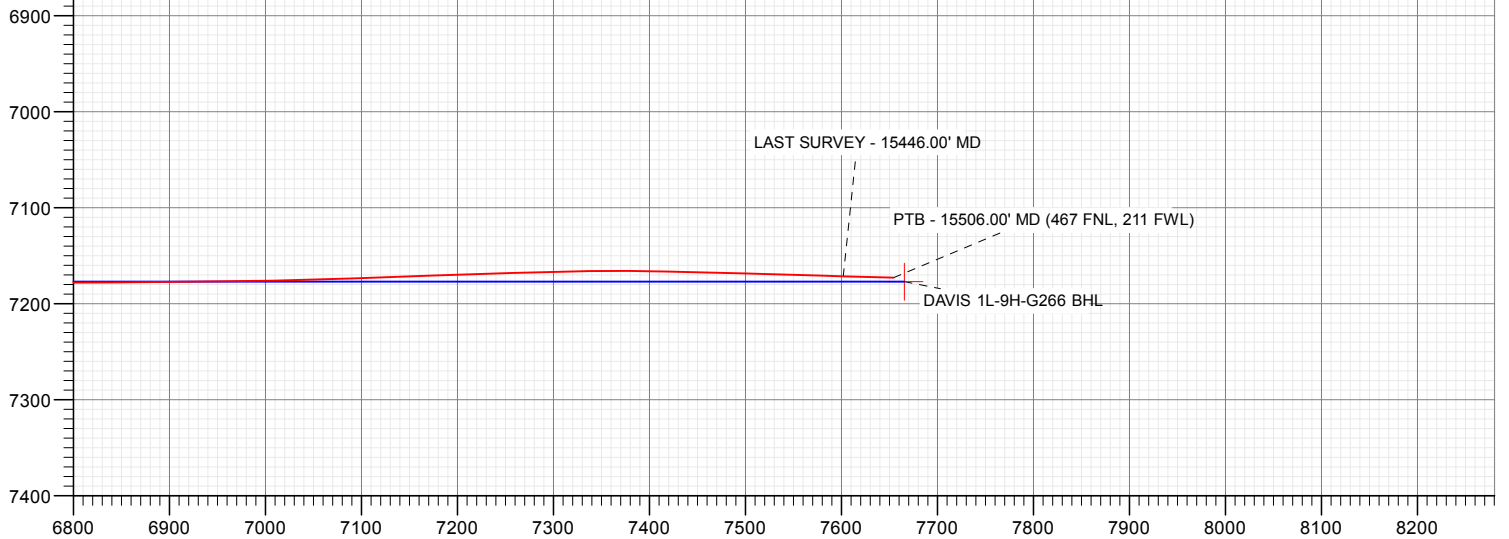
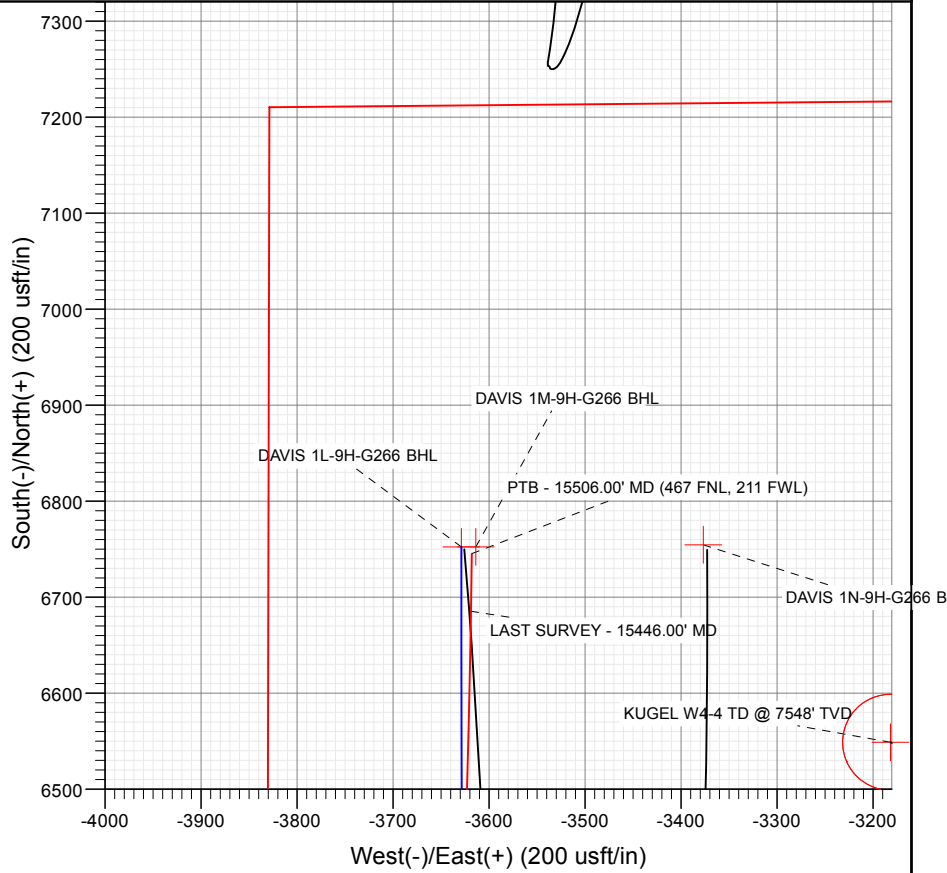
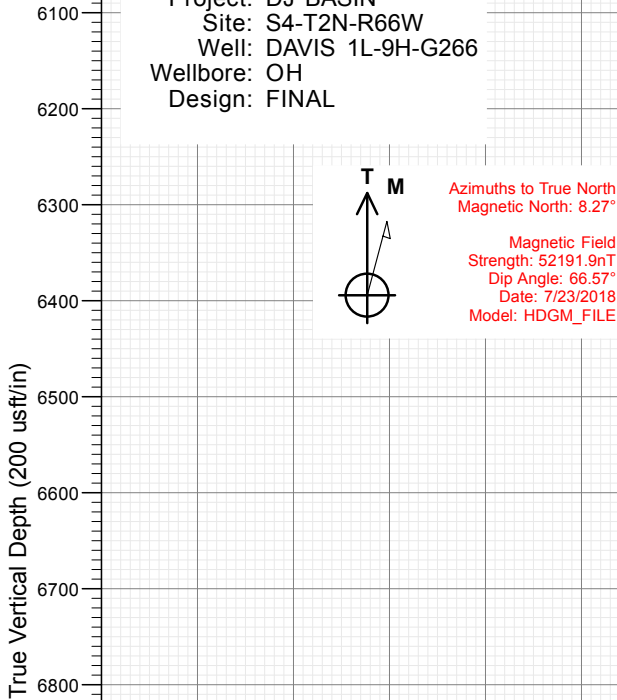
FINAL
DAVIS 1L-9H-G266
371437 185119 385937 185225
23 KG @ 4940.00usft
Ground Level @ 4917.00
North American Datum 1983
Well DAVIS 1L-9H-G266 - Sect DAVIS 1L-9H, True North

Type	Target	Asimuth	Origin	Type	N/S	E/W	From	TVD
User	No Target (Freehand)	331.75	Slct		0.00	0.00	0.00	0.00
Name		TVD	+N/-S	+E/-W	Latitude	Longitude		
DAVIS 1L 2188' TGT		7177.00	2188.00	-3622.11	40.160398	-104.790888		
DAVIS 1L-9H-G266 BHL		7177.00	6752.43	-3628.75	40.172528	-104.790914		
DAVIS 1L-9H-G266 TPZ		7221.00	-191.78	-3618.64	40.153895	-104.790974		

Project: DJ BASIN
Site: S4-T2N-R66W
Well: DAVIS 1L-9H-G266
Wellbore: OH
Design: FINAL



Azimuths to True North
Magnetic North: 8.27°
Magnetic Field
Strength: 52191.9nT
Dip Angle: 66.57°
Date: 7/23/2018
Model: HDGM_FILE



WELL DETAILS: DAVIS 1L-9H-G266

+N/-S	+E/-W	Northing	Easting	Latitude	Longitude	DAVIS 1L-9H
0.00	0.00	1299910.16	3201830.74	40.154392	-104.777928	

CATHEDRAL



Survey Report

Company: Crestone Peak Resources	Local Co-ordinate Reference: Well DAVIS 1L-9H-G266 - Slot DAVIS 1L-9H
Project: DJ BASIN	TVD Reference: 23' KB @ 4940.00usft
Site: S4-T2N-R66W	MD Reference: 23' KB @ 4940.00usft
Well: DAVIS 1L-9H-G266	North Reference: True
Wellbore: OH	Survey Calculation Method: Minimum Curvature
Design: FINAL	Database: USA EDM 5000 Multi Users DB

Project DJ BASIN		
Map System: US State Plane 1983	System Datum:	Mean Sea Level
Geo Datum: North American Datum 1983		
Map Zone: Colorado Northern Zone		

Site S4-T2N-R66W				
Site Position:	Northing:	1,300,048.95 usft	Latitude:	40.154783
From: Map	Easting:	3,201,389.75 usft	Longitude:	-104.779502
Position Uncertainty: 0.00 usft	Slot Radius:	13-3/16"	Grid Convergence:	0.47 °

Well DAVIS 1L-9H-G266 - Slot DAVIS 1L-9H				
Well Position	+N/-S	0.00 usft	Northing:	1,299,910.16 usft
	+E/-W	0.00 usft	Easting:	3,201,830.74 usft
Position Uncertainty		0.00 usft	Wellhead Elevation:	usft
			Latitude:	40.154392
			Longitude:	-104.777928
			Ground Level:	4,917.00 usft

Wellbore OH					
Magnetics	Model Name	Sample Date	Declination (°)	Dip Angle (°)	Field Strength (nT)
	HDGM_FILE	7/23/2018	8.27	66.57	52,191.90000000

Design FINAL				
Audit Notes:				
Version:	1.0	Phase:	ACTUAL	Tie On Depth: 0.00
Vertical Section:	Depth From (TVD) (usft)	+N/-S (usft)	+E/-W (usft)	Direction (°)
	0.00	0.00	0.00	331.75

Survey Program		Date 7/27/2018
From (usft)	To (usft)	Survey (Wellbore)
97.00	2,205.00	Survey #1 (OH)
2,337.00	15,506.00	Survey #2 (OH)
		Tool Name
		VESSI_GYROFLEX
		MWD+HDGM
		Description
		VESSI Gyroflex Gyro
		OWSG MWD + HDGM

Survey									
Measured Depth (usft)	Inclination (°)	Azimuth (°)	Vertical Depth (usft)	+N/-S (usft)	+E/-W (usft)	Vertical Section (usft)	Dogleg Rate (°/100usft)	Build Rate (°/100u)	Formations / Comments
0.00	0.00	0.00	0.00	0.00	0.00	0.00	0.00	0.00	
97.00	0.46	314.27	97.00	0.27	-0.28	0.37	0.47	0.47	
137.00	0.81	293.61	137.00	0.50	-0.65	0.75	1.03	0.87	
168.00	2.10	298.62	167.99	0.86	-1.35	1.39	4.18	4.16	
200.00	3.36	299.94	199.95	1.61	-2.68	2.68	3.94	3.94	
231.00	5.00	298.80	230.87	2.71	-4.65	4.59	5.30	5.29	
325.00	8.95	299.77	324.15	8.32	-14.59	14.23	4.20	4.20	
393.00	10.86	296.40	391.14	13.79	-24.92	23.94	2.93	2.81	
488.00	12.04	287.62	484.25	20.77	-42.38	38.36	2.21	1.24	
582.00	12.12	277.64	576.18	25.05	-61.51	51.18	2.22	0.09	
677.00	14.75	269.43	668.58	26.26	-83.49	62.65	3.41	2.77	
771.00	16.54	258.60	759.11	23.49	-108.58	72.09	3.64	1.90	

Survey Report

Company:	Crestone Peak Resources	Local Co-ordinate Reference:	Well DAVIS 1L-9H-G266 - Slot DAVIS 1L-9H
Project:	DJ BASIN	TD Reference:	23' KB @ 4940.00usft
Site:	S4-T2N-R66W	MVD Reference:	23' KB @ 4940.00usft
Well:	DAVIS 1L-9H-G266	North Reference:	True
Wellbore:	OH	Survey Calculation Method:	Minimum Curvature
Design:	FINAL	Database:	USA EDM 5000 Multi Users DB

Survey									
Measured Depth (usft)	Inclination (°)	Azimuth (°)	Vertical Depth (usft)	+N/-S (usft)	+E/-W (usft)	Vertical Section (usft)	Dogleg Rate (°/100usf)	Build Rate (°/100u)	Formations / Comments
866.00	17.69	251.02	849.92	16.12	-135.49	78.33	2.64	1.21	
960.00	17.50	250.81	939.52	6.83	-162.34	82.86	0.21	-0.20	
1,055.00	20.02	249.71	1,029.46	-3.50	-191.09	87.36	2.68	2.65	
1,149.00	25.31	252.18	1,116.18	-15.24	-225.34	93.23	5.72	5.63	
1,244.00	24.35	251.45	1,202.39	-27.69	-263.24	100.21	1.06	-1.01	
1,338.00	25.29	249.49	1,287.71	-40.89	-300.42	106.18	1.33	1.00	
1,433.00	27.95	254.55	1,372.64	-53.93	-340.89	113.85	3.68	2.80	
1,527.00	29.66	257.74	1,455.01	-64.74	-384.86	125.13	2.45	1.82	
1,621.00	32.19	259.15	1,535.65	-74.39	-432.19	139.03	2.80	2.69	
1,715.00	30.40	258.75	1,615.97	-83.75	-480.11	153.47	1.92	-1.90	
1,810.00	29.90	255.51	1,698.12	-94.36	-526.61	166.13	1.79	-0.53	
1,904.00	29.22	252.86	1,779.89	-106.99	-571.22	176.13	1.57	-0.72	
1,999.00	28.18	252.51	1,863.22	-120.56	-614.78	184.78	1.11	-1.09	
2,093.00	28.42	255.25	1,945.98	-132.93	-657.58	194.15	1.41	0.26	
2,205.00	29.44	256.40	2,044.01	-146.19	-710.11	207.33	1.04	0.91	
2,337.00	28.17	253.39	2,159.68	-162.72	-771.50	221.83	1.46	-0.96	
2,369.00	27.99	253.65	2,187.91	-167.00	-785.95	224.90	0.68	-0.56	
2,463.00	29.00	256.11	2,270.53	-178.68	-829.23	235.10	1.65	1.07	
2,558.00	30.89	259.36	2,352.85	-188.71	-875.56	248.19	2.62	1.99	
2,652.00	31.99	261.12	2,433.05	-197.01	-923.88	263.75	1.52	1.17	
2,747.00	29.71	260.24	2,514.60	-204.88	-971.95	279.56	2.45	-2.40	
2,841.00	31.51	260.33	2,595.50	-212.96	-1,019.13	294.78	1.92	1.91	
2,936.00	29.36	259.72	2,677.40	-221.29	-1,066.52	309.88	2.29	-2.26	
3,030.00	31.03	260.33	2,758.65	-229.47	-1,113.08	324.71	1.81	1.78	
3,125.00	30.76	259.98	2,840.17	-237.81	-1,161.14	340.11	0.34	-0.28	
3,219.00	29.84	259.72	2,921.32	-246.16	-1,207.83	354.84	0.99	-0.98	
3,314.00	32.26	259.10	3,002.71	-255.18	-1,255.98	369.70	2.57	2.55	
3,409.00	31.25	258.66	3,083.48	-264.82	-1,305.04	384.43	1.09	-1.06	
3,503.00	29.18	258.05	3,164.71	-274.36	-1,351.37	397.95	2.23	-2.20	
3,598.00	30.54	257.69	3,247.10	-284.30	-1,397.61	411.08	1.44	1.43	
3,692.00	32.61	258.57	3,327.18	-294.41	-1,445.78	424.97	2.26	2.20	
3,787.00	31.25	254.97	3,407.81	-305.88	-1,494.68	438.02	2.46	-1.43	
3,881.00	29.14	251.28	3,489.06	-319.55	-1,539.91	447.38	2.99	-2.24	
3,976.00	30.15	248.20	3,571.62	-335.83	-1,583.97	453.89	1.92	1.06	
4,070.00	31.51	246.00	3,652.34	-354.59	-1,628.33	458.37	1.88	1.45	
4,165.00	29.09	244.60	3,734.36	-374.60	-1,671.88	461.35	2.65	-2.55	
4,259.00	27.55	246.88	3,817.11	-392.94	-1,712.52	464.43	2.00	-1.64	
4,377.00	28.48	248.47	3,921.28	-413.98	-1,763.79	470.17	1.01	0.79	
4,471.00	29.44	251.45	4,003.53	-429.55	-1,806.54	476.68	1.84	1.02	
4,566.00	32.52	252.95	4,084.97	-444.47	-1,853.10	485.58	3.34	3.24	
4,661.00	35.99	251.81	4,163.48	-460.68	-1,904.05	495.42	3.71	3.65	
4,755.00	34.89	251.72	4,240.06	-477.73	-1,955.82	504.90	1.17	-1.17	
4,850.00	32.12	250.84	4,319.27	-494.55	-2,005.48	513.59	2.96	-2.92	
4,944.00	28.35	249.34	4,400.47	-510.63	-2,049.99	520.49	4.09	-4.01	
5,039.00	30.23	249.08	4,483.32	-527.13	-2,093.43	526.52	1.98	1.98	
5,133.00	27.55	247.59	4,565.62	-543.87	-2,135.64	531.75	2.95	-2.85	
5,228.00	26.76	248.64	4,650.15	-560.03	-2,175.87	536.55	0.97	-0.83	
5,323.00	30.59	248.73	4,733.48	-576.60	-2,218.33	542.06	4.03	4.03	
5,417.00	31.25	248.29	4,814.12	-594.29	-2,263.27	547.74	0.74	0.70	
5,512.00	32.04	246.27	4,895.00	-613.55	-2,309.24	552.54	1.39	0.83	
5,606.00	33.22	249.34	4,974.16	-632.67	-2,356.16	557.90	2.16	1.26	
5,700.00	34.63	249.26	5,052.16	-651.22	-2,405.24	564.79	1.50	1.50	
5,794.00	33.44	248.99	5,130.06	-669.96	-2,454.39	571.55	1.28	-1.27	

Survey Report

Company:	Crestone Peak Resources	Local Co-ordinate Reference:	Well DAVIS 1L-9H-G266 - Slot DAVIS 1L-9H
Project:	DJ BASIN	TVD Reference:	23' KB @ 4940.00usft
Site:	S4-T2N-R66W	MD Reference:	23' KB @ 4940.00usft
Well:	DAVIS 1L-9H-G266	North Reference:	True
Wellbore:	OH	Survey Calculation Method:	Minimum Curvature
Design:	FINAL	Database:	USA EDM 5000 Multi Users DB

Survey									
Measured Depth (usft)	Inclination (°)	Azimuth (°)	Vertical Depth (usft)	+N/-S (usft)	+E/-W (usft)	Vertical Section (usft)	Dogleg Rate (°/100usf)	Build Rate (°/100u)	Formations / Comments
5,888.00	31.60	248.11	5,209.32	-688.43	-2,501.43	577.54	2.02	-1.96	
5,983.00	28.87	248.03	5,291.38	-706.29	-2,545.80	582.81	2.87	-2.87	
6,077.00	28.83	248.38	5,373.72	-723.13	-2,587.91	587.91	0.18	-0.04	
6,172.00	28.52	251.28	5,457.07	-738.85	-2,630.69	594.31	1.50	-0.33	
6,266.00	29.18	251.54	5,539.40	-753.31	-2,673.68	601.92	0.71	0.70	
6,360.00	30.10	252.51	5,621.10	-767.65	-2,717.90	610.22	1.10	0.98	
6,455.00	31.16	249.96	5,702.85	-783.23	-2,763.71	618.18	1.76	1.12	
6,549.00	29.84	251.10	5,783.84	-799.14	-2,808.69	625.45	1.53	-1.40	
6,643.00	30.94	249.70	5,864.93	-815.10	-2,853.48	632.59	1.39	1.17	
6,738.00	31.33	249.26	5,946.24	-832.32	-2,899.48	639.20	0.48	0.41	
6,832.00	29.58	248.20	6,027.27	-849.59	-2,943.88	645.00	1.95	-1.86	
6,927.00	30.50	247.41	6,109.51	-867.56	-2,987.91	650.01	1.05	0.97	
7,022.00	29.18	251.54	6,191.92	-884.16	-3,032.14	656.32	2.57	-1.39	
7,116.00	30.41	254.88	6,273.50	-897.62	-3,076.85	665.63	2.20	1.31	
7,210.00	31.47	259.45	6,354.13	-908.32	-3,123.95	678.49	2.74	1.13	
7,304.00	29.97	260.95	6,434.94	-916.51	-3,171.26	693.68	1.79	-1.60	
7,351.00	32.61	270.88	6,475.13	-918.16	-3,195.54	703.71	12.31	5.62	
7,399.00	37.05	277.56	6,514.53	-916.06	-3,222.83	718.48	12.18	9.25	
7,446.00	39.38	283.71	6,551.47	-910.66	-3,251.36	736.74	9.49	4.96	
7,493.00	40.91	289.25	6,587.41	-902.05	-3,280.39	758.07	8.26	3.26	
7,540.00	41.48	293.29	6,622.78	-890.82	-3,309.22	781.60	5.79	1.21	
7,587.00	43.07	295.49	6,657.56	-877.76	-3,338.01	806.74	4.62	3.38	
7,634.00	43.24	298.91	6,691.85	-863.07	-3,366.59	833.21	4.99	0.36	
7,681.00	43.59	303.75	6,726.00	-846.28	-3,394.16	861.05	7.12	0.74	
7,728.00	44.25	310.16	6,759.87	-826.69	-3,420.18	890.62	9.56	1.40	
7,776.00	43.81	312.63	6,794.39	-804.63	-3,445.20	921.89	3.69	-0.92	
7,823.00	44.21	315.53	6,828.19	-781.92	-3,468.66	953.00	4.37	0.85	
7,870.00	44.78	319.57	6,861.73	-757.62	-3,490.87	984.92	6.14	1.21	
7,917.00	46.71	325.19	6,894.54	-730.96	-3,511.38	1,018.11	9.50	4.11	
7,964.00	49.53	329.76	6,925.92	-701.46	-3,530.16	1,052.99	9.40	6.00	
8,011.00	51.37	335.13	6,955.86	-669.34	-3,546.89	1,089.20	9.64	3.91	
8,059.00	52.95	339.26	6,985.31	-634.41	-3,561.57	1,126.92	7.55	3.29	
8,106.00	54.27	340.57	7,013.20	-598.87	-3,574.56	1,164.36	3.59	2.81	
8,153.00	56.82	343.21	7,039.79	-562.04	-3,586.59	1,202.50	7.13	5.43	
8,200.00	58.40	344.62	7,064.96	-523.91	-3,597.58	1,241.30	4.21	3.36	
8,247.00	60.73	346.73	7,088.77	-484.65	-3,607.60	1,280.62	6.29	4.96	
8,294.00	63.94	348.05	7,110.59	-444.03	-3,616.67	1,320.70	7.27	6.83	
8,342.00	66.05	349.36	7,130.88	-401.38	-3,625.19	1,362.30	5.04	4.40	
8,389.00	68.95	351.91	7,148.87	-358.54	-3,632.24	1,403.38	7.95	6.17	
8,437.00	70.80	354.02	7,165.39	-313.82	-3,637.76	1,445.38	5.65	3.85	
8,484.00	72.95	355.96	7,180.01	-269.32	-3,641.65	1,486.42	6.03	4.57	
8,531.00	75.67	358.24	7,192.72	-224.14	-3,643.94	1,527.30	7.44	5.79	
8,564.24	78.00	359.61	7,200.29	-191.78	-3,644.54	1,556.09	8.08	7.02	TPZ - 8564.00' MD (2177 FNL, 201 FWL)
8,578.00	78.97	0.17	7,203.03	-178.30	-3,644.57	1,567.98	8.08	7.03	
8,626.00	82.05	0.88	7,210.95	-130.96	-3,644.13	1,609.47	6.58	6.42	
8,673.00	86.88	2.02	7,215.48	-84.21	-3,642.95	1,650.10	10.56	10.28	
8,720.00	92.07	3.87	7,215.91	-37.30	-3,640.53	1,690.28	11.72	11.04	
8,814.00	91.98	4.31	7,212.59	56.41	-3,633.83	1,769.65	0.48	-0.10	
8,909.00	90.09	3.95	7,210.87	151.14	-3,626.99	1,849.86	2.03	-1.99	
9,003.00	90.35	3.78	7,210.51	244.92	-3,620.66	1,929.48	0.33	0.28	
9,098.00	89.91	3.34	7,210.30	339.74	-3,614.76	2,010.21	0.66	-0.46	
9,192.00	89.60	0.88	7,210.70	433.67	-3,611.30	2,091.31	2.64	-0.33	
9,287.00	89.60	1.58	7,211.36	528.64	-3,609.26	2,174.01	0.74	0.00	

Survey Report

Company:	Crestone Peak Resources	Local Co-ordinate Reference:	Well DAVIS 1L-9H-G266 - Slot DAVIS 1L-9H
Project:	DJ BASIN	TD Reference:	23' KB @ 4940.00usft
Site:	S4-T2N-R66W	MVD Reference:	23' KB @ 4940.00usft
Well:	DAVIS 1L-9H-G266	North Reference:	True
Wellbore:	OH	Survey Calculation Method:	Minimum Curvature
Design:	FINAL	Database:	USA EDM 5000 Multi Users DB

Survey									
Measured Depth (usft)	Inclination (°)	Azimuth (°)	Vertical Depth (usft)	+N/-S (usft)	+E/-W (usft)	Vertical Section (usft)	Dogleg Rate (°/100usf)	Build Rate (°/100u)	Formations / Comments
9,381.00	89.82	0.35	7,211.84	622.63	-3,607.68	2,256.05	1.33	0.23	
9,476.00	90.97	0.26	7,211.18	717.62	-3,607.17	2,339.49	1.21	1.21	
9,571.00	91.76	0.00	7,208.92	812.59	-3,606.95	2,423.05	0.88	0.83	
9,665.00	91.49	359.21	7,206.25	906.55	-3,607.60	2,506.12	0.89	-0.29	
9,760.00	92.33	358.59	7,203.09	1,001.48	-3,609.42	2,590.61	1.10	0.88	
9,854.00	92.55	358.94	7,199.09	1,095.37	-3,611.45	2,674.28	0.44	0.23	
9,948.00	93.16	358.07	7,194.40	1,189.22	-3,613.90	2,758.11	1.13	0.65	
10,042.00	92.64	357.80	7,189.65	1,283.04	-3,617.28	2,842.35	0.62	-0.55	
10,136.00	92.51	357.71	7,185.42	1,376.88	-3,620.96	2,926.75	0.17	-0.14	
10,231.00	91.45	359.12	7,182.14	1,471.78	-3,623.58	3,011.59	1.86	-1.12	
10,326.00	91.32	359.56	7,179.85	1,566.74	-3,624.68	3,095.76	0.48	-0.14	
10,421.00	89.78	0.26	7,178.93	1,661.74	-3,624.83	3,179.51	1.78	-1.62	
10,515.00	90.00	0.44	7,179.11	1,755.73	-3,624.25	3,262.04	0.30	0.23	
10,609.00	89.91	0.53	7,179.19	1,849.73	-3,623.46	3,344.47	0.14	-0.10	
10,704.00	89.87	0.26	7,179.37	1,944.73	-3,622.80	3,427.84	0.29	-0.04	
10,798.00	90.09	0.44	7,179.40	2,038.73	-3,622.23	3,510.37	0.30	0.23	
10,892.00	89.52	0.61	7,179.72	2,132.72	-3,621.37	3,592.76	0.63	-0.61	
10,987.00	90.09	0.79	7,180.05	2,227.71	-3,620.21	3,675.89	0.63	0.60	
11,081.00	89.69	1.05	7,180.23	2,321.70	-3,618.70	3,757.97	0.51	-0.43	
11,176.00	90.04	359.65	7,180.45	2,416.70	-3,618.12	3,841.37	1.52	0.37	
11,270.00	90.13	359.82	7,180.31	2,510.70	-3,618.55	3,924.38	0.20	0.10	
11,365.00	89.91	0.00	7,180.28	2,605.70	-3,618.70	4,008.14	0.30	-0.23	
11,459.00	90.13	0.17	7,180.25	2,699.70	-3,618.56	4,090.87	0.30	0.23	
11,553.00	89.78	0.44	7,180.32	2,793.69	-3,618.06	4,173.44	0.47	-0.37	
11,648.00	89.91	0.53	7,180.58	2,888.69	-3,617.26	4,256.74	0.17	0.14	
11,742.00	90.26	0.44	7,180.44	2,982.69	-3,616.46	4,339.16	0.38	0.37	
11,836.00	90.75	0.26	7,179.61	3,076.68	-3,615.89	4,421.69	0.56	0.52	
11,930.00	90.79	359.91	7,178.34	3,170.67	-3,615.75	4,504.42	0.37	0.04	
12,024.00	91.27	359.47	7,176.66	3,264.65	-3,616.26	4,587.45	0.69	0.51	
12,119.00	91.32	359.30	7,174.51	3,359.63	-3,617.28	4,671.59	0.19	0.05	
12,213.00	91.23	359.30	7,172.42	3,453.59	-3,618.42	4,754.91	0.10	-0.10	
12,307.00	91.98	358.94	7,169.78	3,547.55	-3,619.87	4,838.35	0.88	0.80	
12,401.00	91.32	359.56	7,167.08	3,641.50	-3,621.10	4,921.70	0.96	-0.70	
12,495.00	90.18	358.86	7,165.85	3,735.48	-3,622.39	5,005.10	1.42	-1.21	
12,590.00	88.59	357.89	7,166.87	3,830.43	-3,625.09	5,090.02	1.96	-1.67	
12,685.00	88.77	357.80	7,169.05	3,925.34	-3,628.66	5,175.31	0.21	0.19	
12,779.00	90.62	0.00	7,169.56	4,019.31	-3,630.46	5,258.94	3.06	1.97	
12,874.00	89.78	1.05	7,169.22	4,114.30	-3,629.59	5,342.21	1.42	-0.88	
12,968.00	90.57	0.88	7,168.94	4,208.29	-3,628.01	5,424.25	0.86	0.84	
13,063.00	88.15	0.53	7,170.00	4,303.27	-3,626.84	5,507.36	2.57	-2.55	
13,157.00	88.37	0.09	7,172.85	4,397.22	-3,626.33	5,589.89	0.52	0.23	
13,251.00	88.42	0.09	7,175.48	4,491.19	-3,626.18	5,672.59	0.05	0.05	
13,346.00	88.55	359.91	7,178.00	4,586.15	-3,626.18	5,756.24	0.23	0.14	
13,440.00	88.42	359.38	7,180.48	4,680.12	-3,626.77	5,839.29	0.58	-0.14	
13,535.00	89.21	0.53	7,182.45	4,775.10	-3,626.84	5,922.99	1.47	0.83	
13,629.00	89.08	0.44	7,183.85	4,869.08	-3,626.04	6,005.41	0.17	-0.14	
13,724.00	90.79	0.09	7,183.96	4,964.08	-3,625.61	6,088.88	1.84	1.80	
13,818.00	90.97	0.09	7,182.51	5,058.07	-3,625.46	6,171.60	0.19	0.19	
13,912.00	91.23	359.65	7,180.71	5,152.05	-3,625.67	6,254.49	0.54	0.28	
14,007.00	90.57	359.38	7,179.22	5,247.03	-3,626.48	6,338.54	0.75	-0.69	
14,102.00	90.44	358.77	7,178.38	5,342.02	-3,628.01	6,422.94	0.66	-0.14	
14,196.00	90.53	358.42	7,177.58	5,435.98	-3,630.31	6,506.81	0.38	0.10	
14,291.00	89.82	359.12	7,177.29	5,530.96	-3,632.35	6,591.44	1.05	-0.75	

Survey Report

Company: Crestone Peak Resources	Local Co-ordinate Reference: Well DAVIS 1L-9H-G266 - Slot DAVIS 1L-9H
Project: DJ BASIN	TVD Reference: 23' KB @ 4940.00usft
Site: S4-T2N-R66W	MD Reference: 23' KB @ 4940.00usft
Well: DAVIS 1L-9H-G266	North Reference: True
Wellbore: OH	Survey Calculation Method: Minimum Curvature
Design: FINAL	Database: USA EDM 5000 Multi Users DB

Survey									
Measured Depth (usft)	Inclination (°)	Azimuth (°)	Vertical Depth (usft)	+N/-S (usft)	+E/-W (usft)	Vertical Section (usft)	Dogleg Rate (°/100usf)	Build Rate (°/100u)	Formations / Comments
14,386.00	89.65	358.86	7,177.73	5,625.94	-3,634.03	6,675.90	0.33	-0.18	
14,479.00	89.82	0.17	7,178.16	5,718.94	-3,634.81	6,758.19	1.42	0.18	
14,574.00	90.44	359.74	7,177.95	5,813.94	-3,634.89	6,841.91	0.79	0.65	
14,668.00	90.66	0.88	7,177.04	5,907.93	-3,634.38	6,924.46	1.24	0.23	
14,763.00	90.57	359.03	7,176.02	6,002.92	-3,634.46	7,008.18	1.95	-0.09	
14,857.00	92.29	0.53	7,173.68	6,096.88	-3,634.82	7,091.12	2.43	1.83	
14,952.00	91.36	1.93	7,170.65	6,191.81	-3,632.78	7,173.77	1.77	-0.98	
15,047.00	91.80	1.58	7,168.03	6,286.73	-3,629.87	7,256.01	0.59	0.46	
15,141.00	90.53	2.28	7,166.12	6,380.65	-3,626.70	7,337.25	1.54	-1.35	
15,235.00	89.03	1.58	7,166.48	6,474.60	-3,623.54	7,418.50	1.76	-1.60	
15,330.00	88.64	1.41	7,168.42	6,569.54	-3,621.06	7,500.97	0.45	-0.41	
15,424.00	88.37	1.05	7,170.87	6,663.49	-3,619.04	7,582.77	0.48	-0.29	
15,446.00	88.68	0.79	7,171.43	6,685.48	-3,618.69	7,601.98	1.84	1.41	LAST SURVEY - 15446.00' MD
15,506.00	88.68	0.79	7,172.82	6,745.46	-3,617.86	7,654.42	0.00	0.00	PTB - 15506.00' MD (467 FNL, 211 FWL)

Targets									
Target Name	Dip Angle (°)	Dip Dir. (°)	TVD (usft)	+N/-S (usft)	+E/-W (usft)	Northing (usft)	Easting (usft)	Latitude	Longitude
DAVIS 1L 2188' TGT - hit/miss target - Shape	0.00	0.00	7,177.00	2,188.00	-3,622.11	1,302,068.59	3,198,190.94	40.160398	-104.790888
- actual wellpath misses target center by 3.33usft at 10947.26usft MD (7180.03 TVD, 2187.97 N, -3620.73 E)									
- Point									
DAVIS 1L-9H-G266 TPZ - actual wellpath misses target center by 32.91usft at 8568.33usft MD (7201.13 TVD, -187.78 N, -3644.56 E)	0.00	0.00	7,221.00	-191.78	-3,618.64	1,299,688.92	3,198,213.78	40.153865	-104.790874
- Point									
DAVIS 1L-9H-G266 BHL - actual wellpath misses target center by 13.59usft at 15506.00usft MD (7172.82 TVD, 6745.46 N, -3617.86 E)	0.00	0.00	7,177.00	6,752.43	-3,628.75	1,306,632.82	3,198,147.12	40.172928	-104.790914
- Point									

Design Annotations				
Measured Depth (usft)	Vertical Depth (usft)	Local Coordinates		Comment
		+N/-S (usft)	+E/-W (usft)	
8,564.24	7,200.29	-191.78	-3,644.54	TPZ - 8564.00' MD (2177 FNL, 201 FWL)
15,446.00	7,171.43	6,685.48	-3,618.69	LAST SURVEY - 15446.00' MD
15,506.00	7,172.82	6,745.46	-3,617.86	PTB - 15506.00' MD (467 FNL, 211 FWL)

Checked By: _____ Approved By: _____ Date: _____