



CRESTONE PEAK  
RESOURCES

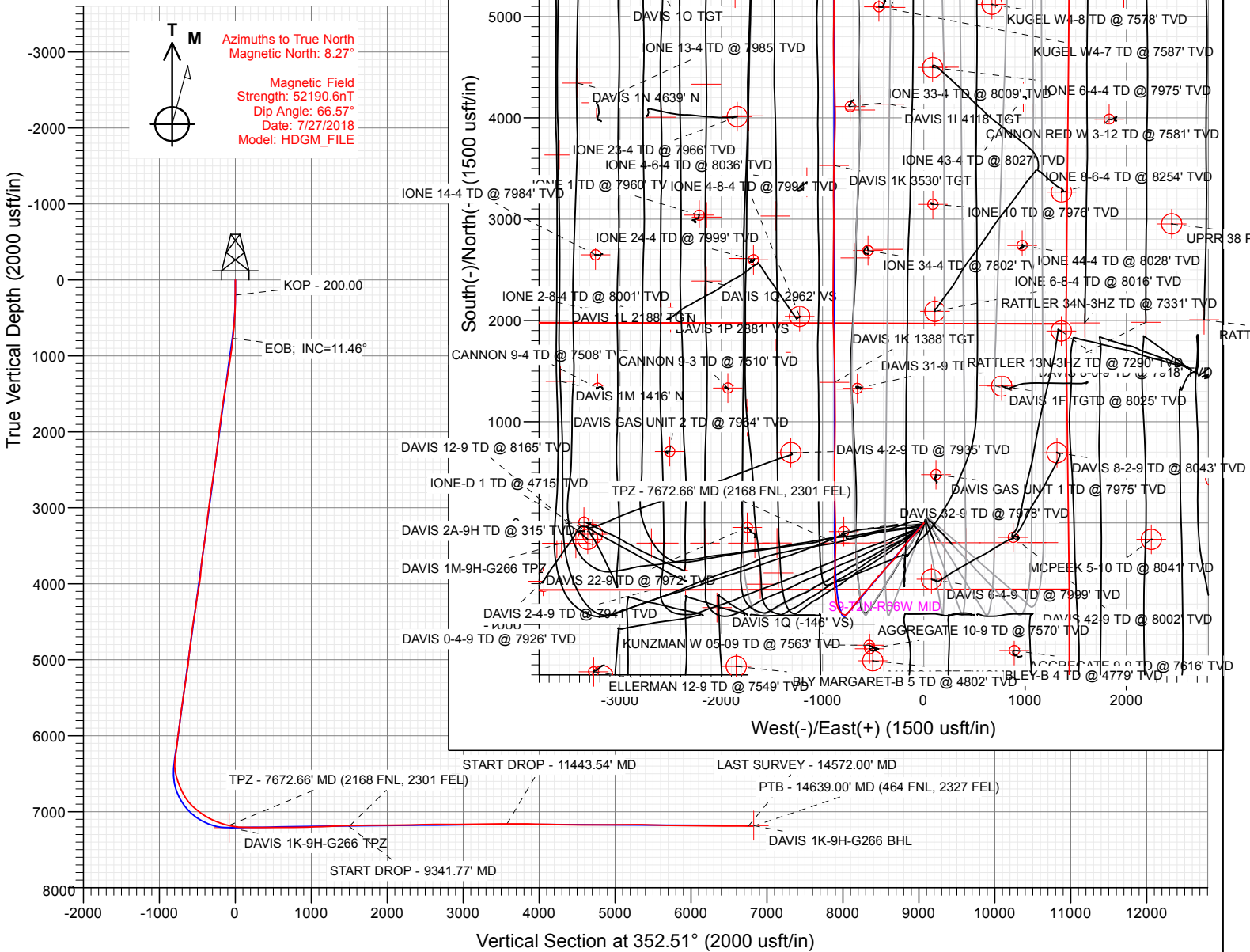
SECTION DETAILS

Sec	MD	Inc	Azi	TVD	+N/-S	+E/-W	Dleg	TFace	Vsect	Target
1	0.00	0.00	0.00	0.00	0.00	0.00	0.00	0.00	0.00	
2	200.00	0.00	0.00	200.00	0.00	0.00	0.00	0.00	0.00	
3	773.19	11.46	220.14	769.37	-43.69	-36.84	2.00	220.14	-38.52	
4	6511.66	11.46	220.14	6393.37	-915.56	-772.10	0.00	0.00	-807.15	
5	7756.55	90.87	359.93	7211.00	-197.04	-881.64	8.00	139.11	-80.48	DAVIS 1K-9H-G266 TPZ
6	9341.77	90.87	359.93	7187.00	1388.00	-883.45	0.00	0.00	1491.28	DAVIS 1K 1388' TGT
7	9358.08	90.54	359.93	7186.80	1404.31	-883.47	2.00	-180.00	1507.45	
8	11443.54	90.54	359.93	7167.10	3489.67	-885.85	0.00	0.00	3575.35	
9	11483.86	89.73	359.93	7167.00	3530.00	-885.89	2.00	180.00	3615.34	DAVIS 1K 3530' TGT
10	14723.09	89.73	359.93	7182.00	6769.19	-889.59	0.00	0.00	6827.39	DAVIS 1K-9H-G266 BHL

FINAL  
DAVIS 1K-9H-G266  
37723' 185120 391037 185227  
23 KB @ 4940.00usft  
Ground Level @ 4917.00  
North American Datum 1983  
Well DAVIS 1K-9H-G266 - Slot DAVIS 1K-9H, True North

Type	Target	No Target (Freehand)	Azimuth	Origin Type	N/S	E/W	From TVD
Name	TVD	+N/-S	+E/-W	Latitude	Longitude		
DAVIS 1K 3530' TGT	7167.00	3530.00	-885.89	40.164106	-104.781080		
DAVIS 1K-9H-G266 BHL	7182.00	6769.19	-889.59	40.172998	-104.781094		
DAVIS 1K 1388' TGT	7187.00	1388.00	-883.45	40.158226	-104.781071		
DAVIS 1K-9H-G266 TPZ	7211.00	-197.04	-881.64	40.153875	-104.781065		

Project: DJ BASIN  
Site: S4-T2N-R66W  
Well: DAVIS 1K-9H-G266  
Wellbore: OH  
Design: FINAL



WELL DETAILS: DAVIS 1K-9H-G266

+N/-S	+E/-W	Northing	Easting	Latitude	Longitude	
0.00	0.00	1299918.88	3201835.63	40.154416	-104.777911	DAVIS 1K-9H

CATHEDRAL





CRESTONE PEAK  
RESOURCES

# SECTION DETAILS

Sec	MD	Inc	Azi	TVD	+N/-S	+E/-W	Dleg	TFace	Vsect	Target
1	0.00	0.00	0.00	0.00	0.00	0.00	0.00	0.00	0.00	
2	200.00	0.00	0.00	200.00	0.00	0.00	0.00	0.00	0.00	
3	773.19	11.46	220.14	769.37	-43.69	-36.84	2.00	220.14	-38.52	
4	6511.66	11.46	220.14	6393.37	-915.56	-772.10	0.00	0.00	-807.15	
5	7756.55	90.87	359.93	7211.00	-197.04	-881.64	8.00	139.11	-80.48	DAVIS 1K-9H-G266 TPZ
6	9341.77	90.87	359.93	7187.00	1388.00	-883.45	0.00	0.00	1491.28	DAVIS 1K 1388' TGT
7	9358.08	90.54	359.93	7186.80	1404.31	-883.47	2.00	-180.00	1507.45	
8	11443.54	90.54	359.93	7167.10	3489.67	-885.85	0.00	0.00	3575.35	
9	11483.86	89.73	359.93	7167.00	3530.00	-885.89	2.00	180.00	3615.34	DAVIS 1K 3530' TGT
10	14723.09	89.73	359.93	7182.00	6769.19	-889.59	0.00	0.00	6827.39	DAVIS 1K-9H-G266 BHL

FINAL  
DAVIS 1K-9H-G266  
377237 185120 381037 185227  
23 KB @ 4940.00usft  
Ground Level @ 4917.00  
North American Datum 1983  
Well DAVIS 1K-9H-G266 - Slot DAVIS 1K-9H, True North

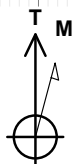
Type	Target	No Target (Freehand)	Azimuth	Origin	Type	N/S	E/W	From	TVD
Name									
DAVIS 1K 3530' TGT			7167.00	3530.00	+N/-S	+E/-W	Latitude	Longitude	
DAVIS 1K-9H-G266 BHL			7182.00	6769.19	-885.89	-885.89	40.164106	-104.781080	
DAVIS 1K 1388' TGT			7187.00	1388.00	-883.45	-883.45	40.172998	-104.781094	
DAVIS 1K-9H-G266 TPZ			7211.00	-197.04	-881.64	-881.64	40.153875	-104.781065	

Project: DJ BASIN  
Site: S4-T2N-R66W  
Well: DAVIS 1K-9H-G266  
Wellbore: OH  
Design: FINAL

True Vertical Depth (200 usft/in)

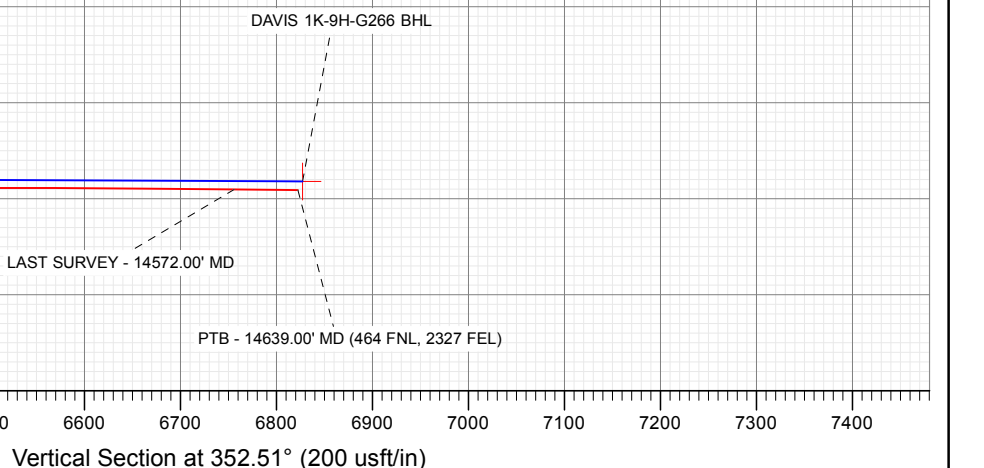
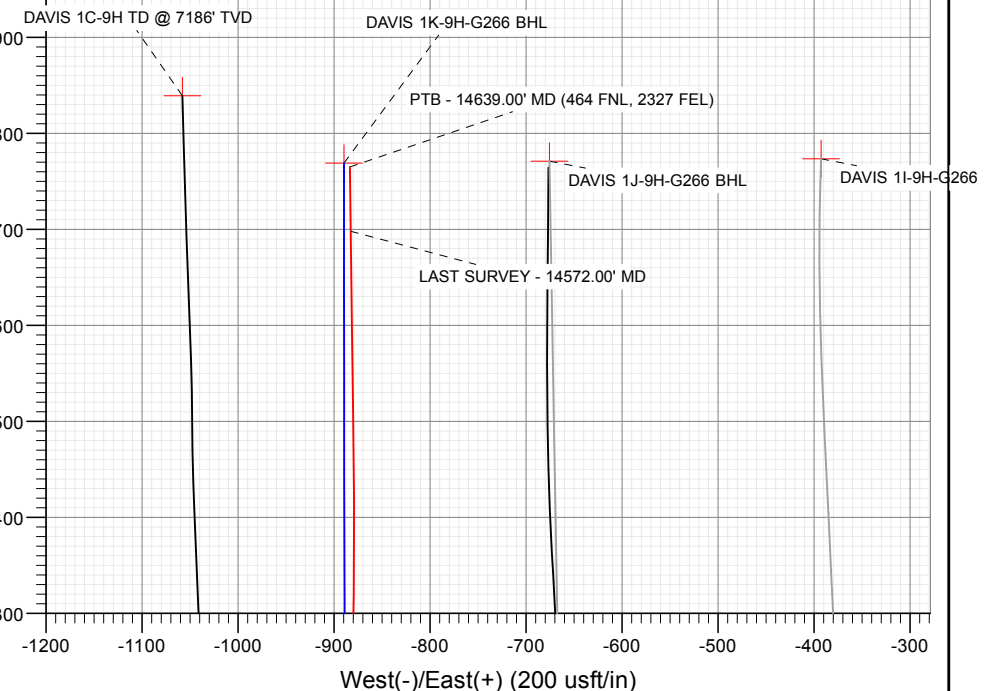
South(-)/North(+) (200 usft/in)

West(-)/East(+) (200 usft/in)



Azimuths to True North  
Magnetic North: 8.27°

Magnetic Field  
Strength: 52190.6nT  
Dip Angle: 66.57°  
Date: 7/27/2018  
Model: HDGM\_FILE



## WELL DETAILS: DAVIS 1K-9H-G266

4917.00  
+N/-S 0.00 +E/-W 0.00 Northing 1299918.88 Easting 3201835.63 Latitude 40.154416 Longitude -104.777911 DAVIS 1K-9H

CATHEDRAL



## Survey Report

<b>Company:</b>	Crestone Peak Resources	<b>Local Co-ordinate Reference:</b>	Well DAVIS 1K-9H-G266 - Slot DAVIS 1K-9H
<b>Project:</b>	DJ BASIN	<b>TVD Reference:</b>	23' KB @ 4940.00usft
<b>Site:</b>	S4-T2N-R66W	<b>MD Reference:</b>	23' KB @ 4940.00usft
<b>Well:</b>	DAVIS 1K-9H-G266	<b>North Reference:</b>	True
<b>Wellbore:</b>	OH	<b>Survey Calculation Method:</b>	Minimum Curvature
<b>Design:</b>	FINAL	<b>Database:</b>	USA EDM 5000 Multi Users DB

<b>Project</b>	DJ BASIN		
<b>Map System:</b>	US State Plane 1983	<b>System Datum:</b>	Mean Sea Level
<b>Geo Datum:</b>	North American Datum 1983		
<b>Map Zone:</b>	Colorado Northern Zone		

Site		S4-T2N-R66W			
Site Position:		Northing:	1,300,048.95 usft	Latitude:	40.154783
From:	Map	Easting:	3,201,389.75 usft	Longitude:	-104.779502
Position Uncertainty:	0.00 usft	Slot Radius:	13-3/16 "	Grid Convergence:	0.47 °

Well	DAVIS 1K-9H-G266 - Slot DAVIS 1K-9H					
Well Position	+N/-S	0.00 usft	Northing:	1,299,918.88 usft	Latitude:	40.154416
	+E/-W	0.00 usft	Easting:	3,201,835.63 usft	Longitude:	-104.777911
Position Uncertainty		0.00 usft	Wellhead Elevation:	usft	Ground Level:	4,917.00 usft

<b>Wellbore</b>	OH				
<b>Magnetics</b>	<b>Model Name</b>	<b>Sample Date</b>	<b>Declination (°)</b>	<b>Dip Angle (°)</b>	<b>Field Strength (nT)</b>
	HDGM_FILE	7/27/2018	8.27	66.57	52,190.60000000

<b>Design</b>	FINAL				
<b>Audit Notes:</b>					
<b>Version:</b>	1.0	<b>Phase:</b>	ACTUAL	<b>Tie On Depth:</b>	0.00
<b>Vertical Section:</b>	<b>Depth From (TVD) (usft)</b>	<b>+N/-S (usft)</b>	<b>+E/-W (usft)</b>	<b>Direction (°)</b>	
	0.00	0.00	0.00	352.51	

<b>Survey Program</b>	<b>Date</b>	8/7/2018			
<b>From (usft)</b>	<b>To (usft)</b>	<b>Survey (Wellbore)</b>	<b>Tool Name</b>	<b>Description</b>	
102.00	2,093.00	Survey #1 (OH)	VESSI_GYROFLEX	VESSI Gyroflex Gyro	
2,273.00	14,639.00	Survey #2 (OH)	MWD+HDGM	OWSG MWD + HDGM	

<b>Survey</b>										
<b>Measured Depth (usft)</b>	<b>Inclination (°)</b>	<b>Azimuth (°)</b>	<b>Vertical Depth (usft)</b>	<b>+N/-S (usft)</b>	<b>+E/-W (usft)</b>	<b>Vertical Section (usft)</b>	<b>Dogleg Rate (°/100usf)</b>	<b>Build Rate (°/100u)</b>	<b>Formations / Comments</b>	
0.00	0.00	0.00	0.00	0.00	0.00	0.00	0.00	0.00		
102.00	0.32	12.22	102.00	0.28	0.06	0.27	0.31	0.31		
136.00	0.08	269.69	136.00	0.37	0.06	0.36	1.02	-0.71		
168.00	0.54	197.15	168.00	0.23	-0.01	0.23	1.63	1.44		
199.00	0.91	206.03	199.00	-0.13	-0.16	-0.11	1.24	1.19		
231.00	0.89	204.71	230.99	-0.59	-0.38	-0.53	0.09	-0.06		
262.00	1.10	208.05	261.99	-1.07	-0.62	-0.98	0.70	0.68		
292.00	1.24	210.51	291.98	-1.60	-0.92	-1.47	0.50	0.47		
325.00	1.45	209.19	324.97	-2.28	-1.30	-2.09	0.64	0.64		
356.00	2.10	217.11	355.96	-3.07	-1.84	-2.81	2.24	2.10		
388.00	2.28	215.17	387.93	-4.06	-2.56	-3.69	0.61	0.56		
419.00	2.71	217.64	418.90	-5.14	-3.36	-4.66	1.43	1.39		

## Survey Report

<b>Company:</b>	Crestone Peak Resources	<b>Local Co-ordinate Reference:</b>	Well DAVIS 1K-9H-G266 - Slot DAVIS 1K-9H
<b>Project:</b>	DJ BASIN	<b>TVD Reference:</b>	23' KB @ 4940.00usft
<b>Site:</b>	S4-T2N-R66W	<b>MD Reference:</b>	23' KB @ 4940.00usft
<b>Well:</b>	DAVIS 1K-9H-G266	<b>North Reference:</b>	True
<b>Wellbore:</b>	OH	<b>Survey Calculation Method:</b>	Minimum Curvature
<b>Design:</b>	FINAL	<b>Database:</b>	USA EDM 5000 Multi Users DB

Survey									
Measured Depth (usft)	Inclination (°)	Azimuth (°)	Vertical Depth (usft)	+N/-S (usft)	+E/-W (usft)	Vertical Section (usft)	Dogleg Rate (°/100usf)	Build Rate (°/100u)	Formations / Comments
451.00	3.22	221.50	450.86	-6.42	-4.42	-5.78	1.71	1.59	
483.00	3.87	221.77	482.80	-7.89	-5.73	-7.08	2.03	2.03	
514.00	4.11	223.26	513.72	-9.48	-7.19	-8.46	0.84	0.77	
546.00	4.84	222.47	545.63	-11.31	-8.89	-10.06	2.29	2.28	
577.00	5.35	221.07	576.50	-13.37	-10.72	-11.86	1.69	1.65	
609.00	5.99	221.59	608.35	-15.74	-12.81	-13.94	2.01	2.00	
703.00	8.06	217.02	701.64	-24.67	-20.03	-21.85	2.28	2.20	
797.00	10.45	219.75	794.41	-36.49	-29.45	-32.34	2.58	2.54	
892.00	12.28	219.92	887.54	-50.86	-41.45	-45.03	1.93	1.93	
960.00	11.69	219.90	954.06	-61.69	-50.51	-54.58	0.87	-0.87	
1,054.00	13.26	222.98	1,045.84	-76.89	-63.96	-67.89	1.81	1.67	
1,149.00	13.26	220.54	1,138.31	-93.14	-78.47	-82.11	0.59	0.00	
1,243.00	12.31	216.30	1,229.98	-109.41	-91.41	-96.56	1.42	-1.01	
1,338.00	13.69	220.20	1,322.54	-126.16	-104.67	-111.44	1.72	1.45	
1,432.00	14.72	223.45	1,413.67	-143.32	-120.06	-126.45	1.39	1.10	
1,527.00	14.70	221.89	1,505.55	-161.06	-136.41	-141.90	0.42	-0.02	
1,621.00	14.55	221.61	1,596.51	-178.77	-152.21	-157.40	0.18	-0.16	
1,716.00	12.41	222.03	1,688.89	-195.27	-166.97	-171.84	2.25	-2.25	
1,810.00	10.79	221.08	1,780.96	-209.41	-179.52	-184.22	1.74	-1.72	
1,905.00	9.98	219.50	1,874.41	-222.46	-190.60	-195.72	0.90	-0.85	
1,999.00	10.54	219.75	1,966.90	-235.36	-201.28	-207.11	0.60	0.60	
2,093.00	10.00	218.53	2,059.40	-248.35	-211.86	-218.62	0.62	-0.57	
2,273.00	8.66	210.23	2,237.02	-272.29	-228.42	-240.19	1.05	-0.74	
2,368.00	10.94	219.20	2,330.63	-285.46	-237.72	-252.04	2.88	2.40	
2,463.00	12.26	222.27	2,423.69	-299.91	-250.20	-264.74	1.53	1.39	
2,557.00	10.81	215.77	2,515.79	-314.45	-262.07	-277.60	2.07	-1.54	
2,652.00	11.43	209.71	2,609.01	-329.85	-271.94	-291.59	1.39	0.65	
2,746.00	12.70	217.26	2,700.94	-346.17	-282.81	-306.35	2.15	1.35	
2,840.00	13.05	224.91	2,792.58	-361.91	-296.56	-320.16	1.85	0.37	
2,935.00	12.57	223.50	2,885.22	-377.00	-311.25	-333.21	0.60	-0.51	
3,030.00	11.82	223.59	2,978.07	-391.55	-325.08	-345.83	0.79	-0.79	
3,124.00	10.94	223.24	3,070.23	-405.02	-337.82	-357.53	0.94	-0.94	
3,219.00	9.49	227.46	3,163.72	-416.88	-349.77	-367.73	1.72	-1.53	
3,313.00	11.91	221.13	3,256.08	-429.43	-361.86	-378.60	2.86	2.57	
3,408.00	10.06	219.73	3,349.34	-443.20	-373.62	-390.71	1.97	-1.95	
3,503.00	11.56	217.35	3,442.65	-457.15	-384.69	-403.10	1.65	1.58	
3,597.00	12.13	219.29	3,534.65	-472.28	-396.66	-416.54	0.74	0.61	
3,691.00	12.96	220.34	3,626.40	-487.95	-409.74	-430.38	0.92	0.88	
3,786.00	10.06	222.10	3,719.48	-502.23	-422.20	-442.91	3.07	-3.05	
3,881.00	7.56	233.61	3,813.36	-512.10	-432.80	-451.31	3.21	-2.63	
3,975.00	10.81	229.83	3,906.14	-521.46	-444.51	-459.06	3.51	3.46	
4,070.00	12.52	213.05	3,999.20	-535.84	-456.94	-471.70	3.98	1.80	
4,164.00	13.71	214.36	4,090.75	-553.58	-468.79	-487.75	1.30	1.27	
4,259.00	14.68	226.67	4,182.87	-571.13	-483.90	-503.18	3.33	1.02	
4,375.00	11.82	226.84	4,295.77	-589.35	-503.26	-518.72	2.47	-2.47	
4,469.00	12.88	213.31	4,387.61	-604.70	-516.04	-532.27	3.27	1.13	
4,564.00	13.27	217.35	4,480.15	-622.21	-528.47	-548.02	1.05	0.41	
4,659.00	10.64	214.45	4,573.08	-638.12	-540.05	-562.27	2.84	-2.77	
4,753.00	11.87	227.90	4,665.29	-651.76	-552.13	-574.22	3.07	1.31	
4,848.00	11.34	224.21	4,758.35	-665.00	-565.90	-585.56	0.96	-0.56	
4,942.00	11.21	221.83	4,850.54	-678.43	-578.43	-597.24	0.51	-0.14	
5,037.00	9.40	222.19	4,944.00	-691.06	-589.80	-608.28	1.91	-1.91	
5,132.00	9.67	224.74	5,037.69	-702.48	-600.63	-618.19	0.53	0.28	

# Survey Report

<b>Company:</b>	Crestone Peak Resources	<b>Local Co-ordinate Reference:</b>	Well DAVIS 1K-9H-G266 - Slot DAVIS 1K-9H
<b>Project:</b>	DJ BASIN	<b>TVD Reference:</b>	23' KB @ 4940.00usft
<b>Site:</b>	S4-T2N-R66W	<b>MD Reference:</b>	23' KB @ 4940.00usft
<b>Well:</b>	DAVIS 1K-9H-G266	<b>North Reference:</b>	True
<b>Wellbore:</b>	OH	<b>Survey Calculation Method:</b>	Minimum Curvature
<b>Design:</b>	FINAL	<b>Database:</b>	USA EDM 5000 Multi Users DB

Survey									
Measured Depth (usft)	Inclination (°)	Azimuth (°)	Vertical Depth (usft)	+N/-S (usft)	+E/-W (usft)	Vertical Section (usft)	Dogleg Rate (°/100usf)	Build Rate (°/100u)	Formations / Comments
5,226.00	11.95	220.52	5,130.02	-715.49	-612.51	-629.54	2.57	2.43	
5,321.00	12.61	215.16	5,222.84	-731.44	-624.87	-643.75	1.39	0.69	
5,415.00	12.00	214.54	5,314.68	-747.88	-636.32	-658.55	0.66	-0.65	
5,510.00	11.60	219.11	5,407.68	-763.43	-647.95	-672.45	1.07	-0.42	
5,604.00	12.26	216.47	5,499.65	-778.79	-659.84	-686.13	0.91	0.70	
5,698.00	11.73	222.71	5,591.60	-793.83	-672.26	-699.43	1.49	-0.56	
5,792.00	11.65	219.73	5,683.65	-808.15	-684.80	-711.99	0.65	-0.09	
5,886.00	9.36	212.78	5,776.07	-821.88	-695.01	-724.27	2.78	-2.44	
5,980.00	10.50	222.80	5,868.67	-834.59	-704.97	-735.58	2.20	1.21	
6,075.00	12.44	219.37	5,961.77	-848.86	-717.34	-748.11	2.16	2.04	
6,170.00	9.58	223.33	6,055.01	-862.52	-729.26	-760.10	3.11	-3.01	
6,264.00	9.67	214.54	6,147.69	-874.71	-739.10	-770.91	1.56	0.10	
6,359.00	12.48	224.65	6,240.92	-888.59	-750.85	-783.14	3.58	2.96	
6,453.00	10.20	223.59	6,333.08	-901.85	-763.72	-794.60	2.44	-2.43	
6,500.00	11.51	254.44	6,379.28	-906.12	-771.12	-797.88	12.51	2.79	
6,547.00	15.43	280.72	6,425.02	-906.22	-781.79	-796.58	15.26	8.34	
6,594.00	17.93	297.42	6,470.07	-901.72	-794.37	-790.48	11.45	5.32	
6,641.00	18.63	306.74	6,514.70	-893.90	-806.81	-781.10	6.39	1.49	
6,688.00	19.73	312.98	6,559.10	-884.00	-818.63	-769.74	4.95	2.34	
6,736.00	22.19	323.70	6,603.93	-871.16	-829.93	-755.54	9.47	5.12	
6,783.00	23.86	333.37	6,647.20	-855.50	-839.45	-738.78	8.78	3.55	
6,831.00	24.35	338.47	6,691.02	-837.62	-847.43	-720.01	4.46	1.02	
6,878.00	26.59	341.63	6,733.46	-818.62	-854.30	-700.27	5.57	4.77	
6,925.00	29.36	346.99	6,774.97	-797.40	-860.21	-678.47	7.95	5.89	
6,972.00	32.92	352.26	6,815.19	-773.51	-864.53	-654.22	9.53	7.57	
7,020.00	37.49	353.93	6,854.41	-746.05	-867.83	-626.55	9.73	9.52	
7,067.00	41.53	352.53	6,890.66	-716.36	-871.37	-596.66	8.80	8.60	
7,114.00	46.06	352.70	6,924.58	-684.11	-875.55	-564.14	9.64	9.64	
7,161.00	49.26	354.11	6,956.23	-649.61	-879.53	-529.41	7.16	6.81	
7,208.00	51.99	356.31	6,986.05	-613.41	-882.55	-493.13	6.84	5.81	
7,255.00	53.75	359.56	7,014.42	-575.97	-883.89	-455.84	6.66	3.74	
7,303.00	55.72	1.84	7,042.13	-536.79	-883.40	-417.05	5.65	4.10	
7,350.00	59.77	2.46	7,067.21	-497.08	-881.90	-377.88	8.69	8.62	
7,397.00	62.89	2.81	7,089.76	-455.89	-880.00	-337.29	6.67	6.64	
7,444.00	65.57	2.99	7,110.19	-413.62	-877.86	-295.66	5.71	5.70	
7,491.00	68.42	2.64	7,128.56	-370.42	-875.74	-253.10	6.10	6.06	
7,538.00	70.71	1.76	7,144.97	-326.41	-874.05	-209.69	5.18	4.87	
7,585.00	72.91	1.67	7,159.64	-281.78	-872.72	-165.62	4.68	4.68	
7,632.00	75.72	1.14	7,172.34	-236.55	-871.61	-120.91	6.08	5.98	
7,672.66	77.09	1.44	7,181.90	-197.04	-870.72	-81.86	3.44	3.36	TPZ - 7672.66' MD (2168 FNL, 2301 FEL)
7,679.00	77.30	1.49	7,183.31	-190.86	-870.56	-75.75	3.44	3.36	
7,726.00	79.72	0.00	7,192.67	-144.81	-869.96	-30.17	6.01	5.15	
7,774.00	83.06	358.42	7,199.85	-97.36	-870.62	16.96	7.68	6.96	
7,821.00	86.53	358.24	7,204.12	-50.58	-871.98	63.51	7.39	7.38	
7,868.00	88.99	358.15	7,205.95	-3.65	-873.46	110.24	5.24	5.23	
7,962.00	88.37	358.15	7,208.12	90.28	-876.50	203.76	0.66	-0.66	
8,057.00	90.66	359.47	7,208.92	185.25	-878.47	298.18	2.78	2.41	
8,151.00	90.48	358.77	7,207.99	279.23	-879.91	391.55	0.77	-0.19	
8,245.00	89.56	358.50	7,207.95	373.20	-882.15	485.01	1.02	-0.98	
8,340.00	89.47	359.56	7,208.76	468.18	-883.76	579.39	1.12	-0.09	
8,435.00	90.88	0.88	7,208.47	563.18	-883.39	673.53	2.03	1.48	
8,530.00	91.45	1.67	7,206.54	658.13	-881.28	767.40	1.03	0.60	
8,624.00	91.10	0.88	7,204.44	752.09	-879.19	860.27	0.92	-0.37	

## Survey Report

<b>Company:</b>	Crestone Peak Resources	<b>Local Co-ordinate Reference:</b>	Well DAVIS 1K-9H-G266 - Slot DAVIS 1K-9H
<b>Project:</b>	DJ BASIN	<b>TVD Reference:</b>	23' KB @ 4940.00usft
<b>Site:</b>	S4-T2N-R66W	<b>MD Reference:</b>	23' KB @ 4940.00usft
<b>Well:</b>	DAVIS 1K-9H-G266	<b>North Reference:</b>	True
<b>Wellbore:</b>	OH	<b>Survey Calculation Method:</b>	Minimum Curvature
<b>Design:</b>	FINAL	<b>Database:</b>	USA EDM 5000 Multi Users DB

Survey									
Measured Depth (usft)	Inclination (°)	Azimuth (°)	Vertical Depth (usft)	+N/-S (usft)	+E/-W (usft)	Vertical Section (usft)	Dogleg Rate (°/100usf)	Build Rate (°/100u)	Formations / Comments
8,718.00	91.67	0.97	7,202.17	846.05	-877.67	953.23	0.61	0.61	
8,812.00	91.80	0.44	7,199.33	940.00	-876.52	1,046.23	0.58	0.14	
8,907.00	92.02	0.00	7,196.16	1,034.94	-876.15	1,140.32	0.52	0.23	
9,001.00	92.20	359.74	7,192.70	1,128.88	-876.37	1,233.48	0.34	0.19	
9,096.00	92.51	359.56	7,188.80	1,223.80	-876.95	1,327.67	0.38	0.33	
9,191.00	92.90	359.12	7,184.31	1,318.68	-878.04	1,421.89	0.62	0.41	
9,285.00	91.01	359.65	7,181.11	1,412.62	-879.05	1,515.15	2.09	-2.01	
9,380.00	89.34	358.77	7,180.82	1,507.60	-880.36	1,609.50	1.99	-1.76	
9,474.00	91.01	359.21	7,180.53	1,601.59	-882.01	1,702.89	1.84	1.78	
9,569.00	90.00	358.24	7,179.69	1,696.56	-884.13	1,797.33	1.47	-1.06	
9,663.00	90.44	357.89	7,179.33	1,790.50	-887.30	1,890.89	0.60	0.47	
9,757.00	90.57	357.36	7,178.50	1,884.42	-891.20	1,984.51	0.58	0.14	
9,852.00	91.06	358.33	7,177.15	1,979.34	-894.77	2,079.09	1.14	0.52	
9,946.00	90.79	359.65	7,175.63	2,073.31	-896.42	2,172.47	1.43	-0.29	
10,040.00	90.13	0.53	7,174.88	2,167.30	-896.28	2,265.65	1.17	-0.70	
10,135.00	91.23	0.26	7,173.75	2,262.29	-895.62	2,359.74	1.19	1.16	
10,230.00	91.85	359.91	7,171.20	2,357.26	-895.48	2,453.88	0.75	0.65	
10,324.00	91.49	0.88	7,168.46	2,451.22	-894.83	2,546.95	1.10	-0.38	
10,419.00	90.22	1.05	7,167.04	2,546.19	-893.23	2,640.90	1.35	-1.34	
10,513.00	90.18	0.88	7,166.71	2,640.18	-891.65	2,733.88	0.19	-0.04	
10,607.00	89.96	0.61	7,166.60	2,734.17	-890.43	2,826.91	0.37	-0.23	
10,702.00	90.22	0.44	7,166.45	2,829.16	-889.56	2,920.98	0.33	0.27	
10,796.00	90.26	0.09	7,166.05	2,923.16	-889.12	3,014.12	0.37	0.04	
10,891.00	90.40	359.65	7,165.51	3,018.16	-889.34	3,108.34	0.49	0.15	
10,985.00	90.44	359.38	7,164.82	3,112.15	-890.13	3,201.63	0.29	0.04	
11,080.00	91.67	359.21	7,163.07	3,207.13	-891.30	3,295.95	1.31	1.29	
11,174.00	90.79	359.91	7,161.05	3,301.10	-892.02	3,389.21	1.20	-0.94	
11,269.00	90.13	1.76	7,160.29	3,396.08	-890.64	3,483.21	2.07	-0.69	
11,363.00	90.00	1.67	7,160.18	3,490.04	-887.83	3,576.00	0.17	-0.14	
11,458.00	89.96	1.49	7,160.22	3,585.01	-885.21	3,669.81	0.19	-0.04	
11,552.00	89.78	1.84	7,160.43	3,678.97	-882.48	3,762.61	0.42	-0.19	
11,646.00	88.95	1.23	7,161.47	3,772.93	-879.96	3,855.44	1.10	-0.88	
11,740.00	88.86	1.41	7,163.27	3,866.88	-877.79	3,948.31	0.21	-0.10	
11,834.00	88.68	1.05	7,165.28	3,960.84	-875.78	4,041.20	0.43	-0.19	
11,928.00	88.64	358.94	7,167.48	4,054.81	-875.78	4,134.37	2.24	-0.04	
12,022.00	89.12	359.30	7,169.32	4,148.78	-877.23	4,227.73	0.64	0.51	
12,117.00	88.81	358.59	7,171.04	4,243.75	-878.98	4,322.12	0.82	-0.33	
12,211.00	89.30	358.24	7,172.59	4,337.70	-881.58	4,415.60	0.64	0.52	
12,305.00	89.56	357.27	7,173.52	4,431.62	-885.26	4,509.20	1.07	0.28	
12,399.00	90.13	357.71	7,173.78	4,525.53	-889.37	4,602.85	0.77	0.61	
12,494.00	90.44	359.03	7,173.30	4,620.49	-892.08	4,697.35	1.43	0.33	
12,588.00	90.13	1.23	7,172.84	4,714.48	-891.86	4,790.51	2.36	-0.33	
12,683.00	90.09	0.97	7,172.65	4,809.46	-890.04	4,884.45	0.28	-0.04	
12,777.00	90.22	0.44	7,172.40	4,903.45	-888.88	4,977.48	0.58	0.14	
12,872.00	90.35	0.17	7,171.93	4,998.45	-888.38	5,071.61	0.32	0.14	
12,967.00	90.13	359.82	7,171.53	5,093.45	-888.39	5,165.79	0.44	-0.23	
13,061.00	90.00	0.09	7,171.42	5,187.45	-888.46	5,259.00	0.32	-0.14	
13,155.00	89.47	0.17	7,171.86	5,281.45	-888.25	5,352.17	0.57	-0.56	
13,250.00	88.77	0.00	7,173.32	5,376.44	-888.11	5,446.33	0.76	-0.74	
13,344.00	88.51	0.09	7,175.55	5,470.41	-888.03	5,539.49	0.29	-0.28	
13,438.00	88.55	359.82	7,177.96	5,564.38	-888.11	5,632.67	0.29	0.04	
13,533.00	88.11	359.74	7,180.73	5,659.34	-888.47	5,726.86	0.47	-0.46	
13,627.00	88.99	1.93	7,183.11	5,753.29	-887.10	5,819.84	2.51	0.94	



## Survey Report

<b>Company:</b>	Crestone Peak Resources	<b>Local Co-ordinate Reference:</b>	Well DAVIS 1K-9H-G266 - Slot DAVIS 1K-9H
<b>Project:</b>	DJ BASIN	<b>TVD Reference:</b>	23' KB @ 4940.00usft
<b>Site:</b>	S4-T2N-R66W	<b>MD Reference:</b>	23' KB @ 4940.00usft
<b>Well:</b>	DAVIS 1K-9H-G266	<b>North Reference:</b>	True
<b>Wellbore:</b>	OH	<b>Survey Calculation Method:</b>	Minimum Curvature
<b>Design:</b>	FINAL	<b>Database:</b>	USA EDM 5000 Multi Users DB

Survey									
Measured Depth (usft)	Inclination (°)	Azimuth (°)	Vertical Depth (usft)	+N/-S (usft)	+E/-W (usft)	Vertical Section (usft)	Dogleg Rate (°/100usf)	Build Rate (°/100u)	Formations / Comments
13,722.00	90.18	0.88	7,183.79	5,848.26	-884.77	5,913.69	1.67	1.25	
13,816.00	89.69	0.97	7,183.90	5,942.24	-883.25	6,006.68	0.53	-0.52	
13,910.00	89.52	0.61	7,184.55	6,036.23	-881.96	6,099.70	0.42	-0.18	
14,005.00	89.43	0.53	7,185.42	6,131.22	-881.01	6,193.75	0.13	-0.09	
14,100.00	89.17	0.44	7,186.58	6,226.21	-880.21	6,287.83	0.29	-0.27	
14,194.00	89.03	0.70	7,188.06	6,320.20	-879.27	6,380.89	0.31	-0.15	
14,289.00	90.04	359.56	7,188.83	6,415.19	-879.06	6,475.04	1.60	1.06	
14,383.00	89.82	359.21	7,188.94	6,509.19	-880.07	6,568.37	0.44	-0.23	
14,478.00	89.60	359.30	7,189.42	6,604.18	-881.30	6,662.71	0.25	-0.23	
14,572.00	89.34	359.30	7,190.29	6,698.16	-882.45	6,756.04	0.28	-0.28	LAST SURVEY - 14572.00' MD
14,639.00	89.34	359.30	7,191.06	6,765.16	-883.27	6,822.57	0.00	0.00	PTB - 14639.00' MD (464 FNL, 2327 FEL)

Targets									
Target Name - hit/miss target - Shape	Dip Angle (°)	Dip Dir. (°)	TVD (usft)	+N/-S (usft)	+E/-W (usft)	Northing (usft)	Easting (usft)	Latitude	Longitude
DAVIS 1K-9H-G266 BHL - actual wellpath misses target center by 11.76usft at 14639.00usft MD (7191.06 TVD, 6765.16 N, -883.27 E) - Point	0.00	0.00	7,182.00	6,769.19	-889.59	1,306,680.60	3,200,890.95	40.172998	-104.781094
DAVIS 1K 1388' TGT - actual wellpath misses target center by 7.05usft at 9260.24usft MD (7181.65 TVD, 1387.87 N, -878.87 E) - Point	0.00	0.00	7,187.00	1,388.00	-883.45	1,301,299.64	3,200,940.91	40.158226	-104.781071
DAVIS 1K-9H-G266 TPZ - actual wellpath misses target center by 30.46usft at 7678.84usft MD (7183.27 TVD, -191.02 N, -870.56 E) - Point	0.00	0.00	7,211.00	-197.04	-881.64	1,299,714.67	3,200,955.62	40.153875	-104.781065
DAVIS 1K 3530' TGT - actual wellpath misses target center by 6.86usft at 11403.00usft MD (7160.19 TVD, 3530.02 N, -886.69 E) - Point	0.00	0.00	7,167.00	3,530.00	-885.89	1,303,441.55	3,200,921.02	40.164106	-104.781080

Design Annotations					
Measured Depth (usft)	Vertical Depth (usft)	Local Coordinates			
		+N/-S (usft)	+E/-W (usft)	Comment	
7,672.66	7,181.90	-197.04	-870.72	TPZ - 7672.66' MD (2168 FNL, 2301 FEL)	
14,572.00	7,190.29	6,698.16	-882.45	LAST SURVEY - 14572.00' MD	
14,639.00	7,191.06	6,765.16	-883.27	PTB - 14639.00' MD (464 FNL, 2327 FEL)	

Checked By: _____	Approved By: _____	Date: _____
-------------------	--------------------	-------------