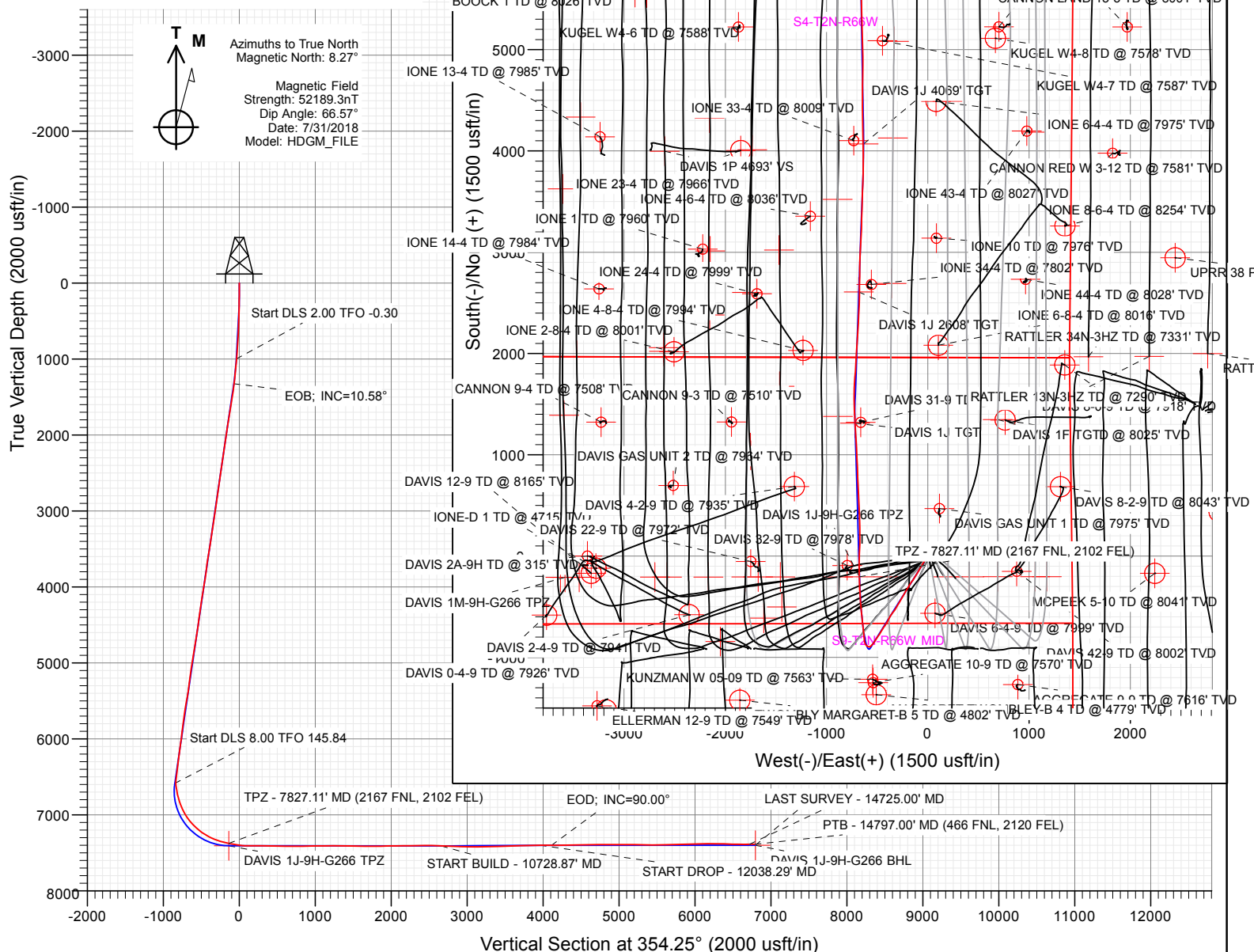




Type User	Target No Target (Freehand)	Azimuth 354.25	Origin Type Slot	N/S 0.00	E/W 0.00	From TWD 0.00
Name	TVD	+N-S	+E/W		Latitude	Longitude
DAVIS 1J 4069' TGT	7400.00	4069.00	-633.85		40.165610	-104.7800
DAVIS 1J-9H-G266 BHL	7400.00	6762.47	-680.53		40.173004	-104.7800
DAVIS 1J-9H-G266 TPZ	7400.00	-205.45	-674.93		40.153876	-104.7800
DAVIS 1J TGT	7408.00	1312.72	-719.51		40.156044	-104.7800
DAVIS 1J 2808' TGT	7410.00	2908.00	-681.53		40.161599	-104.7800

Project: DJ BASIN  
Site: S4-T2N-R66W  
Well: DAVIS 1J-9H-G266  
Wellbore: OH  
Design: FINAL



WELL DETAILS: DAVIS 1J-9H-G266

4917.00						
+N/-S	+E/-W	Northing	Easting	Latitude	Longitude	
0.00	0.00	1299927.60	3201840.52	40.154440	-104.777893	DAVIS 1J-9H





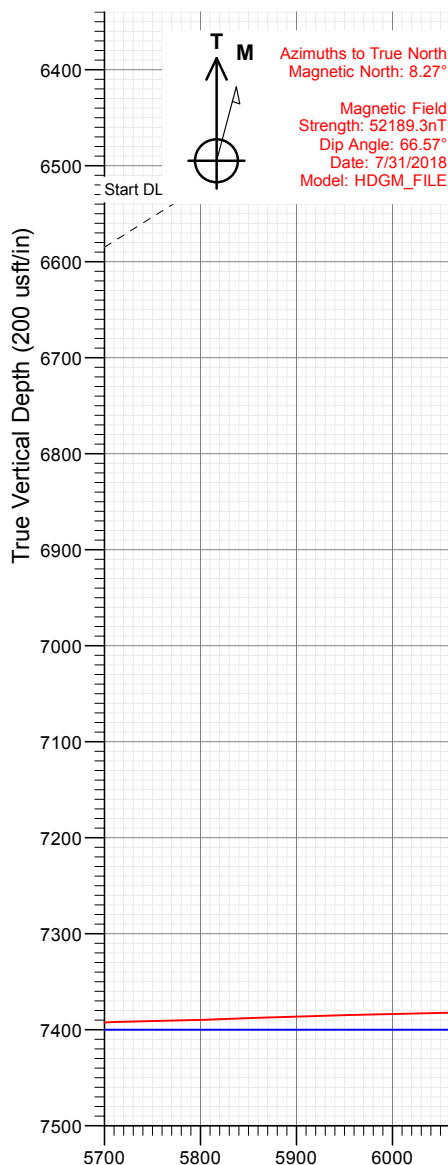
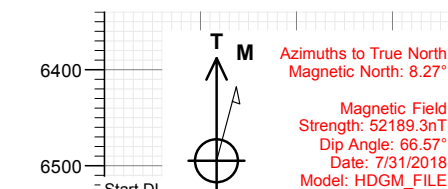
CRESTONE PEAK  
RESOURCES

FINAL  
DAVIS 1J-9H-G266  
377337 185121 391137 185228  
23 KB @ 4940.00usft  
Ground Level @ 4917.00  
North American Datum 1983

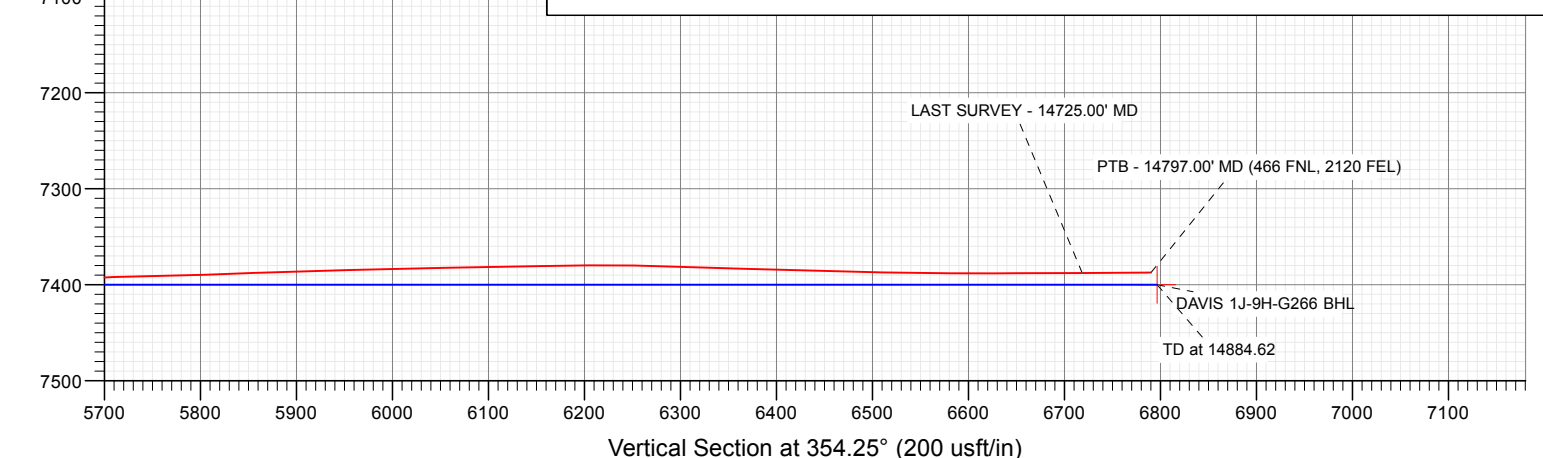
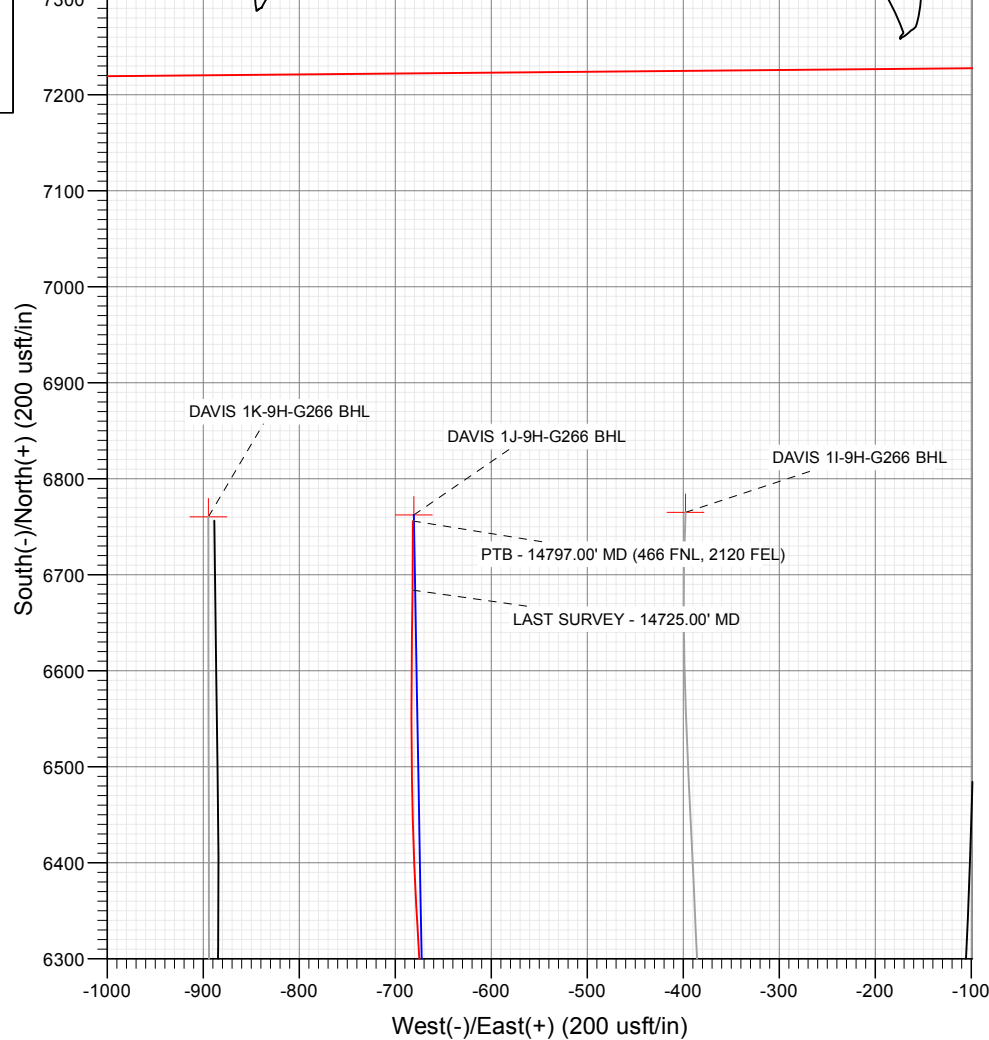
Well DAVIS 1J-9H-G266 - Slot DAVIS 1J-9H, True North

Type	Target	No Target (Freehand)	Azimuth	Origin Type	N/S	E/W	From TVD
Name	TVD	+N-S	+E-W	Latitude	Longitude		
DAVIS 1J 4069' TGT	7400.00	4069.00	633.85	40.165610	-104.750151		
DAVIS 1J-9H-G266 BHL	7400.00	6762.47	-680.53	40.173004	-104.780328		
DAVIS 1J-9H-G266 TPZ	7406.00	-205.45	-674.93	40.153876	-104.750308		
DAVIS 1J TGT	7408.00	1312.92	-719.51	40.158044	-104.750467		
DAVIS 1J 2608' TGT	7410.00	2608.00	-681.53	40.161599	-104.780331		

Project: DJ BASIN  
Site: S4-T2N-R66W  
Well: DAVIS 1J-9H-G266  
Wellbore: OH  
Design: FINAL



SECTION DETAILS											
Sec	MD	Inc	Azi	TVD	+N/-S	+E/-W	Dleg	TFace	VSect	Target	
1	0.00	0.00	0.00	0.00	0.00	0.00	0.00	0.00	0.00		
2	200.00	0.00	0.00	200.00	0.00	0.00	0.00	0.00	0.00		
3	400.00	4.00	212.22	399.84	-5.90	-3.72	2.00	212.22	-5.50		
4	1000.00	4.00	212.22	998.38	-41.31	-26.04	0.00	0.00	-38.50		
5	1328.93	10.58	212.03	1324.47	-76.65	-48.19	2.00	-0.30	-71.44		
6	6680.23	10.58	212.03	6584.82	-909.51	-569.22	0.00	0.00	-847.95		
7	7914.09	89.92	358.32	7406.00	-205.45	-674.93	8.00	145.84	-136.84	DAVIS 1J-9H-G266 TPZ	
8	9433.13	89.92	358.32	7408.00	1312.92	-719.51	0.00	0.00	1378.37	DAVIS 1J TGT	
9	9613.82	89.91	1.93	7408.26	1493.58	-719.12	2.00	90.22	1558.08		
10	10728.87	89.91	1.93	7410.00	2608.00	-681.53	0.00	0.00	2663.13	DAVIS 1J 2608' TGT	
11	10754.70	90.42	2.03	7409.93	2633.81	-680.63	2.00	10.65	2688.73		
12	12038.29	90.42	2.03	7400.56	3916.56	-635.22	0.00	0.00	3960.48		
13	12190.75	90.00	359.01	7400.00	4069.00	-633.85	2.00	-97.88	4112.02	DAVIS 1J 4069' TGT	
14	14884.62	90.00	359.01	7400.00	6762.47	-680.53	0.00	0.00	6796.62	DAVIS 1J-9H-G266 BHL	



WELL DETAILS: DAVIS 1J-9H-G266

4917.00  
+N/-S 0.00 +E/-W 0.00 Northing 1299927.60 Easting 3201840.52 Latitude 40.154440 Longitude -104.777893 DAVIS 1J-9H

CATHEDRAL



## Survey Report

<b>Company:</b>	Crestone Peak Resources	<b>Local Co-ordinate Reference:</b>	Well DAVIS 1J-9H-G266 - Slot DAVIS 1J-9H
<b>Project:</b>	DJ BASIN	<b>TVD Reference:</b>	23' KB @ 4940.00usft
<b>Site:</b>	S4-T2N-R66W	<b>MD Reference:</b>	23' KB @ 4940.00usft
<b>Well:</b>	DAVIS 1J-9H-G266	<b>North Reference:</b>	True
<b>Wellbore:</b>	OH	<b>Survey Calculation Method:</b>	Minimum Curvature
<b>Design:</b>	FINAL	<b>Database:</b>	USA EDM 5000 Multi Users DB

<b>Project</b>	DJ BASIN		
<b>Map System:</b>	US State Plane 1983	<b>System Datum:</b>	Mean Sea Level
<b>Geo Datum:</b>	North American Datum 1983		
<b>Map Zone:</b>	Colorado Northern Zone		

Site		S4-T2N-R66W			
Site Position:		Northing:	1,300,048.95 usft	Latitude:	40.154783
From:	Map	Easting:	3,201,389.75 usft	Longitude:	-104.779502
Position Uncertainty:	0.00 usft	Slot Radius:	13-3/16 "	Grid Convergence:	0.47 °

Well	DAVIS 1J-9H-G266 - Slot DAVIS 1J-9H					
Well Position	+N/-S	0.00 usft	Northing:	1,299,927.60 usft	Latitude:	40.154440
	+E/-W	0.00 usft	Easting:	3,201,840.52 usft	Longitude:	-104.777893
Position Uncertainty		0.00 usft	Wellhead Elevation:	usft	Ground Level:	4,917.00 usft

<b>Wellbore</b>	OH				
<b>Magnetics</b>	<b>Model Name</b>	<b>Sample Date</b>	<b>Declination (°)</b>	<b>Dip Angle (°)</b>	<b>Field Strength (nT)</b>
	HDGM_FILE	7/31/2018	8.27	66.57	52,189.30000000

<b>Design</b>	FINAL				
<b>Audit Notes:</b>					
<b>Version:</b>	1.0	<b>Phase:</b>	ACTUAL	<b>Tie On Depth:</b>	0.00
<b>Vertical Section:</b>	<b>Depth From (TVD) (usft)</b>	<b>+N/-S (usft)</b>	<b>+E/-W (usft)</b>	<b>Direction (°)</b>	
	0.00	0.00	0.00	354.25	

<b>Survey Program</b>	<b>Date</b>	8/7/2018			
<b>From (usft)</b>	<b>To (usft)</b>	<b>Survey (Wellbore)</b>	<b>Tool Name</b>	<b>Description</b>	
107.00	2,118.00	Survey #1 (OH)	VESSI_GYROFLEX	VESSI Gyroflex Gyro	
2,275.00	14,797.00	Survey #2 (OH)	MWD+HDGM	OWSG MWD + HDGM	

<b>Survey</b>									
<b>Measured Depth (usft)</b>	<b>Inclination (°)</b>	<b>Azimuth (°)</b>	<b>Vertical Depth (usft)</b>	<b>+N/-S (usft)</b>	<b>+E/-W (usft)</b>	<b>Vertical Section (usft)</b>	<b>Dogleg Rate (°/100usf)</b>	<b>Build Rate (°/100u)</b>	<b>Formations / Comments</b>
0.00	0.00	0.00	0.00	0.00	0.00	0.00	0.00	0.00	
107.00	0.08	277.08	107.00	0.01	-0.07	0.02	0.07	0.07	
138.00	0.21	285.96	138.00	0.03	-0.15	0.04	0.42	0.42	
170.00	0.24	222.47	170.00	-0.01	-0.25	0.02	0.74	0.09	
201.00	0.46	225.20	201.00	-0.14	-0.38	-0.10	0.71	0.71	
233.00	0.75	215.96	233.00	-0.40	-0.60	-0.34	0.95	0.91	
264.00	0.83	217.99	263.99	-0.74	-0.86	-0.65	0.27	0.26	
296.00	1.05	217.20	295.99	-1.16	-1.18	-1.04	0.69	0.69	
327.00	1.18	216.76	326.98	-1.64	-1.54	-1.48	0.42	0.42	
359.00	1.45	220.71	358.98	-2.21	-2.00	-2.00	0.89	0.84	
390.00	1.45	222.12	389.97	-2.80	-2.52	-2.53	0.12	0.00	
422.00	1.64	226.87	421.95	-3.41	-3.12	-3.08	0.72	0.59	

## Survey Report

<b>Company:</b>	Crestone Peak Resources	<b>Local Co-ordinate Reference:</b>	Well DAVIS 1J-9H-G266 - Slot DAVIS 1J-9H
<b>Project:</b>	DJ BASIN	<b>TVD Reference:</b>	23' KB @ 4940.00usft
<b>Site:</b>	S4-T2N-R66W	<b>MD Reference:</b>	23' KB @ 4940.00usft
<b>Well:</b>	DAVIS 1J-9H-G266	<b>North Reference:</b>	True
<b>Wellbore:</b>	OH	<b>Survey Calculation Method:</b>	Minimum Curvature
<b>Design:</b>	FINAL	<b>Database:</b>	USA EDM 5000 Multi Users DB

Survey									
Measured Depth (usft)	Inclination (°)	Azimuth (°)	Vertical Depth (usft)	+N/-S (usft)	+E/-W (usft)	Vertical Section (usft)	Dogleg Rate (°/100usf)	Build Rate (°/100u)	Formations / Comments
453.00	1.69	218.87	452.94	-4.07	-3.73	-3.68	0.77	0.16	
485.00	2.02	213.33	484.92	-4.91	-4.34	-4.45	1.17	1.03	
517.00	2.28	211.30	516.90	-5.93	-4.98	-5.40	0.85	0.81	
548.00	2.55	209.55	547.87	-7.05	-5.64	-6.45	0.90	0.87	
580.00	2.96	208.75	579.84	-8.40	-6.39	-7.71	1.29	1.28	
611.00	2.98	210.07	610.80	-9.80	-7.18	-9.03	0.23	0.06	
679.00	4.12	211.42	678.66	-13.41	-9.34	-12.41	1.68	1.68	
773.00	5.58	211.29	772.32	-20.20	-13.47	-18.75	1.55	1.55	
868.00	6.01	214.24	866.84	-28.26	-18.67	-26.24	0.55	0.45	
962.00	5.13	213.80	960.39	-35.82	-23.78	-33.25	0.94	-0.94	
1,057.00	6.04	211.83	1,054.94	-43.59	-28.77	-40.49	0.98	0.96	
1,151.00	6.42	215.43	1,148.39	-52.08	-34.43	-48.36	0.58	0.40	
1,246.00	7.16	213.87	1,242.72	-61.32	-40.81	-56.92	0.80	0.78	
1,340.00	8.99	211.21	1,335.79	-72.47	-47.88	-67.30	1.99	1.95	
1,435.00	11.13	209.61	1,429.32	-86.79	-56.26	-80.72	2.27	2.25	
1,529.00	11.53	210.31	1,521.49	-102.79	-65.48	-95.71	0.45	0.43	
1,624.00	11.63	212.22	1,614.55	-119.08	-75.38	-110.93	0.42	0.11	
1,718.00	10.82	212.99	1,706.76	-134.50	-85.23	-125.28	0.88	-0.86	
1,813.00	10.78	208.21	1,800.07	-149.81	-94.29	-139.61	0.94	-0.04	
1,907.00	11.65	208.96	1,892.28	-165.86	-103.04	-154.70	0.94	0.93	
2,002.00	10.89	209.91	1,985.45	-182.03	-112.16	-169.88	0.82	-0.80	
2,118.00	11.25	212.30	2,099.29	-201.09	-123.67	-187.69	0.50	0.31	
2,275.00	9.84	210.50	2,253.63	-225.60	-138.66	-210.57	0.92	-0.90	
2,369.00	10.15	219.90	2,346.21	-238.87	-148.05	-222.84	1.76	0.33	
2,464.00	9.40	217.97	2,439.83	-251.41	-158.20	-234.30	0.86	-0.79	
2,558.00	10.77	211.29	2,532.38	-264.97	-167.48	-246.86	1.91	1.46	
2,653.00	9.93	209.88	2,625.83	-279.66	-176.17	-260.60	0.92	-0.88	
2,747.00	11.60	212.96	2,718.18	-294.62	-185.35	-274.56	1.88	1.78	
2,842.00	11.03	211.38	2,811.33	-310.39	-195.28	-289.26	0.68	-0.60	
2,936.00	10.72	210.41	2,903.64	-325.61	-204.39	-303.49	0.38	-0.33	
3,031.00	10.28	211.38	2,997.05	-340.46	-213.27	-317.38	0.50	-0.46	
3,125.00	9.76	214.10	3,089.62	-354.22	-222.11	-330.19	0.75	-0.55	
3,220.00	10.68	211.38	3,183.11	-368.40	-231.21	-343.39	1.09	0.97	
3,314.00	10.06	211.20	3,275.58	-382.86	-240.00	-356.89	0.66	-0.66	
3,409.00	11.73	206.89	3,368.86	-398.57	-248.66	-371.66	1.95	1.76	
3,504.00	10.42	206.01	3,462.09	-414.91	-256.80	-387.09	1.39	-1.38	
3,598.00	11.29	209.71	3,554.41	-430.54	-265.09	-401.82	1.19	0.93	
3,692.00	10.20	210.58	3,646.76	-445.70	-273.88	-416.02	1.17	-1.16	
3,787.00	9.05	210.06	3,740.42	-459.41	-281.90	-428.85	1.21	-1.21	
3,882.00	9.93	216.12	3,834.12	-472.49	-290.47	-441.01	1.40	0.93	
3,976.00	11.87	210.41	3,926.42	-487.38	-300.15	-454.85	2.36	2.06	
4,071.00	10.81	209.62	4,019.57	-503.55	-309.50	-470.01	1.13	-1.12	
4,165.00	10.64	210.06	4,111.93	-518.72	-318.20	-484.23	0.20	-0.18	
4,260.00	12.26	216.21	4,205.04	-534.45	-328.55	-498.85	2.13	1.71	
4,377.00	10.64	217.09	4,319.70	-553.09	-342.41	-516.01	1.39	-1.38	
4,472.00	9.58	217.44	4,413.23	-566.37	-352.50	-528.20	1.12	-1.12	
4,566.00	12.00	213.84	4,505.56	-580.70	-362.70	-541.44	2.67	2.57	
4,661.00	10.90	209.44	4,598.67	-596.72	-372.61	-556.39	1.48	-1.16	
4,756.00	10.37	208.21	4,692.04	-612.08	-381.07	-570.82	0.61	-0.56	
4,850.00	10.02	206.54	4,784.55	-626.85	-388.72	-584.75	0.49	-0.37	
4,945.00	12.31	210.23	4,877.75	-643.00	-397.52	-599.93	2.52	2.41	
5,039.00	11.34	209.09	4,969.75	-659.73	-407.05	-615.63	1.06	-1.03	
5,134.00	10.81	214.89	5,062.99	-675.20	-416.69	-630.06	1.30	-0.56	

# Survey Report

<b>Company:</b>	Crestone Peak Resources	<b>Local Co-ordinate Reference:</b>	Well DAVIS 1J-9H-G266 - Slot DAVIS 1J-9H
<b>Project:</b>	DJ BASIN	<b>TVD Reference:</b>	23' KB @ 4940.00usft
<b>Site:</b>	S4-T2N-R66W	<b>MD Reference:</b>	23' KB @ 4940.00usft
<b>Well:</b>	DAVIS 1J-9H-G266	<b>North Reference:</b>	True
<b>Wellbore:</b>	OH	<b>Survey Calculation Method:</b>	Minimum Curvature
<b>Design:</b>	FINAL	<b>Database:</b>	USA EDM 5000 Multi Users DB

Survey									
Measured Depth (usft)	Inclination (°)	Azimuth (°)	Vertical Depth (usft)	+N/-S (usft)	+E/-W (usft)	Vertical Section (usft)	Dogleg Rate (°/100usf)	Build Rate (°/100u)	Formations / Comments
5,228.00	9.38	215.68	5,155.53	-688.65	-426.20	-642.49	1.53	-1.52	
5,323.00	10.15	211.82	5,249.15	-702.06	-435.13	-654.93	1.06	0.81	
5,417.00	9.89	215.51	5,341.72	-715.66	-444.19	-667.56	0.74	-0.28	
5,512.00	11.51	207.33	5,435.07	-730.73	-453.28	-681.64	2.33	1.71	
5,606.00	13.32	210.85	5,526.87	-748.36	-463.14	-698.19	2.09	1.93	
5,700.00	10.68	211.38	5,618.81	-765.09	-473.23	-713.83	2.81	-2.81	
5,794.00	10.85	216.82	5,711.16	-779.61	-483.07	-727.29	1.10	0.18	
5,889.00	8.48	216.47	5,804.80	-792.40	-492.59	-739.06	2.50	-2.49	
5,983.00	9.62	215.77	5,897.63	-804.35	-501.30	-750.08	1.22	1.21	
6,078.00	8.57	207.33	5,991.44	-817.08	-509.19	-761.95	1.78	-1.11	
6,172.00	10.50	209.18	6,084.14	-830.78	-516.58	-774.85	2.08	2.05	
6,266.00	10.24	217.00	6,176.60	-844.93	-525.79	-788.00	1.52	-0.28	
6,361.00	8.48	219.90	6,270.34	-857.05	-535.36	-799.10	1.92	-1.85	
6,455.00	11.78	220.08	6,362.86	-869.71	-545.99	-810.64	3.51	3.51	
6,550.00	11.87	222.45	6,455.84	-884.34	-558.83	-823.91	0.52	0.09	
6,644.00	9.71	240.29	6,548.20	-895.41	-572.24	-833.57	4.20	-2.30	
6,691.00	12.17	277.47	6,594.40	-896.73	-580.61	-834.05	15.57	5.23	
6,738.00	15.25	299.35	6,640.09	-893.05	-590.92	-829.36	12.72	6.55	
6,785.00	15.43	306.65	6,685.41	-886.29	-601.32	-821.59	4.12	0.38	
6,833.00	14.90	317.72	6,731.75	-877.91	-610.60	-812.32	6.12	-1.10	
6,880.00	16.70	335.13	6,777.00	-867.31	-617.51	-801.08	10.74	3.83	
6,928.00	19.29	344.27	6,822.66	-853.41	-622.56	-786.75	7.97	5.40	
6,975.00	21.31	350.24	6,866.74	-837.52	-626.12	-770.58	6.15	4.30	
7,022.00	23.34	355.96	6,910.22	-819.81	-628.22	-752.75	6.32	4.32	
7,069.00	26.63	357.36	6,952.82	-800.00	-629.36	-732.92	7.11	7.00	
7,116.00	30.50	354.29	6,994.09	-777.60	-631.03	-710.46	8.80	8.23	
7,163.00	34.23	352.97	7,033.78	-752.60	-633.84	-685.31	8.08	7.94	
7,211.00	39.07	353.32	7,072.28	-724.16	-637.25	-656.67	10.09	10.08	
7,258.00	41.62	354.02	7,108.10	-693.92	-640.60	-626.25	5.51	5.43	
7,305.00	45.44	353.06	7,142.17	-661.77	-644.25	-593.89	8.25	8.13	
7,352.00	47.46	353.85	7,174.55	-627.93	-648.13	-559.83	4.47	4.30	
7,399.00	50.27	354.20	7,205.47	-592.72	-651.81	-524.44	6.00	5.98	
7,446.00	54.89	353.93	7,234.02	-555.61	-655.68	-487.12	9.84	9.83	
7,493.00	59.15	355.60	7,259.60	-516.35	-659.26	-447.71	9.54	9.06	
7,540.00	61.61	355.87	7,282.83	-475.61	-662.30	-406.86	5.26	5.23	
7,587.00	64.56	355.60	7,304.10	-433.82	-665.41	-364.97	6.30	6.28	
7,634.00	68.69	356.22	7,322.74	-390.80	-668.49	-321.86	8.87	8.79	
7,682.00	72.51	356.48	7,338.68	-345.63	-671.37	-276.62	7.97	7.96	
7,729.00	74.40	357.54	7,352.07	-300.64	-673.71	-231.63	4.57	4.02	
7,776.00	75.94	358.77	7,364.10	-255.23	-675.18	-186.30	4.14	3.28	
7,823.00	77.87	358.24	7,374.75	-209.47	-676.37	-140.65	4.25	4.11	
7,827.11	78.06	358.33	7,375.60	-205.45	-676.49	-136.64	5.18	4.68	TPZ - 7827.11' MD (2167 FNL, 2102 FEL)
7,870.00	80.07	359.30	7,383.74	-163.35	-677.36	-94.66	5.18	4.68	
7,917.00	80.68	359.21	7,391.60	-117.02	-677.96	-48.50	1.31	1.30	
7,964.00	81.48	0.00	7,398.88	-70.59	-678.28	-2.28	2.38	1.70	
8,059.00	88.24	3.07	7,407.39	23.93	-675.73	91.51	7.81	7.12	
8,153.00	89.69	1.14	7,409.09	117.85	-672.28	184.61	2.57	1.54	
8,248.00	91.19	0.00	7,408.36	212.83	-671.34	279.02	1.98	1.58	
8,342.00	89.34	358.42	7,407.93	306.82	-672.63	372.66	2.59	-1.97	
8,437.00	88.95	358.77	7,409.34	401.78	-674.96	467.38	0.55	-0.41	
8,532.00	89.47	356.83	7,410.65	496.69	-678.61	562.18	2.11	0.55	
8,626.00	88.73	356.83	7,412.13	590.54	-683.81	656.08	0.79	-0.79	
8,720.00	88.90	357.19	7,414.07	684.39	-688.71	749.95	0.42	0.18	

## Survey Report

<b>Company:</b>	Crestone Peak Resources	<b>Local Co-ordinate Reference:</b>	Well DAVIS 1J-9H-G266 - Slot DAVIS 1J-9H
<b>Project:</b>	DJ BASIN	<b>TVD Reference:</b>	23' KB @ 4940.00usft
<b>Site:</b>	S4-T2N-R66W	<b>MD Reference:</b>	23' KB @ 4940.00usft
<b>Well:</b>	DAVIS 1J-9H-G266	<b>North Reference:</b>	True
<b>Wellbore:</b>	OH	<b>Survey Calculation Method:</b>	Minimum Curvature
<b>Design:</b>	FINAL	<b>Database:</b>	USA EDM 5000 Multi Users DB

Survey									
Measured Depth (usft)	Inclination (°)	Azimuth (°)	Vertical Depth (usft)	+N/-S (usft)	+E/-W (usft)	Vertical Section (usft)	Dogleg Rate (°/100usf)	Build Rate (°/100u)	Formations / Comments
8,814.00	90.92	358.50	7,414.22	778.32	-692.24	843.75	2.56	2.15	
8,909.00	91.80	357.54	7,411.97	873.23	-695.52	938.52	1.37	0.93	
9,003.00	91.06	357.45	7,409.62	967.11	-699.63	1,032.34	0.79	-0.79	
9,098.00	90.75	357.01	7,408.12	1,061.99	-704.22	1,127.20	0.57	-0.33	
9,193.00	90.13	356.83	7,407.39	1,156.85	-709.33	1,222.09	0.68	-0.65	
9,287.00	89.52	356.83	7,407.68	1,250.70	-714.52	1,316.00	0.65	-0.65	
9,382.00	89.12	356.75	7,408.80	1,345.55	-719.84	1,410.90	0.43	-0.42	
9,476.00	88.37	356.92	7,410.86	1,439.38	-725.03	1,504.78	0.82	-0.80	
9,571.00	89.78	359.74	7,412.40	1,534.31	-727.80	1,599.51	3.32	1.48	
9,666.00	88.99	1.76	7,413.42	1,629.30	-726.56	1,693.89	2.28	-0.83	
9,760.00	91.01	3.69	7,413.42	1,723.18	-722.09	1,786.85	2.97	2.15	
9,854.00	91.23	3.78	7,411.58	1,816.96	-715.97	1,879.55	0.25	0.23	
9,948.00	91.01	3.16	7,409.74	1,910.77	-710.28	1,972.32	0.70	-0.23	
10,042.00	90.70	3.60	7,408.34	2,004.60	-704.74	2,065.12	0.57	-0.33	
10,137.00	90.53	3.60	7,407.32	2,099.40	-698.77	2,158.85	0.18	-0.18	
10,232.00	90.75	3.51	7,406.26	2,194.22	-692.88	2,252.59	0.25	0.23	
10,327.00	90.84	3.43	7,404.94	2,289.03	-687.13	2,346.36	0.13	0.09	
10,421.00	91.14	3.43	7,403.32	2,382.85	-681.51	2,439.14	0.32	0.32	
10,516.00	89.30	1.58	7,402.95	2,477.75	-677.36	2,533.15	2.75	-1.94	
10,610.00	86.35	0.70	7,406.52	2,571.65	-675.49	2,626.39	3.27	-3.14	
10,704.00	88.59	0.88	7,410.67	2,665.55	-674.19	2,719.68	2.39	2.38	
10,798.00	87.45	359.65	7,413.92	2,759.49	-673.76	2,813.10	1.78	-1.21	
10,893.00	87.85	0.61	7,417.81	2,854.40	-673.54	2,907.52	1.09	0.42	
10,987.00	89.25	3.07	7,420.19	2,948.32	-670.53	3,000.66	3.01	1.49	
11,082.00	89.91	3.51	7,420.89	3,043.16	-665.07	3,094.48	0.83	0.69	
11,176.00	91.67	2.64	7,419.59	3,137.01	-660.03	3,187.35	2.09	1.87	
11,271.00	91.54	2.28	7,416.93	3,231.88	-655.96	3,281.34	0.40	-0.14	
11,365.00	89.69	0.97	7,415.92	3,325.83	-653.29	3,374.55	2.41	-1.97	
11,460.00	91.01	1.76	7,415.34	3,420.80	-651.03	3,468.81	1.62	1.39	
11,554.00	92.42	1.93	7,412.53	3,514.71	-648.00	3,561.95	1.51	1.50	
11,648.00	92.46	1.76	7,408.53	3,608.57	-644.98	3,655.04	0.19	0.04	
11,742.00	92.94	1.84	7,404.10	3,702.42	-642.03	3,748.12	0.52	0.51	
11,837.00	90.88	1.32	7,400.93	3,797.33	-639.41	3,842.28	2.24	-2.17	
11,930.00	90.44	0.44	7,399.86	3,890.31	-637.98	3,934.65	1.06	-0.47	
12,025.00	89.47	359.65	7,399.93	3,985.31	-637.91	4,029.17	1.32	-1.02	
12,119.00	89.17	359.03	7,401.05	4,079.30	-638.99	4,122.79	0.73	-0.32	
12,213.00	91.41	358.59	7,400.57	4,173.27	-640.94	4,216.48	2.43	2.38	
12,307.00	91.36	357.98	7,398.30	4,267.20	-643.76	4,310.22	0.65	-0.05	
12,402.00	90.70	0.09	7,396.59	4,362.16	-645.36	4,404.87	2.33	-0.69	
12,496.00	90.75	0.26	7,395.41	4,456.15	-645.07	4,498.36	0.19	0.05	
12,590.00	89.78	359.74	7,394.97	4,550.15	-645.07	4,591.89	1.17	-1.03	
12,685.00	91.06	0.88	7,394.27	4,645.14	-644.55	4,686.35	1.80	1.35	
12,780.00	91.71	1.41	7,391.98	4,740.10	-642.66	4,780.63	0.88	0.68	
12,874.00	89.82	359.56	7,390.72	4,834.08	-641.86	4,874.06	2.81	-2.01	
12,969.00	90.57	359.74	7,390.40	4,929.07	-642.44	4,968.64	0.81	0.79	
13,063.00	89.78	357.71	7,390.11	5,023.04	-644.53	5,062.35	2.32	-0.84	
13,157.00	88.29	358.86	7,391.70	5,116.98	-647.35	5,156.10	2.00	-1.59	
13,252.00	88.24	358.68	7,394.57	5,211.92	-649.38	5,250.76	0.20	-0.05	
13,346.00	89.52	358.86	7,396.41	5,305.88	-651.40	5,344.44	1.38	1.36	
13,440.00	90.44	358.50	7,396.44	5,399.85	-653.57	5,438.16	1.05	0.98	
13,535.00	90.84	358.33	7,395.38	5,494.81	-656.20	5,532.91	0.46	0.42	
13,629.00	91.06	358.77	7,393.82	5,588.77	-658.57	5,626.63	0.52	0.23	
13,712.00	91.32	358.94	7,392.10	5,671.73	-660.23	5,709.34	0.37	0.31	



## Survey Report

<b>Company:</b>	Crestone Peak Resources	<b>Local Co-ordinate Reference:</b>	Well DAVIS 1J-9H-G266 - Slot DAVIS 1J-9H
<b>Project:</b>	DJ BASIN	<b>TVD Reference:</b>	23' KB @ 4940.00usft
<b>Site:</b>	S4-T2N-R66W	<b>MD Reference:</b>	23' KB @ 4940.00usft
<b>Well:</b>	DAVIS 1J-9H-G266	<b>North Reference:</b>	True
<b>Wellbore:</b>	OH	<b>Survey Calculation Method:</b>	Minimum Curvature
<b>Design:</b>	FINAL	<b>Database:</b>	USA EDM 5000 Multi Users DB

Survey									
Measured Depth (usft)	Inclination (°)	Azimuth (°)	Vertical Depth (usft)	+N/-S (usft)	+E/-W (usft)	Vertical Section (usft)	Dogleg Rate (°/100usf)	Build Rate (°/100u)	Formations / Comments
13,807.00	91.63	359.03	7,389.65	5,766.68	-661.91	5,803.99	0.34	0.33	
13,901.00	92.11	358.50	7,386.59	5,860.61	-663.94	5,897.64	0.76	0.51	
13,995.00	91.41	358.24	7,383.70	5,954.53	-666.61	5,991.36	0.79	-0.74	
14,090.00	90.70	359.65	7,381.95	6,049.49	-668.36	6,086.02	1.66	-0.75	
14,185.00	91.23	359.30	7,380.35	6,144.48	-669.23	6,180.61	0.67	0.56	
14,280.00	88.33	357.45	7,380.71	6,239.42	-671.92	6,275.35	3.62	-3.05	
14,374.00	88.33	356.75	7,383.45	6,333.26	-676.68	6,369.19	0.74	0.00	
14,468.00	88.37	357.89	7,386.16	6,427.12	-681.07	6,463.02	1.21	0.04	
14,563.00	89.52	0.00	7,387.91	6,522.08	-682.82	6,557.67	2.53	1.21	
14,657.00	90.13	0.44	7,388.20	6,616.08	-682.46	6,651.16	0.80	0.65	
14,725.00	90.44	0.35	7,387.86	6,684.08	-681.99	6,718.77	0.47	0.46	LAST SURVEY - 14725.00' MD
14,797.00	90.44	0.35	7,387.31	6,756.07	-681.55	6,790.36	0.00	0.00	PTB - 14797.00' MD (466 FNL, 2120 FEL)

Targets									
Target Name - hit/miss target - Shape	Dip Angle (°)	Dip Dir. (°)	TVD (usft)	+N/-S (usft)	+E/-W (usft)	Northing (usft)	Easting (usft)	Latitude	Longitude
DAVIS 1J 2608' TGT - actual wellpath misses target center by 6.66usft at 10646.38usft MD (7408.56 TVD, 2607.97 N, -675.02 E) - Point	0.00	0.00	7,410.00	2,608.00	-681.53	1,302,529.96	3,201,137.78	40.161599	-104.780331
DAVIS 1J 4069' TGT - actual wellpath misses target center by 5.06usft at 12108.63usft MD (7400.90 TVD, 4068.93 N, -638.82 E) - Point	0.00	0.00	7,400.00	4,069.00	-633.85	1,303,991.30	3,201,173.56	40.165610	-104.780161
DAVIS 1J-9H-G266 BHL - actual wellpath misses target center by 14.25usft at 14797.00usft MD (7387.31 TVD, 6756.07 N, -681.55 E) - Point	0.00	0.00	7,400.00	6,762.47	-680.53	1,306,684.30	3,201,104.95	40.173004	-104.780328
DAVIS 1J-9H-G266 TPZ - actual wellpath misses target center by 29.81usft at 7832.84usft MD (7376.77 TVD, -199.84 N, -676.65 E) - Point	0.00	0.00	7,406.00	-205.45	-674.93	1,299,716.66	3,201,167.28	40.153876	-104.780308
DAVIS 1J TGT - actual wellpath misses target center by 1.55usft at 9349.40usft MD (7408.34 TVD, 1313.00 N, -718.00 E) - Point	0.00	0.00	7,408.00	1,312.92	-719.51	1,301,234.62	3,201,110.34	40.158044	-104.780467

Design Annotations					
Measured Depth (usft)	Vertical Depth (usft)	Local Coordinates			
		+N/-S (usft)	+E/-W (usft)	Comment	
7,827.11	7,375.60	-205.45	-676.49	TPZ - 7827.11' MD (2167 FNL, 2102 FEL)	
14,725.00	7,387.86	6,684.08	-681.99	LAST SURVEY - 14725.00' MD	
14,797.00	7,387.31	6,756.07	-681.55	PTB - 14797.00' MD (466 FNL, 2120 FEL)	

Checked By: _____	Approved By: _____	Date: _____
-------------------	--------------------	-------------