



CRESTONE PEAK  
RESOURCES

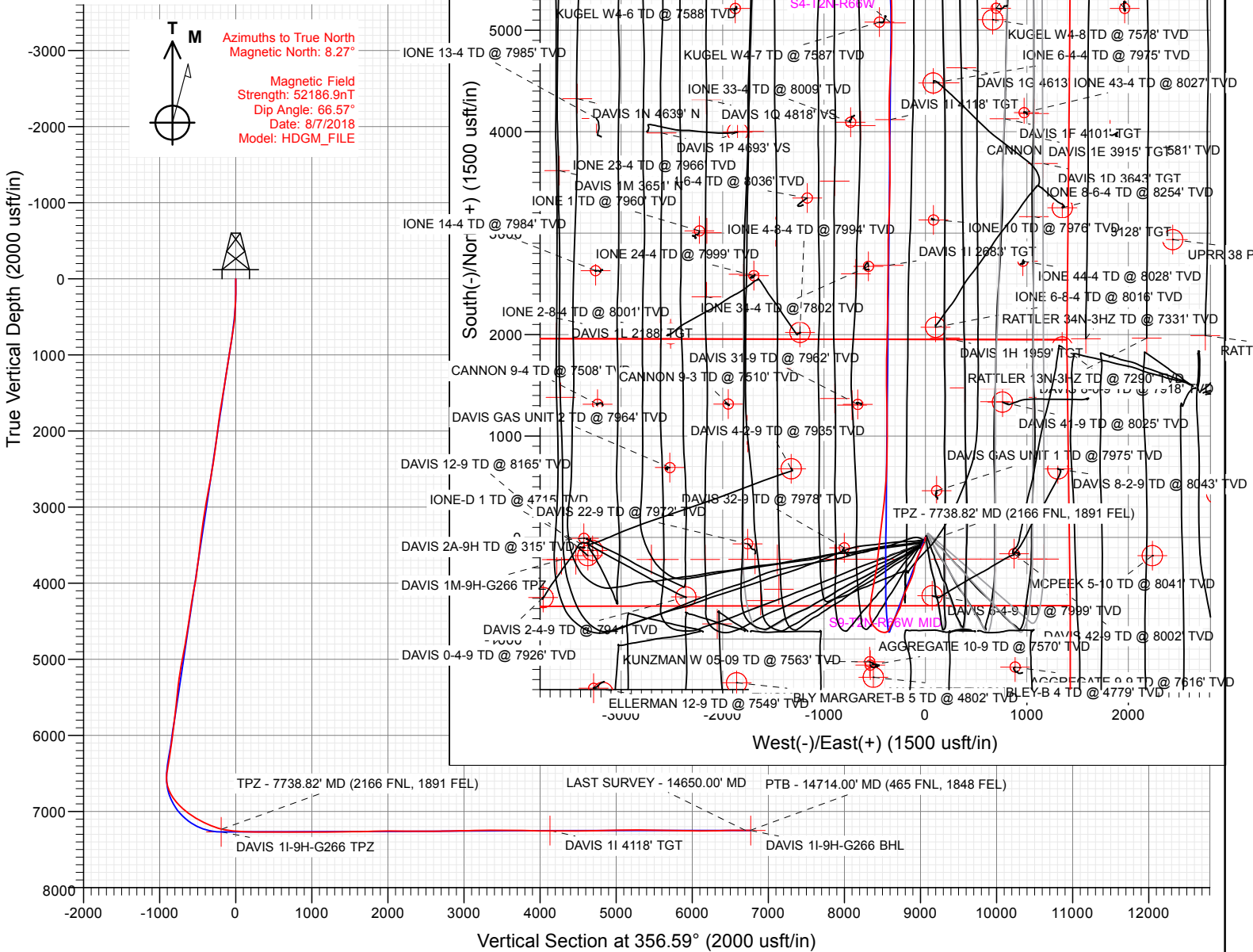
SECTION DETAILS

Sec	MD	Inc	Azi	TVD	+N/-S	+E/-W	Dleg	TFace	VSect	Target
1	0.00	0.00	0.00	0.00	0.00	0.00	0.00	0.00	0.00	
2	200.00	0.00	0.00	200.00	0.00	0.00	0.00	0.00	0.00	
3	667.24	9.34	200.86	665.17	-35.52	-13.54	2.00	200.86	-34.66	
4	6524.88	9.34	200.86	6445.08	-924.29	-352.30	0.00	0.00	-901.70	
5	7761.61	90.18	0.57	7269.00	-213.78	-392.35	8.00	159.45	-190.08	DAVIS 11-9H-G266 TPZ
6	10658.55	90.18	0.57	7260.00	2683.00	-363.36	0.00	0.00	2699.86	DAVIS 11 2683' TGT
7	10667.76	90.36	0.57	7259.96	2692.21	-363.27	2.00	0.00	2709.05	
8	12075.54	90.36	0.57	7251.06	4099.89	-349.18	0.00	0.00	4113.40	
9	12093.65	90.00	0.57	7251.00	4118.00	-349.00	2.00	180.00	4131.47	DAVIS 11 4118' TGT
10	13048.61	90.00	0.57	7251.00	5072.91	-339.44	0.00	0.00	5084.12	DAVIS 11 TGT
11	13207.75	90.00	357.39	7251.00	5232.00	-342.27	2.00	-90.00	5243.10	
12	14503.06	90.00	357.39	7251.00	6525.97	-401.24	0.00	0.00	6538.28	
13	14733.53	90.00	2.00	7251.00	6756.37	-402.46	2.00	90.00	6768.35	DAVIS 11-9H-G266 BHL

FINAL  
DAVIS 11-9H-G266  
380037 185144 402137 185226  
23 KB @ 4940.00usft  
Ground Level @ 4917.00  
North American Datum 1983  
Well DAVIS 11-9H-G266 - Slot DAVIS 11-9H, True North

Type	Target	No Target (Freehand)	Azimuth	Origin Type	N/S	E/W	From TVD
Name	DAVIS 11 4118' TGT		4118.00	4940.00	40.165768	-104.779124	
	DAVIS 11 TGT		7251.00	5072.91	-339.44	40.168390	-104.779090
	DAVIS 11-9H-G266 BHL		7251.00	6756.37	-402.46	40.173011	-104.779315
	DAVIS 11 2683' TGT		7260.00	2683.00	-363.36	40.161829	-104.779175
	DAVIS 11-9H-G266 TPZ		7269.00	-213.78	-392.35	40.153877	-104.779279

Project: DJ BASIN  
Site: S4-T2N-R66W  
Well: DAVIS 11-9H-G266  
Wellbore: OH  
Design: FINAL



WELL DETAILS: DAVIS 11-9H-G266

+N/-S	+E/-W	Northing	Easting	Latitude	Longitude	
0.00	0.00	1299936.33	3201845.41	40.154464	-104.777875	DAVIS 11-9H

CATHEDRAL



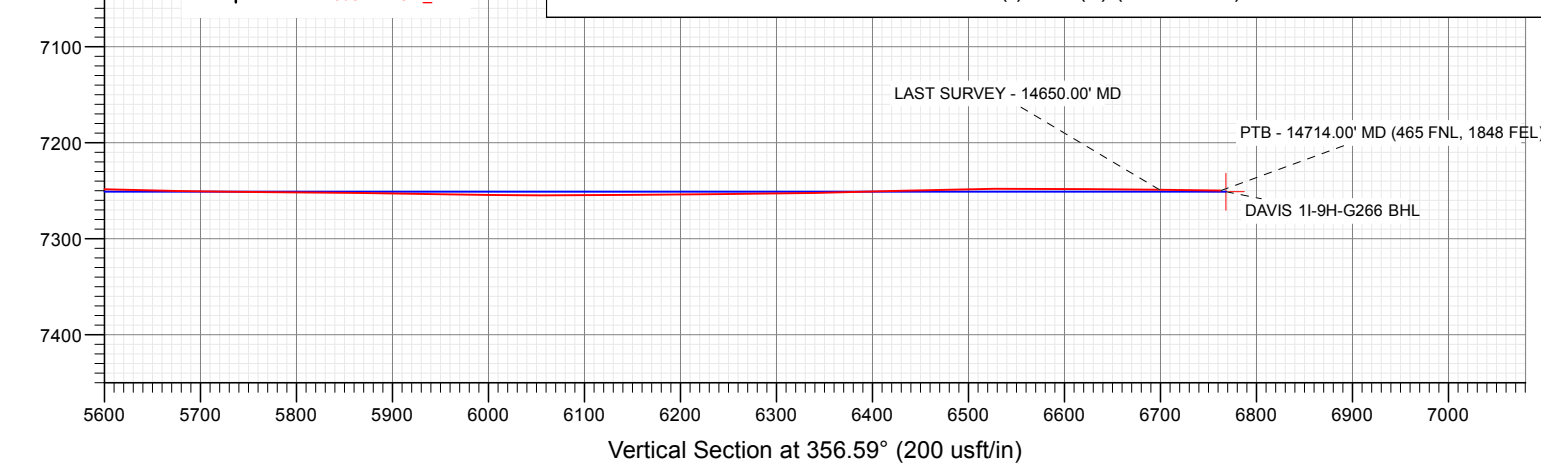
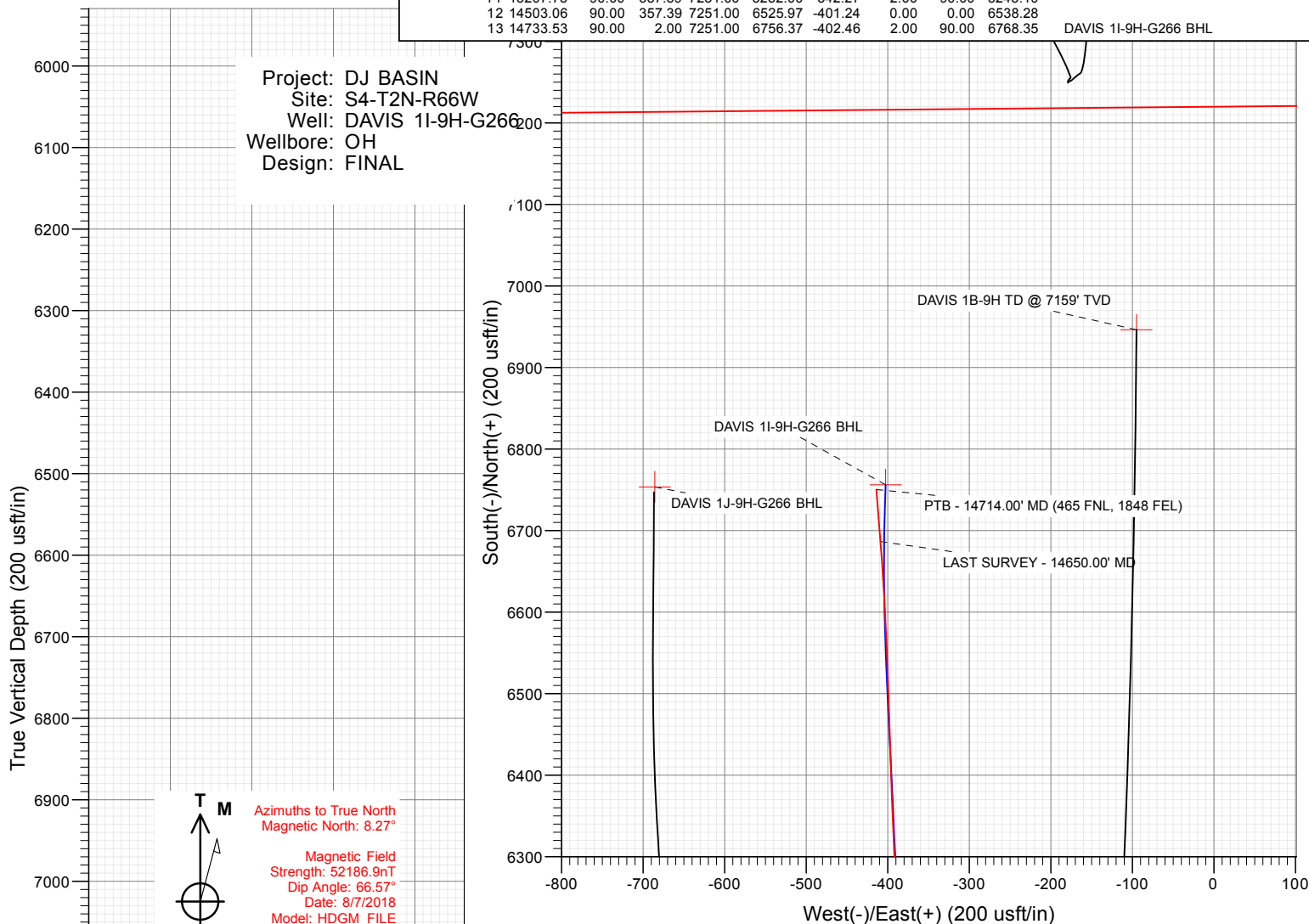


**CRESTONE PEAK**  
RESOURCES

# SECTION DETAILS

Sec	MD	Inc	Azi	TVD	+N/-S	+E/-W	Dleg	TFace	VSec	Target
1	0.00	0.00	0.00	0.00	0.00	0.00	0.00	0.00	0.00	
2	200.00	0.00	0.00	200.00	0.00	0.00	0.00	0.00	0.00	
3	667.24	9.34	200.86	665.17	-35.52	-13.54	2.00	200.86	-34.66	
4	6524.88	9.34	200.86	6445.08	-924.29	-352.30	0.00	0.00	-901.70	
5	7761.61	90.18	0.57	7269.00	-213.78	-392.35	8.00	159.45	-190.08	DAVIS 1I-9H-G266 TPZ
6	10658.55	90.18	0.57	7260.00	2683.00	-363.36	0.00	0.00	2699.86	DAVIS 1I 2683' TGT
7	10667.76	90.36	0.57	7259.96	2692.21	-363.27	2.00	0.00	2709.05	
8	12075.54	90.36	0.57	7251.06	4099.89	-349.18	0.00	0.00	4113.40	
9	12093.65	90.00	0.57	7251.00	4118.00	-349.00	2.00	180.00	4131.47	DAVIS 1I 4118' TGT
10	13048.61	90.00	0.57	7251.00	5072.91	-339.44	0.00	0.00	5084.12	DAVIS 1I TGT
11	13207.75	90.00	357.39	7251.00	5232.00	-342.27	2.00	-90.00	5243.10	
12	14503.06	90.00	357.39	7251.00	6525.97	-401.24	0.00	0.00	6538.28	
13	14733.53	90.00	2.00	7251.00	6756.37	-402.46	2.00	90.00	6768.35	DAVIS 1I-9H-G266 BHL

Project: DJ BASIN  
Site: S4-T2N-R66W  
Well: DAVIS 1I-9H-G266  
Wellbore: OH  
Design: FINAL



## WELL DETAILS: DAVIS 1I-9H-G266

4917.00  
+N/-S 0.00 +E/-W 0.00 Northing 1299936.33 Easting 3201845.41 Latitude 40.154464 Longitude -104.777875 DAVIS 1I-9H

**CATHEDRAL**



## Survey Report

<b>Company:</b>	Crestone Peak Resources	<b>Local Co-ordinate Reference:</b>	Well DAVIS 1I-9H-G266 - Slot DAVIS 1I-9H
<b>Project:</b>	DJ BASIN	<b>TVD Reference:</b>	23' KB @ 4940.00usft
<b>Site:</b>	S4-T2N-R66W	<b>MD Reference:</b>	23' KB @ 4940.00usft
<b>Well:</b>	DAVIS 1I-9H-G266	<b>North Reference:</b>	True
<b>Wellbore:</b>	OH	<b>Survey Calculation Method:</b>	Minimum Curvature
<b>Design:</b>	FINAL	<b>Database:</b>	USA EDM 5000 Multi Users DB

<b>Project</b>	DJ BASIN		
<b>Map System:</b>	US State Plane 1983	<b>System Datum:</b>	Mean Sea Level
<b>Geo Datum:</b>	North American Datum 1983		
<b>Map Zone:</b>	Colorado Northern Zone		

Site		S4-T2N-R66W			
Site Position:		Northing:	1,300,048.95 usft	Latitude:	40.154783
From:	Map	Easting:	3,201,389.75 usft	Longitude:	-104.779502
Position Uncertainty:	0.00 usft	Slot Radius:	13-3/16 "	Grid Convergence:	0.47 °

Well	DAVIS 1I-9H-G266 - Slot DAVIS 1I-9H					
Well Position	+N/-S	0.00 usft	Northing:	1,299,936.33 usft	Latitude:	40.154464
	+E/-W	0.00 usft	Easting:	3,201,845.41 usft	Longitude:	-104.777875
Position Uncertainty		0.00 usft	Wellhead Elevation:	usft	Ground Level:	4,917.00 usft

<b>Wellbore</b>	OH				
<b>Magnetics</b>	<b>Model Name</b>	<b>Sample Date</b>	<b>Declination (°)</b>	<b>Dip Angle (°)</b>	<b>Field Strength (nT)</b>
	HDGM_FILE	8/7/2018	8.27	66.57	52,186.90000000

<b>Design</b>	FINAL				
<b>Audit Notes:</b>					
<b>Version:</b>	1.0	<b>Phase:</b>	ACTUAL	<b>Tie On Depth:</b>	0.00
<b>Vertical Section:</b>	<b>Depth From (TVD) (usft)</b>	<b>+N/-S (usft)</b>	<b>+E/-W (usft)</b>	<b>Direction (°)</b>	
	0.00	0.00	0.00	356.59	

<b>Survey Program</b>	<b>Date</b>	9/6/2018			
<b>From (usft)</b>	<b>To (usft)</b>	<b>Survey (Wellbore)</b>	<b>Tool Name</b>	<b>Description</b>	
138.00	2,123.00	Survey #1 (OH)	VESSI_GYROFLEX	VESSI Gyroflex Gyro	
2,274.00	14,714.00	Survey #2 (OH)	MWD+HDGM	OWSG MWD + HDGM	

<b>Survey</b>									
<b>Measured Depth (usft)</b>	<b>Inclination (°)</b>	<b>Azimuth (°)</b>	<b>Vertical Depth (usft)</b>	<b>+N/-S (usft)</b>	<b>+E/-W (usft)</b>	<b>Vertical Section (usft)</b>	<b>Dogleg Rate (°/100usf)</b>	<b>Build Rate (°/100u)</b>	<b>Formations / Comments</b>
0.00	0.00	0.00	0.00	0.00	0.00	0.00	0.00	0.00	
138.00	0.59	302.76	138.00	0.38	-0.60	0.42	0.43	0.43	
170.00	0.54	250.70	170.00	0.42	-0.88	0.48	1.56	-0.16	
201.00	1.02	211.83	200.99	0.14	-1.16	0.21	2.22	1.55	
233.00	1.42	200.93	232.99	-0.47	-1.45	-0.38	1.44	1.25	
264.00	1.80	192.05	263.97	-1.31	-1.69	-1.20	1.46	1.23	
296.00	2.20	193.98	295.95	-2.39	-1.95	-2.27	1.27	1.25	
328.00	2.42	191.52	327.93	-3.65	-2.23	-3.51	0.75	0.69	
359.00	2.53	188.44	358.90	-4.97	-2.46	-4.81	0.56	0.35	
390.00	2.63	186.68	389.87	-6.35	-2.64	-6.18	0.41	0.32	
422.00	2.98	182.46	421.83	-7.91	-2.76	-7.73	1.27	1.09	
453.00	3.39	186.07	452.78	-9.63	-2.90	-9.44	1.47	1.32	

## Survey Report

<b>Company:</b>	Crestone Peak Resources	<b>Local Co-ordinate Reference:</b>	Well DAVIS 1I-9H-G266 - Slot DAVIS 1I-9H
<b>Project:</b>	DJ BASIN	<b>TVD Reference:</b>	23' KB @ 4940.00usft
<b>Site:</b>	S4-T2N-R66W	<b>MD Reference:</b>	23' KB @ 4940.00usft
<b>Well:</b>	DAVIS 1I-9H-G266	<b>North Reference:</b>	True
<b>Wellbore:</b>	OH	<b>Survey Calculation Method:</b>	Minimum Curvature
<b>Design:</b>	FINAL	<b>Database:</b>	USA EDM 5000 Multi Users DB

Survey									
Measured Depth (usft)	Inclination (°)	Azimuth (°)	Vertical Depth (usft)	+N/-S (usft)	+E/-W (usft)	Vertical Section (usft)	Dogleg Rate (°/100usf)	Build Rate (°/100u)	Formations / Comments
485.00	4.11	187.12	484.71	-11.71	-3.14	-11.50	2.26	2.25	
516.00	5.05	188.44	515.61	-14.16	-3.48	-13.93	3.05	3.03	
548.00	5.75	190.38	547.47	-17.13	-3.97	-16.86	2.26	2.19	
579.00	6.72	192.13	578.29	-20.43	-4.63	-20.12	3.19	3.13	
611.00	7.52	190.11	610.04	-24.32	-5.39	-23.96	2.62	2.50	
643.00	8.60	191.87	641.72	-28.73	-6.25	-28.30	3.46	3.37	
674.00	9.57	194.42	672.34	-33.49	-7.37	-32.99	3.39	3.13	
705.00	10.40	196.71	702.87	-38.67	-8.82	-38.07	2.97	2.68	
800.00	9.67	198.64	796.41	-54.44	-13.83	-53.52	0.85	-0.77	
895.00	9.30	202.25	890.11	-69.10	-19.29	-67.83	0.74	-0.39	
963.00	9.87	204.29	957.16	-79.50	-23.77	-77.95	0.98	0.84	
1,057.00	10.80	206.43	1,049.64	-94.73	-31.00	-92.72	1.07	0.99	
1,151.00	9.50	205.62	1,142.17	-109.61	-38.28	-107.14	1.39	-1.38	
1,246.00	9.85	202.59	1,235.81	-124.18	-44.79	-121.30	0.65	0.37	
1,340.00	10.40	205.80	1,328.35	-139.25	-51.57	-135.93	0.84	0.59	
1,435.00	10.97	207.78	1,421.70	-154.96	-59.52	-151.15	0.71	0.60	
1,530.00	10.42	205.18	1,515.05	-170.74	-67.38	-166.43	0.77	-0.58	
1,624.00	10.86	205.61	1,607.44	-186.41	-74.83	-181.63	0.48	0.47	
1,718.00	9.48	201.44	1,699.96	-201.61	-81.49	-196.40	1.66	-1.47	
1,813.00	8.61	197.24	1,793.78	-215.68	-86.45	-210.16	1.15	-0.92	
1,907.00	8.34	198.76	1,886.75	-228.86	-90.73	-223.05	0.37	-0.29	
2,002.00	7.30	197.03	1,980.87	-241.15	-94.71	-235.09	1.12	-1.09	
2,096.00	7.80	196.78	2,074.05	-252.97	-98.30	-246.67	0.53	0.53	
2,123.00	8.70	196.11	2,100.77	-256.68	-99.40	-250.32	3.35	3.33	
2,274.00	7.38	192.83	2,250.29	-277.11	-104.72	-270.39	0.93	-0.87	
2,368.00	9.36	192.66	2,343.28	-290.46	-107.74	-283.54	2.11	2.11	
2,462.00	8.88	190.99	2,436.09	-305.04	-110.80	-297.91	0.58	-0.51	
2,556.00	9.36	190.37	2,528.90	-319.68	-113.56	-312.36	0.52	0.51	
2,650.00	10.33	192.92	2,621.52	-335.41	-116.82	-327.87	1.13	1.03	
2,745.00	11.03	194.76	2,714.87	-352.50	-121.04	-344.68	0.82	0.74	
2,840.00	11.82	202.42	2,807.99	-370.29	-127.06	-362.07	1.80	0.83	
2,934.00	11.34	200.30	2,900.08	-387.86	-133.94	-379.20	0.68	-0.51	
3,028.00	10.68	198.98	2,992.35	-404.76	-139.98	-395.72	0.75	-0.70	
3,123.00	10.68	206.01	3,085.71	-421.00	-146.70	-411.52	1.37	0.00	
3,217.00	9.36	204.17	3,178.27	-435.80	-153.65	-425.89	1.44	-1.40	
3,312.00	8.66	203.20	3,272.10	-449.42	-159.63	-439.13	0.75	-0.74	
3,406.00	7.38	202.76	3,365.18	-461.49	-164.76	-450.88	1.36	-1.36	
3,501.00	7.21	204.52	3,459.41	-472.54	-169.59	-461.62	0.30	-0.18	
3,596.00	7.47	204.87	3,553.63	-483.57	-174.66	-472.32	0.28	0.27	
3,691.00	8.26	205.31	3,647.74	-495.34	-180.18	-483.75	0.83	0.83	
3,786.00	8.83	198.10	3,741.69	-508.44	-185.36	-496.52	1.28	0.60	
3,880.00	8.79	212.43	3,834.59	-521.36	-191.46	-509.05	2.33	-0.04	
3,974.00	9.93	206.98	3,927.34	-534.65	-198.98	-521.87	1.53	1.21	
4,069.00	10.33	199.33	4,020.86	-549.99	-205.52	-536.79	1.48	0.42	
4,164.00	11.73	199.77	4,114.10	-567.11	-211.61	-553.52	1.48	1.47	
4,258.00	11.34	199.69	4,206.20	-584.81	-217.95	-570.81	0.42	-0.41	
4,376.00	8.48	197.14	4,322.43	-604.05	-224.43	-589.63	2.45	-2.42	
4,470.00	7.91	198.72	4,415.47	-616.80	-228.54	-602.11	0.65	-0.61	
4,565.00	9.40	194.15	4,509.39	-630.51	-232.54	-615.56	1.73	1.57	
4,660.00	10.11	197.14	4,603.01	-646.00	-236.89	-630.77	0.92	0.75	
4,754.00	9.36	195.82	4,695.66	-661.24	-241.41	-645.71	0.83	-0.80	
4,848.00	10.50	197.49	4,788.25	-676.76	-246.07	-660.93	1.25	1.21	
4,943.00	11.56	196.61	4,881.49	-694.14	-251.39	-677.96	1.13	1.12	

# Survey Report

<b>Company:</b>	Crestone Peak Resources	<b>Local Co-ordinate Reference:</b>	Well DAVIS 11-9H-G266 - Slot DAVIS 11-9H
<b>Project:</b>	DJ BASIN	<b>TVD Reference:</b>	23' KB @ 4940.00usft
<b>Site:</b>	S4-T2N-R66W	<b>MD Reference:</b>	23' KB @ 4940.00usft
<b>Well:</b>	DAVIS 11-9H-G266	<b>North Reference:</b>	True
<b>Wellbore:</b>	OH	<b>Survey Calculation Method:</b>	Minimum Curvature
<b>Design:</b>	FINAL	<b>Database:</b>	USA EDM 5000 Multi Users DB

Survey									
Measured Depth (usft)	Inclination (°)	Azimuth (°)	Vertical Depth (usft)	+N/-S (usft)	+E/-W (usft)	Vertical Section (usft)	Dogleg Rate (°/100usf)	Build Rate (°/100u)	Formations / Comments
5,038.00	12.96	209.97	4,974.34	-712.50	-259.43	-695.80	3.32	1.47	
5,132.00	11.78	207.86	5,066.16	-730.11	-269.18	-712.81	1.34	-1.26	
5,227.00	10.37	206.10	5,159.39	-746.36	-277.48	-728.54	1.53	-1.48	
5,321.00	9.19	206.72	5,252.02	-760.67	-284.58	-742.39	1.26	-1.26	
5,416.00	7.43	206.19	5,346.02	-772.96	-290.70	-754.30	1.85	-1.85	
5,510.00	7.95	210.41	5,439.18	-784.02	-296.67	-764.98	0.82	0.55	
5,604.00	7.52	212.25	5,532.32	-794.82	-303.24	-775.38	0.53	-0.46	
5,699.00	7.69	201.97	5,626.49	-805.98	-308.94	-786.17	1.44	0.18	
5,793.00	6.68	205.05	5,719.75	-816.76	-313.61	-796.66	1.15	-1.07	
5,887.00	6.20	217.09	5,813.16	-825.76	-318.98	-805.33	1.52	-0.51	
5,981.00	9.67	203.99	5,906.25	-837.03	-325.26	-816.20	4.14	3.69	
6,076.00	8.70	201.18	6,000.04	-851.02	-331.10	-829.82	1.12	-1.02	
6,171.00	9.84	210.15	6,093.80	-864.74	-337.77	-843.12	1.93	1.20	
6,265.00	8.17	208.30	6,186.64	-877.57	-344.97	-855.49	1.80	-1.78	
6,359.00	10.59	201.80	6,279.38	-891.47	-351.35	-868.99	2.81	2.57	
6,454.00	8.97	196.26	6,372.99	-906.69	-356.66	-883.87	1.97	-1.71	
6,501.00	11.69	214.19	6,419.24	-914.15	-360.37	-891.09	8.90	5.79	
6,548.00	17.58	231.94	6,464.72	-922.47	-368.64	-898.91	15.62	12.53	
6,595.00	17.27	241.87	6,509.57	-930.14	-380.39	-905.87	6.35	-0.66	
6,642.00	20.43	260.59	6,554.08	-934.77	-394.65	-909.65	14.44	6.72	
6,689.00	25.31	274.31	6,597.41	-935.36	-412.78	-909.15	15.32	10.38	
6,737.00	29.53	287.49	6,640.04	-931.03	-434.33	-903.55	15.35	8.79	
6,784.00	32.52	299.27	6,680.35	-921.36	-456.42	-892.58	14.37	6.36	
6,831.00	34.45	308.32	6,719.58	-906.93	-477.88	-876.90	11.38	4.11	
6,926.00	35.77	323.61	6,797.44	-867.84	-515.51	-835.64	9.34	1.39	
6,973.00	37.66	335.74	6,835.17	-843.66	-529.58	-810.66	15.92	4.02	
7,020.00	40.91	344.44	6,871.57	-815.71	-539.62	-782.17	13.60	6.91	
7,067.00	43.77	350.51	6,906.32	-784.83	-546.43	-750.94	10.61	6.09	
7,115.00	46.06	358.50	6,940.34	-751.15	-549.63	-717.13	12.68	4.77	
7,162.00	48.74	5.89	6,972.17	-716.63	-548.25	-682.75	12.90	5.70	
7,209.00	52.34	6.24	7,002.04	-680.55	-544.42	-646.97	7.68	7.66	
7,256.00	52.95	6.50	7,030.55	-643.43	-540.27	-610.15	1.37	1.30	
7,303.00	56.51	7.47	7,057.69	-605.35	-535.60	-572.42	7.76	7.57	
7,350.00	59.46	8.88	7,082.60	-565.91	-529.93	-533.38	6.77	6.28	
7,397.00	61.61	9.40	7,105.72	-525.51	-523.42	-493.44	4.67	4.57	
7,444.00	64.03	11.07	7,127.19	-484.37	-515.99	-452.82	6.04	5.15	
7,492.00	65.57	10.99	7,147.63	-441.74	-507.68	-410.76	3.21	3.21	
7,539.00	66.58	10.90	7,166.69	-399.56	-499.52	-369.14	2.16	2.15	
7,586.00	68.07	10.90	7,184.80	-356.98	-491.32	-327.12	3.17	3.17	
7,633.00	69.35	9.23	7,201.87	-313.86	-483.67	-284.54	4.29	2.72	
7,680.00	71.41	7.12	7,217.65	-270.04	-477.38	-241.17	6.09	4.38	
7,727.00	76.20	5.98	7,230.76	-225.22	-472.24	-196.73	10.45	10.19	
7,738.82	77.15	5.83	7,233.48	-213.78	-471.06	-185.38	8.16	8.06	TPZ - 7738.82' MD (2166 FNL, 1891 FEL)
7,775.00	80.07	5.36	7,240.63	-178.48	-467.60	-150.35	8.16	8.06	
7,822.00	82.62	5.98	7,247.70	-132.25	-463.01	-104.47	5.58	5.43	
7,869.00	84.16	6.06	7,253.11	-85.82	-458.12	-58.42	3.28	3.28	
7,963.00	85.47	7.12	7,261.60	7.17	-447.37	33.77	1.79	1.39	
8,057.00	87.67	6.77	7,267.23	100.31	-436.03	126.07	2.37	2.34	
8,152.00	88.59	6.06	7,270.33	194.66	-425.42	219.62	1.22	0.97	
8,246.00	90.66	6.50	7,270.94	288.09	-415.14	312.28	2.25	2.20	
8,341.00	90.26	6.77	7,270.18	382.45	-404.16	405.82	0.51	-0.42	
8,435.00	89.25	4.57	7,270.58	475.99	-394.88	498.63	2.58	-1.07	
8,530.00	90.00	3.07	7,271.20	570.77	-388.55	592.87	1.77	0.79	

## Survey Report

<b>Company:</b>	Crestone Peak Resources	<b>Local Co-ordinate Reference:</b>	Well DAVIS 11-9H-G266 - Slot DAVIS 11-9H
<b>Project:</b>	DJ BASIN	<b>TVD Reference:</b>	23' KB @ 4940.00usft
<b>Site:</b>	S4-T2N-R66W	<b>MD Reference:</b>	23' KB @ 4940.00usft
<b>Well:</b>	DAVIS 11-9H-G266	<b>North Reference:</b>	True
<b>Wellbore:</b>	OH	<b>Survey Calculation Method:</b>	Minimum Curvature
<b>Design:</b>	FINAL	<b>Database:</b>	USA EDM 5000 Multi Users DB

Survey									
Measured Depth (usft)	Inclination (°)	Azimuth (°)	Vertical Depth (usft)	+N/-S (usft)	+E/-W (usft)	Vertical Section (usft)	Dogleg Rate (°/100usf)	Build Rate (°/100u)	Formations / Comments
8,625.00	90.00	2.81	7,271.20	665.64	-383.67	687.29	0.27	0.00	
8,719.00	90.04	0.70	7,271.17	759.59	-380.80	780.90	2.25	0.04	
8,813.00	89.69	0.88	7,271.39	853.59	-379.50	874.65	0.42	-0.37	
8,907.00	89.52	0.88	7,272.04	947.57	-378.06	968.38	0.18	-0.18	
9,002.00	90.88	359.74	7,271.71	1,042.57	-377.54	1,063.18	1.87	1.43	
9,097.00	90.88	359.47	7,270.25	1,137.55	-378.20	1,158.03	0.28	0.00	
9,191.00	90.79	359.38	7,268.88	1,231.54	-379.14	1,251.91	0.14	-0.10	
9,286.00	90.62	359.03	7,267.71	1,326.52	-380.46	1,346.80	0.41	-0.18	
9,380.00	90.79	358.50	7,266.55	1,420.49	-382.48	1,440.73	0.59	0.18	
9,475.00	90.40	359.30	7,265.57	1,515.47	-384.31	1,535.64	0.94	-0.41	
9,570.00	90.09	0.09	7,265.16	1,610.47	-384.81	1,630.50	0.89	-0.33	
9,664.00	91.93	1.32	7,263.50	1,704.44	-383.66	1,724.24	2.35	1.96	
9,758.00	92.11	1.32	7,260.19	1,798.35	-381.49	1,817.86	0.19	0.19	
9,853.00	90.18	1.14	7,258.29	1,893.31	-379.45	1,912.53	2.04	-2.03	
9,947.00	90.18	1.76	7,258.00	1,987.28	-377.08	2,006.19	0.66	0.00	
10,041.00	89.69	1.14	7,258.10	2,081.25	-374.70	2,099.85	0.84	-0.52	
10,135.00	89.60	0.26	7,258.69	2,175.24	-373.55	2,193.60	0.94	-0.10	
10,230.00	88.77	359.74	7,260.04	2,270.23	-373.55	2,288.43	1.03	-0.87	
10,325.00	90.04	0.97	7,261.02	2,365.22	-372.96	2,383.21	1.86	1.34	
10,419.00	90.00	0.53	7,260.99	2,459.21	-371.73	2,476.96	0.47	-0.04	
10,514.00	90.26	1.23	7,260.78	2,554.20	-370.27	2,571.70	0.79	0.27	
10,608.00	90.57	0.61	7,260.09	2,648.18	-368.76	2,665.43	0.74	0.33	
10,702.00	91.10	0.35	7,258.72	2,742.17	-367.97	2,759.20	0.63	0.56	
10,797.00	91.45	359.65	7,256.61	2,837.14	-367.97	2,854.01	0.82	0.37	
10,891.00	91.85	1.05	7,253.90	2,931.10	-367.40	2,947.76	1.55	0.43	
10,986.00	90.35	2.99	7,252.08	3,026.02	-364.05	3,042.31	2.58	-1.58	
11,080.00	90.79	2.20	7,251.14	3,119.91	-359.80	3,135.79	0.96	0.47	
11,175.00	90.57	1.84	7,250.02	3,214.85	-356.45	3,230.36	0.44	-0.23	
11,269.00	90.70	1.41	7,248.98	3,308.80	-353.78	3,323.99	0.48	0.14	
11,364.00	90.53	0.70	7,247.96	3,403.78	-352.03	3,418.69	0.77	-0.18	
11,458.00	90.75	0.61	7,246.91	3,497.77	-350.96	3,512.45	0.25	0.23	
11,552.00	88.90	0.17	7,247.19	3,591.76	-350.32	3,606.24	2.02	-1.97	
11,647.00	88.81	359.91	7,249.09	3,686.74	-350.25	3,701.05	0.29	-0.09	
11,741.00	88.11	359.12	7,251.62	3,780.70	-351.05	3,794.89	1.12	-0.74	
11,835.00	89.25	358.77	7,253.78	3,874.66	-352.78	3,888.79	1.27	1.21	
11,929.00	89.82	357.80	7,254.55	3,968.62	-355.59	3,982.74	1.20	0.61	
12,023.00	89.74	359.12	7,254.91	4,062.58	-358.12	4,076.69	1.41	-0.09	
12,118.00	90.75	0.35	7,254.50	4,157.57	-358.56	4,171.54	1.68	1.06	
12,212.00	89.56	1.84	7,254.25	4,251.55	-356.76	4,265.24	2.03	-1.27	
12,306.00	89.52	1.32	7,255.00	4,345.51	-354.17	4,358.88	0.55	-0.04	
12,400.00	89.69	0.61	7,255.65	4,439.50	-352.59	4,452.61	0.78	0.18	
12,494.00	90.75	2.99	7,255.29	4,533.44	-349.63	4,546.21	2.77	1.13	
12,589.00	90.79	3.25	7,254.01	4,628.29	-344.46	4,640.59	0.28	0.04	
12,683.00	90.75	3.34	7,252.75	4,722.13	-339.06	4,733.93	0.10	-0.04	
12,778.00	91.19	0.97	7,251.14	4,817.04	-335.49	4,828.47	2.54	0.46	
12,873.00	91.45	0.88	7,248.95	4,912.00	-333.96	4,923.17	0.29	0.27	
12,967.00	91.19	0.53	7,246.79	5,005.97	-332.80	5,016.90	0.46	-0.28	
13,061.00	91.10	0.09	7,244.91	5,099.95	-332.29	5,110.69	0.48	-0.10	
13,156.00	90.48	359.74	7,243.60	5,194.94	-332.43	5,205.52	0.75	-0.65	
13,250.00	89.30	357.54	7,243.78	5,288.91	-334.66	5,299.45	2.66	-1.26	
13,345.00	88.90	358.07	7,245.27	5,383.82	-338.30	5,394.41	0.70	-0.42	
13,439.00	89.21	356.22	7,246.82	5,477.69	-342.98	5,488.39	2.00	0.33	
13,533.00	88.99	356.22	7,248.30	5,571.47	-349.18	5,582.38	0.23	-0.23	



## Survey Report

<b>Company:</b>	Crestone Peak Resources	<b>Local Co-ordinate Reference:</b>	Well DAVIS 1I-9H-G266 - Slot DAVIS 1I-9H
<b>Project:</b>	DJ BASIN	<b>TVD Reference:</b>	23' KB @ 4940.00usft
<b>Site:</b>	S4-T2N-R66W	<b>MD Reference:</b>	23' KB @ 4940.00usft
<b>Well:</b>	DAVIS 1I-9H-G266	<b>North Reference:</b>	True
<b>Wellbore:</b>	OH	<b>Survey Calculation Method:</b>	Minimum Curvature
<b>Design:</b>	FINAL	<b>Database:</b>	USA EDM 5000 Multi Users DB

Survey									
Measured Depth (usft)	Inclination (°)	Azimuth (°)	Vertical Depth (usft)	+N/-S (usft)	+E/-W (usft)	Vertical Section (usft)	Dogleg Rate (°/100usf)	Build Rate (°/100u)	Formations / Comments
13,628.00	88.68	356.13	7,250.23	5,666.24	-355.52	5,677.36	0.34	-0.33	
13,722.00	89.74	356.75	7,251.52	5,760.05	-361.35	5,771.35	1.31	1.13	
13,817.00	89.34	356.48	7,252.29	5,854.88	-366.96	5,866.34	0.51	-0.42	
13,911.00	88.81	356.13	7,253.80	5,948.67	-373.02	5,960.33	0.68	-0.56	
14,006.00	89.96	357.01	7,254.82	6,043.50	-378.70	6,055.32	1.52	1.21	
14,100.00	90.57	356.31	7,254.39	6,137.33	-384.18	6,149.32	0.99	0.65	
14,195.00	90.62	357.80	7,253.40	6,232.20	-389.06	6,244.31	1.57	0.05	
14,290.00	90.66	357.45	7,252.34	6,327.11	-392.99	6,339.29	0.37	0.04	
14,384.00	92.11	358.33	7,250.07	6,421.02	-396.45	6,433.23	1.80	1.54	
14,478.00	90.22	358.07	7,248.16	6,514.95	-399.41	6,527.17	2.03	-2.01	
14,573.00	89.56	356.66	7,248.34	6,609.84	-403.77	6,622.16	1.64	-0.69	
14,650.00	89.34	355.60	7,249.08	6,686.66	-408.97	6,699.15	1.41	-0.29	LAST SURVEY - 14650.00' MD
14,714.00	89.34	355.60	7,249.82	6,750.47	-413.88	6,763.14	0.00	0.00	PTB - 14714.00' MD (465 FNL, 1848 FEL)

Targets									
Target Name	Dip Angle (°)	Dip Dir. (°)	TVD (usft)	+N/-S (usft)	+E/-W (usft)	Northing (usft)	Easting (usft)	Latitude	Longitude
DAVIS 1I-9H-G266 TPZ - hit/miss target - Shape	0.00	0.00	7,269.00	-213.78	-392.35	1,299,719.36	3,201,454.81	40.153877	-104.779279
- actual wellpath misses target center by 85.00usft at 7753.34usft MD (7236.57 TVD, -199.65 N, -469.64 E)									
- Point									
DAVIS 1I-9H-G266 BHL - actual wellpath misses target center by 12.91usft at 14714.00usft MD (7249.82 TVD, 6750.47 N, -413.88 E)	0.00	0.00	7,251.00	6,756.37	-402.46	1,306,689.20	3,201,387.94	40.173011	-104.779315
- Point									
DAVIS 1I TGT - actual wellpath misses target center by 9.00usft at 13033.80usft MD (7245.44 TVD, 5072.76 N, -332.36 E)	0.00	0.00	7,251.00	5,072.91	-339.44	1,305,006.31	3,201,464.67	40.168390	-104.779090
- Point									
DAVIS 1I 2683' TGT - actual wellpath misses target center by 5.07usft at 10642.86usft MD (7259.69 TVD, 2683.04 N, -368.42 E)	0.00	0.00	7,260.00	2,683.00	-363.36	1,302,616.28	3,201,460.21	40.161829	-104.779175
- Point									
DAVIS 1I 4118' TGT - actual wellpath misses target center by 10.37usft at 12078.40usft MD (7254.87 TVD, 4117.97 N, -358.62 E)	0.00	0.00	7,251.00	4,118.00	-349.00	1,304,051.35	3,201,462.89	40.165768	-104.779124
- Point									

Design Annotations					
Measured Depth (usft)	Vertical Depth (usft)	Local Coordinates		Comment	
		+N/-S (usft)	+E/-W (usft)		
7,738.82	7,233.48	-213.78	-471.06	TPZ - 7738.82' MD (2166 FNL, 1891 FEL)	
14,650.00	7,249.08	6,686.66	-408.97	LAST SURVEY - 14650.00' MD	
14,714.00	7,249.82	6,750.47	-413.88	PTB - 14714.00' MD (465 FNL, 1848 FEL)	

Checked By: \_\_\_\_\_ Approved By: \_\_\_\_\_ Date: \_\_\_\_\_