



CRESTONE PEAK  
RESOURCES

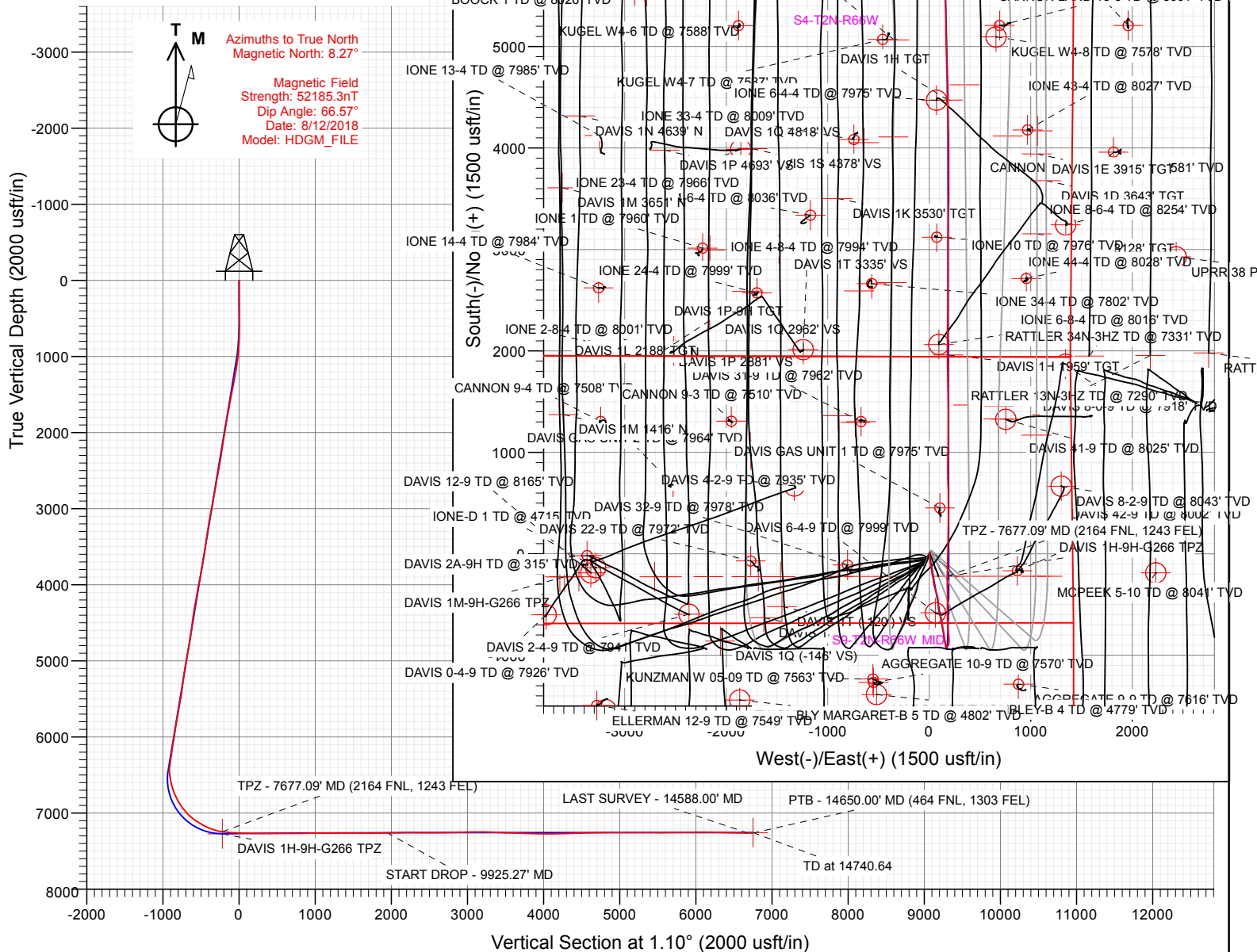
SECTION DETAILS

Sec	MD	Inc	Azi	TVD	+N/-S	+E/-W	Dleg	TFace	VSect	Target
1	0.00	0.00	0.00	0.00	0.00	0.00	0.00	0.00	0.00	
2	600.00	0.00	0.00	600.00	0.00	0.00	0.00	0.00	0.00	
3	1080.75	9.61	169.87	1078.49	-39.62	7.08	2.00	169.87	-39.47	
4	6517.02	9.61	169.87	6438.40	-933.46	166.75	0.00	0.00	-930.09	
5	7765.59	90.42	359.91	7272.00	-221.73	190.43	8.00	-169.81	-218.04	DAVIS 1H-9H-G266 TPZ
6	7765.79	90.42	359.91	7272.00	-221.53	190.43	2.00	52.58	-217.84	
7	9925.27	90.42	359.91	7256.08	1937.88	187.16	0.00	0.00	1941.11	DAVIS 1H 1959' TGT
8	9946.39	90.00	359.91	7256.00	1959.00	187.13	2.00	-180.00	1962.23	DAVIS 1H TGT
9	12460.29	90.00	359.91	7256.00	4472.90	183.32	0.00	0.00	4475.60	
10	12524.31	90.00	358.63	7256.00	4536.91	182.51	2.00	-90.00	4539.58	
11	14740.64	90.00	358.63	7256.00	6752.62	129.63	0.00	0.00	6753.86	DAVIS 1H-9H-G266 BHL

FINAL  
DAVIS 1H-9H-G266  
380137 185145 408637 185246  
23 KB @ 4940.00usft  
Ground Level @ 4917.00  
North American Datum 1983  
Well DAVIS 1H-9H-G266 - Slot DAVIS 1H-9H, True North

Type	Target	No Target (Freehand)	Azimuth	Origin Type	N/S	E/W	From TVD
Name	TVD	+N/-S	+E/-W	Latitude	Longitude		
DAVIS 1H 1959' TGT	7256.00	1959.00	187.13	40.159855	-104.777188		
DAVIS 1H TGT	7256.00	4472.90	183.32	40.159766	-104.777201		
DAVIS 1H-9H-G266 BHL	7256.00	6752.62	129.63	40.173024	-104.777394		
DAVIS 1H-9H-G266 TPZ	7272.00	-221.73	190.43	40.153879	-104.777176		

Project: DJ BASIN  
Site: S4-T2N-R66W  
Well: DAVIS 1H-9H-G266  
Wellbore: OH  
Design: FINAL



WELL DETAILS: DAVIS 1H-9H-G266

4917.00  
+N/-S 0.00 +E/-W 0.00 Northing 1299945.05 Easting 3201850.30 Latitude 40.154488 Longitude -104.777857 DAVIS 1H-9H

CATHEDRAL





**CRESTONE PEAK**  
RESOURCES

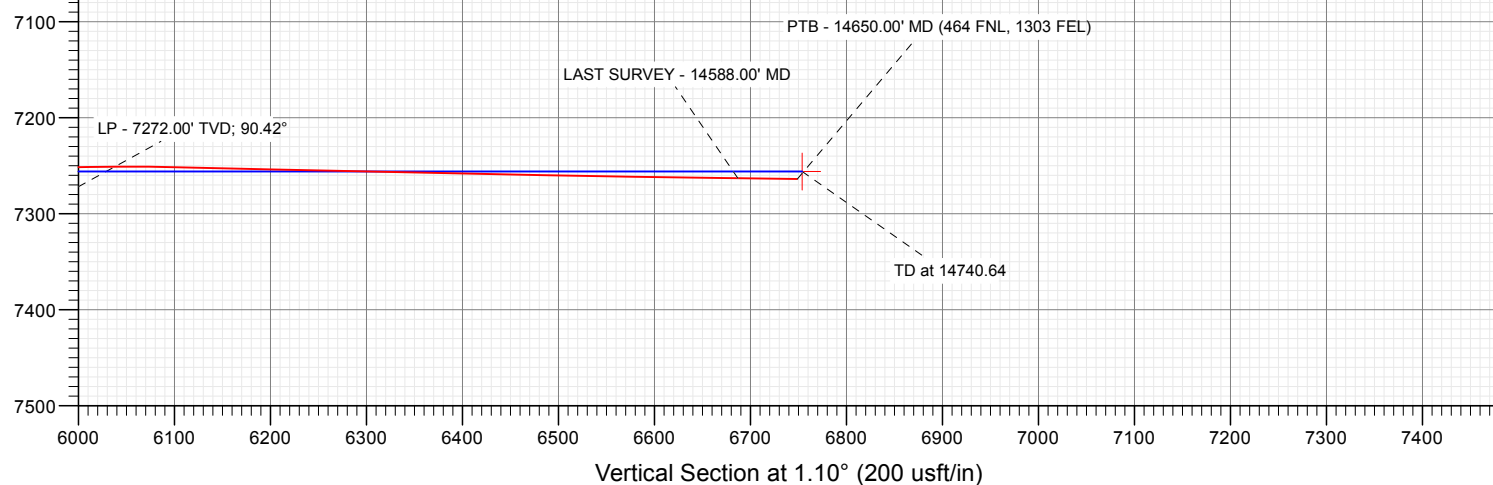
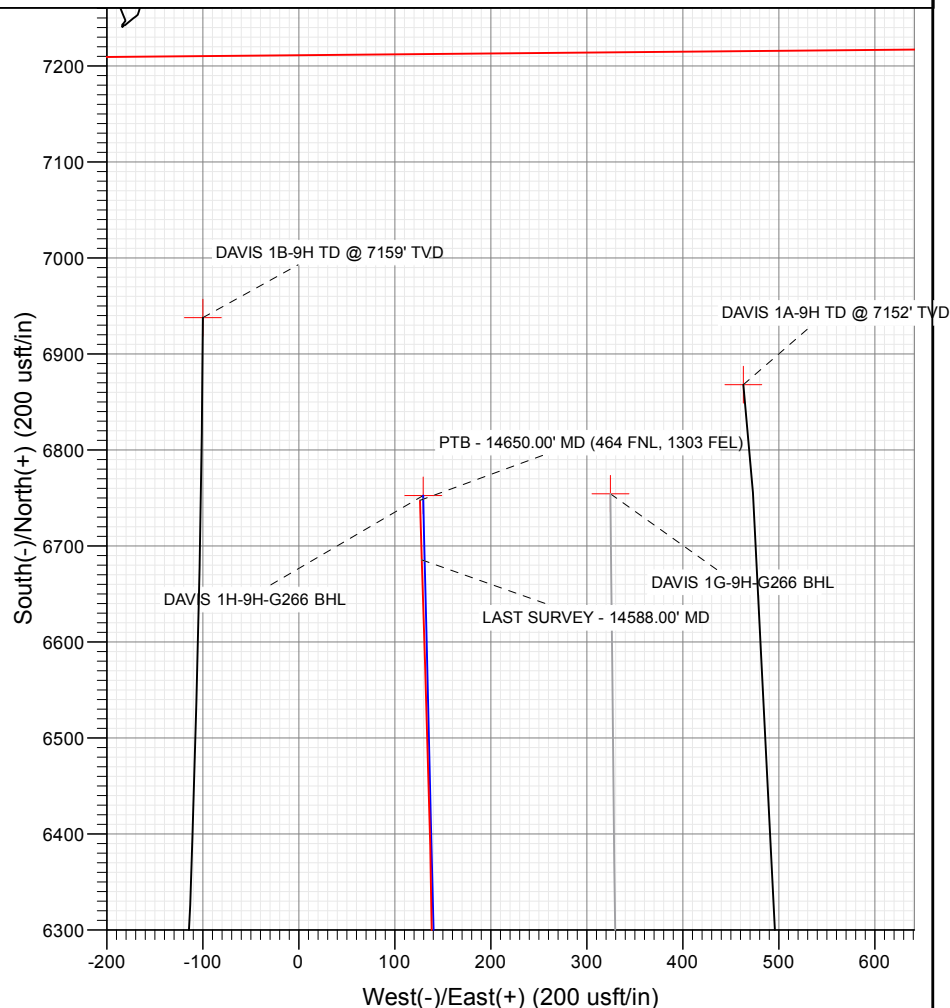
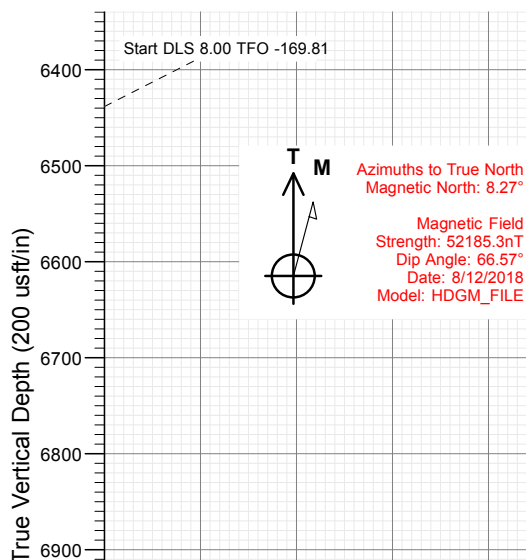
# SECTION DETAILS

Sec	MD	Inc	Azi	TVD	+N/-S	+E/-W	Dleg	TFace	Vsect	Target
1	0.00	0.00	0.00	0.00	0.00	0.00	0.00	0.00	0.00	
2	600.00	0.00	0.00	600.00	0.00	0.00	0.00	0.00	0.00	
3	1080.75	9.61	169.87	1078.49	-39.62	7.08	2.00	169.87	-39.47	
4	6517.02	9.61	169.87	6438.40	-933.46	166.75	0.00	0.00	-930.09	
5	7765.59	90.42	359.91	7272.00	-221.73	190.43	8.00	-169.81	-218.04	DAVIS 1H-9H-G266 TPZ
6	7765.79	90.42	359.91	7272.00	-221.53	190.43	2.00	52.58	-217.84	
7	9925.27	90.42	359.91	7256.08	1937.88	187.16	0.00	0.00	1941.11	
8	9946.39	90.00	359.91	7256.00	1959.00	187.13	2.00	-180.00	1962.23	DAVIS 1H 1959' TGT
9	12460.29	90.00	359.91	7256.00	4472.90	183.32	0.00	0.00	4475.60	DAVIS 1H TGT
10	12524.31	90.00	358.63	7256.00	4536.91	182.51	2.00	-90.00	4539.58	
11	14740.64	90.00	358.63	7256.00	6752.62	129.63	0.00	0.00	6753.86	DAVIS 1H-9H-G266 BHL

FINAL  
DAVIS 1H-9H-G266  
380137 185145 408637 185246  
23 KB @ 4940.00usft  
Ground Level @ 4917.00  
North American Datum 1983  
Well DAVIS 1H-9H-G266 - Slot DAVIS 1H-9H, True North

Type	Target	No Target (Freehand)	Azimuth	Origin Type	N/S	E/W	From TVD
Name	TVD	+N/-S	+E/-W	Latitude	Longitude		
DAVIS 1H 1959' TGT	7256.00	1959.00	187.13	40.159865	-104.777188		
DAVIS 1H TGT	7256.00	4472.90	183.32	40.166766	-104.777231		
DAVIS 1H-9H-G266 BHL	7256.00	6752.62	129.63	40.173024	-104.777394		
DAVIS 1H-9H-G266 TPZ	7272.00	-221.73	190.43	40.153879	-104.777176		

Project: DJ BASIN  
Site: S4-T2N-R66W  
Well: DAVIS 1H-9H-G266  
Wellbore: OH  
Design: FINAL



## WELL DETAILS: DAVIS 1H-9H-G266

4917.00  
+N/-S 0.00 +E/-W 0.00 Northing 1299945.05 Easting 3201850.30 Latitude 40.154488 Longitude -104.777857 DAVIS 1H-9H

**CATHEDRAL**



## Survey Report

<b>Company:</b>	Crestone Peak Resources	<b>Local Co-ordinate Reference:</b>	Well DAVIS 1H-9H-G266 - Slot DAVIS 1H-9H
<b>Project:</b>	DJ BASIN	<b>TVD Reference:</b>	23' KB @ 4940.00usft
<b>Site:</b>	S4-T2N-R66W	<b>MD Reference:</b>	23' KB @ 4940.00usft
<b>Well:</b>	DAVIS 1H-9H-G266	<b>North Reference:</b>	True
<b>Wellbore:</b>	OH	<b>Survey Calculation Method:</b>	Minimum Curvature
<b>Design:</b>	FINAL	<b>Database:</b>	USA EDM 5000 Multi Users DB

<b>Project</b>	DJ BASIN		
<b>Map System:</b>	US State Plane 1983	<b>System Datum:</b>	Mean Sea Level
<b>Geo Datum:</b>	North American Datum 1983		
<b>Map Zone:</b>	Colorado Northern Zone		

Site		S4-T2N-R66W			
Site Position:		Northing:	1,300,048.95 usft	Latitude:	40.154783
From:	Map	Easting:	3,201,389.75 usft	Longitude:	-104.779502
Position Uncertainty:	0.00 usft	Slot Radius:	13-3/16 "	Grid Convergence:	0.47 °

Well	DAVIS 1H-9H-G266 - Slot DAVIS 1H-9H					
Well Position	+N/-S	0.00 usft	Northing:	1,299,945.05 usft	Latitude:	40.154488
	+E/-W	0.00 usft	Easting:	3,201,850.30 usft	Longitude:	-104.777857
Position Uncertainty		0.00 usft	Wellhead Elevation:	usft	Ground Level:	4,917.00 usft

<b>Wellbore</b>	OH				
<b>Magnetics</b>	<b>Model Name</b>	<b>Sample Date</b>	<b>Declination (°)</b>	<b>Dip Angle (°)</b>	<b>Field Strength (nT)</b>
	HDGM_FILE	8/12/2018	8.27	66.57	52,185.30000000

<b>Design</b>	FINAL				
<b>Audit Notes:</b>					
<b>Version:</b>	1.0	<b>Phase:</b>	ACTUAL	<b>Tie On Depth:</b>	0.00
<b>Vertical Section:</b>	<b>Depth From (TVD) (usft)</b>	<b>+N/-S (usft)</b>	<b>+E/-W (usft)</b>	<b>Direction (°)</b>	
	0.00	0.00	0.00	1.10	

<b>Survey Program</b>	<b>Date</b>	8/17/2018			
<b>From (usft)</b>	<b>To (usft)</b>	<b>Survey (Wellbore)</b>	<b>Tool Name</b>	<b>Description</b>	
106.00	2,097.00	Survey #1 (OH)	VESSI_GYROFLEX	VESSI Gyroflex Gyro	
2,241.00	14,650.00	Survey #2 (OH)	MWD+HDGM	OWSG MWD + HDGM	

<b>Survey</b>									
<b>Measured Depth (usft)</b>	<b>Inclination (°)</b>	<b>Azimuth (°)</b>	<b>Vertical Depth (usft)</b>	<b>+N/-S (usft)</b>	<b>+E/-W (usft)</b>	<b>Vertical Section (usft)</b>	<b>Dogleg Rate (°/100usf)</b>	<b>Build Rate (°/100u)</b>	<b>Formations / Comments</b>
0.00	0.00	0.00	0.00	0.00	0.00	0.00	0.00	0.00	
106.00	0.59	24.09	106.00	0.50	0.22	0.50	0.56	0.56	
138.00	0.75	24.09	138.00	0.84	0.38	0.85	0.50	0.50	
170.00	0.75	8.62	169.99	1.24	0.49	1.25	0.63	0.00	
201.00	0.62	11.26	200.99	1.60	0.56	1.61	0.43	-0.42	
233.00	0.46	2.55	232.99	1.90	0.60	1.91	0.56	-0.50	
327.00	0.73	334.06	326.98	2.82	0.35	2.82	0.42	0.29	
422.00	0.78	331.86	421.98	3.93	-0.22	3.93	0.06	0.05	
517.00	0.81	333.00	516.97	5.10	-0.83	5.08	0.04	0.03	
548.00	0.89	334.32	547.96	5.51	-1.03	5.49	0.27	0.26	
580.00	0.70	331.77	579.96	5.91	-1.23	5.88	0.60	-0.59	
611.00	0.13	301.17	610.96	6.09	-1.35	6.07	1.91	-1.84	

## Survey Report

<b>Company:</b>	Crestone Peak Resources	<b>Local Co-ordinate Reference:</b>	Well DAVIS 1H-9H-G266 - Slot DAVIS 1H-9H
<b>Project:</b>	DJ BASIN	<b>TVD Reference:</b>	23' KB @ 4940.00usft
<b>Site:</b>	S4-T2N-R66W	<b>MD Reference:</b>	23' KB @ 4940.00usft
<b>Well:</b>	DAVIS 1H-9H-G266	<b>North Reference:</b>	True
<b>Wellbore:</b>	OH	<b>Survey Calculation Method:</b>	Minimum Curvature
<b>Design:</b>	FINAL	<b>Database:</b>	USA EDM 5000 Multi Users DB

Survey									
Measured Depth (usft)	Inclination (°)	Azimuth (°)	Vertical Depth (usft)	+N/-S (usft)	+E/-W (usft)	Vertical Section (usft)	Dogleg Rate (°/100usf)	Build Rate (°/100u)	Formations / Comments
705.00	1.40	177.01	704.95	5.00	-1.38	4.97	1.57	1.35	
800.00	2.77	173.67	799.89	1.56	-1.07	1.54	1.45	1.44	
894.00	4.30	170.94	893.70	-4.18	-0.27	-4.18	1.64	1.63	
962.00	5.70	173.09	961.44	-10.05	0.54	-10.03	2.08	2.06	
1,057.00	7.50	174.05	1,055.81	-20.90	1.75	-20.86	1.90	1.89	
1,151.00	10.07	173.00	1,148.70	-35.16	3.39	-35.09	2.74	2.73	
1,245.00	9.91	174.65	1,241.27	-51.37	5.15	-51.26	0.35	-0.17	
1,340.00	10.38	170.52	1,334.79	-67.95	7.32	-67.80	0.91	0.49	
1,435.00	10.76	170.58	1,428.18	-85.14	10.18	-84.93	0.40	0.40	
1,530.00	10.69	173.14	1,521.52	-102.64	12.68	-102.37	0.51	-0.07	
1,624.00	11.46	170.12	1,613.77	-120.49	15.33	-120.18	1.03	0.82	
1,718.00	10.63	170.48	1,706.03	-138.24	18.36	-137.87	0.89	-0.88	
1,813.00	10.58	168.91	1,799.40	-155.44	21.49	-155.00	0.31	-0.05	
1,908.00	9.91	168.94	1,892.89	-172.02	24.74	-171.52	0.71	-0.71	
2,002.00	9.35	169.60	1,985.56	-187.47	27.67	-186.91	0.61	-0.60	
2,097.00	8.96	171.93	2,079.35	-202.39	30.10	-201.77	0.57	-0.41	
2,241.00	8.44	169.54	2,221.70	-223.88	33.59	-223.20	0.44	-0.36	
2,273.00	8.17	169.54	2,253.36	-228.43	34.43	-227.73	0.84	-0.84	
2,367.00	9.89	166.73	2,346.19	-242.86	37.49	-242.09	1.89	1.83	
2,462.00	10.72	172.79	2,439.66	-259.56	40.48	-258.74	1.44	0.87	
2,556.00	9.84	172.09	2,532.15	-276.19	42.68	-275.32	0.95	-0.94	
2,651.00	10.68	172.88	2,625.63	-292.97	44.89	-292.05	0.90	0.88	
2,745.00	10.59	166.90	2,718.02	-310.02	47.92	-309.05	1.18	-0.10	
2,840.00	10.24	166.46	2,811.46	-326.74	51.88	-325.68	0.38	-0.37	
2,934.00	10.20	161.98	2,903.97	-342.77	56.41	-341.63	0.85	-0.04	
3,029.00	11.56	162.95	2,997.26	-359.87	61.80	-358.62	1.44	1.43	
3,123.00	11.03	163.04	3,089.44	-377.48	67.19	-376.12	0.56	-0.56	
3,217.00	10.28	163.39	3,181.81	-394.12	72.21	-392.66	0.80	-0.80	
3,312.00	9.58	162.60	3,275.39	-409.79	77.00	-408.23	0.75	-0.74	
3,407.00	8.83	162.42	3,369.17	-424.28	81.56	-422.64	0.79	-0.79	
3,501.00	8.09	173.06	3,462.15	-437.72	84.54	-436.02	1.84	-0.79	
3,596.00	8.70	174.81	3,556.13	-451.52	86.00	-449.78	0.70	0.64	
3,690.00	9.32	175.08	3,648.97	-466.18	87.30	-464.42	0.66	0.66	
3,785.00	10.37	181.14	3,742.57	-482.39	87.79	-480.62	1.55	1.11	
3,879.00	10.90	180.44	3,834.96	-499.74	87.55	-497.97	0.58	0.56	
3,974.00	11.03	172.88	3,928.23	-517.74	88.61	-515.94	1.52	0.14	
4,069.00	9.62	173.14	4,021.69	-534.64	90.68	-532.80	1.49	-1.48	
4,163.00	11.07	176.75	4,114.16	-551.45	92.13	-549.58	1.69	1.54	
4,258.00	10.81	170.51	4,207.43	-569.34	94.12	-567.43	1.28	-0.27	
4,375.00	9.58	160.05	4,322.60	-589.32	99.25	-587.30	1.90	-1.05	
4,470.00	8.09	157.59	4,416.47	-602.93	104.49	-600.81	1.62	-1.57	
4,564.00	7.43	150.47	4,509.61	-614.33	110.01	-612.11	1.24	-0.70	
4,659.00	8.22	165.32	4,603.73	-626.25	114.76	-623.93	2.28	0.83	
4,754.00	9.76	167.78	4,697.56	-640.69	118.19	-638.30	1.67	1.62	
4,848.00	10.20	169.80	4,790.14	-656.67	121.35	-654.22	0.60	0.47	
4,942.00	10.81	169.01	4,882.56	-673.51	124.50	-671.00	0.67	0.65	
5,037.00	10.33	168.84	4,975.95	-690.61	127.85	-688.03	0.51	-0.51	
5,131.00	9.84	172.44	5,068.50	-706.84	130.54	-704.21	0.85	-0.52	
5,226.00	9.05	171.91	5,162.21	-722.29	132.66	-719.61	0.84	-0.83	
5,320.00	7.91	171.21	5,255.18	-736.00	134.68	-733.28	1.22	-1.21	
5,415.00	6.90	172.62	5,349.39	-748.12	136.42	-745.36	1.08	-1.06	
5,509.00	7.65	170.95	5,442.63	-759.90	138.13	-757.11	0.83	0.80	
5,605.00	11.29	166.29	5,537.31	-775.34	141.36	-772.49	3.87	3.79	

# Survey Report

<b>Company:</b>	Crestone Peak Resources	<b>Local Co-ordinate Reference:</b>	Well DAVIS 1H-9H-G266 - Slot DAVIS 1H-9H
<b>Project:</b>	DJ BASIN	<b>TVD Reference:</b>	23' KB @ 4940.00usft
<b>Site:</b>	S4-T2N-R66W	<b>MD Reference:</b>	23' KB @ 4940.00usft
<b>Well:</b>	DAVIS 1H-9H-G266	<b>North Reference:</b>	True
<b>Wellbore:</b>	OH	<b>Survey Calculation Method:</b>	Minimum Curvature
<b>Design:</b>	FINAL	<b>Database:</b>	USA EDM 5000 Multi Users DB

Survey									
Measured Depth (usft)	Inclination (°)	Azimuth (°)	Vertical Depth (usft)	+N/-S (usft)	+E/-W (usft)	Vertical Section (usft)	Dogleg Rate (°/100usf)	Build Rate (°/100u)	Formations / Comments
5,699.00	10.77	176.13	5,629.58	-793.05	144.13	-790.13	2.07	-0.55	
5,794.00	10.72	172.97	5,722.91	-810.67	145.81	-807.72	0.62	-0.05	
5,888.00	10.15	169.10	5,815.36	-827.48	148.45	-824.48	0.96	-0.61	
5,982.00	9.32	176.66	5,908.01	-843.22	150.46	-840.17	1.62	-0.88	
6,077.00	6.37	172.88	6,002.11	-856.13	151.56	-853.06	3.15	-3.11	
6,172.00	9.10	166.64	6,096.24	-868.67	153.95	-865.55	3.00	2.87	
6,266.00	9.49	168.31	6,189.01	-883.49	157.24	-880.31	0.50	0.41	
6,361.00	10.02	168.84	6,282.63	-899.27	160.43	-896.02	0.57	0.56	
6,455.00	8.04	164.00	6,375.46	-913.61	163.82	-910.30	2.25	-2.11	
6,502.00	5.58	112.59	6,422.17	-917.65	166.84	-914.28	13.40	-5.23	
6,549.00	8.00	68.73	6,468.86	-917.34	172.00	-913.87	11.78	5.15	
6,596.00	12.57	53.26	6,515.11	-913.09	179.15	-909.49	11.28	9.72	
6,643.00	14.02	35.24	6,560.86	-905.38	186.54	-901.63	9.30	3.09	
6,690.00	14.59	12.57	6,606.44	-894.95	191.12	-891.11	11.90	1.21	
6,738.00	16.35	4.13	6,652.71	-882.30	192.92	-878.44	5.94	3.67	
6,785.00	18.41	7.56	6,697.56	-868.35	194.37	-864.46	4.89	4.38	
6,833.00	21.36	358.50	6,742.70	-852.09	195.14	-848.18	8.87	6.15	
6,880.00	24.87	353.41	6,785.93	-833.71	193.78	-829.83	8.59	7.47	
6,927.00	28.61	354.46	6,827.90	-812.68	191.56	-808.85	8.02	7.96	
6,974.00	31.90	354.99	6,868.49	-789.10	189.39	-785.32	7.02	7.00	
7,022.00	34.32	353.41	6,908.69	-763.02	186.73	-759.30	5.35	5.04	
7,069.00	38.06	354.55	6,946.62	-735.43	183.83	-731.76	8.09	7.96	
7,116.00	41.84	357.54	6,982.64	-705.33	181.78	-701.71	9.02	8.04	
7,163.00	46.01	359.30	7,016.49	-672.75	180.90	-669.15	9.24	8.87	
7,210.00	48.82	358.07	7,048.29	-638.16	180.10	-634.58	6.28	5.98	
7,257.00	52.25	358.42	7,078.16	-601.89	178.99	-598.35	7.32	7.30	
7,304.00	55.81	359.03	7,105.76	-563.87	178.15	-560.35	7.65	7.57	
7,351.00	58.80	359.91	7,131.15	-524.33	177.79	-520.82	6.55	6.36	
7,399.00	60.73	2.11	7,155.32	-482.87	178.53	-479.35	5.64	4.02	
7,446.00	63.85	0.97	7,177.17	-441.28	179.64	-437.75	6.98	6.64	
7,493.00	66.62	359.65	7,196.86	-398.61	179.86	-395.08	6.42	5.89	
7,540.00	70.80	358.68	7,213.92	-354.83	179.22	-351.32	9.10	8.89	
7,587.00	75.10	358.07	7,227.70	-309.92	177.94	-306.45	9.23	9.15	
7,634.00	78.57	358.94	7,238.40	-264.18	176.75	-260.74	7.60	7.38	
7,677.09	81.76	1.04	7,245.76	-221.73	176.75	-218.30	8.83	7.40	TPZ - 7677.09' MD (2164 FNL, 1243 FEL)
7,681.00	82.05	1.23	7,246.31	-217.86	176.83	-214.43	8.83	7.42	
7,728.00	84.29	2.11	7,251.90	-171.22	178.19	-167.77	5.12	4.77	
7,776.00	85.78	1.84	7,256.06	-123.43	179.83	-119.96	3.15	3.10	
7,870.00	87.94	1.14	7,261.20	-29.61	182.27	-26.10	2.42	2.30	
7,964.00	88.20	1.41	7,264.37	64.31	184.36	67.84	0.40	0.28	
8,059.00	89.60	1.14	7,266.19	159.27	186.48	162.82	1.50	1.47	
8,153.00	88.77	1.23	7,267.53	253.24	188.42	256.81	0.89	-0.88	
8,247.00	89.69	0.70	7,268.79	347.22	190.00	350.80	1.13	0.98	
8,342.00	89.56	0.00	7,269.42	442.21	190.58	445.79	0.75	-0.14	
8,435.00	90.57	359.03	7,269.31	535.21	189.80	538.75	1.51	1.09	
8,530.00	90.75	357.71	7,268.22	630.16	187.10	633.64	1.40	0.19	
8,625.00	89.47	358.42	7,268.03	725.10	183.89	728.50	1.54	-1.35	
8,719.00	91.67	358.94	7,267.10	819.07	181.72	822.41	2.40	2.34	
8,813.00	91.58	0.35	7,264.43	913.03	181.14	916.33	1.50	-0.10	
8,907.00	90.18	1.76	7,262.99	1,006.99	182.87	1,010.32	2.11	-1.49	
9,002.00	89.87	2.46	7,262.95	1,101.93	186.37	1,105.30	0.81	-0.33	
9,097.00	89.65	0.53	7,263.35	1,196.89	188.85	1,200.30	2.04	-0.23	
9,191.00	91.89	0.53	7,262.08	1,290.87	189.72	1,294.28	2.38	2.38	

# Survey Report

<b>Company:</b>	Crestone Peak Resources	<b>Local Co-ordinate Reference:</b>	Well DAVIS 1H-9H-G266 - Slot DAVIS 1H-9H
<b>Project:</b>	DJ BASIN	<b>TVD Reference:</b>	23' KB @ 4940.00usft
<b>Site:</b>	S4-T2N-R66W	<b>MD Reference:</b>	23' KB @ 4940.00usft
<b>Well:</b>	DAVIS 1H-9H-G266	<b>North Reference:</b>	True
<b>Wellbore:</b>	OH	<b>Survey Calculation Method:</b>	Minimum Curvature
<b>Design:</b>	FINAL	<b>Database:</b>	USA EDM 5000 Multi Users DB

Survey									
Measured Depth (usft)	Inclination (°)	Azimuth (°)	Vertical Depth (usft)	+N/-S (usft)	+E/-W (usft)	Vertical Section (usft)	Dogleg Rate (°/100usf)	Build Rate (°/100u)	Formations / Comments
9,286.00	89.25	358.68	7,261.14	1,385.85	189.06	1,389.23	3.39	-2.78	
9,380.00	88.99	358.50	7,262.58	1,479.81	186.75	1,483.13	0.34	-0.28	
9,475.00	89.47	358.50	7,263.86	1,574.77	184.26	1,578.02	0.51	0.51	
9,569.00	90.09	359.47	7,264.22	1,668.75	182.60	1,671.95	1.22	0.66	
9,664.00	90.62	359.65	7,263.63	1,763.75	181.87	1,766.92	0.59	0.56	
9,758.00	90.79	358.86	7,262.47	1,857.73	180.65	1,860.86	0.86	0.18	
9,852.00	90.84	359.56	7,261.14	1,951.71	179.35	1,954.80	0.75	0.05	
9,946.00	90.97	0.44	7,259.65	2,045.70	179.35	2,048.77	0.95	0.14	
10,041.00	91.80	0.53	7,257.36	2,140.67	180.15	2,143.73	0.88	0.87	
10,135.00	90.40	0.09	7,255.55	2,234.65	180.66	2,237.71	1.56	-1.49	
10,230.00	88.42	0.70	7,256.53	2,329.64	181.32	2,332.69	2.18	-2.08	
10,325.00	89.21	0.44	7,258.49	2,424.61	182.26	2,427.66	0.88	0.83	
10,419.00	90.66	0.79	7,258.60	2,518.60	183.27	2,521.66	1.59	1.54	
10,514.00	90.53	0.79	7,257.61	2,613.59	184.58	2,616.65	0.14	-0.14	
10,608.00	90.70	0.09	7,256.60	2,707.58	185.30	2,710.64	0.77	0.18	
10,702.00	91.14	359.91	7,255.10	2,801.57	185.30	2,804.61	0.51	0.47	
10,797.00	91.14	359.56	7,253.21	2,896.55	184.86	2,899.56	0.37	0.00	
10,891.00	91.49	359.30	7,251.05	2,990.52	183.93	2,993.50	0.46	0.37	
10,986.00	90.22	0.70	7,249.63	3,085.50	183.93	3,088.47	1.99	-1.34	
11,080.00	90.48	1.23	7,249.06	3,179.49	185.51	3,182.46	0.63	0.28	
11,175.00	88.07	1.41	7,250.26	3,274.45	187.70	3,277.45	2.54	-2.54	
11,269.00	87.76	0.88	7,253.68	3,368.37	189.58	3,371.38	0.65	-0.33	
11,363.00	87.80	0.09	7,257.32	3,462.29	190.37	3,465.31	0.84	0.04	
11,458.00	87.28	359.82	7,261.40	3,557.20	190.30	3,560.20	0.62	-0.55	
11,552.00	88.37	0.26	7,264.96	3,651.13	190.36	3,654.12	1.25	1.16	
11,647.00	88.46	359.56	7,267.59	3,746.10	190.21	3,749.06	0.74	0.09	
11,741.00	88.20	0.35	7,270.33	3,840.06	190.14	3,843.00	0.88	-0.28	
11,835.00	89.25	359.74	7,272.42	3,934.03	190.21	3,936.96	1.29	1.12	
11,929.00	89.96	0.26	7,273.07	4,028.03	190.21	4,030.94	0.94	0.76	
12,023.00	91.10	358.94	7,272.20	4,122.02	189.56	4,124.90	1.86	1.21	
12,117.00	91.19	358.77	7,270.32	4,215.98	187.68	4,218.81	0.20	0.10	
12,212.00	91.27	358.33	7,268.28	4,310.93	185.28	4,313.69	0.47	0.08	
12,306.00	91.89	357.63	7,265.69	4,404.83	181.96	4,407.51	0.99	0.66	
12,400.00	92.20	357.45	7,262.34	4,498.69	177.93	4,501.27	0.38	0.33	
12,494.00	91.49	359.56	7,259.31	4,592.60	175.48	4,595.12	2.37	-0.76	
12,589.00	90.18	359.30	7,257.93	4,687.58	174.54	4,690.07	1.41	-1.38	
12,683.00	90.53	358.94	7,257.34	4,781.57	173.09	4,784.01	0.53	0.37	
12,778.00	90.92	358.15	7,256.14	4,876.53	170.68	4,878.91	0.93	0.41	
12,872.00	90.40	358.42	7,255.06	4,970.48	167.87	4,972.79	0.62	-0.55	
12,967.00	89.60	359.12	7,255.06	5,065.46	165.83	5,067.71	1.12	-0.84	
13,061.00	90.57	359.03	7,254.92	5,159.44	164.31	5,161.65	1.04	1.03	
13,156.00	89.91	359.91	7,254.52	5,254.44	163.43	5,256.61	1.16	-0.69	
13,250.00	89.56	358.59	7,254.96	5,348.43	162.20	5,350.56	1.45	-0.37	
13,345.00	89.87	358.50	7,255.43	5,443.39	159.79	5,445.46	0.34	0.33	
13,439.00	89.43	357.54	7,256.00	5,537.34	156.54	5,539.32	1.12	-0.47	
13,533.00	90.79	358.24	7,255.82	5,631.27	153.08	5,633.17	1.63	1.45	
13,628.00	91.23	358.42	7,254.15	5,726.21	150.31	5,728.04	0.50	0.46	
13,722.00	90.00	356.48	7,253.14	5,820.11	146.13	5,821.84	2.44	-1.31	
13,817.00	90.66	357.98	7,252.59	5,914.99	141.54	5,916.62	1.72	0.69	
13,911.00	90.88	359.91	7,251.33	6,008.96	139.81	6,010.54	2.07	0.23	
14,005.00	88.64	359.91	7,251.72	6,102.96	139.66	6,104.51	2.38	-2.38	
14,100.00	88.77	359.74	7,253.87	6,197.93	139.37	6,199.47	0.23	0.14	
14,195.00	88.81	359.30	7,255.88	6,292.91	138.58	6,294.41	0.46	0.04	



## Survey Report

<b>Company:</b>	Crestone Peak Resources	<b>Local Co-ordinate Reference:</b>	Well DAVIS 1H-9H-G266 - Slot DAVIS 1H-9H
<b>Project:</b>	DJ BASIN	<b>TVD Reference:</b>	23' KB @ 4940.00usft
<b>Site:</b>	S4-T2N-R66W	<b>MD Reference:</b>	23' KB @ 4940.00usft
<b>Well:</b>	DAVIS 1H-9H-G266	<b>North Reference:</b>	True
<b>Wellbore:</b>	OH	<b>Survey Calculation Method:</b>	Minimum Curvature
<b>Design:</b>	FINAL	<b>Database:</b>	USA EDM 5000 Multi Users DB

Survey									
Measured Depth (usft)	Inclination (°)	Azimuth (°)	Vertical Depth (usft)	+N/-S (usft)	+E/-W (usft)	Vertical Section (usft)	Dogleg Rate (°/100usf)	Build Rate (°/100u)	Formations / Comments
14,290.00	88.64	358.59	7,257.99	6,387.87	136.83	6,389.32	0.77	-0.18	
14,384.00	88.99	358.42	7,259.93	6,481.82	134.38	6,483.20	0.41	0.37	
14,478.00	89.08	358.33	7,261.52	6,575.76	131.71	6,577.08	0.14	0.10	
14,573.00	89.34	357.98	7,262.83	6,670.71	128.65	6,671.95	0.46	0.27	
14,588.00	89.25	358.33	7,263.01	6,685.70	128.17	6,686.93	2.41	-0.60	LAST SURVEY - 14588.00' MD
14,650.00	89.25	358.33	7,263.82	6,747.66	126.36	6,748.85	0.00	0.00	PTB - 14650.00' MD (464 FNL, 1303 FEL)

Targets									
Target Name - hit/miss target - Shape	Dip Angle (°)	Dip Dir. (°)	TVD (usft)	+N/-S (usft)	+E/-W (usft)	Northing (usft)	Easting (usft)	Latitude	Longitude
DAVIS 1H-9H-G266 TPZ - actual wellpath misses target center by 29.33usft at 7681.00usft MD (7246.31 TVD, -217.86 N, 176.83 E) - Point	0.00	0.00	7,272.00	-221.73	190.43	1,299,724.88	3,202,042.53	40.153879	-104.777176
DAVIS 1H 1959' TGT - actual wellpath misses target center by 9.31usft at 9859.37usft MD (7261.03 TVD, 1959.08 N, 179.30 E) - Point	0.00	0.00	7,256.00	1,959.00	187.13	1,301,905.51	3,202,021.47	40.159865	-104.777188
DAVIS 1H TGT - actual wellpath misses target center by 8.46usft at 12374.25usft MD (7263.31 TVD, 4472.98 N, 179.07 E) - Point	0.00	0.00	7,256.00	4,472.90	183.32	1,304,419.30	3,201,997.19	40.166766	-104.777201
DAVIS 1H-9H-G266 BHI - actual wellpath misses target center by 9.82usft at 14650.00usft MD (7263.82 TVD, 6747.66 N, 126.36 E) - Point	0.00	0.00	7,256.00	6,752.62	129.63	1,306,698.50	3,201,924.93	40.173024	-104.777394

Design Annotations					
Measured Depth (usft)	Vertical Depth (usft)	Local Coordinates			
		+N/-S (usft)	+E/-W (usft)	Comment	
7,677.09	7,245.76	-221.73	176.75	TPZ - 7677.09' MD (2164 FNL, 1243 FEL)	
14,588.00	7,263.01	6,685.70	128.17	LAST SURVEY - 14588.00' MD	
14,650.00	7,263.82	6,747.66	126.36	PTB - 14650.00' MD (464 FNL, 1303 FEL)	

Checked By: _____	Approved By: _____	Date: _____
-------------------	--------------------	-------------