



CRESTONE PEAK
RESOURCES

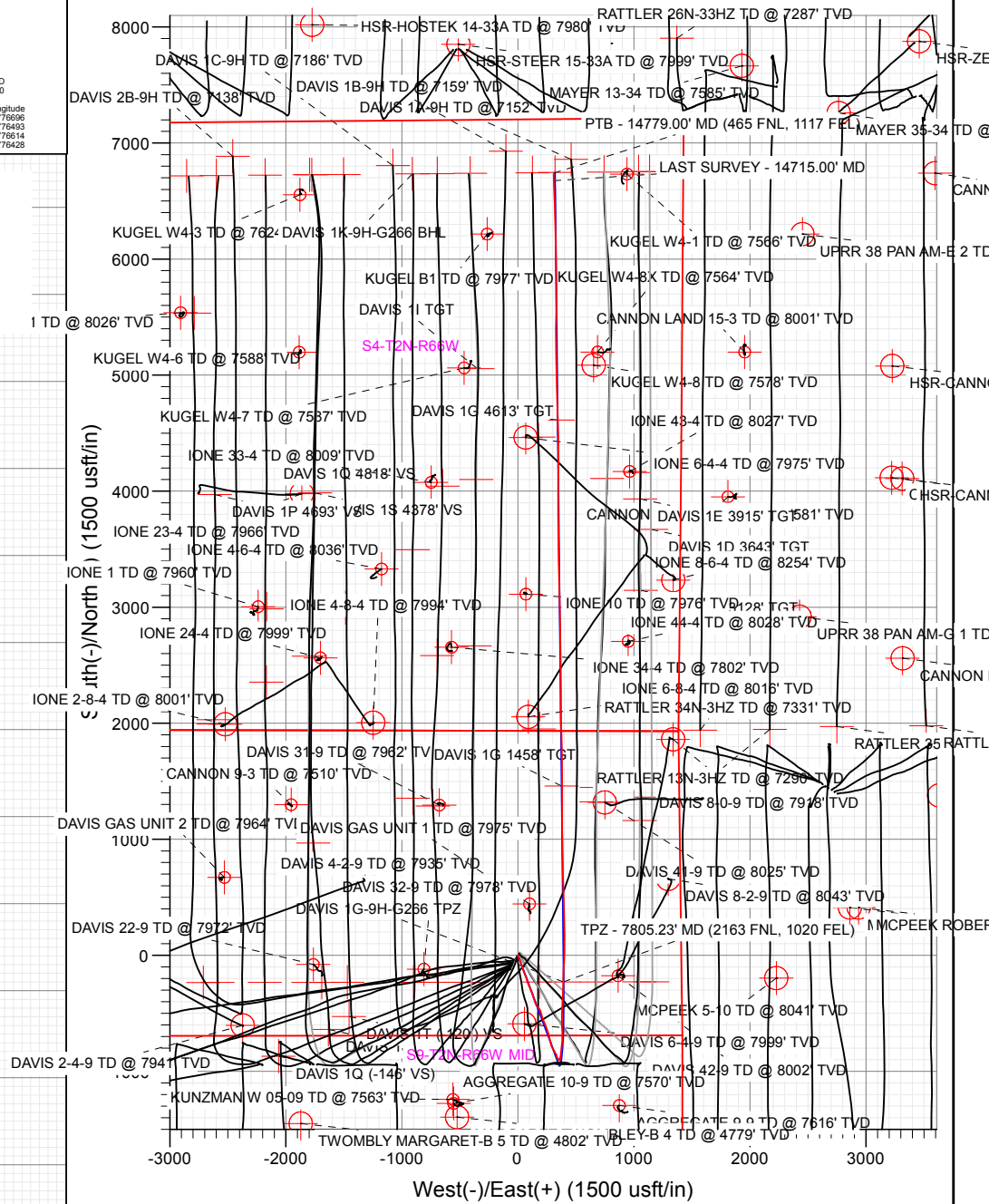
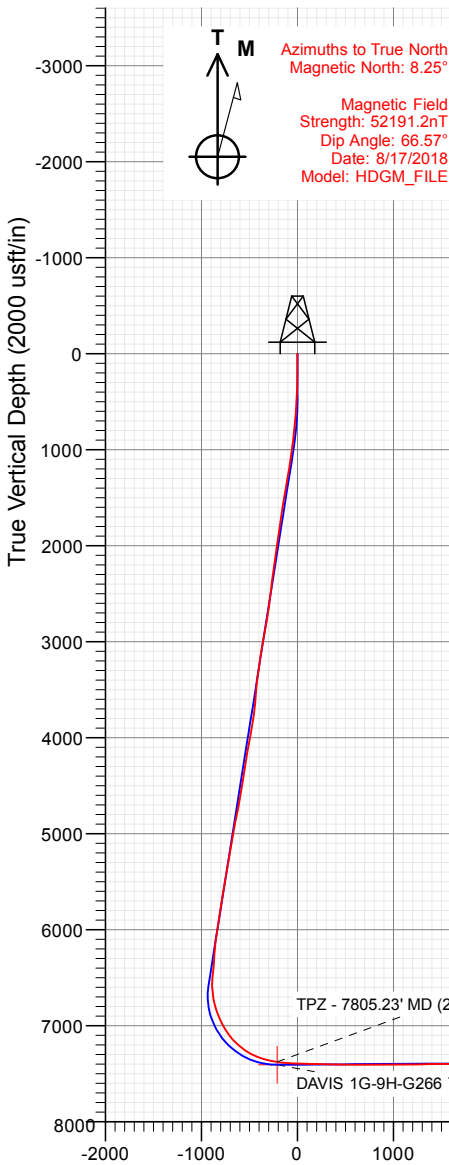
SECTION DETAILS

Sec	MD	Inc	Azi	TVD	+N/-S	+E/-W	Dleg	TFace	Vsect	Target
1	0.00	0.00	0.00	0.00	0.00	0.00	0.00	0.00	0.00	
2	500.00	0.00	0.00	500.00	0.00	0.00	0.00	0.00	0.00	
3	989.62	9.79	159.47	987.24	-39.09	14.64	2.00	159.47	-38.35	
4	6662.78	9.79	159.47	6577.75	-942.70	353.02	0.00	0.00	-924.93	
5	7907.89	90.41	359.39	7407.00	-230.15	394.49	8.00	-159.79	-211.22	DAVIS 1G-9H-G266 TPZ
6	9596.18	90.41	359.39	7395.00	1458.00	376.39	0.00	0.00	1474.18	DAVIS 1G 1458' TGT
7	9617.52	89.98	359.39	7394.93	1479.35	376.16	2.00	-180.00	1495.49	
8	12746.34	89.98	359.39	7396.00	4607.99	342.61	0.00	0.00	4619.04	
9	12751.36	90.08	359.39	7396.00	4613.00	342.55	2.00	0.00	4624.04	DAVIS 1G 4613' TGT
10	14884.21	90.08	359.39	7393.00	6745.72	319.68	0.00	0.00	6753.30	DAVIS 1G-9H-G266 BHL

FINAL
DAVIS 1G-9H-G266
380237 185149 409937 185248
23 KB @ 4940.00usft
Ground Level @ 4917.00
North American Datum 1983
Well DAVIS 1G-9H-G266 - Slot DAVIS 1G-9H, True North

Type	Target	No Target (Freehand)	Azimuth	Origin Type	N/S	E/W	From TVD
Name	TVD	+N/-S	+E/-W	Latitude	Longitude		
DAVIS 1G-9H-G266 BHL	7393.00	6745.72	319.68	40.173029	-104.776696		
DAVIS 1G 1458' TGT	7396.00	1458.00	376.39	40.158514	-104.776493		
DAVIS 1G 4613' TGT	7396.00	4613.00	342.55	40.167175	-104.776614		
DAVIS 1G-9H-G266 TPZ	7407.00	-230.15	394.49	40.153880	-104.776428		

Project: DJ BASIN
Site: S4-T2N-R66W
Well: DAVIS 1G-9H-G266
Wellbore: OH
Design: FINAL



Vertical Section at 2.71° (2000 usft/in)

WELL DETAILS: DAVIS 1G-9H-G266

+N/-S	+E/-W	Northing	Easting	Latitude	Longitude
0.00	0.00	1299953.77	3201855.19	40.154511	-104.777840

CATHEDRAL





CRESTONE PEAK
RESOURCES

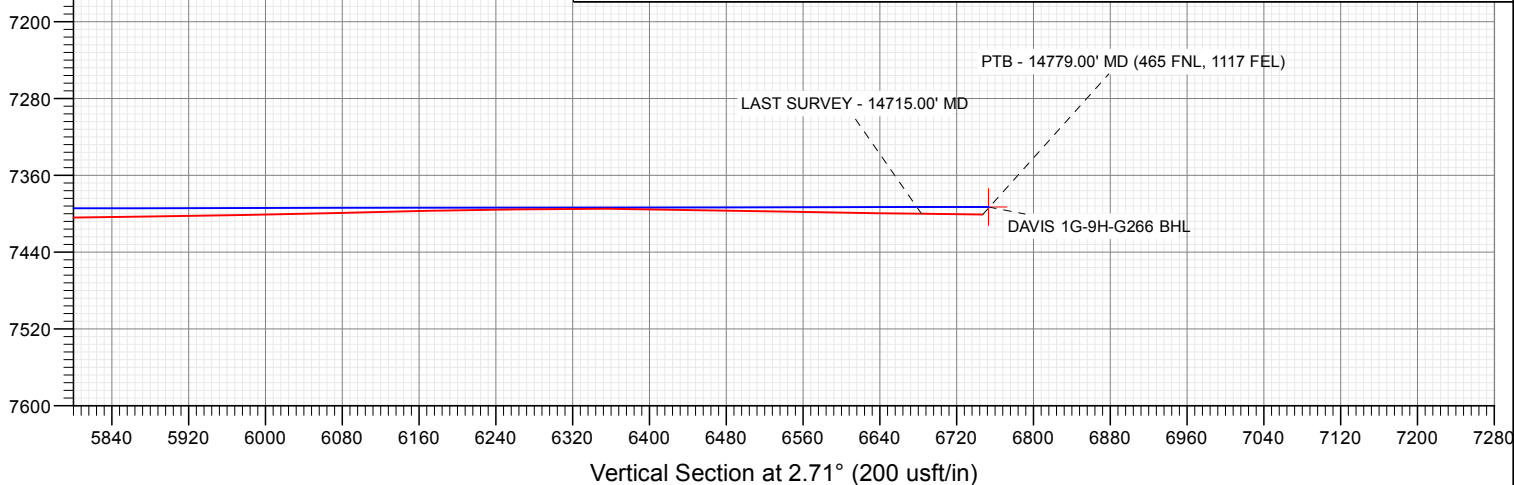
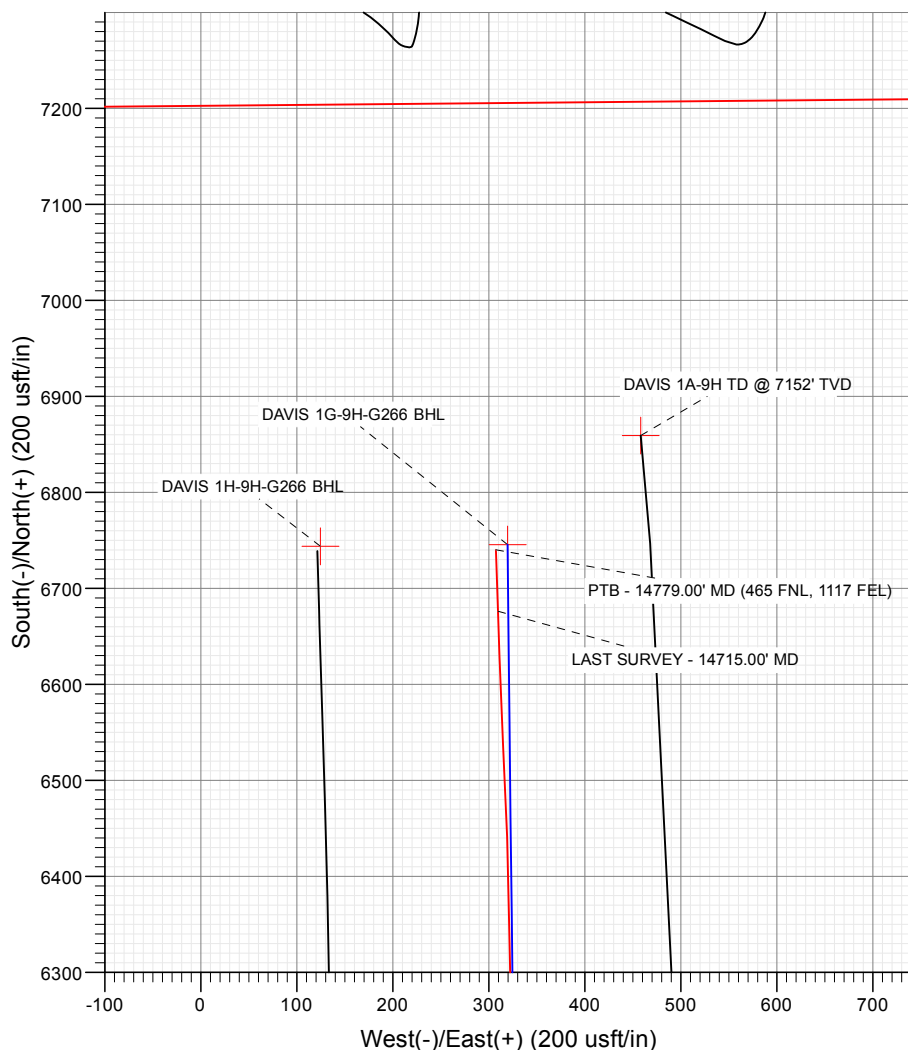
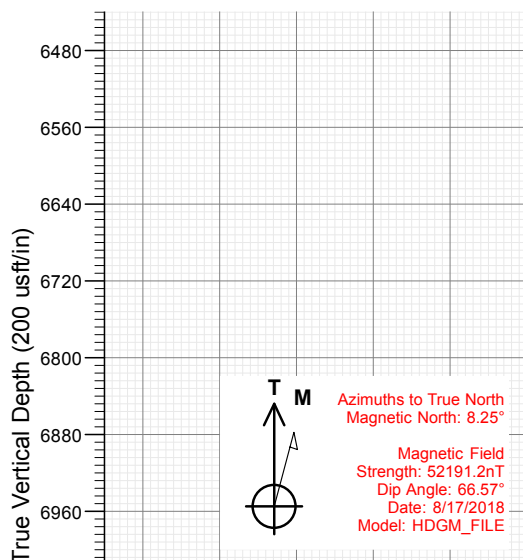
SECTION DETAILS

Sec	MD	Inc	Azi	TVD	+N/-S	+E/-W	Dleg	TFace	VSect	Target
1	0.00	0.00	0.00	0.00	0.00	0.00	0.00	0.00	0.00	
2	500.00	0.00	0.00	500.00	0.00	0.00	0.00	0.00	0.00	
3	989.62	9.79	159.47	987.24	-39.09	14.64	2.00	159.47	-38.35	
4	6662.78	9.79	159.47	6577.75	-942.70	353.02	0.00	0.00	-924.93	
5	7907.89	90.41	359.39	7407.00	-230.15	394.49	8.00	-159.79	-211.22	DAVIS 1G-9H-G266 TPZ
6	9596.18	90.41	359.39	7395.00	1458.00	376.39	0.00	0.00	1474.18	DAVIS 1G 1458' TGT
7	9617.52	89.98	359.39	7394.93	1479.35	376.16	2.00	-180.00	1495.49	
8	12746.34	89.98	359.39	7396.00	4607.99	342.61	0.00	0.00	4619.04	
9	12751.36	90.08	359.39	7396.00	4613.00	342.55	2.00	0.00	4624.04	DAVIS 1G 4613' TGT
10	14884.21	90.08	359.39	7393.00	6745.72	319.68	0.00	0.00	6753.30	DAVIS 1G-9H-G266 BHL

FINAL
DAVIS 1G-9H-G266
380227 185149 409937 185248
23 KB @ 4940.00usft
Ground Level @ 4917.00
North American Datum 1983
Well DAVIS 1G-9H-G266 - Slot DAVIS 1G-9H, True North

Type	Target	Azimuth	Origin	Type	N/S	E/W	From
User	No Target (Freehand)	2.71	Slot		0.00	0.00	TVD
Name							
DAVIS 1G-9H-G266 BHL		7393.00	6745.72	319.68	40.173029	-104.776696	
DAVIS 1G 1458' TGT		7395.00	1458.00	376.39	40.158514	-104.776493	
DAVIS 1G 4613' TGT		7396.00	4613.00	342.55	40.167175	-104.776614	
DAVIS 1G-9H-G266 TPZ		7407.00	-230.15	394.49	40.153880	-104.776428	

Project: DJ BASIN
Site: S4-T2N-R66W
Well: DAVIS 1G-9H-G266
Wellbore: OH
Design: FINAL



WELL DETAILS: DAVIS 1G-9H-G266

+N/-S	+E/-W	Northing	Easting	Latitude	Longitude
0.00	0.00	1299953.77	3201855.19	40.154511	-104.777840

CATHEDRAL



Survey Report

Company:	Crestone Peak Resources	Local Co-ordinate Reference:	Well DAVIS 1G-9H-G266 - Slot DAVIS 1G-9H
Project:	DJ BASIN	TVD Reference:	23' KB @ 4940.00usft
Site:	S4-T2N-R66W	MD Reference:	23' KB @ 4940.00usft
Well:	DAVIS 1G-9H-G266	North Reference:	True
Wellbore:	OH	Survey Calculation Method:	Minimum Curvature
Design:	FINAL	Database:	USA EDM 5000 Multi Users DB

Project	DJ BASIN		
Map System:	US State Plane 1983	System Datum:	Mean Sea Level
Geo Datum:	North American Datum 1983		
Map Zone:	Colorado Northern Zone		

Site		S4-T2N-R66W			
Site Position:		Northing:	1,300,048.95 usft	Latitude:	40.154783
From:	Map	Easting:	3,201,389.75 usft	Longitude:	-104.779502
Position Uncertainty:	0.00 usft	Slot Radius:	13-3/16 "	Grid Convergence:	0.47 °

Well	DAVIS 1G-9H-G266 - Slot DAVIS 1G-9H					
Well Position	+N/-S	0.00 usft	Northing:	1,299,953.77 usft	Latitude:	40.154511
	+E/-W	0.00 usft	Easting:	3,201,855.19 usft	Longitude:	-104.777840
Position Uncertainty		0.00 usft	Wellhead Elevation:	usft	Ground Level:	4,917.00 usft

Wellbore	OH				
Magnetics	Model Name	Sample Date	Declination (°)	Dip Angle (°)	Field Strength (nT)
	HDGM_FILE	8/17/2018	8.25	66.57	52,191.20000000

Design	FINAL				
Audit Notes:					
Version:	1.0	Phase:	ACTUAL	Tie On Depth:	0.00
Vertical Section:	Depth From (TVD) (usft)	+N/-S (usft)	+E/-W (usft)	Direction (°)	
	0.00	0.00	0.00	2.71	

Survey Program	Date	9/6/2018			
From (usft)	To (usft)	Survey (Wellbore)	Tool Name	Description	
106.00	2,126.00	Survey #1 (OH)	VESSI_GYROFLEX	VESSI Gyroflex Gyro	
2,240.00	14,779.00	Survey #2 (OH)	MWD+HDGM	OWSG MWD + HDGM	

Survey									
Measured Depth (usft)	Inclination (°)	Azimuth (°)	Vertical Depth (usft)	+N/-S (usft)	+E/-W (usft)	Vertical Section (usft)	Dogleg Rate (°/100usf)	Build Rate (°/100u)	Formations / Comments
0.00	0.00	0.00	0.00	0.00	0.00	0.00	0.00	0.00	
106.00	0.38	299.68	106.00	0.17	-0.31	0.16	0.36	0.36	
138.00	0.54	299.68	138.00	0.30	-0.53	0.28	0.50	0.50	
170.00	0.38	279.89	170.00	0.39	-0.76	0.36	0.70	-0.50	
201.00	0.27	205.06	201.00	0.35	-0.90	0.30	1.30	-0.35	
233.00	0.70	168.92	233.00	0.09	-0.89	0.04	1.59	1.34	
264.00	1.18	161.45	263.99	-0.40	-0.75	-0.44	1.59	1.55	
295.00	1.56	160.13	294.98	-1.10	-0.51	-1.13	1.23	1.23	
327.00	1.77	162.06	326.97	-1.98	-0.21	-1.99	0.68	0.66	
359.00	1.85	159.25	358.95	-2.94	0.13	-2.93	0.37	0.25	
390.00	1.96	155.29	389.94	-3.88	0.53	-3.86	0.55	0.35	
421.00	1.99	153.18	420.92	-4.85	0.99	-4.79	0.25	0.10	

Survey Report

Company:	Crestone Peak Resources	Local Co-ordinate Reference:	Well DAVIS 1G-9H-G266 - Slot DAVIS 1G-9H
Project:	DJ BASIN	TVD Reference:	23' KB @ 4940.00usft
Site:	S4-T2N-R66W	MD Reference:	23' KB @ 4940.00usft
Well:	DAVIS 1G-9H-G266	North Reference:	True
Wellbore:	OH	Survey Calculation Method:	Minimum Curvature
Design:	FINAL	Database:	USA EDM 5000 Multi Users DB

Survey									
Measured Depth (usft)	Inclination (°)	Azimuth (°)	Vertical Depth (usft)	+N/-S (usft)	+E/-W (usft)	Vertical Section (usft)	Dogleg Rate (°/100usf)	Build Rate (°/100u)	Formations / Comments
453.00	2.02	156.79	452.90	-5.86	1.46	-5.79	0.41	0.09	
484.00	2.50	156.96	483.87	-6.99	1.94	-6.89	1.55	1.55	
515.00	3.41	160.13	514.83	-8.47	2.52	-8.35	2.98	2.94	
547.00	4.22	160.74	546.76	-10.48	3.23	-10.32	2.53	2.53	
578.00	4.86	160.65	577.66	-12.80	4.05	-12.59	2.06	2.06	
610.00	5.13	163.12	609.54	-15.44	4.91	-15.20	1.08	0.84	
677.00	6.55	161.81	676.19	-21.94	6.97	-21.59	2.13	2.12	
772.00	7.13	157.14	770.52	-32.52	10.95	-31.97	0.85	0.61	
866.00	6.22	158.84	863.88	-42.65	15.06	-41.89	0.99	-0.97	
961.00	6.45	154.27	958.30	-52.25	19.23	-51.29	0.58	0.24	
1,055.00	9.50	156.94	1,051.38	-64.15	24.56	-62.92	3.27	3.24	
1,150.00	10.55	160.87	1,144.93	-79.58	30.49	-78.05	1.32	1.11	
1,245.00	9.60	161.52	1,238.46	-95.31	35.85	-93.51	1.01	-1.00	
1,339.00	9.89	160.34	1,331.11	-110.35	41.05	-108.28	0.37	0.31	
1,433.00	10.59	162.29	1,423.61	-126.18	46.39	-123.84	0.83	0.74	
1,528.00	10.50	162.40	1,517.00	-142.74	51.66	-140.14	0.10	-0.09	
1,622.00	10.50	155.70	1,609.43	-158.72	57.78	-155.81	1.30	0.00	
1,717.00	9.59	150.55	1,702.98	-173.50	65.23	-170.22	1.35	-0.96	
1,812.00	7.81	155.19	1,796.88	-186.25	71.83	-182.64	2.01	-1.87	
1,907.00	8.59	165.07	1,890.92	-198.96	76.37	-195.13	1.69	0.82	
2,001.00	8.48	170.41	1,983.88	-212.58	79.33	-208.59	0.85	-0.12	
2,095.00	8.80	167.71	2,076.81	-226.44	82.02	-222.31	0.55	0.34	
2,126.00	9.19	164.12	2,107.43	-231.14	83.20	-226.94	2.20	1.26	
2,240.00	8.97	156.44	2,220.00	-248.04	89.24	-243.54	1.08	-0.19	
2,271.00	8.83	156.18	2,250.63	-252.43	91.17	-247.84	0.47	-0.45	
2,366.00	8.26	155.48	2,344.58	-265.31	96.95	-260.43	0.61	-0.60	
2,460.00	7.12	154.42	2,437.73	-276.71	102.26	-271.56	1.22	-1.21	
2,555.00	8.09	154.77	2,531.89	-288.07	107.66	-282.65	1.02	1.02	
2,649.00	9.01	153.90	2,624.85	-300.66	113.71	-294.95	0.99	0.98	
2,743.00	9.89	163.91	2,717.58	-315.03	119.19	-309.04	1.98	0.94	
2,837.00	9.32	163.04	2,810.26	-330.06	123.65	-323.85	0.63	-0.61	
2,932.00	11.91	162.77	2,903.62	-346.79	128.80	-340.31	2.73	2.73	
3,026.00	10.90	162.24	2,995.77	-364.52	134.38	-357.76	1.08	-1.07	
3,121.00	10.02	162.16	3,089.19	-380.94	139.65	-373.91	0.93	-0.93	
3,215.00	8.79	163.21	3,181.92	-395.60	144.23	-388.34	1.32	-1.31	
3,310.00	9.27	155.57	3,275.75	-409.52	149.49	-401.99	1.36	0.51	
3,404.00	7.60	156.36	3,368.73	-422.10	155.12	-414.30	1.78	-1.78	
3,499.00	7.30	149.50	3,462.93	-433.06	160.70	-424.98	0.99	-0.32	
3,593.00	5.58	131.48	3,556.34	-441.23	167.16	-432.84	2.80	-1.83	
3,688.00	8.26	139.13	3,650.64	-449.46	175.08	-440.68	2.98	2.82	
3,783.00	8.61	148.62	3,744.62	-460.69	183.25	-451.51	1.51	0.37	
3,878.00	10.50	154.77	3,838.30	-474.59	190.65	-465.05	2.26	1.99	
3,972.00	9.98	165.15	3,930.81	-490.21	196.38	-480.38	2.04	-0.55	
4,066.00	11.60	163.39	4,023.14	-507.14	201.17	-497.07	1.76	1.72	
4,161.00	10.94	164.18	4,116.31	-524.97	206.36	-514.63	0.71	-0.69	
4,256.00	9.89	165.50	4,209.75	-541.54	210.86	-530.97	1.13	-1.11	
4,371.00	10.77	154.42	4,322.89	-560.80	217.97	-549.86	1.89	0.77	
4,467.00	8.57	150.03	4,417.52	-575.09	225.42	-563.79	2.42	-2.29	
4,562.00	10.42	157.76	4,511.22	-589.17	232.21	-577.53	2.36	1.95	
4,656.00	11.47	162.16	4,603.51	-605.94	238.29	-593.99	1.43	1.12	
4,751.00	10.55	157.15	4,696.77	-622.94	244.56	-610.68	1.40	-0.97	
4,846.00	12.44	163.65	4,789.86	-640.78	250.82	-628.20	2.41	1.99	
4,940.00	10.94	161.54	4,881.91	-658.96	256.50	-646.09	1.66	-1.60	

Survey Report

Company:	Crestone Peak Resources	Local Co-ordinate Reference:	Well DAVIS 1G-9H-G266 - Slot DAVIS 1G-9H
Project:	DJ BASIN	TVD Reference:	23' KB @ 4940.00usft
Site:	S4-T2N-R66W	MD Reference:	23' KB @ 4940.00usft
Well:	DAVIS 1G-9H-G266	North Reference:	True
Wellbore:	OH	Survey Calculation Method:	Minimum Curvature
Design:	FINAL	Database:	USA EDM 5000 Multi Users DB

Survey									
Measured Depth (usft)	Inclination (°)	Azimuth (°)	Vertical Depth (usft)	+N/-S (usft)	+E/-W (usft)	Vertical Section (usft)	Dogleg Rate (°/100usf)	Build Rate (°/100u)	Formations / Comments
5,034.00	10.68	159.52	4,974.24	-675.58	262.37	-662.42	0.49	-0.28	
5,129.00	11.65	167.87	5,067.45	-693.20	267.46	-679.78	1.98	1.02	
5,224.00	10.50	167.17	5,160.68	-711.02	271.40	-697.39	1.22	-1.21	
5,318.00	9.19	166.99	5,253.29	-726.69	274.99	-712.87	1.39	-1.39	
5,413.00	9.32	158.82	5,347.06	-741.25	279.48	-727.21	1.39	0.14	
5,507.00	10.06	171.56	5,439.73	-756.47	283.44	-742.23	2.41	0.79	
5,602.00	10.77	163.74	5,533.16	-773.20	287.14	-758.76	1.66	0.75	
5,696.00	11.51	160.05	5,625.39	-790.45	292.80	-775.72	1.09	0.79	
5,791.00	10.28	143.26	5,718.70	-806.16	301.11	-791.02	3.57	-1.29	
5,885.00	11.12	150.20	5,811.07	-820.74	310.63	-805.14	1.63	0.89	
5,980.00	8.92	154.51	5,904.62	-835.34	318.35	-819.36	2.45	-2.32	
6,075.00	11.07	145.90	5,998.18	-849.55	326.64	-833.15	2.75	2.26	
6,169.00	8.26	170.33	6,090.87	-863.69	332.83	-846.98	5.23	-2.99	
6,263.00	5.58	167.34	6,184.18	-874.80	334.97	-857.99	2.88	-2.85	
6,357.00	4.44	138.95	6,277.83	-882.01	338.36	-865.02	2.86	-1.21	
6,452.00	7.21	132.45	6,372.33	-888.80	345.18	-871.49	2.99	2.92	
6,546.00	8.22	147.39	6,465.49	-898.45	353.15	-880.75	2.38	1.07	
6,641.00	2.99	121.73	6,560.02	-905.48	358.92	-887.49	5.97	-5.51	
6,688.00	5.45	33.31	6,606.92	-904.26	361.19	-886.17	13.07	5.23	
6,736.00	5.63	4.48	6,654.71	-900.00	362.63	-881.85	5.75	0.37	
6,783.00	8.04	9.84	6,701.37	-894.46	363.37	-876.28	5.30	5.13	
6,830.00	11.51	10.90	6,747.68	-886.62	364.82	-868.38	7.39	7.38	
6,877.00	15.60	6.41	6,793.36	-875.73	366.41	-857.43	8.98	8.70	
6,924.00	19.16	7.56	6,838.21	-861.80	368.13	-843.43	7.61	7.57	
6,971.00	21.36	9.93	6,882.30	-845.72	370.63	-827.25	5.00	4.68	
7,019.00	23.91	6.59	6,926.60	-827.44	373.25	-808.87	5.95	5.31	
7,066.00	26.06	6.24	6,969.20	-807.72	375.47	-789.06	4.59	4.57	
7,113.00	29.27	4.13	7,010.82	-785.99	377.42	-767.26	7.14	6.83	
7,160.00	32.17	5.27	7,051.22	-762.06	379.39	-743.27	6.29	6.17	
7,208.00	36.83	2.11	7,090.77	-734.94	381.10	-716.10	10.40	9.71	
7,255.00	40.34	2.28	7,127.51	-705.66	382.22	-686.80	7.47	7.47	
7,303.00	44.87	0.00	7,162.83	-673.18	382.84	-654.33	9.97	9.44	
7,350.00	47.59	356.75	7,195.34	-639.27	381.86	-620.50	7.64	5.79	
7,397.00	51.20	356.83	7,225.93	-603.65	379.86	-585.01	7.68	7.68	
7,444.00	54.89	359.74	7,254.18	-566.12	378.76	-547.58	9.28	7.85	
7,492.00	59.72	1.32	7,280.11	-525.74	379.15	-507.23	10.44	10.06	
7,539.00	63.90	2.11	7,302.30	-484.34	380.39	-465.82	9.02	8.89	
7,587.00	67.68	2.72	7,321.98	-440.61	382.24	-422.05	7.96	7.87	
7,634.00	71.02	3.07	7,338.56	-396.70	384.46	-378.07	7.14	7.11	
7,682.00	75.06	2.64	7,352.56	-350.85	386.75	-332.17	8.46	8.42	
7,729.00	78.35	2.55	7,363.36	-305.16	388.82	-286.44	7.00	7.00	
7,776.00	80.29	0.88	7,372.07	-259.00	390.20	-240.26	5.41	4.13	
7,805.23	81.27	1.04	7,376.76	-230.15	390.68	-211.42	3.41	3.36	TPZ - 7805.23' MD (2163 FNL, 1020 FEL)
7,823.00	81.87	1.14	7,379.36	-212.58	391.02	-193.85	3.41	3.36	
7,870.00	82.53	1.67	7,385.74	-166.03	392.16	-147.30	1.79	1.40	
7,917.00	85.21	2.55	7,390.76	-119.33	393.88	-100.58	6.00	5.70	
7,965.00	88.11	3.07	7,393.55	-71.48	396.23	-52.66	6.14	6.04	
8,059.00	88.95	2.02	7,395.96	22.40	400.40	41.30	1.43	0.89	
8,153.00	88.02	0.17	7,398.45	116.34	402.20	135.23	2.20	-0.99	
8,248.00	88.29	358.33	7,401.51	211.28	400.95	230.00	1.96	0.28	
8,342.00	88.68	358.50	7,403.99	305.21	398.35	323.70	0.45	0.41	
8,437.00	90.22	359.12	7,404.91	400.18	396.38	418.48	1.75	1.62	
8,532.00	89.78	358.24	7,404.91	495.16	394.19	513.24	1.04	-0.46	

Survey Report

Company:	Crestone Peak Resources	Local Co-ordinate Reference:	Well DAVIS 1G-9H-G266 - Slot DAVIS 1G-9H
Project:	DJ BASIN	TVD Reference:	23' KB @ 4940.00usft
Site:	S4-T2N-R66W	MD Reference:	23' KB @ 4940.00usft
Well:	DAVIS 1G-9H-G266	North Reference:	True
Wellbore:	OH	Survey Calculation Method:	Minimum Curvature
Design:	FINAL	Database:	USA EDM 5000 Multi Users DB

Survey									
Measured Depth (usft)	Inclination (°)	Azimuth (°)	Vertical Depth (usft)	+N/-S (usft)	+E/-W (usft)	Vertical Section (usft)	Dogleg Rate (°/100usf)	Build Rate (°/100u)	Formations / Comments
8,626.00	89.52	358.07	7,405.48	589.11	391.17	606.94	0.33	-0.28	
8,720.00	89.08	358.33	7,406.63	683.05	388.21	700.64	0.54	-0.47	
8,814.00	90.75	358.94	7,406.77	777.02	385.98	794.40	1.89	1.78	
8,909.00	90.26	358.86	7,405.93	872.00	384.15	889.19	0.52	-0.52	
9,003.00	89.60	358.94	7,406.05	965.98	382.35	982.98	0.71	-0.70	
9,098.00	91.14	359.82	7,405.43	1,060.97	381.32	1,077.81	1.87	1.62	
9,193.00	90.88	359.74	7,403.76	1,155.96	380.95	1,172.67	0.29	-0.27	
9,287.00	90.57	359.56	7,402.57	1,249.95	380.38	1,266.53	0.38	-0.33	
9,382.00	91.14	0.97	7,401.15	1,344.93	380.82	1,361.43	1.60	0.60	
9,477.00	90.88	0.17	7,399.48	1,439.91	381.76	1,456.35	0.89	-0.27	
9,571.00	90.44	359.47	7,398.39	1,533.90	381.47	1,550.22	0.88	-0.47	
9,666.00	90.35	359.38	7,397.74	1,628.90	380.52	1,645.07	0.13	-0.09	
9,760.00	90.04	359.03	7,397.42	1,722.89	379.21	1,738.89	0.50	-0.33	
9,854.00	89.74	358.33	7,397.60	1,816.86	377.05	1,832.66	0.81	-0.32	
9,948.00	89.43	357.80	7,398.28	1,910.80	373.87	1,926.34	0.65	-0.33	
10,042.00	89.25	357.45	7,399.36	2,004.72	369.98	2,019.97	0.42	-0.19	
10,137.00	89.74	0.00	7,400.20	2,099.68	367.86	2,114.73	2.73	0.52	
10,232.00	89.69	359.91	7,400.67	2,194.68	367.79	2,209.62	0.11	-0.05	
10,327.00	89.60	359.56	7,401.26	2,289.68	367.35	2,304.49	0.38	-0.09	
10,421.00	89.65	0.97	7,401.88	2,383.67	367.78	2,398.40	1.50	0.05	
10,516.00	89.87	1.14	7,402.27	2,478.66	369.53	2,493.35	0.29	0.23	
10,610.00	91.63	359.03	7,401.04	2,572.64	369.67	2,587.24	2.92	1.87	
10,704.00	91.54	359.21	7,398.44	2,666.59	368.23	2,681.02	0.21	-0.10	
10,798.00	90.88	357.71	7,396.46	2,760.53	365.70	2,774.74	1.74	-0.70	
10,893.00	90.04	359.30	7,395.70	2,855.49	363.23	2,869.47	1.89	-0.88	
10,987.00	89.87	358.07	7,395.77	2,949.47	361.07	2,963.24	1.32	-0.18	
11,082.00	89.65	359.30	7,396.17	3,044.44	358.89	3,058.00	1.32	-0.23	
11,176.00	88.15	358.59	7,397.97	3,138.40	357.16	3,151.78	1.77	-1.60	
11,271.00	86.92	358.15	7,402.06	3,233.27	354.46	3,246.42	1.37	-1.29	
11,365.00	87.98	358.68	7,406.24	3,327.14	351.86	3,340.06	1.26	1.13	
11,460.00	90.44	359.65	7,407.55	3,422.12	350.48	3,434.86	2.78	2.59	
11,554.00	89.74	358.42	7,407.40	3,516.10	348.89	3,528.66	1.51	-0.74	
11,648.00	88.95	0.17	7,408.48	3,610.08	347.74	3,622.49	2.04	-0.84	
11,742.00	90.31	0.26	7,409.08	3,704.08	348.09	3,716.39	1.45	1.45	
11,837.00	90.44	359.91	7,408.46	3,799.08	348.23	3,811.29	0.39	0.14	
11,930.00	90.92	0.35	7,407.36	3,892.07	348.44	3,904.19	0.70	0.52	
12,025.00	88.99	0.26	7,407.43	3,987.06	348.95	3,999.10	2.03	-2.03	
12,119.00	88.73	359.56	7,409.30	4,081.04	348.80	4,092.97	0.79	-0.28	
12,213.00	90.22	0.61	7,410.16	4,175.03	348.94	4,186.86	1.94	1.59	
12,308.00	90.09	0.35	7,409.91	4,270.03	349.74	4,281.79	0.31	-0.14	
12,402.00	89.60	359.30	7,410.16	4,364.03	349.45	4,375.67	1.23	-0.52	
12,496.00	90.79	358.24	7,409.84	4,458.00	347.43	4,469.44	1.70	1.27	
12,590.00	90.40	358.59	7,408.87	4,551.96	344.83	4,563.18	0.56	-0.41	
12,685.00	90.09	358.07	7,408.46	4,646.92	342.06	4,657.90	0.64	-0.33	
12,780.00	90.35	358.68	7,408.09	4,741.88	339.37	4,752.62	0.70	0.27	
12,874.00	90.75	358.50	7,407.19	4,835.85	337.06	4,846.38	0.47	0.43	
12,969.00	90.57	358.33	7,406.10	4,930.81	334.43	4,941.10	0.26	-0.19	
13,063.00	90.13	359.74	7,405.52	5,024.79	332.85	5,034.91	1.57	-0.47	
13,158.00	89.87	358.86	7,405.52	5,119.78	331.69	5,129.74	0.97	-0.27	
13,252.00	89.47	358.59	7,406.07	5,213.75	329.59	5,223.51	0.51	-0.43	
13,346.00	90.04	359.21	7,406.47	5,307.74	327.79	5,317.30	0.90	0.61	
13,440.00	89.69	0.70	7,406.69	5,401.73	327.72	5,411.19	1.63	-0.37	
13,535.00	90.48	1.32	7,406.55	5,496.72	329.39	5,506.14	1.06	0.83	

Survey Report

Company:	Crestone Peak Resources	Local Co-ordinate Reference:	Well DAVIS 1G-9H-G266 - Slot DAVIS 1G-9H
Project:	DJ BASIN	TVD Reference:	23' KB @ 4940.00usft
Site:	S4-T2N-R66W	MD Reference:	23' KB @ 4940.00usft
Well:	DAVIS 1G-9H-G266	North Reference:	True
Wellbore:	OH	Survey Calculation Method:	Minimum Curvature
Design:	FINAL	Database:	USA EDM 5000 Multi Users DB

Survey									
Measured Depth (usft)	Inclination (°)	Azimuth (°)	Vertical Depth (usft)	+N/-S (usft)	+E/-W (usft)	Vertical Section (usft)	Dogleg Rate (°/100usf)	Build Rate (°/100u)	Formations / Comments
13,629.00	90.35	0.09	7,405.87	5,590.70	330.55	5,600.08	1.32	-0.14	
13,724.00	90.62	0.00	7,405.06	5,685.70	330.62	5,694.97	0.30	0.28	
13,818.00	90.53	359.12	7,404.12	5,779.69	329.90	5,788.83	0.94	-0.10	
13,913.00	90.97	359.38	7,402.88	5,874.68	328.66	5,883.65	0.54	0.46	
14,007.00	90.84	359.03	7,401.39	5,968.66	327.35	5,977.46	0.40	-0.14	
14,102.00	91.67	358.86	7,399.31	6,063.62	325.60	6,072.23	0.89	0.87	
14,197.00	90.88	359.82	7,397.20	6,158.58	324.51	6,167.04	1.31	-0.83	
14,292.00	91.23	358.59	7,395.45	6,253.56	323.19	6,261.84	1.35	0.37	
14,386.00	89.39	359.03	7,394.94	6,347.53	321.24	6,355.62	2.01	-1.96	
14,480.00	88.99	358.24	7,396.27	6,441.49	319.00	6,449.37	0.94	-0.43	
14,574.00	88.95	356.75	7,397.96	6,535.39	314.89	6,542.97	1.59	-0.04	
14,669.00	89.21	358.68	7,399.48	6,630.29	311.11	6,637.59	2.05	0.27	
14,715.00	89.25	357.98	7,400.10	6,676.27	309.77	6,683.45	1.52	0.09	LAST SURVEY - 14715.00' MD
14,779.00	89.25	357.98	7,400.94	6,740.22	307.51	6,747.23	0.00	0.00	PTB - 14779.00' MD (465 FNL, 1117 FEL)

Targets									
Target Name	Dip Angle (°)	Dip Dir. (°)	TVD (usft)	+N/-S (usft)	+E/-W (usft)	Northing (usft)	Easting (usft)	Latitude	Longitude
DAVIS 1G-9H-G266 BHI - hit/miss target - Shape	0.00	0.00	7,393.00	6,745.72	319.68	1,306,701.87	3,202,119.93	40.173029	-104.776696
- actual wellpath misses target center by 15.54usft at 14779.00usft MD (7400.94 TVD, 6740.22 N, 307.51 E)									
- Point									
DAVIS 1G-9H-G266 TP2 - hit/miss target - Shape	0.00	0.00	7,407.00	-230.15	394.49	1,299,726.84	3,202,251.54	40.153880	-104.776428
- actual wellpath misses target center by 30.13usft at 7809.74usft MD (7377.43 TVD, -225.70 N, 390.76 E)									
- Point									
DAVIS 1G 1458' TGT - hit/miss target - Shape	0.00	0.00	7,395.00	1,458.00	376.39	1,301,414.79	3,202,219.69	40.158514	-104.776493
- actual wellpath misses target center by 6.86usft at 9495.16usft MD (7399.21 TVD, 1458.07 N, 381.80 E)									
- Point									
DAVIS 1G 4613' TGT - hit/miss target - Shape	0.00	0.00	7,396.00	4,613.00	342.55	1,304,569.41	3,202,160.17	40.167175	-104.776614
- actual wellpath misses target center by 12.56usft at 12651.13usft MD (7408.55 TVD, 4613.07 N, 343.15 E)									
- Point									

Design Annotations					
Measured Depth (usft)	Vertical Depth (usft)	Local Coordinates		Comment	
		+N/-S (usft)	+E/-W (usft)		
7,805.23	7,376.76	-230.15	390.68	TPZ - 7805.23' MD (2163 FNL, 1020 FEL)	
14,715.00	7,400.10	6,676.27	309.77	LAST SURVEY - 14715.00' MD	
14,779.00	7,400.94	6,740.22	307.51	PTB - 14779.00' MD (465 FNL, 1117 FEL)	

Checked By: _____	Approved By: _____	Date: _____
-------------------	--------------------	-------------