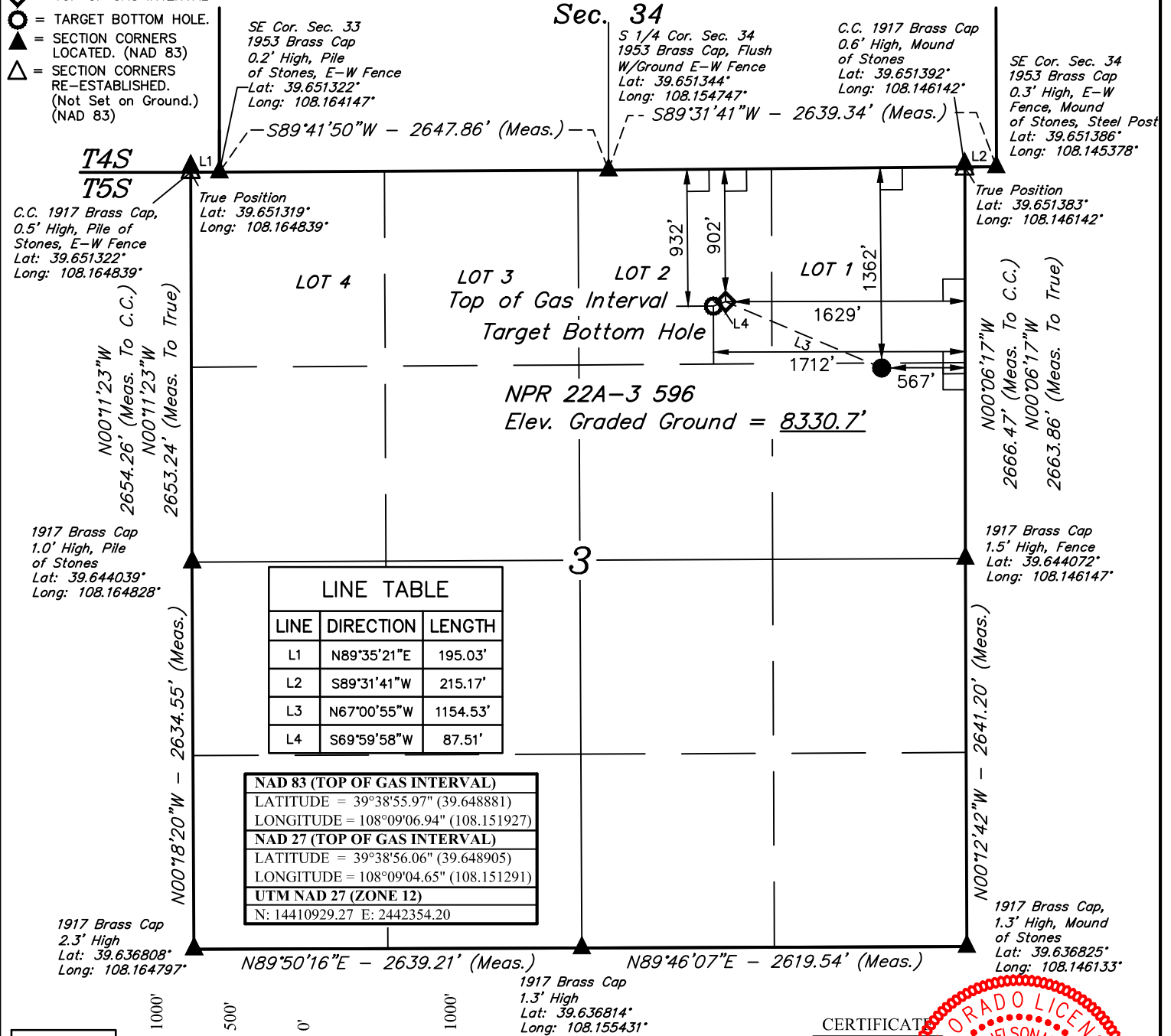


LEGEND:

- ◻ = 90° SYMBOL
- = PROPOSED WELLHEAD.
- ◊ = TOP OF GAS INTERVAL
- = TARGET BOTTOM HOLE.
- ▲ = SECTION CORNERS LOCATED. (NAD 83)
- △ = SECTION CORNERS RE-ESTABLISHED. (Not Set on Ground.) (NAD 83)

T5S, R96W, 6th P.M.

Sec. 34



NAD 83 (SURFACE LOCATION)	NAD 83 (TARGET BOTTOM HOLE)
LATITUDE = 39°38'51.49" (39.647637)	LATITUDE = 39°38'55.68" (39.648799)
LONGITUDE = 108°08'53.37" (108.148157)	LONGITUDE = 108°09'07.99" (108.152219)
NAD 27 (SURFACE LOCATION)	NAD 27 (TARGET BOTTOM HOLE)
LATITUDE = 39°38'51.58" (39.647661)	LATITUDE = 39°38'55.76" (39.648824)
LONGITUDE = 108°08'51.08" (108.147521)	LONGITUDE = 108°09'05.70" (108.151583)
UTM NAD 27 (ZONE 12)	UTM NAD 27 (ZONE 12)
N: 14410510.00 E: 2443429.79	N: 14410896.94 E: 2442272.90

REV: 1 12-03-18 M.D. (TGI AND BHL MOVES)

BASIS OF BEARINGS
BASIS OF BEARINGS IS A G.P.S. OBSERVATION

BASIS OF ELEVATION
BENCH MARK (H79) LOCATED IN THE NE 1/4 OF SECTION 35, T4S, R98W, 6th P.M., TAKEN FROM THE BULL FORK, QUADRANGLE, COLORADO, 7.5 MINUTE SERIES (TOPOGRAPHIC MAP) PUBLISHED BY THE UNITED STATES DEPARTMENT OF THE INTERIOR, GEOLOGICAL SURVEY. SAID ELEVATION IS MARKED AS BEING 8535 FEET.

UELS, LLC
Corporate Office * 85 South 200 East
Vernal, UT 84078 * (435) 789-1017

UINTAH
ENGINEERING & LAND SURVEYING

Caerus Oil & Gas LLC

NPR 22A-3 596
SE 1/4 NE 1/4, SECTION 3, T5S, R96W, 6th P.M.
GARFIELD COUNTY, COLORADO

SURVEYED BY	BART HUNTING, C.R.	03-01-18	SCALE
DRAWN BY	M.D.	05-18-18	1" = 1000'

WELL LOCATION PLAT