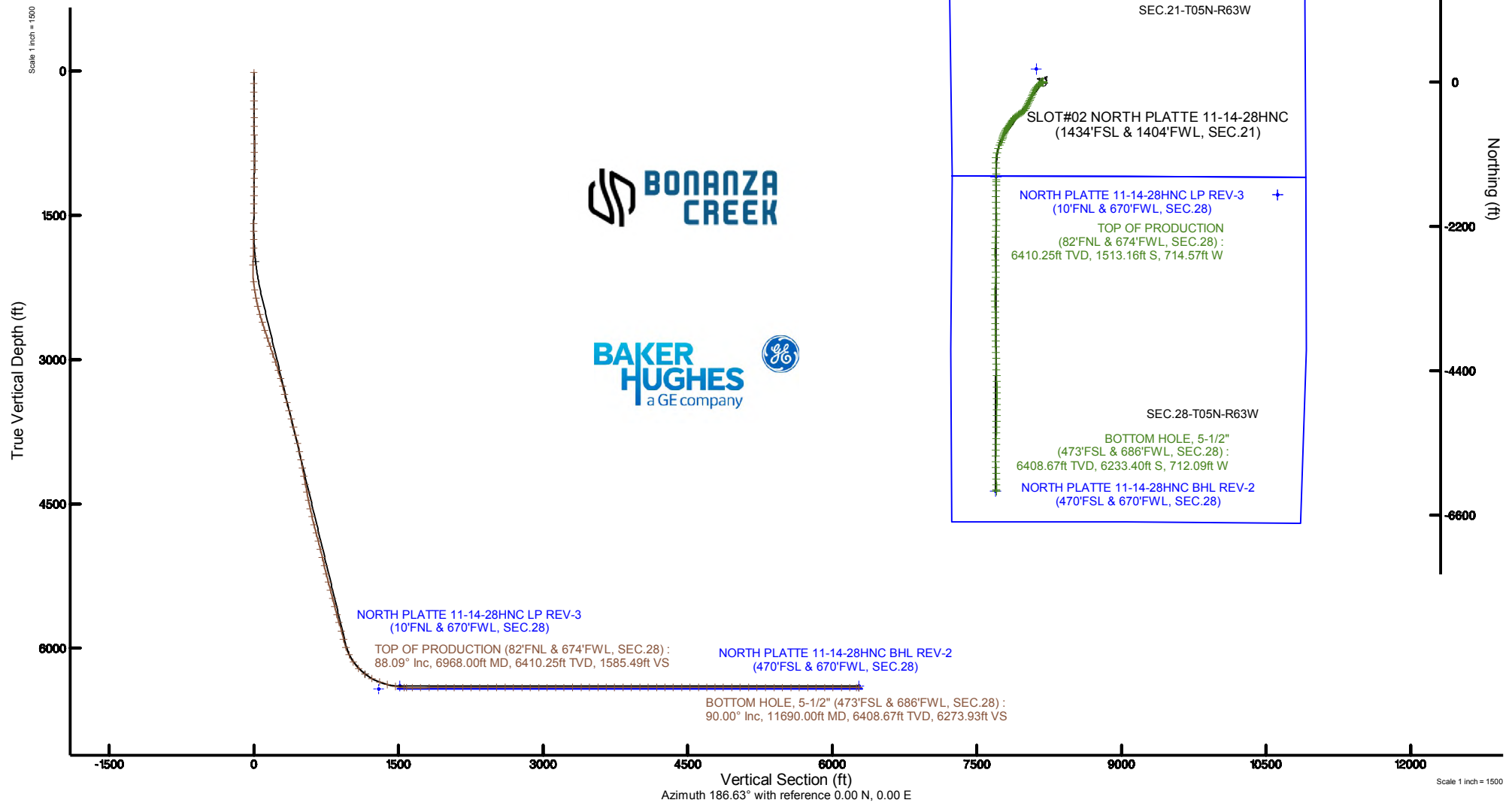


BONANZA CREEK OIL COMPANY

Location:	COLORADO	Slot:	SLOT#02 NORTH PLATTE 11-14-28HNC (1434'FSL & 1404'FWL, SEC.21)
Field:	WELD COUNTY	Well:	NORTH PLATTE 11-14-28HNC
Facility:	SEC.21-T05N-R63W	Wellbore:	NORTH PLATTE 11-14-28HNC PWB
Plot reference wellpath is NORTH PLATTE 11-14-28HNC (REV-E.0) PWP			
True vertical depths are referenced to RIG (17KB) (RKB)		Grid System: NAD83 / Lambert Colorado SP, Northern Zone (501), US feet	
Measured depths are referenced to RIG (17KB) (RKB)		North Reference: True north	
RIG (17KB) (RKB) to Mean Sea Level: 4570 feet		Scale: True distance	
Mean Sea Level to Ground level (At Slot: SLOT#02 NORTH PLATTE 11-14-28HNC (1434'FSL & 1404'FWL, SEC.21)): 0 feet		Depths are in feet	
Coordinates are in feet referenced to Slot		Created by: bushjanh on 2018-11-26	
		Database: Denver	





Actual Wellpath Report

NORTH PLATTE 11-14-24HNC AWP

Page 1 of 8



REFERENCE WELLPATH IDENTIFICATION			
Operator	BONANZA CREEK OIL COMPANY	Slot	SLOT#02 NORTH PLATTE 11-14-28HNC (1434'FSL & 1404'FWL, SEC.21)
Area	COLORADO	Well	NORTH PLATTE 11-14-28HNC
Field	WELD COUNTY	Wellbore	NORTH PLATTE 11-14-28HNC AWB
Facility	SEC.21-T05N-R63W		

REPORT SETUP INFORMATION			
Projection System	NAD83 / Lambert Colorado SP, Northern Zone (501), US feet	Software System	WellArchitect® 5.1
North Reference	True	User	Bushjamh
Scale	0.999959	Report Generated	11/26/2018 at 1:04:58 PM
Convergence at slot	0.68° East	Database/Source file	Denver/NORTH_PLATTE_11-14-28HNC_AWP.xml

WELLPATH LOCATION						
	Local coordinates		Grid coordinates		Geographic coordinates	
	North[ft]	East[ft]	Easting[US ft]	Northing[US ft]	Latitude	Longitude
Slot Location	-3.28	19.50	3293770.83	1383631.10	40°22'54.026"N	104°26'43.681"W
Facility Reference Pt			3293751.29	1383634.15	40°22'54.059"N	104°26'43.933"W
Field Reference Pt			3224525.77	1254425.87	40°01'44.400"N	104°41'53.556"W

WELLPATH DATUM			
Calculation method	Minimum curvature	RIG (17'KB) (RKB) to Facility Vertical Datum	4570.00ft
Horizontal Reference Pt	Slot	RIG (17'KB) (RKB) to Mean Sea Level	4570.00ft
Vertical Reference Pt	RIG (17'KB) (RKB)	RIG (17'KB) (RKB) to Ground Level at Slot (SLOT#02 NORTH PLATTE 11-14-28HNC (1434'FSL & 1404'FWL, SEC.21))	4570.00ft
MD Reference Pt	RIG (17'KB) (RKB)	Section Origin	N 0.00, E 0.00 ft
Field Vertical Reference	Mean Sea Level	Section Azimuth	186.63°



Actual Wellpath Report

NORTH PLATTE 11-14-24HNC AWP

Page 2 of 8



REFERENCE WELLPATH IDENTIFICATION

Operator	BONANZA CREEK OIL COMPANY	Slot	SLOT#02 NORTH PLATTE 11-14-28HNC (1434'FSL & 1404'FWL, SEC.21)
Area	COLORADO	Well	NORTH PLATTE 11-14-28HNC
Field	WELD COUNTY	Wellbore	NORTH PLATTE 11-14-28HNC AWB
Facility	SEC.21-T05N-R63W		

WELLPATH DATA (135 stations) † = interpolated/extrapolated station

MD [ft]	Inclination [°]	Azimuth [°]	TVD [ft]	Vert Sect [ft]	North [ft]	East [ft]	Latitude	Longitude	DLS [°/100ft]	Comments
0.00†	0.000	41.590	0.00	0.00	0.00	0.00	40°22'54.026"N	104°26'43.681"W	0.00	
17.00	0.000	41.590	17.00	0.00	0.00	0.00	40°22'54.026"N	104°26'43.681"W	0.00	
131.00	0.140	41.590	131.00	-0.11	0.10	0.09	40°22'54.027"N	104°26'43.680"W	0.12	
219.00	0.580	177.890	219.00	0.24	-0.26	0.18	40°22'54.024"N	104°26'43.679"W	0.78	
309.00	0.400	239.910	309.00	0.88	-0.87	-0.07	40°22'54.018"N	104°26'43.682"W	0.59	
396.00	0.530	218.720	395.99	1.40	-1.34	-0.59	40°22'54.013"N	104°26'43.689"W	0.25	
486.00	0.550	209.570	485.99	2.15	-2.04	-1.06	40°22'54.006"N	104°26'43.695"W	0.10	
575.00	0.540	140.170	574.99	2.83	-2.73	-1.01	40°22'53.999"N	104°26'43.694"W	0.70	
665.00	0.640	222.170	664.98	3.53	-3.43	-1.07	40°22'53.992"N	104°26'43.695"W	0.86	
755.00	0.580	250.240	754.98	4.14	-3.96	-1.84	40°22'53.987"N	104°26'43.705"W	0.34	
843.00	0.600	232.560	842.97	4.66	-4.39	-2.62	40°22'53.983"N	104°26'43.715"W	0.21	
934.00	0.270	1.600	933.97	4.78	-4.46	-2.99	40°22'53.982"N	104°26'43.720"W	0.88	
1023.00	0.530	2.270	1022.97	4.16	-3.84	-2.97	40°22'53.988"N	104°26'43.720"W	0.29	
1114.00	0.710	1.740	1113.96	3.18	-2.86	-2.94	40°22'53.998"N	104°26'43.719"W	0.20	
1206.00	0.610	347.340	1205.96	2.15	-1.81	-3.03	40°22'54.008"N	104°26'43.720"W	0.21	
1295.00	0.680	356.600	1294.95	1.18	-0.82	-3.16	40°22'54.018"N	104°26'43.722"W	0.14	
1383.00	0.410	34.690	1382.95	0.39	-0.04	-3.02	40°22'54.026"N	104°26'43.720"W	0.50	
1474.00	0.850	346.960	1473.94	-0.53	0.88	-2.98	40°22'54.035"N	104°26'43.720"W	0.71	
1588.00	0.590	347.260	1587.93	-1.88	2.28	-3.30	40°22'54.049"N	104°26'43.724"W	0.23	
1665.00	0.870	28.730	1664.93	-2.80	3.18	-3.11	40°22'54.058"N	104°26'43.721"W	0.75	
1753.00	1.380	253.300	1752.92	-3.00	3.46	-3.80	40°22'54.061"N	104°26'43.730"W	2.38	
1840.00	0.780	158.690	1839.91	-2.06	2.61	-4.59	40°22'54.052"N	104°26'43.741"W	1.88	
1927.00	4.530	21.780	1926.83	-4.86	5.25	-3.10	40°22'54.078"N	104°26'43.721"W	5.89	
2016.00	2.770	335.970	2015.66	-10.10	10.48	-2.67	40°22'54.130"N	104°26'43.716"W	3.67	
2190.00	9.160	228.150	2188.92	-3.33	5.06	-14.73	40°22'54.076"N	104°26'43.872"W	5.95	
2277.00	12.600	232.720	2274.35	8.44	-5.31	-27.45	40°22'53.974"N	104°26'44.036"W	4.07	
2366.00	14.370	231.130	2360.89	23.05	-18.12	-43.77	40°22'53.847"N	104°26'44.247"W	2.03	
2453.00	17.240	228.820	2444.59	40.30	-33.39	-61.88	40°22'53.696"N	104°26'44.481"W	3.38	
2542.00	20.860	225.680	2528.71	62.39	-53.15	-83.15	40°22'53.501"N	104°26'44.756"W	4.23	
2630.00	19.680	218.020	2611.27	87.21	-75.77	-103.49	40°22'53.278"N	104°26'45.019"W	3.30	



Actual Wellpath Report

NORTH PLATTE 11-14-24HNC AWP

Page 3 of 8



REFERENCE WELLPATH IDENTIFICATION

Operator	BONANZA CREEK OIL COMPANY	Slot	SLOT#02 NORTH PLATTE 11-14-28HNC (1434'FSL & 1404'FWL, SEC.21)
Area	COLORADO	Well	NORTH PLATTE 11-14-28HNC
Field	WELD COUNTY	Wellbore	NORTH PLATTE 11-14-28HNC AWB
Facility	SEC.21-T05N-R63W		

WELLPATH DATA (135 stations)

MD [ft]	Inclination [°]	Azimuth [°]	TVD [ft]	Vert Sect [ft]	North [ft]	East [ft]	Latitude	Longitude	DLS [°/100ft]	Comments
2718.00	19.750	212.190	2694.12	113.27	-100.03	-120.54	40°22'53.038"N	104°26'45.239"W	2.24	
2806.00	19.850	207.810	2776.92	140.62	-125.83	-135.44	40°22'52.783"N	104°26'45.431"W	1.69	
2895.00	19.460	204.020	2860.74	168.85	-152.74	-148.52	40°22'52.517"N	104°26'45.600"W	1.50	
2982.00	19.040	202.540	2942.87	196.33	-179.08	-159.86	40°22'52.257"N	104°26'45.747"W	0.74	
3071.00	19.340	202.620	3026.93	224.46	-206.10	-171.09	40°22'51.990"N	104°26'45.892"W	0.34	
3159.00	18.050	206.860	3110.29	251.26	-231.71	-182.86	40°22'51.737"N	104°26'46.044"W	2.13	
3248.00	17.280	205.680	3195.09	276.69	-255.93	-194.82	40°22'51.497"N	104°26'46.199"W	0.95	
3334.00	14.460	207.950	3277.81	298.77	-276.93	-205.39	40°22'51.290"N	104°26'46.335"W	3.36	
3423.00	15.960	211.530	3363.69	320.22	-297.17	-216.99	40°22'51.090"N	104°26'46.485"W	1.99	
3511.00	15.590	208.000	3448.38	342.21	-317.93	-228.87	40°22'50.885"N	104°26'46.639"W	1.17	
3599.00	15.900	204.410	3533.08	364.70	-339.34	-239.41	40°22'50.673"N	104°26'46.775"W	1.16	
3687.00	16.000	203.920	3617.69	387.76	-361.41	-249.30	40°22'50.455"N	104°26'46.903"W	0.19	
3775.00	15.320	204.700	3702.42	410.39	-383.06	-259.08	40°22'50.241"N	104°26'47.029"W	0.81	
3864.00	15.790	211.400	3788.17	432.56	-404.07	-270.30	40°22'50.033"N	104°26'47.174"W	2.09	
3952.00	15.840	216.630	3872.84	453.83	-423.93	-283.71	40°22'49.837"N	104°26'47.347"W	1.62	
4039.00	14.650	226.890	3956.79	472.52	-440.98	-298.83	40°22'49.669"N	104°26'47.543"W	3.38	
4127.00	15.840	237.550	4041.71	488.58	-455.04	-317.09	40°22'49.530"N	104°26'47.779"W	3.45	
4214.00	15.850	237.070	4125.41	503.63	-467.87	-337.08	40°22'49.403"N	104°26'48.037"W	0.15	
4302.00	15.540	236.540	4210.13	518.88	-480.90	-357.00	40°22'49.274"N	104°26'48.294"W	0.39	
4390.00	15.770	233.940	4294.86	534.57	-494.44	-376.50	40°22'49.141"N	104°26'48.546"W	0.84	
4477.00	15.690	235.380	4378.60	550.34	-508.08	-395.74	40°22'49.006"N	104°26'48.795"W	0.46	
4566.00	16.120	232.360	4464.20	566.90	-522.46	-415.43	40°22'48.864"N	104°26'49.049"W	1.05	
4655.00	16.010	227.450	4549.73	584.81	-538.31	-434.26	40°22'48.707"N	104°26'49.292"W	1.53	
4742.00	16.140	222.540	4633.33	603.69	-555.33	-451.27	40°22'48.539"N	104°26'49.512"W	1.57	
4831.00	16.150	217.020	4718.82	624.38	-574.33	-467.09	40°22'48.351"N	104°26'49.717"W	1.72	
4919.00	15.890	210.490	4803.41	645.96	-594.48	-480.57	40°22'48.152"N	104°26'49.891"W	2.07	
5008.00	15.580	210.810	4889.08	668.00	-615.25	-492.87	40°22'47.947"N	104°26'50.050"W	0.36	
5096.00	15.030	213.780	4973.96	688.94	-634.88	-505.27	40°22'47.753"N	104°26'50.210"W	1.09	
5183.00	15.930	213.590	5057.80	709.62	-654.20	-518.15	40°22'47.562"N	104°26'50.376"W	1.04	
5270.00	15.360	213.770	5141.58	730.51	-673.73	-531.16	40°22'47.369"N	104°26'50.545"W	0.66	



Actual Wellpath Report

NORTH PLATTE 11-14-24HNC AWP

Page 4 of 8



REFERENCE WELLPATH IDENTIFICATION

Operator	BONANZA CREEK OIL COMPANY	Slot	SLOT#02 NORTH PLATTE 11-14-28HNC (1434'FSL & 1404'FWL, SEC.21)
Area	COLORADO	Well	NORTH PLATTE 11-14-28HNC
Field	WELD COUNTY	Wellbore	NORTH PLATTE 11-14-28HNC AWB
Facility	SEC.21-T05N-R63W		

WELLPATH DATA (135 stations) † = interpolated/extrapolated station

MD [ft]	Inclination [°]	Azimuth [°]	TVD [ft]	Vert Sect [ft]	North [ft]	East [ft]	Latitude	Longitude	DLS [°/100ft]	Comments
5358.00	15.260	216.880	5226.46	750.89	-692.68	-544.59	40°22'47.181"N	104°26'50.718"W	0.94	
5446.00	16.230	218.030	5311.15	771.39	-711.63	-559.11	40°22'46.994"N	104°26'50.906"W	1.16	
5534.00	16.090	210.290	5395.69	793.05	-731.85	-572.84	40°22'46.794"N	104°26'51.083"W	2.45	
5622.00	15.660	205.320	5480.33	815.47	-753.12	-584.07	40°22'46.584"N	104°26'51.228"W	1.62	
5711.00	15.060	202.450	5566.16	837.98	-774.66	-593.63	40°22'46.371"N	104°26'51.352"W	1.09	
5798.00	15.790	199.210	5650.02	860.40	-796.29	-601.84	40°22'46.158"N	104°26'51.458"W	1.30	
5886.00	16.050	195.380	5734.65	884.11	-819.32	-609.00	40°22'45.930"N	104°26'51.550"W	1.23	
5975.00	15.240	193.510	5820.35	907.89	-842.56	-615.00	40°22'45.700"N	104°26'51.628"W	1.07	
6063.00	14.020	198.640	5905.50	929.80	-863.91	-621.11	40°22'45.489"N	104°26'51.707"W	2.02	
6152.00	19.920	203.900	5990.59	954.84	-888.01	-630.71	40°22'45.251"N	104°26'51.831"W	6.84	
6238.00	26.830	204.430	6069.49	987.35	-919.11	-644.69	40°22'44.944"N	104°26'52.011"W	8.04	
6325.00	35.880	204.140	6143.70	1030.45	-960.34	-663.27	40°22'44.537"N	104°26'52.252"W	10.40	
6413.00	44.990	199.350	6210.63	1085.51	-1013.34	-684.17	40°22'44.013"N	104°26'52.522"W	10.93	
6501.00	53.100	195.250	6268.28	1150.77	-1076.76	-703.77	40°22'43.386"N	104°26'52.775"W	9.86	
6589.00	61.760	187.070	6315.66	1224.55	-1149.40	-717.84	40°22'42.668"N	104°26'52.957"W	12.57	
6677.00	70.450	178.110	6351.33	1304.60	-1229.60	-721.26	40°22'41.876"N	104°26'53.001"W	13.56	
6763.00	74.320	176.960	6377.36	1385.52	-1311.48	-717.72	40°22'41.067"N	104°26'52.955"W	4.68	
6851.00	78.660	179.110	6397.91	1470.11	-1396.96	-714.81	40°22'40.222"N	104°26'52.917"W	5.47	
6940.00	86.960	180.310	6409.04	1557.69	-1485.18	-714.37	40°22'39.350"N	104°26'52.912"W	9.42	
6968.00†	88.090	180.502	6410.25	1585.49	-1513.16	-714.57	40°22'39.074"N	104°26'52.914"W	4.09	TOP OF PRODUCTION (82'FNL & 674'FWL, SEC.28)
7026.00	90.430	180.900	6411.00	1643.18	-1571.14	-715.28	40°22'38.501"N	104°26'52.923"W	4.09	
7113.00	90.250	181.700	6410.48	1729.80	-1658.12	-717.25	40°22'37.641"N	104°26'52.949"W	0.94	
7202.00	90.150	180.410	6410.17	1818.38	-1747.10	-718.89	40°22'36.762"N	104°26'52.970"W	1.45	
7290.00	90.220	178.770	6409.89	1905.71	-1835.10	-718.26	40°22'35.892"N	104°26'52.962"W	1.87	
7378.00	90.340	178.100	6409.46	1992.81	-1923.06	-715.86	40°22'35.023"N	104°26'52.931"W	0.77	
7465.00	90.030	178.380	6409.18	2078.88	-2010.02	-713.18	40°22'34.164"N	104°26'52.896"W	0.48	
7554.00	90.150	179.970	6409.04	2167.13	-2099.01	-711.90	40°22'33.285"N	104°26'52.880"W	1.79	
7641.00	90.250	183.460	6408.73	2253.79	-2185.96	-714.51	40°22'32.425"N	104°26'52.913"W	4.01	
7728.00	90.060	182.700	6408.50	2340.62	-2272.83	-719.18	40°22'31.567"N	104°26'52.973"W	0.90	
7817.00	90.180	182.480	6408.31	2429.40	-2361.74	-723.20	40°22'30.688"N	104°26'53.025"W	0.28	



Actual Wellpath Report

NORTH PLATTE 11-14-24HNC AWP

Page 5 of 8



REFERENCE WELLPATH IDENTIFICATION

Operator	BONANZA CREEK OIL COMPANY	Slot	SLOT#02 NORTH PLATTE 11-14-28HNC (1434'FSL & 1404'FWL, SEC.21)
Area	COLORADO	Well	NORTH PLATTE 11-14-28HNC
Field	WELD COUNTY	Wellbore	NORTH PLATTE 11-14-28HNC AWP
Facility	SEC.21-T05N-R63W		

WELLPATH DATA (135 stations)

MD [ft]	Inclination [°]	Azimuth [°]	TVD [ft]	Vert Sect [ft]	North [ft]	East [ft]	Latitude	Longitude	DLS [°/100ft]	Comments
7905.00	90.180	182.030	6408.04	2517.15	-2449.67	-726.66	40°22'29.819"N	104°26'53.070"W	0.51	
7994.00	89.880	181.280	6407.99	2605.81	-2538.63	-729.23	40°22'28.940"N	104°26'53.103"W	0.91	
8083.00	90.000	179.410	6408.08	2694.27	-2627.62	-729.77	40°22'28.061"N	104°26'53.110"W	2.11	
8171.00	89.910	178.020	6408.15	2781.43	-2715.60	-727.80	40°22'27.192"N	104°26'53.085"W	1.58	
8259.00	89.850	177.670	6408.34	2868.40	-2803.54	-724.49	40°22'26.323"N	104°26'53.042"W	0.40	
8348.00	90.030	178.300	6408.43	2956.39	-2892.48	-721.36	40°22'25.444"N	104°26'53.001"W	0.74	
8435.00	90.120	181.490	6408.32	3042.78	-2979.47	-721.20	40°22'24.584"N	104°26'52.999"W	3.67	
8523.00	90.090	183.880	6408.15	3130.57	-3067.37	-725.32	40°22'23.716"N	104°26'53.053"W	2.72	
8610.00	90.030	184.620	6408.06	3217.49	-3154.13	-731.77	40°22'22.858"N	104°26'53.136"W	0.85	
8699.00	90.030	179.430	6408.02	3306.17	-3243.04	-734.91	40°22'21.980"N	104°26'53.176"W	5.83	
8788.00	90.150	177.960	6407.88	3394.32	-3332.02	-732.89	40°22'21.100"N	104°26'53.150"W	1.66	
8876.00	89.940	178.580	6407.81	3481.39	-3419.98	-730.23	40°22'20.231"N	104°26'53.116"W	0.74	
8964.00	90.000	179.020	6407.85	3568.57	-3507.96	-728.39	40°22'19.362"N	104°26'53.092"W	0.50	
9051.00	90.060	179.300	6407.81	3654.83	-3594.95	-727.11	40°22'18.502"N	104°26'53.075"W	0.33	
9139.00	90.060	179.780	6407.72	3742.16	-3682.94	-726.40	40°22'17.633"N	104°26'53.066"W	0.55	
9227.00	90.150	179.950	6407.55	3829.55	-3770.94	-726.20	40°22'16.763"N	104°26'53.064"W	0.22	
9314.00	89.850	178.970	6407.55	3915.86	-3857.94	-725.38	40°22'15.903"N	104°26'53.053"W	1.18	
9403.00	89.940	178.760	6407.72	4004.05	-3946.92	-723.61	40°22'15.024"N	104°26'53.030"W	0.26	
9491.00	90.030	178.650	6407.74	4091.21	-4034.90	-721.63	40°22'14.155"N	104°26'53.004"W	0.16	
9578.00	89.789	178.220	6407.88	4177.32	-4121.87	-719.25	40°22'13.295"N	104°26'52.974"W	0.57	
9665.00	90.120	178.490	6407.95	4263.42	-4208.83	-716.75	40°22'12.436"N	104°26'52.941"W	0.49	
9753.00	89.970	178.550	6407.88	4350.54	-4296.80	-714.48	40°22'11.567"N	104°26'52.912"W	0.18	
9841.00	89.970	178.260	6407.92	4437.63	-4384.77	-712.03	40°22'10.697"N	104°26'52.880"W	0.33	
9929.00	89.970	178.230	6407.97	4524.69	-4472.72	-709.33	40°22'09.828"N	104°26'52.845"W	0.03	
10017.00	90.180	178.910	6407.85	4611.83	-4560.70	-707.14	40°22'08.959"N	104°26'52.817"W	0.81	
10104.00	90.000	179.370	6407.72	4698.08	-4647.69	-705.83	40°22'08.099"N	104°26'52.800"W	0.57	
10192.00	90.030	179.930	6407.69	4785.43	-4735.68	-705.30	40°22'07.230"N	104°26'52.793"W	0.64	
10278.00	90.060	180.290	6407.63	4870.88	-4821.68	-705.46	40°22'06.380"N	104°26'52.795"W	0.42	
10366.00	90.060	181.090	6407.54	4958.40	-4909.68	-706.52	40°22'05.510"N	104°26'52.809"W	0.91	
10453.00	90.000	180.770	6407.49	5044.97	-4996.66	-707.93	40°22'04.651"N	104°26'52.827"W	0.37	



Actual Wellpath Report

NORTH PLATTE 11-14-24HNC AWP

Page 6 of 8



REFERENCE WELLPATH IDENTIFICATION

Operator	BONANZA CREEK OIL COMPANY	Slot	SLOT#02 NORTH PLATTE 11-14-28HNC (1434'FSL & 1404'FWL, SEC.21)
Area	COLORADO	Well	NORTH PLATTE 11-14-28HNC
Field	WELD COUNTY	Wellbore	NORTH PLATTE 11-14-28HNC AWB
Facility	SEC.21-T05N-R63W		

WELLPATH DATA (135 stations)

MD [ft]	Inclination [°]	Azimuth [°]	TVD [ft]	Vert Sect [ft]	North [ft]	East [ft]	Latitude	Longitude	DLS [°/100ft]	Comments
10541.00	89.690	180.850	6407.73	5132.52	-5084.66	-709.18	40°22'03.781"N	104°26'52.843"W	0.36	
10628.00	89.880	180.880	6408.05	5219.08	-5171.65	-710.49	40°22'02.922"N	104°26'52.860"W	0.22	
10717.00	89.820	181.120	6408.29	5307.65	-5260.63	-712.04	40°22'02.042"N	104°26'52.880"W	0.28	
10805.00	89.780	180.810	6408.59	5395.22	-5348.62	-713.52	40°22'01.173"N	104°26'52.899"W	0.36	
10893.00	89.780	180.810	6408.93	5482.77	-5436.61	-714.77	40°22'00.303"N	104°26'52.915"W	0.00	
10981.00	89.750	181.620	6409.29	5570.38	-5524.59	-716.63	40°21'59.434"N	104°26'52.939"W	0.92	
11069.00	89.790	181.540	6409.65	5658.03	-5612.55	-719.06	40°21'58.565"N	104°26'52.971"W	0.10	
11157.00	90.310	181.270	6409.57	5745.67	-5700.53	-721.22	40°21'57.695"N	104°26'52.999"W	0.67	
11245.00	90.370	179.430	6409.05	5833.14	-5788.52	-721.76	40°21'56.826"N	104°26'53.005"W	2.09	
11333.00	90.060	178.260	6408.72	5920.32	-5876.50	-719.98	40°21'55.957"N	104°26'52.983"W	1.38	
11421.00	90.000	178.140	6408.67	6007.37	-5964.46	-717.22	40°21'55.087"N	104°26'52.947"W	0.15	
11510.00	90.000	179.000	6408.67	6095.50	-6053.43	-715.00	40°21'54.208"N	104°26'52.918"W	0.97	
11598.00	90.000	178.870	6408.67	6182.70	-6141.41	-713.36	40°21'53.339"N	104°26'52.897"W	0.15	
11665.00	90.000	179.400	6408.67	6249.13	-6208.40	-712.35	40°21'52.677"N	104°26'52.884"W	0.79	
11690.00	90.000	179.400	6408.67	6273.93	-6233.40	-712.09	40°21'52.430"N	104°26'52.880"W	0.00	BOTTOM HOLE, 5-1/2" (473'FSL & 686'FWL, SEC.28)



Actual Wellpath Report

NORTH PLATTE 11-14-24HNC AWP

Page 7 of 8



REFERENCE WELLPATH IDENTIFICATION

Operator	BONANZA CREEK OIL COMPANY	Slot	SLOT#02 NORTH PLATTE 11-14-28HNC (1434'FSL & 1404'FWL, SEC.21)
Area	COLORADO	Well	NORTH PLATTE 11-14-28HNC
Field	WELD COUNTY	Wellbore	NORTH PLATTE 11-14-28HNC AWB
Facility	SEC.21-T05N-R63W		

TARGETS

Name	TVD [ft]	North [ft]	East [ft]	Grid East [US ft]	Grid North [US ft]	Latitude	Longitude	Shape
SEC.21-T05N-R63W	-8.00	201.85	-105.85	3293662.59	1383831.67	40°22'56.021"N	104°26'45.049"W	polygon
SEC.28-T05N-R63W	-8.00	-1717.81	3567.94	3297358.79	1381955.91	40°22'37.049"N	104°25'57.580"W	polygon
NORTH PLATTE 11-14-28HNC BHL REV-2 (470'FSL & 670'FWL, SEC.28)	6393.00	-6235.91	-724.29	3293120.78	1377387.29	40°21'52.405"N	104°26'53.038"W	point
NORTH PLATTE 11-14-28HNC LP REV-3 (10'FNL & 670'FWL, SEC.28)	6393.00	-1441.18	-716.87	3293071.18	1382181.56	40°22'39.785"N	104°26'52.944"W	point
SEC.28-T05N-R63W 460'SETBACKS	6425.00	-1717.81	3567.94	3297358.79	1381955.91	40°22'37.049"N	104°25'57.580"W	polygon

WELLPATH COMPOSITION - Ref Wellbore: NORTH PLATTE 11-14-24HNC AWB Ref Wellpath: NORTH PLATTE 11-14-24HNC AWP

Start MD [ft]	End MD [ft]	Positional Uncertainty Model	Log Name/Comment	Wellbore
17.00	1588.00	BHI NaviTrak (Standard)	SURFACE HOLE SURVEYS <131-1588>	NORTH PLATTE 11-14-28HNC AWB
1588.00	11665.00	BHI AutoTrak Curve (Axial Corr, Short spacing)	BHI ATC 8 1/2" MONOBORE SURVEYS <1665-11665>	NORTH PLATTE 11-14-28HNC AWB
11665.00	11690.00	Blind Drilling (std)	Projection to bit	NORTH PLATTE 11-14-28HNC AWB



Actual Wellpath Report

NORTH PLATTE 11-14-24HNC AWP

Page 8 of 8



REFERENCE WELLPATH IDENTIFICATION

Operator	BONANZA CREEK OIL COMPANY	Slot	SLOT#02 NORTH PLATTE 11-14-28HNC (1434'FSL & 1404'FWL, SEC.21)
Area	COLORADO	Well	NORTH PLATTE 11-14-28HNC
Field	WELD COUNTY	Wellbore	NORTH PLATTE 11-14-28HNC AWB
Facility	SEC.21-T05N-R63W		

WELLPATH COMMENTS

MD [ft]	Inclination [°]	Azimuth [°]	TVD [ft]	Comment
6968.00	88.090	180.502	6410.25	TOP OF PRODUCTION (82'FNL & 674'FWL, SEC.28)
11690.00	90.000	179.400	6408.67	BOTTOM HOLE, 5-1/2" (473'FSL & 686'FWL, SEC.28)