

PATINA OIL & GAS CORPORATION



02496540

Cade State O 36-20
SENW 36-4N-67W
2475' FNL & 1470' FWL
Weld County, Colorado
CODELL NEW DRILL
4/1/2005

RECEIVED

APR -5 05

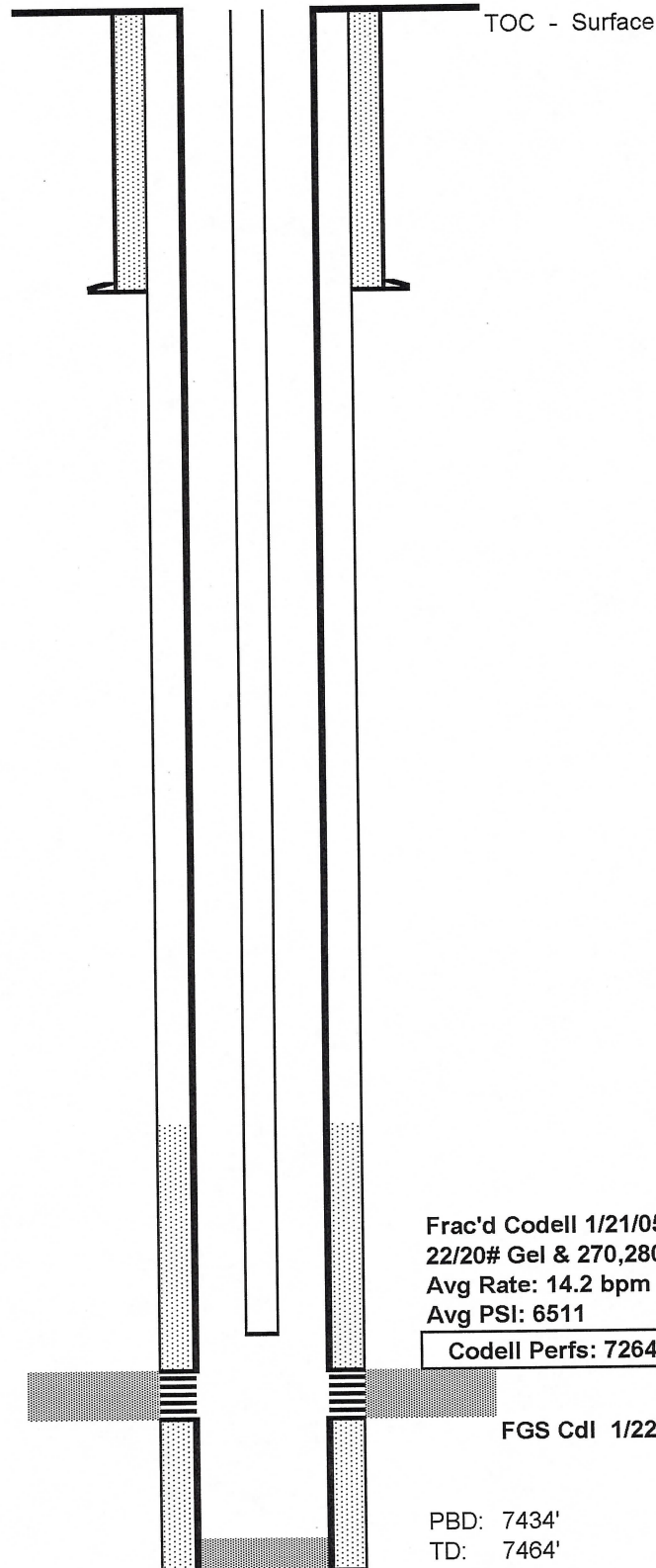
COGCC

API: 05-123-22604

GL Elev: 4769'

KB Elev: 4779'

Spud: 12/27/2004



Surface Casing :

8 5/8" 24# @ 454'

Cement: 175 sx (12/28/04)

Tubing:

2-3/8" 4.7# @ 7248' (203 jts)

1/12/2005

Production Casing :

4-1/2" 11.6# @ 7450'

Cement: 160 sx (12/31/04)