



Bonanza Creek Energy

North Platte F-J-28HNC

05-123-47012

Production

09/22/2018

Quote #: 18539

Execution #: 11316



Bonanza Creek Energy

Attention: Mr. Adam Conry | (303) 883-3351 | AConry@bonanzacrk.com

Bonanza Creek Energy | 410 17th St Suite 1400 | Denver, CO. 80202

Dear Mr. Conry,

Thank you for the opportunity to provide cementing services on this well. BJ Services strives to achieve complete customer satisfaction. If you have any questions regarding the services or data provided, please contact BJ Services at any time.

Sincerely,
Jason Creel
Field Engineer I | (307) 256-0306 | Jason.Creel@bjservices.com

Field Office
1716 East Allison Rd., Cheyenne WY, 82007
Phone: (307) 638-5585

Sales Office
999 18th St. Suite 1200 Denver, CO 80202
Phone: (281) 408-2361

Cementing Treatment



Start Date	9/22/2018	Field Ticket#	FT-11316-Q0P2C80201-919620664
End Date	9/22/2018	Well	NORTH PLATTE F-J-28HNC
Client	BONANZA CREEK ENERGY	API#	05-123-47012
Service Sup.	Zachary Hyde	County	WELD
District	Cheyenne, WY	State/Province	CO
Type of Job	Long String	Formation	NIOBRARA
Execution ID	EXC-11316-Q0P2C802		
Project ID	PRJ1011002		

WELL GEOMETRY

Type	ID (in)	OD (in)	Wt. (lb/ft)	MD (ft)	TVD (ft)	Excess(%)
Previous Casing	8.92	9.63	36.00	1,650.00	1,650.00	
Open Hole	8.50	0.00	0.00	11,610.00	6,358.00	12.50
Casing	4.89	5.50	17.00	11,600.00	6,358.00	

Shoe Length (ft): 42.00

HARDWARE

Bottom Plug Used?	No	Centralizers Type	Bow
Top Plug Used?	Yes	Landing Collar Depth (ft)	11,538
Top Plug Provided By	Non BJ	Pipe Movement	None
Top Plug Size	5.500	Job Pumped Through	No Manifold
Centralizers Used	Yes	Top Connection Thread	LTC
Centralizers Quantity	110.00	Top Connection Size	5.5

Cementing Treatment



CIRCULATION PRIOR TO JOB

Well Circulated By	Rig	Solids Present at End of Circulation	No
Circulation Prior to Job	No	10 sec SGS	7.00
Circulation Time (min)	120.00	10 min SGS	10.00
Circulation Rate (bpm)	8.00	30 min SGS	12.00
Circulation Volume (bbls)	960.00	Flare Prior to/during the Cement Job	No
Lost Circulation Prior to Cement Job	No	Gas Present	No
Mud Density In (ppg)	9.50		
Mud Density Out (ppg)	9.50		
PV Mud In	13		
PV Mud Out	13		
YP Mud In	7		
YP Mud Out	7		

TEMPERATURE

Ambient Temperature (°F)	75.00	Slurry Cement Temperature (°F)	70.00
Mix Water Temperature (°F)	70.00	Flow Line Temperature (°F)	140.00

BJ FLUID DETAILS

Fluid Type	Fluid Name	Density (ppg)	Yield (Cu Ft/sk)	H2O Req. (gals/sk)	Planned Top of Fluid (Ft)	Length (Ft)	Vol (sk)	Vol (Cu Ft)	Vol (bbls)
Spacer / Pre Flush / Flush	IntegraGuard EZ Spacer	12.0000			0.00				60.0000
Lead Slurry	BJCem P100.3.01C	12.5000	2.1538	12.23	0.00	5000	605	1,308.0000	232.8000
Tail Slurry	BJCem P50.6.02C	13.5000	1.4772	7.45	5,000.00	6580.13	1152	1,702.0000	303.0000
Displacement 2	Retarded Water	8.3337			13,244.00	0	0	0.0000	20.0000
Displacement Final	Displacement Final (Water)	8.3308			0.00			0.0000	248.3000

Cementing Treatment



Fluid Type	Fluid Name	Component	Concentration	UOM
Spacer / Pre Flush / Flush	IntegraGuard EZ Spacer	SPACER SURFACTANT, SS-267	0.5000	GPB
Spacer / Pre Flush / Flush	IntegraGuard EZ Spacer	EXTENDER, BENTONITE	5.0000	PPB
Spacer / Pre Flush / Flush	IntegraGuard EZ Spacer	SPACER SURFACTANT, SS-247	0.5000	GPB
Spacer / Pre Flush / Flush	IntegraGuard EZ Spacer	SAND, S-8, Silica Flour, 200 Mesh	242.2100	PPB
Spacer / Pre Flush / Flush	IntegraGuard EZ Spacer	GELLANT WATER, GW-86	1.0000	PPB
Lead Slurry	BJCem P100.3.01C	GELLANT WATER, GW-86	0.2000	BWOB
Lead Slurry	BJCem P100.3.01C	FOAM PREVENTER, FP-25	0.3000	BWOB
Lead Slurry	BJCem P100.3.01C	EXTENDER, BENTONITE	4.0000	BWOB
Lead Slurry	BJCem P100.3.01C	RETARDER, SR-20	0.4000	BWOB
Lead Slurry	BJCem P100.3.01C	CEMENT, ASTM TYPE III	100.0000	PCT
Lead Slurry	BJCem P100.3.01C	IntegraSeal CELLO	0.1300	LBS/SK
Lead Slurry	BJCem P100.3.01C	FLUID LOSS, FL-24	0.3000	BWOB
Lead Slurry	BJCem P100.3.01C	BONDING AGENT, BA-60	0.4000	BWOB
Tail Slurry	BJCem P50.6.02C	Flyash (Rockies)	50.0000	PCT
Tail Slurry	BJCem P50.6.02C	GELLANT WATER, GW-86	0.1000	BWOB
Tail Slurry	BJCem P50.6.02C	RETARDER, SR-20	0.0700	BWOB
Tail Slurry	BJCem P50.6.02C	CEMENT, CLASS G	50.0000	PCT
Tail Slurry	BJCem P50.6.02C	EXTENDER, BENTONITE	2.0000	BWOB
Tail Slurry	BJCem P50.6.02C	FOAM PREVENTER, FP-25	0.3000	BWOB
Tail Slurry	BJCem P50.6.02C	FLUID LOSS, FL-66	0.2000	BWOB
Displacement 2	Retarded Water	RETARDER, R-8L	0.5000	GPB
Displacement 2	Retarded Water	BIOCIDE, BIOC11139W	0.0100	GPB
Displacement Final	Displacement Final (Water)	BIOCIDE, BIOC11139W	0.0100	GPB

Cementing Treatment



DISPLACEMENT AND END OF JOB SUMMARY

Displaced By	BJ	Amount of Cement Returned/Reversed	50.00
Calculated Displacement Volume (bbls)	269.00	Method Used to Verify Returns	Visual
Actual Displacement Volume (bbls)	269.00	Amount of Spacer to Surface	60.00
Did Float Hold?	Yes	Pressure Left on Casing (psi)	0.00
Bump Plug	Yes	Amount Bled Back After Job	3.00
Bump Plug Pressure (psi)	2,100.00	Total Volume Pumped (bbls)	893.00
Were Returns Planned at Surface	Yes	Top Out Cement Spotted	No
Cement returns During Job	Full	Lost Circulation During Cement Job	No

EVENT LOG



Customer Name: BONANZA CREEK ENERGY
Well Name: NORTH PLATTE F-J-28HNC
Job Type: Long String
Quote ID: QUO-18539-B8K4K2
Plan ID: ORD-11316-Q0P2C8
Execution ID: EXC-11316-Q0P2C802
Fleets:

District: Cheyenne, WY
BJ Supervisor: Zachary Hyde

Seq.	Start Dt./Time	Event	Density (ppg)	Pump Rate (bpm)	Pump Vol(bbls)	Pipe Pressure(psi)	Comments
1	09/22/2018 00:29	Callout					Crew gets called out at 11:30, Requested time 530
2	09/22/2018 00:30	Arrive on Location					Crew arrives on location had to wait until rig was done running casing in order to rig up
3	09/22/2018 03:00	Rig Up					Crew rigs up iron and hoses needed for job
4	09/22/2018 07:00	Other (See comment)					Crew waits for rig to finish circulating
5	09/22/2018 07:40	Safety Meeting					Crew has a safety meeting with rig crew and company man discussing the job
6	09/22/2018 08:01	Prime Up	8.3300	3.00	3.00	150.00	Filled lines 3 bbls
7	09/22/2018 08:04	Pressure Test					Pressure tested to 5000 psi
8	09/22/2018 08:19	Pump Spacer	12.0000	4.00	20.00	150.00	Pumped 20 bbls of Spacer at 12 ppg with surfactants
9	09/22/2018 08:25	Pump Spacer	11.5000	4.00	20.00	150.00	Pumped 20 bbls of Spacer at 11.5 with surfactants

EVENT LOG



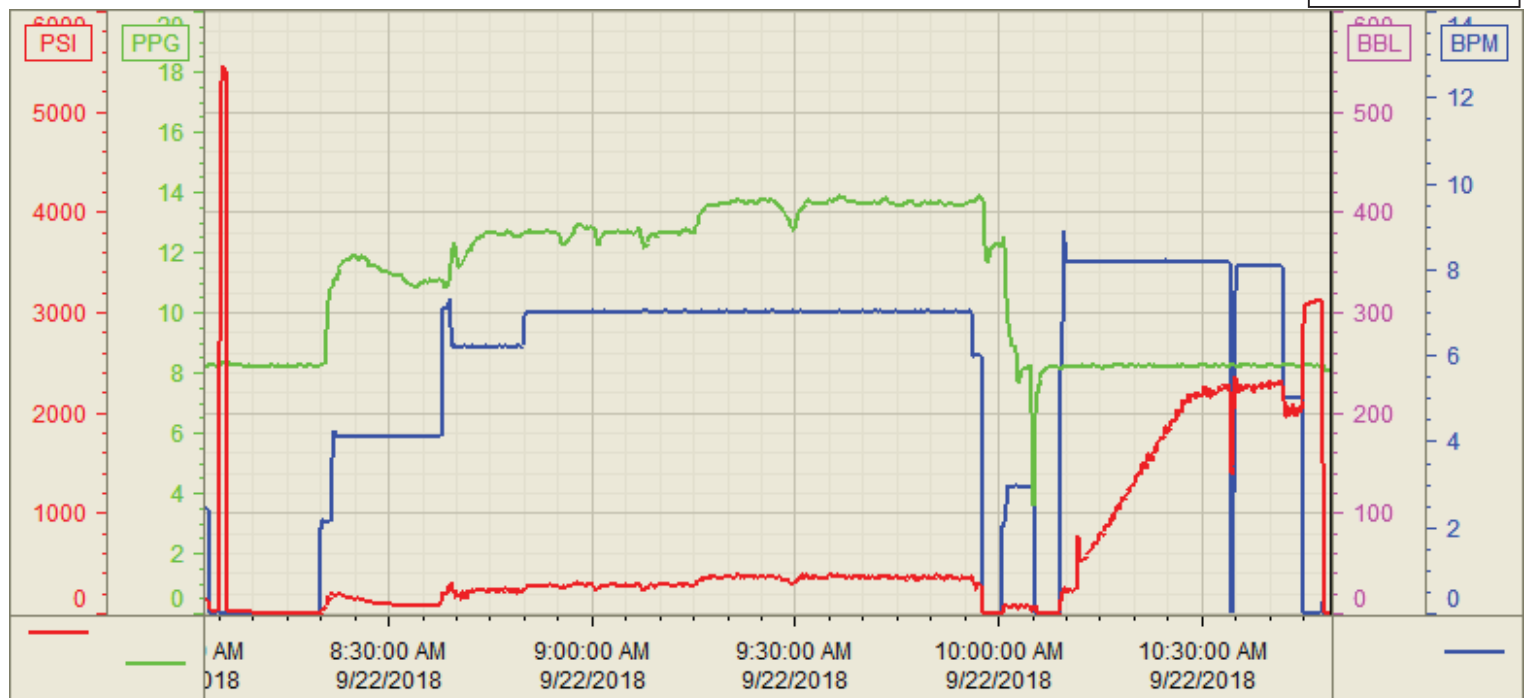
10	09/22/2018 08:30	Pump Spacer	11.0000	4.00	20.00	150.00	Pumped 20 bbls of Spacer at 11 ppg with surfactants
11	09/22/2018 08:37	Pump Lead Cement	12.5000	7.00	232.00	250.00	Pumped 232 bbls of Lead cement at 12.5 ppg(605sk, 2.15yld, 12.23Gal/sk)
12	09/22/2018 09:15	Pump Tail Cement	13.5000	7.00	303.00	300.00	Pumped 303 bbls of Tail cement at 13.5ppg(1152sk,1.47yld, 7.45 gal/sk)
13	09/22/2018 09:57	End Pumping					Shutdown
14	09/22/2018 09:58	Clean Pumps and Lines					Cleaned pump and lines to pit
15	09/22/2018 10:09	Drop Top Plug					Dropped latch down plug
16	09/22/2018 10:09	Pump Displacement	8.3300	8.00	249.00	1,900.00	Pumped 249 bbls of displacement at 8 bpm with 1900 psi. First 20 bbls had retarder and the rest had biocide
17	09/22/2018 10:42	Spacer Back to Surface					At 150 bbls away we had spacer come to surface
18	09/22/2018 10:42	Cement Back to Surface					At 210 away got cement to surface
19	09/22/2018 10:42	Other (See comment)	8.3300	5.00	20.00		Slow rate the last 20 bbls to 5 bpm to land the plug
20	09/22/2018 10:45	Land Plug					Landed plug went 1000 psi over FCP. FCP was 2100 psi brought it up to 3100
21	09/22/2018 10:47	Check Floats					Checked floats got 3 bbls back
22	09/22/2018 10:59	Rig Down					Crew rigs down iron and hoses

Customer: Bo Creek
Well Number: F-J-28HNC
Lease Info: North Platte



Print Date/Time

9/22/2018 11:17:08 AM



	Name	Y value	X value/time stamp	Tag name Y
1	DS - Press (PSI)	-5.4	9/22/2018 10:48:56 AM	Cementer\DS_DISCHARGE_PRESS_DIAL
2	DH - Density (PPG)	8.07	9/22/2018 10:49:02 AM	Cementer\DENSITY2_ACTUAL_RATE
3	Combined Rate	0.00	9/22/2018 10:49:02 AM	Cementer\Flow_Combined
4				
5				

Source: Control1 11:17:02 AM