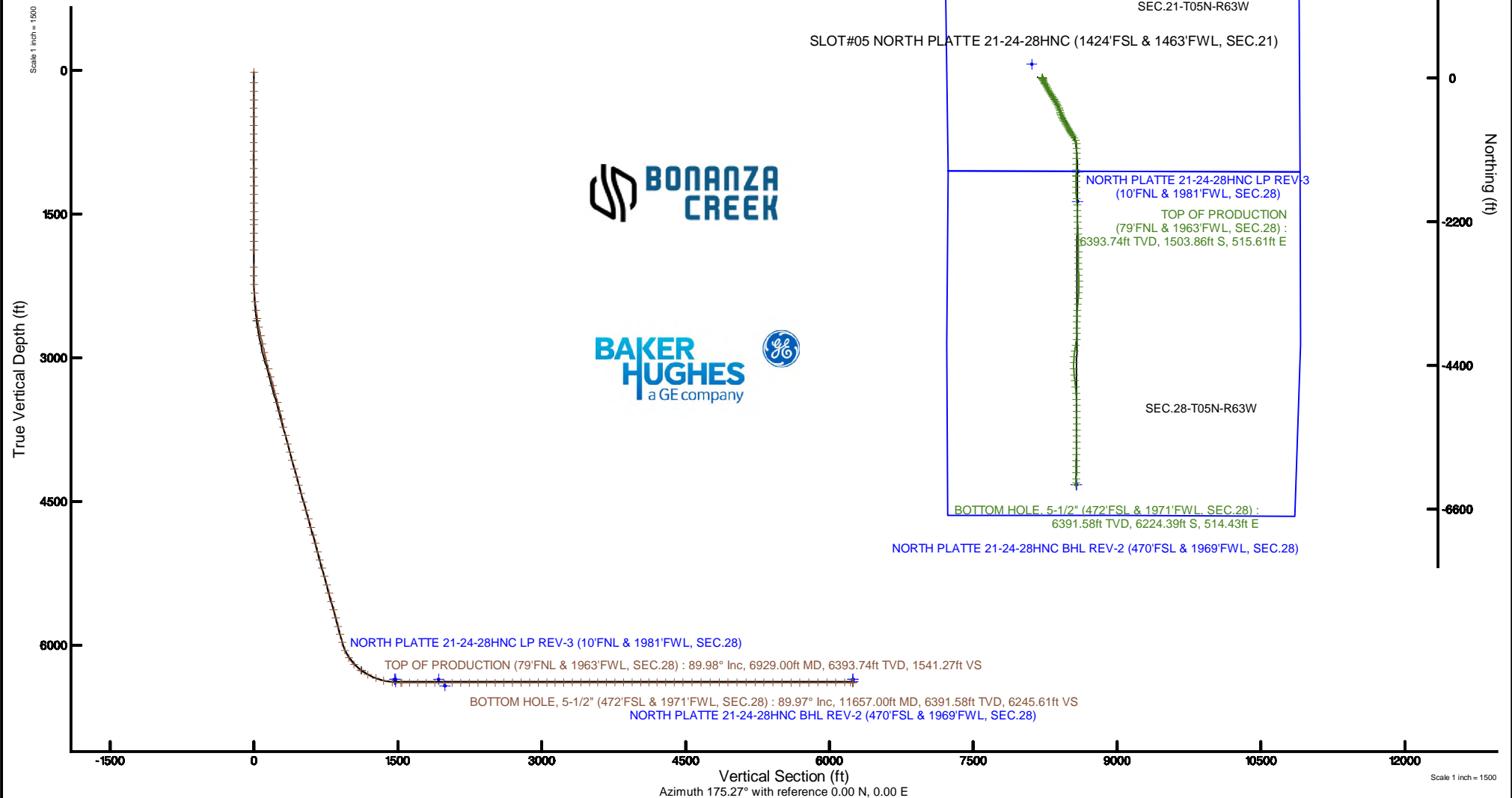


| | | | |
|--|------------------|--|--|
| Location: | COLORADO | Slot: | SLOT#05 NORTH PLATTE 21-24-28HNC (1424'FSL & 1463'FWL, SEC.21) |
| Field: | WELD COUNTY | Well: | NORTH PLATTE 21-24-28HNC |
| Facility: | SEC.21-T05N-R63W | Wellbore: | NORTH PLATTE 21-24-28HNC PWB |
| Plot reference wellpath is NORTH PLATTE 21-24-28HNC (REV-E.0) PWP | | Grid System: NAD83 / Lambert Colorado SP, Northern Zone (601), US feet | |
| True vertical depths are referenced to RIG (17K8) (RKB) | | North Reference: True north | |
| Measured depths are referenced to RIG (17K8) (RKB) | | Scale: True distance | |
| RIG (17K8) (RKB) to Mean Sea Level: 4570 feet | | Depths are in feet | |
| Mean Sea Level to Ground level (At Slot: SLOT#05 NORTH PLATTE 21-24-28HNC (1424'FSL & 1463'FWL, SEC.21)): 0 feet | | Created by: bushjamm on 2018-11-28 | |
| Coordinates are in feet referenced to Slot | | Database: Denver | |





Actual Wellpath Report

NORTH PLATTE 21-24-28HNC AWP

Page 1 of 9



| REFERENCE WELLPATH IDENTIFICATION | | | |
|-----------------------------------|---------------------------|----------|--|
| Operator | BONANZA CREEK OIL COMPANY | Slot | SLOT#05 NORTH PLATTE 21-24-28HNC (1424'FSL & 1463'FWL, SEC.21) |
| Area | COLORADO | Well | NORTH PLATTE 21-24-28HNC |
| Field | WELD COUNTY | Wellbore | NORTH PLATTE 21-24-28HNC AWB |
| Facility | SEC.21-T05N-R63W | | |

| REPORT SETUP INFORMATION | | | |
|--------------------------|---|----------------------|---|
| Projection System | NAD83 / Lambert Colorado SP, Northern Zone (501), US feet | Software System | WellArchitect® 5.1 |
| North Reference | True | User | Bushjamh |
| Scale | 0.999959 | Report Generated | 11/26/2018 at 1:03:14 PM |
| Convergence at slot | 0.68° East | Database/Source file | Denver/NORTH_PLATTE_21-24-28HNC_AWP.xml |

| WELLPATH LOCATION | | | | | | |
|-----------------------|-------------------|----------|------------------|-----------------|------------------------|-----------------|
| | Local coordinates | | Grid coordinates | | Geographic coordinates | |
| | North[ft] | East[ft] | Easting[US ft] | Northing[US ft] | Latitude | Longitude |
| Slot Location | -13.85 | 78.29 | 3293829.73 | 1383621.24 | 40°22'53.922"N | 104°26'42.922"W |
| Facility Reference Pt | | | 3293751.29 | 1383634.15 | 40°22'54.059"N | 104°26'43.933"W |
| Field Reference Pt | | | 3224525.77 | 1254425.87 | 40°01'44.400"N | 104°41'53.556"W |

| WELLPATH DATUM | | | |
|--------------------------|-------------------|--|-------------------|
| Calculation method | Minimum curvature | RIG (17'KB) (RKB) to Facility Vertical Datum | 4570.00ft |
| Horizontal Reference Pt | Slot | RIG (17'KB) (RKB) to Mean Sea Level | 4570.00ft |
| Vertical Reference Pt | RIG (17'KB) (RKB) | RIG (17'KB) (RKB) to Ground Level at Slot (SLOT#05 NORTH PLATTE 21-24-28HNC (1424'FSL & 1463'FWL, SEC.21)) | 4570.00ft |
| MD Reference Pt | RIG (17'KB) (RKB) | Section Origin | N 0.00, E 0.00 ft |
| Field Vertical Reference | Mean Sea Level | Section Azimuth | 175.27° |



Actual Wellpath Report

NORTH PLATTE 21-24-28HNC AWP

Page 2 of 9



REFERENCE WELLPATH IDENTIFICATION

| | | | |
|----------|---------------------------|----------|--|
| Operator | BONANZA CREEK OIL COMPANY | Slot | SLOT#05 NORTH PLATTE 21-24-28HNC (1424'FSL & 1463'FWL, SEC.21) |
| Area | COLORADO | Well | NORTH PLATTE 21-24-28HNC |
| Field | WELD COUNTY | Wellbore | NORTH PLATTE 21-24-28HNC AWP |
| Facility | SEC.21-T05N-R63W | | |

WELLPATH DATA (132 stations) † = interpolated/extrapolated station

| MD [ft] | Inclination [°] | Azimuth [°] | TVD [ft] | Vert Sect [ft] | North [ft] | East [ft] | Latitude | Longitude | DLS [°/100ft] | Comments |
|------------|--------------------|----------------|-------------|-------------------|---------------|--------------|----------------|-----------------|------------------|----------|
| 0.00† | 0.000 | 65.000 | 0.00 | 0.00 | 0.00 | 0.00 | 40°22'53.922"N | 104°26'42.922"W | 0.00 | |
| 17.00 | 0.000 | 65.000 | 17.00 | 0.00 | 0.00 | 0.00 | 40°22'53.922"N | 104°26'42.922"W | 0.00 | |
| 131.00 | 0.550 | 65.000 | 131.00 | -0.19 | 0.23 | 0.50 | 40°22'53.924"N | 104°26'42.915"W | 0.48 | |
| 219.00 | 0.170 | 7.920 | 219.00 | -0.46 | 0.54 | 0.90 | 40°22'53.927"N | 104°26'42.910"W | 0.54 | |
| 309.00 | 0.460 | 37.390 | 309.00 | -0.86 | 0.96 | 1.13 | 40°22'53.931"N | 104°26'42.907"W | 0.36 | |
| 396.00 | 0.190 | 43.380 | 395.99 | -1.22 | 1.34 | 1.45 | 40°22'53.935"N | 104°26'42.903"W | 0.31 | |
| 486.00 | 0.550 | 342.740 | 485.99 | -1.74 | 1.86 | 1.42 | 40°22'53.940"N | 104°26'42.903"W | 0.54 | |
| 575.00 | 0.430 | 66.010 | 574.99 | -2.27 | 2.41 | 1.60 | 40°22'53.946"N | 104°26'42.901"W | 0.74 | |
| 665.00 | 0.070 | 264.590 | 664.99 | -2.38 | 2.54 | 1.85 | 40°22'53.947"N | 104°26'42.898"W | 0.55 | |
| 755.00 | 0.370 | 17.740 | 754.99 | -2.64 | 2.81 | 1.89 | 40°22'53.950"N | 104°26'42.897"W | 0.45 | |
| 843.00 | 0.230 | 50.180 | 842.99 | -3.01 | 3.19 | 2.11 | 40°22'53.954"N | 104°26'42.894"W | 0.24 | |
| 934.00 | 0.190 | 61.420 | 933.99 | -3.17 | 3.38 | 2.38 | 40°22'53.955"N | 104°26'42.891"W | 0.06 | |
| 1023.00 | 0.630 | 171.670 | 1022.98 | -2.75 | 2.97 | 2.58 | 40°22'53.951"N | 104°26'42.888"W | 0.81 | |
| 1114.00 | 0.700 | 179.780 | 1113.98 | -1.69 | 1.92 | 2.66 | 40°22'53.941"N | 104°26'42.887"W | 0.13 | |
| 1206.00 | 0.640 | 188.220 | 1205.97 | -0.63 | 0.85 | 2.58 | 40°22'53.930"N | 104°26'42.888"W | 0.13 | |
| 1295.00 | 0.170 | 303.270 | 1294.97 | -0.23 | 0.43 | 2.40 | 40°22'53.926"N | 104°26'42.891"W | 0.82 | |
| 1383.00 | 0.670 | 251.910 | 1382.97 | -0.19 | 0.34 | 1.81 | 40°22'53.925"N | 104°26'42.898"W | 0.66 | |
| 1474.00 | 0.720 | 264.210 | 1473.96 | -0.06 | 0.12 | 0.73 | 40°22'53.923"N | 104°26'42.912"W | 0.17 | |
| 1558.00 | 0.650 | 284.350 | 1557.96 | -0.20 | 0.18 | -0.26 | 40°22'53.924"N | 104°26'42.925"W | 0.30 | |
| 1608.00 | 0.250 | 241.380 | 1607.95 | -0.25 | 0.20 | -0.63 | 40°22'53.924"N | 104°26'42.930"W | 0.99 | |
| 1698.00 | 0.030 | 359.560 | 1697.95 | -0.19 | 0.13 | -0.80 | 40°22'53.923"N | 104°26'42.932"W | 0.29 | |
| 1787.00 | 0.280 | 74.320 | 1786.95 | -0.26 | 0.21 | -0.59 | 40°22'53.924"N | 104°26'42.929"W | 0.31 | |
| 1877.00 | 0.640 | 306.510 | 1876.95 | -0.63 | 0.57 | -0.78 | 40°22'53.928"N | 104°26'42.932"W | 0.93 | |
| 2057.00 | 0.140 | 182.790 | 2056.95 | -1.08 | 0.95 | -1.60 | 40°22'53.931"N | 104°26'42.942"W | 0.40 | |
| 2146.00 | 0.320 | 346.040 | 2145.95 | -1.21 | 1.08 | -1.67 | 40°22'53.933"N | 104°26'42.943"W | 0.51 | |
| 2237.00 | 2.220 | 160.280 | 2236.93 | 0.24 | -0.33 | -1.13 | 40°22'53.919"N | 104°26'42.936"W | 2.79 | |
| 2327.00 | 4.380 | 159.820 | 2326.77 | 5.23 | -5.20 | 0.64 | 40°22'53.871"N | 104°26'42.913"W | 2.40 | |
| 2416.00 | 5.950 | 160.350 | 2415.41 | 12.97 | -12.73 | 3.36 | 40°22'53.796"N | 104°26'42.878"W | 1.76 | |
| 2505.00 | 7.420 | 157.810 | 2503.80 | 22.91 | -22.40 | 7.09 | 40°22'53.701"N | 104°26'42.830"W | 1.68 | |
| 2594.00 | 9.530 | 157.290 | 2591.82 | 35.40 | -34.52 | 12.10 | 40°22'53.581"N | 104°26'42.765"W | 2.37 | |



Actual Wellpath Report

NORTH PLATTE 21-24-28HNC AWP

Page 3 of 9



REFERENCE WELLPATH IDENTIFICATION

| | | | |
|----------|---------------------------|----------|--|
| Operator | BONANZA CREEK OIL COMPANY | Slot | SLOT#05 NORTH PLATTE 21-24-28HNC (1424'FSL & 1463'FWL, SEC.21) |
| Area | COLORADO | Well | NORTH PLATTE 21-24-28HNC |
| Field | WELD COUNTY | Wellbore | NORTH PLATTE 21-24-28HNC AWP |
| Facility | SEC.21-T05N-R63W | | |

WELLPATH DATA (132 stations)

| MD [ft] | Inclination [°] | Azimuth [°] | TVD [ft] | Vert Sect [ft] | North [ft] | East [ft] | Latitude | Longitude | DLS [°/100ft] | Comments |
|------------|--------------------|----------------|-------------|-------------------|---------------|--------------|----------------|-----------------|------------------|----------|
| 2685.00 | 11.570 | 157.250 | 2681.28 | 51.25 | -49.89 | 18.54 | 40°22'53.429"N | 104°26'42.682"W | 2.24 | |
| 2775.00 | 12.830 | 156.020 | 2769.25 | 69.26 | -67.34 | 26.09 | 40°22'53.257"N | 104°26'42.584"W | 1.43 | |
| 2865.00 | 13.000 | 147.230 | 2856.98 | 87.63 | -84.98 | 35.63 | 40°22'53.082"N | 104°26'42.461"W | 2.19 | |
| 2956.00 | 14.960 | 148.630 | 2945.28 | 107.17 | -103.62 | 47.29 | 40°22'52.898"N | 104°26'42.311"W | 2.19 | |
| 3045.00 | 15.890 | 150.580 | 3031.07 | 128.51 | -124.04 | 59.25 | 40°22'52.696"N | 104°26'42.156"W | 1.20 | |
| 3133.00 | 15.870 | 152.120 | 3115.72 | 150.52 | -145.17 | 70.80 | 40°22'52.487"N | 104°26'42.007"W | 0.48 | |
| 3223.00 | 15.860 | 154.130 | 3202.29 | 173.30 | -167.11 | 81.92 | 40°22'52.271"N | 104°26'41.863"W | 0.61 | |
| 3315.00 | 15.910 | 154.640 | 3290.78 | 196.83 | -189.82 | 92.80 | 40°22'52.046"N | 104°26'41.722"W | 0.16 | |
| 3406.00 | 16.500 | 152.580 | 3378.16 | 220.43 | -212.56 | 104.10 | 40°22'51.822"N | 104°26'41.576"W | 0.91 | |
| 3498.00 | 16.370 | 146.000 | 3466.41 | 243.79 | -234.91 | 117.36 | 40°22'51.601"N | 104°26'41.405"W | 2.03 | |
| 3589.00 | 16.410 | 143.900 | 3553.71 | 265.95 | -255.93 | 132.11 | 40°22'51.393"N | 104°26'41.215"W | 0.65 | |
| 3678.00 | 16.190 | 143.120 | 3639.13 | 287.19 | -276.01 | 146.96 | 40°22'51.195"N | 104°26'41.023"W | 0.35 | |
| 3767.00 | 16.250 | 144.290 | 3724.59 | 308.37 | -296.04 | 161.68 | 40°22'50.997"N | 104°26'40.832"W | 0.37 | |
| 3858.00 | 15.970 | 146.010 | 3812.02 | 330.21 | -316.76 | 176.11 | 40°22'50.792"N | 104°26'40.646"W | 0.61 | |
| 3949.00 | 16.060 | 150.780 | 3899.49 | 352.59 | -338.13 | 189.25 | 40°22'50.581"N | 104°26'40.476"W | 1.45 | |
| 4038.00 | 16.220 | 153.600 | 3984.98 | 375.35 | -360.01 | 200.79 | 40°22'50.365"N | 104°26'40.327"W | 0.90 | |
| 4128.00 | 16.180 | 151.770 | 4071.41 | 398.53 | -382.31 | 212.31 | 40°22'50.144"N | 104°26'40.178"W | 0.57 | |
| 4219.00 | 16.170 | 149.970 | 4158.81 | 421.61 | -404.46 | 224.65 | 40°22'49.925"N | 104°26'40.019"W | 0.55 | |
| 4310.00 | 16.280 | 150.990 | 4246.19 | 444.69 | -426.58 | 237.17 | 40°22'49.707"N | 104°26'39.857"W | 0.34 | |
| 4399.00 | 16.110 | 157.050 | 4331.66 | 467.80 | -448.86 | 248.04 | 40°22'49.486"N | 104°26'39.717"W | 1.91 | |
| 4489.00 | 16.320 | 160.430 | 4418.08 | 491.88 | -472.28 | 257.14 | 40°22'49.255"N | 104°26'39.599"W | 1.07 | |
| 4580.00 | 16.380 | 166.810 | 4505.41 | 516.93 | -496.82 | 264.36 | 40°22'49.013"N | 104°26'39.506"W | 1.97 | |
| 4672.00 | 16.580 | 167.860 | 4593.63 | 542.78 | -522.28 | 270.08 | 40°22'48.761"N | 104°26'39.432"W | 0.39 | |
| 4763.00 | 16.750 | 162.810 | 4680.81 | 568.46 | -547.50 | 276.68 | 40°22'48.512"N | 104°26'39.346"W | 1.60 | |
| 4855.00 | 16.760 | 158.660 | 4768.91 | 594.12 | -572.52 | 285.43 | 40°22'48.264"N | 104°26'39.233"W | 1.30 | |
| 4943.00 | 16.600 | 152.990 | 4853.21 | 617.91 | -595.54 | 295.75 | 40°22'48.037"N | 104°26'39.100"W | 1.86 | |
| 5032.00 | 16.640 | 151.080 | 4938.49 | 641.30 | -618.02 | 307.69 | 40°22'47.815"N | 104°26'38.946"W | 0.62 | |
| 5123.00 | 16.560 | 149.420 | 5025.70 | 664.86 | -640.59 | 320.59 | 40°22'47.592"N | 104°26'38.779"W | 0.53 | |
| 5212.00 | 16.660 | 150.200 | 5110.99 | 687.83 | -662.58 | 333.38 | 40°22'47.375"N | 104°26'38.614"W | 0.27 | |
| 5301.00 | 16.640 | 151.250 | 5196.26 | 711.02 | -684.82 | 345.85 | 40°22'47.155"N | 104°26'38.453"W | 0.34 | |



Actual Wellpath Report

NORTH PLATTE 21-24-28HNC AWP

Page 4 of 9



REFERENCE WELLPATH IDENTIFICATION

| | | | |
|----------|---------------------------|----------|--|
| Operator | BONANZA CREEK OIL COMPANY | Slot | SLOT#05 NORTH PLATTE 21-24-28HNC (1424'FSL & 1463'FWL, SEC.21) |
| Area | COLORADO | Well | NORTH PLATTE 21-24-28HNC |
| Field | WELD COUNTY | Wellbore | NORTH PLATTE 21-24-28HNC AWP |
| Facility | SEC.21-T05N-R63W | | |

WELLPATH DATA (132 stations) † = interpolated/extrapolated station

| MD [ft] | Inclination [°] | Azimuth [°] | TVD [ft] | Vert Sect [ft] | North [ft] | East [ft] | Latitude | Longitude | DLS [°/100ft] | Comments |
|------------|--------------------|----------------|-------------|-------------------|---------------|--------------|----------------|-----------------|------------------|---|
| 5392.00 | 16.650 | 153.050 | 5283.45 | 734.99 | -707.87 | 358.03 | 40°22'46.927"N | 104°26'38.295"W | 0.57 | |
| 5482.00 | 16.760 | 151.160 | 5369.65 | 758.78 | -730.73 | 370.13 | 40°22'46.701"N | 104°26'38.139"W | 0.62 | |
| 5574.00 | 16.720 | 151.720 | 5457.75 | 783.02 | -754.00 | 382.80 | 40°22'46.471"N | 104°26'37.975"W | 0.18 | |
| 5666.00 | 16.740 | 150.650 | 5545.85 | 807.19 | -777.21 | 395.56 | 40°22'46.242"N | 104°26'37.810"W | 0.34 | |
| 5757.00 | 16.780 | 148.140 | 5632.99 | 830.80 | -799.79 | 408.92 | 40°22'46.019"N | 104°26'37.638"W | 0.80 | |
| 5846.00 | 16.480 | 148.050 | 5718.27 | 853.46 | -821.41 | 422.38 | 40°22'45.805"N | 104°26'37.464"W | 0.34 | |
| 5936.00 | 16.650 | 147.020 | 5804.53 | 876.17 | -843.06 | 436.15 | 40°22'45.591"N | 104°26'37.286"W | 0.38 | |
| 6024.00 | 16.480 | 145.430 | 5888.88 | 898.10 | -863.91 | 450.10 | 40°22'45.385"N | 104°26'37.106"W | 0.55 | |
| 6112.00 | 18.060 | 142.440 | 5972.91 | 920.39 | -885.00 | 465.50 | 40°22'45.177"N | 104°26'36.907"W | 2.06 | |
| 6202.00 | 25.810 | 142.510 | 6056.33 | 948.64 | -911.65 | 485.96 | 40°22'44.913"N | 104°26'36.642"W | 8.61 | |
| 6292.00 | 34.230 | 159.280 | 6134.33 | 989.59 | -951.01 | 506.91 | 40°22'44.524"N | 104°26'36.372"W | 13.13 | |
| 6381.00 | 43.830 | 172.710 | 6203.51 | 1044.67 | -1005.22 | 519.73 | 40°22'43.989"N | 104°26'36.206"W | 14.33 | |
| 6471.00 | 53.320 | 180.580 | 6263.04 | 1111.95 | -1072.43 | 523.33 | 40°22'43.325"N | 104°26'36.159"W | 12.40 | |
| 6560.00 | 64.280 | 181.830 | 6309.07 | 1187.55 | -1148.42 | 521.69 | 40°22'42.574"N | 104°26'36.181"W | 12.37 | |
| 6651.00 | 69.500 | 180.880 | 6344.78 | 1270.74 | -1232.06 | 519.72 | 40°22'41.747"N | 104°26'36.206"W | 5.82 | |
| 6739.00 | 74.650 | 180.720 | 6371.85 | 1354.05 | -1315.76 | 518.55 | 40°22'40.920"N | 104°26'36.221"W | 5.85 | |
| 6830.00 | 83.800 | 181.030 | 6388.85 | 1442.93 | -1405.05 | 517.19 | 40°22'40.038"N | 104°26'36.239"W | 10.06 | |
| 6920.00 | 89.970 | 180.820 | 6393.74 | 1532.31 | -1494.86 | 515.74 | 40°22'39.150"N | 104°26'36.258"W | 6.86 | |
| 6929.00† | 89.976 | 180.857 | 6393.74 | 1541.27 | -1503.86 | 515.61 | 40°22'39.061"N | 104°26'36.259"W | 0.42 | TOP OF PRODUCTION (79'FNL & 1963'FWL, SEC.28) |
| 7010.00 | 90.030 | 181.190 | 6393.74 | 1621.86 | -1584.84 | 514.16 | 40°22'38.261"N | 104°26'36.278"W | 0.42 | |
| 7096.00 | 90.180 | 180.070 | 6393.58 | 1707.48 | -1670.84 | 513.21 | 40°22'37.411"N | 104°26'36.290"W | 1.31 | |
| 7185.00 | 89.910 | 177.810 | 6393.51 | 1796.29 | -1759.82 | 514.86 | 40°22'36.532"N | 104°26'36.269"W | 2.56 | |
| 7275.00 | 90.000 | 174.240 | 6393.58 | 1886.27 | -1849.58 | 521.10 | 40°22'35.645"N | 104°26'36.189"W | 3.97 | |
| 7365.00 | 90.310 | 176.150 | 6393.34 | 1976.27 | -1939.26 | 528.64 | 40°22'34.759"N | 104°26'36.091"W | 2.15 | |
| 7456.00 | 89.940 | 178.620 | 6393.14 | 2067.20 | -2030.16 | 532.79 | 40°22'33.861"N | 104°26'36.038"W | 2.74 | |
| 7544.00 | 90.180 | 179.700 | 6393.05 | 2154.99 | -2118.15 | 534.08 | 40°22'32.991"N | 104°26'36.021"W | 1.26 | |
| 7634.00 | 90.150 | 177.150 | 6392.79 | 2244.85 | -2208.11 | 536.55 | 40°22'32.102"N | 104°26'35.989"W | 2.83 | |
| 7725.00 | 90.180 | 177.190 | 6392.52 | 2335.80 | -2299.00 | 541.04 | 40°22'31.204"N | 104°26'35.931"W | 0.05 | |
| 7814.00 | 90.060 | 178.060 | 6392.34 | 2424.72 | -2387.92 | 544.73 | 40°22'30.325"N | 104°26'35.883"W | 0.99 | |
| 7904.00 | 89.940 | 178.950 | 6392.34 | 2514.58 | -2477.89 | 547.08 | 40°22'29.436"N | 104°26'35.853"W | 1.00 | |



Actual Wellpath Report

NORTH PLATTE 21-24-28HNC AWP

Page 5 of 9



REFERENCE WELLPATH IDENTIFICATION

| | | | |
|----------|---------------------------|----------|--|
| Operator | BONANZA CREEK OIL COMPANY | Slot | SLOT#05 NORTH PLATTE 21-24-28HNC (1424'FSL & 1463'FWL, SEC.21) |
| Area | COLORADO | Well | NORTH PLATTE 21-24-28HNC |
| Field | WELD COUNTY | Wellbore | NORTH PLATTE 21-24-28HNC AWP |
| Facility | SEC.21-T05N-R63W | | |

WELLPATH DATA (132 stations)

| MD [ft] | Inclination [°] | Azimuth [°] | TVD [ft] | Vert Sect [ft] | North [ft] | East [ft] | Latitude | Longitude | DLS [°/100ft] | Comments |
|------------|--------------------|----------------|-------------|-------------------|---------------|--------------|----------------|-----------------|------------------|----------|
| 7993.00 | 90.220 | 179.660 | 6392.21 | 2603.36 | -2566.88 | 548.16 | 40°22'28.557"N | 104°26'35.839"W | 0.86 | |
| 8085.00 | 89.940 | 178.770 | 6392.09 | 2695.14 | -2658.87 | 549.42 | 40°22'27.648"N | 104°26'35.823"W | 1.01 | |
| 8174.00 | 90.090 | 182.920 | 6392.06 | 2783.70 | -2747.84 | 548.11 | 40°22'26.769"N | 104°26'35.840"W | 4.67 | |
| 8264.00 | 90.000 | 178.660 | 6391.99 | 2873.26 | -2837.81 | 546.87 | 40°22'25.880"N | 104°26'35.856"W | 4.73 | |
| 8354.00 | 90.280 | 177.150 | 6391.77 | 2963.16 | -2927.75 | 550.16 | 40°22'24.991"N | 104°26'35.813"W | 1.71 | |
| 8446.00 | 89.880 | 178.480 | 6391.64 | 3055.07 | -3019.68 | 553.67 | 40°22'24.082"N | 104°26'35.768"W | 1.51 | |
| 8533.00 | 90.060 | 178.040 | 6391.69 | 3141.95 | -3106.64 | 556.31 | 40°22'23.223"N | 104°26'35.734"W | 0.55 | |
| 8622.00 | 90.000 | 180.960 | 6391.64 | 3230.69 | -3195.63 | 557.08 | 40°22'22.344"N | 104°26'35.724"W | 3.28 | |
| 8712.00 | 90.150 | 183.280 | 6391.52 | 3320.04 | -3285.56 | 553.75 | 40°22'21.455"N | 104°26'35.767"W | 2.58 | |
| 8801.00 | 90.220 | 186.010 | 6391.24 | 3407.85 | -3374.26 | 546.55 | 40°22'20.579"N | 104°26'35.860"W | 3.07 | |
| 8891.00 | 89.820 | 185.000 | 6391.21 | 3496.41 | -3463.84 | 537.91 | 40°22'19.693"N | 104°26'35.972"W | 1.21 | |
| 8980.00 | 90.000 | 183.560 | 6391.35 | 3584.31 | -3552.59 | 531.27 | 40°22'18.816"N | 104°26'36.058"W | 1.63 | |
| 9069.00 | 90.000 | 182.790 | 6391.35 | 3672.46 | -3641.45 | 526.34 | 40°22'17.938"N | 104°26'36.121"W | 0.87 | |
| 9161.00 | 90.000 | 181.470 | 6391.35 | 3763.80 | -3733.39 | 522.92 | 40°22'17.030"N | 104°26'36.165"W | 1.43 | |
| 9252.00 | 89.910 | 179.420 | 6391.42 | 3854.43 | -3824.38 | 522.22 | 40°22'16.131"N | 104°26'36.175"W | 2.25 | |
| 9339.00 | 90.220 | 179.070 | 6391.32 | 3941.22 | -3911.37 | 523.36 | 40°22'15.271"N | 104°26'36.160"W | 0.54 | |
| 9429.00 | 90.030 | 184.820 | 6391.12 | 4030.57 | -4001.28 | 520.31 | 40°22'14.383"N | 104°26'36.199"W | 6.39 | |
| 9519.00 | 90.060 | 190.450 | 6391.05 | 4118.44 | -4090.45 | 508.36 | 40°22'13.501"N | 104°26'36.354"W | 6.26 | |
| 9608.00 | 89.910 | 189.260 | 6391.07 | 4204.57 | -4178.13 | 493.12 | 40°22'12.635"N | 104°26'36.551"W | 1.35 | |
| 9699.00 | 90.000 | 184.110 | 6391.15 | 4293.74 | -4268.48 | 482.53 | 40°22'11.742"N | 104°26'36.687"W | 5.66 | |
| 9789.00 | 89.970 | 181.100 | 6391.17 | 4383.00 | -4358.38 | 478.44 | 40°22'10.854"N | 104°26'36.740"W | 3.34 | |
| 9881.00 | 90.030 | 178.120 | 6391.17 | 4474.72 | -4450.37 | 479.07 | 40°22'09.945"N | 104°26'36.732"W | 3.24 | |
| 9975.00 | 89.970 | 175.210 | 6391.17 | 4568.68 | -4544.20 | 484.54 | 40°22'09.018"N | 104°26'36.662"W | 3.10 | |
| 10069.00 | 89.970 | 173.120 | 6391.22 | 4662.66 | -4637.71 | 494.09 | 40°22'08.094"N | 104°26'36.538"W | 2.22 | |
| 10162.00 | 89.940 | 173.880 | 6391.29 | 4755.62 | -4730.11 | 504.62 | 40°22'07.181"N | 104°26'36.402"W | 0.82 | |
| 10256.00 | 90.120 | 174.810 | 6391.24 | 4849.60 | -4823.65 | 513.88 | 40°22'06.256"N | 104°26'36.283"W | 1.01 | |
| 10350.00 | 90.000 | 178.760 | 6391.14 | 4943.55 | -4917.48 | 519.16 | 40°22'05.329"N | 104°26'36.214"W | 4.20 | |
| 10444.00 | 89.850 | 179.630 | 6391.27 | 5037.33 | -5011.47 | 520.48 | 40°22'04.400"N | 104°26'36.197"W | 0.94 | |
| 10538.00 | 89.970 | 179.380 | 6391.41 | 5131.07 | -5105.47 | 521.29 | 40°22'03.471"N | 104°26'36.187"W | 0.30 | |
| 10632.00 | 90.060 | 180.500 | 6391.39 | 5224.76 | -5199.47 | 521.39 | 40°22'02.542"N | 104°26'36.186"W | 1.20 | |



Actual Wellpath Report

NORTH PLATTE 21-24-28HNC AWP

Page 6 of 9



REFERENCE WELLPATH IDENTIFICATION

| | | | |
|----------|---------------------------|----------|--|
| Operator | BONANZA CREEK OIL COMPANY | Slot | SLOT#05 NORTH PLATTE 21-24-28HNC (1424'FSL & 1463'FWL, SEC.21) |
| Area | COLORADO | Well | NORTH PLATTE 21-24-28HNC |
| Field | WELD COUNTY | Wellbore | NORTH PLATTE 21-24-28HNC AWP |
| Facility | SEC.21-T05N-R63W | | |

WELLPATH DATA (132 stations)

| MD [ft] | Inclination [°] | Azimuth [°] | TVD [ft] | Vert Sect [ft] | North [ft] | East [ft] | Latitude | Longitude | DLS [°/100ft] | Comments |
|------------|--------------------|----------------|-------------|-------------------|---------------|--------------|----------------|-----------------|------------------|--|
| 10725.00 | 89.970 | 180.420 | 6391.37 | 5317.38 | -5292.46 | 520.64 | 40°22'01.623"N | 104°26'36.195"W | 0.13 | |
| 10819.00 | 89.910 | 180.420 | 6391.46 | 5411.00 | -5386.46 | 519.95 | 40°22'00.695"N | 104°26'36.204"W | 0.06 | |
| 10913.00 | 89.880 | 179.450 | 6391.64 | 5504.68 | -5480.46 | 520.06 | 40°21'59.766"N | 104°26'36.203"W | 1.03 | |
| 11007.00 | 90.030 | 180.350 | 6391.71 | 5598.38 | -5574.46 | 520.22 | 40°21'58.837"N | 104°26'36.201"W | 0.97 | |
| 11101.00 | 89.940 | 180.850 | 6391.73 | 5691.97 | -5668.45 | 519.24 | 40°21'57.908"N | 104°26'36.214"W | 0.54 | |
| 11195.00 | 90.030 | 181.220 | 6391.76 | 5785.49 | -5762.44 | 517.54 | 40°21'56.979"N | 104°26'36.236"W | 0.41 | |
| 11289.00 | 90.220 | 181.310 | 6391.55 | 5878.98 | -5856.42 | 515.46 | 40°21'56.051"N | 104°26'36.262"W | 0.22 | |
| 11383.00 | 89.910 | 180.610 | 6391.45 | 5972.51 | -5950.40 | 513.89 | 40°21'55.122"N | 104°26'36.283"W | 0.81 | |
| 11477.00 | 90.030 | 180.400 | 6391.50 | 6066.12 | -6044.40 | 513.06 | 40°21'54.193"N | 104°26'36.294"W | 0.26 | |
| 11570.00 | 89.940 | 179.550 | 6391.52 | 6158.81 | -6137.40 | 513.10 | 40°21'53.274"N | 104°26'36.293"W | 0.92 | |
| 11632.00 | 89.970 | 178.890 | 6391.57 | 6220.66 | -6199.39 | 513.95 | 40°21'52.662"N | 104°26'36.282"W | 1.07 | |
| 11657.00 | 89.970 | 178.890 | 6391.58 | 6245.61 | -6224.39 | 514.43 | 40°21'52.415"N | 104°26'36.276"W | 0.00 | BOTTOM HOLE, 5-1/2" (472'FSL & 1971'FWL, SEC.28) |



Actual Wellpath Report

NORTH PLATTE 21-24-28HNC AWP

Page 7 of 9



REFERENCE WELLPATH IDENTIFICATION

| | | | |
|----------|---------------------------|----------|--|
| Operator | BONANZA CREEK OIL COMPANY | Slot | SLOT#05 NORTH PLATTE 21-24-28HNC (1424'FSL & 1463'FWL, SEC.21) |
| Area | COLORADO | Well | NORTH PLATTE 21-24-28HNC |
| Field | WELD COUNTY | Wellbore | NORTH PLATTE 21-24-28HNC AWB |
| Facility | SEC.21-T05N-R63W | | |

TARGETS

| Name | TVD [ft] | North [ft] | East [ft] | Grid East [US ft] | Grid North [US ft] | Latitude | Longitude | Shape |
|---|-------------|---------------|--------------|----------------------|-----------------------|----------------|-----------------|---------|
| SEC.21-T05N-R63W | -8.00 | 212.41 | -164.63 | 3293662.59 | 1383831.67 | 40°22'56.021"N | 104°26'45.049"W | polygon |
| SEC.28-T05N-R63W | -8.00 | -1707.26 | 3509.15 | 3297358.79 | 1381955.91 | 40°22'37.049"N | 104°25'57.580"W | polygon |
| NORTH PLATTE 21-24-28HNC BHL (470'FSL & 1969'FWL, SEC.28) | 6358.00 | -6223.44 | 519.32 | 3294423.02 | 1377404.68 | 40°21'52.424"N | 104°26'36.213"W | point |
| NORTH PLATTE 21-24-28HNC BHL REV-1 (470'FSL & 1969'FWL, SEC.28) | 6358.00 | -6224.24 | 515.81 | 3294419.52 | 1377403.84 | 40°21'52.416"N | 104°26'36.258"W | point |
| NORTH PLATTE 21-24-28HNC LP (470'FNL & 1981'FWL, SEC.28) | 6358.00 | -1887.87 | 536.35 | 3294388.48 | 1381739.96 | 40°22'35.267"N | 104°26'35.991"W | point |
| NORTH PLATTE 21-24-28HNC LP REV-1 (10'FNL & 1981'FWL, SEC.28) | 6358.00 | -1427.87 | 536.35 | 3294383.01 | 1382199.91 | 40°22'39.812"N | 104°26'35.991"W | point |
| NORTH PLATTE 21-24-28HNC LP REV-2 (10'FNL & 1981'FWL, SEC.28) | 6358.00 | -1435.38 | 534.94 | 3294381.68 | 1382192.38 | 40°22'39.738"N | 104°26'36.010"W | point |
| NORTH PLATTE 21-24-28HNC BHL REV-2 (470'FSL & 1969'FWL, SEC.28) | 6383.00 | -6224.24 | 515.81 | 3294419.52 | 1377403.84 | 40°21'52.416"N | 104°26'36.258"W | point |
| NORTH PLATTE 21-24-28HNC LP REV-3 (10'FNL & 1981'FWL, SEC.28) | 6383.00 | -1435.38 | 534.91 | 3294381.65 | 1382192.38 | 40°22'39.738"N | 104°26'36.010"W | point |
| SEC.28-T05N-R63W 460'SETBACKS | 6425.00 | -1707.26 | 3509.15 | 3297358.79 | 1381955.91 | 40°22'37.049"N | 104°25'57.580"W | polygon |



Actual Wellpath Report

NORTH PLATTE 21-24-28HNC AWP

Page 8 of 9



REFERENCE WELLPATH IDENTIFICATION

| | | | |
|----------|---------------------------|----------|--|
| Operator | BONANZA CREEK OIL COMPANY | Slot | SLOT#05 NORTH PLATTE 21-24-28HNC (1424'FSL & 1463'FWL, SEC.21) |
| Area | COLORADO | Well | NORTH PLATTE 21-24-28HNC |
| Field | WELD COUNTY | Wellbore | NORTH PLATTE 21-24-28HNC AWB |
| Facility | SEC.21-T05N-R63W | | |

WELLPATH COMPOSITION - Ref Wellbore: NORTH PLATTE 21-24-28HNC AWB Ref Wellpath: NORTH PLATTE 21-24-28HNC AWP

| Start MD [ft] | End MD [ft] | Positional Uncertainty Model | Log Name/Comment | Wellbore |
|------------------|----------------|--|--------------------------------------|------------------------------|
| 17.00 | 1558.00 | BHI NaviTrak (Rotating+Axial Corr) | SURFACE HOLE SURVEYS <131-1558> | NORTH PLATTE 21-24-28HNC AWB |
| 1558.00 | 11632.00 | BHI AutoTrak Curve (Axial Corr, Short spacing) | 8 1/2" MONOBORE SURVEYS <1608-11632> | NORTH PLATTE 21-24-28HNC AWB |
| 11632.00 | 11657.00 | Blind Drilling (std) | Projection to bit | NORTH PLATTE 21-24-28HNC AWB |



Actual Wellpath Report

NORTH PLATTE 21-24-28HNC AWP

Page 9 of 9



| REFERENCE WELLPATH IDENTIFICATION | | | |
|-----------------------------------|---------------------------|----------|--|
| Operator | BONANZA CREEK OIL COMPANY | Slot | SLOT#05 NORTH PLATTE 21-24-28HNC (1424'FSL & 1463'FWL, SEC.21) |
| Area | COLORADO | Well | NORTH PLATTE 21-24-28HNC |
| Field | WELD COUNTY | Wellbore | NORTH PLATTE 21-24-28HNC AWB |
| Facility | SEC.21-T05N-R63W | | |

| WELLPATH COMMENTS | | | | |
|-------------------|--------------------|----------------|-------------|--|
| MD [ft] | Inclination [°] | Azimuth [°] | TVD [ft] | Comment |
| 6929.00 | 89.976 | 180.857 | 6393.74 | TOP OF PRODUCTION (79'FNL & 1963'FWL, SEC.28) |
| 11657.00 | 89.970 | 178.890 | 6391.58 | BOTTOM HOLE, 5-1/2" (472'FSL & 1971'FWL, SEC.28) |