

UP 113X22
Proposed Wellbore

9/12/2018

Rangely Weber Sand Unit

Well Details:	
STATE & CO	CO - Rio Blanco
TWNS & RNG	T2N, R102W, 6th PM
SECTION	SWNW Section 22
API	05-103-08606
CHEVNO	DL1651

Casing Details:	
Type	Depth
KB	5428
GL	5414
16 in. Unknown	0-45', 4 yds cmt
9.625 in.36#/ft K-55	0-808', 500 sxs cmt
7 in. 23 #/ft, K-55	0-5397'
7 in. 26 #/ft, K-55	5397-6725', 1770 sxs cmt
DV Tool	4459'
PBTD	6705
TD	6726

Formation	Depth
Niobrara	2,420
Frontier	3,352
Frontier Snd	3,440
Mowry	3,628
Dakota	3,715
Morrison	3,803
Curtis	4,427
Entrada	4,610
Carmel	4,730
Navajo	4,788
Chinle	5,377
Shinarump	5,520
Moenkopi	5,590
Weber	6,268

GOC_CALC	5757
----------	------

Weber 1a	6268	
Weber 2	6455	
Weber 3a	6460	
Weber 4	6544	
Weber 5a	6557	
Weber 6		
Weber 7a		
Weber 8		
Weber 9a		
Weber 10	0	
Weber 11a	0	

OWC_CALC	6527
----------	------

KB 5428
GL 5414

16 in. Unknown
0-45', 4 yds cmt

9.625 in.36#/ft K-55
0-808', 500 sxs cmt

7 in. 23 #/ft, K-55
0-5397'

Navajo Top Perf TBD, 4815'

Navajo Btm Perf TBD, 5300'

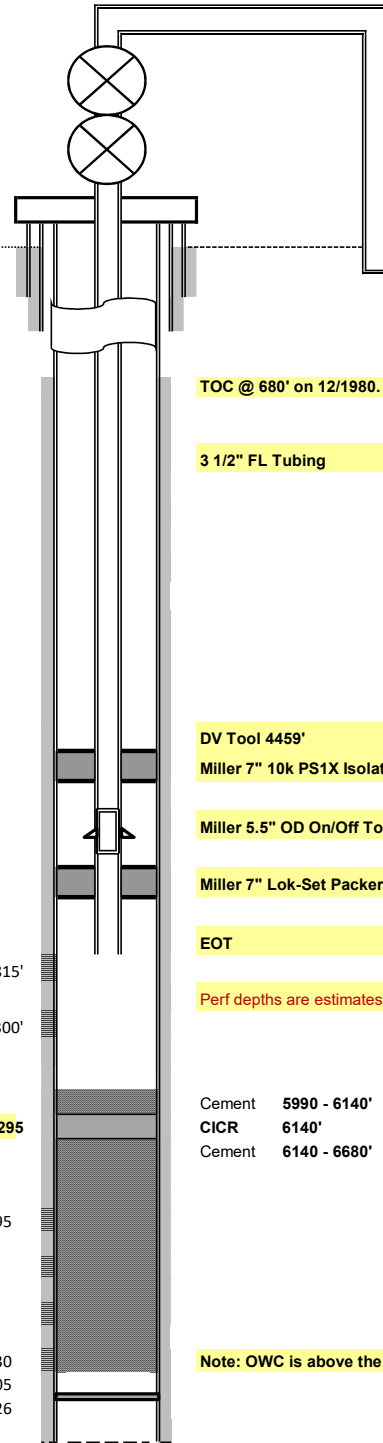
Bad Casing 6147-6295

Perf, Top 6295

Perf, Btm 6630

PBTD 6705

TD 6726



TOC @ 680' on 12/1980. Cement bond has weak points below 3200'.

3 1/2" FL Tubing

DV Tool 4459'
Miller 7" 10k PS1X Isolation Packer 4700

Miller 5.5" OD On/Off Tool 4740

Miller 7" Lok-Set Packer 4750

EOT 4770

Perf depths are estimates. Run a CNL and geologist will picks perf depths

Cement 5990 - 6140'
CICR 6140'
Cement 6140 - 6680'

Note: OWC is above the bottom perf

****DOUBLE CHECK TUBING LANDING DETAIL IN WELL/TOUR FILE****

Notes:

- DV Tool @ 4459'
- Bad Casing from 6147-6295' (2/24/2015) - Communication from behind casing or around packer
- 2/2015 - Tagged @ 6478', no cleanout
- 1/2014 - Cleanout to 6675' (30' from PBTD)
- 1770 sacks is the total volume of cement pumped in stages 1 and 2 to cement the 7" casing.