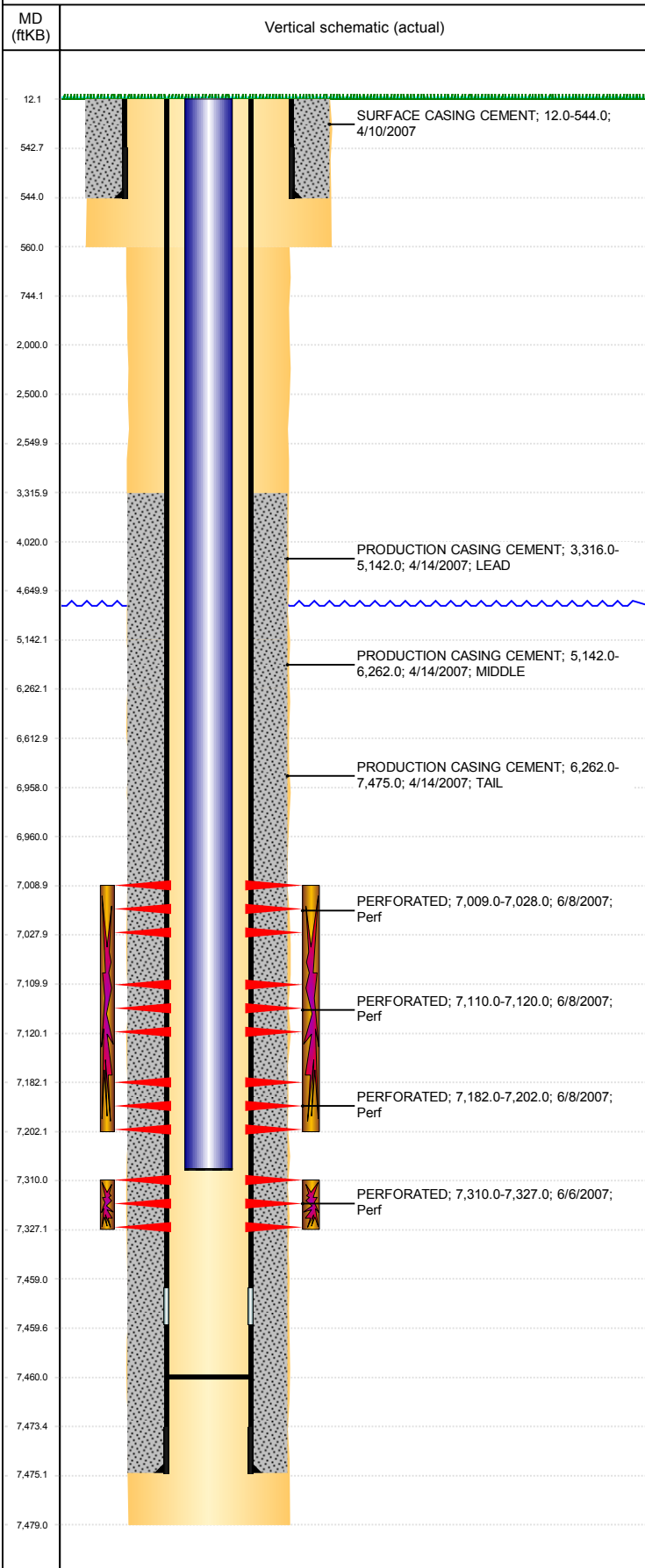


Well Name: ROBERT FEDERAL 21-14

DEVIATED, ORIGINAL HOLE, 11/29/2018 11:28:05 AM



Well Header

API 05-123-24845	Business Unit DJ BASIN	District 15	Well Config DEVIATED
KB - GL / MSL (ft... 12.00	Spud Date 4/9/2007	P & A Date	Well Production Status SI
SoRT No			

Comment
DEVIATED WELL. STATE SHOWS WELL SHUT IN SINCE DEC 2016.

Surface Location (Congressional)

Qtr 3 NW	Qtr 4 NE	Section 14	Twonshp 4	Twonsh... N	Range 66	Rng E... W	Actual Latitude (°) 40.31709940	Actual Longitude (°) -104.74143580
-------------	-------------	---------------	--------------	----------------	-------------	---------------	------------------------------------	---------------------------------------

Wellbore Sections

Section Des	Size (in)	Act Top, MD (ftKB)	Act Btm, MD (ftKB)
SURFACE	12 1/4	12	560
PRODUCTION	7 7/8	560	7,479

Casing Strings

Csg Des	Run Date	OD (in)	Wt/Len (lb/ft)	Grade	Top, MD (ftKB)	MD (ftKB)
Surface	4/9/2007	8 5/8	24.00	J-55	12.0	544.0
Production	4/14/2007	4 1/2	11.60	I-80	12.0	7,475.0

Cement

Des	Start Date	Top (ftKB)	Btm (ftKB)
SURFACE CASING CEMENT	4/10/2007	12.0	544.0
PRODUCTION CASING CEMENT	4/14/2007	3,316.0	5,142.0
PRODUCTION CASING CEMENT	4/14/2007	5,142.0	6,262.0
PRODUCTION CASING CEMENT	4/14/2007	6,262.0	7,475.0

Zone Statuses

Zone Name	Status Date	Status	Fluid Type	Job	Prod Method
NIOBRARA	7/16/2007	PR	Water	DRILLING/COMPLETION - ORIGINAL, 4/9/2007...	Flowing
NIOBRARA	11/13/2013	PR			Flowing
CODELL	7/16/2007	PR	Water	DRILLING/COMPLETION - ORIGINAL, 4/9/2007...	Flowing
CODELL	11/13/2013	PR			Flowing

Perforation Data

Linked Zone	Bnch/Stg	Entered Shot Total	Top (ftKB)	Btm (ftKB)	Date
NIOBRARA, ORIGINAL HOLE	A	40	7,009.00	7,028.00	6/8/2007
NIOBRARA, ORIGINAL HOLE	B	20	7,110.00	7,120.00	6/8/2007
NIOBRARA, ORIGINAL HOLE	C	40	7,182.00	7,202.00	6/8/2007
CODELL, ORIGINAL HOLE		68	7,310.00	7,327.00	6/6/2007

Stimulation Intervals

Zone	Start Date	Top (ftKB)	Btm (ftKB)
NIOBRARA, ORIGINAL HOLE	6/8/2007	7,009.0	7,202.0
CODELL, ORIGINAL HOLE	6/8/2007	7,310.0	7,327.0

Other In Hole

Run Date	Des	OD (in)	Top (ftKB)	Btm (ftKB)

Logs

Date	Type	Top, MD (ftKB)	Btm, MD (ftKB)
4/13/2007	COMPENSATED DENSITY	586.0	7,475.0
4/13/2007	INDUCTION	586.0	7,475.0
6/6/2007	CEMENT BOND	3,150.0	7,434.0

Plug Back Total Depths

Date	Type	Com	Depth (ftKB)
6/6/2007	FILL	DEPTH LOGGER ON CBL	7,436.0
12/14/2007	FILL	DRLG TO PBTD	7,460.0