

Cementing Treatment



Start Date	8/19/2018	Project ID	PRJ1009756
End Date	8/19/2018	Well	KTC FARMS D-35-36HN
Client	BAYSWATER EXPLORATION & PRODUCTION, LLC	API#	05-123-47090
Service Sup.	Chad Johnson	County	WELD
District	Cheyenne, WY	State/Province	CO
Type of Job	Long String	Rig	True 38
Execution ID	EXC-09941-Q9Q9P302		

WELL GEOMETRY

Type	ID (in)	OD (in)	Wt. (lb/ft)	MD (ft)	TVD (ft)	Excess(%)
Previous Casing	8.92	9.63	36.00	1,567.00	1,550.00	
Open Hole	8.50	0.00	0.00	17,360.00	7,142.00	7.00
Casing	4.78	5.50	20.00	17,353.00	7,142.00	

Shoe Length (ft): 40.00

HARDWARE

Bottom Plug Used?	No	Centralizers Type	Bow
Top Plug Used?	Yes	Landing Collar Depth (ft)	17,313
Top Plug Provided By	Non BJ	Top Connection Thread	BTC
Top Plug Size	5.500	Top Connection Size	5.5
Centralizers Used	Yes		

CIRCULATION PRIOR TO JOB

Well Circulated By	Rig
Circulation Prior to Job	Yes
Circulation Time (min)	200.00
Lost Circulation Prior to Cement Job	No
Mud Density In (ppg)	9.80
Mud Density Out (ppg)	9.80
Solids Present at End of Circulation	No
Flare Prior to/during the Cement Job	No
Gas Present	No

Cementing Treatment



TEMPERATURE

Ambient Temperature (°F) 75.00

Mix Water Temperature (°F) 65.00

BJ FLUID DETAILS

Fluid Type	Fluid Name	Density (ppg)	Yield (Cu Ft/sk)	H2O Req. (gals/sk)	Planned Top of Fluid (Ft)	Length (Ft)	Vol (sk)	Vol (Cu Ft)	Vol (bbls)
Spacer / Pre Flush / Flush	IntegraGuard EZ Spacer	11.5000			0.00				80
Lead Slurry	BJCem P100.3.01C	13.2000	1.8283	9.87	0.00	6750	930	1,692.0000	303
Tail Slurry	BJCem P50.6.02C	13.5000	1.4777	7.45	6,750.00	10605	1770	2,605.0000	467
Displacement 2	Retarded Water w/ Clay Protection & Biocide	8.3331				0	0	0.0000	20
Displacement Final	Water w/ Clay Protection & Biocide	8.3331			0.00			0.0000	363

Fluid Type	Fluid Name	Component	Concentration	UOM
Spacer / Pre Flush / Flush	IntegraGuard EZ Spacer	SPACER SURFACTANT, SS-247	0.7000	GPB
Spacer / Pre Flush / Flush	IntegraGuard EZ Spacer	SAND, S-8, Silica Flour, 200 Mesh	215.0000	PPB
Spacer / Pre Flush / Flush	IntegraGuard EZ Spacer	SPACER SURFACTANT, SS-267	0.7000	GPB
Spacer / Pre Flush / Flush	IntegraGuard EZ Spacer	GELLANT WATER, GW-86	0.9000	PPB
Lead Slurry	BJCem P100.3.01C	FOAM PREVENTER, FP-25	0.3000	BWOB
Lead Slurry	BJCem P100.3.01C	GELLANT WATER, GW-86	0.0500	BWOB
Lead Slurry	BJCem P100.3.01C	CEMENT, ASTM TYPE III	100.0000	PCT
Lead Slurry	BJCem P100.3.01C	FLUID LOSS, FL-66	0.5000	BWOB
Lead Slurry	BJCem P100.3.01C	RETARDER, SR-20	0.6000	BWOB
Lead Slurry	BJCem P100.3.01C	BONDING AGENT, EC-2	3.0000	BWOB
Tail Slurry	BJCem P50.6.02C	FOAM PREVENTER, FP-25	0.3000	BWOB
Tail Slurry	BJCem P50.6.02C	CEMENT, CLASS G	50.0000	PCT
Tail Slurry	BJCem P50.6.02C	FLUID LOSS, FL-66	0.2000	BWOB
Tail Slurry	BJCem P50.6.02C	GELLANT WATER, GW-86	0.1000	BWOB
Tail Slurry	BJCem P50.6.02C	RETARDER, SR-20	0.1500	BWOB
Tail Slurry	BJCem P50.6.02C	Flyash (Rockies)	50.0000	PCT

Cementing Treatment



Tail Slurry	BJCem P50.6.02C	EXTENDER, BENTONITE	2.0000	BWOB
Displacement 2	Retarded Water w/ Clay Protection & Biocide	RETARDER, R-8L	0.5000	GPB
Displacement 2	Retarded Water w/ Clay Protection & Biocide	CLAY STABILIZER ResCare CS	0.0800	GPB
Displacement 2	Retarded Water w/ Clay Protection & Biocide	BIOCIDE, BIOC11139W	0.0100	GPB
Displacement Final	Water w/ Clay Protection & Biocide	BIOCIDE, BIOC11139W	0.0100	GPB
Displacement Final	Water w/ Clay Protection & Biocide	CLAY STABILIZER ResCare CS	0.0800	GPB

TREATMENT SUMMARY

Time	Fluid	Rate (bpm)	Fluid Vol. (bbls)	Pipe Pressure (psi)
8/19/2018 2:55:00 PM	IntegraGuard EZ Spacer	6.00	80	500.00
8/19/2018 3:12:00 PM	BJCem P100.3.01C	8.00	303	900.00
8/19/2018 3:56:00 PM	BJCem P50.6.02C	8.00	467	500.00
8/19/2018 5:11:00 PM	Retarded Water w/ Clay Protection & Biocide	8.00	20	400.00
8/19/2018 5:13:00 PM	Water w/ Clay Protection & Biocide	8.00	363	2,000.00

DISPLACEMENT AND END OF JOB SUMMARY

Displaced By	BJ	Amount of Cement Returned/Reversed	38.00
Calculated Displacement Volume (bbls)	383.00	Method Used to Verify Returns	Visual
Actual Displacement Volume (bbls)	383.00	Amount of Spacer to Surface	80.00
Did Float Hold?	Yes	Pressure Left on Casing (psi)	0.00
Bump Plug	Yes	Amount Bled Back After Job	4.00
Bump Plug Pressure (psi)	2,500.00	Total Volume Pumped (bbls)	1,233
Were Returns Planned at Surface	Yes	Top Out Cement Spotted	No
Cement returns During Job	Full	Lost Circulation During Cement Job	No

EVENT LOG



Customer Name: BAYSWATER EXPLORATION & PRODUCTION, LLC

Well Name: KTC FARMS D-35-36HN

Job Type: Long String

Quote ID: QUO-17537-Q6Z7W4

Plan ID: ORD-09941-Q9Q9P3

Execution ID: EXC-09941-Q9Q9P302

District: Cheyenne, WY

BJ Supervisor: Chad Johnson

Seq.	Start Dt./Time	Event	Density (ppg)	Pump Rate (bpm)	Pump Vol(bbls)	Pipe Pressure(psi)	Comments
1	08/19/2018 07:30	Callout					Crew called out requested on location for 1300
2	08/19/2018 12:00	Arrive on Location					Crew arrived on location
3	08/19/2018 12:05	Safety Meeting					Safety meeting
4	08/19/2018 12:20	Spot Units					Spotted all units
5	08/19/2018 12:25	Rig Up					Rigged up all equipment
6	08/19/2018 13:15	Customer					Waiting on rig to finish circulating
7	08/19/2018 14:15	Safety Meeting					Safety meeting
8	08/19/2018 14:47	Prime Up	8.3400	3.00	5.00	300.00	Fill lines with 5 bbls fresh water
9	08/19/2018 14:51	Pressure Test					Pressure test lines to 6000 psi
10	08/19/2018 14:55	Pump Spacer	11.5000	6.00	80.00	500.00	Pump 80 bbls spacer at 11.5 ppg
11	08/19/2018 15:12	Pump Lead Cement	13.2000	8.00	303.00	900.00	Pump 303 bbls lead cement at 13.2 ppg (930 sks, 1.83 Y, 9.87 gal/sk)
12	08/19/2018 15:56	Pump Tail Cement	13.5000	8.00	467.00	500.00	Pump 467 bbls tail cement at 13.5 ppg (1770 sks, 1.48 Y, 7.45 gal/sk)
13	08/19/2018 17:02	Other (See comment)					Shutdown
14	08/19/2018 17:04	Clean Pumps and Lines					Clean pumps and lines to the pit
15	08/19/2018 17:10	Drop Top Plug					Drop top plug
16	08/19/2018 17:11	Pump Displacement	8.3400	8.00	360.00	2,000.00	Pump 383 bbls water displacement (20 with R-8L, 340 with biocide & Rescare, 23 bbls fresh water)

EVENT LOG

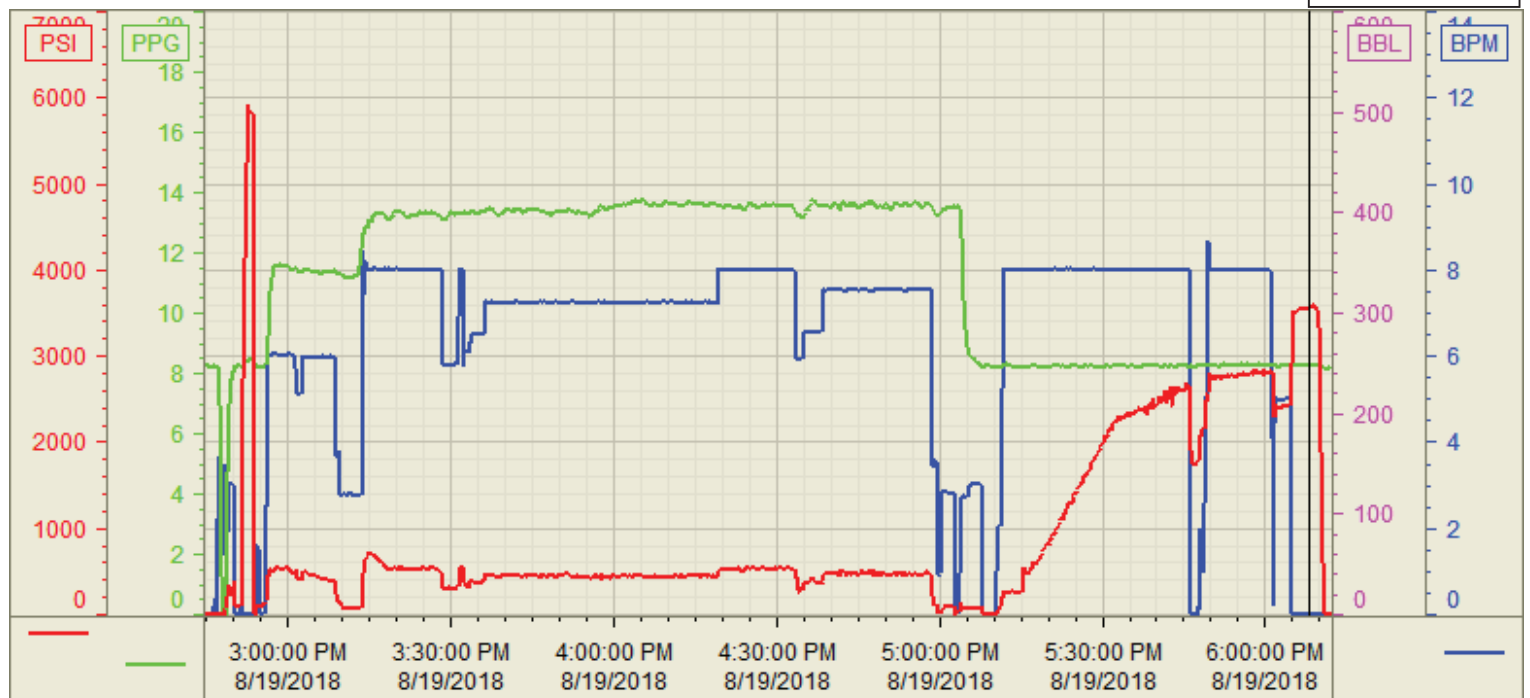


17	08/19/2018 17:45	Spacer Back to Surface					Spacer back to surface at 265 bbls away, 80 bbls spacer to surface
18	08/19/2018 17:58	Cement Back to Surface					Cement back to surface at 340 bbls away, 38 bbls cement to surface
19	08/19/2018 18:01	Other (See comment)	8.3400	5.00	23.00	2,500.00	Slow pump rate to 5 bpm at 360 bbls away
20	08/19/2018 18:05	Land Plug					Land plug at 2500 psi, took to 3600 psi
21	08/19/2018 18:08	Check Floats					Check floats, floats holding, 4 bbls back
22	08/19/2018 18:15	Safety Meeting					Safety meeting
23	08/19/2018 18:30	Rig Down					Rigged down all equipment
24	08/19/2018 21:00	Leave Location					Crew departed location

Customer: Bayswater
Well Number: D-35-36HN
Lease Info: KTC Farms



Print Date/Time
8/19/2018 6:39:38 PM



	Name	Y value	X value/time stamp	Tag name Y
1	DS - Press (PSI)	3565.5	8/19/2018 6:08:12 PM	Cementer\DS_DISCHARGE_PRESS_DIAL
2	DH - Density (PPG)	8.30	8/19/2018 6:08:04 PM	Cementer\DENSITY2_ACTUAL_RATE
3	Combined Rate	0.00 i.	8/19/2018 6:08:09 PM i.	Cementer\Flow_Combined
4				
5				

Source: Control1 6:39:32 PM