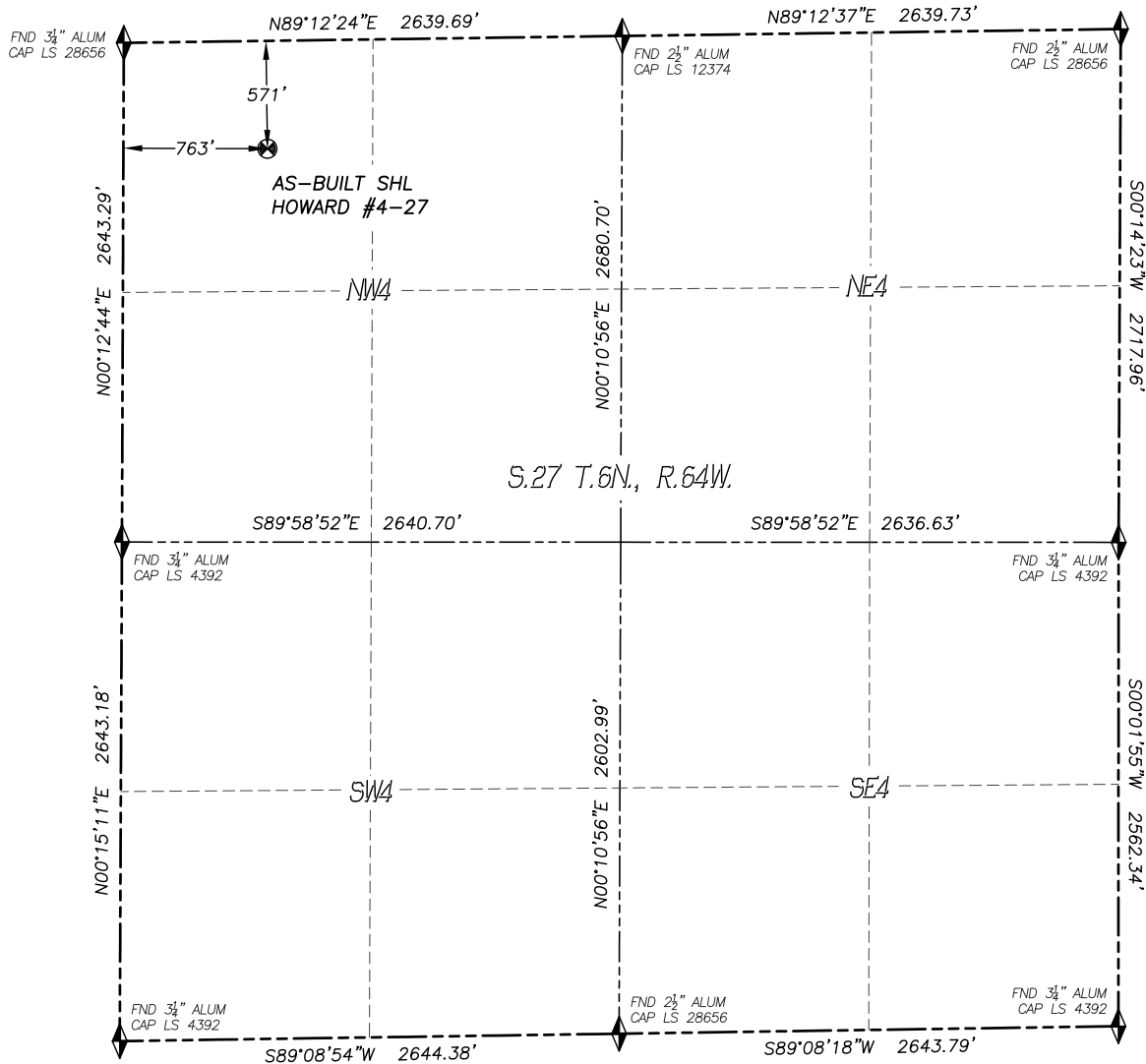


WELL AS-BUILT SURVEY

HOWARD #4-27

SECTION 27, TOWNSHIP 6 NORTH, RANGE 64 WEST OF THE 6TH P.M.

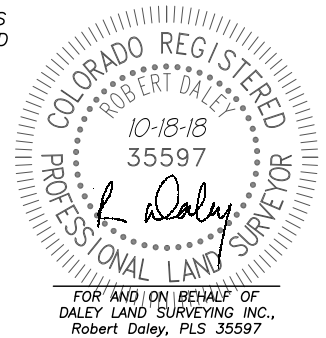


IN ACCORDANCE WITH A REQUEST FROM NOBLE ENERGY INC., DALEY LAND SURVEYING, INC. HAS DETERMINED THE SURFACE LOCATION OF THE HOWARD #4-27 WELL TO BE 571' FNL, 763' FWL, AS MEASURED AT NINETY (90) DEGREES FROM THE SECTION LINES OF SECTION 27, TOWNSHIP 6 NORTH, RANGE 64 WEST, OF THE 6TH PRINCIPAL MERIDIAN, WELD COUNTY, COLORADO.

I HEREBY STATE THAT THIS WELL AS-BUILT SURVEY WAS PREPARED BY ME OR UNDER MY DIRECT SUPERVISION, THAT THE WORK WAS COMPLETED ON 10/9/2018 FOR AND ON BEHALF OF NOBLE ENERGY INC., AND THAT THIS MAP DOES NOT REPRESENT A BOUNDARY SURVEY, IT IS NOT A LAND SURVEY PLAT OR AN IMPROVEMENT SURVEY PLAT AND IT IS NOT TO BE RELIED UPON FOR THE ESTABLISHMENT OF FENCE, BUILDING OR OTHER FUTURE IMPROVEMENT LINES.

NOTES:

- 1) BEARINGS FOR THIS MAP ARE ASSUMED AND BASED UPON GPS OBSERVATIONS MADE BETWEEN MONUMENTS LOCATED AT THE WEST QUARTER CORNER AND THE NORTHWEST CORNER OF SECTION 27, TOWNSHIP 6 NORTH, RANGE 64 WEST.
- 2) HORIZONTAL DATUM IS NAD83.
- 3) VERTICAL DATUM IS NAVD88 AND ORIGINATES FROM THE LOCAL C.O.R.S. NETWORK, UTILIZING THE GEOID12A MODEL.
- 4) SURFACE USE: AGRICULTURAL.
- 5) INST. OPERATOR: SCOTT ESTABROOKS
- 6) LOCATION DETERMINED USING METAL LOCATOR.



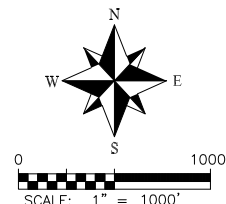
NAD 83 LATITUDE AND LONGITUDE

SURFACE LOCATION:

LATITUDE: N40.46285°
LONGITUDE: W104.54300°
ELEV: 4702'
PDOP: 1.2
QTR/QTR: NW4/NW4

LEGEND

- ◆ FOUND MONUMENT AS DESCRIBED
- ☼ PROPOSED WELL
- ⊙ EXISTING WELL
- BOTTOM HOLE
- ⊘ ABANDONED WELL
- ◆ CALCULATED POSITION



noble energy

DALEY LAND SURVEYING, INC.
PARKER, COLORADO
303.953.9841

LOCATION PICTURES

HOWARD #4-27

SECTION 27, TOWNSHIP 6 NORTH, RANGE 64 WEST OF THE 6TH P.M.

DATE: 10/9/18



LOOKING NORTH



LOOKING WEST



LOOKING EAST



LOOKING SOUTH