

# T5S, R97W, 6th P.M.

## LEGEND:

- └─ = 90° SYMBOL
- = PROPOSED WELLHEAD.
- = TARGET BOTTOM HOLE.
- ▲ = SECTION CORNERS LOCATED. (NAD 83)

1923 Brass Cap,  
1.1' High, T-Post  
Lat: 39.606361°  
Long: 108.273764°

1923 Brass Cap,  
1.2' High  
Lat: 39.606364°  
Long: 108.264375°

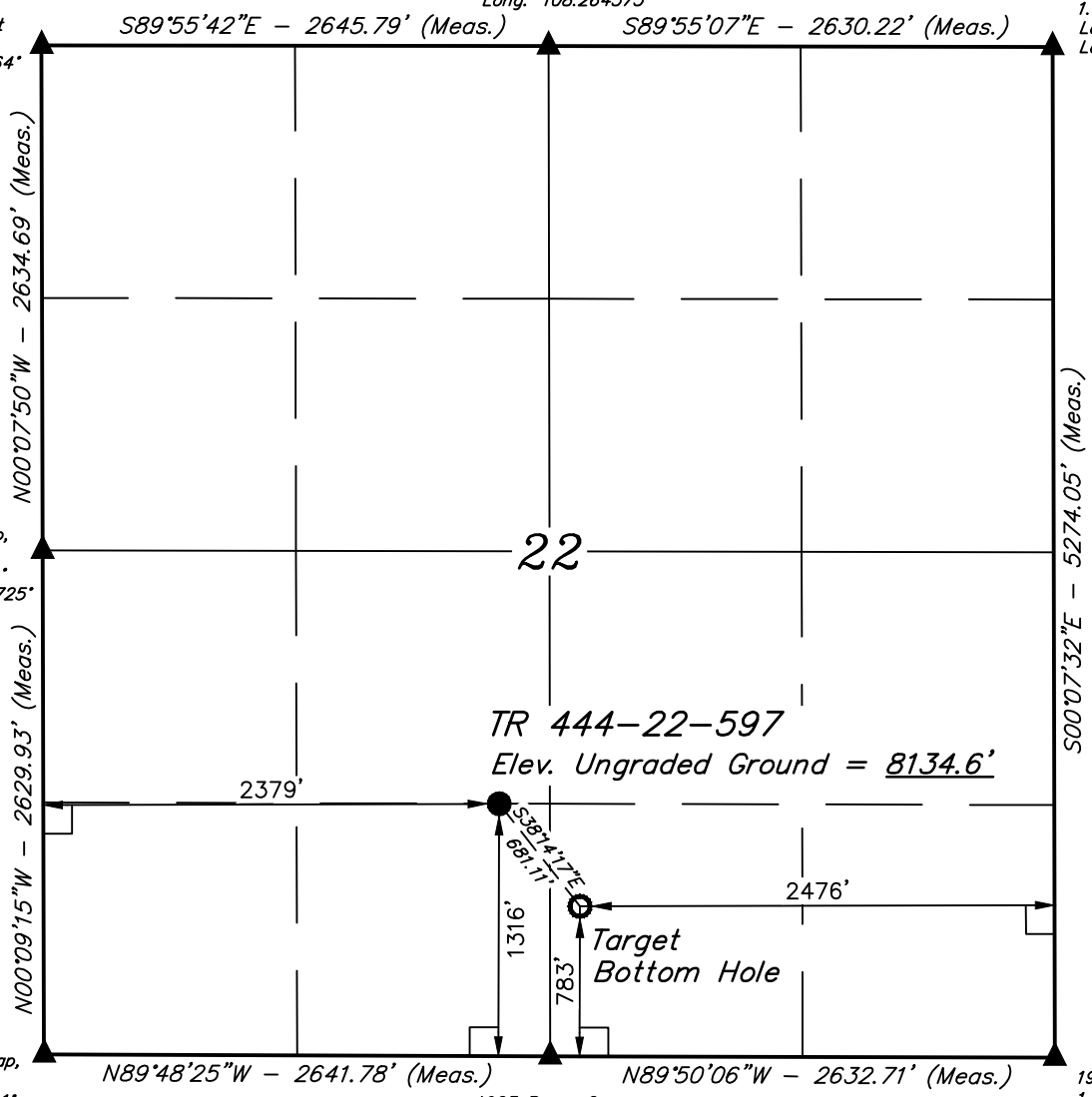
1923 Brass Cap,  
1.4' High, T-Post  
Lat: 39.606367°  
Long: 108.255044°

1923 Brass Cap,  
1.3' High  
Lat: 39.599131°  
Long: 108.273725°

1923 Brass Cap,  
1.3' High  
Lat: 39.591911°  
Long: 108.273683°

1923 Brass Cap,  
1.0' High  
Lat: 39.591900°  
Long: 108.264311°

1923 Brass Cap,  
1.5' High, T-Post  
Lat: 39.591892°  
Long: 108.254972°

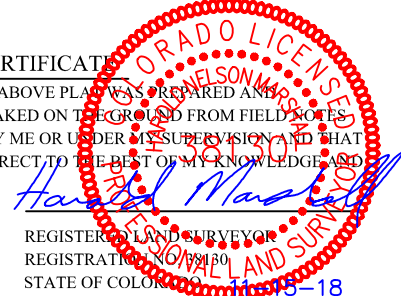


PDOP = 1.4

NAD 83 (SURFACE LOCATION)	NAD 83 (TARGET BOTTOM HOLE)
LATITUDE = 39°35'43.85" (39.595514)	LATITUDE = 39°35'38.57" (39.594048)
LONGITUDE = 108°15'54.95" (108.265264)	LONGITUDE = 108°15'49.56" (108.263766)
STATE PLANE NAD 83 (CO. CEN.)	STATE PLANE NAD 83 (CO. CEN.)
N: 1653653.44 E: 2220864.59	N: 1653106.75 E: 2221270.50

### CERTIFICATION

THIS IS TO CERTIFY THAT THE ABOVE PLAT WAS PREPARED AND LOCATION AS SHOWN WAS STAKED ON THE GROUND FROM FIELD NOTES OF ACTUAL SURVEYS MADE BY ME OR UNDER MY SUPERVISION AND THAT THE SAME ARE TRUE AND CORRECT TO THE BEST OF MY KNOWLEDGE AND BELIEF.



PLAT #1

REGISTERED LAND SURVEYOR  
REGISTRATION NO. 38130  
STATE OF COLORADO 11-15-18

REV: 1 11-15-18 M.D. (BHL MOVE)

**BASIS OF BEARINGS**  
BASIS OF BEARINGS IS A G.P.S. OBSERVATION

**BASIS OF ELEVATION**  
SPOT ELEVATION AT THE NORTHWEST CORNER OF SECTION 30, T5S, R95W, 6th P.M., TAKEN FROM THE FORKED GULCH, QUADRANGLE, COLORADO, GARFIELD COUNTY, 7.5 MINUTE QUAD. (TOPOGRAPHIC MAP) PUBLISHED BY THE UNITED STATES DEPARTMENT OF THE INTERIOR, GEOLOGICAL SURVEY. SAID ELEVATION IS MARKED AS BEING 5966 FEET.



**UELS, LLC**  
Corporate Office \* 85 South 200 East  
Vernal, UT 84078 \* (435) 789-1017



## TEP Rocky Mountain LLC

TR 444-22-597  
SE 1/4 SW 1/4, SECTION 22, T5S, R97W, 6th P.M.  
GARFIELD COUNTY, COLORADO

SURVEYED BY	MARTIN PIERCE, B.K.	07-10-17	SCALE
DRAWN BY	M.D.	07-20-17	1" = 1000'

### WELL LOCATION PLAT