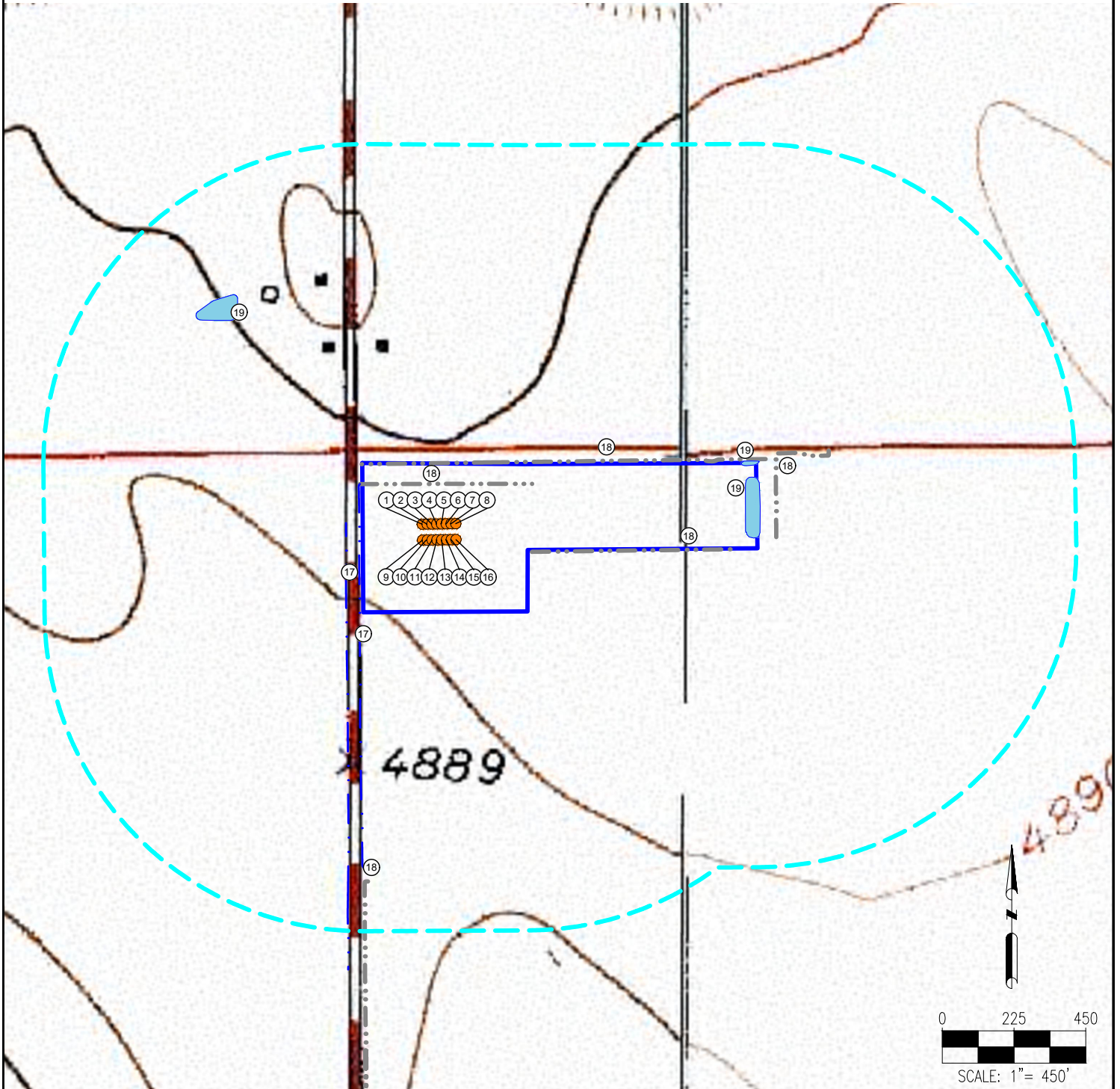


# LEFFLER 26-A PAD HYDROLOGY MAP



MEASUREMENTS ARE MADE FROM THE NEAREST EDGE OF THE DISTURBANCE AREA.

- |                       |                        |                        |  |
|-----------------------|------------------------|------------------------|--|
| 1. LEFFLER BA-26-28HN | 7. LEFFLER F-26-28HN   | 13. LEFFLER K-26-28HC  | 17. DITCHES ARE $\pm 8'$ W, $\pm 52'$ W                                      |
| 2. LEFFLER B-26-28HC  | 8. LEFFLER A-26-28HN   | 14. LEFFLER KA-26-28HN | 18. CONCRETE DITCHES ARE $0'$ , $0'$ , $\pm 2'$ S, $\pm 59'$ E, $\pm 844'$ S |
| 3. LEFFLER C-26-28HN  | 9. LEFFLER H-26-28HC   | 15. LEFFLER L-26-28HN  | 19. IRRIGATION PONDS ARE $0'$ , $0'$ , $\pm 604'$ NW                         |
| 4. LEFFLER D-26-28HN  | 10. LEFFLER HA-26-28HN | 16. LEFFLER G-26-28HN  |  |
| 5. LEFFLER EA-26-28HN | 11. LEFFLER I-26-28HN  |                        |  |
| 6. LEFFLER E-26-28HC  | 12. LEFFLER J-26-28HN  |                        |  |

## LEGEND:

- |  |                  |  |                             |
|--|------------------|--|-----------------------------|
|  | = PROPOSED WELL  |  | = POND                      |
|  | = DITCH          |  | = PROPOSED DISTURBANCE AREA |
|  | = CONCRETE DITCH |  | = 1000' RADIUS              |

DISCLAIMER:  
THIS PLOT DOES NOT REPRESENT A MONUMENTED LAND SURVEY AND SHOULD NOT BE RELIED UPON TO DETERMINE BOUNDARY LINES, PROPERTY OWNERSHIP OR OTHER PROPERTY INTERESTS. PARCEL LINES, IF DEPICTED HAVE NOT BEEN FIELD VERIFIED AND MAY BE BASED UPON PUBLICLY AVAILABLE DATA THAT ALSO HAS NOT BEEN INDEPENDENTLY VERIFIED.

DATA SOURCE:  
TOPO MAP: USGS  
NHD: USGS  
PUBLICLY AVAILABLE DATA SOURCES HAVE NOT BEEN INDEPENDENTLY VERIFIED BY ASCENT.



FIELD DATE:  
**06-01-18**

DRAWING DATE:  
**10-25-18**

BY:  
**DNS**

CHECKED:  
**VQD**

SITE NAME:  
**LEFFLER 26-A PAD**

SURFACE LOCATION:  
**NW 1/4 NW 1/4 SEC. 26, T7N, R66W, 6TH P.M.  
WELD COUNTY, COLORADO**

PREPARED FOR:

**BAYSWATER**  
EXPLORATION AND PRODUCTION, LLC