

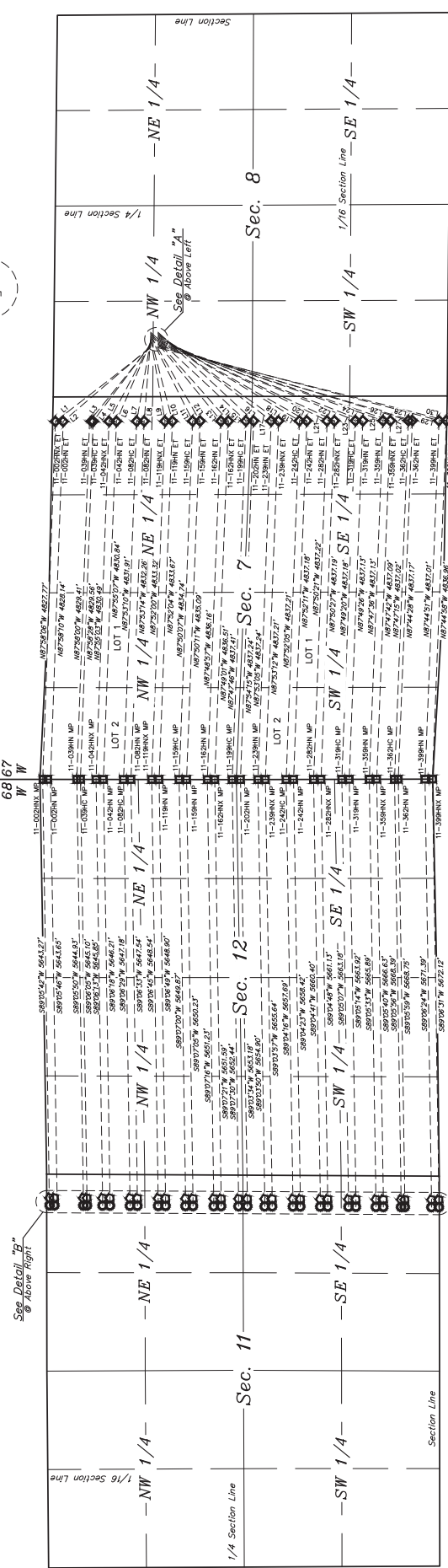
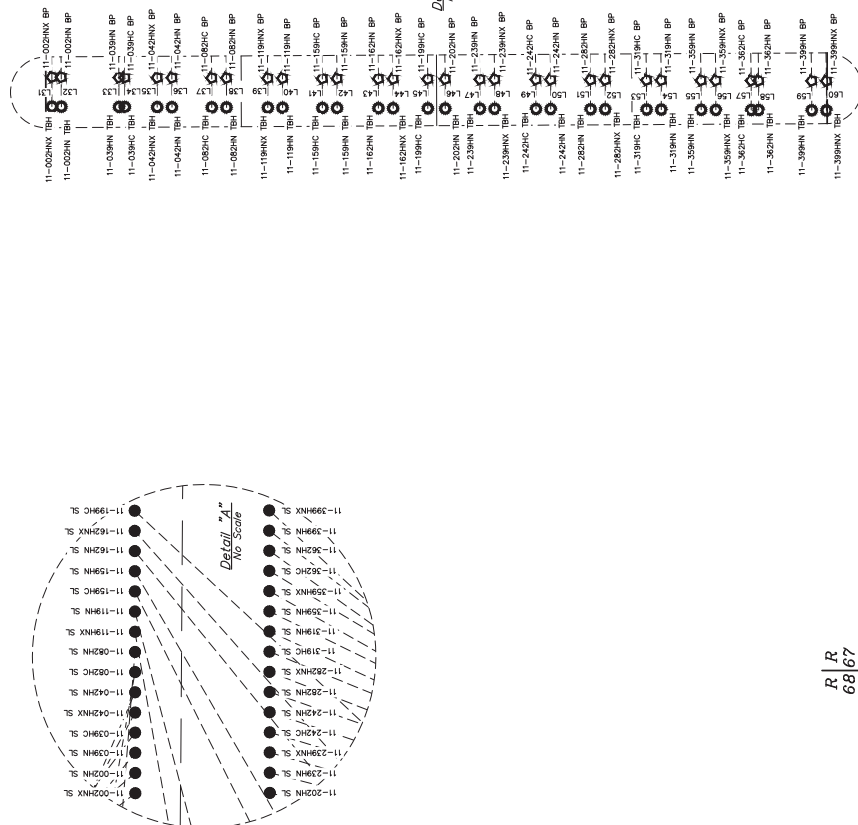


**LEGEND:**

	= WELLHEAD
	= ENTRY FLOW
	= MID POINT
	= BTM PERFORATION
	= TARGET
	= SURFACE FACILITY
	= ENTRY FLOW
	= MID POINT
	= BTM PERFORATION
	= TARGET

LINE TABLE		LINE TABLE	
LINE	DIRECTION LENGTH	LINE	DIRECTION LENGTH
L1	N37°50'04"N	163.443	
L2	N40°35'25"E	1651.28	
L3	N53°16'59"E	1312.07	
L4	N57°18'19"E	1294.63	
L5	N60°38'45"E	1161.23	
L6	N69°38'43"E	1098.51	
L7	N87°07'08"E	1098.62	
L8	N85°07'27"E	1126.54	
L9	S70°02'05"E	1126.54	
L10	S70°02'05"E	1162.41	
L11	S67°39'04"E	1273.66	
L12	S59°54'35"E	1333.66	
L13	S59°54'35"E	1505.64	
L14	S49°52'19"E	1816.76	
L15	S49°52'19"E	1758.05	
L16	S42°51'33"E	1760.13	
L17	S42°51'33"E	1931.05	
L18	S33°57'44"E	2022.36	
L19	S31°04'29"E	2229.41	
L20	S29°08'08"E	2308.01	
L21	S24°52'27"E	2626.05	
L22	S22°14'32"E	2865.63	
L23	S22°14'32"E	2985.63	
L24	S19°21'19"E	3316.52	
L25	S19°21'19"E	3306.24	
L26	S19°24'48"E	3531.22	
L27	S19°24'48"E	3578.66	
L28	S19°24'48"E	3621.28	
L29	S14°42'13"E	4014.28	
L30	S14°42'13"E	4014.28	

LINE TABLE		LINE TABLE	
LINE	DIRECTION LENGTH	LINE	DIRECTION LENGTH
L1	N37°50'04"N	163.443	
L2	N40°35'25"E	1651.28	
L3	N53°16'59"E	1312.07	
L4	N57°18'19"E	1294.63	
L5	N60°38'45"E	1161.23	
L6	N69°38'43"E	1098.51	
L7	N87°07'08"E	1098.62	
L8	N85°07'27"E	1126.54	
L9	S70°02'05"E	1126.54	
L10	S70°02'05"E	1162.41	
L11	S67°39'04"E	1273.66	
L12	S59°54'35"E	1333.66	
L13	S59°54'35"E	1505.64	
L14	S49°52'21"E	1816.76	
L15	S49°52'21"E	1758.05	
L16	S42°51'13"E	1760.13	
L17	S42°51'13"E	1931.65	
L18	S33°57'44"E	2022.36	
L19	S31°04'29"E	2229.41	
L20	S29°08'08"E	2308.01	
L21	S24°52'27"E	2626.05	
L22	S22°14'32"E	2865.63	
L24	S21°13'30"E	2968.63	
L25	S19°21'19"E	3161.62	
L26	S19°22'09"E	3306.24	
L27	S19°54'48"E	3531.22	
L28	S19°54'48"E	3578.66	
L29	S14°42'13"E	3621.28	
L30	S14°42'13"E	4014.28	



07-23-18 D.J.S. (ENTRY POINT, MID-POINT, BTM PERF & TBH MOVES)

**GREAT WESTERN OPERATING COMPANY**

BERRY 1C PAD  
W 1/2 NW 1/4 SECTION 8, T3N, R67W, 6th P.M.  
WELD COUNTY, COLORADO

MULTI-WELL PLAN		FIGURE #5
SURVEYED BY	JAMES FRESHWATER	02-09-18 SCALE
DRAWN BY	CUIVE	06-12-18 1" = 1000'