

BMP LEGEND

	ST SEDIMENT TRAP
	RRP RIP-RAP PAD
	DD DIVERSION DITCH
	RRC RRB FOR CULVERT PROTECTION
	SM SEEDING AND MULCHING

FINISHED GRADE ELEVATION = 4843.5'

NOTE: Earthwork calculations require a fill @ some location stakes for balance. All fill is to be compacted to a minimum of 95% of the maximum dry density obtained by AASHTO method t-99.

REV: 1 07-23-18 D.J.S. (PAD EXPANSION)

- NOTES:
- Round corners at 35' radius or as needed.
 - Construct diversion ditches as needed.
 - Contours shown at 2' intervals.
 - Cut/Fill slopes 1 1/2:1 (Typ.).



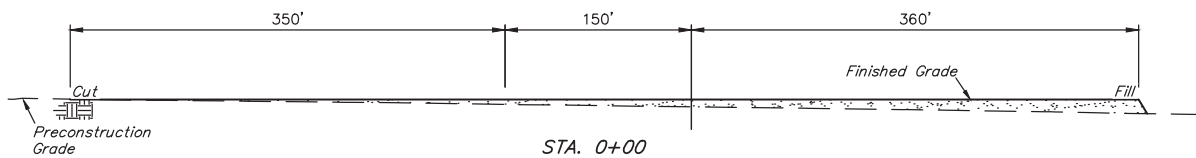
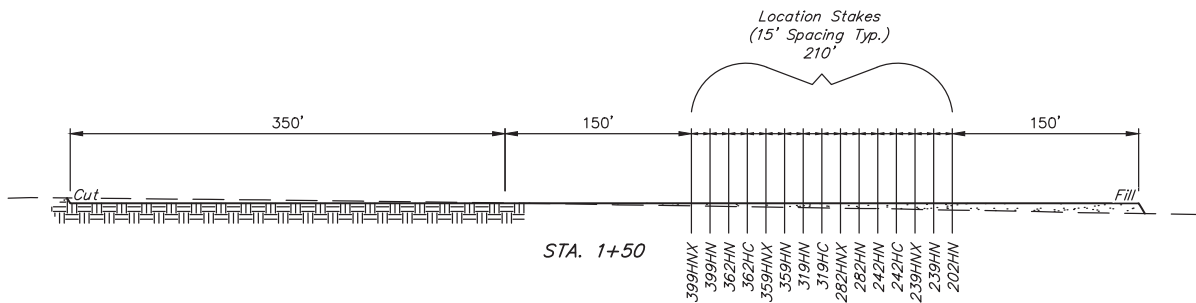
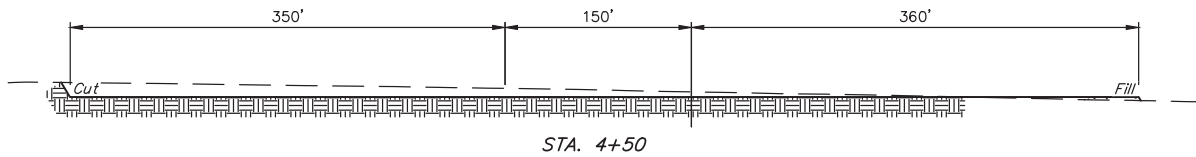
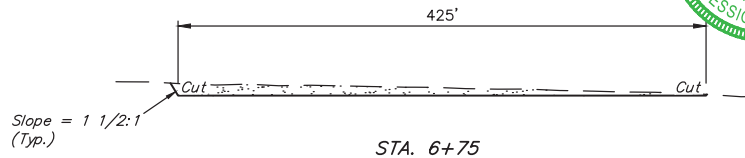
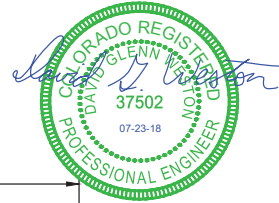
UELS, LLC
Corporate Office * 85 South 200 East
Vernal, UT 84078 * (435) 789-1017

GREAT WESTERN OPERATING COMPANY

BERRY IC PAD
W 1/2 NW 1/4, SECTION 8, T3N, R67W, 6th P.M.
WELD COUNTY, COLORADO

SURVEYED BY	JAMES FRESHWATER, N.W.	04-19-18	SCALE
DRAWN BY	K.B.	06-12-18	1" = 100'
CONSTRUCTION LAYOUT		FIGURE #1	

1" = 40'
X-Section
Scale
1" = 100'



APPROXIMATE EARTHWORK QUANTITIES	
(6") TOPSOIL STRIPPING	9,960 Cu. Yds.
REMAINING LOCATION	17,990 Cu. Yds.
TOTAL CUT	27,950 Cu. Yds.
FILL	17,990 Cu. Yds.
EXCESS MATERIAL	9,960 Cu. Yds.
TOPSOIL	9,960 Cu. Yds.
EXCESS UNBALANCE (After Interim Rehabilitation)	0 Cu. Yds.

APPROXIMATE SURFACE DISTURBANCE AREAS		
	DISTANCE	ACRES
WELL SITE DISTURBANCE	NA	±14.837
30' WIDE ACCESS ROAD R-O-W DISTURBANCE	±186'	±0.128
TOTAL SURFACE USE AREA		±14.965

REV: 1 07-23-18 D.J.S. (PAD EXPANSION)

NOTES:

- Fill quantity includes 5% for compaction.
- Calculations based on 6" of topsoil stripping.
- Cut/Fill slopes 1 1/2:1 (Typ.).

GREAT WESTERN OPERATING COMPANY

BERRY IC PAD
W 1/2 NW 1/4, SECTION 8, T3N, R67W, 6th P.M.
WELD COUNTY, COLORADO



UELS, LLC
Corporate Office * 85 South 200 East
Vernal, UT 84078 * (435) 789-1017

SURVEYED BY	JAMES FRESHWATER, N.W.	04-19-18	SCALE
DRAWN BY	K.B.	06-12-18	AS SHOWN
CONSTRUCTION LAYOUT CROSS SECTIONS FIGURE #2			