

NW. COR.
SEC. 13, T5N, R68W
FOUND 3 1/2" ALUM. CAP
P.L.S. NO. 36061

N. 1/4 COR.
SEC. 13, T5N, R68W
FOUND 2 1/2" ALUM. CAP
L.S. NO. 12374

NW. COR.
SEC. 18, T5N, R67W
FOUND 3 1/2" ALUM. CAP
ILLEGIBLE

N. 1/4 COR.
SEC. 18, T5N, R67W
FOUND 2 1/2" ALUM. CAP
L.S. NO. 30462

N 89°20'26" W 2755.29' (M)

N 89°20'03" W 2746.85' (M)

N 89°41'01" E 2435.87' (M)

WELLBORE CONTINUES
INTO SECTION 14

N 89°40'47" W 13295' GRID
N 89°19'09" W TRUE
S 82°30'13" W MAGNETIC

HEEL LOCATION
75'

73'

687'

744'

NO. 2

PROWANT 18-1HZ
SURFACE LOCATION

N 00°15'16" E 2661.77' (M)

N 00°27'45" E
2654.24' (M)

N 00°25'25" E 2642.13' (M)

T5N, R68W

T5N, R67W 18

N 89°29'48" W
2745.61' (M)

N 89°35'12" W
2748.62' (M)

N 89°50'33" E
2460.65' (M)

W. 1/4 COR.
SEC. 13, T5N, R68W
FOUND 3 1/4" ALUM. CAP
L.S. NO. 34176

CENTER 1/4 COR.
SEC. 13, T5N, R68W
FOUND 2" ALUM. CAP
P.L.S. NO. 11989

W. 1/4 COR.
SEC. 18, T5N, R67W
FOUND 3 1/4" ALUM. CAP
P.L.S. NO. 10855

CENTER 1/4 COR.
SEC. 18, T5N, R67W
FOUND 2 1/2" ALUM. CAP
L.S. NO. 30462

SW. 1/16 COR.
SEC. 13, T5N, R68W
FOUND 2 1/2" ALUM. CAP
P.L.S. NO. 38512

N 89°30'30" W
1369.95' (M)

CS. 1/16 COR.
SEC. 13, T5N, R68W
FOUND 3 1/4" ALUM. CAP
P.L.S. NO. 31159

SURFACE LOCATION: NAD 83
GROUND ELEVATION= 4939.3'
LATITUDE= 40.405074°
LONGITUDE= -104.941943°
LATITUDE= 40°24'18.267"
LONGITUDE= -104°56'30.994"
HEEL LOCATION: NAD 83
LATITUDE= 40.406764°
LONGITUDE= -104.944855°
LATITUDE= 40°24'24.352"
LONGITUDE= -104°56'41.479"
BOTTOM HOLE LOCATION: NAD 83
LATITUDE= 40.407187°
LONGITUDE= -104.992592°
LATITUDE= 40°24'25.873"
LONGITUDE= -104°59'33.331"

SW. COR.
SEC. 18, T5N, R67W
FOUND 3 1/4" ALUM. CAP
P.L.S. NO. 23520

S. 1/4 COR.
SEC. 18, T5N, R67W
FOUND 3 1/4" ALUM. CAP
L.S. NO. 22098

N 89°35'53" W
1368.87' (M)

N 89°26'08" W
1365.96' (M)

N 89°31'00" W 2751.58' (M)

N 89°57'56" E 2485.57' (M)

SW. COR.
SEC. 13, T5N, R68W
FOUND 2" ALUM. CAP
P.L.S. NO. 11989

W. 1/16 COR.
SEC. 13 & SEC. 24, T5N, R68W
FOUND 2" ALUM. CAP
P.L.S. NO. 11989

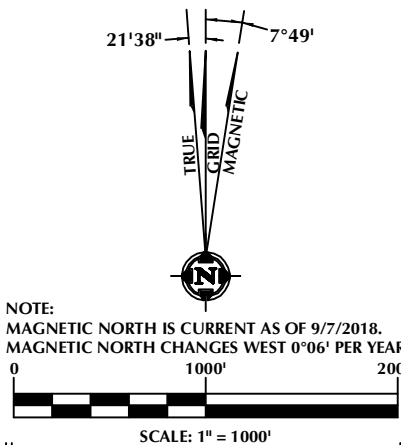
LARIMER COUNTY
WELD COUNTY

CERTIFICATE OF SURVEYOR:

THIS IS TO CERTIFY THAT THE ABOVE PLAT WAS PREPARED FROM FIELD NOTES OF ACTUAL SURVEY MADE BY ME OR UNDER MY SUPERVISION AND TO THE BEST OF MY KNOWLEDGE AND BELIEF THIS CERTIFICATE DOES NOT REPRESENT A LAND SURVEY PLAT OR IMPROVEMENT SURVEY PLAT AS DEFINED BY C.R.S. 10-51-302 AND CANNOT BE RELIED UPON TO DETERMINE OWNERSHIP.

Wrangler Grohs
38603
10/22/18
PROFESSIONAL LAND SURVEYOR
COLORADO REGISTRATION NUMBER 38603

NOTICE:
ACCORDING TO COLORADO STATE LAW YOU MUST COMMENCE ANY LEGAL ACTION BASED UPON ANY DEFECT IN THIS SURVEY WITHIN THREE YEARS AFTER YOU FIRST DISCOVER SUCH DEFECT. IN NO EVENT MAY ANY ACTION BASED UPON ANY DEFECT IN THIS SURVEY BE COMMENCED MORE THAN TEN YEARS FROM THE DATE ON THE CERTIFICATION SHOWN HEREON.



NOTES:

- ▲ INDICATES SECTION CORNER.
- INDICATES CALCULATED CORNER.
- ELEVATION BASED ON NAVD88 (GEOID12B).
- BASIS OF BEARING DERIVED FROM COLORADO COORDINATE SYSTEM OF 1983 NORTH ZONE.
- ALL MEASURED DISTANCES ARE GRID.
- COMBINED SCALE FACTOR: .99972603 CALCULATED FROM THE NE. CORNER OF SECTION 18, T5N, R67W.
- OPERATOR: PRESTON KNUSTEN / PDOP = 2.2.
- SEE ADDENDUM TO WELL LOCATION CERTIFICATE FOR EXISTING IMPROVEMENTS WITHIN 500' OF THE WELL PAD.
- WELL FOOTAGES ARE MEASURED AT RIGHT ANGLES TO THE SECTION LINES.
- THE BOTTOM OF HOLE BEARS N89°40'47"W 13295' FROM THE HEEL LOCATION.
- NO. 2 AS SHOWN HEREON IS GOVERNMENT LOT 2 PER THE ORIGINAL GLO SURVEY.

WELL PAD - PROWANT 4-18HZ

PROWANT 18-1HZ
WELL LOCATION CERTIFICATE
687' FNL & 744' FWL LOT 2 (NWNW) (SURFACE)
LOCATED IN SECTION 18, T5N, R67W, 6TH P.M.
WELD COUNTY, COLORADO
73' FNL & 75' FEL NENE (HEEL)
LOCATED IN SECTION 13
51' FSL & 2593' FEL SWSE (BOTTOM)
LOCATED IN SECTION 10, T5N, R68W, 6TH P.M.
LARIMER COUNTY, COLORADO

Kerr-McGee Oil &
Gas Onshore L.P.
1099 18th Street
Denver, Colorado 80202



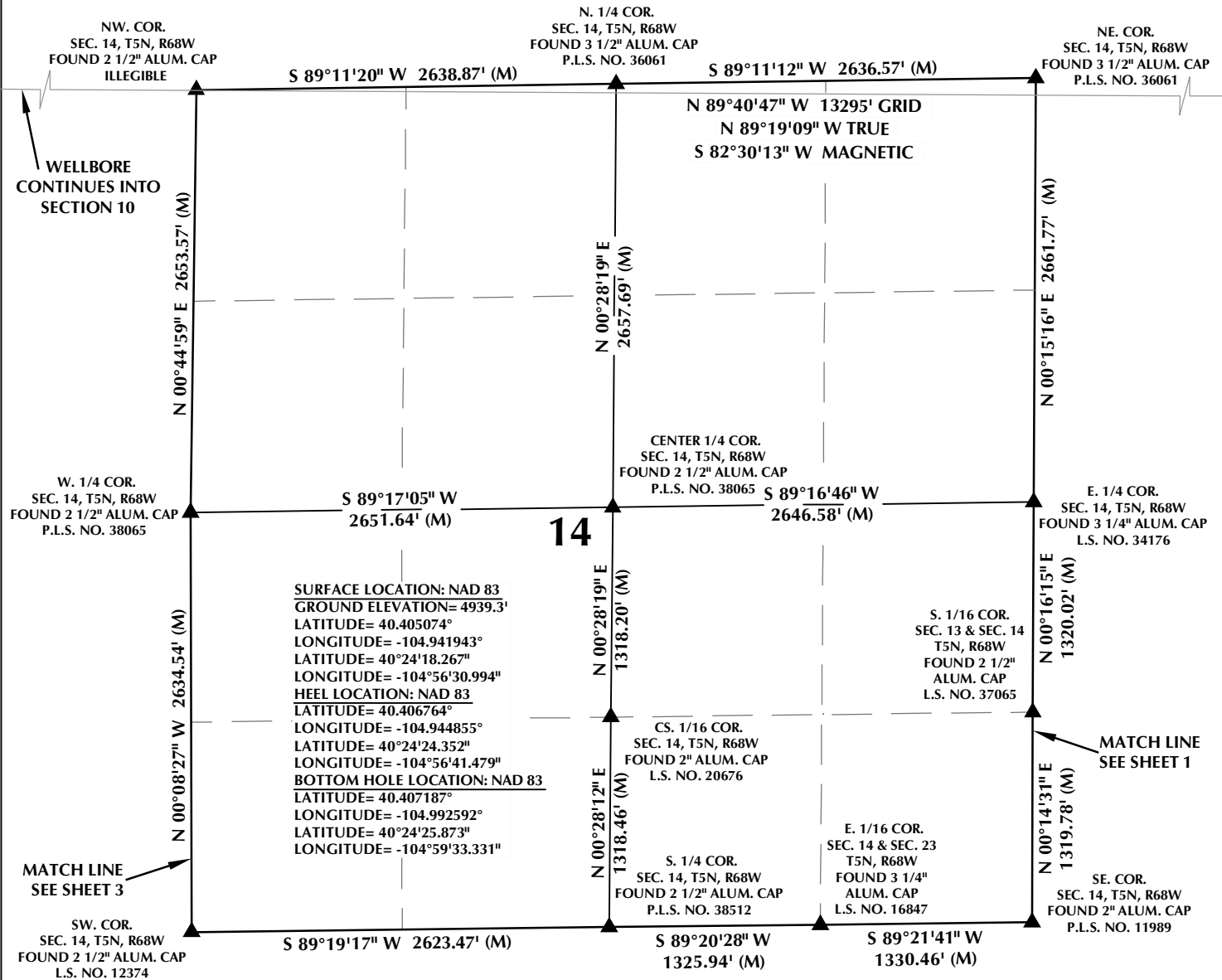
CONSULTING, LLC

SHERIDAN OFFICE
1095 Saberton Avenue
Sheridan, Wyoming 82801
Phone 307-674-0609

LOVELAND OFFICE
6706 North Franklin Avenue
Loveland, Colorado 80538
Phone 970-776-4331

DRAFTED BY:	LMO	CHECKED BY:	WJG	SHEET NO:
DATE DRAFTED:	10/12/18	DATE SURVEYED:	9/7/18	1
REVISED:	10/22/18	FILE NAME:	16-54	1 OF 3

T5N, R68W

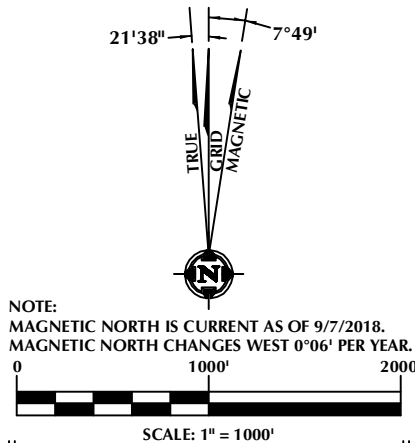


CERTIFICATE OF SURVEYOR:

THIS IS TO CERTIFY THAT THE ABOVE PLAT WAS PREPARED FROM FIELD NOTES OF ACTUAL SURVEY MADE BY ME OR UNDER MY SUPERVISION AND TO THE BEST OF MY KNOWLEDGE AND BELIEF THIS CERTIFICATE DOES NOT REPRESENT A LAND SURVEY PLAT OR IMPROVEMENT SURVEY PLAT AS DEFINED BY C.R.S. § 251-302 AND CANNOT BE RELIED UPON TO DETERMINE OWNERSHIP.

Wrangler Grohs
 38603
 10/22/18
 WRANGLER GROHS
 PROFESSIONAL LAND SURVEYOR
 COLORADO REGISTRATION NUMBER 38603

NOTICE:
 ACCORDING TO COLORADO STATE LAW YOU MUST COMMENCE ANY LEGAL ACTION BASED UPON ANY DEFECT IN THIS SURVEY WITHIN THREE YEARS AFTER YOU FIRST DISCOVER SUCH DEFECT. IN NO EVENT MAY ANY ACTION BASED UPON ANY DEFECT IN THIS SURVEY BE COMMENCED MORE THAN TEN YEARS FROM THE DATE ON THE CERTIFICATION SHOWN HEREON.



NOTES:

- ▲ INDICATES SECTION CORNER.
- INDICATES CALCULATED CORNER.
- ELEVATION BASED ON NAVD88 (GEOID12B).
- BASIS OF BEARING DERIVED FROM COLORADO COORDINATE SYSTEM OF 1983 NORTH ZONE.
- ALL MEASURED DISTANCES ARE GRID.
- COMBINED SCALE FACTOR: .99972603 CALCULATED FROM THE NE CORNER OF SECTION 18, T5N, R67W.
- OPERATOR: PRESTON KNUSTEN / PDOP = 2.2.
- SEE ADDENDUM TO WELL LOCATION CERTIFICATE FOR EXISTING IMPROVEMENTS WITHIN 500' OF THE WELL PAD.
- WELL FOOTAGES ARE MEASURED AT RIGHT ANGLES TO THE SECTION LINES.
- THE BOTTOM OF HOLE BEARS N89°40'47"W 13295' FROM THE HEEL LOCATION.

WELL PAD - PROWANT 4-18HZ

PROWANT 18-1HZ
 WELL LOCATION CERTIFICATE
 687' FNL & 744' FWL LOT 2 (NWNW) (SURFACE)
 LOCATED IN SECTION 18, T5N, R67W, 6TH P.M.
 WELD COUNTY, COLORADO
 73' FNL & 75' FEL NENE (HEEL)
 LOCATED IN SECTION 13
 51' FSL & 2593' FEL SWSE (BOTTOM)
 LOCATED IN SECTION 10, T5N, R68W, 6TH P.M.
 LARIMER COUNTY, COLORADO

**Kerr-McGee Oil &
 Gas Onshore L.P.**
 1099 18th Street
 Denver, Colorado 80202



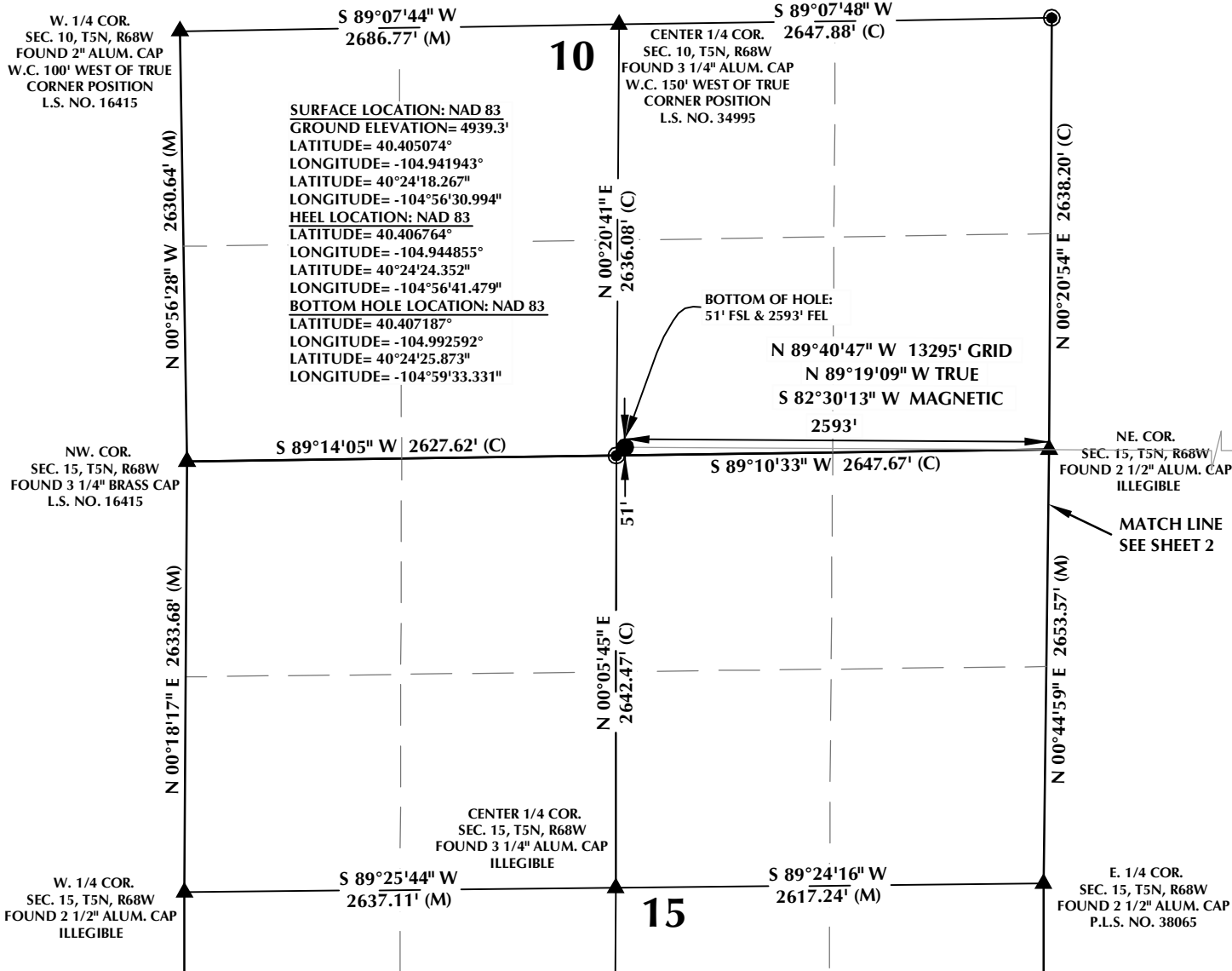
CONSULTING, LLC

SHERIDAN OFFICE
 1095 Saberton Avenue
 Sheridan, Wyoming 82801
 Phone 307-674-0609

LOVELAND OFFICE
 6706 North Franklin Avenue
 Loveland, Colorado 80538
 Phone 970-776-4331

DRAFTED BY:	LMO	CHECKED BY:	WJG	SHEET NO:
DATE DRAFTED:	10/12/18	DATE SURVEYED:	9/7/18	2
REVISED:	10/22/18	FILE NAME:	16-54	2 OF 3

T5N, R68W

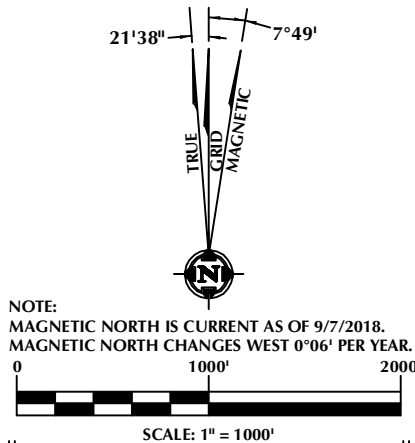


CERTIFICATE OF SURVEYOR:

THIS IS TO CERTIFY THAT THE ABOVE PLAT WAS PREPARED FROM FIELD NOTES OF ACTUAL SURVEY MADE BY ME OR UNDER MY SUPERVISION AND TO THE BEST OF MY KNOWLEDGE AND BELIEF THIS CERTIFICATE DOES NOT REPRESENT A LAND SURVEY PLAT OR IMPROVEMENT SURVEY PLAT AS DEFINED BY C.R.S. § 251-302 AND CANNOT BE RELIED UPON TO DETERMINE OWNERSHIP.

Wrangler Grohs
 38603
 10/22/18
 WRANGLER GROHS
 PROFESSIONAL LAND SURVEYOR
 COLORADO REGISTRATION NUMBER 38603

NOTICE:
 ACCORDING TO COLORADO STATE LAW YOU MUST COMMENCE LEGAL ACTION BASED UPON ANY DEFECT IN THIS SURVEY WITHIN THREE YEARS AFTER YOU FIRST DISCOVER SUCH DEFECT. IN NO EVENT MAY ANY ACTION BASED UPON ANY DEFECT IN THIS SURVEY BE COMMENCED MORE THAN TEN YEARS FROM THE DATE ON THE CERTIFICATION SHOWN HEREON.



NOTES:

- ▲ INDICATES SECTION CORNER.
- INDICATES CALCULATED CORNER.
- ELEVATION BASED ON NAVD88 (GEOID12B).
- BASIS OF BEARING DERIVED FROM COLORADO COORDINATE SYSTEM OF 1983 NORTH ZONE.
- ALL MEASURED DISTANCES ARE GRID.
 COMBINED SCALE FACTOR: .99972603 CALCULATED FROM THE NE. CORNER OF SECTION 18, T5N, R67W.
- OPERATOR: PRESTON KNUSTEN / PDOP = 2.2.
- SEE ADDENDUM TO WELL LOCATION CERTIFICATE FOR EXISTING IMPROVEMENTS WITHIN 500' OF THE WELL PAD.
- WELL FOOTAGES ARE MEASURED AT RIGHT ANGLES TO THE SECTION LINES.
- THE BOTTOM OF HOLE BEARS N89°40'47"W 13295' FROM THE HEEL LOCATION.

WELL PAD - PROWANT 4-18HZ

PROWANT 18-1HZ
WELL LOCATION CERTIFICATE
 687' FNL & 744' FWL LOT 2 (NWNW) (SURFACE)
 LOCATED IN SECTION 18, T5N, R67W, 6TH P.M.
 WELD COUNTY, COLORADO
 73' FNL & 75' FEL NENE (HEEL)
 LOCATED IN SECTION 13
 51' FSL & 2593' FEL SWSE (BOTTOM)
 LOCATED IN SECTION 10, T5N, R68W, 6TH P.M.
 LARIMER COUNTY, COLORADO

**Kerr-McGee Oil &
 Gas Onshore L.P.**
 1099 18th Street
 Denver, Colorado 80202

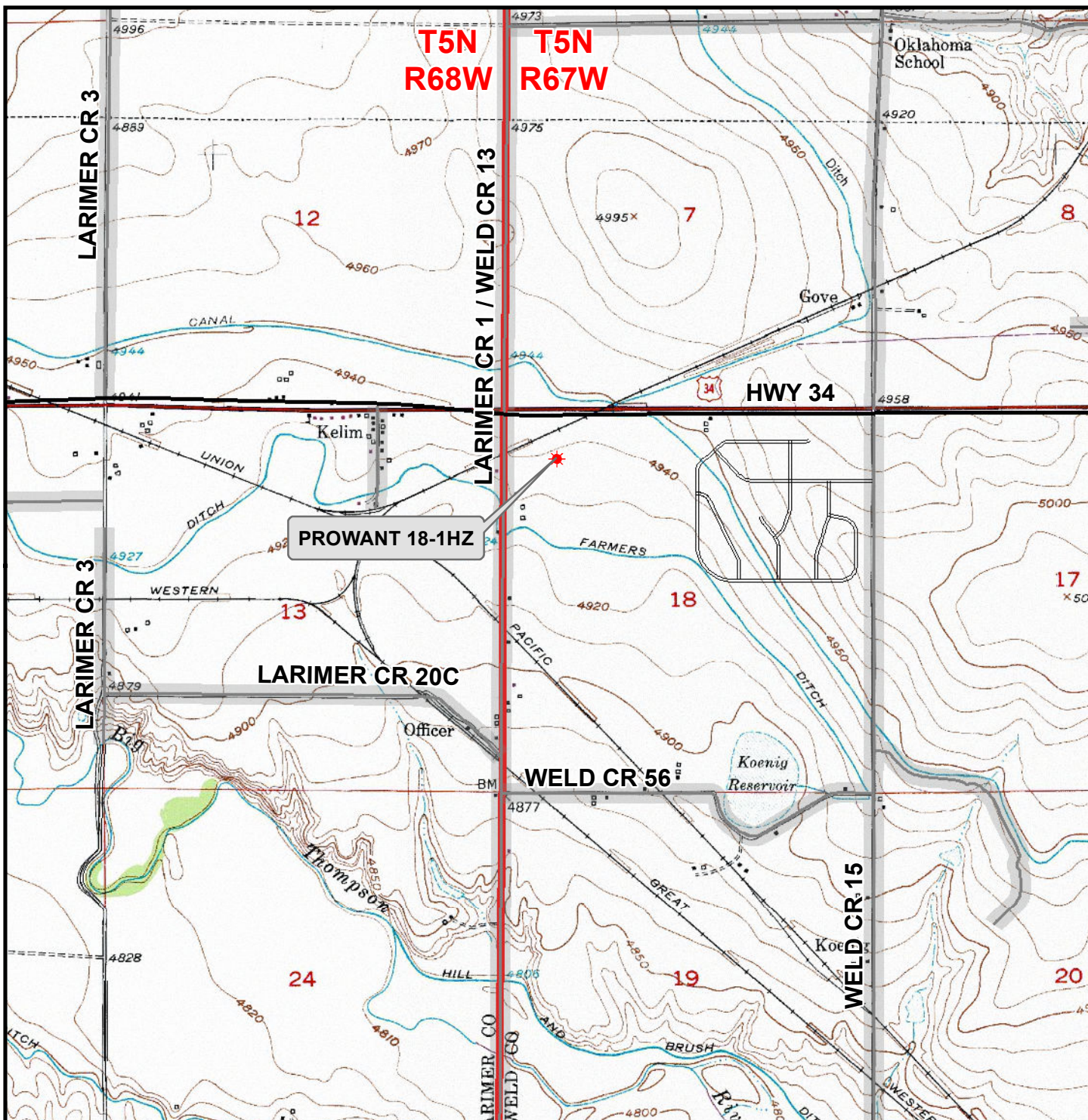


CONSULTING, LLC

SHERIDAN OFFICE
 1095 Saberton Avenue
 Sheridan, Wyoming 82801
 Phone 307-674-0609

LOVELAND OFFICE
 6706 North Franklin Avenue
 Loveland, Colorado 80538
 Phone 970-776-4331

DRAFTED BY:	LMO	CHECKED BY:	WJG	SHEET NO:
DATE DRAFTED:	10/12/18	DATE SURVEYED:	9/7/18	3
REVISED:	10/22/18	FILE NAME:	16-54	3 OF 3



Legend

- ★ Well - Proposed
 Road - Primitive - Existing
 Road - County - Existing
 Road - Improved - Existing
 Road - Highway - Existing

WELL PAD - PROWANT 4-18HZ
GENERAL LOCATION MAP
PROWANT 18-1HZ
LOCATED IN SECTION 18
T5N, R67W, 6th P.M.
WELD COUNTY, COLORADO

Kerr-McGee Oil & Gas Onshore L.P.
 1099 18th Street
 Denver, Colorado 80202



CONSULTING, LLC

SHERIDAN OFFICE
 1095 Saberton Avenue
 Sheridan, Wyoming 82801
 Phone 307-674-0609

LOVELAND OFFICE
 6706 North Franklin Avenue
 Loveland, Colorado 80538
 Phone 970-776-4331



SCALE: 1" = 2,000ft

NAD83 CO-Nft

DRAWN: DP

DATE: 12 Oct 2018

REVISED:

DATE: