



WCR Properties 41-5/Spaur 1-5 Tank Battery - Site Diagram

Legend

- Soil Sample (7/26/2018)
- Soil Sample (8/3/2018)
- Soil Sample (8/7/2018)
- Soil Sample (8/9/2018)
- Groundwater Sample (8/6/2018)
- Groundwater Sample (8/7/2018)
- Crude Oil Tank
- Former Produced Water Sump
- Former Equipment
- Former Secondary Containment
- Excavation Extent (7/26/2018)
- Excavation Extent (Final)

Sample Location

B: benzene
T: toluene
E: ethylbenzene
X: xylenes
TPH: total petroleum hydrocarbons

Bold values exceed COGCC Table
910-1 allowable concentrations

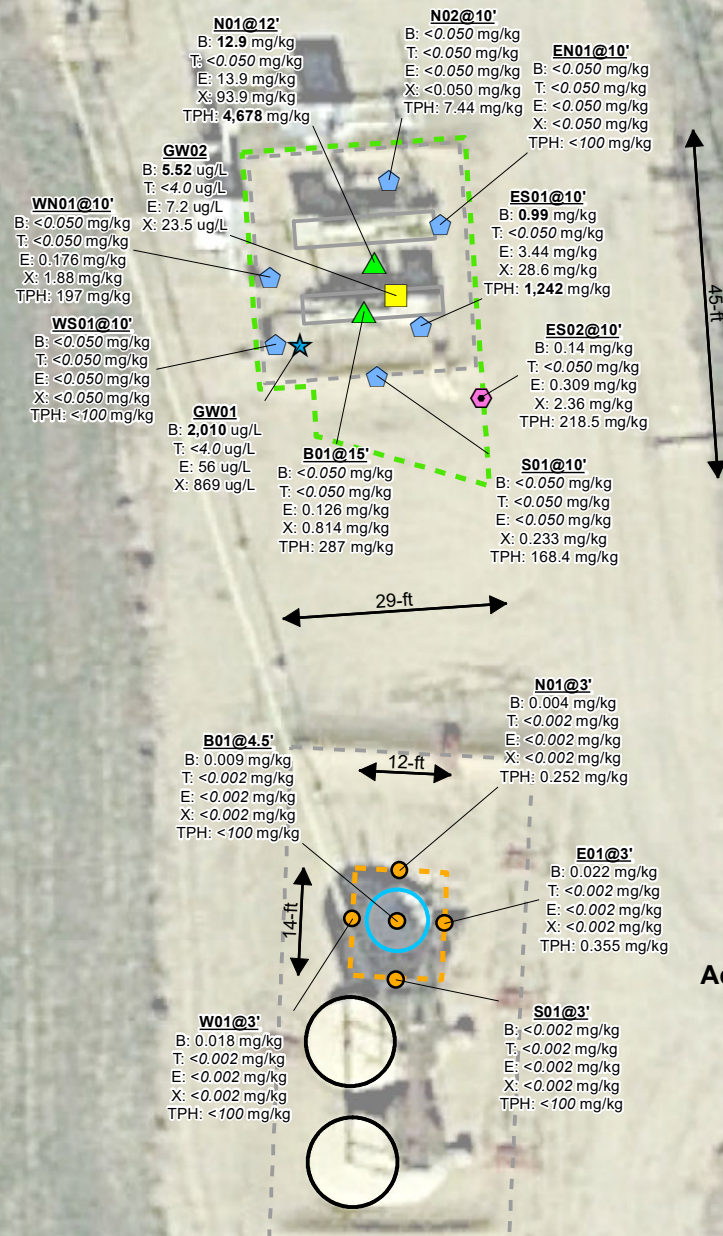
Site Characteristics

Legal Location: NENE, Sec 5, T3N R67W
County: Weld
Land Use: Cropland
Topography: 3-9% Slopes
Run-Off Risk: Medium
Soil Type: Thedalund loam

REVISED	BY	COMMENT
8/15/2018	BJB	Figure 1

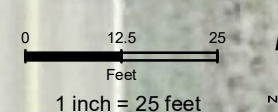


Apex Companies, LLC
beau.bergstrom@apexco.com
M:\Projects\Anadarko\DJL_Basin\Remediation\WCR_41-5_TB\WCR_41-5_TB_Fig1.dwg 20180813.mxd



Cropland

Access Road



For illustration purposes, spatial data in this diagram (e.g. sample points, excavation perimeter) is representative of field observations, and for illustration purposes may have been adjusted to align with aerial imagery and other pictured spatial data. Spatial data (e.g. ESRI shapefiles, Google Earth KMZ) provided separately from this diagram, may not be consistent with what is presented in this site diagram, due to adjustments made for illustrative purposes.