

OPERATOR: **Extraction Oil & Gas**  
WELL NAME: **Berthoud Farms 8E-10-9N**  
FIELD NAME: DJ Basin - Wattenberg  
DRILLING RIG: Patterson 901  
API #: 05-123-45721

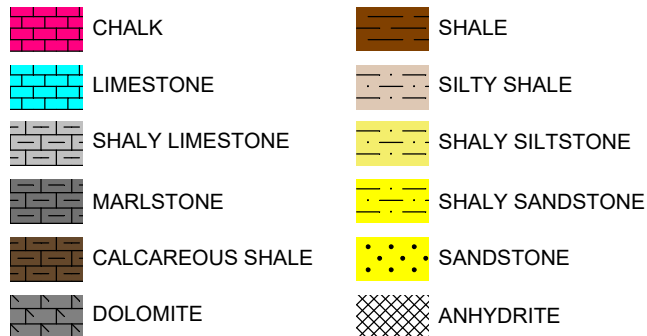
LAT/LONG: 40.324429, -105.039911  
SURFACE HOLE: NESE S7-T4N-R68W, 1544' FSL, 840' FEL  
BOTTOM HOLE: S12-T4S-R69W, 2644' FSL, 460' FWL



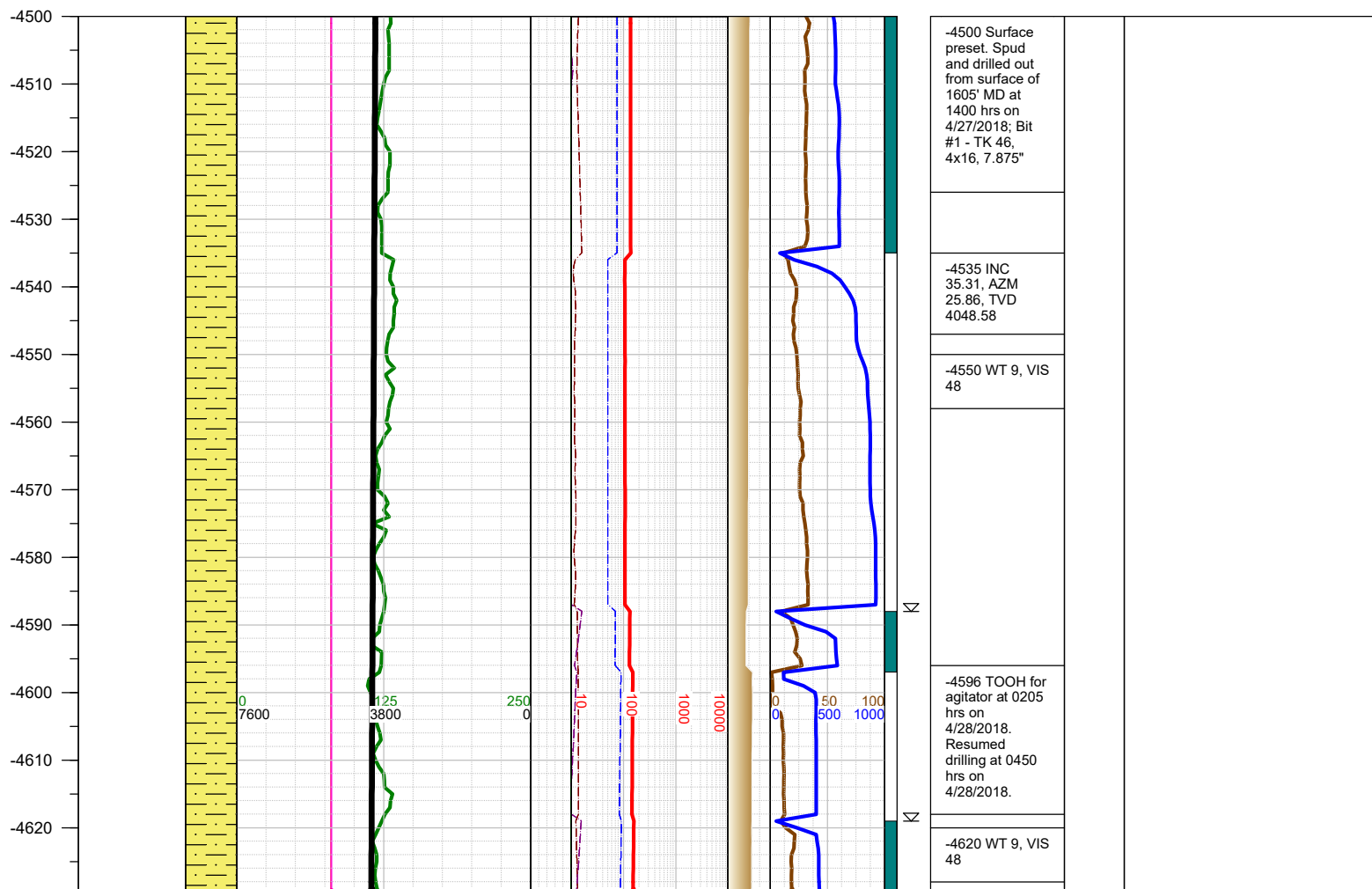
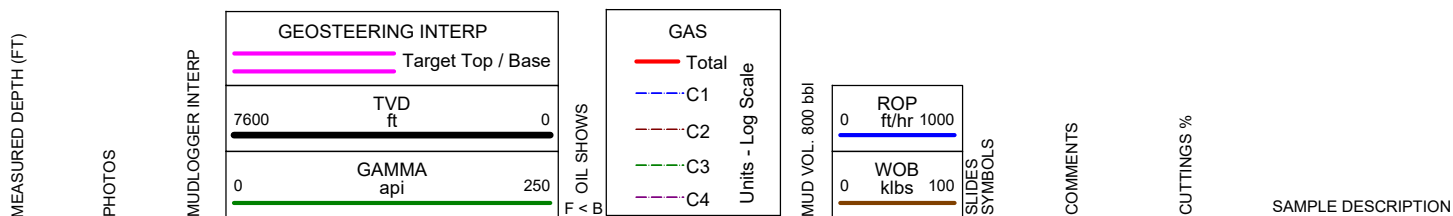
Earth Science Agency, LLC

COUNTY: Weld  
STATE: Colorado  
GROUND ELEVATION: 5033'  
KELLY BUSHING: 5062'  
DRILLING FLUID: OBM  
TVD VS. MD: 6176' / 10595'  
SPUD DATE: April 27, 2018  
TD DATE: April 29, 2018  
  
DEPTHS LOGGED: 4500' - 10595'  
DATES LOGGED: April 27, 2018 - April 29, 2018  
GEOLOGISTS: Blake Eatherton, Levi Heintzelman  
SCALE: 5" = 100'

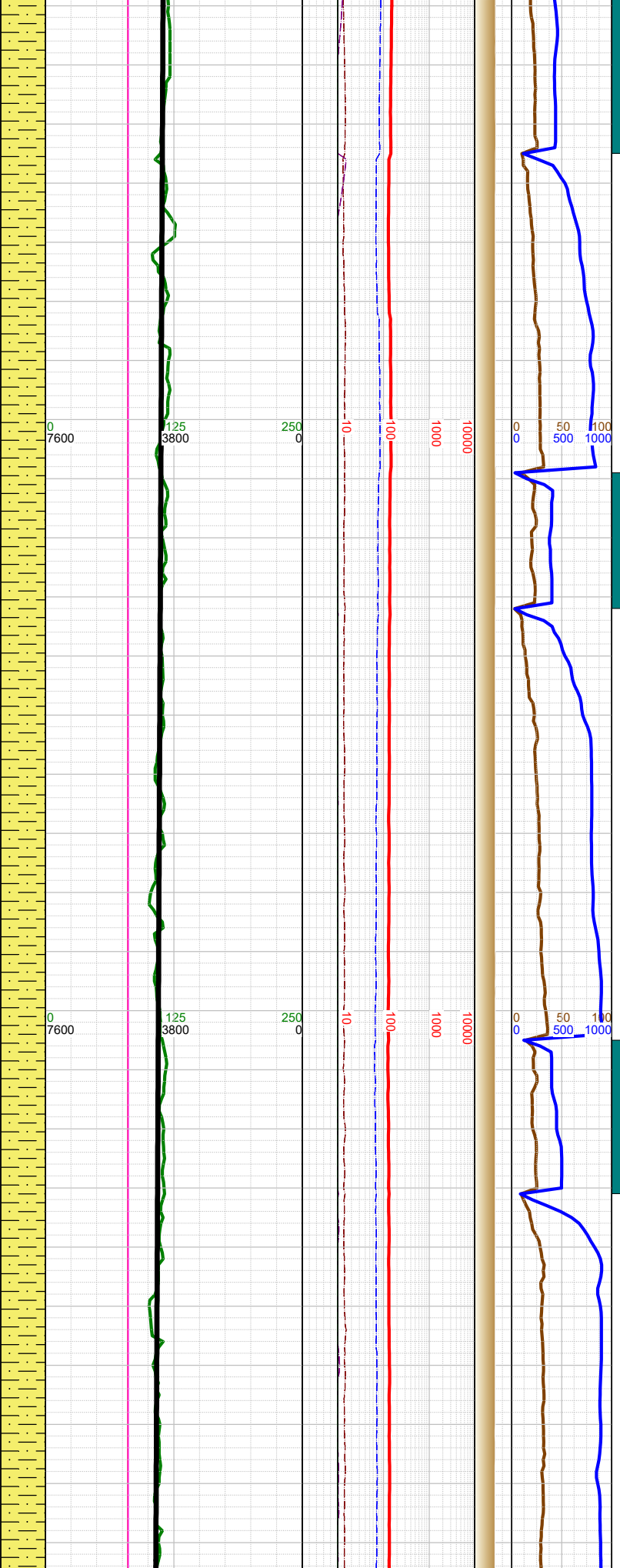
#### LEGEND



FORMATION CONNECTION MIDNIGHT NEW BIT GAS SHOW FAULT



-4630  
-4640  
-4650  
-4660  
-4670  
-4680  
-4690  
-4700  
-4710  
-4720  
-4730  
-4740  
-4750  
-4760  
-4770  
-4780  
-4790  
-4800  
-4810  
-4820  
-4830  
-4840  
-4850  
-4860  
-4870  
-4880  
-4890



-4656 INC  
37.78, AZM  
29.73, TVD  
4145.8

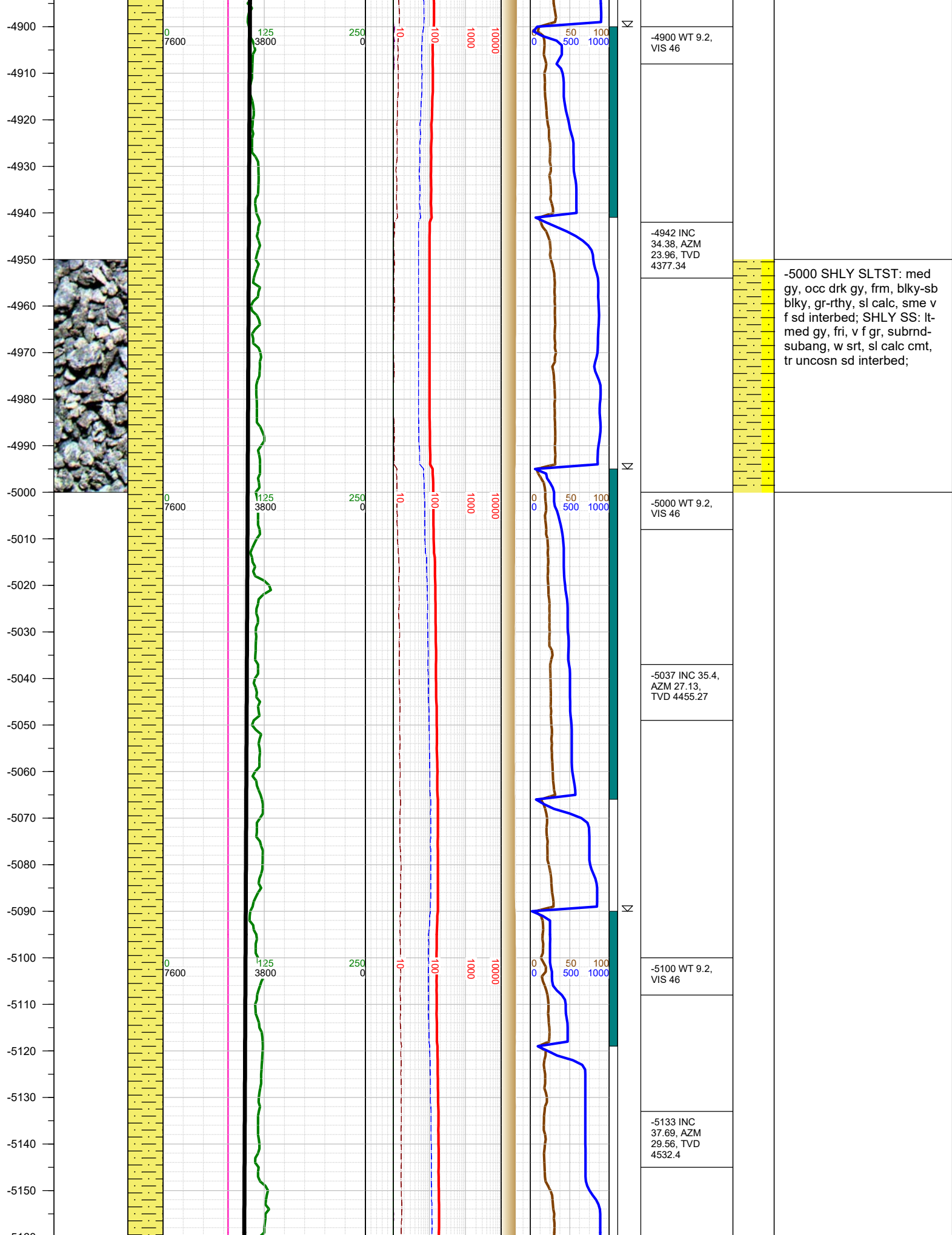
-4700 WT 9.2,  
VIS 46

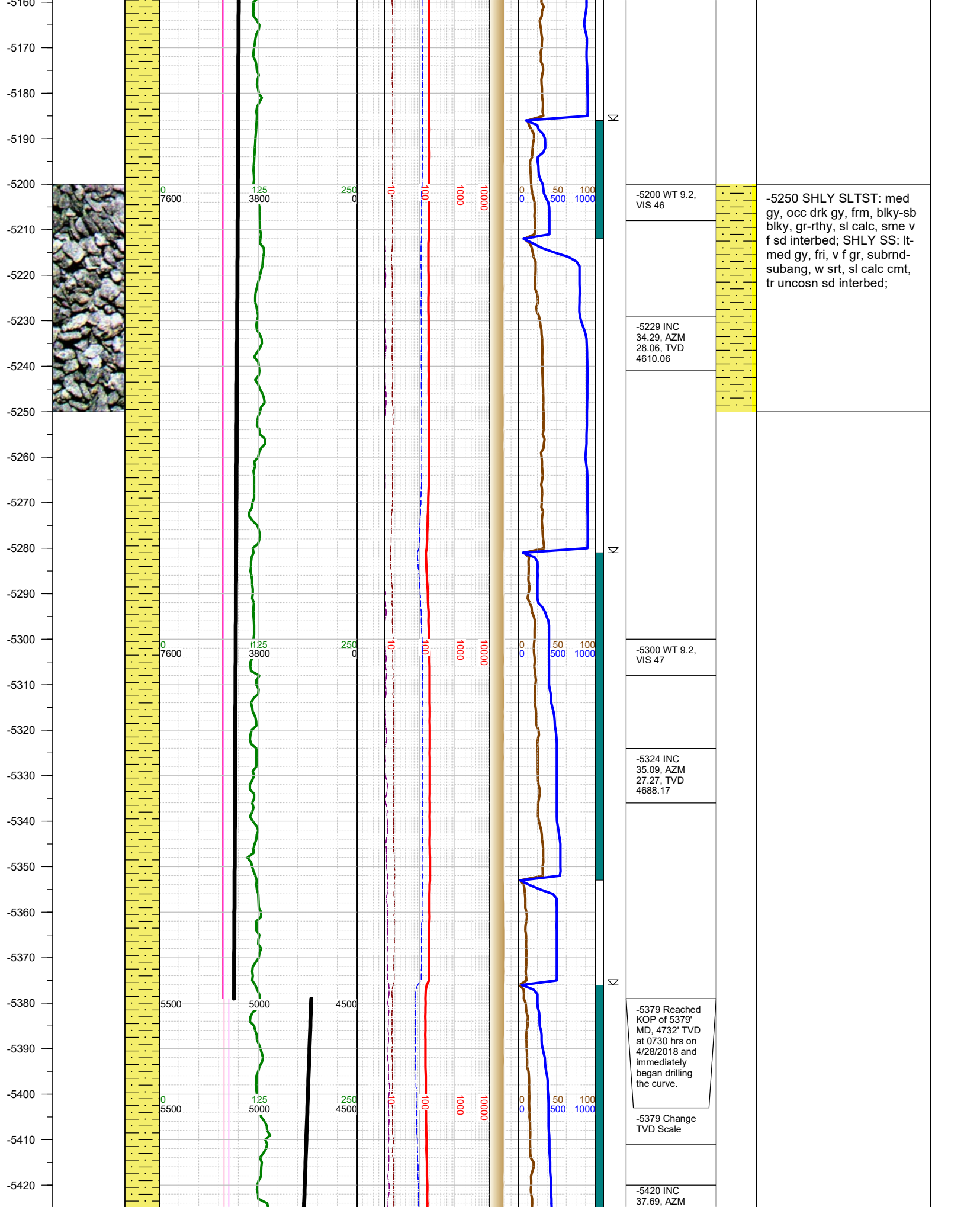
-4751 INC  
36.81, AZM  
29.03, TVD  
4221.37

-4800 WT 9.2,  
VIS 46

-4847 INC  
34.91, AZM  
28.24, TVD  
4299.17

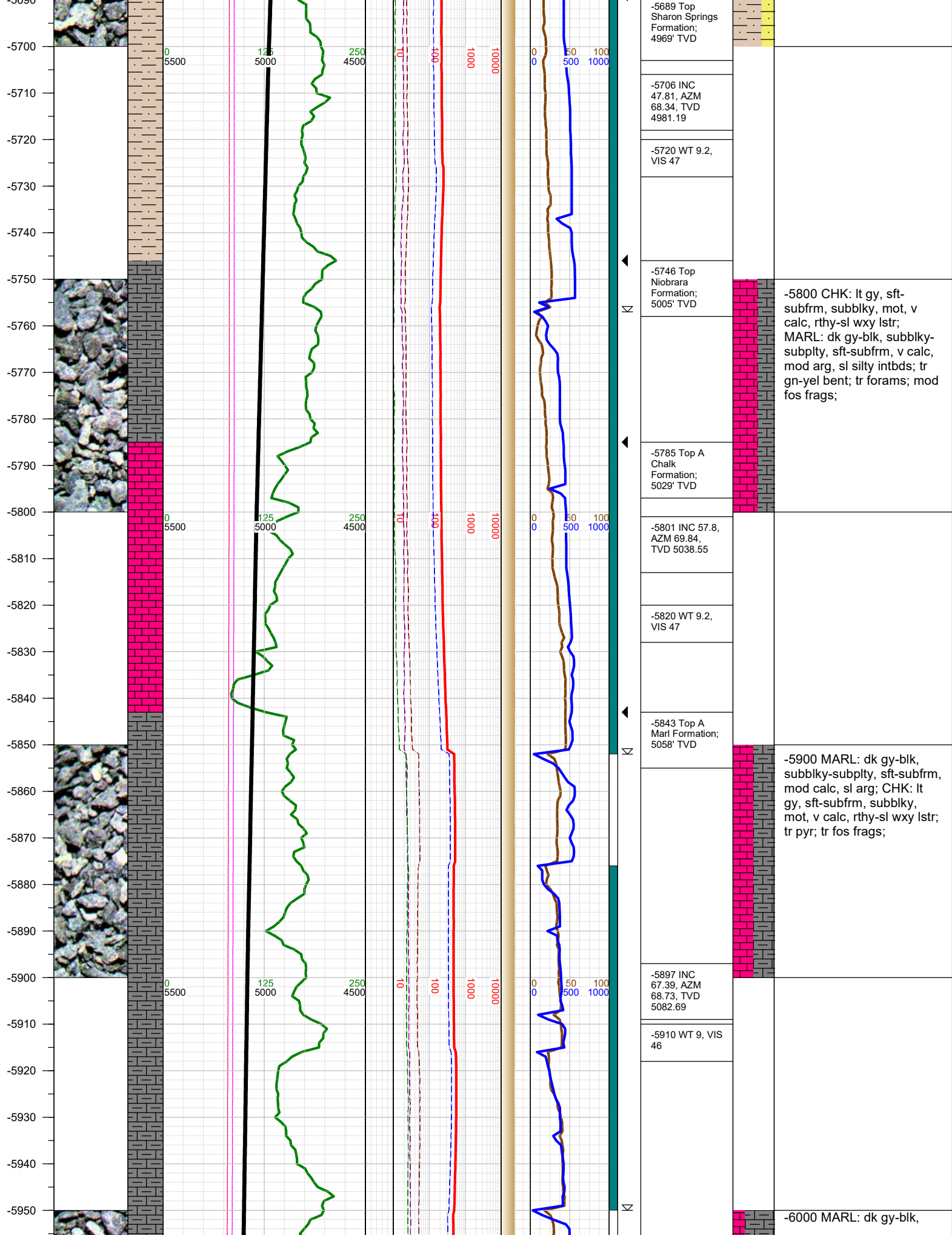
-4750 SHLY SLTST: med  
gy, occ drk gy, frm, blk-y-sb  
blk-y, gr-rthy, sl calc, sme v  
f sd interbed; SHLY SS: lt-  
med gy, fri, v f gr, subrnd-  
subang, w srt, sl calc cmt,  
tr uncossn sd interbed;

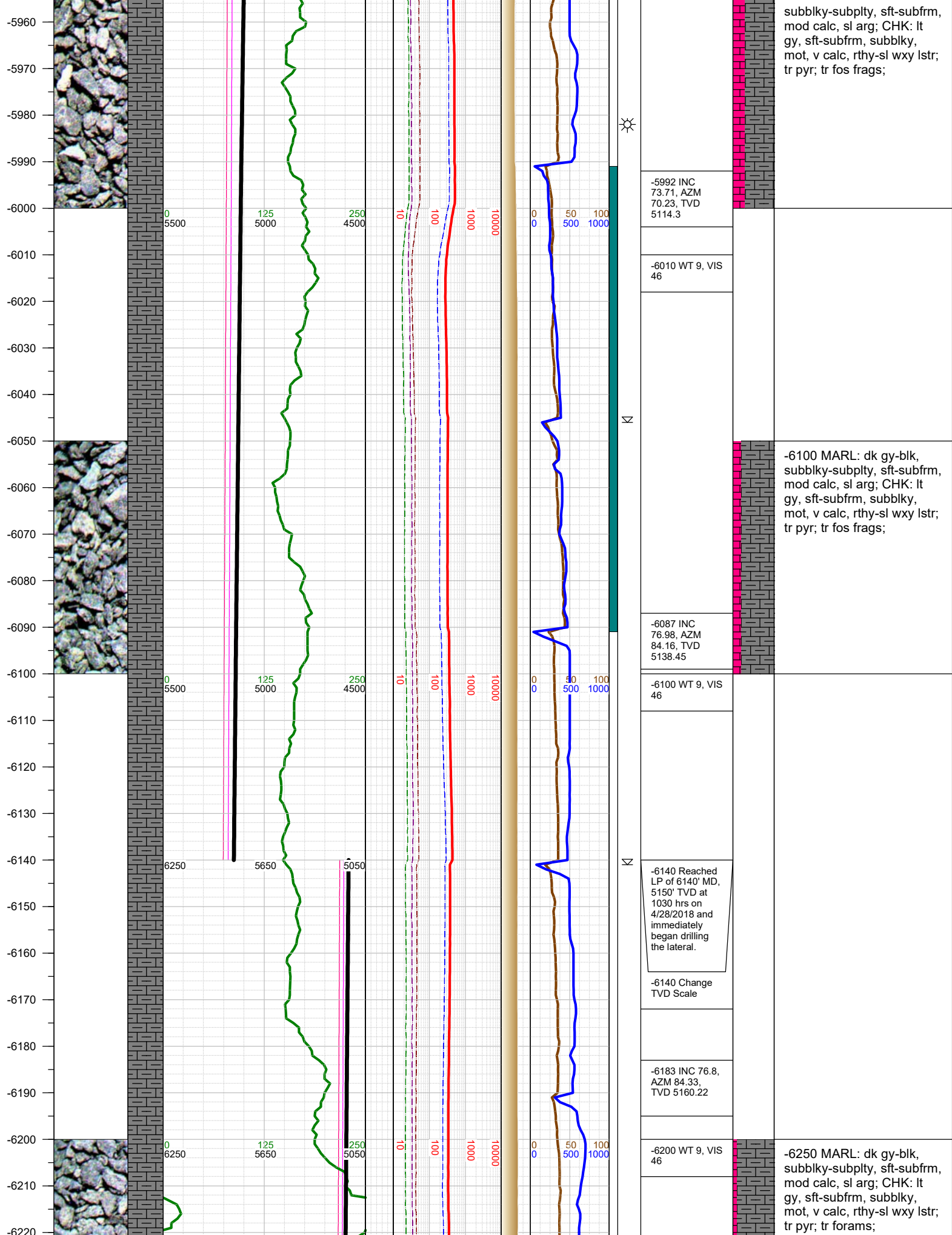




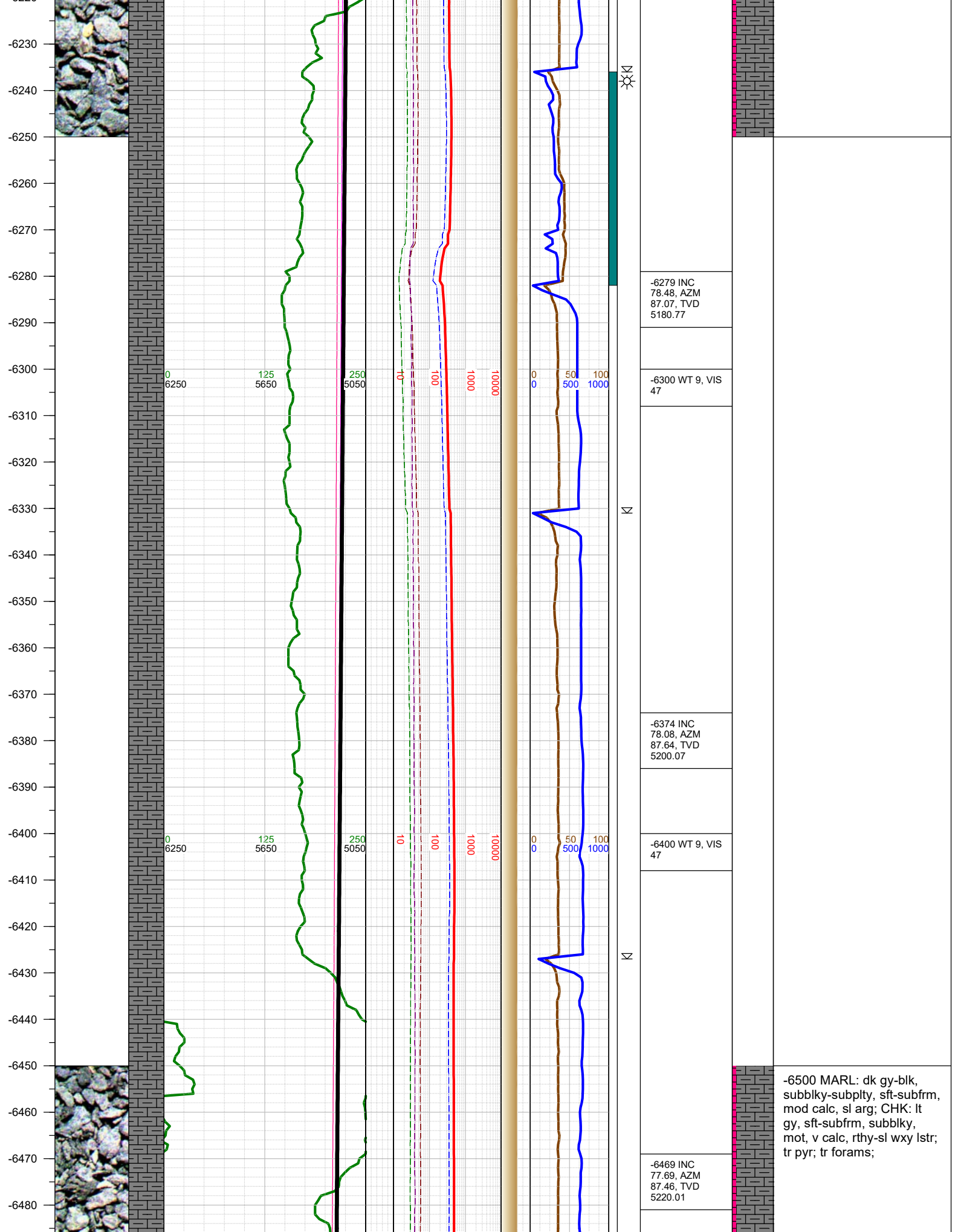




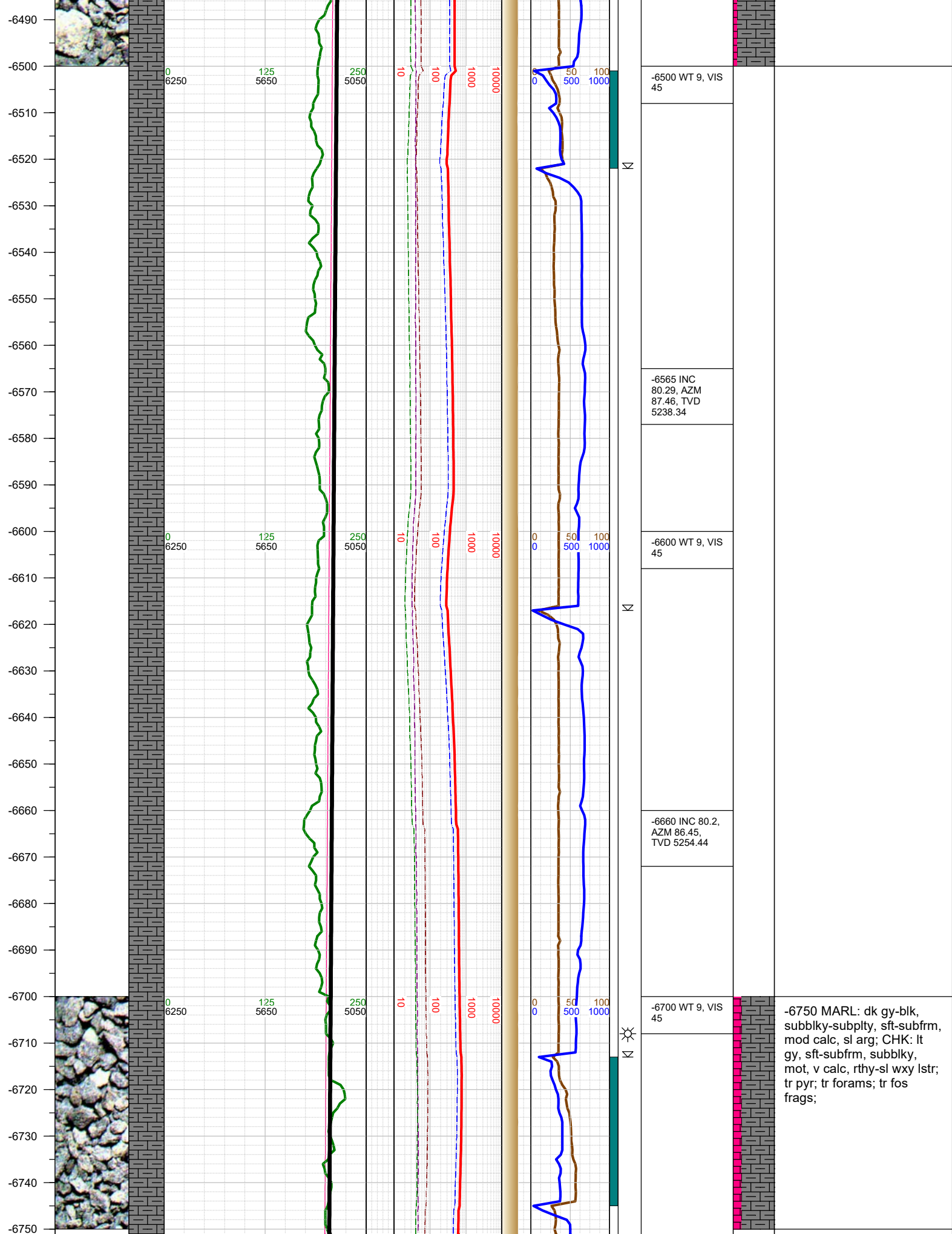


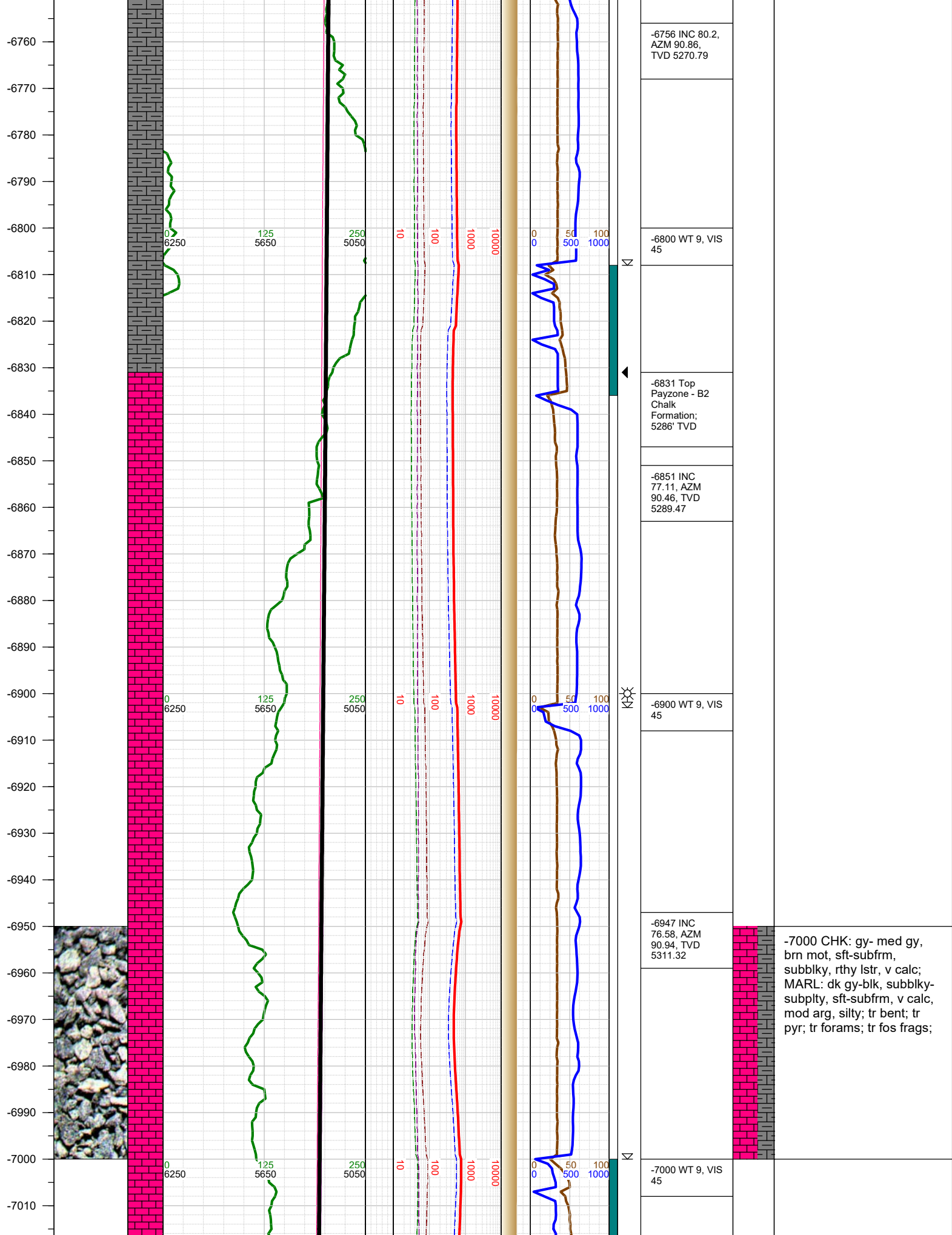




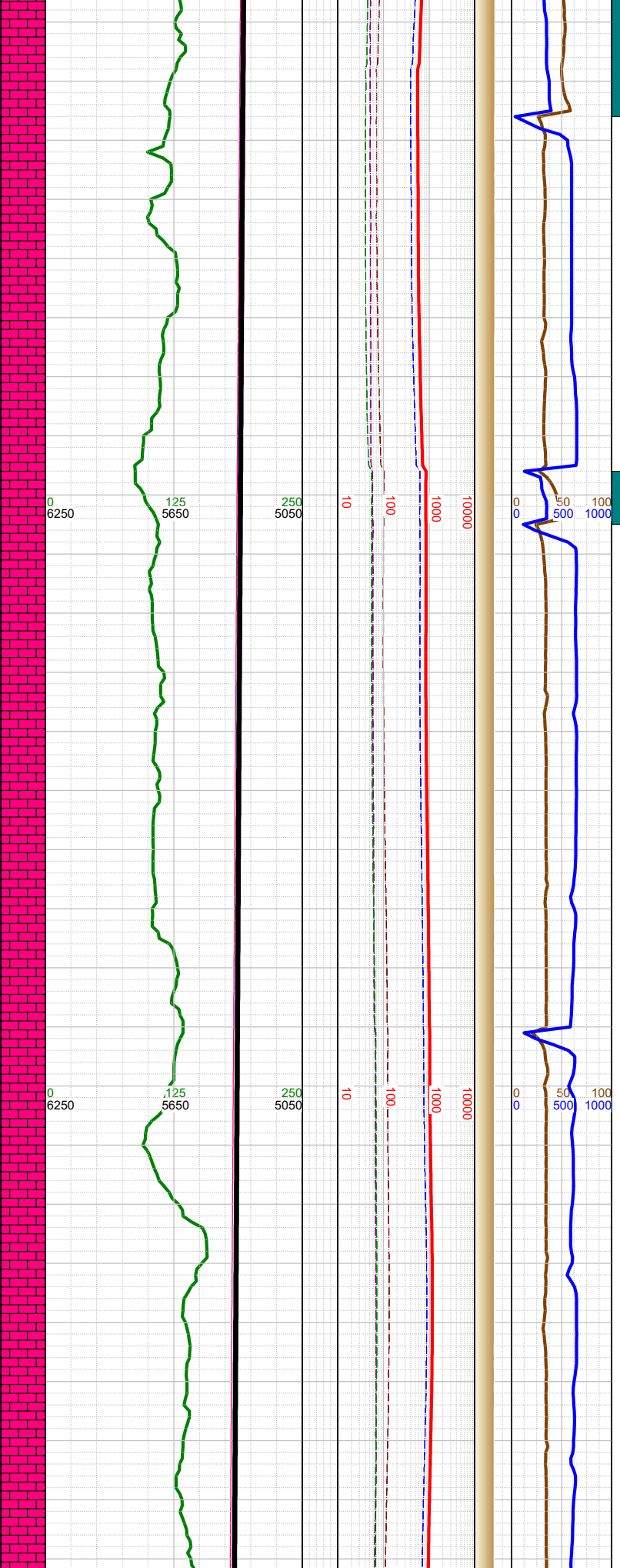








-7020  
-7030  
-7040  
-7050  
-7060  
-7070  
-7080  
-7090  
-7100  
-7110  
-7120  
-7130  
-7140  
-7150  
-7160  
-7170  
-7180  
-7190  
-7200  
-7210  
-7220  
-7230  
-7240  
-7250  
-7260  
-7270  
-7280



10

10

10

-7042 INC  
79.89, AZM  
88.43, TVD  
5330.69

-7100 WT 9, VIS  
45

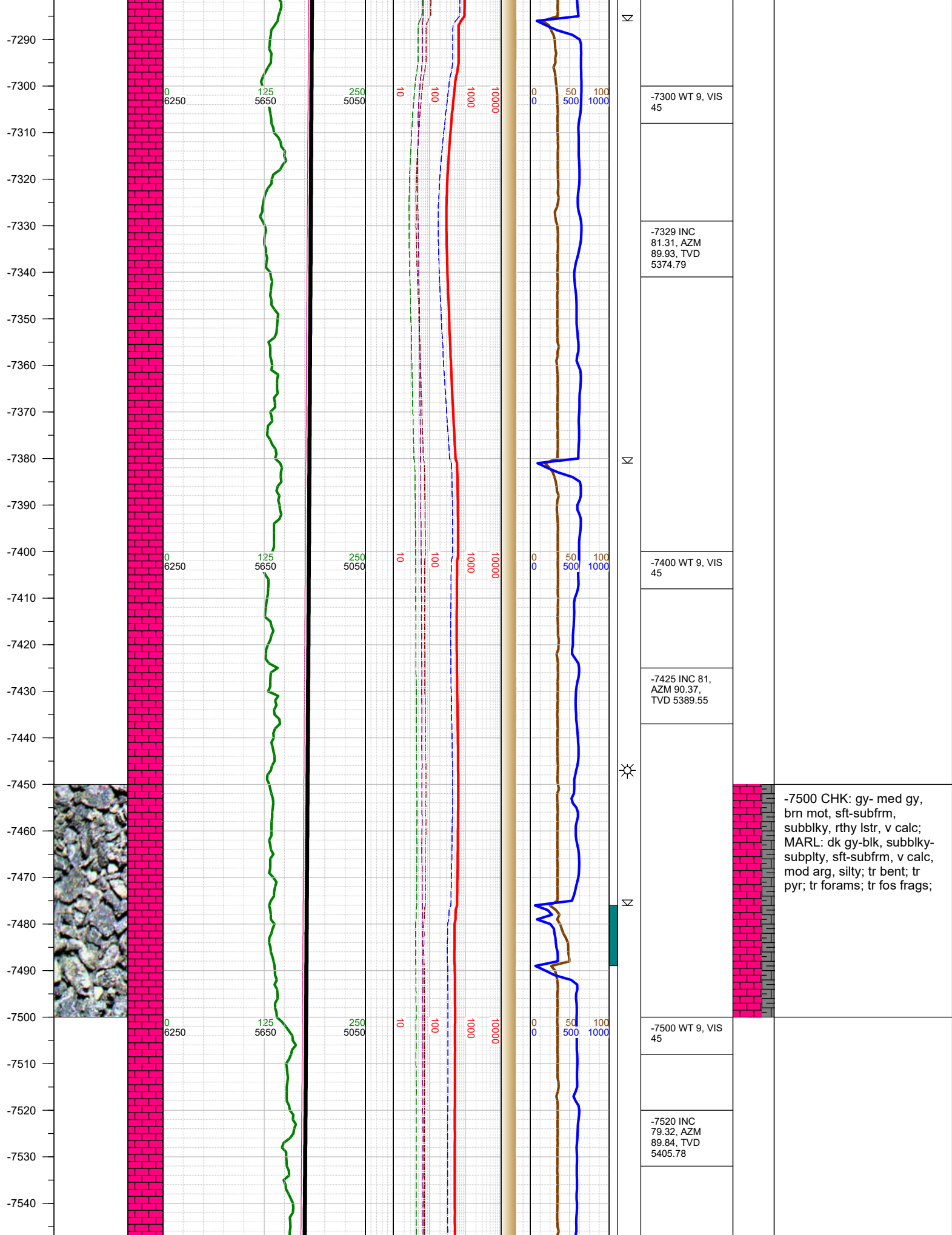
-7138 INC  
81.49, AZM  
90.15, TVD  
5346.22

-7200 WT 9, VIS  
45

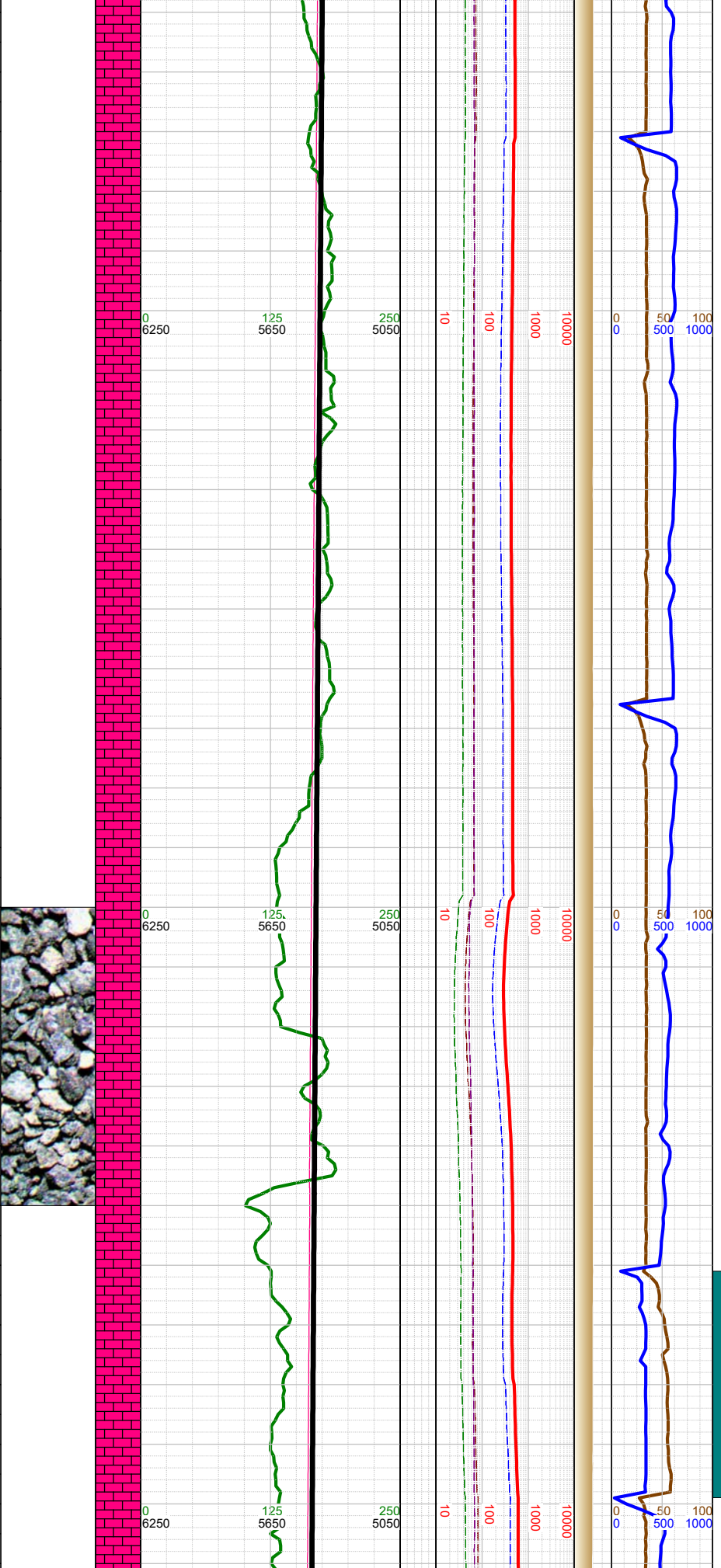
-7233 INC 81.4,  
AZM 89.75,  
TVD 5360.36

-7250 CHK: gy- med gy,  
brn mot, sft-subfrm,  
subblky, rthy lstr, v calc;  
MARL: dk gy-blk, subblky-  
subplty, sft-subfrm, v calc,  
mod arg, silty; tr bent; tr  
pyr; mod forams; mod fos  
frags;





-7550  
-7560  
-7570  
-7580  
-7590  
-7600  
-7610  
-7620  
-7630  
-7640  
-7650  
-7660  
-7670  
-7680  
-7690  
-7700  
-7710  
-7720  
-7730  
-7740  
-7750  
-7760  
-7770  
-7780  
-7790  
-7800  
-7810

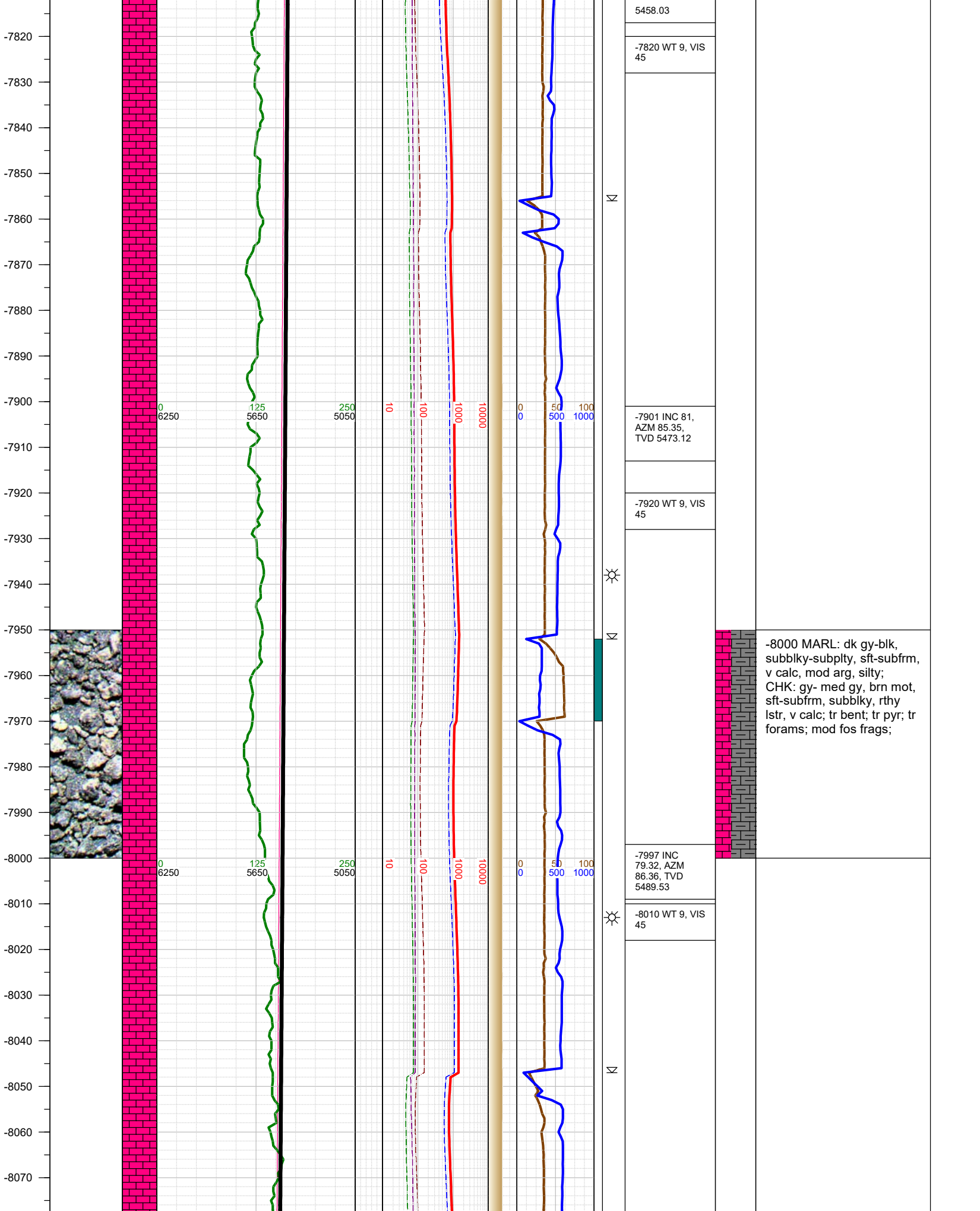


Σ  
Σ  
Σ

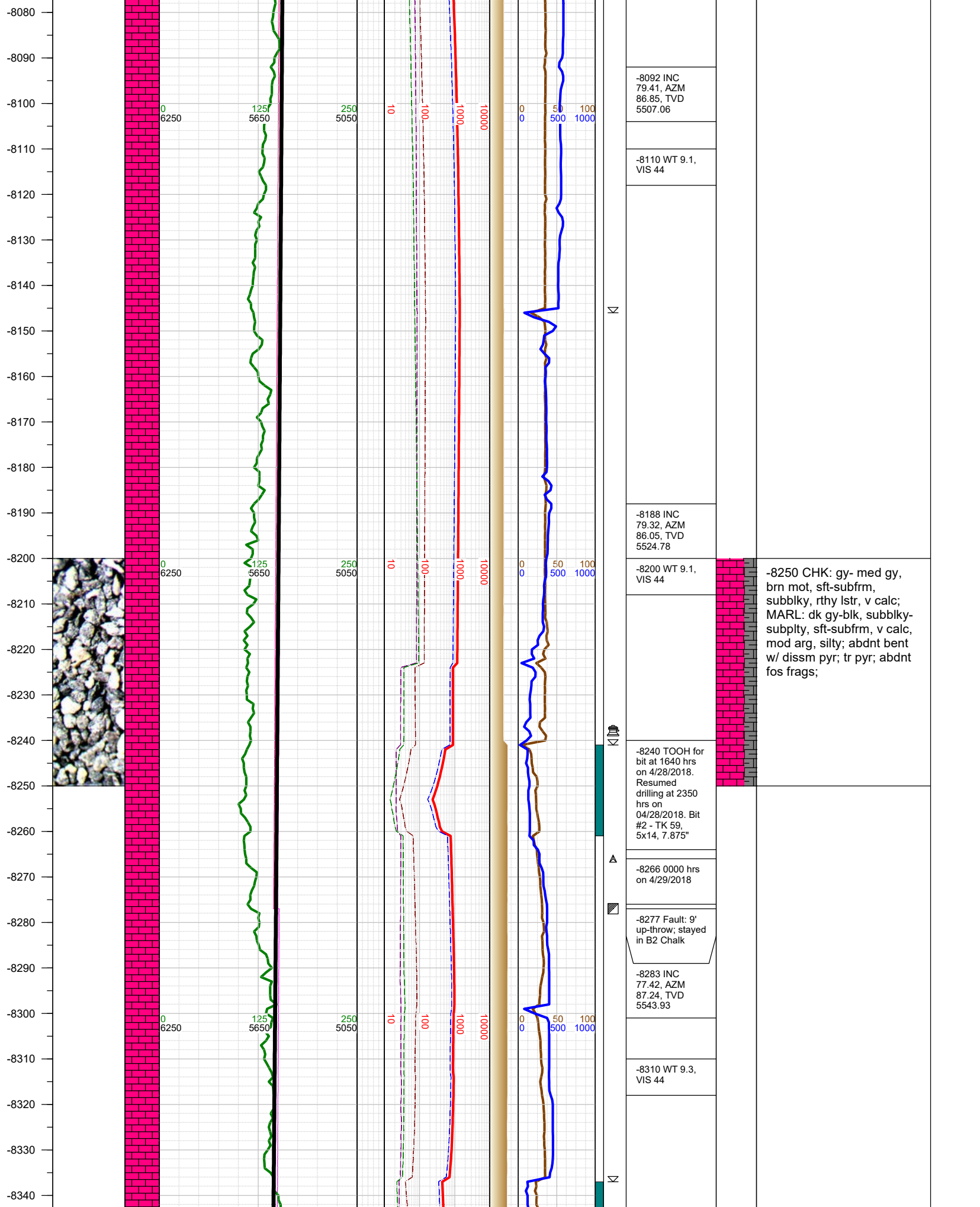
	-7600 WT 9, VIS 45
	-7616 INC 79.19, AZM 90.24, TVD 5423.68
	-7700 WT 9, VIS 45
	-7710 INC 79.01, AZM 91.74, TVD 5441.46
▨	-7747 Fault: 2' up-throw; stayed in B2 Chalk
	-7805 INC 80.91, AZM 86.36, TVD

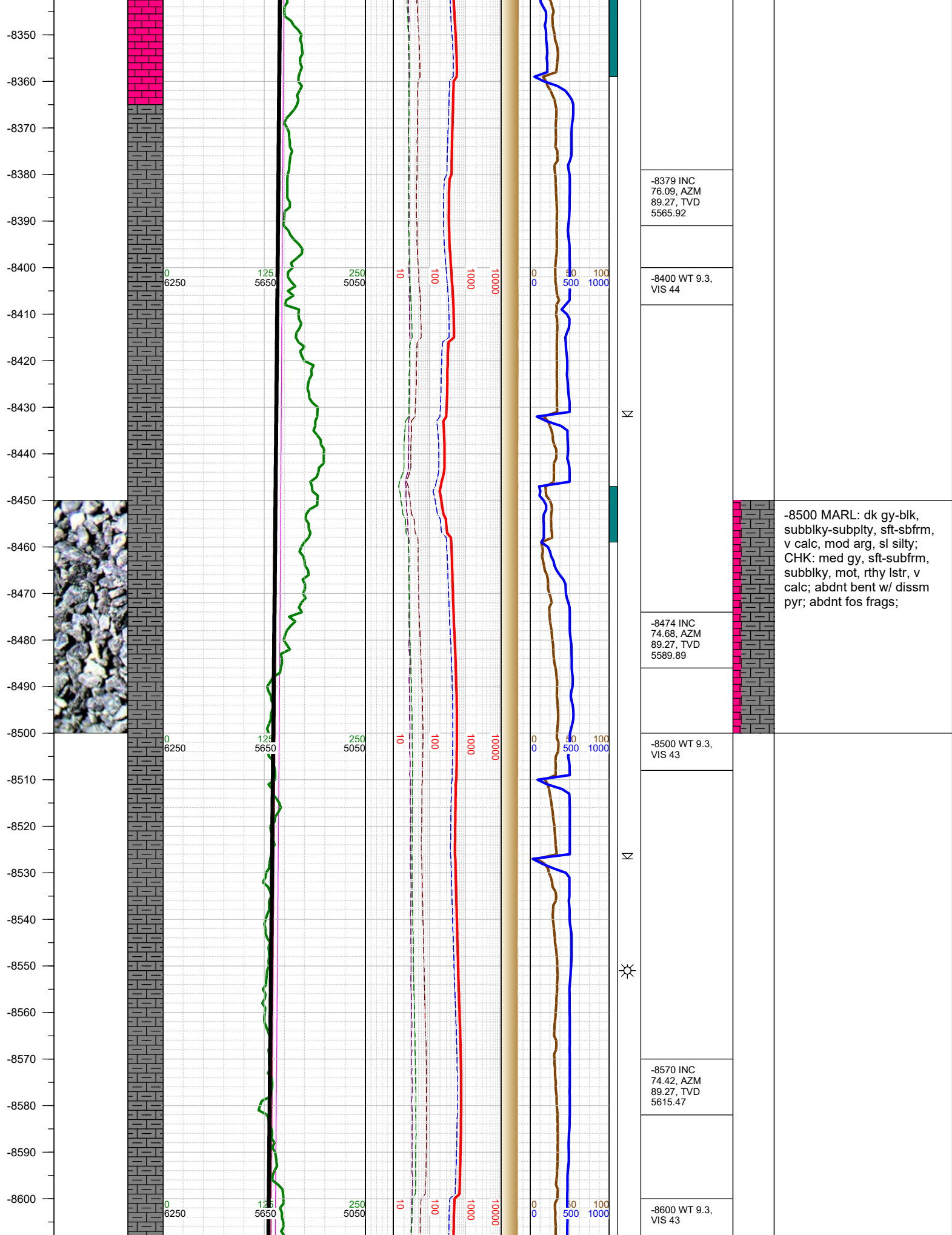


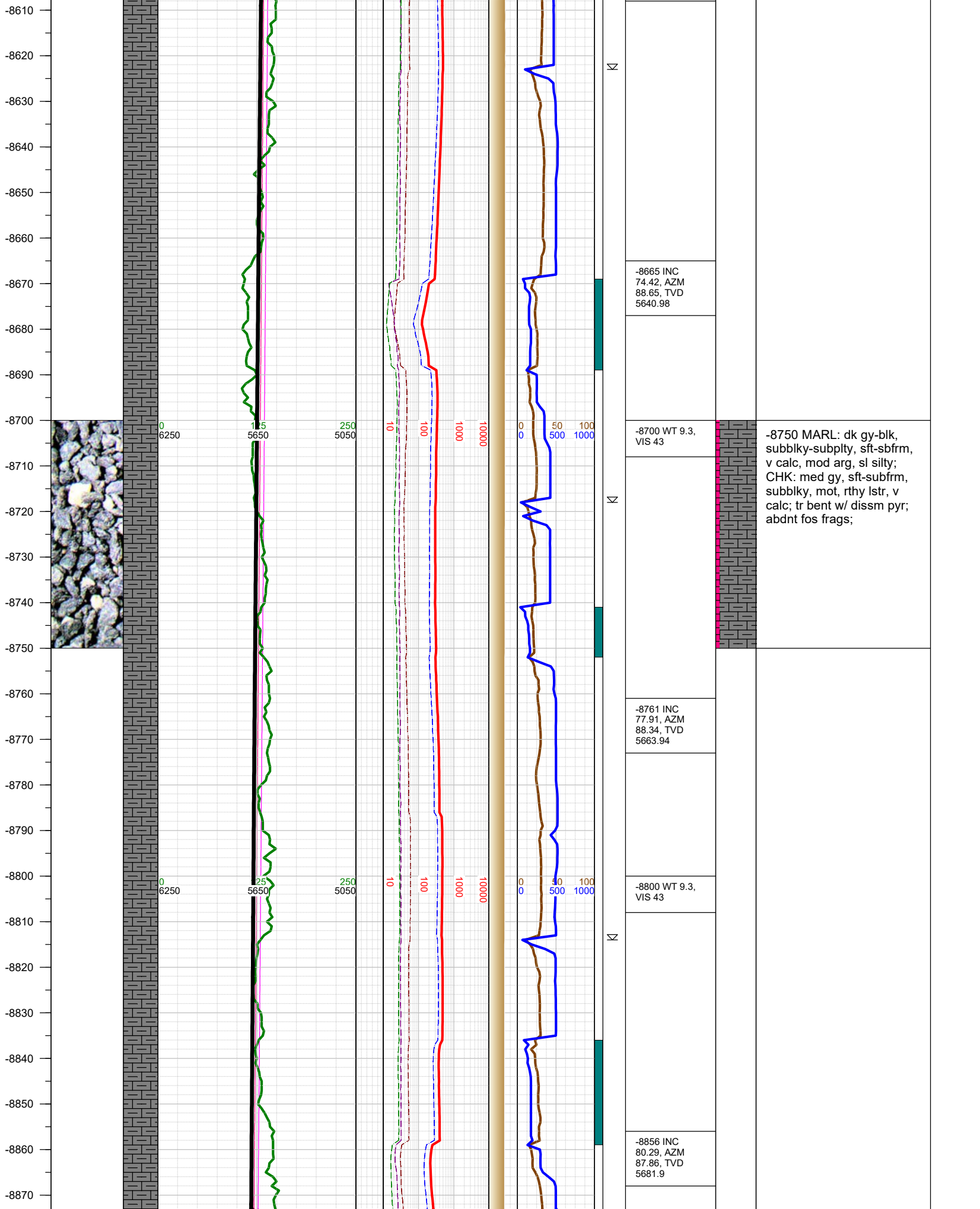
-7750 CHK: gy- med gy,  
brn mot, sft-subfrm,  
subblky, rthy lstr, v calc;  
MARL: dk gy-blk, subblky-  
subplty, sft-subfrm, v calc,  
mod arg, silty; tr bent; tr  
pyr; mod forams; mod fos  
frags;



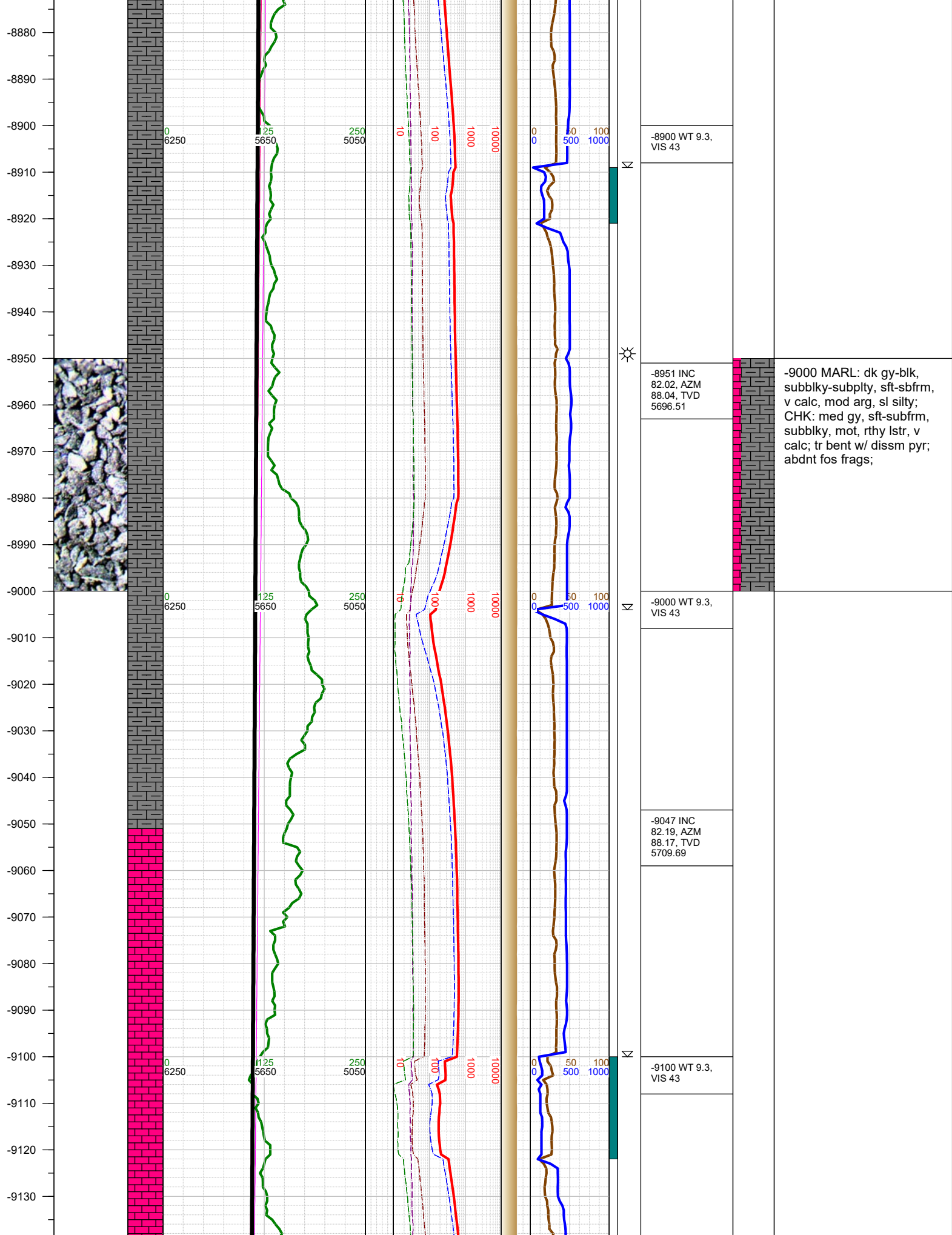


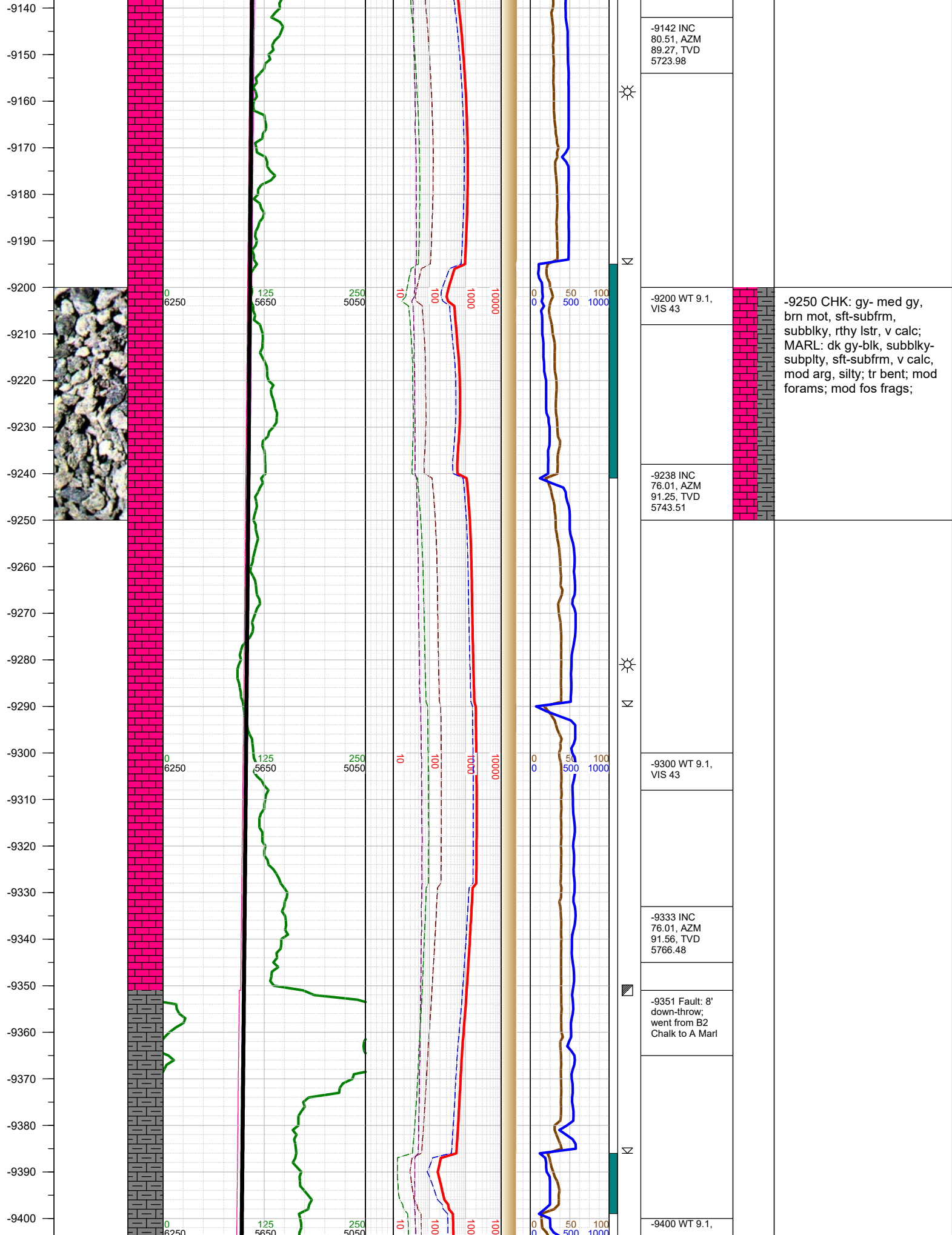


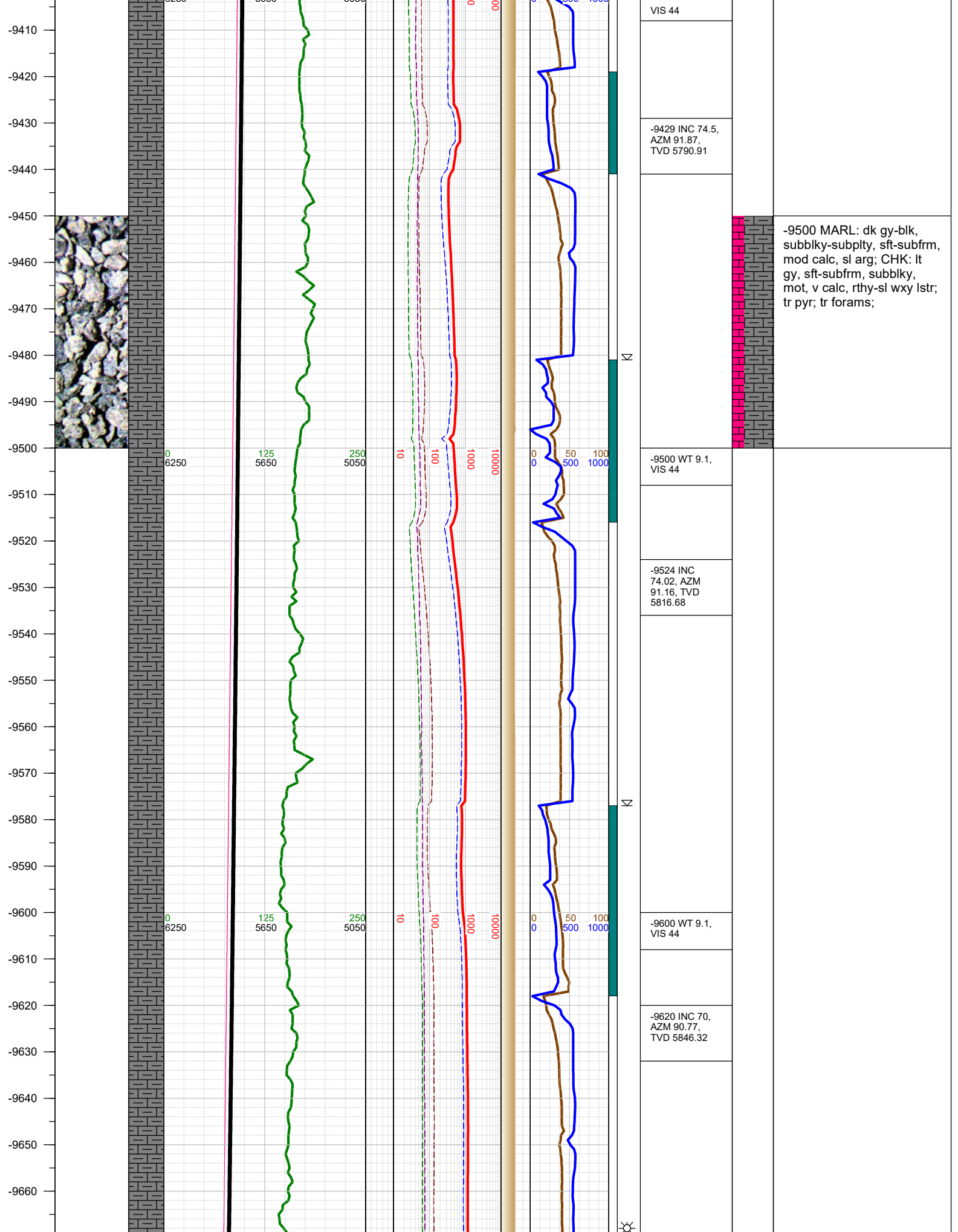




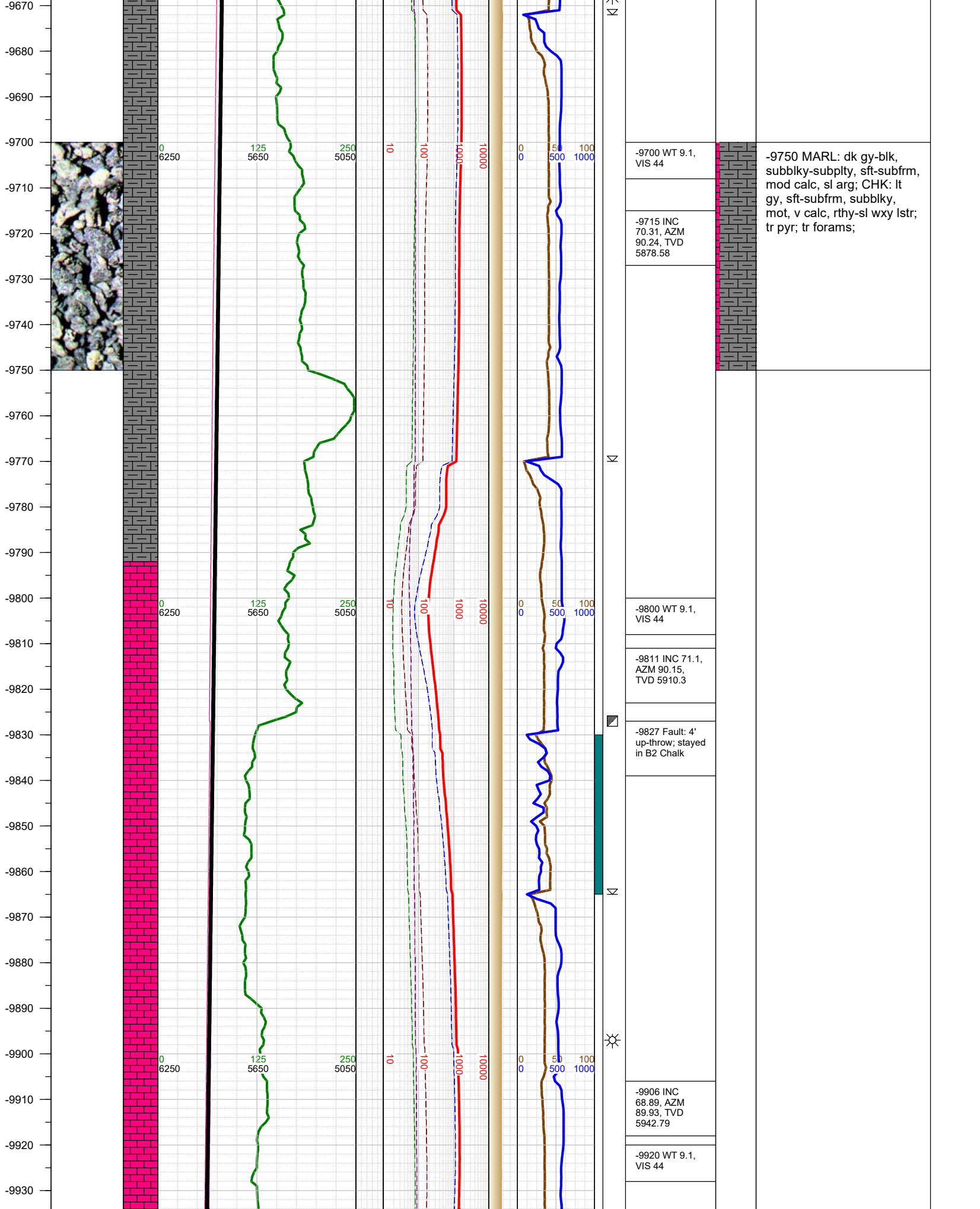


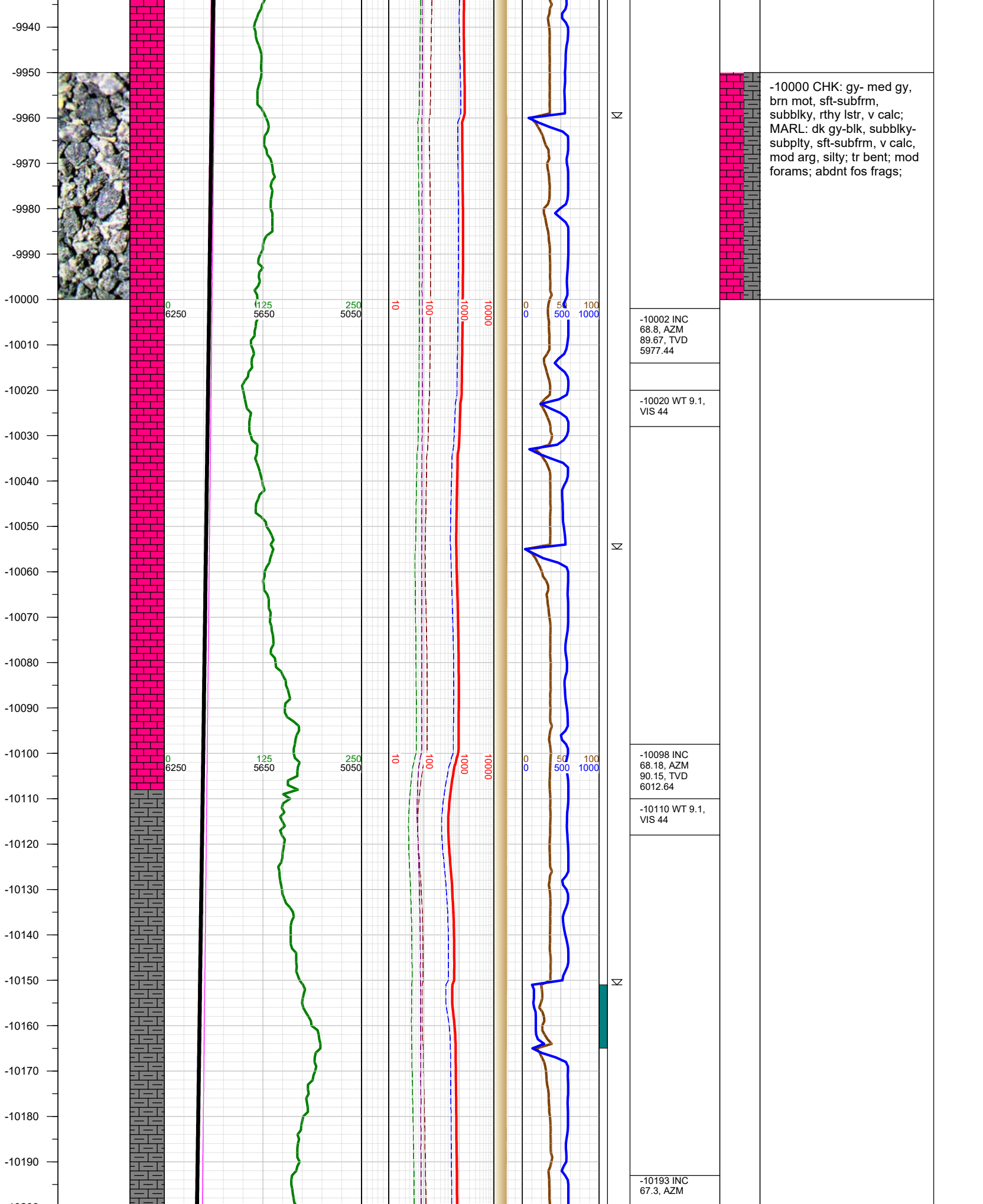


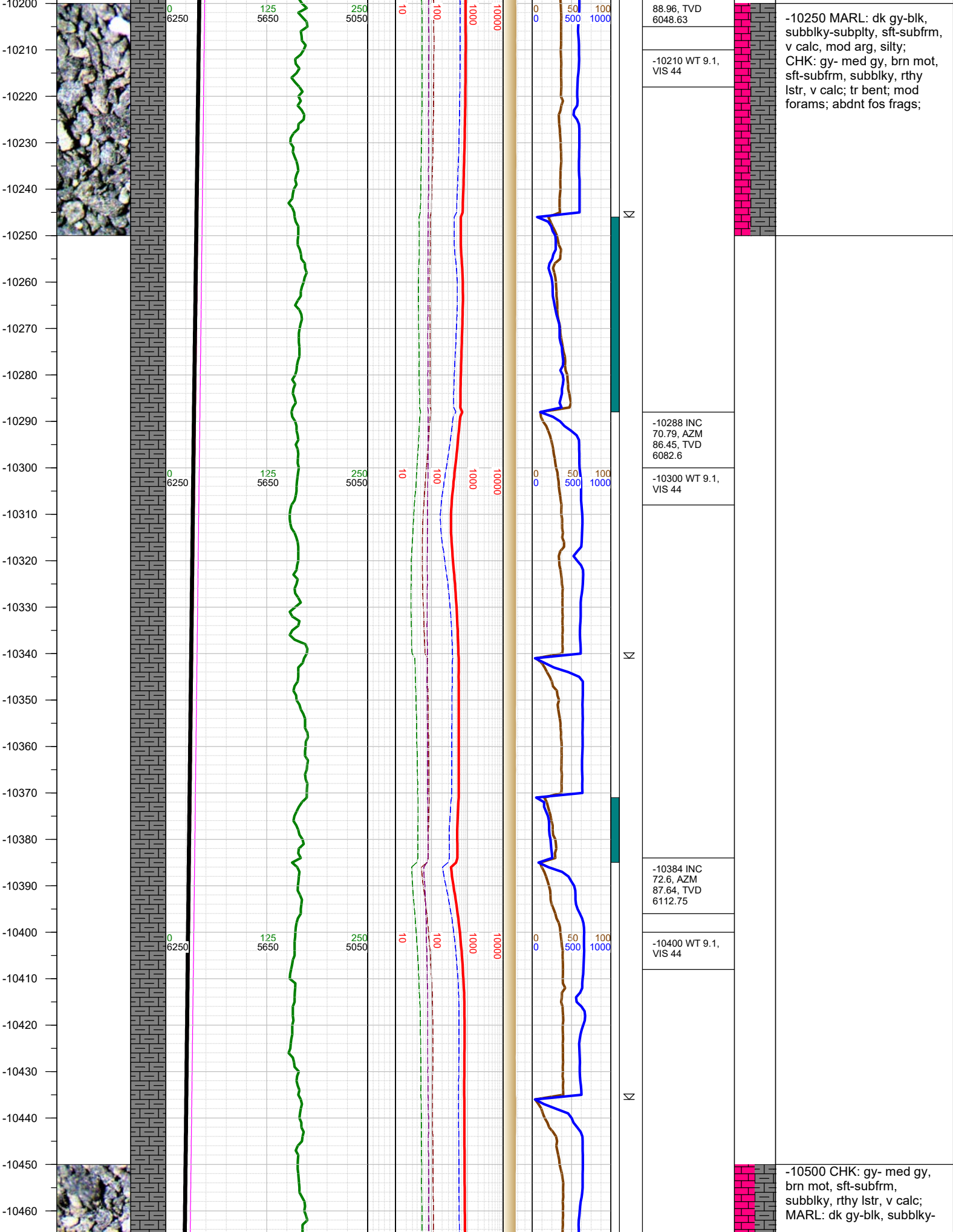




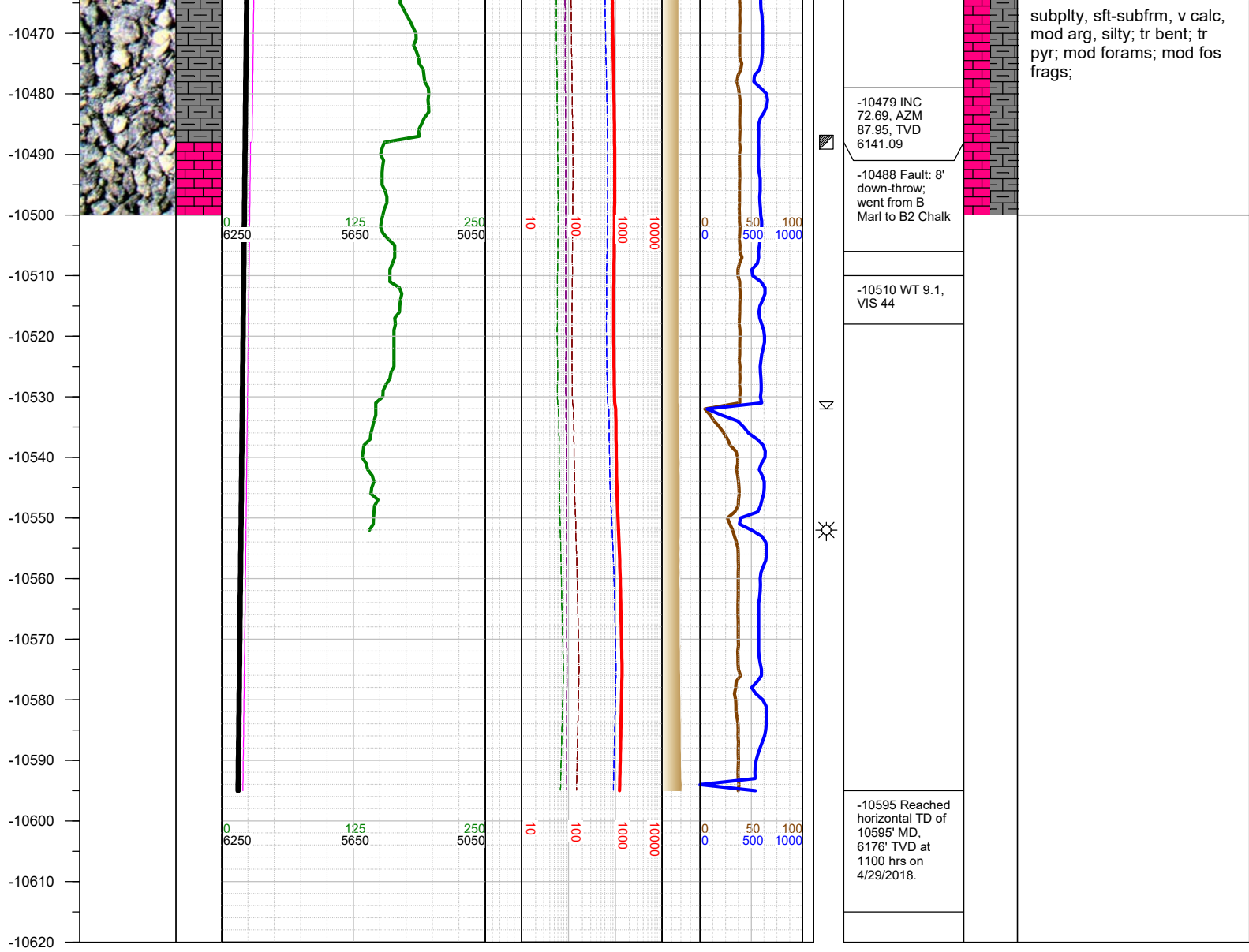












TOTAL DEPTH = 10595'

Thank you for using Earth Science Agency