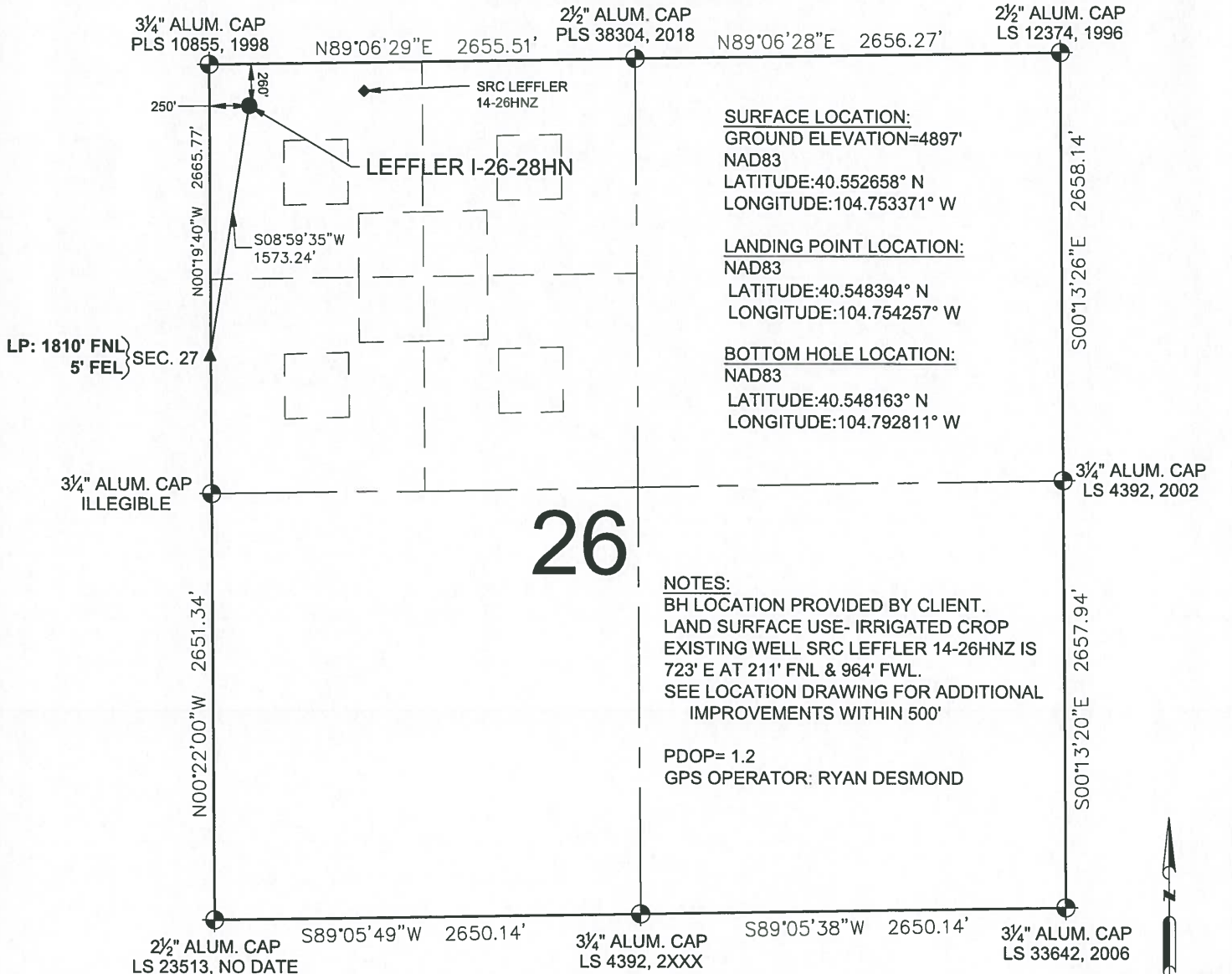


LEFFLER I-26-28HN WELL LOCATION EXHIBIT



LEGEND

- = EXISTING MONUMENT
- = CALCULATED POSITION
- = PROPOSED WELL
- ◆ = EXISTING WELL
- ◆ = BOTTOM HOLE
- ▲ = LANDING POINT
- LP = LANDING POINT
- BHL = BOTTOM HOLE LOCATION

NOTES:

- THIS FIELD SURVEY CONFORMS TO THE MINIMUM STANDARDS SET BY THE C.O.G.C.C., RULE NO. 215
- ALL DISTANCES AND BEARINGS SHOWN HEREON ARE GROUND VALUES AS GPS MEASURED IN THE FIELD, WITH TIES TO WELLS MEASURED PERPENDICULAR TO LINES SHOWN HEREON. THIS LOW DISTORTION PROJECTION (LDP) IS BASED ON THE NORTH AMERICAN DATUM OF 1983, U.S. SURVEY FOOT WITH A LATITUDE ORIGIN OF 40.567905°N, A CENTRAL MERIDIAN LONGITUDE OF 104.773474°W, AND A SCALE FACTOR ON THE CENTRAL MERIDIAN OF 1.000235 (EXACT). THE LDP BASIS OF BEARINGS IS GEODETIC NORTH.
- FIELD VERIFICATION OF MONUMENTS COMPLETED WITHIN 1 YEAR OF SIGNATURE DATE, UNLESS OTHERWISE NOTED.

NOTICE: ACCORDING TO COLORADO LAW YOU MUST COMMENCE ANY LEGAL ACTION BASED UPON ANY DEFECT IN THIS SURVEY WITHIN THREE YEARS AFTER YOU FIRST DISCOVER SUCH DEFECT. IN NO EVENT MAY ANY ACTION BASED UPON ANY DEFECT IN THIS SURVEY BE COMMENCED MORE THAN TEN YEARS FROM THIS SAID DATE OF THIS CERTIFICATION SHOWN HEREON.



FIELD DATE:
06-01-18

DRAWING DATE:
09-26-18

BY:
DNS

CHECKED:
MMP

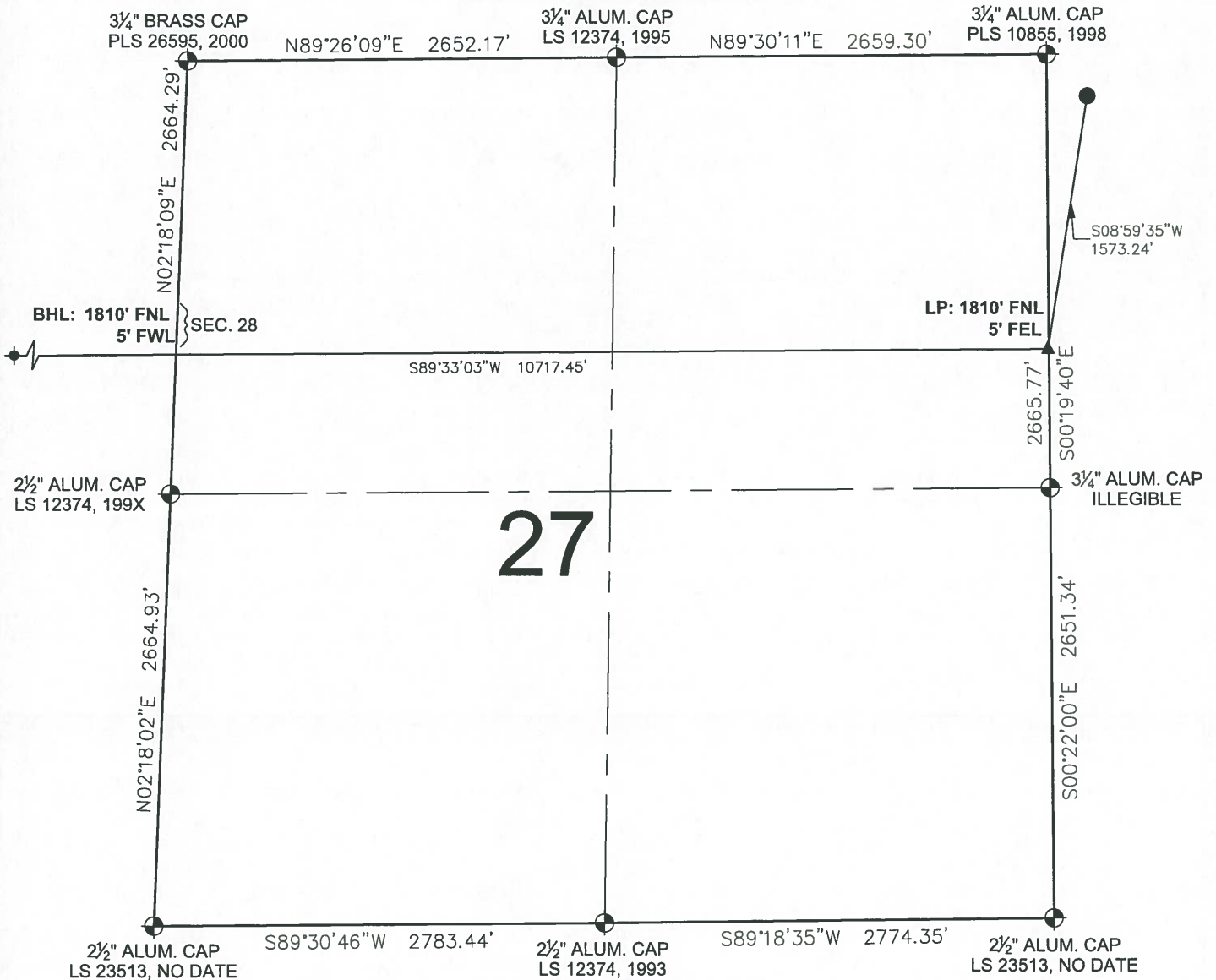
WELL NAME:
LEFFLER I-26-28HN

SURFACE LOCATION:
NW 1/4 NW 1/4 SEC. 26, T7N, R66W, 6TH P.M.
WELD COUNTY, COLORADO

PREPARED FOR:



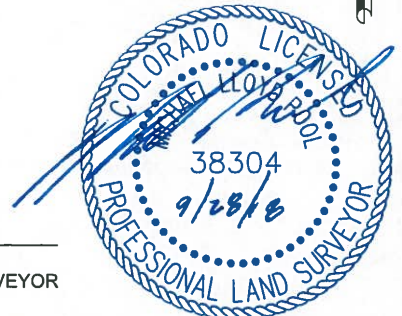
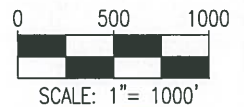
LEFFLER I-26-28HN WELL LOCATION EXHIBIT



LEGEND

- ⊕ = EXISTING MONUMENT
- = CALCULATED POSITION
- = PROPOSED WELL
- ◆ = EXISTING WELL
- ⬮ = BOTTOM HOLE
- ▲ = LANDING POINT
- LP = LANDING POINT
- BHL = BOTTOM HOLE LOCATION

MICHAEL L. POOL, PLS 38304
COLORADO LICENSED PROFESSIONAL LAND SURVEYOR
FOR AND ON BEHALF OF P.F.S., LLC
d.b.a. ASCENT GEOMATICS SOLUTIONS



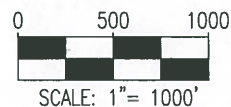
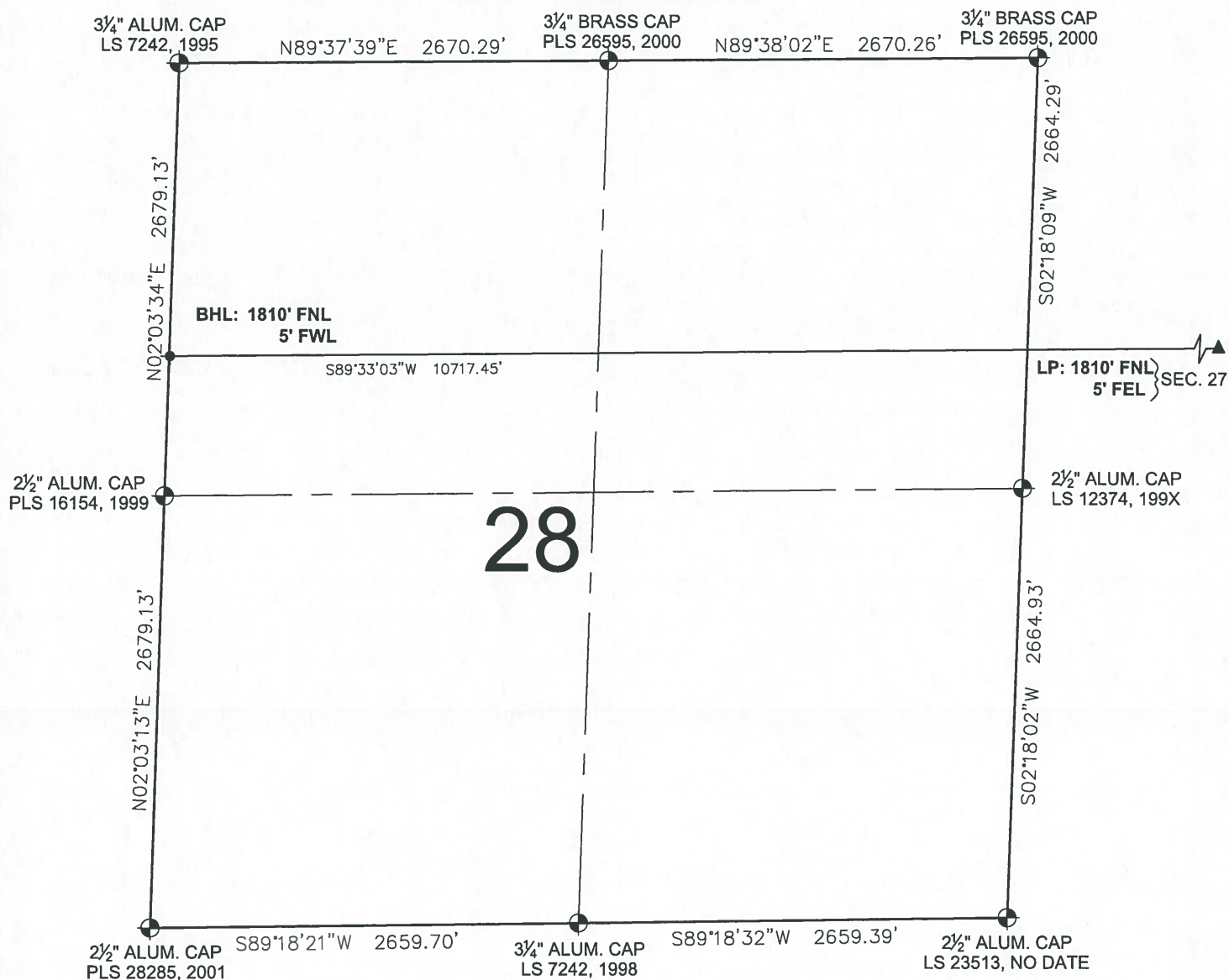
SHEET 2 OF 3



FIELD DATE: 06-01-18	WELL NAME: LEFFLER I-26-28HN
DRAWING DATE: 09-26-18	SURFACE LOCATION: NW 1/4 NW 1/4 SEC. 26, T7N, R66W, 6TH P.M. WELD COUNTY, COLORADO
BY: DNS	CHECKED: MMP



LEFFLER I-26-28HN WELL LOCATION EXHIBIT



LEGEND

- ⊕ = EXISTING MONUMENT
- = CALCULATED POSITION
- = PROPOSED WELL
- ◆ = EXISTING WELL
- ⬮ = BOTTOM HOLE
- ▲ = LANDING POINT
- LP = LANDING POINT
- BHL = BOTTOM HOLE LOCATION

MICHAEL L. POOL, PLS 38304
COLORADO LICENSED PROFESSIONAL LAND SURVEYOR
FOR AND ON BEHALF OF P.F.S., LLC
d.b.a. ASCENT GEOMATICS SOLUTIONS



SHEET 3 OF 3



7535 Hilltop Circle
Denver, CO 80221
(303) 928-7128
www.ascentgeomatics.com

FIELD DATE:
06-01-18

DRAWING DATE:
09-26-18

BY:
DNS

CHECKED:
MMP

WELL NAME:
LEFFLER I-26-28HN

SURFACE LOCATION:
NW 1/4 NW 1/4 SEC. 26, T7N, R66W, 6TH P.M.
WELD COUNTY, COLORADO

PREPARED FOR:

