

BAYSWATER E & P, LLC

Location	Weld County, CO	Slot	Leffler F-26-28HN
Field	WATTENBERG	Well	W Leffler F-26-28HN
Installation	Leffler Pad	Wellbore	W Leffler F-26-28HN (PWB)

N

TRUE

Scale 1 cm = 800 ft

East (Feet) ->

-12800 -11200 -9600 -8000 -6400 -4800 -3200 -1600 0 1600

Leffler F-26-28HN - BH

Surface 0.00 N 0.00 E

Leffler F-26-28HN - EP

W Leffler F-26-28HN (PWB)

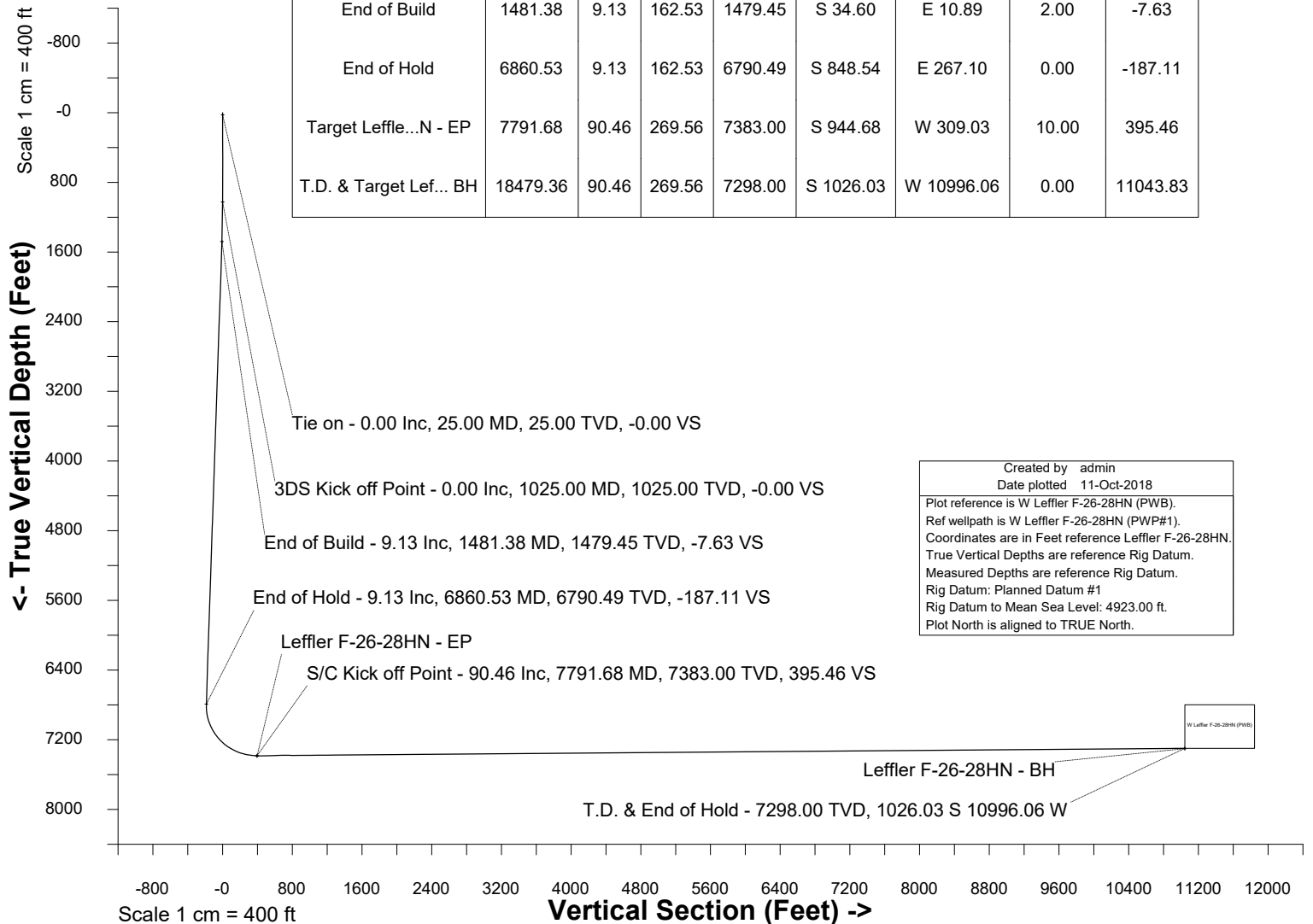
1600
0
-1600
-3200
Scale 1 cm = 800 ft
North (Feet)

WELL PROFILE DATA

Point	MD	Inc	Azi	TVD	North	East	deg/100ft	V. Sect
Tie on	25.00	0.00	0.00	25.00	S 0.00	W 0.00		-0.00
KOP	1025.00	0.00	162.53	1025.00	S 0.00	W 0.00	0.00	-0.00
End of Build	1481.38	9.13	162.53	1479.45	S 34.60	E 10.89	2.00	-7.63
End of Hold	6860.53	9.13	162.53	6790.49	S 848.54	E 267.10	0.00	-187.11
Target Leffle...N - EP	7791.68	90.46	269.56	7383.00	S 944.68	W 309.03	10.00	395.46
T.D. & Target Lef... BH	18479.36	90.46	269.56	7298.00	S 1026.03	W 10996.06	0.00	11043.83

Jul-30-2018

EMM-2015 [2000.0-2020.0] Dip: 66.99 deg Field: 52394.0 nT
Lat: N40 33 10.0548 Long: W104 45 12.7260 Elev: 0.00 ft
Magnetic North is 8.06 deg East of TRUE North
To correct azimuth from Magnetic to TRUE add 8.06 deg





SYSDRILL
Well Design Combined Report
Wellbore: W Leffler F-26-28HN (PWB)



Wellhead Details

Name	Latitude	Longitude	Northing	Easting	North	East	Slot Elevation Above Ground
Leffler F-26-28HN	40.55279800	-104.75315800	1445099.1712	3207531.9546	1.82N	104.77E	0.00

Declination

Date	Source	Time
Jul-30-2018	EMM-2015 [2000.0-2020.0]	11:39

Installation Details

Name	Installation Position (Latitude)	Installation Position (Longitude)	Northing	Easting	Coord System Name	North Alignment
Leffler Pad	40.55279300	-104.75353500	1445096.4676	3207427.2119	CO83-NF on NORTH AMERICAN DATUM 1983 datum	True

Summary Wellpath

MD[ft]	Inc[deg]	Azi[deg]	TVD[ft]	North[ft]	East[ft]	Dogleg [deg/100ft]	Vertical Section[ft]	Northing	Easting
25.00	0.00	0.000	25.00	0.00N	0.00E		0.00	1445099.17	3207531.95
1025.00	0.00	162.530	1025.00	0.00N	0.00E	==>	0.00	1445099.17	3207531.95
1481.38	9.13	162.530	1479.45	34.60S	10.89E	2.00	-7.63	1445064.66	3207543.14
6860.53	9.13	162.530	6790.49	848.54S	267.10E	==>	-187.11	1444252.94	3207806.18
7791.68	90.46	269.560	7383.00	944.68S	309.03W	10.00	395.46	1444151.95	3207230.90
18479.36	90.46	269.560	7298.00	1026.03S	10996.06W	==>	11043.83	1443980.61	3196545.27

Interpolated Wellpath

MD[ft]	Inc[deg]	Azi[deg]	TVD[ft]	North[ft]	East[ft]	Dogleg [deg/100ft]	Vertical Section[ft]	All Station Comments
0.00	0.00	0.000	0.00	0.00N	0.00E		0.00	Rig Datum
25.00	0.00	0.000	25.00	0.00N	0.00E	==>	0.00	Slot Datum
100.00	0.00	0.000	100.00	0.00N	0.00E	==>	0.00	
200.00	0.00	0.000	200.00	0.00N	0.00E	==>	0.00	
300.00	0.00	0.000	300.00	0.00N	0.00E	==>	0.00	
400.00	0.00	0.000	400.00	0.00N	0.00E	==>	0.00	
500.00	0.00	0.000	500.00	0.00N	0.00E	==>	0.00	
600.00	0.00	0.000	600.00	0.00N	0.00E	==>	0.00	
700.00	0.00	0.000	700.00	0.00N	0.00E	==>	0.00	
800.00	0.00	0.000	800.00	0.00N	0.00E	==>	0.00	
900.00	0.00	0.000	900.00	0.00N	0.00E	==>	0.00	
1000.00	0.00	0.000	1000.00	0.00N	0.00E	==>	0.00	
1100.00	1.50	162.530	1099.99	0.94S	0.29E	2.00	-0.21	
1200.00	3.50	162.530	1199.89	5.10S	1.60E	2.00	-1.12	
1300.00	5.50	162.530	1299.58	12.58S	3.96E	2.00	-2.77	
1400.00	7.50	162.530	1398.93	23.38S	7.36E	2.00	-5.16	
1500.00	9.13	162.530	1497.84	37.42S	11.78E	==>	-8.25	
1600.00	9.13	162.530	1596.57	52.55S	16.54E	==>	-11.59	
1700.00	9.13	162.530	1695.30	67.68S	21.30E	==>	-14.92	
1800.00	9.13	162.530	1794.04	82.81S	26.07E	==>	-18.26	
1900.00	9.13	162.530	1892.77	97.94S	30.83E	==>	-21.60	
2000.00	9.13	162.530	1991.51	113.08S	35.59E	==>	-24.93	
2100.00	9.13	162.530	2090.24	128.21S	40.36E	==>	-28.27	
2200.00	9.13	162.530	2188.97	143.34S	45.12E	==>	-31.61	
2300.00	9.13	162.530	2287.71	158.47S	49.88E	==>	-34.94	
2400.00	9.13	162.530	2386.44	173.60S	54.65E	==>	-38.28	
2500.00	9.13	162.530	2485.17	188.73S	59.41E	==>	-41.62	
2600.00	9.13	162.530	2583.91	203.86S	64.17E	==>	-44.95	
2700.00	9.13	162.530	2682.64	218.99S	68.93E	==>	-48.29	
2800.00	9.13	162.530	2781.38	234.13S	73.70E	==>	-51.63	
2900.00	9.13	162.530	2880.11	249.26S	78.46E	==>	-54.96	
3000.00	9.13	162.530	2978.84	264.39S	83.22E	==>	-58.30	
3100.00	9.13	162.530	3077.58	279.52S	87.99E	==>	-61.64	

All data is in Feet unless otherwise stated
Coordinates are from Slot MD's are from Rig and TVD's are from Rig (Planned Datum #1 4923.0ft above Mean Sea Level)
Vertical Section is from 0.00N 0.00E on azimuth 264.670 degrees
Bottom hole distance is 11043.83 Feet on azimuth 264.67 degrees from Wellhead
Calculation method uses Minimum Curvature method
Prepared by Microsoft
Date Printed: 11-Oct-2018



SYSDRILL
Well Design Combined Report
Wellbore: W Leffler F-26-28HN (PWB)



Interpolated Wellpath								
MD[ft]	Inc[deg]	Azi[deg]	TVD[ft]	North[ft]	East[ft]	Dogleg [deg/100ft]	Vertical Section[ft]	All Station Comments
3200.00	9.13	162.530	3176.31	294.65S	92.75E	==>	-64.97	
3300.00	9.13	162.530	3275.04	309.78S	97.51E	==>	-68.31	
3400.00	9.13	162.530	3373.78	324.91S	102.28E	==>	-71.65	
3500.00	9.13	162.530	3472.51	340.05S	107.04E	==>	-74.98	
3600.00	9.13	162.530	3571.25	355.18S	111.80E	==>	-78.32	
3700.00	9.13	162.530	3669.98	370.31S	116.56E	==>	-81.66	
3800.00	9.13	162.530	3768.71	385.44S	121.33E	==>	-84.99	
3900.00	9.13	162.530	3867.45	400.57S	126.09E	==>	-88.33	
4000.00	9.13	162.530	3966.18	415.70S	130.85E	==>	-91.67	
4100.00	9.13	162.530	4064.91	430.83S	135.62E	==>	-95.00	
4200.00	9.13	162.530	4163.65	445.96S	140.38E	==>	-98.34	
4300.00	9.13	162.530	4262.38	461.10S	145.14E	==>	-101.68	
4400.00	9.13	162.530	4361.12	476.23S	149.91E	==>	-105.01	
4500.00	9.13	162.530	4459.85	491.36S	154.67E	==>	-108.35	
4600.00	9.13	162.530	4558.58	506.49S	159.43E	==>	-111.69	
4700.00	9.13	162.530	4657.32	521.62S	164.19E	==>	-115.02	
4800.00	9.13	162.530	4756.05	536.75S	168.96E	==>	-118.36	
4900.00	9.13	162.530	4854.78	551.88S	173.72E	==>	-121.70	
5000.00	9.13	162.530	4953.52	567.02S	178.48E	==>	-125.03	
5100.00	9.13	162.530	5052.25	582.15S	183.25E	==>	-128.37	
5200.00	9.13	162.530	5150.99	597.28S	188.01E	==>	-131.71	
5300.00	9.13	162.530	5249.72	612.41S	192.77E	==>	-135.04	
5400.00	9.13	162.530	5348.45	627.54S	197.54E	==>	-138.38	
5500.00	9.13	162.530	5447.19	642.67S	202.30E	==>	-141.72	
5600.00	9.13	162.530	5545.92	657.80S	207.06E	==>	-145.05	
5700.00	9.13	162.530	5644.65	672.93S	211.82E	==>	-148.39	
5800.00	9.13	162.530	5743.39	688.07S	216.59E	==>	-151.73	
5900.00	9.13	162.530	5842.12	703.20S	221.35E	==>	-155.06	
6000.00	9.13	162.530	5940.86	718.33S	226.11E	==>	-158.40	
6100.00	9.13	162.530	6039.59	733.46S	230.88E	==>	-161.74	
6200.00	9.13	162.530	6138.32	748.59S	235.64E	==>	-165.07	
6300.00	9.13	162.530	6237.06	763.72S	240.40E	==>	-168.41	
6400.00	9.13	162.530	6335.79	778.85S	245.16E	==>	-171.75	
6500.00	9.13	162.530	6434.52	793.98S	249.93E	==>	-175.08	
6600.00	9.13	162.530	6533.26	809.12S	254.69E	==>	-178.42	
6700.00	9.13	162.530	6631.99	824.25S	259.45E	==>	-181.76	
6800.00	9.13	162.530	6730.73	839.38S	264.22E	==>	-185.09	
6900.00	8.83	187.950	6829.49	854.53S	267.62E	10.00	-187.07	
7000.00	14.24	232.240	6927.61	869.70S	256.81E	10.00	-174.90	
7100.00	22.94	248.200	7022.36	884.51S	228.92E	10.00	-145.75	
7200.00	32.37	255.460	7110.86	898.50S	184.80E	10.00	-100.52	
7300.00	42.04	259.680	7190.42	911.25S	125.79E	10.00	-40.59	
7400.00	51.82	262.550	7258.63	922.37S	53.69E	10.00	32.24	
7500.00	61.66	264.740	7313.41	931.52S	29.32W	10.00	115.73	
7600.00	71.52	266.550	7353.10	938.43S	120.70W	10.00	207.37	
7700.00	81.40	268.160	7376.49	942.88S	217.70W	10.00	304.35	
7800.00	90.46	269.560	7382.93	944.75S	317.35W	==>	403.75	
7900.00	90.46	269.560	7382.14	945.51S	417.34W	==>	503.38	
8000.00	90.46	269.560	7381.34	946.27S	517.34W	==>	603.01	
8100.00	90.46	269.560	7380.55	947.03S	617.33W	==>	702.65	
8200.00	90.46	269.560	7379.75	947.79S	717.33W	==>	802.28	
8300.00	90.46	269.560	7378.96	948.55S	817.32W	==>	901.91	
8400.00	90.46	269.560	7378.16	949.31S	917.31W	==>	1001.54	
8500.00	90.46	269.560	7377.37	950.08S	1017.31W	==>	1101.17	
8600.00	90.46	269.560	7376.57	950.84S	1117.30W	==>	1200.81	
8700.00	90.46	269.560	7375.78	951.60S	1217.30W	==>	1300.44	
8800.00	90.46	269.560	7374.98	952.36S	1317.29W	==>	1400.07	
8900.00	90.46	269.560	7374.19	953.12S	1417.28W	==>	1499.70	
9000.00	90.46	269.560	7373.39	953.88S	1517.28W	==>	1599.34	

All data is in Feet unless otherwise stated
Coordinates are from Slot MD's are from Rig (Planned Datum #1 4923.0ft above Mean Sea Level)
Vertical Section is from 0.00N 0.00E on azimuth 264.670 degrees
Bottom hole distance is 11043.83 Feet on azimuth 264.67 degrees from Wellhead
Calculation method uses Minimum Curvature method
Prepared by Microsoft
Date Printed: 11-Oct-2018



SYS DRILL
Well Design Combined Report
Wellbore: W Leffler F-26-28HN (PWB)



Interpolated Wellpath								
MD[ft]	Inc[deg]	Azi[deg]	TVD[ft]	North[ft]	East[ft]	Dogleg [deg/100ft]	Vertical Section[ft]	All Station Comments
9100.00	90.46	269.560	7372.59	954.64S	1617.27W	==>	1698.97	
9200.00	90.46	269.560	7371.80	955.40S	1717.27W	==>	1798.60	
9300.00	90.46	269.560	7371.00	956.16S	1817.26W	==>	1898.23	
9400.00	90.46	269.560	7370.21	956.92S	1917.25W	==>	1997.86	
9500.00	90.46	269.560	7369.41	957.69S	2017.25W	==>	2097.50	
9600.00	90.46	269.560	7368.62	958.45S	2117.24W	==>	2197.13	
9700.00	90.46	269.560	7367.82	959.21S	2217.23W	==>	2296.76	
9800.00	90.46	269.560	7367.03	959.97S	2317.23W	==>	2396.39	
9900.00	90.46	269.560	7366.23	960.73S	2417.22W	==>	2496.02	
10000.00	90.46	269.560	7365.44	961.49S	2517.22W	==>	2595.66	
10100.00	90.46	269.560	7364.64	962.25S	2617.21W	==>	2695.29	
10200.00	90.46	269.560	7363.85	963.01S	2717.20W	==>	2794.92	
10300.00	90.46	269.560	7363.05	963.77S	2817.20W	==>	2894.55	
10400.00	90.46	269.560	7362.26	964.54S	2917.19W	==>	2994.19	
10500.00	90.46	269.560	7361.46	965.30S	3017.19W	==>	3093.82	
10600.00	90.46	269.560	7360.67	966.06S	3117.18W	==>	3193.45	
10700.00	90.46	269.560	7359.87	966.82S	3217.17W	==>	3293.08	
10800.00	90.46	269.560	7359.07	967.58S	3317.17W	==>	3392.71	
10900.00	90.46	269.560	7358.28	968.34S	3417.16W	==>	3492.35	
11000.00	90.46	269.560	7357.48	969.10S	3517.16W	==>	3591.98	
11100.00	90.46	269.560	7356.69	969.86S	3617.15W	==>	3691.61	
11200.00	90.46	269.560	7355.89	970.62S	3717.14W	==>	3791.24	
11300.00	90.46	269.560	7355.10	971.39S	3817.14W	==>	3890.88	
11400.00	90.46	269.560	7354.30	972.15S	3917.13W	==>	3990.51	
11500.00	90.46	269.560	7353.51	972.91S	4017.13W	==>	4090.14	
11600.00	90.46	269.560	7352.71	973.67S	4117.12W	==>	4189.77	
11700.00	90.46	269.560	7351.92	974.43S	4217.11W	==>	4289.40	
11800.00	90.46	269.560	7351.12	975.19S	4317.11W	==>	4389.04	
11900.00	90.46	269.560	7350.33	975.95S	4417.10W	==>	4488.67	
12000.00	90.46	269.560	7349.53	976.71S	4517.10W	==>	4588.30	
12100.00	90.46	269.560	7348.74	977.47S	4617.09W	==>	4687.93	
12200.00	90.46	269.560	7347.94	978.24S	4717.08W	==>	4787.56	
12300.00	90.46	269.560	7347.14	979.00S	4817.08W	==>	4887.20	
12400.00	90.46	269.560	7346.35	979.76S	4917.07W	==>	4986.83	
12500.00	90.46	269.560	7345.55	980.52S	5017.07W	==>	5086.46	
12600.00	90.46	269.560	7344.76	981.28S	5117.06W	==>	5186.09	
12700.00	90.46	269.560	7343.96	982.04S	5217.05W	==>	5285.73	
12800.00	90.46	269.560	7343.17	982.80S	5317.05W	==>	5385.36	
12900.00	90.46	269.560	7342.37	983.56S	5417.04W	==>	5484.99	
13000.00	90.46	269.560	7341.58	984.32S	5517.04W	==>	5584.62	
13100.00	90.46	269.560	7340.78	985.09S	5617.03W	==>	5684.25	
13200.00	90.46	269.560	7339.99	985.85S	5717.02W	==>	5783.89	
13300.00	90.46	269.560	7339.19	986.61S	5817.02W	==>	5883.52	
13400.00	90.46	269.560	7338.40	987.37S	5917.01W	==>	5983.15	
13500.00	90.46	269.560	7337.60	988.13S	6017.00W	==>	6082.78	
13600.00	90.46	269.560	7336.81	988.89S	6117.00W	==>	6182.42	
13700.00	90.46	269.560	7336.01	989.65S	6216.99W	==>	6282.05	
13800.00	90.46	269.560	7335.22	990.41S	6316.99W	==>	6381.68	
13900.00	90.46	269.560	7334.42	991.17S	6416.98W	==>	6481.31	
14000.00	90.46	269.560	7333.62	991.93S	6516.97W	==>	6580.94	
14100.00	90.46	269.560	7332.83	992.70S	6616.97W	==>	6680.58	
14200.00	90.46	269.560	7332.03	993.46S	6716.96W	==>	6780.21	
14300.00	90.46	269.560	7331.24	994.22S	6816.96W	==>	6879.84	
14400.00	90.46	269.560	7330.44	994.98S	6916.95W	==>	6979.47	
14500.00	90.46	269.560	7329.65	995.74S	7016.94W	==>	7079.10	
14600.00	90.46	269.560	7328.85	996.50S	7116.94W	==>	7178.74	
14700.00	90.46	269.560	7328.06	997.26S	7216.93W	==>	7278.37	
14800.00	90.46	269.560	7327.26	998.02S	7316.93W	==>	7378.00	
14900.00	90.46	269.560	7326.47	998.78S	7416.92W	==>	7477.63	

All data is in Feet unless otherwise stated
Coordinates are from Slot MD's are from Rig and TVD's are from Rig (Planned Datum #1 4923.0ft above Mean Sea Level)
Vertical Section is from 0.00N 0.00E on azimuth 264.670 degrees
Bottom hole distance is 11043.83 Feet on azimuth 264.67 degrees from Wellhead
Calculation method uses Minimum Curvature method
Prepared by Microsoft
Date Printed: 11-Oct-2018



SYS DRILL
Well Design Combined Report
Wellbore: W Leffler F-26-28HN (PWB)



Interpolated Wellpath								
MD[ft]	Inc[deg]	Azi[deg]	TVD[ft]	North[ft]	East[ft]	Dogleg [deg/100ft]	Vertical Section[ft]	All Station Comments
15000.00	90.46	269.560	7325.67	999.55S	7516.91W	==>	7577.27	
15100.00	90.46	269.560	7324.88	1000.31S	7616.91W	==>	7676.90	
15200.00	90.46	269.560	7324.08	1001.07S	7716.90W	==>	7776.53	
15300.00	90.46	269.560	7323.29	1001.83S	7816.90W	==>	7876.16	
15400.00	90.46	269.560	7322.49	1002.59S	7916.89W	==>	7975.79	
15500.00	90.46	269.560	7321.70	1003.35S	8016.88W	==>	8075.43	
15600.00	90.46	269.560	7320.90	1004.11S	8116.88W	==>	8175.06	
15700.00	90.46	269.560	7320.10	1004.87S	8216.87W	==>	8274.69	
15800.00	90.46	269.560	7319.31	1005.63S	8316.87W	==>	8374.32	
15900.00	90.46	269.560	7318.51	1006.40S	8416.86W	==>	8473.96	
16000.00	90.46	269.560	7317.72	1007.16S	8516.85W	==>	8573.59	
16100.00	90.46	269.560	7316.92	1007.92S	8616.85W	==>	8673.22	
16200.00	90.46	269.560	7316.13	1008.68S	8716.84W	==>	8772.85	
16300.00	90.46	269.560	7315.33	1009.44S	8816.84W	==>	8872.48	
16400.00	90.46	269.560	7314.54	1010.20S	8916.83W	==>	8972.12	
16500.00	90.46	269.560	7313.74	1010.96S	9016.82W	==>	9071.75	
16600.00	90.46	269.560	7312.95	1011.72S	9116.82W	==>	9171.38	
16700.00	90.46	269.560	7312.15	1012.48S	9216.81W	==>	9271.01	
16800.00	90.46	269.560	7311.36	1013.25S	9316.80W	==>	9370.64	
16900.00	90.46	269.560	7310.56	1014.01S	9416.80W	==>	9470.28	
17000.00	90.46	269.560	7309.77	1014.77S	9516.79W	==>	9569.91	
17100.00	90.46	269.560	7308.97	1015.53S	9616.79W	==>	9669.54	
17200.00	90.46	269.560	7308.17	1016.29S	9716.78W	==>	9769.17	
17300.00	90.46	269.560	7307.38	1017.05S	9816.77W	==>	9868.81	
17400.00	90.46	269.560	7306.58	1017.81S	9916.77W	==>	9968.44	
17500.00	90.46	269.560	7305.79	1018.57S	10016.76W	==>	10068.07	
17600.00	90.46	269.560	7304.99	1019.33S	10116.76W	==>	10167.70	
17700.00	90.46	269.560	7304.20	1020.10S	10216.75W	==>	10267.33	
17800.00	90.46	269.560	7303.40	1020.86S	10316.74W	==>	10366.97	
17900.00	90.46	269.560	7302.61	1021.62S	10416.74W	==>	10466.60	
18000.00	90.46	269.560	7301.81	1022.38S	10516.73W	==>	10566.23	
18100.00	90.46	269.560	7301.02	1023.14S	10616.73W	==>	10665.86	
18200.00	90.46	269.560	7300.22	1023.90S	10716.72W	==>	10765.50	
18300.00	90.46	269.560	7299.43	1024.66S	10816.71W	==>	10865.13	
18400.00	90.46	269.560	7298.63	1025.42S	10916.71W	==>	10964.76	
18479.36	90.46	269.560	7298.00	1026.03S	10996.06W	==>	11043.83	

All data is in Feet unless otherwise stated
Coordinates are from Slot MD's are from Rig and TVD's are from Rig (Planned Datum #1 4923.0ft above Mean Sea Level)
Vertical Section is from 0.00N 0.00E on azimuth 264.670 degrees
Bottom hole distance is 11043.83 Feet on azimuth 264.67 degrees from Wellhead
Calculation method uses Minimum Curvature method
Prepared by Microsoft
Date Printed: 11-Oct-2018



SYS DRILL
Well Design Combined Report
Wellbore: W Leffler F-26-28HN (PWB)



Targets							
Name	North[ft]	East[ft]	TVD[ft]	Latitude	Longitude	Northing	Easting
Leffler F-26-28HN - BH	1026.03S	10996.06W	7298.00	40.54997500	-104.79272600	1443980.61	3196545.27
Leffler F-26-28HN - EP	944.68S	309.03W	7383.00	40.55020500	-104.75427000	1444151.95	3207230.90

Survey Tool Program					
Reference	Survey Name	MD[ft]	TVD[ft]	Survey Tool	Error Model
676438	Planned	1500.00	1497.84	WdW Rate Gyro	Standard
676437	Planned	18479.36	7298.00	ISCWSA MWD	Rev 4 + SAG + FLT

Notes



SYSDRILL
Closest Approach + Clearance Factor Summary Report
Wellbore: W Leffler F-26-28HN (PWB)



Ellipse separations are reported ONLY if BOTH wells have uncertainty data
Only Depth and Magnetic Reference Field error terms are correlated across tie points
Scan limit is calculated on CENTRE to CENTRE distance
Summary data uses Closest Approach clearance calculation for all minima
Hole size/Casings ARE included
Hole size/Casings are NOT subtracted from Centre-Centre distance
Confidence limit of 95.00% / 2.80 SD.

Wellbore		
Name	Created	Last Revised
W Leffler F-26-28HN (PWB)	Jul-30-2018	Oct-11-2018

Well		
Name	Government ID	Last Revised
W Leffler F-26-28HN		Jul-30-2018

Slot						
Name	Latitude	Longitude	Grid Northing	Grid Easting	North	East
Leffler F-26-28HN	40.55279800	-104.75315800	1445099.1712	3207531.9546	1.82N	104.77E

Installation						
Name	Installation Position (Latitude)	Installation Position (Longitude)	Easting	Northing	Coord System Name	North Alignment
Leffler Pad	40.55279300	-104.75353500	3207427.2119	1445096.4676	CO83-NF on NORTH AMERICAN DATUM 1983 datum	True

Clearance Summary							
Offset WellName	Separation [ft]	MD[ft]	Diverging From[ft]	Ellipse Separation [ft]	Ellipse MD[ft]	Clearance Factor	Clearance MD[ft]
W Thornton 21K-443	99.07	17463.60	17463.60	-11.41	17413.45	0.91	17413.45
W Leffler 27C	177.80	9077.03	9077.03	99.97	9096.52	2.27	9096.52
W Leffler 1-27	487.83	9739.74	9739.74	386.55	9752.69	4.81	9752.69
W Leffler 41-27	592.41	8351.34	8351.34	538.56	8358.33	10.86	8440.35
W Leffler 31-27	604.05	10019.69	10019.69	492.95	10031.56	5.42	10047.97
W Leffler 32-27	1052.15	10019.39	10019.39	939.89	10064.37	9.01	10261.22
W Leffler 42-27	1111.22	8368.96	8368.96	1056.18	8407.55	17.28	8866.86

