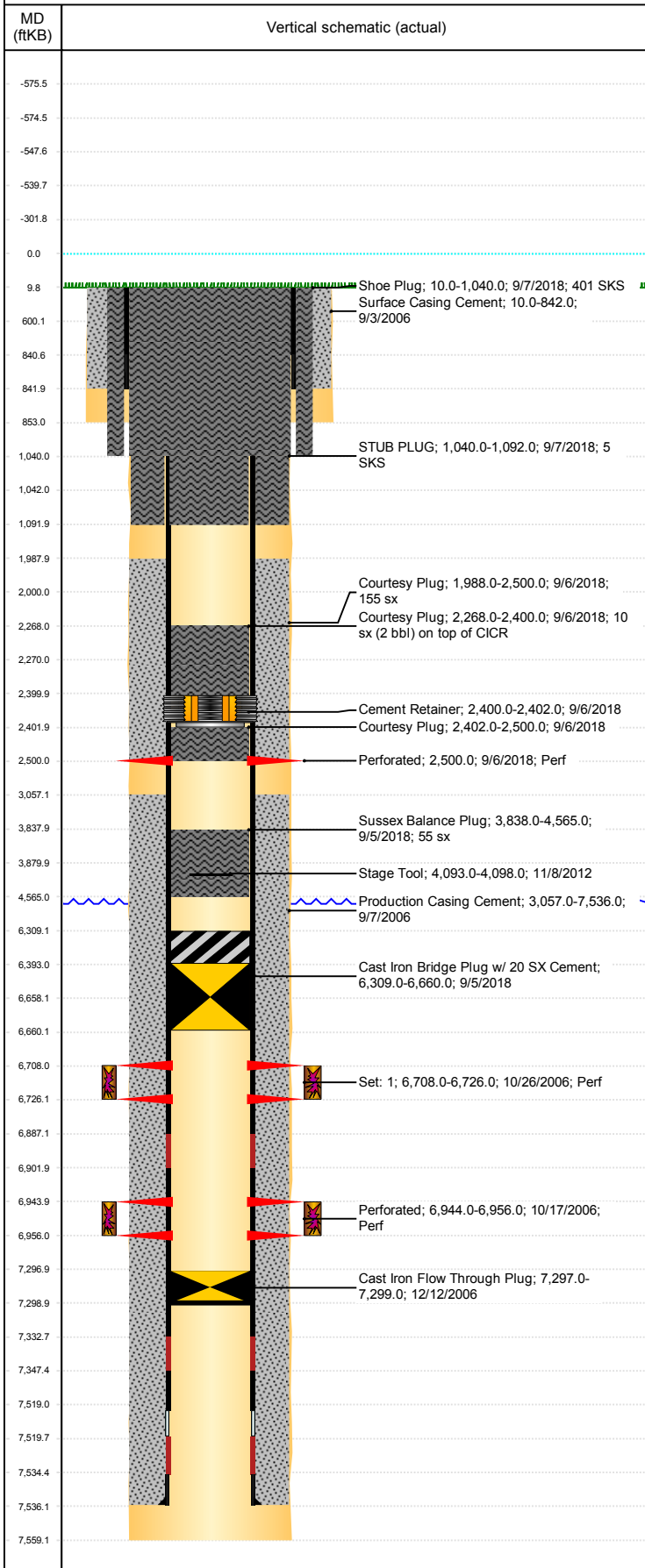


Well Name: WASTE MANAGEMENT D35-09

VERTICAL, ORIGINAL HOLE, 11/23/2018 6:08:09 PM



Well Header									
API 05-123-24179		Business Unit DJ BASIN			District 15		Well Config VERTICAL		
KB - GL / MSL (ft... 10.00		Spud Date 9/2/2006		P & A Date 9/10/2018		Well Production Status PA			SoRT Yes
Comment DISCREPANCY: DRL RPT TD 7550, ST RPT AND LOG 7559. USED 7559'. 12/12/06 - D/O & PUSH CIPF TO 7299'. STAGE TOOL @ 4093'.									
Surface Location (Congressional)									
Qtr 3 NE	Qtr 4 SE	Section 35	Twnshp 3	Twnsh... N	Range 64	Rng E/... W	Actual Latitude (°) 40.17983654	Actual Longitude (°) -104.51168565	
Wellbore Sections									
Section Des			Size (in)			Act Top, MD (ftKB)		Act Btm, MD (ftKB)	
SURFACE			12 1/4			10		853	
PRODUCTION			7 7/8			853		7,559	
Casing Strings									
Csg Des			Run Date		OD (in)	Wt/Len (lb/ft)	Grade	Top, MD (ftKB)	MD (ftKB)
Surface			9/3/2006		8 5/8	24.00	J-55	10.0	842.0
Production			9/6/2006		4 1/2	11.60	M-80	10.0	7,536.0
Cement									
Des					Start Date		Top (ftKB)		Btm (ftKB)
Surface Casing Cement					9/3/2006		10.0		842.0
Production Casing Cement					9/7/2006		3,057.0		7,536.0
Sussex Balance Plug					9/5/2018		3,838.0		4,565.0
Courtesy Plug					9/6/2018		1,988.0		2,500.0
Courtesy Plug					9/6/2018		2,268.0		2,400.0
Courtesy Plug					9/6/2018		2,402.0		2,500.0
STUB PLUG					9/7/2018		1,040.0		1,092.0
Shoe Plug					9/7/2018		10.0		1,040.0
Zone Statuses									
Zone Name	Status Date	Status	Fluid Type	Job				Prod Method	
NIOBRARA	10/28/2006	PR		DRILLING/COMPLETION - ORIGINAL, 9/2/2006...				Flowing	
NIOBRARA	9/5/2018	P&A		PLUG AND ABANDON, 9/4/2018 00:00				Flowing	
CODELL	10/28/2006	PR		DRILLING/COMPLETION - ORIGINAL, 9/2/2006...				Flowing	
CODELL	9/5/2018	P&A		PLUG AND ABANDON, 9/4/2018 00:00				Flowing	
Perforation Data									
Linked Zone			Bnch/Stg	Entered Shot Total	Top (ftKB)		Btm (ftKB)		Date
CODELL, ORIGINAL HOLE				4	2,500.00		2,500.00		9/6/2018
NIOBRARA, ORIGINAL HOLE				108	6,708.00		6,726.00		10/26/2006
CODELL, ORIGINAL HOLE				48	6,944.00		6,956.00		10/17/2006
Stimulation Intervals									
Zone					Start Date		Top (ftKB)		Btm (ftKB)
NIOBRARA, ORIGINAL HOLE					10/26/2006		6,708.0		6,726.0
CODELL, ORIGINAL HOLE					10/26/2006		6,944.0		6,956.0
Other In Hole									
Run Date		Des				OD (in)	Top (ftKB)		Btm (ftKB)
12/12/2006		Cast Iron Flow Through Plug				3.99	7,297.0		7,299.0
9/5/2018		Cast Iron Bridge Plug w/ 20 SX Cement				4	6,309.0		6,660.0
9/6/2018		Cement Retainer				4	2,400.0		2,402.0
Logs									
Date		Type				Top, MD (ftKB)		Btm, MD (ftKB)	
9/6/2006		COMPENSATED DENSITY				2,200.0		7,539.0	
9/6/2006		INDUCTION				846.0		7,559.0	
10/17/2006		CEMENT BOND				2,920.0		7,504.0	
5/22/2018		GYRO				10.0		6,850.0	
Plug Back Total Depths									
Date		Type		Com				Depth (ftKB)	
10/17/2006		FILL		DEPTH LOGGER ON CBL				7,506.0	
12/12/2006		FILL		D/O & PUSH CIPF TO 7299', CIRCULATE HOLE CLEAN				7,299.0	