

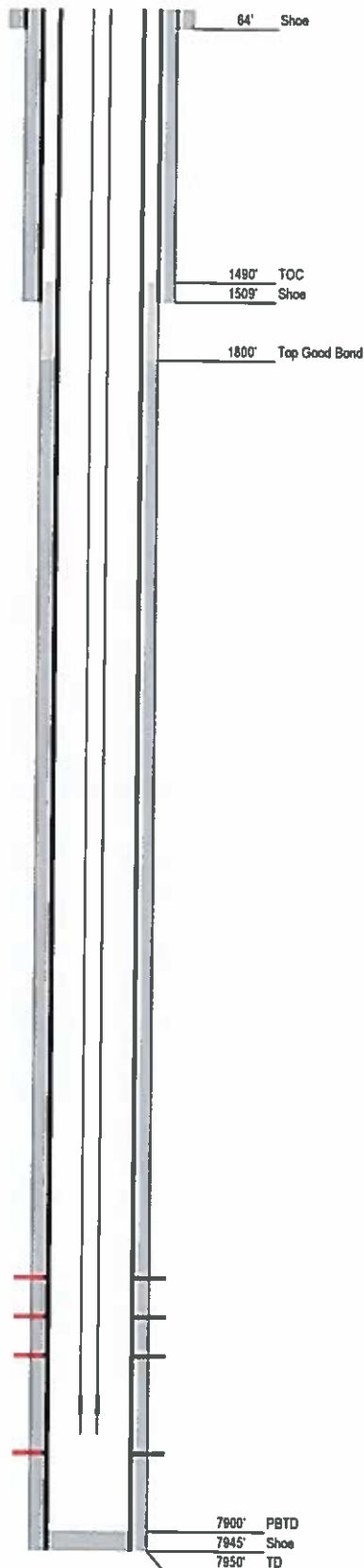
# Laramie Energy

## Current Wellbore Diagram

Not to Scale

FEDERAL WELL: YES ☐ NO ☒

Geological Tops	Depth
Wasatch G	2966'
Ohio Creek / Mesaverde	4798'
Williams Fork	5138'
Top of Gas	6480'
Cameo	7362'
Rollins	7786'



Well Name Griffith 11-1B  
 API 05-077-09481  
 Surface Location 1186' FNL & 1322' FEL NWNE S11 T09S R94W  
 GPS Coordinates 39.295110 -107.845030  
 Bottom Hole Loc 1038' FNL & 647' FEL S11 T09S R94W  
 Field Brush Creek # 7562  
 County, State Mesa, CO # 077  
 Spud Date 4/3/2008  
 Completion Date 8/19/2008  
 Diagram Date 11/20/2008  
 KB Elevation 7659'  
 KB 24'  
 GL Elevation 7635'

Hole 24"  
 Conductor 18" 25" wall @ 64'  
 Cement 4 yds to surface

Surface Hole 12.25" @ 1509'  
 Casing 8.625" 32# J55 Brd STC @ 1509'  
 Cement Lead: 240 ax 12.3# 2.37 yield Tail: 200 ax 14.2# 1.44 yield  
 TOC surface (calc)

Production Hole 7.875" @ 7950'  
 Casing 4.5" 11.8# I80 Brd LTC @ 7945'  
 Cement Lead: 650 ax 11.0# 2.75 yield Tail: 460 ax 13.5# 1.45 yield  
 TOC 1490'  
 Top Good Bond 1800'  
 CBL Date 6/23/2008

Tubing 2-3/8" 4.7# EUE estimated @ 7305'. F nipple @ 7270'

Perforations	Top	Bottom
Williams Fork	6490'	6600'
Williams Fork	6741'	6871'
Williams Fork	6945'	7109'
Cameo	7400'	7574'

# Laramie Energy

## Proposed P&A Wellbore Diagram

Not to Scale

FEDERAL WELL: YES ☐ NO ☒

Geological Tops	Depth
Wasatch G	2966'
Ohio Creek / Mesaverde	4798'
Williams Fork	5138'
Top of Gas	6480'
Cameo	7362'
Rollins	7786'



Well Name Griffith 11-1B  
 API 05-077-09481  
 Surface Location 1186' FNL & 1322' FEL NWNE S11 T09S R94W  
 GPS Coordinates 39.295110 -107.845030  
 Bottom Hole Loc 1038' FNL & 647' FEL S11 T09S R94W  
 Field Brush Creek # 7582  
 County, State Mesa, CO # 077  
 Spud Date 4/3/2008  
 Completion Date 8/19/2008  
 Diagram Date 11/20/2008  
 KB Elevation 7659'  
 KB 24'  
 GL Elevation 7635'

Hole 24"  
 Conductor 16" .25" wall @ 64"  
 Cement 4 yds to surface

Surface Hole 12.25" @ 1509'  
 Casing 8.625" 32# J55 8rd STC @ 1509'  
 Cement Lead: 240 sx 12.3# 2.37 yield Tail: 200 sx 14.2# 1.44 yield  
 TOC surface (calc)

Production Hole 7.875" @ 7950'  
 Casing 4.5" 11 6# I80 8rd LTC @ 7945'  
 Cement Lead: 650 sx 11.0# 2.75 yield Tail: 460 sx 13.5# 1.45 yield  
 TOC 1490'  
 Top Good Bond 1800'  
 CBL Date 6/23/2008

Tubing None

Perforations	Top	Bottom
Williams Fork	6490'	6600'
Williams Fork	6741'	6871'
Williams Fork	6945'	7109'
Cameo	7400'	7574'