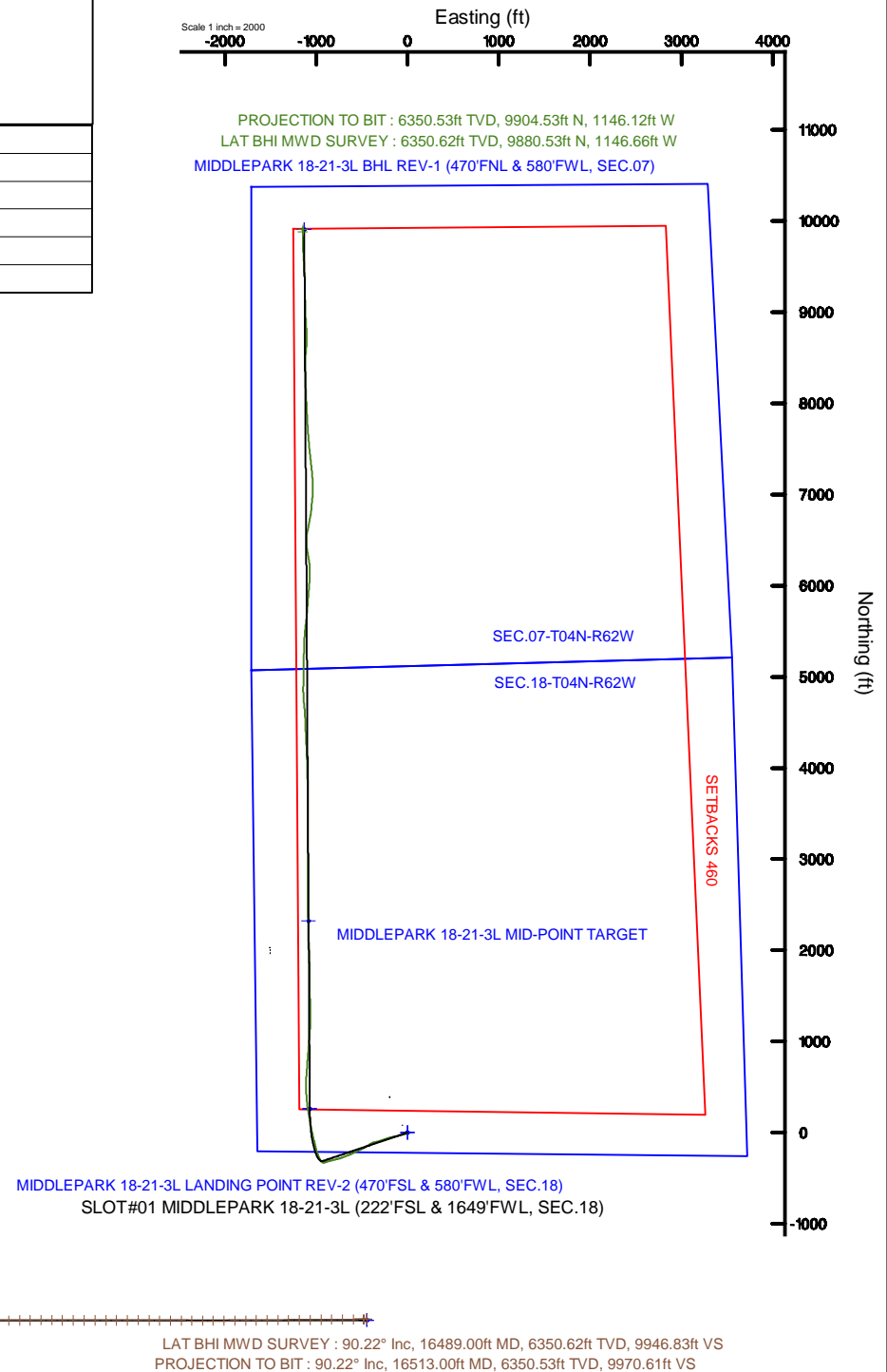


Location: COLORADO	Slot: SLOT#01 MIDDLEPARK 18-21-3L (222'FSL & 1649'FWL, SEC.18)
Field: WELD COUNTY (NAD83, TRUE NORTH)	Well: MIDDLEPARK 18-21-3L
Facility: SEC.18-T04N-R62W	Wellbore: MIDDLEPARK 18-21-3L PWB
Plot reference wellpath is MIDDLEPARK 18-21-3L (REV-B.1) PWP	Grid System: NAD83 / Lambert Colorado SP, Northern Zone (501), US feet
True vertical depths are referenced to RIG (16') (RKB)	North Reference: True north
Measured depths are referenced to RIG (16') (RKB)	Scale: True distance
RIG (16') (RKB) to Mean Sea Level: 4573 feet	Depths are in feet
Mean Sea Level to Mud line (At Slot: SLOT#01 MIDDLEPARK 18-21-3L (222'FSL & 1649'FWL, SEC.18)): 0 feet	Created by: doddanna on 2018-10-05
Coordinates are in feet referenced to Slot	Database: WellArchitectDB2



Actual Wellpath Report

MIDDLEPARK 18-21-3L AWP

Page 1 of 10

REFERENCE WELLPATH IDENTIFICATION

Operator	CONFLUENCE RESOURCES	Slot	SLOT#01 MIDDLEPARK 18-21-3L (222'FSL & 1649'FWL, SEC.18)
Area	COLORADO	Well	MIDDLEPARK 18-21-3L
Field	WELD COUNTY (NAD83, TRUE NORTH)	Wellbore	MIDDLEPARK 18-21-3L AWB
Facility	SEC.18-T04N-R62W		

REPORT SETUP INFORMATION

Projection System	NAD83 / Lambert Colorado SP, Northern Zone (501), US feet	Software System	WellArchitect® 5.1
North Reference	True	User	Doddanna
Scale	0.999957	Report Generated	10/5/2018 at 9:05:24 AM
Convergence at slot	0.73° East	Database/Source file	WellArchitectDB2/MIDDLEPARK_18-21-3L_AWP.xml

WELLPATH LOCATION

	Local coordinates		Grid coordinates		Geographic coordinates	
	North[ft]	East[ft]	Easting[US ft]	Northing[US ft]	Latitude	Longitude
Slot Location	0.00	0.00	3314967.04	1356246.05	40°18'20.844"N	104°22'14.304"W
Facility Reference Pt			3314967.04	1356246.05	40°18'20.844"N	104°22'14.304"W
Field Reference Pt			3230456.90	1245096.09	40°00'11.664"N	104°40'38.424"W

WELLPATH DATUM

Calculation method	Minimum curvature	RIG (16') (RKB) to Facility Vertical Datum	4573.00ft
Horizontal Reference Pt	Slot	RIG (16') (RKB) to Mean Sea Level	4573.00ft
Vertical Reference Pt	RIG (16') (RKB)	RIG (16') (RKB) to Mud Line at Slot (SLOT#01 MIDDLEPARK 18-21-3L (222'FSL & 1649'FWL, SEC.18))	4573.00ft
MD Reference Pt	RIG (16') (RKB)	Section Origin	N 0.00, E 0.00 ft
Field Vertical Reference	Mean Sea Level	Section Azimuth	353.48°

Actual Wellpath Report

MIDDLEPARK 18-21-3L AWP

Page 2 of 10

REFERENCE WELLPATH IDENTIFICATION

Operator	CONFLUENCE RESOURCES	Slot	SLOT#01 MIDDLEPARK 18-21-3L (222'FSL & 1649'FWL, SEC.18)
Area	COLORADO	Well	MIDDLEPARK 18-21-3L
Field	WELD COUNTY (NAD83, TRUE NORTH)	Wellbore	MIDDLEPARK 18-21-3L AWB
Facility	SEC.18-T04N-R62W		

WELLPATH DATA (188 stations) † = interpolated/extrapolated station

MD [ft]	Inclination [°]	Azimuth [°]	TVD [ft]	Vert Sect [ft]	North [ft]	East [ft]	DLS [°/100ft]	Comments
0.00†	0.000	273.320	0.00	0.00	0.00	0.00	0.00	
16.00	0.000	273.320	16.00	0.00	0.00	0.00	0.00	
112.00	0.340	273.320	112.00	0.05	0.02	-0.28	0.35	
205.00	0.380	323.550	205.00	0.36	0.28	-0.74	0.33	
297.00	0.260	281.160	297.00	0.69	0.57	-1.13	0.28	
386.00	0.250	201.670	386.00	0.58	0.42	-1.40	0.37	
475.00	0.610	293.460	474.99	0.65	0.43	-1.91	0.75	
564.00	0.600	238.110	563.99	0.68	0.38	-2.74	0.63	
653.00	0.740	259.380	652.98	0.44	0.02	-3.70	0.32	
741.00	1.140	266.740	740.97	0.45	-0.13	-5.13	0.47	
830.00	0.940	237.070	829.96	0.18	-0.58	-6.63	0.64	
919.00	0.830	254.960	918.95	-0.24	-1.14	-7.86	0.33	
1008.00	0.190	89.070	1007.94	-0.35	-1.31	-8.34	1.14	
1096.00	0.400	78.770	1095.94	-0.34	-1.25	-7.89	0.25	
1185.00	0.610	113.270	1184.94	-0.55	-1.37	-7.15	0.41	
1274.00	1.230	83.010	1273.93	-0.78	-1.44	-5.76	0.86	
1363.00	1.260	105.300	1362.91	-1.13	-1.58	-3.87	0.54	
1452.00	1.330	112.950	1451.89	-2.01	-2.25	-1.98	0.21	
1517.00	1.120	103.000	1516.87	-2.59	-2.68	-0.66	0.46	
1610.00	1.020	108.910	1609.85	-3.25	-3.16	1.00	0.16	
1699.00	4.200	239.370	1698.78	-4.92	-5.07	-1.05	5.53	
1788.00	7.280	246.080	1787.33	-7.94	-9.02	-9.01	3.54	
1876.00	8.960	251.040	1874.44	-11.08	-13.51	-20.59	2.07	
1965.00	10.570	256.260	1962.15	-13.60	-17.70	-35.08	2.06	
2054.00	12.210	254.540	2049.40	-16.09	-22.15	-52.08	1.88	
2143.00	12.180	252.750	2136.39	-19.30	-27.44	-70.12	0.43	
2232.00	13.030	256.110	2223.24	-22.34	-32.63	-88.82	1.26	
2320.00	14.010	258.730	2308.80	-24.49	-37.10	-108.90	1.31	
2409.00	13.970	259.470	2395.16	-26.14	-41.17	-130.03	0.21	
2498.00	14.110	260.160	2481.51	-27.52	-44.98	-151.28	0.25	

Actual Wellpath Report

MIDDLEPARK 18-21-3L AWP

Page 3 of 10

REFERENCE WELLPATH IDENTIFICATION

Operator	CONFLUENCE RESOURCES	Slot	SLOT#01 MIDDLEPARK 18-21-3L (222'FSL & 1649'FWL, SEC.18)
Area	COLORADO	Well	MIDDLEPARK 18-21-3L
Field	WELD COUNTY (NAD83, TRUE NORTH)	Wellbore	MIDDLEPARK 18-21-3L AWB
Facility	SEC.18-T04N-R62W		

WELLPATH DATA (188 stations)

MD [ft]	Inclination [°]	Azimuth [°]	TVD [ft]	Vert Sect [ft]	North [ft]	East [ft]	DLS [°/100ft]	Comments
2587.00	14.120	256.470	2567.82	-29.47	-49.38	-172.52	1.01	
2676.00	14.130	252.950	2654.13	-32.78	-55.10	-193.46	0.97	
2765.00	14.040	250.690	2740.46	-37.16	-61.86	-214.04	0.63	
2854.00	13.940	251.290	2826.82	-41.81	-68.87	-234.38	0.20	
2943.00	14.130	251.920	2913.16	-46.25	-75.68	-254.86	0.27	
3032.00	13.890	250.800	2999.51	-50.77	-82.56	-275.28	0.41	
3121.00	13.230	253.020	3086.03	-54.97	-89.05	-295.11	0.94	
3210.00	12.790	254.590	3172.75	-58.34	-94.64	-314.34	0.63	
3298.00	13.180	256.740	3258.50	-61.02	-99.53	-333.50	0.71	
3387.00	14.030	257.590	3345.00	-63.32	-104.18	-353.91	0.98	
3476.00	14.130	251.910	3431.33	-66.61	-109.87	-374.77	1.56	
3565.00	14.170	243.500	3517.64	-72.51	-118.10	-394.85	2.31	
3654.00	14.180	237.760	3603.93	-80.96	-128.78	-413.82	1.58	
3743.00	14.110	237.760	3690.23	-90.40	-140.38	-432.22	0.08	
3831.00	14.180	238.690	3775.57	-99.58	-151.71	-450.50	0.27	
3921.00	14.100	238.950	3862.84	-108.75	-163.09	-469.31	0.11	
4010.00	13.980	241.790	3949.18	-117.23	-173.76	-488.07	0.79	
4099.00	14.030	245.030	4035.54	-124.61	-183.40	-507.33	0.88	
4188.00	14.200	245.040	4121.85	-131.48	-192.56	-527.00	0.19	
4276.00	14.360	243.090	4207.13	-138.70	-202.05	-546.52	0.58	
4365.00	14.140	242.420	4293.39	-146.45	-212.08	-566.00	0.31	
4454.00	14.150	245.330	4379.70	-153.75	-221.65	-585.52	0.80	
4543.00	14.170	245.940	4465.99	-160.42	-230.64	-605.35	0.17	
4632.00	14.200	247.220	4552.28	-166.76	-239.30	-625.36	0.35	
4720.00	14.220	249.920	4637.59	-172.31	-247.19	-645.47	0.75	
4809.00	14.310	249.780	4723.84	-177.48	-254.75	-666.05	0.11	
4898.00	14.270	248.340	4810.09	-182.95	-262.60	-686.57	0.40	
4987.00	13.710	249.330	4896.45	-188.40	-270.37	-706.63	0.68	
5076.00	12.400	251.400	4983.15	-192.98	-277.14	-725.56	1.56	
5165.00	13.080	253.730	5069.96	-196.68	-283.01	-744.28	0.96	

Actual Wellpath Report

MIDDLEPARK 18-21-3L AWP

Page 4 of 10

REFERENCE WELLPATH IDENTIFICATION

Operator	CONFLUENCE RESOURCES	Slot	SLOT#01 MIDDLEPARK 18-21-3L (222'FSL & 1649'FWL, SEC.18)
Area	COLORADO	Well	MIDDLEPARK 18-21-3L
Field	WELD COUNTY (NAD83, TRUE NORTH)	Wellbore	MIDDLEPARK 18-21-3L AWB
Facility	SEC.18-T04N-R62W		

WELLPATH DATA (188 stations)

MD [ft]	Inclination [°]	Azimuth [°]	TVD [ft]	Vert Sect [ft]	North [ft]	East [ft]	DLS [°/100ft]	Comments
5254.00	14.200	253.870	5156.45	-200.21	-288.87	-764.44	1.26	
5343.00	14.030	255.510	5242.76	-203.53	-294.60	-785.37	0.49	
5432.00	13.540	256.210	5329.19	-206.34	-299.78	-805.93	0.58	
5521.00	13.840	256.500	5415.67	-208.95	-304.75	-826.40	0.35	
5610.00	14.030	255.270	5502.05	-211.79	-309.98	-847.18	0.40	
5698.00	13.880	254.630	5587.45	-214.94	-315.49	-867.68	0.24	
5787.00	13.630	252.780	5673.90	-218.53	-321.42	-887.99	0.57	
5876.00	14.720	250.510	5760.19	-223.01	-328.30	-908.66	1.37	
5965.00	15.890	286.930	5846.22	-220.70	-328.52	-931.03	10.71	
6054.00	18.490	324.020	5931.49	-203.51	-313.51	-951.04	12.43	
6143.00	24.080	338.640	6014.45	-173.62	-285.14	-965.97	8.62	
6232.00	33.280	340.230	6092.44	-132.21	-245.16	-980.87	10.37	
6320.00	40.910	343.950	6162.59	-80.21	-194.67	-997.03	9.03	
6409.00	47.840	346.340	6226.17	-18.66	-134.53	-1012.90	8.01	
6498.00	56.870	346.440	6280.48	51.20	-66.11	-1029.46	10.15	
6587.00	66.950	347.450	6322.33	129.10	10.29	-1047.14	11.37	
6676.00	74.330	349.110	6351.82	212.67	92.45	-1064.16	8.48	
6765.00	81.450	350.170	6370.47	299.43	177.99	-1079.79	8.08	
6854.00	90.550	352.200	6376.68	388.05	265.63	-1093.37	10.47	
6942.00	90.800	354.440	6375.64	476.04	353.02	-1103.60	2.56	
7032.00	90.280	356.480	6374.79	565.97	442.73	-1110.73	2.34	
7120.00	90.060	1.330	6374.53	653.55	530.69	-1112.41	5.52	
7209.00	90.090	4.600	6374.41	741.33	619.56	-1107.80	3.67	
7298.00	89.970	3.650	6374.37	828.79	708.33	-1101.40	1.08	
7387.00	89.970	4.380	6374.41	916.29	797.11	-1095.17	0.82	
7476.00	90.030	5.320	6374.41	1003.55	885.79	-1087.65	1.06	
7565.00	89.850	5.240	6374.51	1090.66	974.41	-1079.46	0.22	
7653.00	89.970	3.720	6374.65	1177.05	1062.14	-1072.58	1.73	
7743.00	89.850	2.740	6374.79	1265.74	1152.00	-1067.51	1.10	
7831.00	89.880	0.990	6374.99	1352.80	1239.95	-1064.65	1.99	

Actual Wellpath Report

MIDDLEPARK 18-21-3L AWP

Page 5 of 10

REFERENCE WELLPATH IDENTIFICATION			
Operator	CONFLUENCE RESOURCES	Slot	SLOT#01 MIDDLEPARK 18-21-3L (222'FSL & 1649'FWL, SEC.18)
Area	COLORADO	Well	MIDDLEPARK 18-21-3L
Field	WELD COUNTY (NAD83, TRUE NORTH)	Wellbore	MIDDLEPARK 18-21-3L AWB
Facility	SEC.18-T04N-R62W		

WELLPATH DATA (188 stations)

MD [ft]	Inclination [°]	Azimuth [°]	TVD [ft]	Vert Sect [ft]	North [ft]	East [ft]	DLS [°/100ft]	Comments
7920.00	89.780	359.120	6375.26	1441.21	1328.94	-1064.56	2.10	
8009.00	89.940	358.010	6375.48	1529.86	1417.91	-1066.79	1.26	
8097.00	89.970	358.590	6375.55	1617.55	1505.87	-1069.40	0.66	
8186.00	90.030	359.900	6375.55	1706.10	1594.86	-1070.57	1.47	
8275.00	90.000	359.600	6375.52	1794.56	1683.86	-1070.96	0.34	
8363.00	90.120	358.300	6375.43	1882.16	1771.84	-1072.58	1.48	
8452.00	90.000	358.170	6375.34	1970.85	1860.80	-1075.32	0.20	
8541.00	90.060	357.990	6375.29	2059.57	1949.75	-1078.30	0.21	
8630.00	90.090	358.650	6375.17	2148.25	2038.71	-1080.91	0.74	
8719.00	89.970	358.990	6375.13	2236.86	2127.69	-1082.74	0.41	
8808.00	90.000	358.060	6375.15	2325.52	2216.66	-1085.03	1.05	
8897.00	90.220	358.520	6374.98	2414.20	2305.62	-1087.69	0.57	
8986.00	90.000	358.260	6374.81	2502.88	2394.59	-1090.19	0.38	
9074.00	90.150	358.970	6374.69	2590.52	2482.56	-1092.32	0.82	
9164.00	90.090	0.190	6374.50	2680.01	2572.56	-1092.97	1.36	
9253.00	90.800	0.870	6373.81	2768.34	2661.55	-1092.15	1.10	
9342.00	90.830	0.950	6372.55	2856.58	2750.53	-1090.74	0.10	
9430.00	90.830	0.050	6371.27	2943.91	2838.52	-1089.97	1.02	
9519.00	90.890	359.890	6369.94	3032.33	2927.51	-1090.02	0.19	
9608.00	90.770	359.220	6368.65	3120.82	3016.49	-1090.71	0.76	
9697.00	90.460	359.210	6367.69	3209.37	3105.48	-1091.93	0.35	
9786.00	90.150	0.190	6367.22	3297.84	3194.48	-1092.39	1.15	
9875.00	90.220	0.640	6366.93	3386.19	3283.47	-1091.75	0.51	
9963.00	90.280	359.330	6366.55	3473.62	3371.47	-1091.77	1.49	
10052.00	90.280	359.550	6366.11	3562.14	3460.47	-1092.64	0.25	
10141.00	90.620	0.220	6365.41	3650.58	3549.46	-1092.82	0.84	
10230.00	90.680	0.640	6364.40	3738.92	3638.45	-1092.15	0.48	
10318.00	90.520	0.190	6363.48	3826.27	3726.45	-1091.52	0.54	
10407.00	90.220	357.880	6362.91	3914.85	3815.43	-1093.01	2.62	
10495.00	89.850	357.170	6362.85	4002.63	3903.34	-1096.81	0.91	

Actual Wellpath Report

MIDDLEPARK 18-21-3L AWP

Page 6 of 10

REFERENCE WELLPATH IDENTIFICATION

Operator	CONFLUENCE RESOURCES	Slot	SLOT#01 MIDDLEPARK 18-21-3L (222'FSL & 1649'FWL, SEC.18)
Area	COLORADO	Well	MIDDLEPARK 18-21-3L
Field	WELD COUNTY (NAD83, TRUE NORTH)	Wellbore	MIDDLEPARK 18-21-3L AWB
Facility	SEC.18-T04N-R62W		

WELLPATH DATA (188 stations)

MD [ft]	Inclination [°]	Azimuth [°]	TVD [ft]	Vert Sect [ft]	North [ft]	East [ft]	DLS [°/100ft]	Comments
10584.00	89.690	359.190	6363.21	4091.32	3992.29	-1099.64	2.28	
10717.00	89.850	357.420	6363.74	4223.85	4125.23	-1103.57	1.34	
10806.00	89.820	357.680	6364.00	4312.62	4214.15	-1107.38	0.29	
10894.00	89.820	357.620	6364.28	4400.39	4302.07	-1110.99	0.07	
10983.00	89.690	356.870	6364.66	4489.20	4390.97	-1115.26	0.86	
11072.00	89.780	358.090	6365.07	4577.98	4479.88	-1119.18	1.37	
11160.00	89.780	357.130	6365.41	4665.75	4567.80	-1122.85	1.09	
11249.00	89.970	354.280	6365.60	4754.67	4656.54	-1129.51	3.21	
11338.00	90.220	355.080	6365.45	4843.65	4745.16	-1137.76	0.94	
11427.00	90.650	359.260	6364.78	4932.44	4834.03	-1142.16	4.72	
11516.00	90.460	2.130	6363.92	5020.72	4923.01	-1141.08	3.23	
11605.00	90.460	2.050	6363.20	5108.72	5011.94	-1137.83	0.09	
11693.00	90.550	359.410	6362.43	5196.00	5099.93	-1136.71	3.00	
11782.00	90.650	0.540	6361.49	5284.43	5188.92	-1136.75	1.27	
11871.00	90.400	2.620	6360.68	5372.53	5277.88	-1134.30	2.35	
11959.00	90.650	0.850	6359.87	5459.61	5365.83	-1131.63	2.03	
12048.00	89.940	5.070	6359.41	5547.38	5454.69	-1127.04	4.81	
12137.00	90.090	6.310	6359.39	5634.36	5543.25	-1118.21	1.40	
12226.00	90.090	6.430	6359.25	5721.12	5631.70	-1108.34	0.13	
12314.00	90.180	4.600	6359.04	5807.18	5719.29	-1099.88	2.08	
12403.00	90.030	4.290	6358.88	5894.56	5808.02	-1092.98	0.39	
12492.00	89.940	3.750	6358.90	5982.05	5896.80	-1086.74	0.62	
12581.00	89.970	5.560	6358.97	6069.36	5985.50	-1079.52	2.03	
12669.00	89.850	2.960	6359.11	6155.80	6073.25	-1072.99	2.96	
12758.00	89.850	359.400	6359.34	6243.99	6162.22	-1071.15	4.00	
12847.00	89.880	353.590	6359.55	6332.82	6251.01	-1076.59	6.53	
12937.00	89.910	348.330	6359.72	6422.71	6339.86	-1090.73	5.84	
13026.00	89.910	353.220	6359.86	6511.58	6427.69	-1104.99	5.49	
13115.00	90.030	3.640	6359.91	6600.13	6516.53	-1107.43	11.71	
13203.00	89.880	12.380	6359.98	6685.23	6603.59	-1095.18	9.93	

Actual Wellpath Report

MIDDLEPARK 18-21-3L AWP

Page 7 of 10

REFERENCE WELLPATH IDENTIFICATION

Operator	CONFLUENCE RESOURCES	Slot	SLOT#01 MIDDLEPARK 18-21-3L (222'FSL & 1649'FWL, SEC.18)
Area	COLORADO	Well	MIDDLEPARK 18-21-3L
Field	WELD COUNTY (NAD83, TRUE NORTH)	Wellbore	MIDDLEPARK 18-21-3L AWB
Facility	SEC.18-T04N-R62W		

WELLPATH DATA (188 stations)

MD [ft]	Inclination [°]	Azimuth [°]	TVD [ft]	Vert Sect [ft]	North [ft]	East [ft]	DLS [°/100ft]	Comments
13292.00	89.910	11.280	6360.14	6769.70	6690.70	-1076.93	1.24	
13381.00	90.150	8.220	6360.09	6855.13	6778.40	-1061.86	3.45	
13470.00	90.340	5.380	6359.71	6941.72	6866.76	-1051.32	3.20	
13559.00	90.180	5.080	6359.31	7028.86	6955.39	-1043.21	0.38	
13648.00	90.310	0.990	6358.93	7116.60	7044.25	-1038.50	4.60	
13736.00	90.340	357.560	6358.43	7204.14	7132.23	-1039.61	3.90	
13825.00	90.080	355.250	6358.10	7293.02	7221.04	-1045.19	2.61	
13914.00	89.850	353.170	6358.16	7382.01	7309.58	-1054.17	2.35	
14003.00	89.850	353.370	6358.39	7471.00	7397.97	-1064.60	0.22	
14091.00	89.880	354.410	6358.60	7559.00	7485.47	-1073.97	1.18	
14180.00	90.180	355.290	6358.55	7647.97	7574.11	-1081.96	1.04	
14269.00	89.910	355.880	6358.48	7736.91	7662.85	-1088.81	0.73	
14358.00	89.910	356.830	6358.62	7825.80	7751.66	-1094.47	1.07	
14447.00	90.030	356.290	6358.67	7914.67	7840.50	-1099.81	0.62	
14536.00	90.120	357.210	6358.55	8003.53	7929.36	-1104.85	1.04	
14625.00	90.280	357.390	6358.24	8092.33	8018.26	-1109.04	0.27	
14714.00	89.540	357.420	6358.38	8181.12	8107.17	-1113.07	0.83	
14802.00	89.450	358.300	6359.15	8268.86	8195.10	-1116.36	1.01	
14891.00	89.480	358.870	6359.98	8357.50	8284.07	-1118.56	0.64	
14980.00	89.600	358.660	6360.70	8446.12	8373.05	-1120.48	0.27	
15068.00	89.720	2.500	6361.22	8533.43	8461.02	-1119.58	4.37	
15157.00	90.000	5.220	6361.44	8620.96	8549.81	-1113.59	3.07	
15246.00	89.750	2.730	6361.63	8708.47	8638.59	-1107.43	2.81	
15335.00	90.520	359.180	6361.42	8796.70	8727.56	-1105.94	4.08	
15424.00	90.520	357.670	6360.62	8885.36	8816.53	-1108.39	1.70	
15513.00	90.550	356.070	6359.78	8974.20	8905.39	-1113.25	1.80	
15602.00	90.550	357.020	6358.93	9063.06	8994.22	-1118.61	1.07	
15691.00	90.650	359.300	6358.00	9151.76	9083.16	-1121.47	2.56	
15779.00	90.580	359.680	6357.05	9239.27	9171.15	-1122.25	0.44	
15868.00	90.740	359.030	6356.03	9327.79	9260.14	-1123.25	0.75	

Actual Wellpath Report

MIDDLEPARK 18-21-3L AWP

Page 8 of 10

REFERENCE WELLPATH IDENTIFICATION

Operator	CONFLUENCE RESOURCES	Slot	SLOT#01 MIDDLEPARK 18-21-3L (222'FSL & 1649'FWL, SEC.18)
Area	COLORADO	Well	MIDDLEPARK 18-21-3L
Field	WELD COUNTY (NAD83, TRUE NORTH)	Wellbore	MIDDLEPARK 18-21-3L AWP
Facility	SEC.18-T04N-R62W		

WELLPATH DATA (188 stations)

MD [ft]	Inclination [°]	Azimuth [°]	TVD [ft]	Vert Sect [ft]	North [ft]	East [ft]	DLS [°/100ft]	Comments
15957.00	90.460	358.240	6355.10	9416.43	9349.11	-1125.37	0.94	
16046.00	90.280	357.250	6354.52	9505.18	9438.04	-1128.87	1.13	
16135.00	90.620	356.510	6353.82	9594.02	9526.90	-1133.72	0.91	
16223.00	90.520	356.370	6352.95	9681.90	9614.73	-1139.18	0.20	
16312.00	90.550	357.430	6352.12	9770.73	9703.59	-1144.00	1.19	
16401.00	90.580	358.930	6351.24	9859.43	9792.54	-1146.82	1.69	
16489.00	90.220	1.280	6350.62	9946.83	9880.53	-1146.66	2.70	LAT BHI MWD SURVEY
16513.00	90.220	1.280	6350.53	9970.61	9904.53	-1146.12	0.00	PROJECTION TO BIT

Actual Wellpath Report

MIDDLEPARK 18-21-3L AWP

Page 9 of 10

REFERENCE WELLPATH IDENTIFICATION

Operator	CONFLUENCE RESOURCES	Slot	SLOT#01 MIDDLEPARK 18-21-3L (222'FSL & 1649'FWL, SEC.18)
Area	COLORADO	Well	MIDDLEPARK 18-21-3L
Field	WELD COUNTY (NAD83, TRUE NORTH)	Wellbore	MIDDLEPARK 18-21-3L AWB
Facility	SEC.18-T04N-R62W		

TARGETS

Name	TVD [ft]	North [ft]	East [ft]	Grid East [US ft]	Grid North [US ft]	Latitude	Longitude	Shape
SEC.07-T04N-R62W	0.00	0.00	0.00	3314967.04	1356246.05	40°18'20.844"N	104°22'14.304"W	polygon
SEC.18-T04N-R62W	0.00	0.00	0.00	3314967.04	1356246.05	40°18'20.844"N	104°22'14.304"W	polygon
MIDDLEPARK 18-21-3L BHL ON PLAT (470'FNL & 1338'FWL, SEC.07)	6357.00	9905.54	-1131.92	3313709.11	1366135.93	40°19'58.728"N	104°22'28.920"W	point
MIDDLEPARK 18-21-3L BHL REV-1 (470'FNL & 580'FWL, SEC.07)	6357.00	9905.54	-1131.92	3313709.11	1366135.93	40°19'58.728"N	104°22'28.920"W	point
MIDDLEPARK 18-21-3L LANDING POINT ON PLAT (470'FSL & 1338'FWL, SEC.18)	6357.00	258.68	-1071.00	3313892.88	1356491.06	40°18'23.400"N	104°22'28.128"W	point
MIDDLEPARK 18-21-3L MID-POINT TARGET	6357.00	2321.71	-1084.03	3313853.58	1358553.66	40°18'43.786"N	104°22'28.297"W	point
SETBACKS 460	6357.00	0.00	0.00	3314967.04	1356246.05	40°18'20.844"N	104°22'14.304"W	polygon
MIDDLEPARK 18-21-3L LANDING POINT REV-1 (470'FSL & 1338'FWL, SEC.18)	6377.00	258.68	-1071.00	3313892.88	1356491.06	40°18'23.400"N	104°22'28.128"W	point
MIDDLEPARK 18-21-3L LANDING POINT REV-2 (470'FSL & 580'FWL, SEC.18)	6377.00	258.68	-1071.00	3313892.88	1356491.06	40°18'23.400"N	104°22'28.128"W	point

WELLPATH COMPOSITION - Ref Wellbore: MIDDLEPARK 18-21-3L AWB Ref Wellpath: MIDDLEPARK 18-21-3L AWP

Start MD [ft]	End MD [ft]	Positional Uncertainty Model	Log Name/Comment	Wellbore
16.00	1517.00	BHI NaviTrak (Rotating+Axial Corr)	13 1/2" SURFACE SURVEYS <112-1517>	MIDDLEPARK 18-21-3L AWB
1517.00	16489.00	BHI AutoTrak Curve (Standard)	8 1/2" MONOBORE SURVEYS <1610-16489>	MIDDLEPARK 18-21-3L AWB
16489.00	16513.00	Blind Drilling (std)	Projection to bit	MIDDLEPARK 18-21-3L AWB

Actual Wellpath Report

MIDDLEPARK 18-21-3L AWP

Page 10 of 10

REFERENCE WELLPATH IDENTIFICATION			
Operator	CONFLUENCE RESOURCES	Slot	SLOT#01 MIDDLEPARK 18-21-3L (222'FSL & 1649'FWL, SEC.18)
Area	COLORADO	Well	MIDDLEPARK 18-21-3L
Field	WELD COUNTY (NAD83, TRUE NORTH)	Wellbore	MIDDLEPARK 18-21-3L AWB
Facility	SEC.18-T04N-R62W		

WELLPATH COMMENTS				
MD [ft]	Inclination [°]	Azimuth [°]	TVD [ft]	Comment
16489.00	90.220	1.280	6350.62	LAT BHI MWD SURVEY
16513.00	90.220	1.280	6350.53	PROJECTION TO BIT