



# RESERVOIR GROUP

Scale: 5" / 100'  
Measured Depth Log

**Well Name** Middlepark 18-5-4L

**Location** N40.30601, W104.37085

**State** CO

**County** Weld

**Country** USA

**Rig Number** Xtreme24

**API Number** 05-123-47466

**Field** Wattenburg

**Geographic Region** Rockies

**Drilling Completed** 9/26/2018

**Spud Date** 9/14/2018

**Surface Coordinates** 301' FSL & 1,588' FWL SEC. 18 T4N, R62W

**Bottom Hole Coordinates** 470' FNL & 1,338' FWL SEC. 7 T4N, R62W

**Ground Elevation** 4,557'

**K.B. Elevation** 4,573'

**Logged Interval** 5,950' To 16,532'

**Total Depth** 16,532'

**Formation** Codell

**Type of Drilling Fluid** Oil Based Mud

## Operator

**Company** Confluence DJ LLC.

**Address** 621 17th St. STE. 1401  
Denver, CO. 80293



## Geologist

**Name** Anne Grau

**Company** Confluence DJ LLC.

**Address** 621 17th St. STE. 1401  
Denver, CO. 80293



Other

Service Type 2 man logging, ASW  
Logger(s) Robert Kelley, Micah Morgan  
Service Equipment ML-577  
LL/Unit Mgr Robert Kelley  
Night Logger Micah Morgan  
Job# 15RK1809  
Start Date 9/14/2018  
Release Date TBD

Zone Color Coding

Oil

Note

Error

Condensate

Core

Water

Gas

Pressure

Seal

Rock Types

UNKNOWN

TILL

BRECCIA

ANHYDRITE

GYP SUM

METAMORPHIC

IGNEOUS

TUFF

BENTONITE

SIDERITE or LIMONITE

CONGLOMERATE

SHALY CONG

GRANITE WASH

SHALY GRANITE WASH

SANDSTONE

SHALY SANDSTONE

LIMY SANDSTONE

SILTSTONE

SHALE

SHALE GRAY

BLACK SHALE

SHALE COLORED

CLAYSTONE

MARLSTONE

CHERT

LIMESTONE

LIMESTONE 2

SANDY LIMESTONE

SANDY LIMESTONE ;

SHALY LIMESTONE

DOLOMITE

COAL

Casing

NO SMP L

NO SAMPLE

Fossils

GASTROPOD

OOLITE

OSTRACOD

PELECYPOD

PELLET

PISOLITE

PLANT REMAINS

PLANT SPORES

SCAPHOPOD

STROMATOPOROID

CRINOID

ECHINOID

FISH

FORAMINIFERA

FOSSIL

ALGAE

AMPHIPORA

BELEMNITE

BIOCLASTIC

BRACHIOPOD

BRYOZOA

CERPHALOPOD

CORAL

CRINOID

ECHINOID

FISH

FORAMINIFERA

FOSSIL

BITUM

BREC

CALC/A

CARB

CHTD

CHTL

COAL

DOLO

FELDS

FERR

GLAU

GYP

HEAVY

ANHYDRITIC

ARGILLACEOUS

ARGILLITE GRAIN

Minerals

Oil Show

ORGANIC

PINPOINT

VUGGY

Engineering

QUESTIONABLE

SPOTTED STAINING

SLIDE

TRIP

CONNECTION KD

FLOW CHECK

DOWN TIME

CONNECTION GAS

DEAD

EVEN

EARTHY

FENESTRAL

FRACTURE

INTERCRYSTALLINE

INTEROOLITIC

MOLDIC

CONNECTION (LEFT)

CONNECTION (RIGHT)

Porosity

CONNECTION KD

FLOW CHECK

DOWN TIME

CONNECTION GAS

CONNECTION (LEFT)

CONNECTION (RIGHT)

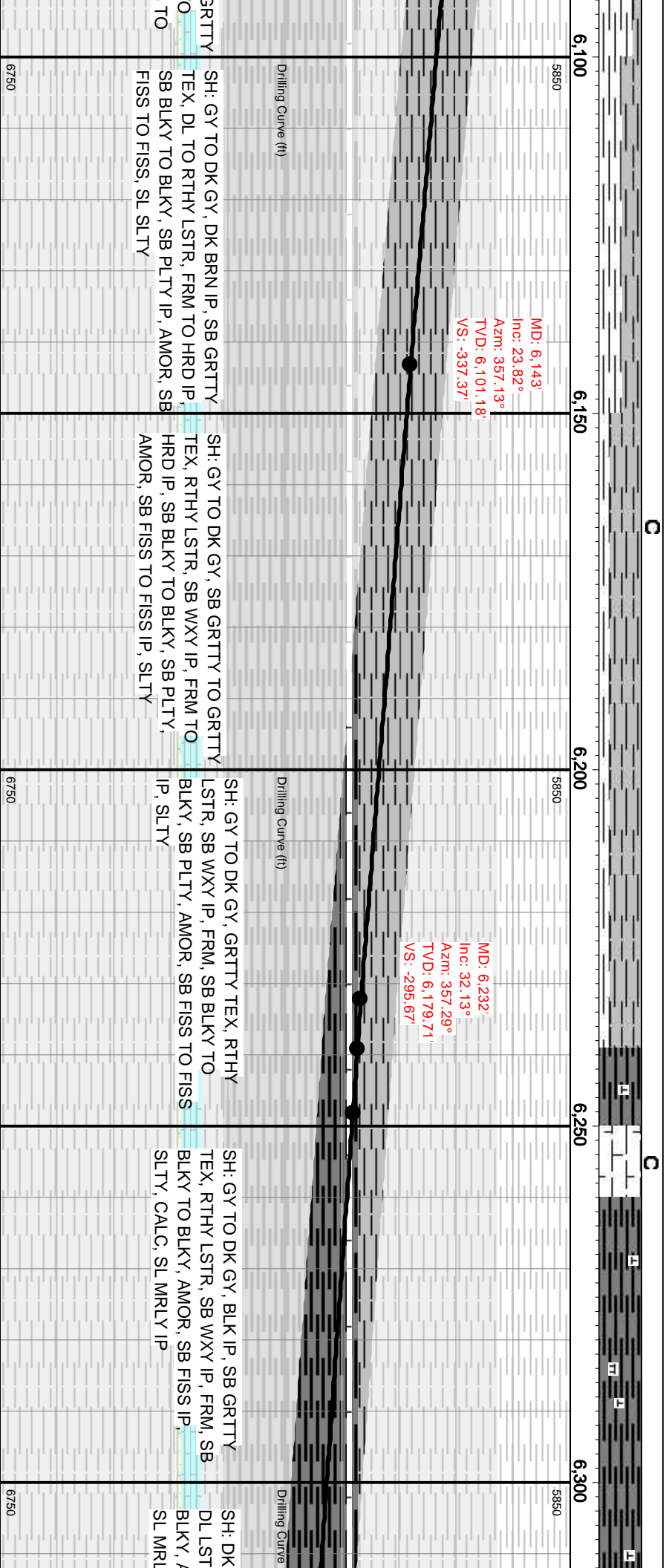
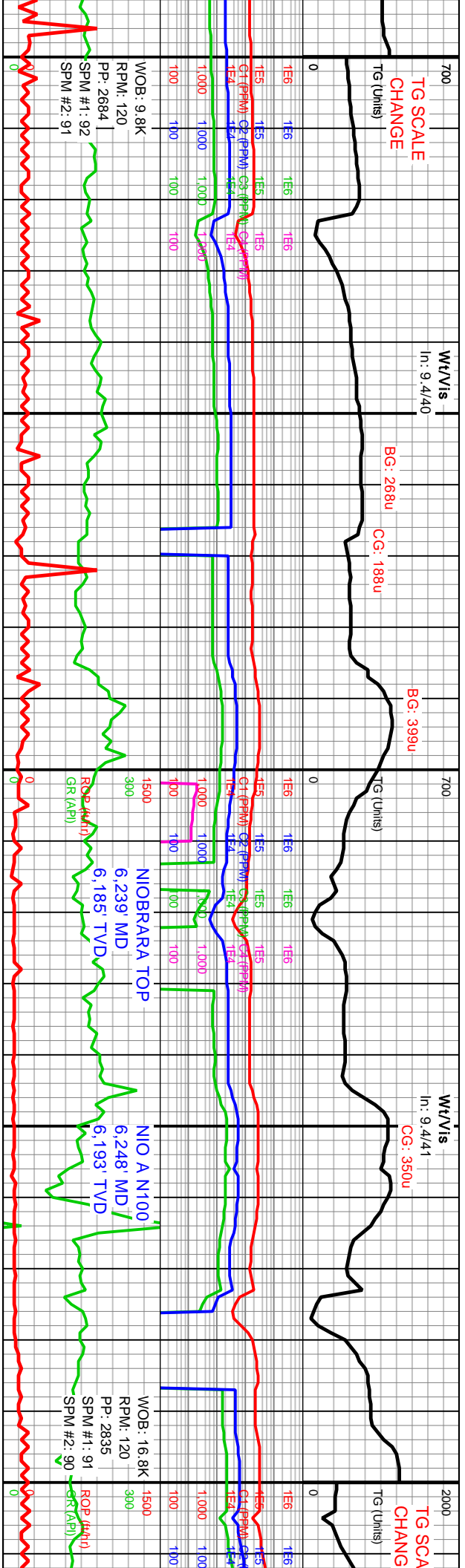
Accessories

ONITE	K KAOLIN	—	COAL STRINGER
IGENOUS SUBSTANCE	⌘ MARLSTONE	—	DOLOMITE STRINGER
ICIA FRAGMENTS	⌘ MINERAL CRYSTALS	—	GYPSUM STRINGER
AREOUS	⌘ NODULES	—	LIMESTONE STRINGER
ONACEOUS FLAKES	⌘ PHOSPHATE PELLETS	—	MARLSTONE (CALC) STRG
ONITE	P PYRITE	—	MARLSTONE (DOL) STRG
- THIN BEDS	⌘ SALT CAST	—	SANDSTONE STRINGER
MITIC	: SANDY	—	SHALE STRINGER
PPAR	Δ SILICEOUS	—	SILTSTONE STRINGER
	.. SILTY	—	WASH
IGINOUS PELLET	✓ TUFFACEOUS	—	SHLY WASH
UGINOUS		—	QTZ WASH
CONITE		—	SILTY SHALE
IFEROUS	Stringer		
MINERAL	ANHYDRITE STRINGER		
	BENTONITE STRINGER		

Other Symbols

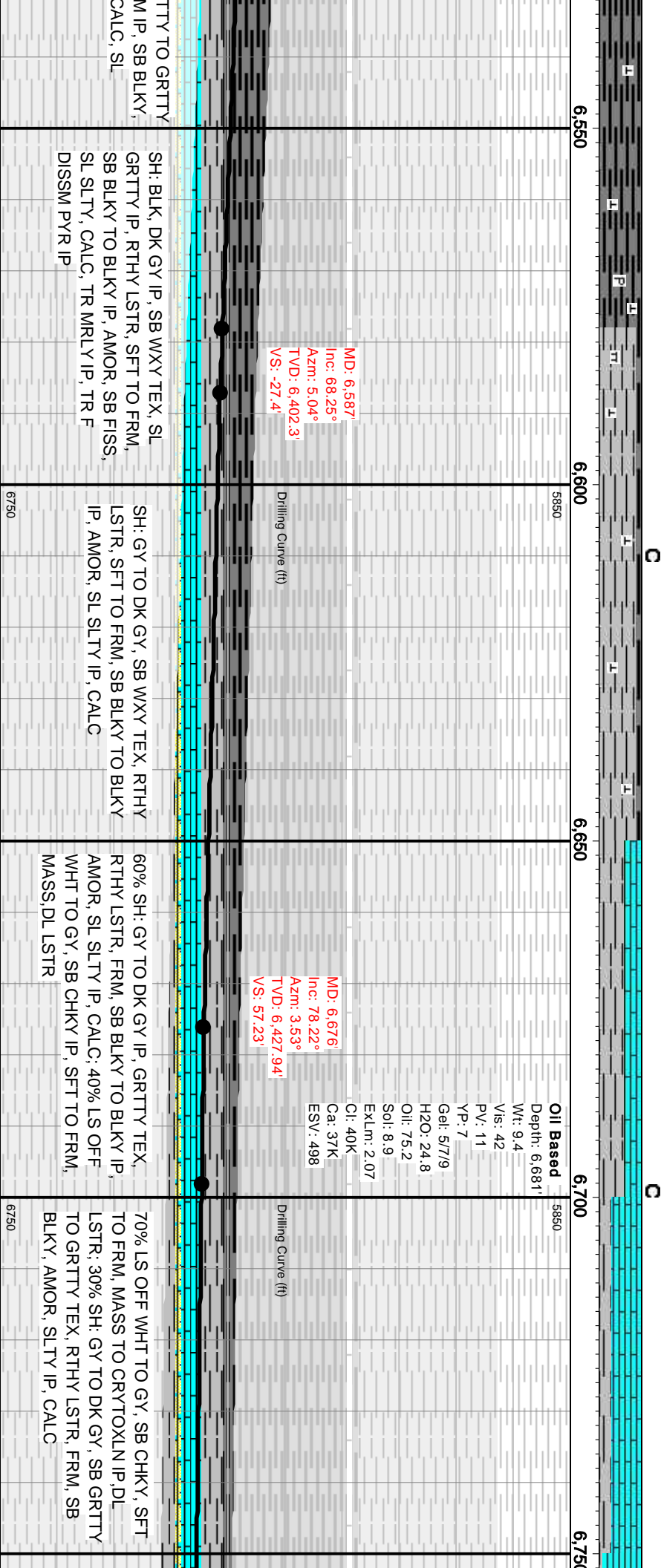
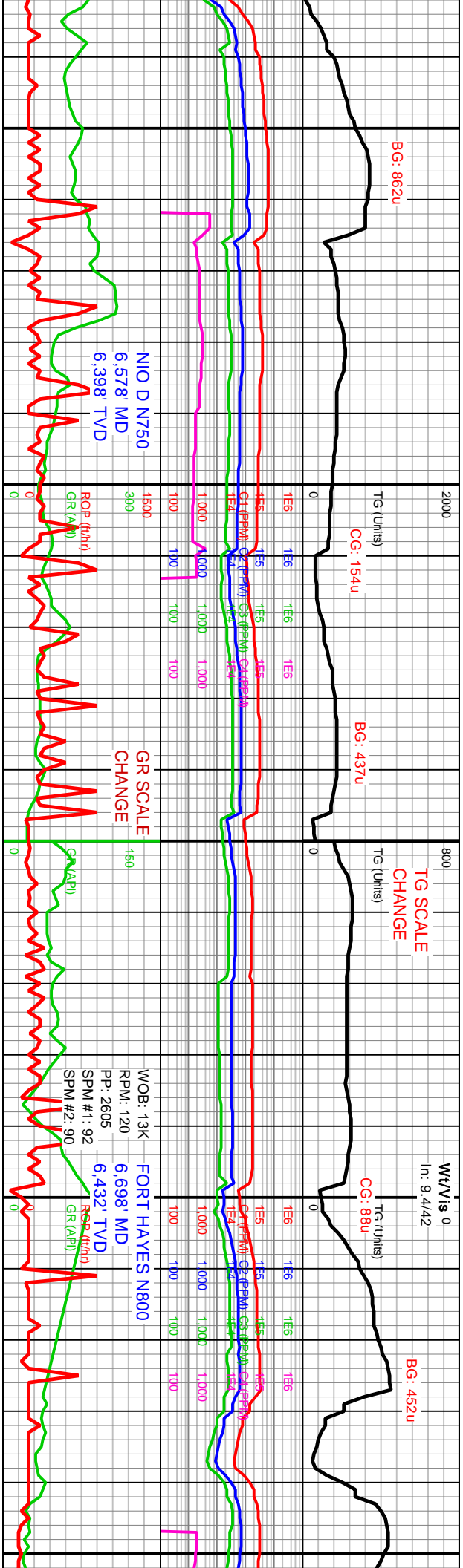
CORE - LOST	SURVEY	E EARTHY
CORE - RECOVERED	WIRELINE TESTED - LEFT	FX FINELYXLN
DST INTERVAL	WIRELINE TESTED - RT	ES GRAINSTONE
FAULT		L LITHOGRAPHIC
FORMATION TOP		MX MICROXLN
GAS SHOW	Δ ANGULAR	MS MUDSTONE
MINDEPTH MN DEPTH	R ROUNDED	PS PACKSTONE
NORMAL FAULT	B SUBANG	WS WACKSTONE
OIL SHOW	P SUBRND	
BIT		
OVERTURNED STRATA	Textures	M MODERATE
REVERSE FAULT	BS BOUNDSTONE	P POOR
SIDEWALL CORE (LEFT)	C CHALKY	W WELL
SIDEWALL CORE (RIGHT)	CS CRYPTOXLN	





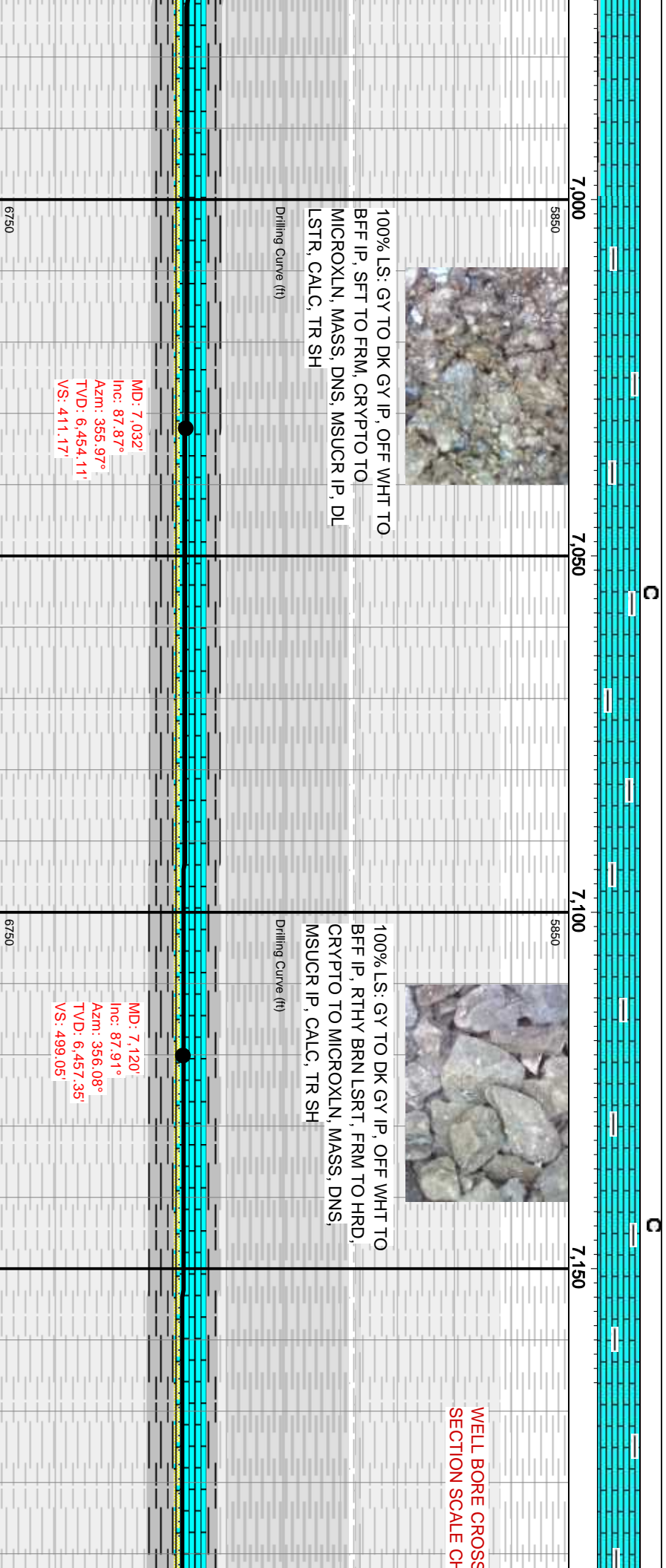
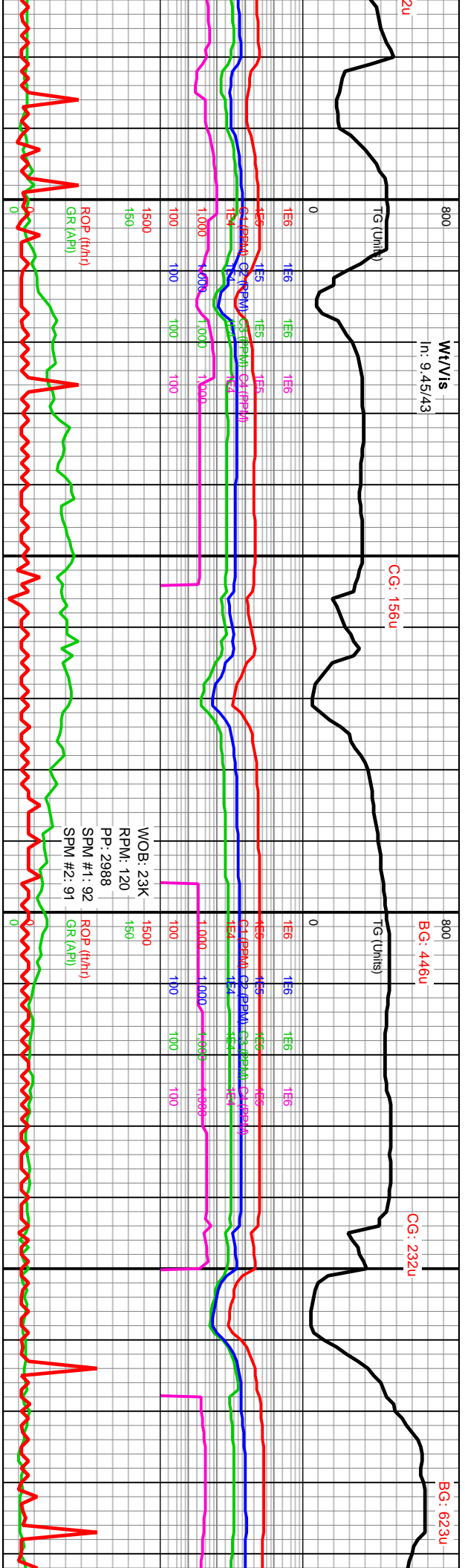






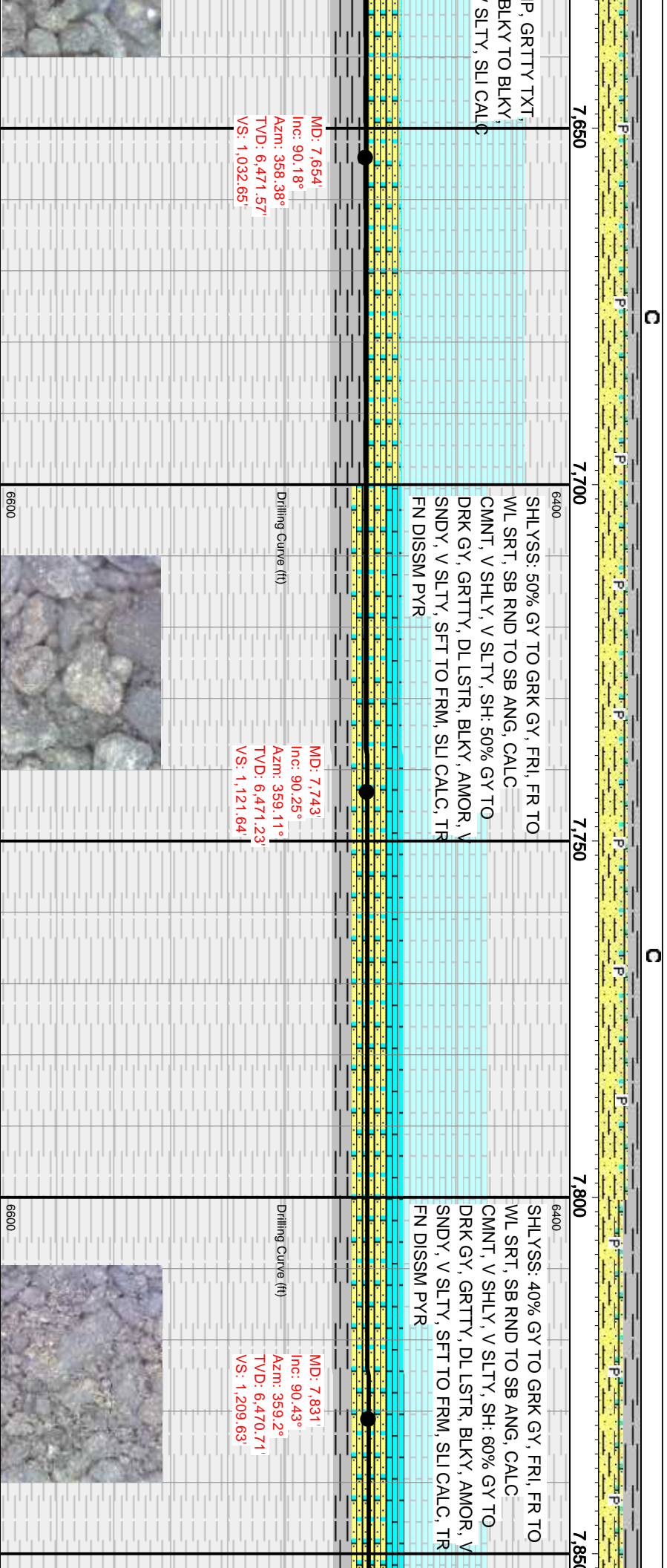
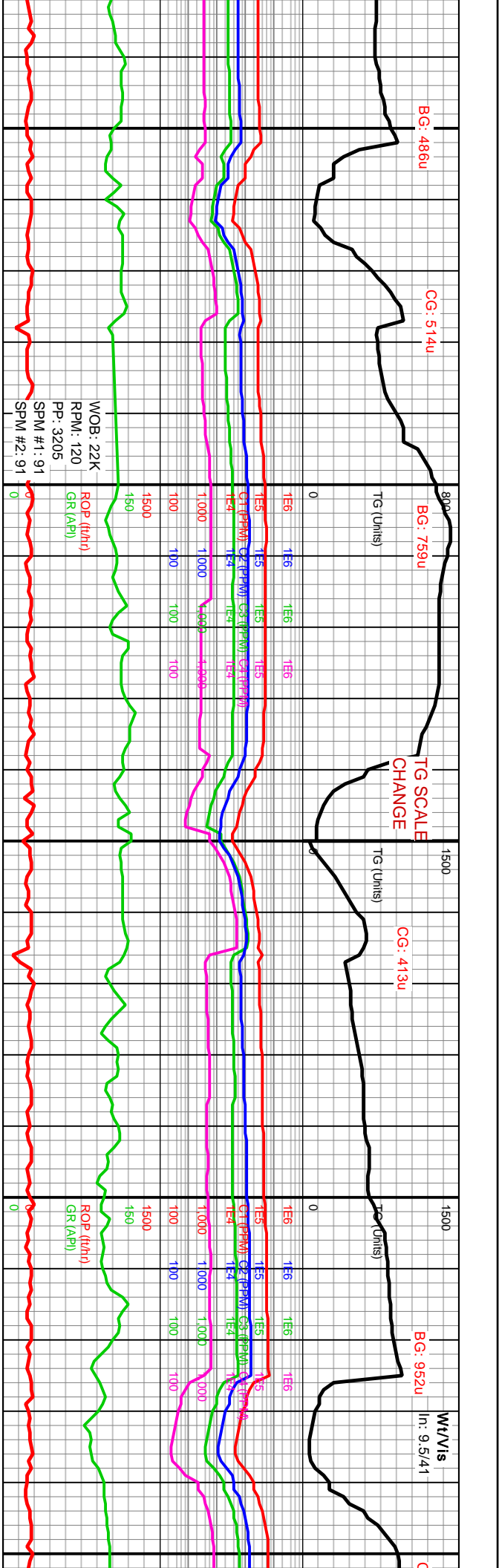












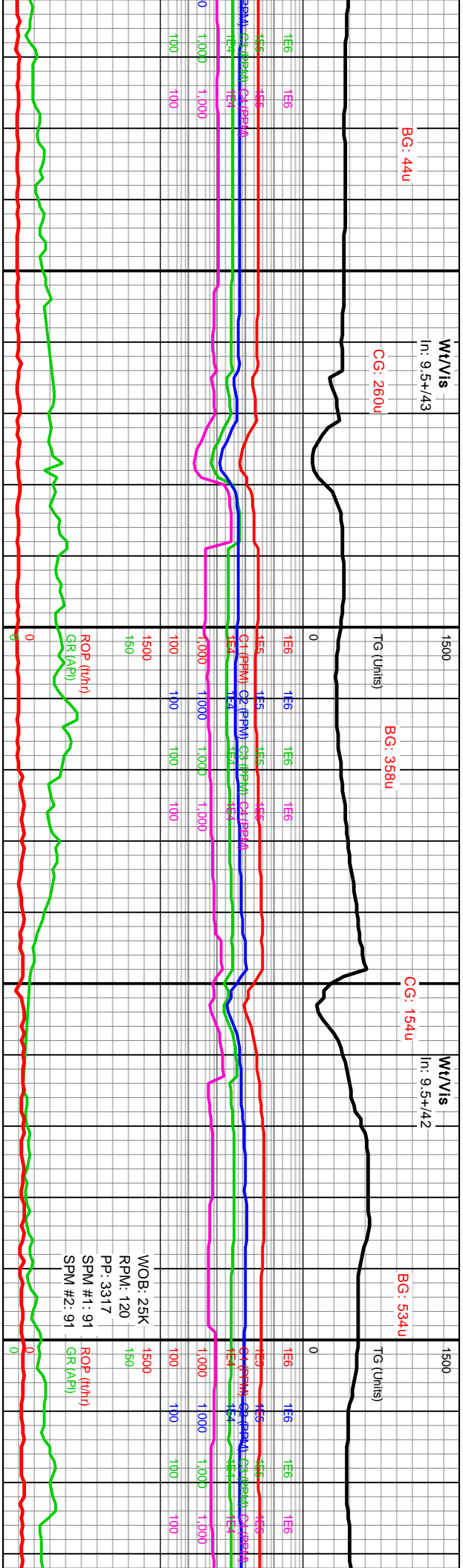




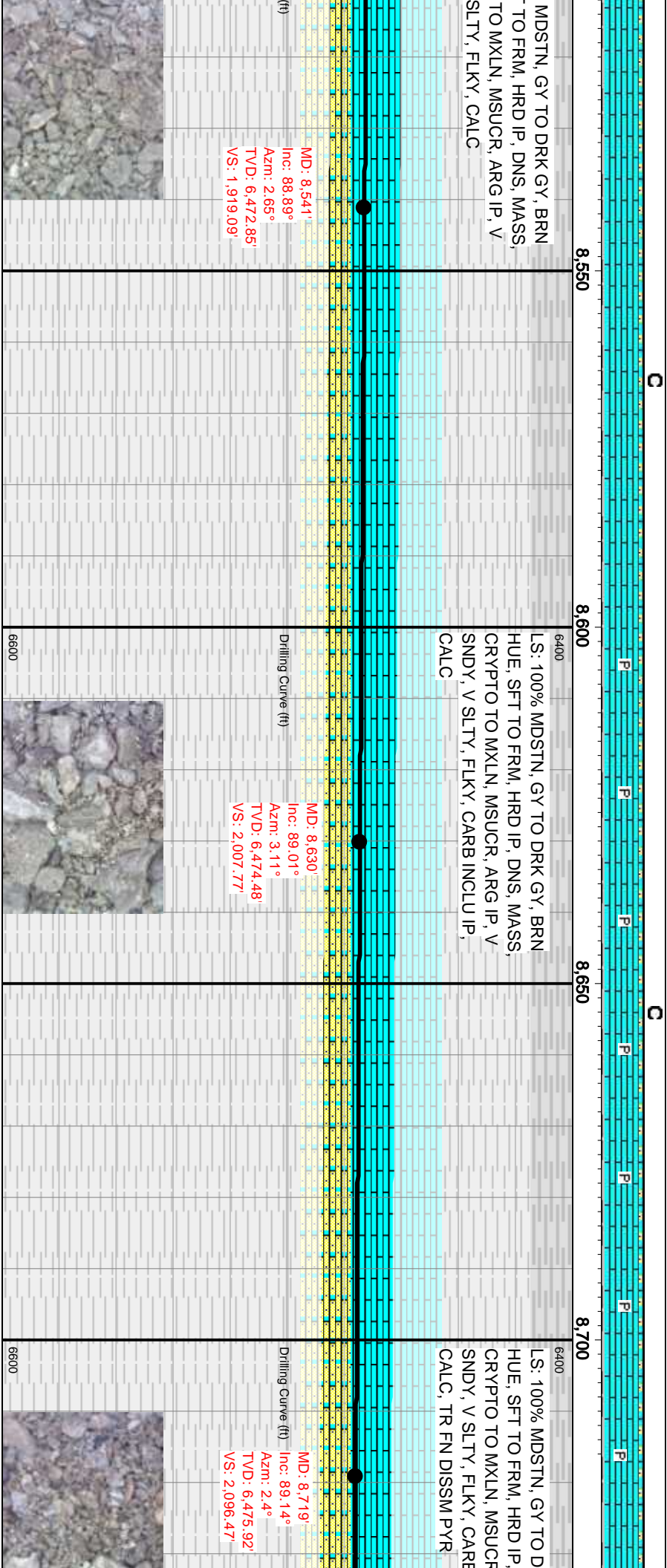








SLTY, FLKY, CALC  
- TO MXLN, MSUCR, ARG IP, V  
- TO FRM, HRD IP, DNS, MASS,  
- MIDSTN, GY TO DRK GY, BRN







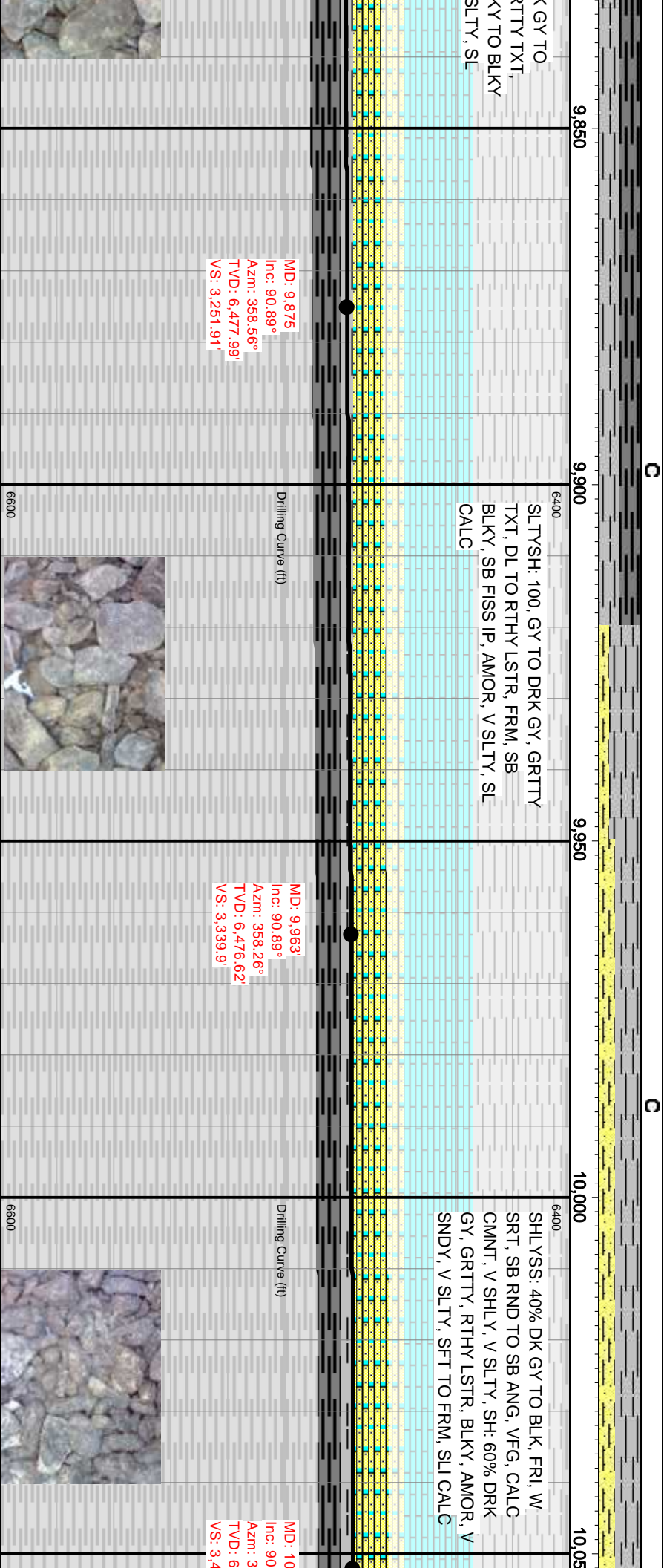
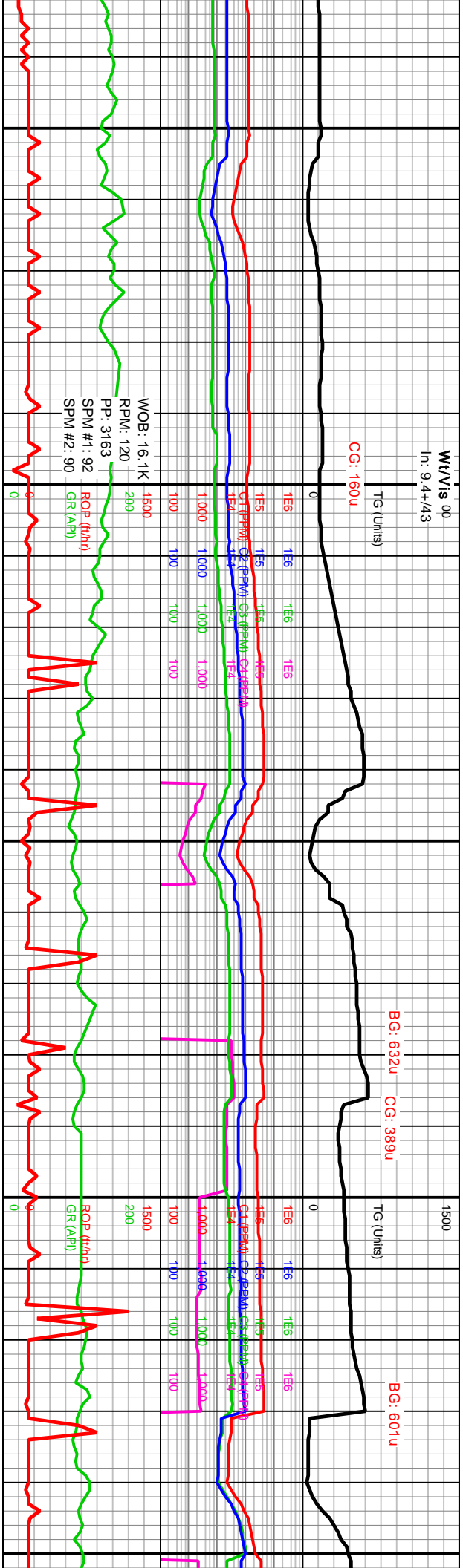






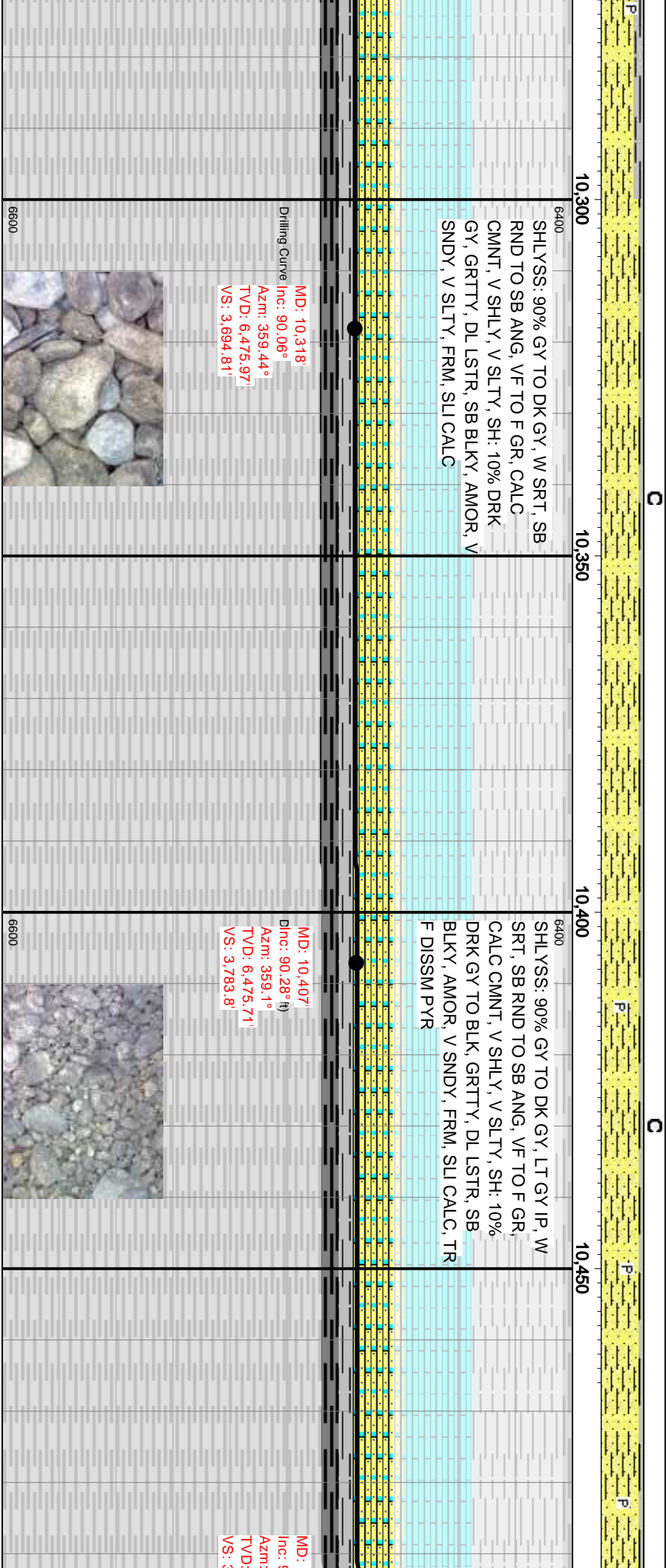
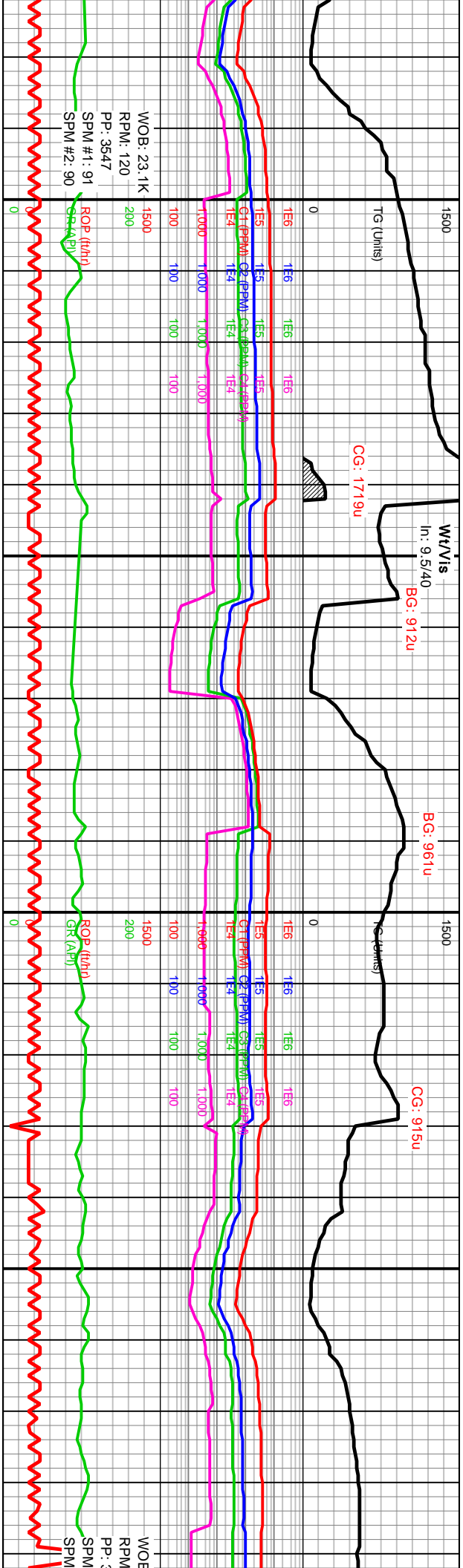




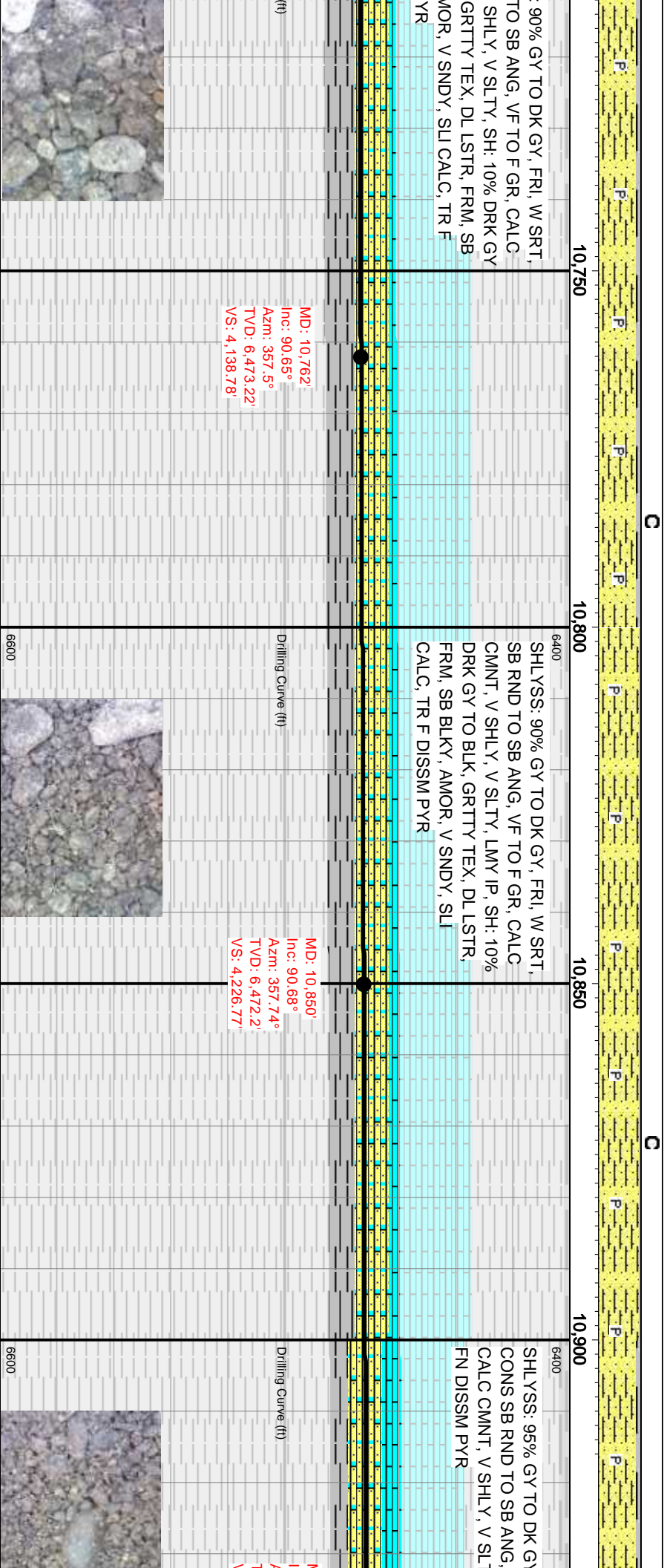
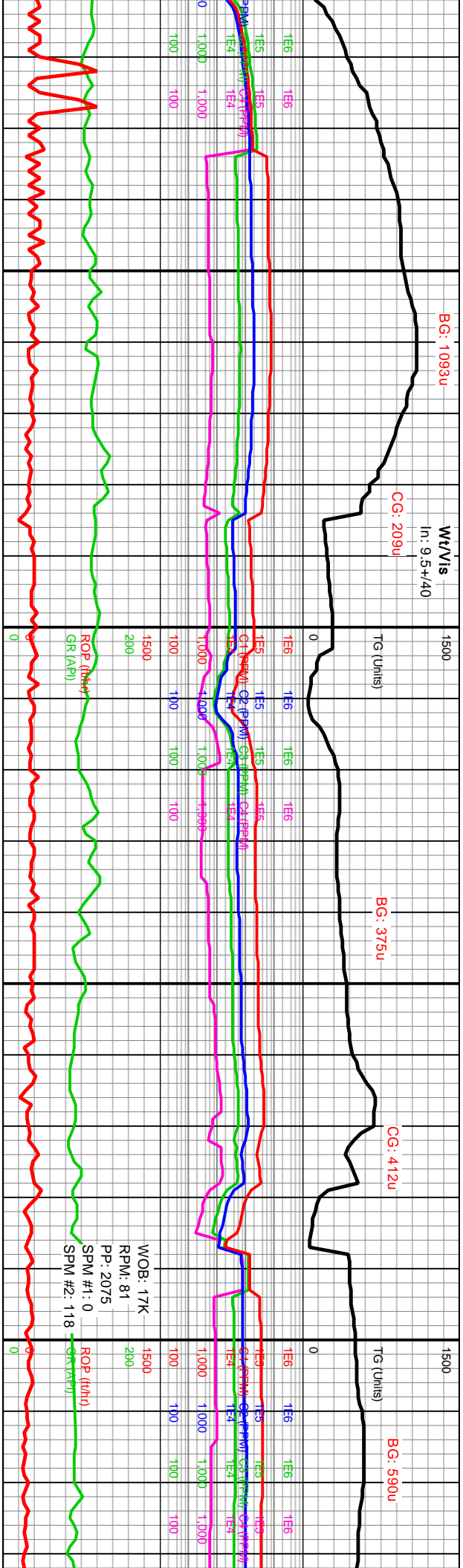








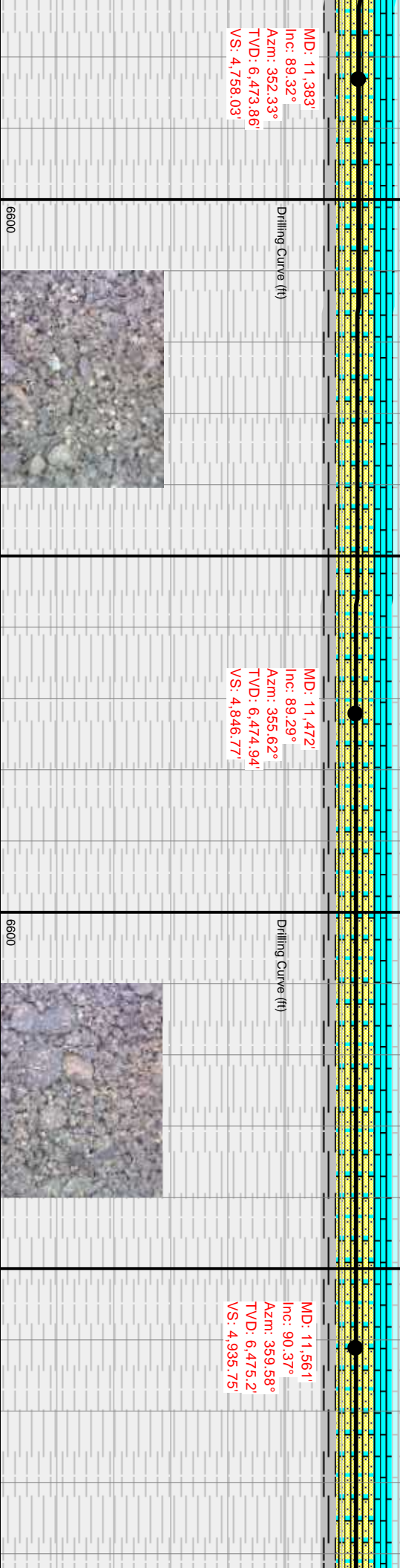
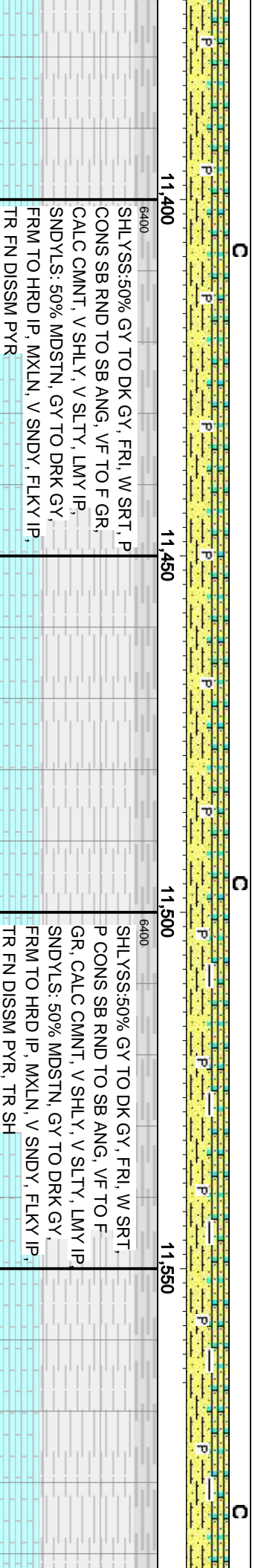
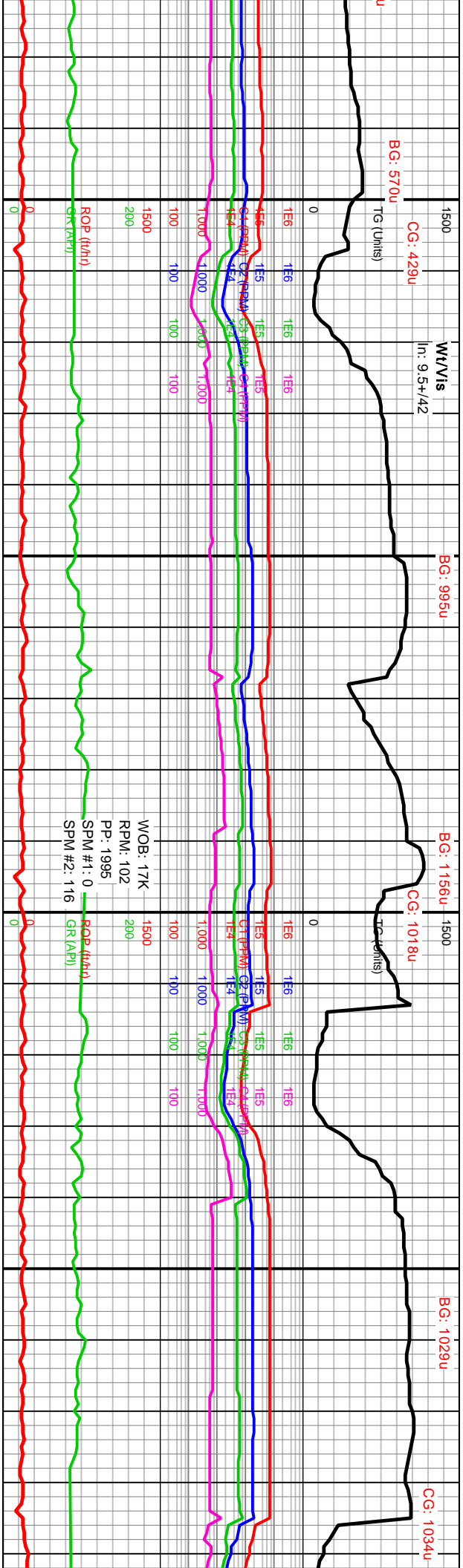








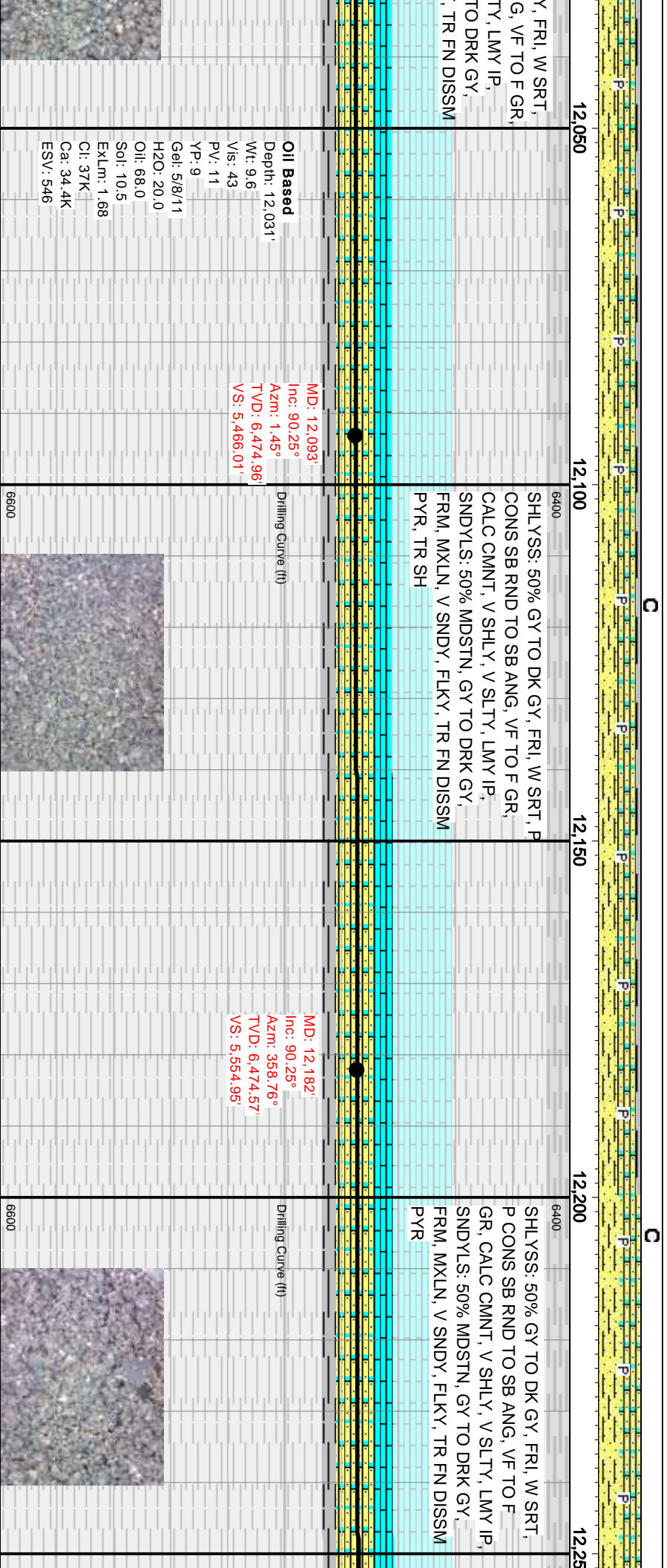
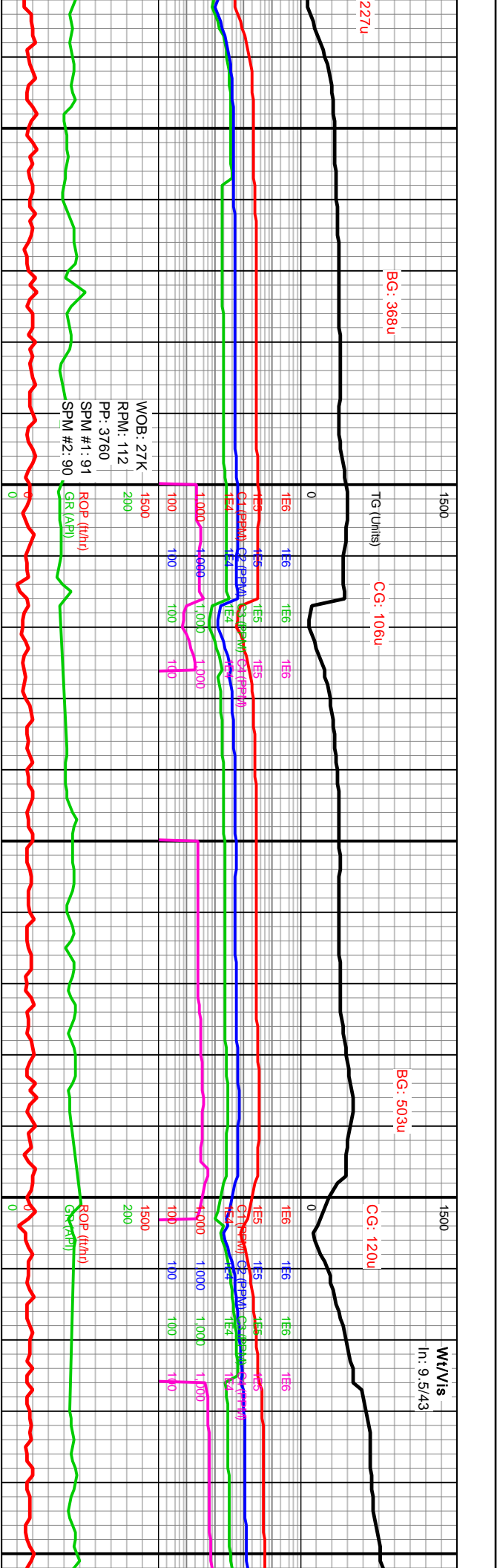




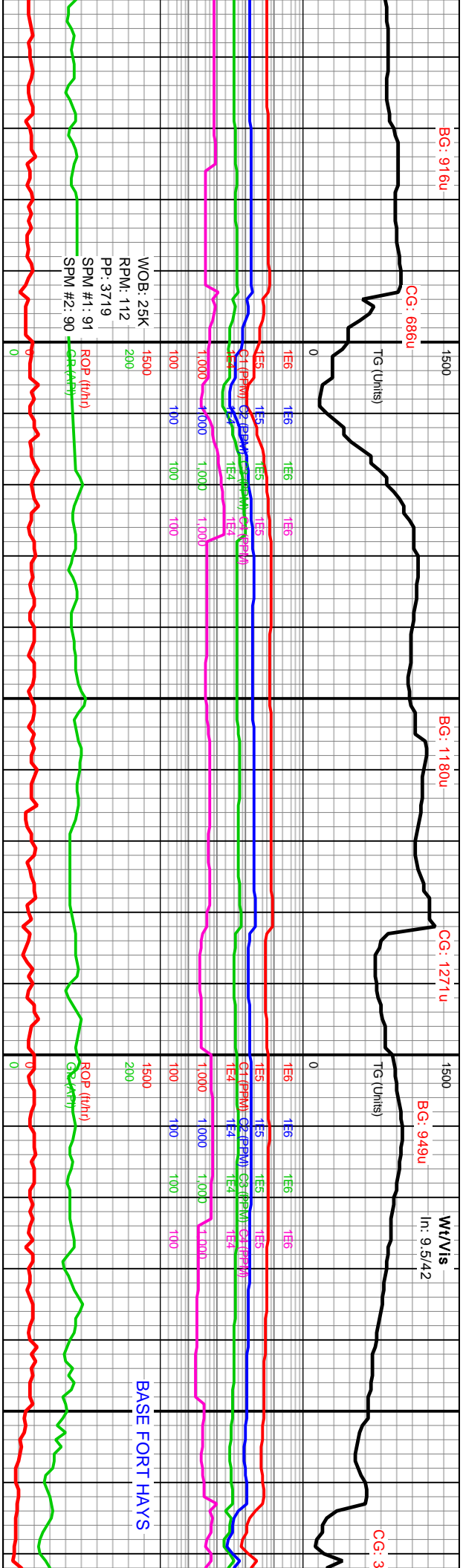












SHLYSS: 50% GY TO DK GY, FRI, W SRT,  
P CONS SB RND TO SB ANG, VF TO F  
GR, CALC CMNT, V SHLY, V SLTY, LMY IP,  
LMYSS: 50% MDSTN, GY TO DRK GY,  
FRM, MXLN, V SNDY, FLKY, TR FN DISSM  
PYR

SHLYSS: 50% GY TO DK GY, FRI, W SRT,  
P CONS SB RND TO SB ANG, VF TO F GR,  
CALC CMNT, V SHLY, V SLTY, LMY IP,  
LMYSS: 50% MDSTN, GY TO DRK GY,  
FRM, MXLN, V SNDY, FLKY, TR FN DISSM  
PYR

MD: 12,270'  
Inc: 90.31°  
Azim: 357.8°  
TVD: 6,474.14'  
VS: 5,642.95'

MD: 12,359'  
Inc: 90.49°  
Azim: 359.73°  
TVD: 6,473.52'  
VS: 5,731.94'

MD: 12,448'  
Inc: 90.18°  
Azim: 1.87°  
TVD: 6,473'  
VS: 5,820.83'



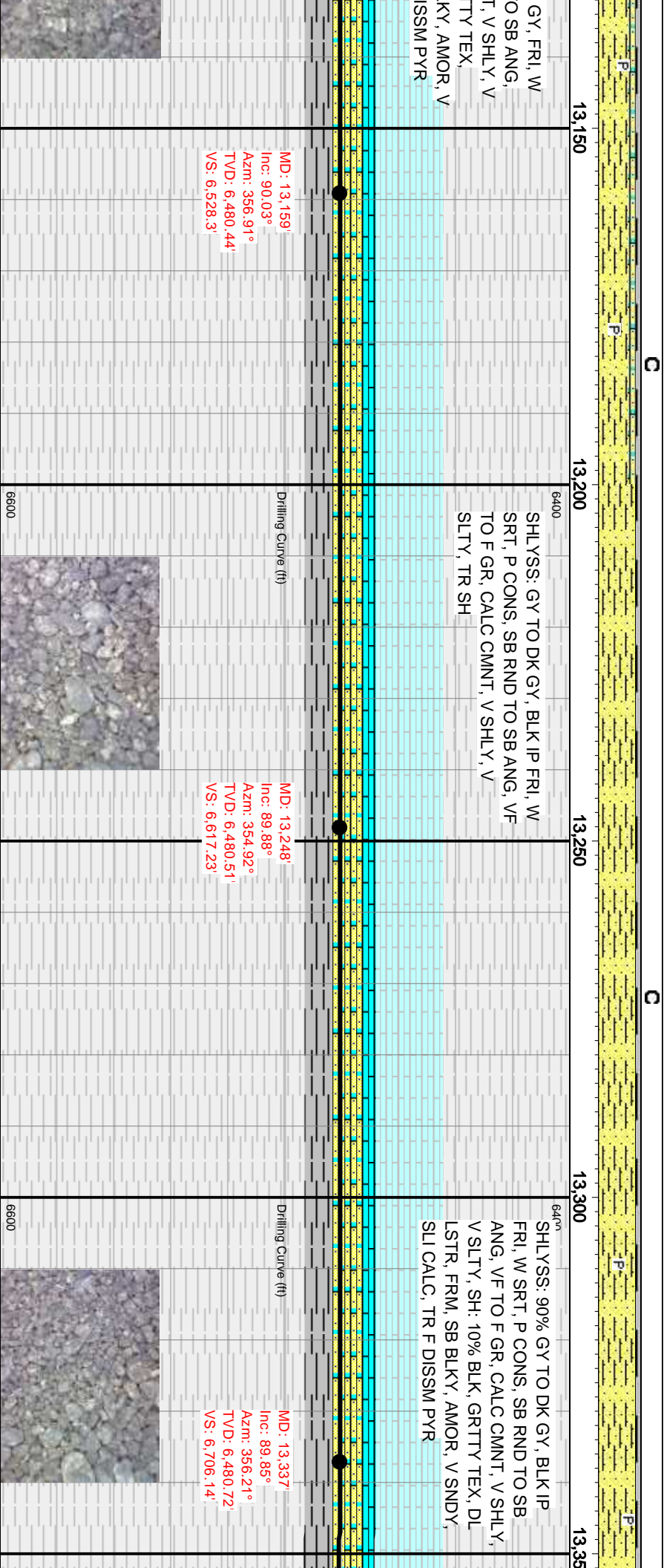
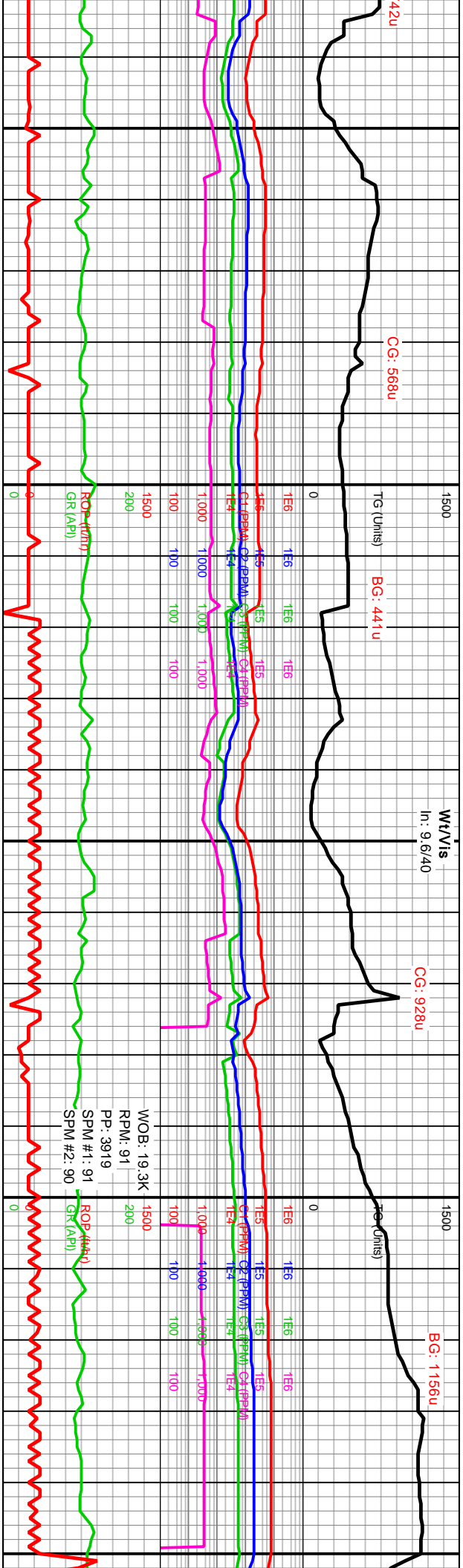












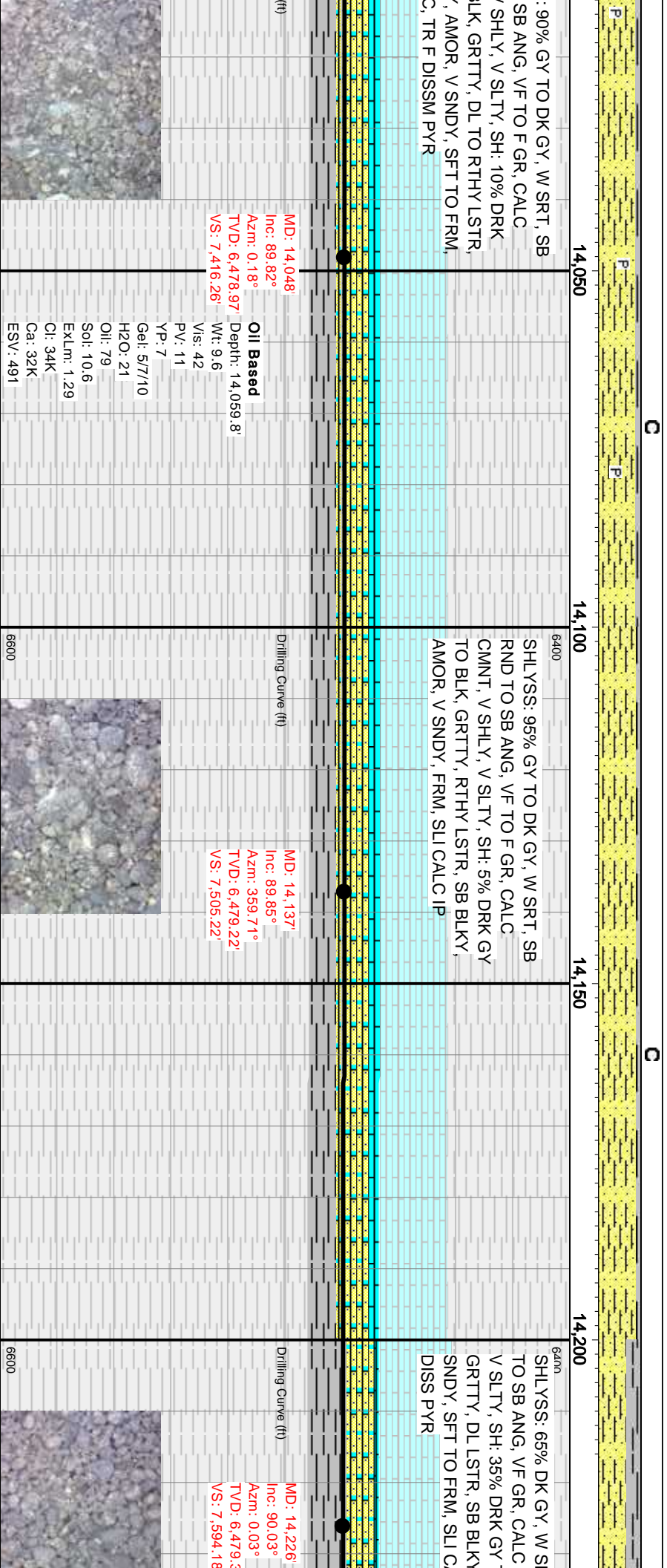
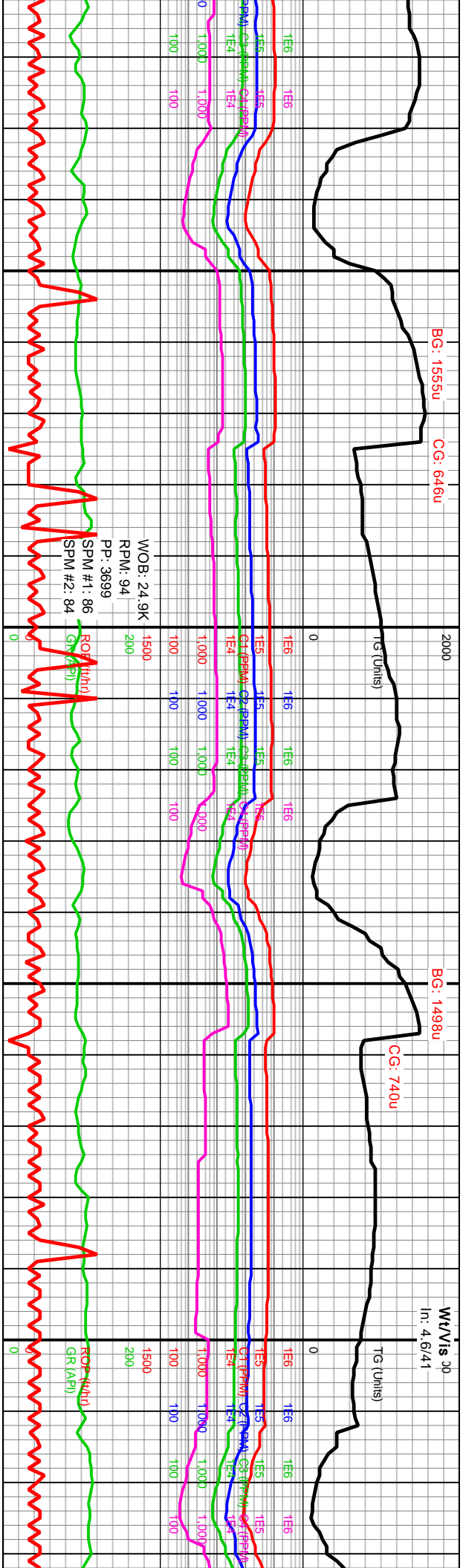














VICE

