



Crestone Peak Resources

Sec 2 T2N-R67W

Echeverria Pad

ECHEVERRIA 2E-2H-D267

Wellbore #1

Plan: Design #1 23apr18 kjs

Standard Planning Report - Geographic

20 November, 2018



Crestone Peak Resources

Well Name:

ECHEVERRIA 2E-2H-D267

Project Name:

Sec 2 T2N-R67W

Pad Name:

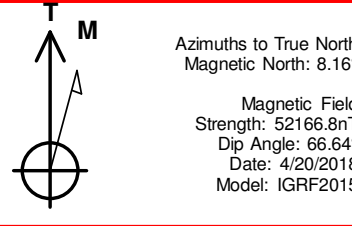
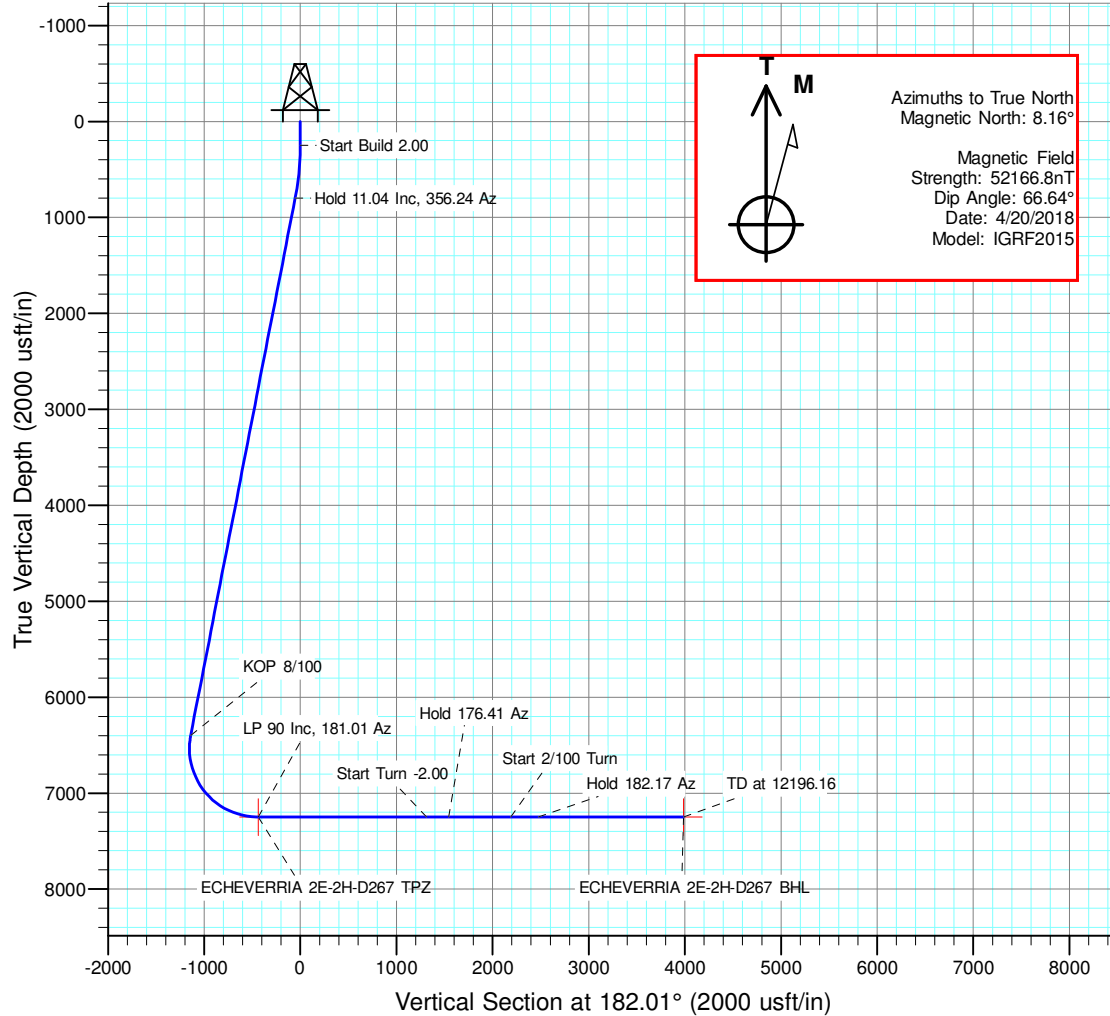
Echeverria Pad

ANNOTATIONS

MD	Inc	Azi	TVD	+N/-S	+E/-W	VSec	Departure	Annotation
250.00	0.00	0.00	250.00	0.00	0.00	0.00	0.00	Start Build 2.00
801.94	11.04	356.24	798.53	52.89	-3.48	-52.74	53.01	Hold 11.04 Inc, 356.24 Az
6506.21	11.04	356.24	6397.26	1142.76	-75.19	-1139.41	1145.23	KOP 8/100
7768.71	90.00	181.01	7250.00	440.07	-101.44	-436.24	1875.88	LP 90 Inc, 181.01 Az
9518.71	90.00	181.01	7250.00	-1309.65	-132.30	1313.49	3625.88	Start Turn -2.00
9748.71	90.00	176.41	7250.00	-1539.53	-127.12	1543.05	3855.88	Hold 176.41 Az
10398.71	90.00	176.41	7250.00	-2188.26	-86.43	2189.94	4505.88	Start 2/100 Turn
10686.71	90.00	182.17	7250.00	-2476.11	-82.86	2477.50	4793.87	Hold 182.17 Az
12196.16	90.00	182.17	7250.00	-3984.49	-140.03	3986.95	6303.33	TD at 12196.16

DESIGN TARGET DETAILS

Name	TVD	+N/-S	+E/-W	Northing	Easting	Latitude	Longitude	Shape
ECHEVERRIA 2E-2H-D267 BHL	7250.00	-3984.49	-140.03	1302164.13	3177383.84	40.16109299	-104.86532900	Point
ECHEVERRIA 2E-2H-D267 TPZ	7250.00	440.07	-101.44	1306588.86	3177390.73	40.17323899	-104.86519100	Point

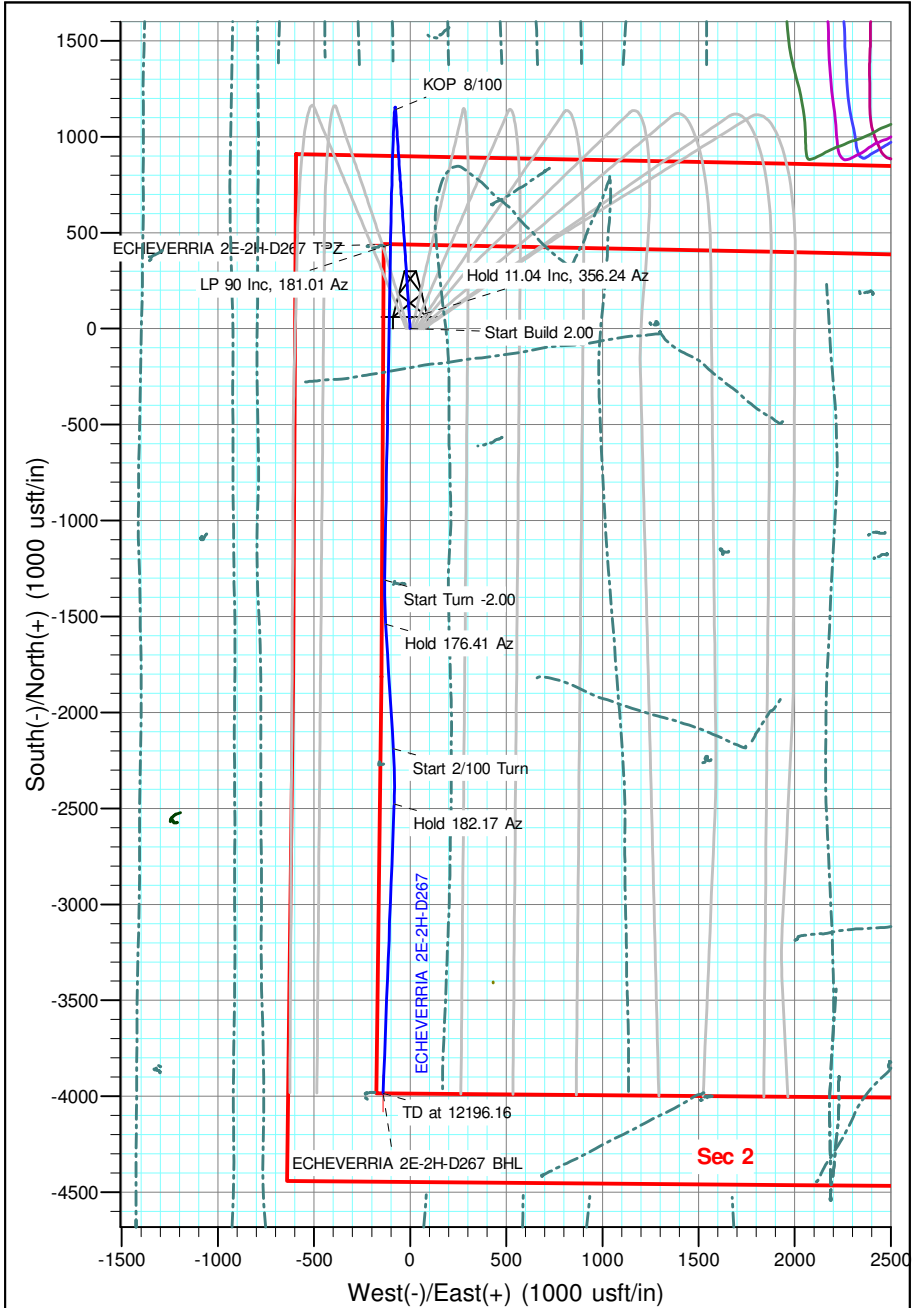


Geodetic Datum:

North American Datum 1983
US State Plane 1983, Colorado Northern Zone

Elevation:

Ground Elevation: 4882.00
KB Elevation: WELL @ 4905.00usft (Original Well Elev)



Database:	EDM 5000.15 Single User Db	Local Co-ordinate Reference:	Well ECHEVERRIA 2E-2H-D267
Company:	Crestone Peak Resources	TVD Reference:	WELL @ 4905.00usft (Original Well Elev)
Project:	Sec 2 T2N-R67W	MD Reference:	WELL @ 4905.00usft (Original Well Elev)
Site:	Echeverria Pad	North Reference:	True
Well:	ECHEVERRIA 2E-2H-D267	Survey Calculation Method:	Minimum Curvature
Wellbore:	Wellbore #1		
Design:	Design #1 23apr18 kjs		

Project	Sec 2 T2N-R67W, Weld County, CO		
Map System:	US State Plane 1983	System Datum:	Mean Sea Level
Geo Datum:	North American Datum 1983		
Map Zone:	Colorado Northern Zone		

Site		Echeverria Pad			
Site Position:		Northing:	1,306,149.765 usft	Latitude:	40.172032
From:	Lat/Long	Easting:	3,177,475.477 usft	Longitude:	-104.864899
Position Uncertainty:	0.00 usft	Slot Radius:	13-3/16 "	Grid Convergence:	0.41 °

Well	ECHEVERRIA 2E-2H-D267					
Well Position	+N/-S	0.00 usft	Northing:	1,306,149.522 usft	Latitude:	40.172031
	+E/-W	0.00 usft	Easting:	3,177,495.320 usft	Longitude:	-104.864828
Position Uncertainty		0.00 usft	Wellhead Elevation:		Ground Level:	4,882.00 usft

Wellbore	Wellbore #1				
Magnetics	Model Name	Sample Date	Declination (°)	Dip Angle (°)	Field Strength (nT)
	IGRF2015	4/20/2018	8.16	66.64	52,166.80692996

Design	Design #1 23apr18 kjs			
Audit Notes:				
Version:	Phase:	PLAN	Tie On Depth:	0.00
Vertical Section:	Depth From (TVD) (usft)	+N/-S (usft)	+E/-W (usft)	Direction (°)
	0.00	0.00	0.00	182.01

Plan Survey Tool Program	Date	5/14/2018		
Depth From (usft)	Depth To (usft)	Survey (Wellbore)	Tool Name	Remarks
1	0.00	12,196.16 Design #1 23apr18 kjs (Wellbore)	MWD	
			OWSG MWD - Standard	

Database:	EDM 5000.15 Single User Db	Local Co-ordinate Reference:	Well ECHEVERRIA 2E-2H-D267
Company:	Crestone Peak Resources	TVD Reference:	WELL @ 4905.00usft (Original Well Elev)
Project:	Sec 2 T2N-R67W	MD Reference:	WELL @ 4905.00usft (Original Well Elev)
Site:	Echeverria Pad	North Reference:	True
Well:	ECHEVERRIA 2E-2H-D267	Survey Calculation Method:	Minimum Curvature
Wellbore:	Wellbore #1		
Design:	Design #1 23apr18 kjs		

Plan Sections										
Measured Depth (usft)	Inclination (°)	Azimuth (°)	Vertical Depth (usft)	+N/-S (usft)	+E/-W (usft)	Dogleg Rate (°/100usft)	Build Rate (°/100usft)	Turn Rate (°/100usft)	TFO (°)	Target
0.00	0.00	0.00	0.00	0.00	0.00	0.00	0.00	0.00	0.00	
250.00	0.00	0.00	250.00	0.00	0.00	0.00	0.00	0.00	0.00	
801.94	11.04	356.24	798.54	52.89	-3.48	2.00	2.00	0.00	356.24	
6,506.21	11.04	356.24	6,397.26	1,142.76	-75.19	0.00	0.00	0.00	0.00	
7,768.71	90.00	181.01	7,250.00	440.07	-101.44	8.00	6.25	-13.88	-175.14	ECHEVERRIA 2E-2H
9,518.71	90.00	181.01	7,250.00	-1,309.65	-132.30	0.00	0.00	0.00	0.00	
9,748.71	90.00	176.41	7,250.00	-1,539.53	-127.12	2.00	0.00	-2.00	-90.00	
10,398.71	90.00	176.41	7,250.00	-2,188.26	-86.43	0.00	0.00	0.00	0.00	
10,686.71	90.00	182.17	7,250.00	-2,476.11	-82.86	2.00	0.00	2.00	90.00	
12,196.16	90.00	182.17	7,250.00	-3,984.49	-140.03	0.00	0.00	0.00	0.00	ECHEVERRIA 2E-2H

Database:	EDM 5000.15 Single User Db	Local Co-ordinate Reference:	Well ECHEVERRIA 2E-2H-D267
Company:	Crestone Peak Resources	TVD Reference:	WELL @ 4905.00usft (Original Well Elev)
Project:	Sec 2 T2N-R67W	MD Reference:	WELL @ 4905.00usft (Original Well Elev)
Site:	Echeverria Pad	North Reference:	True
Well:	ECHEVERRIA 2E-2H-D267	Survey Calculation Method:	Minimum Curvature
Wellbore:	Wellbore #1		
Design:	Design #1 23apr18 kjs		

Planned Survey									
Measured Depth (usft)	Inclination (°)	Azimuth (°)	Vertical Depth (usft)	+N/-S (usft)	+E/-W (usft)	Map Northing (usft)	Map Easting (usft)	Latitude	Longitude
0.00	0.00	0.00	0.00	0.00	0.00	1,306,149.522	3,177,495.320	40.172031	-104.864828
100.00	0.00	0.00	100.00	0.00	0.00	1,306,149.522	3,177,495.320	40.172031	-104.864828
200.00	0.00	0.00	200.00	0.00	0.00	1,306,149.522	3,177,495.320	40.172031	-104.864828
250.00	0.00	0.00	250.00	0.00	0.00	1,306,149.522	3,177,495.320	40.172031	-104.864828
Start Build 2.00									
300.00	1.00	356.24	300.00	0.44	-0.03	1,306,149.958	3,177,495.288	40.172032	-104.864828
400.00	3.00	356.24	399.93	3.92	-0.26	1,306,153.438	3,177,495.034	40.172042	-104.864829
500.00	5.00	356.24	499.68	10.88	-0.72	1,306,160.395	3,177,494.526	40.172061	-104.864831
600.00	7.00	356.24	599.13	21.31	-1.40	1,306,170.820	3,177,493.765	40.172090	-104.864833
700.00	9.00	356.24	698.15	35.19	-2.32	1,306,184.699	3,177,492.752	40.172128	-104.864837
800.00	11.00	356.24	796.63	52.52	-3.46	1,306,202.017	3,177,491.488	40.172175	-104.864841
801.94	11.04	356.24	798.53	52.89	-3.48	1,306,202.387	3,177,491.461	40.172176	-104.864841
Hold 11.04 Inc, 356.24 Az									
900.00	11.04	356.24	894.78	71.63	-4.71	1,306,221.113	3,177,490.094	40.172228	-104.864845
1,000.00	11.04	356.24	992.93	90.73	-5.97	1,306,240.210	3,177,488.700	40.172280	-104.864850
1,100.00	11.04	356.24	1,091.08	109.84	-7.23	1,306,259.306	3,177,487.306	40.172333	-104.864854
1,200.00	11.04	356.24	1,189.23	128.94	-8.48	1,306,278.403	3,177,485.912	40.172385	-104.864859
1,300.00	11.04	356.24	1,287.38	148.05	-9.74	1,306,297.500	3,177,484.518	40.172437	-104.864863
1,400.00	11.04	356.24	1,385.53	167.16	-11.00	1,306,316.596	3,177,483.124	40.172490	-104.864868
1,500.00	11.04	356.24	1,483.68	186.26	-12.26	1,306,335.693	3,177,481.730	40.172542	-104.864872
1,600.00	11.04	356.24	1,581.83	205.37	-13.51	1,306,354.790	3,177,480.336	40.172595	-104.864877
1,700.00	11.04	356.24	1,679.98	224.48	-14.77	1,306,373.886	3,177,478.942	40.172647	-104.864881
1,800.00	11.04	356.24	1,778.13	243.58	-16.03	1,306,392.983	3,177,477.548	40.172700	-104.864886
1,900.00	11.04	356.24	1,876.27	262.69	-17.28	1,306,412.080	3,177,476.154	40.172752	-104.864890
2,000.00	11.04	356.24	1,974.42	281.79	-18.54	1,306,431.176	3,177,474.760	40.172805	-104.864895
2,100.00	11.04	356.24	2,072.57	300.90	-19.80	1,306,450.273	3,177,473.366	40.172857	-104.864899
2,200.00	11.04	356.24	2,170.72	320.01	-21.06	1,306,469.370	3,177,471.972	40.172909	-104.864904
2,300.00	11.04	356.24	2,268.87	339.11	-22.31	1,306,488.467	3,177,470.578	40.172962	-104.864908
2,400.00	11.04	356.24	2,367.02	358.22	-23.57	1,306,507.563	3,177,469.184	40.173014	-104.864913
2,500.00	11.04	356.24	2,465.17	377.32	-24.83	1,306,526.660	3,177,467.789	40.173067	-104.864917
2,600.00	11.04	356.24	2,563.32	396.43	-26.09	1,306,545.757	3,177,466.395	40.173119	-104.864922
2,700.00	11.04	356.24	2,661.47	415.54	-27.34	1,306,564.853	3,177,465.001	40.173172	-104.864926
2,800.00	11.04	356.24	2,759.62	434.64	-28.60	1,306,583.950	3,177,463.607	40.173224	-104.864931
2,900.00	11.04	356.24	2,857.77	453.75	-29.86	1,306,603.047	3,177,462.213	40.173277	-104.864935
3,000.00	11.04	356.24	2,955.92	472.86	-31.11	1,306,622.143	3,177,460.819	40.173329	-104.864940
3,100.00	11.04	356.24	3,054.07	491.96	-32.37	1,306,641.240	3,177,459.425	40.173382	-104.864944
3,200.00	11.04	356.24	3,152.22	511.07	-33.63	1,306,660.337	3,177,458.031	40.173434	-104.864949
3,300.00	11.04	356.24	3,250.37	530.17	-34.89	1,306,679.433	3,177,456.637	40.173486	-104.864953
3,400.00	11.04	356.24	3,348.52	549.28	-36.14	1,306,698.530	3,177,455.243	40.173539	-104.864958
3,500.00	11.04	356.24	3,446.67	568.39	-37.40	1,306,717.627	3,177,453.849	40.173591	-104.864962
3,600.00	11.04	356.24	3,544.82	587.49	-38.66	1,306,736.723	3,177,452.455	40.173644	-104.864967
3,700.00	11.04	356.24	3,642.97	606.60	-39.91	1,306,755.820	3,177,451.061	40.173696	-104.864971
3,800.00	11.04	356.24	3,741.12	625.71	-41.17	1,306,774.917	3,177,449.667	40.173749	-104.864976
3,900.00	11.04	356.24	3,839.27	644.81	-42.43	1,306,794.013	3,177,448.273	40.173801	-104.864980
4,000.00	11.04	356.24	3,937.42	663.92	-43.69	1,306,813.110	3,177,446.879	40.173854	-104.864985
4,100.00	11.04	356.24	4,035.57	683.02	-44.94	1,306,832.207	3,177,445.485	40.173906	-104.864989
4,200.00	11.04	356.24	4,133.72	702.13	-46.20	1,306,851.303	3,177,444.091	40.173958	-104.864994
4,300.00	11.04	356.24	4,231.87	721.24	-47.46	1,306,870.400	3,177,442.697	40.174011	-104.864998
4,400.00	11.04	356.24	4,330.02	740.34	-48.71	1,306,889.497	3,177,441.303	40.174063	-104.865003
4,500.00	11.04	356.24	4,428.17	759.45	-49.97	1,306,908.593	3,177,439.909	40.174116	-104.865007
4,600.00	11.04	356.24	4,526.32	778.55	-51.23	1,306,927.690	3,177,438.515	40.174168	-104.865012
4,700.00	11.04	356.24	4,624.47	797.66	-52.49	1,306,946.787	3,177,437.121	40.174221	-104.865016
4,800.00	11.04	356.24	4,722.62	816.77	-53.74	1,306,965.883	3,177,435.727	40.174273	-104.865021
4,900.00	11.04	356.24	4,820.77	835.87	-55.00	1,306,984.980	3,177,434.333	40.174326	-104.865025

Database:	EDM 5000.15 Single User Db	Local Co-ordinate Reference:	Well ECHEVERRIA 2E-2H-D267
Company:	Crestone Peak Resources	TVD Reference:	WELL @ 4905.00usft (Original Well Elev)
Project:	Sec 2 T2N-R67W	MD Reference:	WELL @ 4905.00usft (Original Well Elev)
Site:	Echeverria Pad	North Reference:	True
Well:	ECHEVERRIA 2E-2H-D267	Survey Calculation Method:	Minimum Curvature
Wellbore:	Wellbore #1		
Design:	Design #1 23apr18 kjs		

Planned Survey									
Measured Depth (usft)	Inclination (°)	Azimuth (°)	Vertical Depth (usft)	+N/-S (usft)	+E/-W (usft)	Map Northing (usft)	Map Easting (usft)	Latitude	Longitude
5,000.00	11.04	356.24	4,918.92	854.98	-56.26	1,307,004.077	3,177,432.939	40.174378	-104.865030
5,100.00	11.04	356.24	5,017.07	874.09	-57.52	1,307,023.173	3,177,431.545	40.174431	-104.865034
5,200.00	11.04	356.24	5,115.22	893.19	-58.77	1,307,042.270	3,177,430.151	40.174483	-104.865039
5,300.00	11.04	356.24	5,213.37	912.30	-60.03	1,307,061.367	3,177,428.757	40.174535	-104.865043
5,400.00	11.04	356.24	5,311.52	931.40	-61.29	1,307,080.463	3,177,427.363	40.174588	-104.865048
5,500.00	11.04	356.24	5,409.67	950.51	-62.54	1,307,099.560	3,177,425.969	40.174640	-104.865052
5,600.00	11.04	356.24	5,507.82	969.62	-63.80	1,307,118.657	3,177,424.575	40.174693	-104.865057
5,700.00	11.04	356.24	5,605.97	988.72	-65.06	1,307,137.753	3,177,423.181	40.174745	-104.865061
5,800.00	11.04	356.24	5,704.12	1,007.83	-66.32	1,307,156.850	3,177,421.787	40.174798	-104.865066
5,900.00	11.04	356.24	5,802.27	1,026.93	-67.57	1,307,175.947	3,177,420.393	40.174850	-104.865070
6,000.00	11.04	356.24	5,900.41	1,046.04	-68.83	1,307,195.043	3,177,418.999	40.174903	-104.865075
6,100.00	11.04	356.24	5,998.56	1,065.15	-70.09	1,307,214.140	3,177,417.605	40.174955	-104.865079
6,200.00	11.04	356.24	6,096.71	1,084.25	-71.34	1,307,233.237	3,177,416.211	40.175007	-104.865084
6,300.00	11.04	356.24	6,194.86	1,103.36	-72.60	1,307,252.333	3,177,414.817	40.175060	-104.865088
6,400.00	11.04	356.24	6,293.01	1,122.47	-73.86	1,307,271.430	3,177,413.423	40.175112	-104.865093
6,500.00	11.04	356.24	6,391.16	1,141.57	-75.12	1,307,290.527	3,177,412.029	40.175165	-104.865097
6,506.21	11.04	356.24	6,397.26	1,142.76	-75.19	1,307,291.712	3,177,411.942	40.175168	-104.865097
KOP 8/100									
6,600.00	3.62	346.13	6,490.22	1,154.61	-76.49	1,307,303.553	3,177,410.556	40.175201	-104.865102
6,700.00	4.60	192.66	6,590.12	1,153.76	-78.13	1,307,302.693	3,177,408.925	40.175198	-104.865108
6,800.00	12.54	185.20	6,688.93	1,139.02	-80.00	1,307,287.936	3,177,407.166	40.175158	-104.865115
6,900.00	20.52	183.50	6,784.72	1,110.66	-82.05	1,307,259.570	3,177,405.313	40.175080	-104.865122
7,000.00	28.52	182.72	6,875.63	1,069.26	-84.26	1,307,218.147	3,177,403.403	40.174966	-104.865130
7,100.00	36.51	182.27	6,959.88	1,015.60	-86.57	1,307,164.473	3,177,401.472	40.174819	-104.865138
7,200.00	44.51	181.96	7,035.85	950.73	-88.95	1,307,099.593	3,177,399.559	40.174641	-104.865147
7,300.00	52.51	181.72	7,102.04	875.92	-91.35	1,307,024.770	3,177,397.701	40.174436	-104.865155
7,400.00	60.51	181.54	7,157.18	792.63	-93.71	1,306,941.460	3,177,395.933	40.174207	-104.865164
7,500.00	68.51	181.38	7,200.19	702.47	-96.00	1,306,851.285	3,177,394.290	40.173959	-104.865172
7,600.00	76.51	181.23	7,230.22	607.20	-98.17	1,306,755.999	3,177,392.804	40.173698	-104.865180
7,700.00	84.50	181.10	7,246.71	508.67	-100.17	1,306,657.458	3,177,391.505	40.173427	-104.865187
7,768.71	90.00	181.01	7,250.00	440.07	-101.44	1,306,588.858	3,177,390.733	40.173239	-104.865191
LP 90 Inc, 181.01 Az - ECHEVERRIA 2E-2H-D267 TPZ									
7,800.00	90.00	181.01	7,250.00	408.79	-101.99	1,306,557.569	3,177,390.405	40.173153	-104.865193
7,900.00	90.00	181.01	7,250.00	308.80	-103.75	1,306,457.575	3,177,389.358	40.172879	-104.865200
8,000.00	90.00	181.01	7,250.00	208.82	-105.52	1,306,357.580	3,177,388.311	40.172604	-104.865206
8,100.00	90.00	181.01	7,250.00	108.83	-107.28	1,306,257.586	3,177,387.264	40.172330	-104.865212
8,200.00	90.00	181.01	7,250.00	8.85	-109.04	1,306,157.591	3,177,386.216	40.172055	-104.865218
8,300.00	90.00	181.01	7,250.00	-91.13	-110.81	1,306,057.597	3,177,385.169	40.171781	-104.865225
8,400.00	90.00	181.01	7,250.00	-191.12	-112.57	1,305,957.602	3,177,384.122	40.171506	-104.865231
8,500.00	90.00	181.01	7,250.00	-291.10	-114.33	1,305,857.608	3,177,383.075	40.171232	-104.865237
8,600.00	90.00	181.01	7,250.00	-391.09	-116.10	1,305,757.613	3,177,382.028	40.170957	-104.865244
8,700.00	90.00	181.01	7,250.00	-491.07	-117.86	1,305,657.619	3,177,380.980	40.170683	-104.865250
8,800.00	90.00	181.01	7,250.00	-591.06	-119.62	1,305,557.624	3,177,379.933	40.170409	-104.865256
8,900.00	90.00	181.01	7,250.00	-691.04	-121.39	1,305,457.630	3,177,378.886	40.170134	-104.865263
9,000.00	90.00	181.01	7,250.00	-791.03	-123.15	1,305,357.635	3,177,377.839	40.169860	-104.865269
9,100.00	90.00	181.01	7,250.00	-891.01	-124.91	1,305,257.641	3,177,376.792	40.169585	-104.865275
9,200.00	90.00	181.01	7,250.00	-990.99	-126.68	1,305,157.646	3,177,375.745	40.169311	-104.865282
9,300.00	90.00	181.01	7,250.00	-1,090.98	-128.44	1,305,057.652	3,177,374.697	40.169036	-104.865288
9,400.00	90.00	181.01	7,250.00	-1,190.96	-130.20	1,304,957.657	3,177,373.650	40.168762	-104.865294
9,500.00	90.00	181.01	7,250.00	-1,290.95	-131.97	1,304,857.663	3,177,372.603	40.168487	-104.865300
9,518.71	90.00	181.01	7,250.00	-1,309.65	-132.30	1,304,838.955	3,177,372.407	40.168436	-104.865302
Start Turn -2.00									
9,600.00	90.00	179.38	7,250.00	-1,390.94	-132.58	1,304,757.667	3,177,372.709	40.168213	-104.865303
9,700.00	90.00	177.38	7,250.00	-1,490.90	-129.76	1,304,657.734	3,177,376.244	40.167938	-104.865293

Database:	EDM 5000.15 Single User Db	Local Co-ordinate Reference:	Well ECHEVERRIA 2E-2H-D267
Company:	Crestone Peak Resources	TVD Reference:	WELL @ 4905.00usft (Original Well Elev)
Project:	Sec 2 T2N-R67W	MD Reference:	WELL @ 4905.00usft (Original Well Elev)
Site:	Echeverria Pad	North Reference:	True
Well:	ECHEVERRIA 2E-2H-D267	Survey Calculation Method:	Minimum Curvature
Wellbore:	Wellbore #1		
Design:	Design #1 23apr18 kjs		

Planned Survey										
Measured Depth (usft)	Inclination (°)	Azimuth (°)	Vertical Depth (usft)	+N/-S (usft)	+E/-W (usft)	Map Northing (usft)	Map Easting (usft)	Latitude	Longitude	
9,748.71	90.00	176.41	7,250.00	-1,539.53	-127.12	1,304,609.118	3,177,379.228	40.167805	-104.865283	
Hold 176.41 Az										
9,800.00	90.00	176.41	7,250.00	-1,590.72	-123.91	1,304,557.951	3,177,382.806	40.167664	-104.865272	
9,900.00	90.00	176.41	7,250.00	-1,690.53	-117.65	1,304,458.195	3,177,389.782	40.167390	-104.865249	
10,000.00	90.00	176.41	7,250.00	-1,790.33	-111.39	1,304,358.439	3,177,396.758	40.167116	-104.865227	
10,100.00	90.00	176.41	7,250.00	-1,890.14	-105.13	1,304,258.682	3,177,403.733	40.166842	-104.865204	
10,200.00	90.00	176.41	7,250.00	-1,989.94	-98.87	1,304,158.926	3,177,410.709	40.166568	-104.865182	
10,300.00	90.00	176.41	7,250.00	-2,089.74	-92.61	1,304,059.169	3,177,417.685	40.166294	-104.865160	
10,398.71	90.00	176.41	7,250.00	-2,188.26	-86.43	1,303,960.701	3,177,424.570	40.166024	-104.865138	
Start 2/100 Turn										
10,400.00	90.00	176.44	7,250.00	-2,189.55	-86.35	1,303,959.413	3,177,424.660	40.166020	-104.865137	
10,500.00	90.00	178.44	7,250.00	-2,289.44	-81.87	1,303,859.553	3,177,429.848	40.165746	-104.865121	
10,600.00	90.00	180.44	7,250.00	-2,389.43	-80.89	1,303,759.572	3,177,431.548	40.165472	-104.865118	
10,686.71	90.00	182.17	7,250.00	-2,476.11	-82.86	1,303,672.879	3,177,430.197	40.165234	-104.865125	
Hold 182.17 Az										
10,700.00	90.00	182.17	7,250.00	-2,489.40	-83.36	1,303,659.592	3,177,429.789	40.165197	-104.865127	
10,800.00	90.00	182.17	7,250.00	-2,589.33	-87.15	1,303,559.640	3,177,426.718	40.164923	-104.865140	
10,900.00	90.00	182.17	7,250.00	-2,689.25	-90.94	1,303,459.687	3,177,423.647	40.164649	-104.865154	
11,000.00	90.00	182.17	7,250.00	-2,789.18	-94.73	1,303,359.734	3,177,420.575	40.164374	-104.865167	
11,100.00	90.00	182.17	7,250.00	-2,889.11	-98.51	1,303,259.781	3,177,417.504	40.164100	-104.865181	
11,200.00	90.00	182.17	7,250.00	-2,989.04	-102.30	1,303,159.828	3,177,414.433	40.163826	-104.865194	
11,300.00	90.00	182.17	7,250.00	-3,088.97	-106.09	1,303,059.876	3,177,411.362	40.163551	-104.865208	
11,400.00	90.00	182.17	7,250.00	-3,188.89	-109.87	1,302,959.923	3,177,408.290	40.163277	-104.865221	
11,500.00	90.00	182.17	7,250.00	-3,288.82	-113.66	1,302,859.970	3,177,405.219	40.163003	-104.865235	
11,600.00	90.00	182.17	7,250.00	-3,388.75	-117.45	1,302,760.017	3,177,402.148	40.162728	-104.865248	
11,700.00	90.00	182.17	7,250.00	-3,488.68	-121.24	1,302,660.064	3,177,399.077	40.162454	-104.865262	
11,800.00	90.00	182.17	7,250.00	-3,588.61	-125.02	1,302,560.111	3,177,396.005	40.162180	-104.865276	
11,900.00	90.00	182.17	7,250.00	-3,688.54	-128.81	1,302,460.159	3,177,392.934	40.161906	-104.865289	
12,000.00	90.00	182.17	7,250.00	-3,788.46	-132.60	1,302,360.206	3,177,389.863	40.161631	-104.865303	
12,100.00	90.00	182.17	7,250.00	-3,888.39	-136.38	1,302,260.253	3,177,386.792	40.161357	-104.865316	
12,196.16	90.00	182.17	7,250.00	-3,984.49	-140.03	1,302,164.135	3,177,383.838	40.161093	-104.865329	
TD at 12196.16 - ECHEVERRIA 2E-2H-D267 BHL										

Design Targets										
Target Name										
- hit/miss target	Dip Angle (°)	Dip Dir. (°)	TVD (usft)	+N/-S (usft)	+E/-W (usft)	Northing (usft)	Easting (usft)	Latitude	Longitude	
- Shape										
ECHEVERRIA 2E-2H-D: - plan hits target center - Point	0.00	0.41	7,250.00	440.07	-101.44	1,306,588.858	3,177,390.733	40.173239	-104.865191	
ECHEVERRIA 2E-2H-D: - plan hits target center - Point	0.00	0.41	7,250.00	-3,984.49	-140.03	1,302,164.134	3,177,383.838	40.161093	-104.865329	



Planning Report - Geographic

Database:	EDM 5000.15 Single User Db	Local Co-ordinate Reference:	Well ECHEVERRIA 2E-2H-D267
Company:	Crestone Peak Resources	TVD Reference:	WELL @ 4905.00usft (Original Well Elev)
Project:	Sec 2 T2N-R67W	MD Reference:	WELL @ 4905.00usft (Original Well Elev)
Site:	Echeverria Pad	North Reference:	True
Well:	ECHEVERRIA 2E-2H-D267	Survey Calculation Method:	Minimum Curvature
Wellbore:	Wellbore #1		
Design:	Design #1 23apr18 kjs		

Plan Annotations				
Measured Depth (usft)	Vertical Depth (usft)	Local Coordinates		Comment
		+N/-S (usft)	+E/-W (usft)	
250.00	250.00	0.00	0.00	Start Build 2.00
801.94	798.53	52.89	-3.48	Hold 11.04 Inc, 356.24 Az
6,506.21	6,397.26	1,142.76	-75.19	KOP 8/100
7,768.71	7,250.00	440.07	-101.44	LP 90 Inc, 181.01 Az
9,518.71	7,250.00	-1,309.65	-132.30	Start Turn -2.00
9,748.71	7,250.00	-1,539.53	-127.12	Hold 176.41 Az
10,398.71	7,250.00	-2,188.26	-86.43	Start 2/100 Turn
10,686.71	7,250.00	-2,476.11	-82.86	Hold 182.17 Az
12,196.16	7,250.00	-3,984.49	-140.03	TD at 12196.16