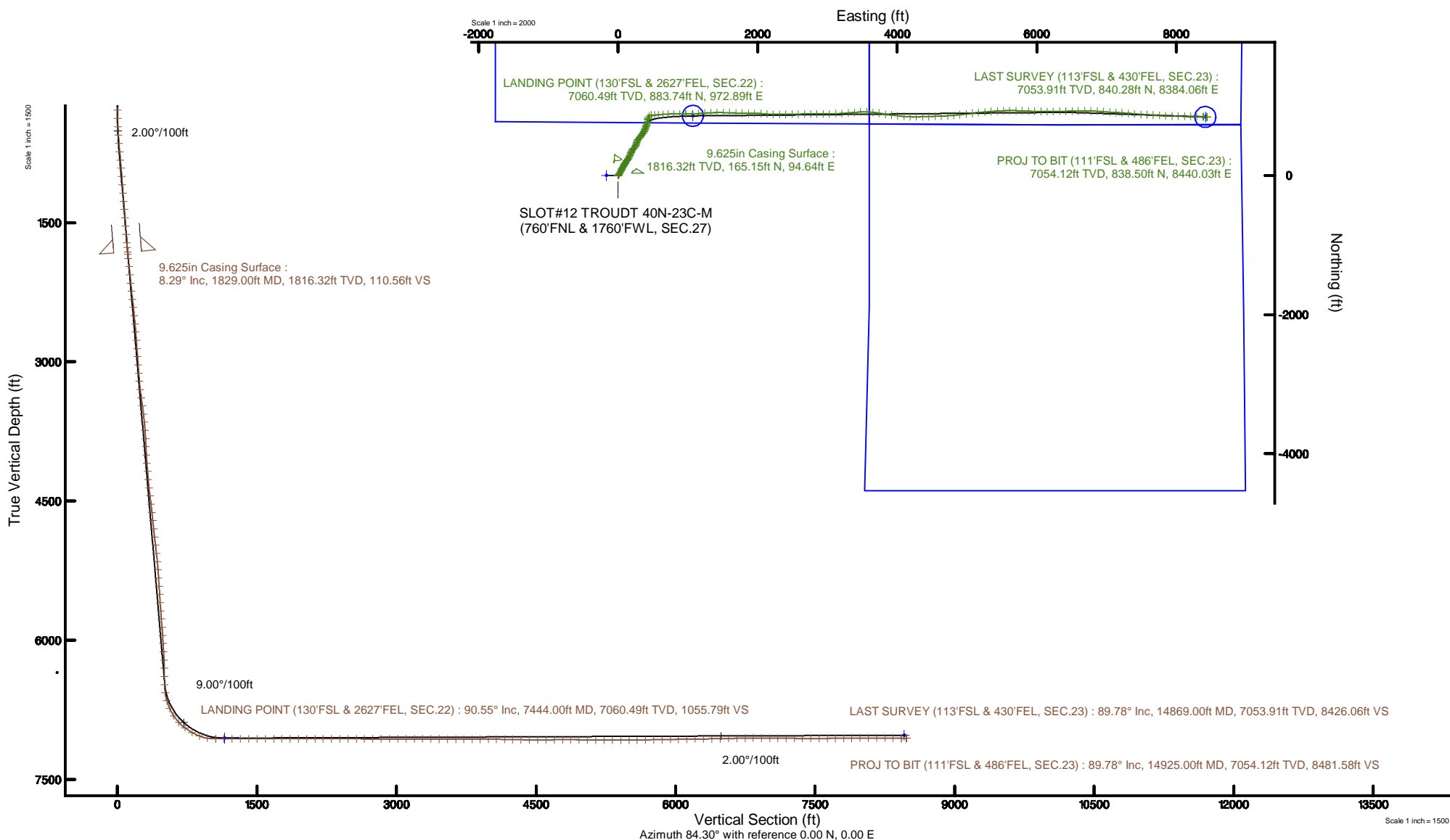


SRC ENERGY

Location: COLORADO Slot: SLOT#12 TROUDT 40N-23C-M (760'FNL & 1760'FWL, SEC.27)
 Field: WELD COUNTY (NAD83,TRUE NORTH) Well: TROUDT 40N-23C-M
 Facility: SEC.27-T06N-R66W Wellbore: TROUDT 40N-23C-M PWB

Plot reference wellpath is TROUDT 40N-23C-M PWB (REV-B.0)	Grid System: NAD83 / Lambert Colorado SP, Northern Zone (501), US feet
True vertical depths are referenced to PD 562 (25) (RKB)	North Reference: True north
Measured depths are referenced to PD 562 (25) (RKB)	Scale: True distance
PD 562 (25) (RKB) to Mean Sea Level: 4744 feet	Depths are in feet
Mean Sea Level to Mud line (At Slot: SLOT#12 TROUDT 40N-23C-M (760'FNL & 1760'FWL, SEC.27)): 0 feet	Created by: robale01 on 2018-10-23
Coordinates are in feet referenced to Slot	Database: WA DENVER





Actual Wellpath Report

TROUDT 40N-23C-M AWP

Page 1 of 9



REFERENCE WELLPATH IDENTIFICATION

Operator	SRC ENERGY	Slot	SLOT#12 TROUDT 40N-23C-M (760'FNL & 1760'FWL, SEC.27)
Area	COLORADO	Well	TROUDT 40N-23C-M
Field	WELD COUNTY (NAD83,TRUE NORTH)	Wellbore	TROUDT 40N-23C-M AWB
Facility	SEC.27-T06N-R66W		

REPORT SETUP INFORMATION

Projection System	NAD83 / Lambert Colorado SP, Northern Zone (501), US feet	Software System	WellArchitect® 5.1
North Reference	True	User	Hanisab
Scale	0.999964	Report Generated	10/29/2018 at 11:49:03 PM
Convergence at slot	0.47° East	Database/Source file	WA DENVER/TROUDT_40N-23C-M_AWP.xml

WELLPATH LOCATION

	Local coordinates		Grid coordinates		Geographic coordinates	
	North[ft]	East[ft]	Easting[US ft]	Northing[US ft]	Latitude	Longitude
Slot Location	-0.02	165.01	3203938.74	1412934.05	40°27'52.531"N	104°46'01.362"W
Facility Reference Pt			3203773.74	1412932.71	40°27'52.531"N	104°46'03.497"W
Field Reference Pt			3171284.48	1426358.81	40°30'07.643"N	104°53'02.634"W

WELLPATH DATUM

Calculation method	Minimum curvature	PD 562 (25') (RKB) to Facility Vertical Datum	4744.00ft
Horizontal Reference Pt	Slot	PD 562 (25') (RKB) to Mean Sea Level	4744.00ft
Vertical Reference Pt	PD 562 (25') (RKB)	PD 562 (25') (RKB) to Mud Line at Slot (SLOT#12 TROUDT 40N-23C-M (760'FNL & 1760'FWL, SEC.27))	4744.00ft
MD Reference Pt	PD 562 (25') (RKB)	Section Origin	N 0.00, E 0.00 ft
Field Vertical Reference	Mean Sea Level	Section Azimuth	84.33°



Actual Wellpath Report

TROUDT 40N-23C-M AWP

Page 2 of 9



REFERENCE WELLPATH IDENTIFICATION

Operator	SRC ENERGY	Slot	SLOT#12 TROUDT 40N-23C-M (760'FNL & 1760'FWL, SEC.27)
Area	COLORADO	Well	TROUDT 40N-23C-M
Field	WELD COUNTY (NAD83,TRUE NORTH)	Wellbore	TROUDT 40N-23C-M AWB
Facility	SEC.27-T06N-R66W		

WELLPATH DATA (170 stations) † = interpolated/extrapolated station

MD [ft]	Inclination [°]	Azimuth [°]	TVD [ft]	Vert Sect [ft]	North [ft]	East [ft]	DLS [°/100ft]	Comments
0.00†	0.000	80.780	0.00	0.00	0.00	0.00	0.00	
25.00	0.000	80.780	25.00	0.00	0.00	0.00	0.00	
109.00	0.840	80.780	109.00	0.61	0.10	0.61	1.00	
197.00	0.990	73.790	196.99	2.01	0.41	1.97	0.21	
287.00	0.890	64.450	286.97	3.43	0.93	3.35	0.20	
377.00	1.400	30.760	376.96	4.74	2.18	4.54	0.92	
467.00	3.310	26.010	466.88	6.76	5.46	6.25	2.13	
557.00	5.430	32.020	556.61	10.72	11.41	9.64	2.41	
647.00	7.100	34.860	646.07	16.94	19.58	15.08	1.89	
737.00	8.000	33.210	735.29	24.49	29.38	21.69	1.03	
827.00	8.530	30.620	824.35	32.37	40.37	28.52	0.72	
917.00	8.340	28.040	913.38	39.95	51.87	34.99	0.47	
1007.00	7.660	29.650	1002.50	47.04	62.85	41.02	0.80	
1097.00	8.060	26.250	1091.66	53.84	73.72	46.78	0.68	
1187.00	7.830	24.900	1180.80	60.30	84.94	52.15	0.33	
1277.00	8.110	28.070	1269.93	66.94	96.10	57.72	0.58	
1367.00	8.060	27.890	1359.03	73.96	107.28	63.66	0.06	
1457.00	7.930	28.120	1448.16	80.90	118.33	69.54	0.15	
1547.00	7.170	29.020	1537.38	87.55	128.72	75.19	0.85	
1637.00	8.030	28.910	1626.58	94.31	139.13	80.95	0.96	
1727.00	9.250	27.670	1715.56	101.86	151.04	87.35	1.37	
1780.00	9.120	27.380	1767.88	106.49	158.54	91.26	0.26	
1854.00	7.870	26.310	1841.07	112.37	168.29	96.20	1.70	
1899.00	8.250	32.390	1885.62	115.99	173.78	99.30	2.07	
1988.00	9.510	35.210	1973.56	124.74	185.18	106.96	1.50	
2078.00	9.360	33.440	2062.34	134.23	197.36	115.28	0.36	
2167.00	9.490	35.900	2150.14	143.66	209.35	123.57	0.48	
2256.00	9.450	35.700	2237.93	153.36	221.22	132.14	0.06	
2346.00	9.590	33.770	2326.69	163.01	233.45	140.61	0.39	
2435.00	9.480	33.350	2414.46	172.33	245.74	148.76	0.15	



Actual Wellpath Report

TROUDT 40N-23C-M AWP

Page 3 of 9



REFERENCE WELLPATH IDENTIFICATION

Operator	SRC ENERGY	Slot	SLOT#12 TROUDT 40N-23C-M (760'FNL & 1760'FWL, SEC.27)
Area	COLORADO	Well	TROUDT 40N-23C-M
Field	WELD COUNTY (NAD83,TRUE NORTH)	Wellbore	TROUDT 40N-23C-M AWB
Facility	SEC.27-T06N-R66W		

WELLPATH DATA (170 stations)

MD [ft]	Inclination [°]	Azimuth [°]	TVD [ft]	Vert Sect [ft]	North [ft]	East [ft]	DLS [°/100ft]	Comments
2524.00	9.450	30.840	2502.25	181.29	258.14	156.54	0.46	
2613.00	9.430	29.680	2590.04	189.86	270.74	163.90	0.21	
2703.00	9.520	24.870	2678.81	197.91	283.90	170.68	0.89	
2792.00	9.170	17.610	2766.64	204.45	297.34	175.92	1.38	
2882.00	9.050	19.260	2855.50	210.27	310.86	180.42	0.32	
2971.00	9.340	22.270	2943.36	216.60	324.15	185.47	0.63	
3061.00	9.030	23.400	3032.20	223.46	337.39	191.04	0.40	
3150.00	9.020	22.390	3120.10	230.13	350.25	196.47	0.18	
3240.00	9.220	25.080	3208.96	237.14	363.30	202.21	0.52	
3329.00	9.210	40.270	3296.83	245.91	375.20	209.84	2.73	
3419.00	9.120	52.710	3385.69	257.16	385.01	220.17	2.20	
3508.00	8.770	55.400	3473.61	269.10	393.14	231.37	0.61	
3598.00	10.010	38.540	3562.42	280.56	403.16	241.89	3.34	
3687.00	10.140	25.170	3650.06	289.98	416.30	250.05	2.63	
3777.00	9.920	20.800	3738.68	297.49	430.72	256.17	0.88	
3866.00	9.990	13.260	3826.34	303.42	445.40	260.66	1.47	
3956.00	8.260	5.010	3915.21	307.15	459.44	263.02	2.41	
4045.00	8.860	19.800	4003.23	311.28	472.26	265.90	2.56	
4134.00	8.950	25.470	4091.15	317.81	484.96	271.20	0.99	
4224.00	8.890	25.290	4180.07	325.01	497.56	277.18	0.07	
4314.00	8.620	27.860	4269.02	332.31	509.81	283.30	0.53	
4403.00	9.150	36.820	4356.95	340.78	521.38	290.66	1.66	
4492.00	9.160	42.910	4444.82	350.87	532.23	299.72	1.09	
4582.00	9.080	40.450	4533.68	361.36	542.88	309.21	0.44	
4671.00	9.220	38.340	4621.55	371.38	553.82	318.19	0.41	
4761.00	9.460	32.220	4710.36	380.93	565.73	326.60	1.13	
4850.00	8.890	35.270	4798.22	389.93	577.53	334.47	0.84	
4940.00	9.210	41.020	4887.10	399.73	588.65	343.22	1.07	
5029.00	8.930	39.670	4974.99	409.83	599.34	352.30	0.40	
5118.00	9.030	36.010	5062.90	419.38	610.30	360.82	0.65	



Actual Wellpath Report

TROUDT 40N-23C-M AWP

Page 4 of 9



REFERENCE WELLPATH IDENTIFICATION

Operator	SRC ENERGY	Slot	SLOT#12 TROUDT 40N-23C-M (760'FNL & 1760'FWL, SEC.27)
Area	COLORADO	Well	TROUDT 40N-23C-M
Field	WELD COUNTY (NAD83,TRUE NORTH)	Wellbore	TROUDT 40N-23C-M AWB
Facility	SEC.27-T06N-R66W		

WELLPATH DATA (170 stations)

MD [ft]	Inclination [°]	Azimuth [°]	TVD [ft]	Vert Sect [ft]	North [ft]	East [ft]	DLS [°/100ft]	Comments
5208.00	8.810	32.120	5151.81	428.30	621.85	368.63	0.71	
5297.00	8.780	27.770	5239.77	436.23	633.64	375.42	0.75	
5387.00	8.940	19.500	5328.70	442.99	646.31	380.96	1.43	
5476.00	9.290	15.220	5416.57	448.49	659.76	385.15	0.86	
5566.00	9.230	17.970	5505.40	453.97	673.63	389.29	0.50	
5655.00	9.120	19.330	5593.26	459.82	687.08	393.82	0.27	
5745.00	9.250	22.280	5682.11	466.22	700.50	398.93	0.54	
5834.00	9.000	25.610	5769.98	473.19	713.40	404.65	0.66	
5923.00	7.890	24.310	5858.02	479.86	725.24	410.17	1.27	
6013.00	8.530	22.500	5947.09	486.10	737.04	415.27	0.77	
6102.00	8.350	18.860	6035.13	491.90	749.25	419.88	0.63	
6192.00	8.570	15.810	6124.15	497.07	761.89	423.82	0.56	
6281.00	8.720	8.960	6212.14	501.20	774.93	426.68	1.17	
6371.00	8.580	0.660	6301.12	503.66	788.39	427.82	1.39	
6460.00	9.780	0.680	6388.98	505.23	802.58	427.99	1.35	
6550.00	9.670	4.850	6477.69	507.46	817.76	428.72	0.79	
6639.00	12.750	23.650	6565.01	513.64	834.21	433.29	5.33	
6728.00	20.030	51.870	6650.47	531.36	852.67	449.26	11.90	
6818.00	24.460	82.260	6734.02	563.11	864.74	479.97	13.52	
6907.00	31.680	91.090	6812.53	604.80	866.78	521.66	9.34	
6997.00	43.170	84.740	6883.91	659.26	869.17	576.15	13.45	
7086.00	53.480	84.120	6943.01	725.64	875.64	642.22	11.60	
7176.00	59.850	87.120	6992.45	800.76	881.31	717.15	7.60	
7265.00	69.460	89.230	7030.51	880.91	883.80	797.44	11.01	
7354.00	80.540	90.160	7053.51	966.37	884.24	883.28	12.49	
7444.00	90.550	90.480	7060.49	1055.49	883.74	972.89	11.13	LANDING POINT (130'FSL & 2627'FEL, SEC.22)
7533.00	89.780	89.830	7060.23	1144.03	883.50	1061.89	1.13	
7623.00	89.820	85.370	7060.55	1233.86	887.27	1151.78	4.96	
7712.00	90.030	85.830	7060.66	1322.84	894.10	1240.52	0.57	
7802.00	89.880	87.590	7060.73	1412.75	899.26	1330.37	1.96	



Actual Wellpath Report

TROUDT 40N-23C-M AWP

Page 5 of 9



REFERENCE WELLPATH IDENTIFICATION

Operator	SRC ENERGY	Slot	SLOT#12 TROUDT 40N-23C-M (760'FNL & 1760'FWL, SEC.27)
Area	COLORADO	Well	TROUDT 40N-23C-M
Field	WELD COUNTY (NAD83,TRUE NORTH)	Wellbore	TROUDT 40N-23C-M AWB
Facility	SEC.27-T06N-R66W		

WELLPATH DATA (170 stations)

MD [ft]	Inclination [°]	Azimuth [°]	TVD [ft]	Vert Sect [ft]	North [ft]	East [ft]	DLS [°/100ft]	Comments
7891.00	90.030	89.080	7060.80	1501.53	901.85	1419.33	1.68	
7981.00	90.150	91.580	7060.66	1591.03	901.33	1509.32	2.78	
8071.00	90.120	92.210	7060.45	1680.25	898.35	1599.27	0.70	
8160.00	90.030	92.260	7060.33	1768.40	894.88	1688.20	0.12	
8249.00	90.150	91.420	7060.19	1856.64	892.02	1777.16	0.95	
8339.00	90.030	90.820	7060.05	1946.00	890.27	1867.14	0.68	
8428.00	90.060	89.050	7059.98	2034.57	890.37	1956.13	1.99	
8518.00	90.030	94.250	7059.91	2123.81	887.78	2046.07	5.78	
8607.00	89.750	94.410	7060.08	2211.46	881.06	2134.81	0.36	
8697.00	89.600	91.670	7060.59	2300.41	876.28	2224.67	3.05	
8786.00	90.000	89.470	7060.90	2388.87	875.40	2313.66	2.51	
8876.00	89.720	88.490	7061.12	2478.57	877.00	2403.65	1.13	
8966.00	89.820	88.740	7061.48	2568.32	879.18	2493.62	0.30	
9055.00	89.820	88.830	7061.76	2657.05	881.06	2582.60	0.10	
9144.00	89.660	89.410	7062.17	2745.74	882.43	2671.59	0.68	
9234.00	89.720	89.950	7062.66	2835.35	882.93	2761.59	0.60	
9323.00	90.060	90.740	7062.83	2923.85	882.40	2850.58	0.97	
9413.00	89.910	89.270	7062.85	3013.41	882.39	2940.58	1.64	
9502.00	90.030	89.120	7062.90	3102.09	883.64	3029.57	0.22	
9592.00	89.970	88.170	7062.90	3191.83	885.77	3119.55	1.06	
9681.00	90.000	86.280	7062.92	3280.71	890.08	3208.44	2.12	
9770.00	89.420	86.250	7063.37	3369.66	895.87	3297.25	0.65	
9860.00	89.630	83.820	7064.12	3459.64	903.66	3386.90	2.71	
9949.00	89.720	85.990	7064.62	3548.63	911.57	3475.54	2.44	
10039.00	89.910	92.950	7064.91	3638.22	912.40	3565.48	7.74	
10128.00	89.690	97.740	7065.22	3725.55	904.11	3654.07	5.39	
10217.00	89.970	98.910	7065.49	3811.90	891.22	3742.13	1.35	
10306.00	90.770	98.730	7064.91	3898.07	877.58	3830.07	0.92	
10396.00	89.510	96.930	7064.69	3985.58	865.32	3919.23	2.44	
10485.00	88.980	95.850	7065.87	4072.60	855.41	4007.67	1.35	



Actual Wellpath Report

TROUDT 40N-23C-M AWP

Page 6 of 9



REFERENCE WELLPATH IDENTIFICATION

Operator	SRC ENERGY	Slot	SLOT#12 TROUDT 40N-23C-M (760'FNL & 1760'FWL, SEC.27)
Area	COLORADO	Well	TROUDT 40N-23C-M
Field	WELD COUNTY (NAD83,TRUE NORTH)	Wellbore	TROUDT 40N-23C-M AWB
Facility	SEC.27-T06N-R66W		

WELLPATH DATA (170 stations)

MD [ft]	Inclination [°]	Azimuth [°]	TVD [ft]	Vert Sect [ft]	North [ft]	East [ft]	DLS [°/100ft]	Comments
10575.00	88.950	94.420	7067.49	4160.99	847.36	4097.29	1.59	
10664.00	88.740	92.200	7069.29	4248.87	842.22	4186.12	2.51	
10753.00	88.680	89.710	7071.29	4337.25	840.74	4275.07	2.80	
10843.00	89.600	88.200	7072.64	4426.94	842.38	4365.05	1.96	
10932.00	89.940	88.380	7073.00	4515.73	845.04	4454.00	0.43	
11022.00	90.060	87.100	7073.00	4605.57	848.58	4543.93	1.43	
11111.00	91.630	88.800	7071.68	4694.37	851.77	4632.86	2.60	
11201.00	90.060	86.960	7070.36	4784.18	855.10	4722.78	2.69	
11290.00	89.720	84.200	7070.53	4873.15	861.96	4811.51	3.12	
11379.00	88.650	83.430	7071.79	4962.14	871.54	4899.98	1.48	
11469.00	89.080	83.630	7073.58	5052.11	881.68	4989.39	0.53	
11558.00	89.260	83.400	7074.87	5141.09	891.73	5077.81	0.33	
11648.00	90.060	83.850	7075.40	5231.08	901.73	5167.25	1.02	
11737.00	89.820	84.800	7075.49	5320.08	910.53	5255.81	1.10	
11826.00	90.030	85.410	7075.61	5409.07	918.12	5344.49	0.72	
11916.00	90.000	86.680	7075.59	5499.03	924.33	5434.27	1.41	
12005.00	90.950	88.550	7074.85	5587.88	928.03	5523.19	2.36	
12095.00	91.320	89.520	7073.07	5677.55	929.55	5613.16	1.15	
12184.00	91.360	91.380	7070.98	5766.02	928.85	5702.12	2.09	
12274.00	90.990	92.480	7069.14	5855.21	925.82	5792.05	1.29	
12363.00	90.830	92.310	7067.73	5943.31	922.10	5880.96	0.26	
12452.00	90.830	91.110	7066.44	6031.57	919.44	5969.91	1.35	
12542.00	90.920	90.660	7065.06	6120.97	918.05	6059.89	0.51	
12631.00	90.740	90.620	7063.77	6209.42	917.06	6148.88	0.21	
12721.00	90.860	89.260	7062.52	6298.97	917.15	6238.87	1.52	
12810.00	91.200	88.390	7060.92	6387.68	918.98	6327.83	1.05	
12900.00	90.890	88.540	7059.27	6477.43	921.39	6417.78	0.38	
12990.00	90.950	88.890	7057.83	6567.16	923.41	6507.75	0.39	
13080.00	91.260	89.220	7056.09	6656.84	924.89	6597.72	0.50	
13170.00	91.110	89.880	7054.23	6746.44	925.60	6687.70	0.75	



Actual Wellpath Report

TROUDT 40N-23C-M AWP

Page 7 of 9



REFERENCE WELLPATH IDENTIFICATION

Operator	SRC ENERGY	Slot	SLOT#12 TROUDT 40N-23C-M (760'FNL & 1760'FWL, SEC.27)
Area	COLORADO	Well	TROUDT 40N-23C-M
Field	WELD COUNTY (NAD83,TRUE NORTH)	Wellbore	TROUDT 40N-23C-M AWB
Facility	SEC.27-T06N-R66W		

WELLPATH DATA (170 stations)

MD [ft]	Inclination [°]	Azimuth [°]	TVD [ft]	Vert Sect [ft]	North [ft]	East [ft]	DLS [°/100ft]	Comments
13259.00	89.750	91.410	7053.56	6834.89	924.60	6776.69	2.30	
13349.00	89.570	93.300	7054.10	6924.01	920.90	6866.60	2.11	
13438.00	89.260	95.460	7055.01	7011.63	914.10	6955.33	2.45	
13528.00	89.780	93.280	7055.76	7100.24	907.25	7045.06	2.49	
13617.00	89.690	91.990	7056.17	7188.31	903.15	7133.97	1.45	
13706.00	89.690	94.390	7056.65	7276.23	898.20	7222.82	2.70	
13796.00	89.820	94.750	7057.04	7364.80	891.03	7312.53	0.43	
13886.00	89.850	94.200	7057.30	7453.39	884.01	7402.26	0.61	
13975.00	90.000	93.860	7057.42	7541.12	877.75	7491.04	0.42	
14065.00	90.740	94.200	7056.83	7629.83	871.43	7580.81	0.90	
14154.00	90.430	94.250	7055.93	7717.50	864.87	7669.57	0.35	
14244.00	90.550	93.260	7055.16	7806.28	858.98	7759.37	1.11	
14333.00	90.580	92.080	7054.28	7894.33	854.83	7848.27	1.33	
14422.00	90.030	91.630	7053.80	7982.56	851.95	7937.22	0.80	
14512.00	90.000	91.290	7053.78	8071.86	849.66	8027.19	0.38	
14601.00	90.030	91.070	7053.76	8160.23	847.83	8116.17	0.25	
14691.00	89.910	91.760	7053.80	8249.54	845.60	8206.14	0.78	
14780.00	90.090	91.640	7053.80	8337.80	842.96	8295.10	0.24	
14869.00	89.780	91.820	7053.91	8426.06	840.28	8384.06	0.40	LAST SURVEY (113'FSL & 430'FEL, SEC.23)
14925.00	89.780	91.820	7054.12	8481.58	838.50	8440.03	0.00	PROJ TO BIT (111'FSL & 486'FEL, SEC.23)

HOLE & CASING SECTIONS - Ref Wellbore: TROUDT 40N-23C-M AWB Ref Wellpath: TROUDT 40N-23C-M AWP

String/Diameter	Start MD [ft]	End MD [ft]	Interval [ft]	Start TVD [ft]	End TVD [ft]	Start N/S [ft]	Start E/W [ft]	End N/S [ft]	End E/W [ft]
9.625in Casing Surface	25.00	1829.00	1804.00	25.00	1816.32	0.00	0.00	165.15	94.64



Actual Wellpath Report

TROUDT 40N-23C-M AWP

Page 8 of 9



REFERENCE WELLPATH IDENTIFICATION

Operator	SRC ENERGY	Slot	SLOT#12 TROUDT 40N-23C-M (760'FNL & 1760'FWL, SEC.27)
Area	COLORADO	Well	TROUDT 40N-23C-M
Field	WELD COUNTY (NAD83,TRUE NORTH)	Wellbore	TROUDT 40N-23C-M AWB
Facility	SEC.27-T06N-R66W		

TARGETS

Name	TVD [ft]	North [ft]	East [ft]	Grid East [US ft]	Grid North [US ft]	Latitude	Longitude	Shape
SEC.23-T06N-R66W	-8.00	4231.32	-2032.31	3201871.60	1417148.27	40°28'34.342"N	104°46'27.660"W	polygon
SEC.22-T06N-R66W	6.00	1412.78	-8174.14	3195753.51	1414279.17	40°28'06.478"N	104°47'47.123"W	polygon
SEC.27-T06N-R66W	19.00	-4766.34	910.38	3204888.45	1408175.58	40°27'05.432"N	104°45'49.586"W	polygon
SEC.28-T06N-R66W	19.00	-4766.34	910.38	3204888.45	1408175.58	40°27'05.432"N	104°45'49.586"W	polygon
SEC.26-T06N-R66W	38.00	-4763.02	510.16	3204488.23	1408175.60	40°27'05.465"N	104°45'54.763"W	polygon
SEC.29-T06N-R66W EAST HALF	50.00	0.02	-165.01	3203773.74	1412932.71	40°27'52.531"N	104°46'03.497"W	polygon
TROUDT 40N-23C-M BHL ON PLAT (112'FSL & 510'FEL, SEC.23)	7022.00	839.38	8416.11	3212347.30	1413842.94	40°28'00.811"N	104°44'12.473"W	circle
TROUDT 40N-23C-M TOP OF PROD ON PLAT (101'FSL & 2529'FEL, SEC.22)	7054.00	854.37	1071.25	3205002.85	1413797.21	40°28'00.973"N	104°45'47.502"W	circle

WELLPATH COMPOSITION - Ref Wellbore: TROUDT 40N-23C-M AWB Ref Wellpath: TROUDT 40N-23C-M AWP

Start MD [ft]	End MD [ft]	Positional Uncertainty Model	Log Name/Comment	Wellbore
25.00	1780.00	BHI NaviTrak (Standard)	13 1/2" SURFACE SURVEYS <88-1759>	TROUDT 40N-23C-M AWB
1780.00	14869.00	BHI AutoTrak Curve (MagCAD+IFR1, Short spacing)	8 1/2" ATC MONOBORE SURVEYS <1854-14869>	TROUDT 40N-23C-M AWB
14869.00	14925.00	Blind Drilling (std)	Projection to bit	TROUDT 40N-23C-M AWB



Actual Wellpath Report

TROUDT 40N-23C-M AWP

Page 9 of 9



REFERENCE WELLPATH IDENTIFICATION

Operator	SRC ENERGY	Slot	SLOT#12 TROUDT 40N-23C-M (760'FNL & 1760'FWL, SEC.27)
Area	COLORADO	Well	TROUDT 40N-23C-M
Field	WELD COUNTY (NAD83,TRUE NORTH)	Wellbore	TROUDT 40N-23C-M AWB
Facility	SEC.27-T06N-R66W		

WELLPATH COMMENTS

MD [ft]	Inclination [°]	Azimuth [°]	TVD [ft]	Comment
7444.00	90.550	90.480	7060.49	LANDING POINT (130'FSL & 2627'FEL, SEC.22)
14869.00	89.780	91.820	7053.91	LAST SURVEY (113'FSL & 430'FEL, SEC.23)
14925.00	89.780	91.820	7054.12	PROJ TO BIT (111'FSL & 486'FEL, SEC.23)