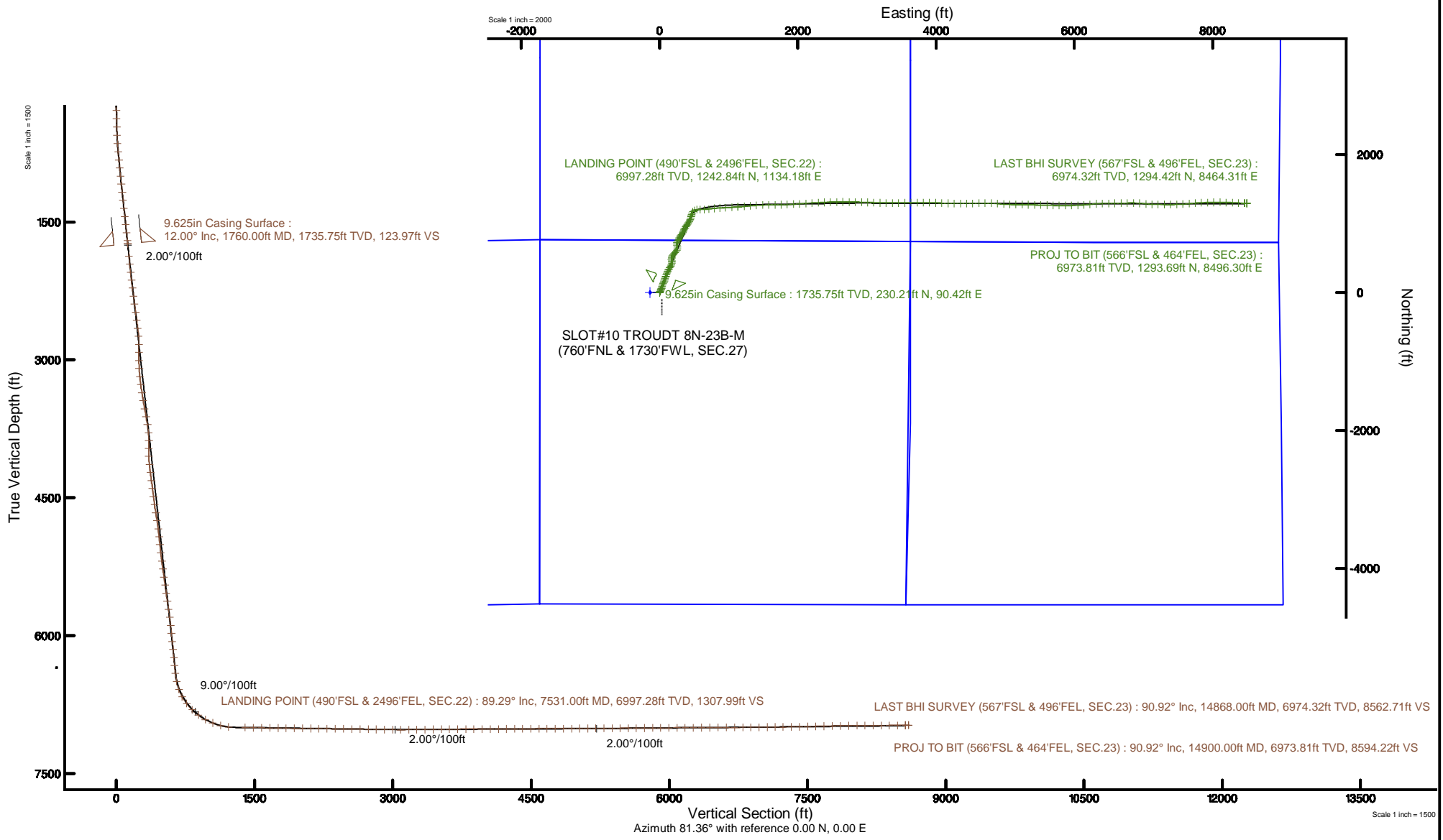


SRC ENERGY

Location: COLORADO Slot: SLOT#10 TROUDT 8N-23B-M (760'FNL & 1730'FWL, SEC.27)
 Field: WELD COUNTY (NAD83,TRUE NORTH) Well: TROUDT 8N-23B-M
 Facility: SEC.27-T06N-R66W Wellbore: TROUDT 8N-23B-M PWB

Plot reference wellpath is TROUDT 8N-23B-M PWP (REV-B.0)	Grid System: NAD83 / Lambert Colorado SP, Northern Zone (501), US feet
True vertical depths are referenced to PD 562 (25) (RKB)	North Reference: True north
Measured depths are referenced to PD 562 (25) (RKB)	Scale: True distance
PD 562 (25) (RKB) to Mean Sea Level: 4744 feet	Depths are in feet
Mean Sea Level to Mud line (At Slot: SLOT#10 TROUDT 8N-23B-M (760'FNL & 1730'FWL, SEC.27)): 0 feet	Created by: robiale01 on 2018-10-24
Coordinates are in feet referenced to Slot	Database: WA DENVER





Actual Wellpath Report

TROUDT 8N-23B-M AWP

Page 1 of 9



REFERENCE WELLPATH IDENTIFICATION

Operator	SRC ENERGY	Slot	SLOT#10 TROUDT 8N-23B-M (760'FNL & 1730'FWL, SEC.27)
Area	COLORADO	Well	TROUDT 8N-23B-M
Field	WELD COUNTY (NAD83,TRUE NORTH)	Wellbore	TROUDT 8N-23B-M AWB
Facility	SEC.27-T06N-R66W		

REPORT SETUP INFORMATION

Projection System	NAD83 / Lambert Colorado SP, Northern Zone (501), US feet	Software System	WellArchitect® 5.1
North Reference	True	User	Hanisab
Scale	0.999964	Report Generated	10/29/2018 at 11:36:36 PM
Convergence at slot	0.47° East	Database/Source file	WA DENVER/TROUDT_8N-23B-M_AWP.xml

WELLPATH LOCATION

	Local coordinates		Grid coordinates		Geographic coordinates	
	North[ft]	East[ft]	Easting[US ft]	Northing[US ft]	Latitude	Longitude
Slot Location	-0.02	134.94	3203908.67	1412933.81	40°27'52.531"N	104°46'01.751"W
Facility Reference Pt			3203773.74	1412932.71	40°27'52.531"N	104°46'03.497"W
Field Reference Pt			3171284.48	1426358.81	40°30'07.643"N	104°53'02.634"W

WELLPATH DATUM

Calculation method	Minimum curvature	PD 562 (25') (RKB) to Facility Vertical Datum	4744.00ft
Horizontal Reference Pt	Slot	PD 562 (25') (RKB) to Mean Sea Level	4744.00ft
Vertical Reference Pt	PD 562 (25') (RKB)	PD 562 (25') (RKB) to Mud Line at Slot (SLOT#10 TROUDT 8N-23B-M (760'FNL & 1730'FWL, SEC.27))	4744.00ft
MD Reference Pt	PD 562 (25') (RKB)	Section Origin	N 0.00, E 0.00 ft
Field Vertical Reference	Mean Sea Level	Section Azimuth	81.36°



Actual Wellpath Report

TROUDT 8N-23B-M AWP

Page 2 of 9



REFERENCE WELLPATH IDENTIFICATION

Operator	SRC ENERGY	Slot	SLOT#10 TROUDT 8N-23B-M (760'FNL & 1730'FWL, SEC.27)
Area	COLORADO	Well	TROUDT 8N-23B-M
Field	WELD COUNTY (NAD83,TRUE NORTH)	Wellbore	TROUDT 8N-23B-M AWB
Facility	SEC.27-T06N-R66W		

WELLPATH DATA (169 stations) † = interpolated/extrapolated station

MD [ft]	Inclination [°]	Azimuth [°]	TVD [ft]	Vert Sect [ft]	North [ft]	East [ft]	Latitude	Longitude	DLS [°/100ft]	Comments
0.00†	0.000	71.460	0.00	0.00	0.00	0.00	40°27'52.531"N	104°46'01.751"W	0.00	
25.00	0.000	71.460	25.00	0.00	0.00	0.00	40°27'52.531"N	104°46'01.751"W	0.00	
109.00	0.550	71.460	109.00	0.40	0.13	0.38	40°27'52.532"N	104°46'01.746"W	0.65	
197.00	0.290	39.330	197.00	0.98	0.43	0.92	40°27'52.535"N	104°46'01.739"W	0.39	
287.00	1.050	50.580	286.99	1.86	1.13	1.71	40°27'52.542"N	104°46'01.729"W	0.85	
377.00	2.220	27.060	376.95	3.58	3.21	3.14	40°27'52.563"N	104°46'01.710"W	1.47	
467.00	2.360	28.500	466.88	5.72	6.39	4.81	40°27'52.594"N	104°46'01.689"W	0.17	
557.00	4.170	24.380	556.73	8.62	11.00	7.05	40°27'52.640"N	104°46'01.660"W	2.03	
647.00	6.940	29.360	646.30	13.75	18.72	11.07	40°27'52.716"N	104°46'01.608"W	3.12	
737.00	9.140	24.930	735.41	21.05	29.94	16.74	40°27'52.827"N	104°46'01.534"W	2.54	
827.00	10.090	23.310	824.15	29.18	43.67	22.88	40°27'52.962"N	104°46'01.455"W	1.10	
917.00	11.950	17.810	912.48	37.50	59.78	28.85	40°27'53.122"N	104°46'01.378"W	2.37	
1007.00	12.060	16.860	1000.52	45.70	77.65	34.42	40°27'53.298"N	104°46'01.306"W	0.25	
1097.00	12.660	20.770	1088.43	54.59	95.87	40.65	40°27'53.478"N	104°46'01.225"W	1.14	
1187.00	12.600	20.860	1176.25	64.26	114.26	47.64	40°27'53.660"N	104°46'01.135"W	0.07	
1277.00	11.810	22.850	1264.22	73.91	131.92	54.71	40°27'53.835"N	104°46'01.043"W	0.99	
1367.00	12.660	22.040	1352.17	83.75	149.55	61.99	40°27'54.009"N	104°46'00.949"W	0.96	
1457.00	12.130	19.020	1440.08	93.17	167.64	68.77	40°27'54.187"N	104°46'00.861"W	0.93	
1547.00	12.650	19.790	1527.98	102.25	185.85	75.19	40°27'54.367"N	104°46'00.778"W	0.61	
1637.00	13.150	18.450	1615.71	111.61	204.83	81.77	40°27'54.555"N	104°46'00.693"W	0.65	
1727.00	12.340	18.940	1703.49	120.72	223.64	88.13	40°27'54.741"N	104°46'00.611"W	0.91	
1760.00	12.000	19.490	1735.75	123.97	230.21	90.42	40°27'54.806"N	104°46'00.581"W	1.09	
1897.00	12.110	18.740	1869.73	137.30	257.24	99.79	40°27'55.073"N	104°46'00.460"W	0.14	
1986.00	12.060	18.840	1956.76	145.88	274.88	105.79	40°27'55.247"N	104°46'00.382"W	0.06	
2076.00	12.070	21.870	2044.77	154.99	292.52	112.33	40°27'55.421"N	104°46'00.298"W	0.70	
2165.00	11.970	25.510	2131.82	164.90	309.48	119.77	40°27'55.589"N	104°46'00.201"W	0.86	
2254.00	12.080	27.470	2218.87	175.57	326.07	128.04	40°27'55.753"N	104°46'00.094"W	0.48	
2344.00	11.960	28.130	2306.89	186.70	342.65	136.78	40°27'55.917"N	104°45'59.981"W	0.20	
2433.00	11.560	35.480	2394.03	198.43	358.05	146.31	40°27'56.069"N	104°45'59.858"W	1.74	
2522.00	12.100	32.440	2481.14	210.77	373.18	156.49	40°27'56.219"N	104°45'59.726"W	0.93	



Actual Wellpath Report

TROUDT 8N-23B-M AWP

Page 3 of 9



REFERENCE WELLPATH IDENTIFICATION

Operator	SRC ENERGY	Slot	SLOT#10 TROUDT 8N-23B-M (760'FNL & 1730'FWL, SEC.27)
Area	COLORADO	Well	TROUDT 8N-23B-M
Field	WELD COUNTY (NAD83, TRUE NORTH)	Wellbore	TROUDT 8N-23B-M AWB
Facility	SEC.27-T06N-R66W		

WELLPATH DATA (169 stations)

MD [ft]	Inclination [°]	Azimuth [°]	TVD [ft]	Vert Sect [ft]	North [ft]	East [ft]	Latitude	Longitude	DLS [°/100ft]	Comments
2611.00	11.880	28.070	2568.20	222.37	389.14	165.80	40°27'56.376"N	104°45'59.606"W	1.05	
2701.00	12.060	25.470	2656.24	233.18	405.80	174.21	40°27'56.541"N	104°45'59.497"W	0.63	
2790.00	13.000	13.420	2743.14	242.16	423.94	180.53	40°27'56.720"N	104°45'59.415"W	3.11	
2880.00	12.870	350.170	2830.91	245.75	443.67	181.17	40°27'56.915"N	104°45'59.407"W	5.75	
2969.00	11.560	345.680	2917.90	244.66	462.08	177.27	40°27'57.097"N	104°45'59.458"W	1.82	
3059.00	11.970	358.990	3006.02	245.01	480.15	174.87	40°27'57.276"N	104°45'59.488"W	3.04	
3148.00	11.930	8.400	3093.10	248.93	498.48	176.05	40°27'57.457"N	104°45'59.473"W	2.19	
3238.00	11.600	20.280	3181.23	256.03	516.17	180.55	40°27'57.632"N	104°45'59.415"W	2.71	
3327.00	12.260	29.390	3268.31	266.18	532.80	188.29	40°27'57.796"N	104°45'59.315"W	2.24	
3417.00	12.390	36.450	3356.24	278.91	548.90	198.72	40°27'57.955"N	104°45'59.180"W	1.68	
3506.00	13.040	37.300	3443.06	292.89	564.56	210.47	40°27'58.110"N	104°45'59.028"W	0.76	
3596.00	12.960	42.620	3530.76	308.05	580.07	223.46	40°27'58.263"N	104°45'58.860"W	1.33	
3685.00	13.350	41.460	3617.42	323.72	595.11	237.02	40°27'58.412"N	104°45'58.684"W	0.53	
3775.00	14.410	29.290	3704.81	338.58	612.67	249.38	40°27'58.585"N	104°45'58.524"W	3.44	
3864.00	16.600	10.230	3790.62	349.51	634.86	257.06	40°27'58.804"N	104°45'58.425"W	6.20	
3954.00	17.980	351.550	3876.62	353.71	661.27	257.31	40°27'59.065"N	104°45'58.422"W	6.33	
4043.00	13.470	345.380	3962.27	352.68	684.90	252.67	40°27'59.299"N	104°45'58.482"W	5.40	
4132.00	13.270	1.250	4048.89	353.35	705.15	250.27	40°27'59.499"N	104°45'58.513"W	4.12	
4222.00	12.840	16.650	4136.59	359.40	725.06	253.37	40°27'59.696"N	104°45'58.473"W	3.88	
4312.00	13.200	26.770	4224.29	369.63	743.82	260.86	40°27'59.881"N	104°45'58.376"W	2.56	
4401.00	11.670	28.160	4311.20	380.91	760.83	269.69	40°28'00.049"N	104°45'58.262"W	1.75	
4490.00	12.070	30.640	4398.29	392.19	776.77	278.68	40°28'00.207"N	104°45'58.145"W	0.73	
4580.00	11.980	29.190	4486.32	403.88	793.02	288.03	40°28'00.367"N	104°45'58.024"W	0.35	
4669.00	12.030	33.550	4573.37	415.77	808.82	297.66	40°28'00.523"N	104°45'57.900"W	1.02	
4759.00	11.840	36.780	4661.43	428.64	824.03	308.37	40°28'00.674"N	104°45'57.761"W	0.77	
4848.00	12.100	38.420	4748.49	441.98	838.65	319.63	40°28'00.818"N	104°45'57.616"W	0.48	
4938.00	12.320	29.210	4836.47	454.77	854.42	330.18	40°28'00.974"N	104°45'57.479"W	2.18	
5027.00	12.120	18.260	4923.46	464.83	871.59	337.75	40°28'01.144"N	104°45'57.381"W	2.61	
5116.00	11.890	19.120	5010.52	473.33	889.12	343.68	40°28'01.317"N	104°45'57.304"W	0.33	
5206.00	11.240	28.980	5098.70	483.00	905.56	350.96	40°28'01.479"N	104°45'57.210"W	2.31	



Actual Wellpath Report

TROUDT 8N-23B-M AWP

Page 4 of 9



REFERENCE WELLPATH IDENTIFICATION

Operator	SRC ENERGY	Slot	SLOT#10 TROUDT 8N-23B-M (760'FNL & 1730'FWL, SEC.27)
Area	COLORADO	Well	TROUDT 8N-23B-M
Field	WELD COUNTY (NAD83, TRUE NORTH)	Wellbore	TROUDT 8N-23B-M AWP
Facility	SEC.27-T06N-R66W		

WELLPATH DATA (169 stations)

MD [ft]	Inclination [°]	Azimuth [°]	TVD [ft]	Vert Sect [ft]	North [ft]	East [ft]	Latitude	Longitude	DLS [°/100ft]	Comments
5295.00	11.600	33.090	5185.94	494.25	920.64	360.05	40°28'01.628"N	104°45'57.093"W	1.00	
5385.00	11.620	30.700	5274.10	506.02	936.02	369.62	40°28'01.780"N	104°45'56.969"W	0.53	
5474.00	11.460	33.470	5361.30	517.63	951.10	379.07	40°28'01.929"N	104°45'56.846"W	0.65	
5564.00	11.630	32.520	5449.48	529.59	966.21	388.88	40°28'02.079"N	104°45'56.720"W	0.28	
5653.00	11.560	33.070	5536.66	541.43	981.24	398.57	40°28'02.227"N	104°45'56.594"W	0.15	
5743.00	11.290	37.230	5624.88	553.76	995.81	408.82	40°28'02.371"N	104°45'56.462"W	0.96	
5832.00	12.610	34.490	5711.95	566.65	1010.76	419.59	40°28'02.519"N	104°45'56.322"W	1.61	
5921.00	12.420	27.360	5798.84	578.92	1027.27	429.49	40°28'02.682"N	104°45'56.194"W	1.75	
6011.00	12.370	21.400	5886.74	589.43	1044.84	437.46	40°28'02.856"N	104°45'56.091"W	1.42	
6100.00	12.140	17.040	5973.72	598.26	1062.66	443.68	40°28'03.032"N	104°45'56.011"W	1.07	
6190.00	12.360	21.240	6061.67	607.16	1080.69	449.94	40°28'03.210"N	104°45'55.930"W	1.02	
6279.00	12.280	18.110	6148.62	616.17	1098.56	456.33	40°28'03.386"N	104°45'55.847"W	0.76	
6369.00	12.270	16.470	6236.56	624.53	1116.83	462.02	40°28'03.567"N	104°45'55.773"W	0.39	
6458.00	12.230	15.270	6323.54	632.36	1135.00	467.18	40°28'03.746"N	104°45'55.706"W	0.29	
6548.00	12.610	20.160	6411.43	640.96	1153.41	473.08	40°28'03.928"N	104°45'55.630"W	1.24	
6637.00	16.250	40.010	6497.66	655.00	1172.09	484.45	40°28'04.113"N	104°45'55.483"W	6.84	
6726.00	20.650	59.420	6582.15	678.94	1189.64	505.99	40°28'04.286"N	104°45'55.204"W	8.43	
6816.00	29.130	81.120	6663.88	715.71	1201.14	541.44	40°28'04.400"N	104°45'54.746"W	13.71	
6905.00	37.970	88.820	6738.01	764.64	1205.05	590.33	40°28'04.439"N	104°45'54.113"W	11.01	
6995.00	45.090	88.670	6805.35	823.78	1206.36	649.95	40°28'04.452"N	104°45'53.342"W	7.91	
7084.00	53.110	82.360	6863.60	890.77	1211.84	716.88	40°28'04.506"N	104°45'52.476"W	10.48	
7174.00	61.920	84.230	6911.90	966.56	1220.63	792.20	40°28'04.593"N	104°45'51.501"W	9.94	
7263.00	68.310	87.020	6949.33	1047.02	1226.74	872.66	40°28'04.653"N	104°45'50.460"W	7.72	
7352.00	75.880	86.830	6976.68	1131.25	1231.28	957.16	40°28'04.698"N	104°45'49.367"W	8.51	
7442.00	84.200	86.160	6992.23	1219.46	1236.70	1045.56	40°28'04.751"N	104°45'48.223"W	9.27	
7531.00	89.290	85.910	6997.28	1307.99	1242.84	1134.18	40°28'04.812"N	104°45'47.077"W	5.73	LANDING POINT (490'FSL & 2496'FEL, SEC.22)
7621.00	89.050	85.150	6998.59	1397.74	1249.86	1223.89	40°28'04.881"N	104°45'45.916"W	0.89	
7710.00	89.080	85.270	7000.04	1486.53	1257.29	1312.57	40°28'04.955"N	104°45'44.768"W	0.14	
7800.00	89.110	86.420	7001.46	1576.24	1263.81	1402.32	40°28'05.019"N	104°45'43.607"W	1.28	
7889.00	89.260	86.820	7002.72	1664.86	1269.06	1491.16	40°28'05.071"N	104°45'42.458"W	0.48	



Actual Wellpath Report

TROUDT 8N-23B-M AWP

Page 5 of 9



REFERENCE WELLPATH IDENTIFICATION

Operator	SRC ENERGY	Slot	SLOT#10 TROUDT 8N-23B-M (760'FNL & 1730'FWL, SEC.27)
Area	COLORADO	Well	TROUDT 8N-23B-M
Field	WELD COUNTY (NAD83, TRUE NORTH)	Wellbore	TROUDT 8N-23B-M AWB
Facility	SEC.27-T06N-R66W		

WELLPATH DATA (169 stations)

MD [ft]	Inclination [°]	Azimuth [°]	TVD [ft]	Vert Sect [ft]	North [ft]	East [ft]	Latitude	Longitude	DLS [°/100ft]	Comments
7979.00	89.010	89.280	7004.08	1754.23	1272.12	1581.09	40°28'05.101"N	104°45'41.294"W	2.75	
8069.00	88.860	89.890	7005.76	1843.29	1272.77	1671.07	40°28'05.107"N	104°45'40.130"W	0.70	
8158.00	89.480	88.830	7007.05	1931.41	1273.76	1760.05	40°28'05.117"N	104°45'38.979"W	1.38	
8247.00	89.380	87.540	7007.93	2019.77	1276.58	1849.00	40°28'05.145"N	104°45'37.828"W	1.45	
8337.00	89.420	86.290	7008.87	2109.34	1281.43	1938.86	40°28'05.193"N	104°45'36.665"W	1.39	
8426.00	89.290	87.270	7009.88	2197.94	1286.42	2027.72	40°28'05.242"N	104°45'35.516"W	1.11	
8516.00	89.230	86.130	7011.04	2287.54	1291.60	2117.56	40°28'05.293"N	104°45'34.353"W	1.27	
8605.00	89.170	86.570	7012.28	2376.19	1297.27	2206.37	40°28'05.349"N	104°45'33.204"W	0.50	
8695.00	89.140	86.660	7013.61	2465.81	1302.58	2296.20	40°28'05.401"N	104°45'32.042"W	0.11	
8785.00	89.230	87.160	7014.89	2555.37	1307.43	2386.06	40°28'05.449"N	104°45'30.879"W	0.56	
8874.00	89.200	88.530	7016.11	2643.79	1310.78	2474.99	40°28'05.482"N	104°45'29.729"W	1.54	
8964.00	88.980	89.100	7017.54	2733.02	1312.64	2564.96	40°28'05.501"N	104°45'28.564"W	0.68	
9053.00	89.230	89.970	7018.93	2821.11	1313.36	2653.94	40°28'05.508"N	104°45'27.413"W	1.02	
9143.00	89.350	90.640	7020.04	2910.01	1312.88	2743.93	40°28'05.503"N	104°45'26.249"W	0.76	
9232.00	89.170	91.070	7021.19	2997.78	1311.56	2832.92	40°28'05.490"N	104°45'25.097"W	0.52	
9321.00	89.970	91.660	7021.86	3085.42	1309.44	2921.89	40°28'05.469"N	104°45'23.946"W	1.12	
9411.00	90.620	91.810	7021.40	3173.95	1306.71	3011.85	40°28'05.441"N	104°45'22.782"W	0.74	
9500.00	90.490	92.430	7020.53	3261.38	1303.42	3100.78	40°28'05.409"N	104°45'21.632"W	0.71	
9590.00	90.550	91.480	7019.72	3349.84	1300.35	3190.72	40°28'05.378"N	104°45'20.468"W	1.06	
9679.00	90.400	90.150	7018.98	3437.63	1299.08	3279.71	40°28'05.366"N	104°45'19.317"W	1.50	
9769.00	90.250	89.960	7018.47	3526.59	1299.00	3369.71	40°28'05.365"N	104°45'18.152"W	0.27	
9858.00	90.620	89.480	7017.79	3614.64	1299.43	3458.70	40°28'05.369"N	104°45'17.001"W	0.68	
9947.00	90.550	89.060	7016.88	3702.79	1300.57	3547.69	40°28'05.380"N	104°45'15.849"W	0.48	
10037.00	90.430	89.110	7016.12	3791.97	1302.00	3637.68	40°28'05.394"N	104°45'14.685"W	0.14	
10126.00	90.180	89.550	7015.64	3880.11	1303.04	3726.67	40°28'05.404"N	104°45'13.534"W	0.57	
10215.00	90.180	90.130	7015.36	3968.14	1303.29	3815.67	40°28'05.407"N	104°45'12.382"W	0.65	
10305.00	90.310	91.100	7014.98	4056.96	1302.33	3905.66	40°28'05.397"N	104°45'11.218"W	1.09	
10395.00	90.090	91.930	7014.66	4145.55	1299.95	3995.63	40°28'05.373"N	104°45'10.054"W	0.95	
10484.00	90.400	92.090	7014.28	4233.02	1296.83	4084.57	40°28'05.342"N	104°45'08.903"W	0.39	
10574.00	90.400	91.450	7013.65	4321.54	1294.05	4174.53	40°28'05.315"N	104°45'07.739"W	0.71	



Actual Wellpath Report

TROUDT 8N-23B-M AWP

Page 6 of 9



REFERENCE WELLPATH IDENTIFICATION

Operator	SRC ENERGY	Slot	SLOT#10 TROUDT 8N-23B-M (760'FNL & 1730'FWL, SEC.27)
Area	COLORADO	Well	TROUDT 8N-23B-M
Field	WELD COUNTY (NAD83, TRUE NORTH)	Wellbore	TROUDT 8N-23B-M AWB
Facility	SEC.27-T06N-R66W		

WELLPATH DATA (169 stations)

MD [ft]	Inclination [°]	Azimuth [°]	TVD [ft]	Vert Sect [ft]	North [ft]	East [ft]	Latitude	Longitude	DLS [°/100ft]	Comments
10663.00	90.280	91.030	7013.13	4409.22	1292.12	4263.50	40°28'05.295"N	104°45'06.588"W	0.49	
10752.00	90.710	90.310	7012.36	4497.04	1291.08	4352.49	40°28'05.285"N	104°45'05.437"W	0.94	
10842.00	90.280	89.260	7011.58	4586.06	1291.42	4442.49	40°28'05.288"N	104°45'04.272"W	1.26	
10931.00	90.520	88.670	7010.96	4674.28	1293.02	4531.47	40°28'05.304"N	104°45'03.121"W	0.72	
11020.00	90.150	88.570	7010.44	4762.56	1295.17	4620.44	40°28'05.325"N	104°45'01.970"W	0.43	
11110.00	90.250	89.640	7010.12	4851.74	1296.57	4710.43	40°28'05.339"N	104°45'00.805"W	1.19	
11199.00	90.310	92.220	7009.69	4939.49	1295.13	4799.41	40°28'05.324"N	104°44'59.654"W	2.90	
11289.00	90.280	94.200	7009.22	5027.57	1290.09	4889.26	40°28'05.274"N	104°44'58.492"W	2.20	
11378.00	90.180	95.460	7008.87	5114.12	1282.60	4977.94	40°28'05.200"N	104°44'57.344"W	1.42	
11468.00	90.250	91.310	7008.53	5202.13	1277.28	5067.77	40°28'05.147"N	104°44'56.182"W	4.61	
11557.00	90.150	90.900	7008.22	5289.84	1275.57	5156.75	40°28'05.130"N	104°44'55.031"W	0.47	
11647.00	90.650	90.040	7007.59	5378.70	1274.83	5246.74	40°28'05.123"N	104°44'53.866"W	1.11	
11736.00	90.460	92.010	7006.73	5466.43	1273.24	5335.72	40°28'05.107"N	104°44'52.715"W	2.22	
11825.00	90.580	91.330	7005.92	5553.99	1270.64	5424.68	40°28'05.081"N	104°44'51.564"W	0.78	
11915.00	90.650	90.380	7004.95	5642.75	1269.30	5514.66	40°28'05.068"N	104°44'50.400"W	1.06	
12004.00	90.740	92.630	7003.88	5730.35	1266.96	5603.62	40°28'05.044"N	104°44'49.249"W	2.53	
12094.00	90.220	91.320	7003.12	5818.80	1263.86	5693.56	40°28'05.013"N	104°44'48.085"W	1.57	
12183.00	90.340	90.870	7002.69	5906.52	1262.16	5782.54	40°28'04.996"N	104°44'46.934"W	0.52	
12272.00	90.340	89.670	7002.16	5994.44	1261.74	5871.54	40°28'04.992"N	104°44'45.783"W	1.35	
12362.00	90.430	88.630	7001.55	6083.61	1263.08	5961.53	40°28'05.005"N	104°44'44.618"W	1.16	
12451.00	90.370	87.570	7000.93	6171.99	1266.03	6050.47	40°28'05.034"N	104°44'43.468"W	1.19	
12541.00	90.550	85.830	7000.21	6261.60	1271.21	6140.32	40°28'05.085"N	104°44'42.305"W	1.94	
12630.00	90.400	84.060	6999.47	6350.42	1279.05	6228.96	40°28'05.162"N	104°44'41.158"W	2.00	
12720.00	90.310	86.010	6998.91	6440.22	1286.84	6318.62	40°28'05.239"N	104°44'39.998"W	2.17	
12809.00	90.550	88.980	6998.25	6528.70	1290.73	6407.52	40°28'05.277"N	104°44'38.848"W	3.35	
12899.00	90.180	89.380	6997.67	6617.86	1292.01	6497.51	40°28'05.290"N	104°44'37.683"W	0.61	
12989.00	90.460	88.710	6997.17	6707.05	1293.51	6587.50	40°28'05.304"N	104°44'36.519"W	0.81	
13079.00	90.370	88.850	6996.52	6796.30	1295.43	6677.47	40°28'05.323"N	104°44'35.355"W	0.18	
13168.00	90.400	89.180	6995.92	6884.50	1296.96	6766.46	40°28'05.338"N	104°44'34.204"W	0.37	
13258.00	90.520	90.260	6995.20	6973.54	1297.40	6856.45	40°28'05.342"N	104°44'33.039"W	1.21	



Actual Wellpath Report

TROUDT 8N-23B-M AWP

Page 7 of 9



REFERENCE WELLPATH IDENTIFICATION

Operator	SRC ENERGY	Slot	SLOT#10 TROUDT 8N-23B-M (760'FNL & 1730'FWL, SEC.27)
Area	COLORADO	Well	TROUDT 8N-23B-M
Field	WELD COUNTY (NAD83,TRUE NORTH)	Wellbore	TROUDT 8N-23B-M AWB
Facility	SEC.27-T06N-R66W		

WELLPATH DATA (169 stations)

MD [ft]	Inclination [°]	Azimuth [°]	TVD [ft]	Vert Sect [ft]	North [ft]	East [ft]	Latitude	Longitude	DLS [°/100ft]	Comments
13348.00	90.770	94.080	6994.18	7061.92	1293.99	6946.37	40°28'05.308"N	104°44'31.876"W	4.25	
13437.00	90.580	96.260	6993.14	7148.34	1285.98	7034.99	40°28'05.228"N	104°44'30.729"W	2.46	
13526.00	90.740	92.240	6992.11	7235.07	1279.38	7123.72	40°28'05.163"N	104°44'29.581"W	4.52	
13616.00	90.740	90.220	6990.95	7323.73	1277.45	7213.69	40°28'05.144"N	104°44'28.417"W	2.24	
13705.00	90.620	90.600	6989.89	7411.62	1276.81	7302.68	40°28'05.137"N	104°44'27.266"W	0.45	
13795.00	91.260	89.960	6988.41	7500.52	1276.37	7392.67	40°28'05.133"N	104°44'26.102"W	1.01	
13884.00	91.260	88.260	6986.46	7588.68	1277.75	7481.63	40°28'05.146"N	104°44'24.951"W	1.91	
13974.00	91.420	85.690	6984.35	7678.21	1282.50	7571.48	40°28'05.193"N	104°44'23.788"W	2.86	
14064.00	91.630	85.470	6981.96	7767.94	1289.44	7661.18	40°28'05.261"N	104°44'22.627"W	0.34	
14153.00	90.710	85.780	6980.14	7856.67	1296.22	7749.90	40°28'05.328"N	104°44'21.480"W	1.09	
14242.00	90.520	87.090	6979.18	7945.32	1301.76	7838.72	40°28'05.382"N	104°44'20.330"W	1.49	
14332.00	90.310	88.730	6978.53	8034.72	1305.04	7928.65	40°28'05.414"N	104°44'19.167"W	1.84	
14421.00	90.340	88.770	6978.03	8122.98	1306.98	8017.63	40°28'05.433"N	104°44'18.015"W	0.06	
14511.00	90.180	90.240	6977.62	8212.07	1307.76	8107.62	40°28'05.440"N	104°44'16.851"W	1.64	
14600.00	90.280	91.470	6977.26	8299.85	1306.43	8196.61	40°28'05.427"N	104°44'15.700"W	1.39	
14690.00	90.520	93.370	6976.63	8388.17	1302.63	8286.52	40°28'05.389"N	104°44'14.536"W	2.13	
14779.00	90.770	92.950	6975.63	8475.29	1297.72	8375.38	40°28'05.340"N	104°44'13.387"W	0.55	
14868.00	90.920	91.310	6974.32	8562.71	1294.42	8464.31	40°28'05.307"N	104°44'12.236"W	1.85	LAST BHI SURVEY (567'FSL & 496'FEL, SEC.23)
14900.00	90.920	91.310	6973.81	8594.22	1293.69	8496.30	40°28'05.300"N	104°44'11.822"W	0.00	PROJ TO BIT (566'FSL & 464'FEL, SEC.23)

HOLE & CASING SECTIONS - Ref Wellbore: TROUDT 8N-23B-M AWB Ref Wellpath: TROUDT 8N-23B-M AWP

String/Diameter	Start MD [ft]	End MD [ft]	Interval [ft]	Start TVD [ft]	End TVD [ft]	Start N/S [ft]	Start E/W [ft]	End N/S [ft]	End E/W [ft]
9.625in Casing Surface	25.00	1760.00	1735.00	25.00	1735.75	0.00	0.00	230.21	90.42



Actual Wellpath Report

TROUDT 8N-23B-M AWP

Page 8 of 9



REFERENCE WELLPATH IDENTIFICATION

Operator	SRC ENERGY	Slot	SLOT#10 TROUDT 8N-23B-M (760'FNL & 1730'FWL, SEC.27)
Area	COLORADO	Well	TROUDT 8N-23B-M
Field	WELD COUNTY (NAD83, TRUE NORTH)	Wellbore	TROUDT 8N-23B-M AWB
Facility	SEC.27-T06N-R66W		

TARGETS

Name	TVD [ft]	North [ft]	East [ft]	Grid East [US ft]	Grid North [US ft]	Latitude	Longitude	Shape
SEC.23-T06N-R66W	-8.00	4231.32	-2002.25	3201871.60	1417148.27	40°28'34.342"N	104°46'27.660"W	polygon
SEC.22-T06N-R66W	6.00	1412.77	-8144.08	3195753.51	1414279.17	40°28'06.478"N	104°47'47.123"W	polygon
SEC.27-T06N-R66W	19.00	-4766.34	940.45	3204888.45	1408175.58	40°27'05.432"N	104°45'49.586"W	polygon
SEC.28-T06N-R66W	19.00	-4766.34	940.45	3204888.45	1408175.58	40°27'05.432"N	104°45'49.586"W	polygon
SEC.26-T06N-R66W	38.00	-4763.02	540.23	3204488.23	1408175.60	40°27'05.465"N	104°45'54.763"W	polygon
SEC.29-T06N-R66W EAST HALF	50.00	0.02	-134.94	3203773.74	1412932.71	40°27'52.531"N	104°46'03.497"W	polygon
TROUDT 8N-23B-M BHL ON PLAT (556'FSL & 510'FEL, SEC.23)	6943.00	1283.86	8450.48	3212347.93	1414287.41	40°28'05.203"N	104°44'12.415"W	circle
TROUDT 8N-23B-M TOP OF PROD ON PLAT (548'FSL & 2527'FEL, SEC.22)	6984.00	1301.02	1102.96	3205000.80	1414243.84	40°28'05.387"N	104°45'47.480"W	circle

WELLPATH COMPOSITION - Ref Wellbore: TROUDT 8N-23B-M AWB Ref Wellpath: TROUDT 8N-23B-M AWP

Start MD [ft]	End MD [ft]	Positional Uncertainty Model	Log Name/Comment	Wellbore
25.00	1760.00	BHI NaviTrak (Standard)	13 1/2" SURFACE SURVEYS <88-1739>	TROUDT 8N-23B-M AWB
1760.00	14868.00	BHI AutoTrak Curve (MagCAD+IFR1, Short spacing)	8 1/2" BHI ATC surveys <1897-14868>	TROUDT 8N-23B-M AWB
14868.00	14900.00	Blind Drilling (std)	Projection to bit	TROUDT 8N-23B-M AWB



Actual Wellpath Report

TROUDT 8N-23B-M AWP

Page 9 of 9



REFERENCE WELLPATH IDENTIFICATION

Operator	SRC ENERGY	Slot	SLOT#10 TROUDT 8N-23B-M (760'FNL & 1730'FWL, SEC.27)
Area	COLORADO	Well	TROUDT 8N-23B-M
Field	WELD COUNTY (NAD83,TRUE NORTH)	Wellbore	TROUDT 8N-23B-M AWB
Facility	SEC.27-T06N-R66W		

WELLPATH COMMENTS

MD [ft]	Inclination [°]	Azimuth [°]	TVD [ft]	Comment
7531.00	89.290	85.910	6997.28	LANDING POINT (490'FSL & 2496'FEL, SEC.22)
14868.00	90.920	91.310	6974.32	LAST BHI SURVEY (567'FSL & 496'FEL, SEC.23)
14900.00	90.920	91.310	6973.81	PROJ TO BIT (566'FSL & 464'FEL, SEC.23)